

#01_WLAN 5GHz_802.11a 6Mbps_Left Side_20mm_Ch44;Ant Main

Communication System: 802.11a ; Frequency: 5220 MHz;Duty Cycle: 1:1.015

Medium: MSL_5G_160216 Medium parameters used: $f = 5220$ MHz; $\sigma = 5.504$ S/m; $\epsilon_r = 46.952$; $\rho = 1000$ kg/m³

Ambient Temperature : 23.2 °C ; Liquid Temperature : 22.2 °C

DASY5 Configuration:

- Probe: EX3DV4 - SN3955; ConvF(4.42, 4.42, 4.42); Calibrated: 2015/11/24;
- Sensor-Surface: 1.4mm (Mechanical Surface Detection)
- Electronics: DAE4 Sn1399; Calibrated: 2015/11/23
- Phantom: SAM_Left; Type: QD000P40CD; Serial: TP:1644
- Measurement SW: DASY52, Version 52.8 (8);SEMCAD X Version 14.6.10 (7331)

Configuration/Ch44/Area Scan (71x241x1): Interpolated grid: dx=1.000 mm, dy=1.000 mm
 Maximum value of SAR (interpolated) = 1.22 W/kg

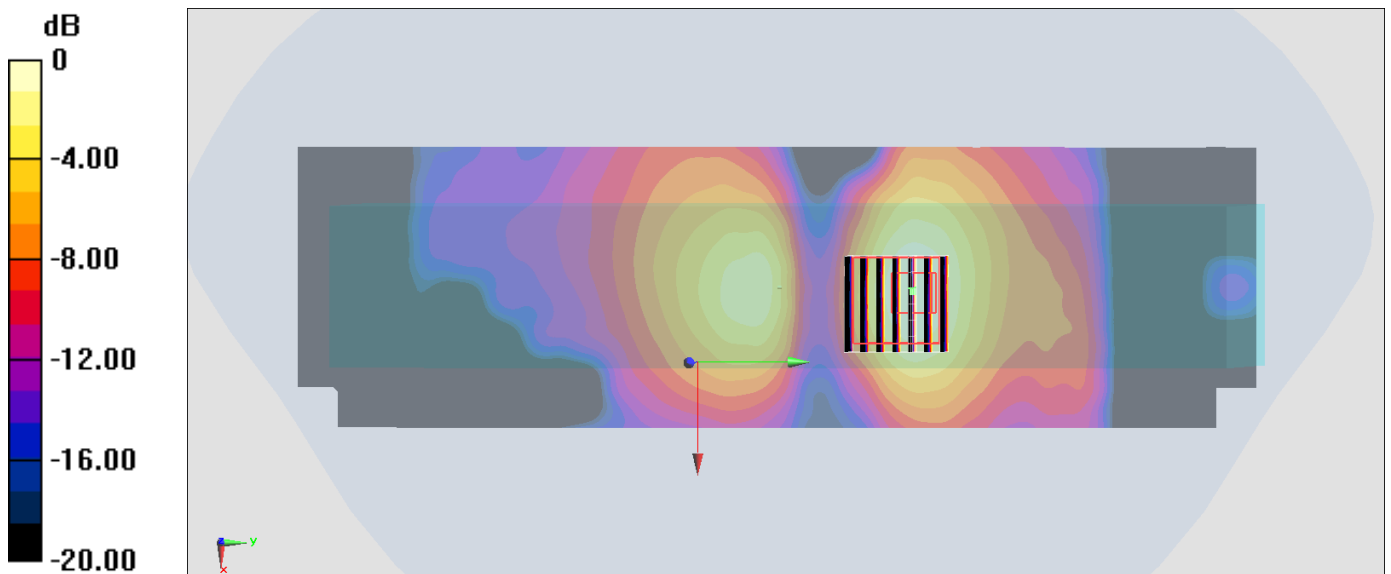
Configuration/Ch44/Zoom Scan (7x7x7)/Cube 0: Measurement grid: dx=4mm, dy=4mm, dz=1.4mm

Reference Value = 14.44 V/m; Power Drift = -0.13 dB

Peak SAR (extrapolated) = 1.85 W/kg

SAR(1 g) = 0.532 W/kg; SAR(10 g) = 0.201 W/kg

Maximum value of SAR (measured) = 1.16 W/kg



0 dB = 1.16 W/kg = 0.64 dBW/kg