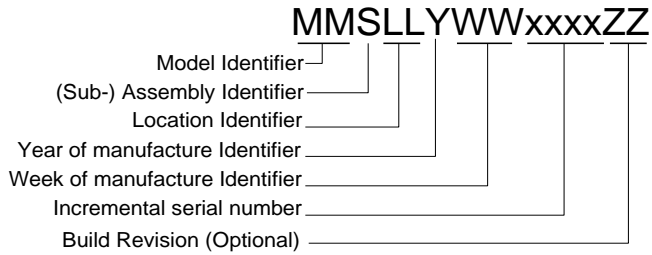


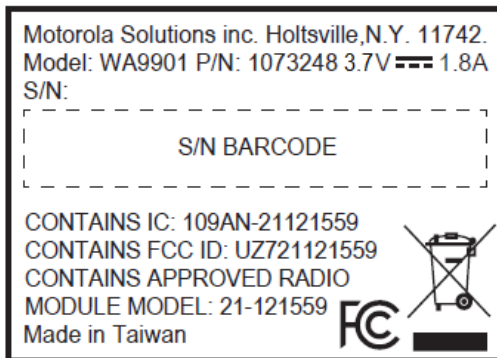


**WA9901 - RFID MODULE UHF LINEAR (NA) ENDCAP
WA9903 – RFID MODULE UHF LINEAR (NA) POD
INSTALLATION INSTRUCTION**

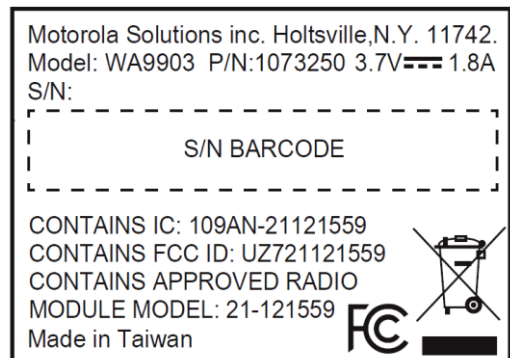
1. Serial number codification



2. MFG Label for RFID Module UHF LINEAR (NA) ENDCAP



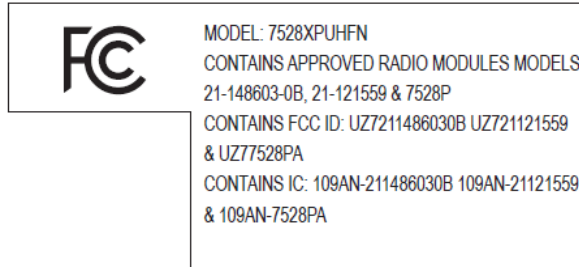
Label MFG WAP4 UHF for WA9901



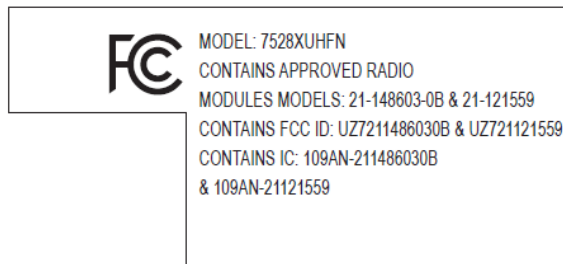
Label MFG WAP4 UHF for WA9903

3. Regulatory Label for 7528 terminal

a. WWAN variant:

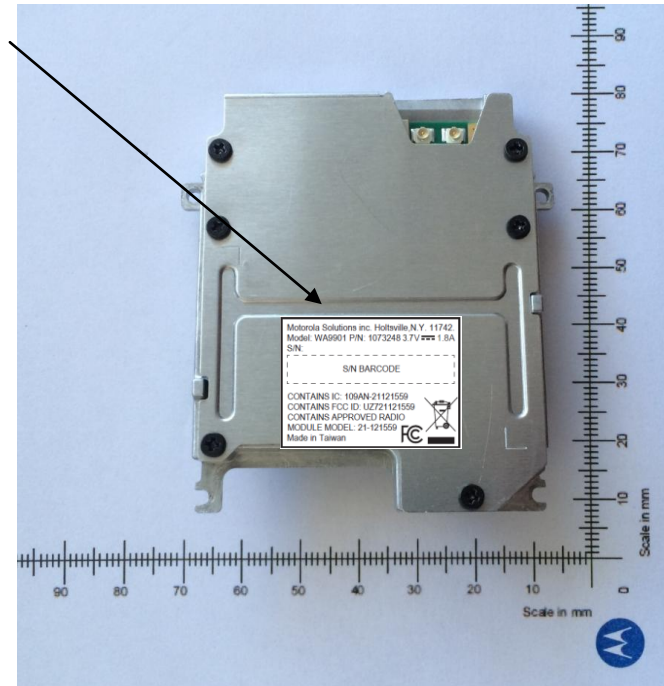


b. WIFI only variant:



4. Installation procedure

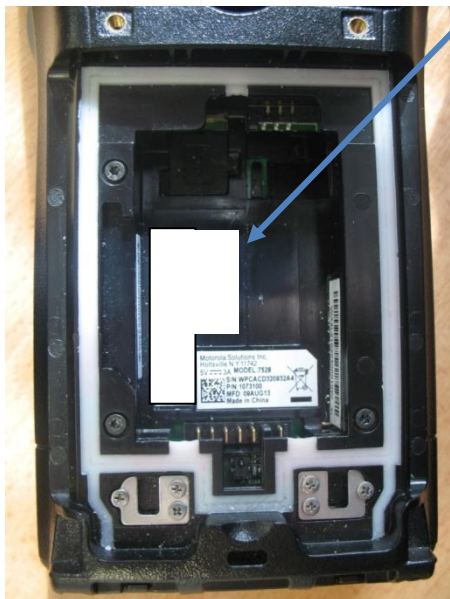
1. Label area for MFG label



2. Label area for Regulatory label into 7528 terminal:

Stick regulatory label in the location following depends on WorkAbout Pro4 variant:

Label is located under battery.



WorkAbout Pro4 Long Alphanumeric Keyboard



WorkAbout Pro4 Short Numeric Keyboard