

System Check_Head_6500MHz

DUT: D6.5GHzV2-1003

Communication System: ; Frequency: 6500.0 ; Duty Cycle: 1:1

Medium: HSL_6G_220821. Medium parameters used: $f = 6500.0$ MHz; $\sigma = 6.18$ S/m; $\epsilon_r = 35.3$

Ambient Temperature: 23.5°C; Liquid Temperature: 22.5°C

DASY6 Configuration:

- Probe: EX3DV4 - SN3925; ConvF(5.4, 5.4, 5.4); Calibrated: 2022-04-29
- Sensor-Surface: 1.4 mm
- Electronics: DAE4 Sn778; Calibrated: 2022-05-30
- Phantom: ELI V5.0 (20deg probe tilt); Serial: 1131; Section: Flat
- Measurement Software: cDASY6 V6.6.0.13926
- UID: , 0--
- MAIA: Area Scan: N/A; Zoom Scan: N/A

Area Scan (51.0 mm x 85.0 mm): Measurement Grid: 8.5 mm x 8.5 mm

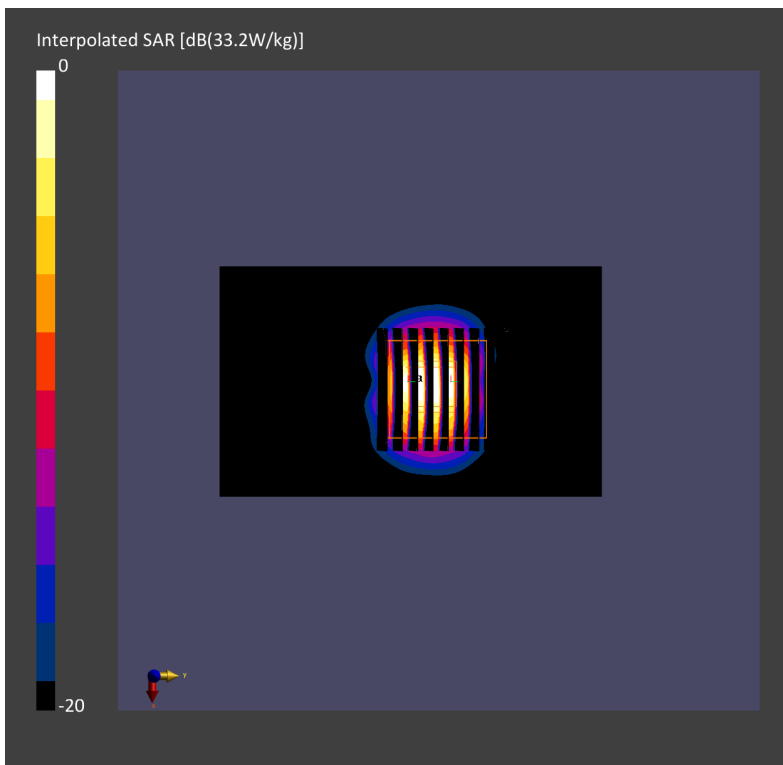
SAR (1g) = 22.9 W/kg; SAR (10g) = 4.93 W/kg;

Zoom Scan (22.0 mm x 22.0 mm x 22.0 mm): Measurement Grid: 3.4 mm x 3.4 mm x 1.4 mm

Power Drift = 0.00 dB

SAR (1g) = 30.1 W/kg; SAR (8g) = 6.65 W/kg; SAR (10g) = 5.45 W/kg;

psAPD (1.0cm², sq) = 301 [W/m²]; psAPD (4.0cm², sq) = 133



Measurement Report for Device

Device Under Test Properties

Model, Manufacturer	Dimensions [mm]	IMEI	DUT Type
Device,	70.0 x 50.0 x 8.0		Phone

Exposure Conditions

Phantom Section	Position, Test Distance [mm]	Frequency [MHz]	Conversion Factor
5G	FRONT, 10.00	10000.0	1.0

Hardware Setup

Phantom	Medium	Probe, Calibration Date	DAE, Calibration Date
mmWave - xxxx	Air -	EUmmWV4 - SN9441_F1-55GHz, 2021-11-24	DAE4 Sn778, 2022-05-30

Scans Setup

Scan Type	5G Scan
Grid Extents [mm]	120.0 x 120.0
Grid Steps [lambda]	0.25 x 0.25
Sensor Surface [mm]	10.0

Measurement Results

Date	2022-08-21, 06:05
Avg. Area [cm ²]	4.00
psPDn+ [W/m ²]	55.5
psPDtot+ [W/m ²]	55.7
H _{max} [A/m]	0.407
E _{max} [V/m]	157
max _(Stot) [W/m ²]	62.7
Power Drift [dB]	0.07

