

#01_WLAN6GHz_802.11ax-HE160 MCS0_Bottom Face_0mm_Ch15;Ant 2

Communication System: U-NII-5; Frequency: 6025.0 ; Duty Cycle: 1:1.018

Medium: HSL_6G_220821 Medium parameters used: $f=6025.0$ MHz; $\sigma=5.58$ S/m; $\epsilon_r=36.2$

Ambient Temperature: 23.5°C; Liquid Temperature: 22.5°C

DASY6 Configuration:

- Probe: EX3DV4 - SN3925; ConvF(5.4, 5.4, 5.4); Calibrated: 2022-04-29
- Sensor-Surface: 1.4 mm
- Electronics: DAE4 Sn778; Calibrated: 2022-05-30
- Phantom: ELI V5.0 (20deg probe tilt); Serial: 1131; Section: Flat
- Measurement Software: cDASY6 V6.6.0.13926
- UID: WLAN, 10755-AAC
- MAIA: Area Scan: N/A; Zoom Scan: N/A

Area Scan (119.0 mm x 102.0 mm): Measurement Grid: 8.5 mm x 8.5 mm

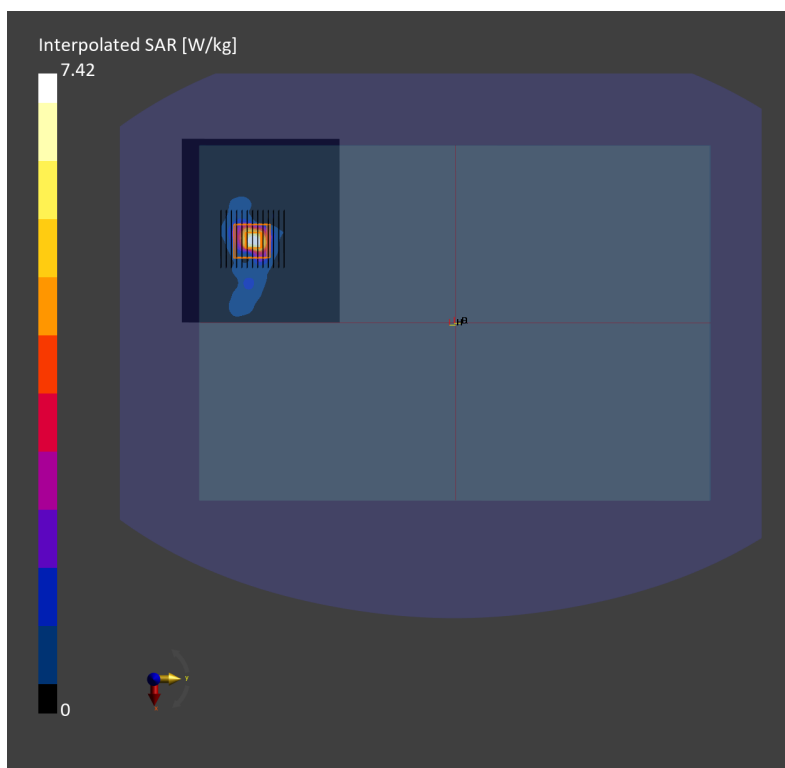
SAR (1g) = 0.179 W/kg; SAR (10g) = 0.051 W/kg;

Zoom Scan (22.0 mm x 22.0 mm x 22.0 mm): Measurement Grid: 3.4 mm x 3.4 mm x 1.4 mm

Power Drift = -0.04 dB

SAR (1g) = 0.226 W/kg; SAR (8g) = 0.072 W/kg; SAR (10g) = 0.062 W/kg;

psAPD (1.0cm², sq) = 2.26 [W/m²]; psAPD (4.0cm², sq) = 1.64 [W/m²]



Measurement Report for Device

Device Under Test Properties

Model, Manufacturer	Dimensions [mm]	IMEI	DUT Type
Device,	307.0 x 220.0 x 18.0		Tablet

Exposure Conditions

Phantom Section	Position, Test Distance [mm]	Frequency [MHz]	Conversion Factor
5G	Bottom Face, 2.00	6985.0	1.0

Hardware Setup

Phantom	Medium	Probe, Calibration Date	DAE, Calibration Date
mmWave - xxxx	Air -	EUmmWV4 - SN9441_F1-55GHz, 2021-11-24	DAE4 Sn778, 2022-05-30

Scans Setup

Scan Type	5G Scan
Grid Extents [mm]	120.0 x 120.0
Grid Steps [lambda]	0.0625 x 0.0625
Sensor Surface [mm]	2.0

Measurement Results

Date	2022-08-22, 11:02
Avg. Area [cm ²]	4.00
psPDn+ [W/m ²]	1.51
psPDtot+ [W/m ²]	1.68
H _{max} [A/m]	0.103
E _{max} [V/m]	38.5
max(Stot) [W/m ²]	2.87
IPDn	1.42
Power Drift [dB]	0.01

