

Figure 1 (Inside View #1)

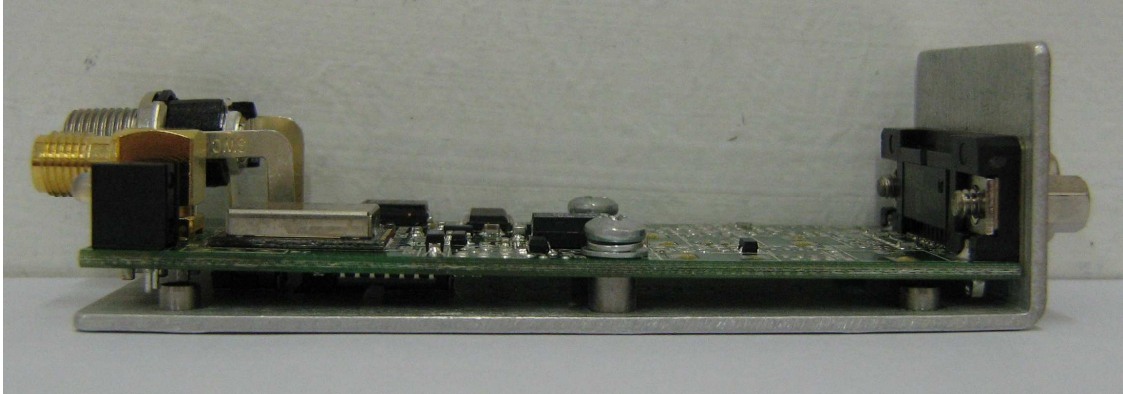


Figure 2 (Inside View #2)

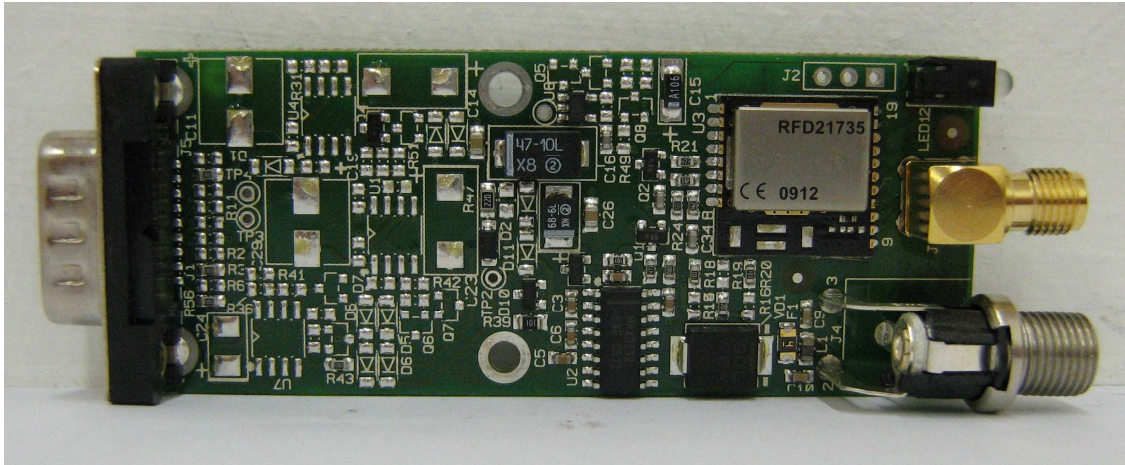


Figure 3 (Top View of the PCB - View #1)

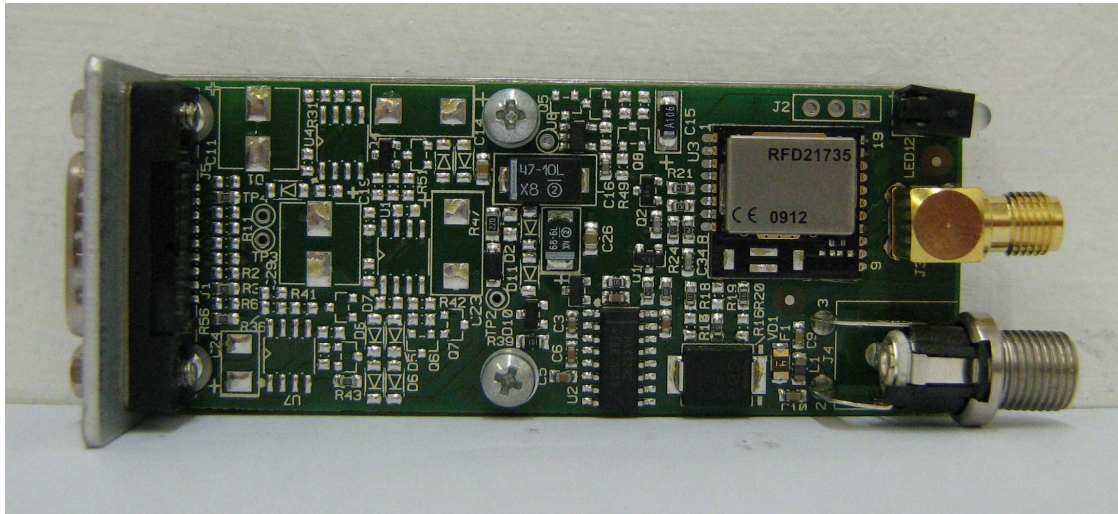


Figure 4 (Top View of the PCB - View #2)

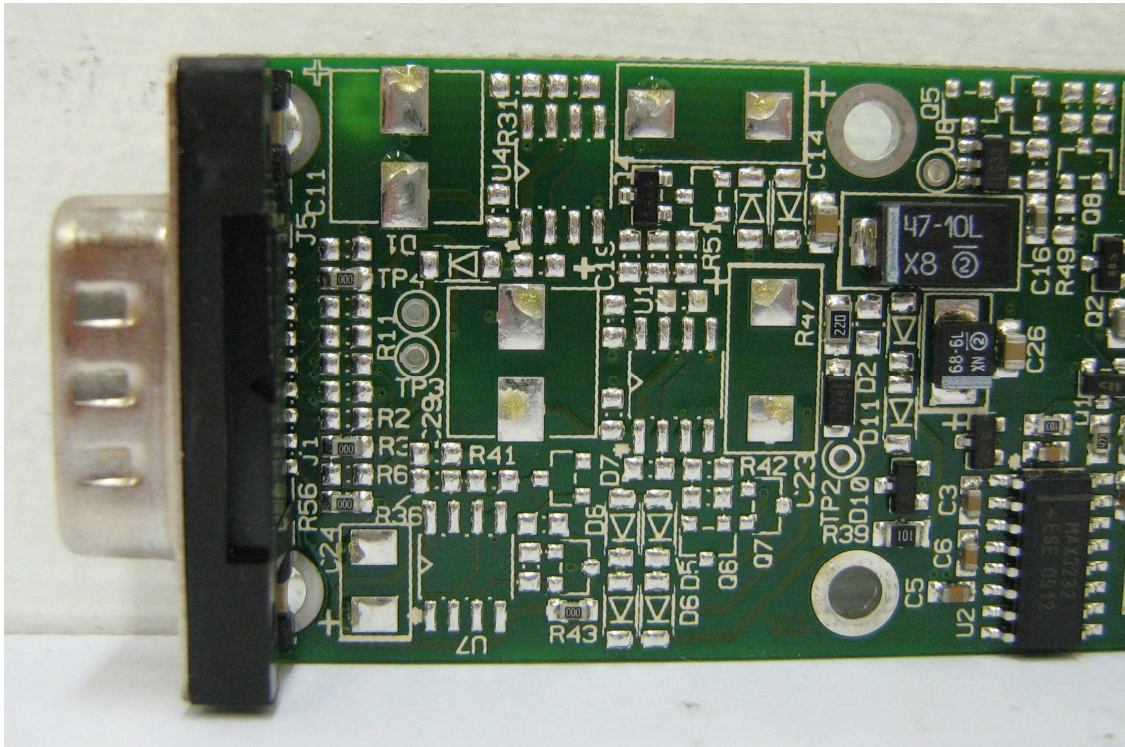


Figure 5 (Top View of the PCB - Close-up #1)

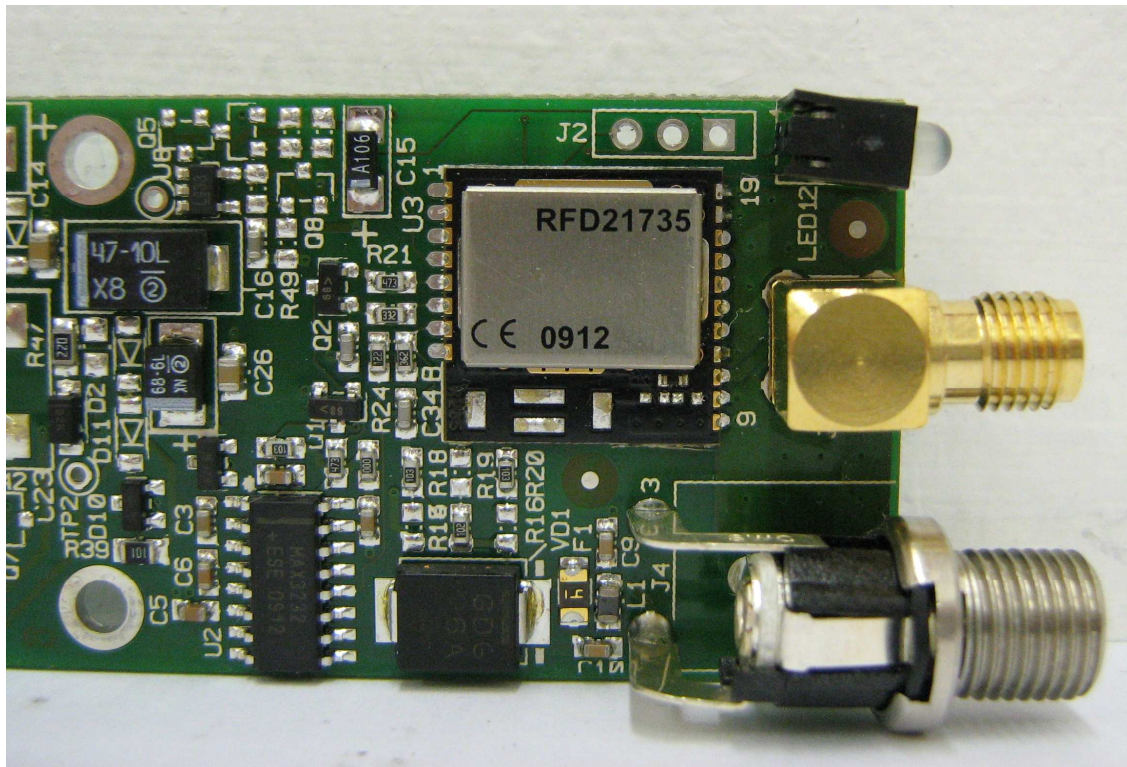


Figure 6 (Top View of the PCB - Close-up #2)

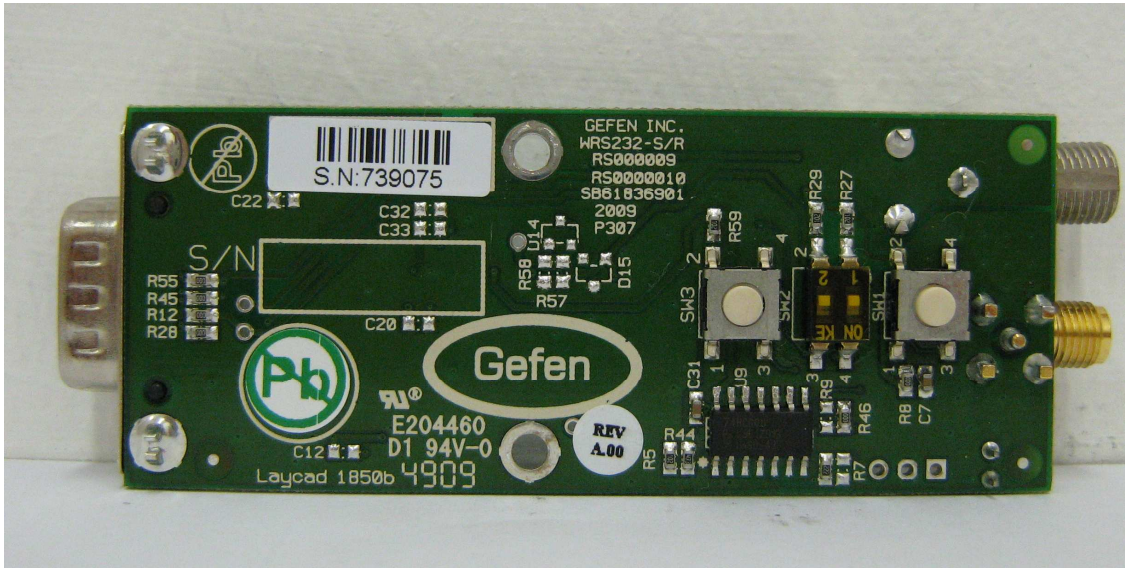


Figure 7 (PCB Bottom View)

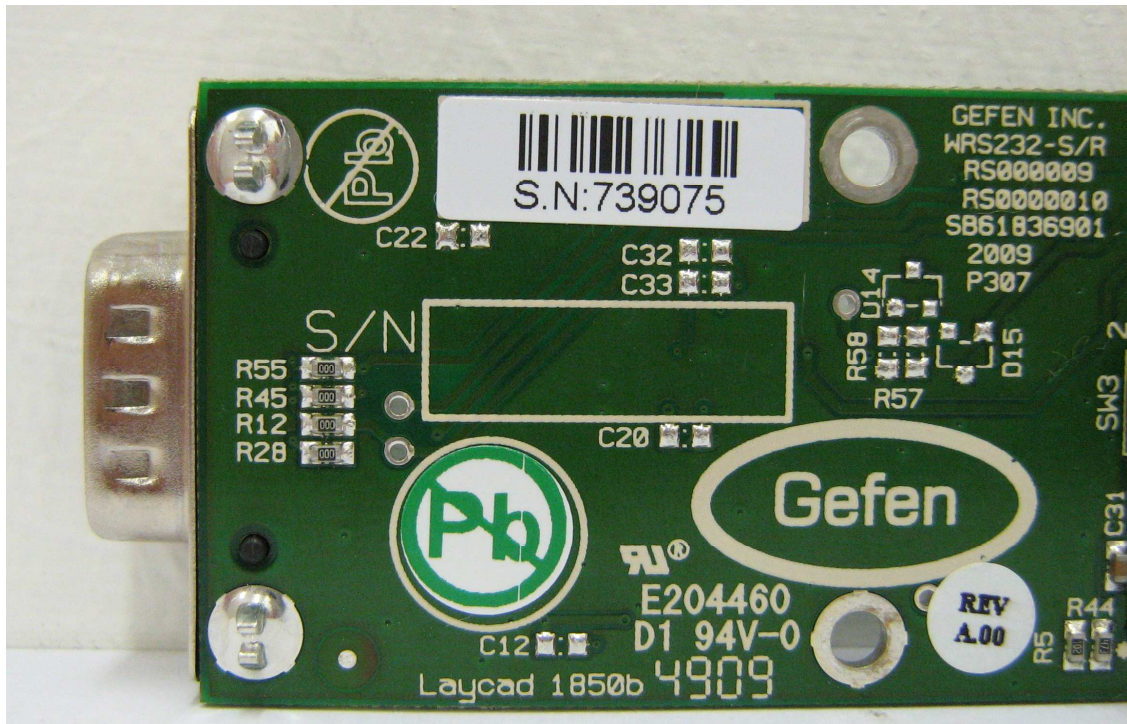


Figure 8 (PCB Bottom View - Close-up #1)

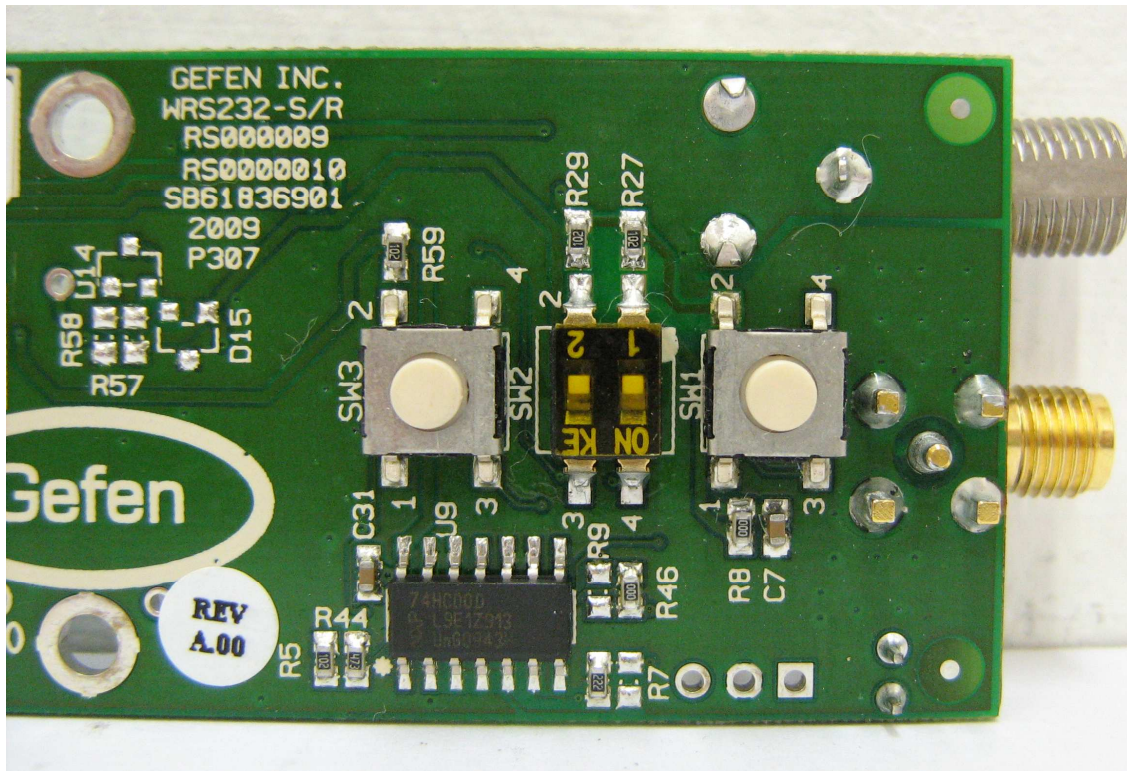


Figure 9 (PCB Bottom View - Close-up #2)

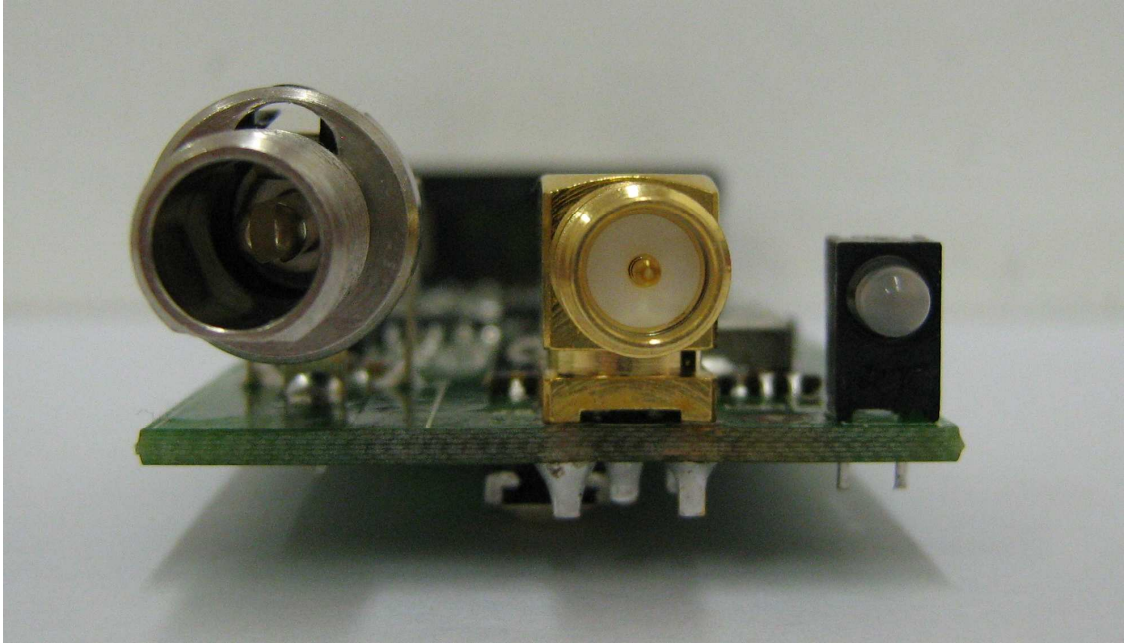


Figure 10 (Photo of the Connectors)