

Internal Photos

PCBs



Figure 1: Main Board, Back

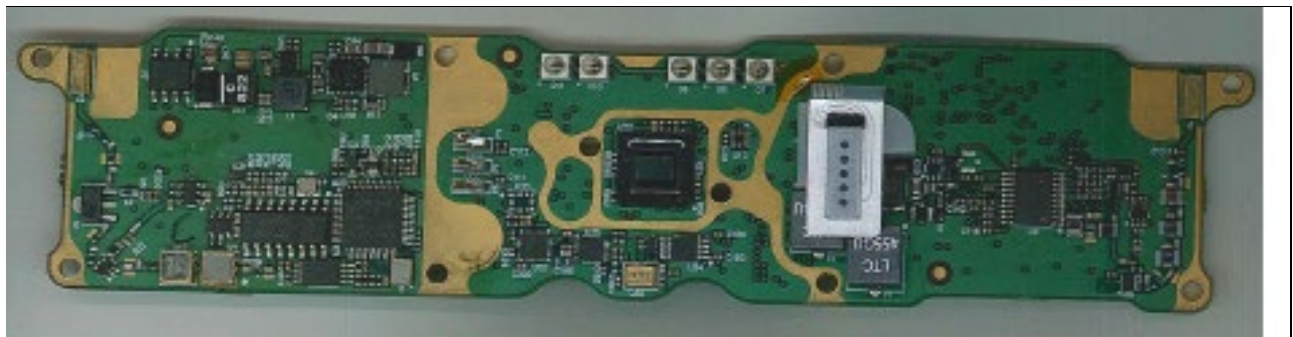


Figure 2: Main Board, Front

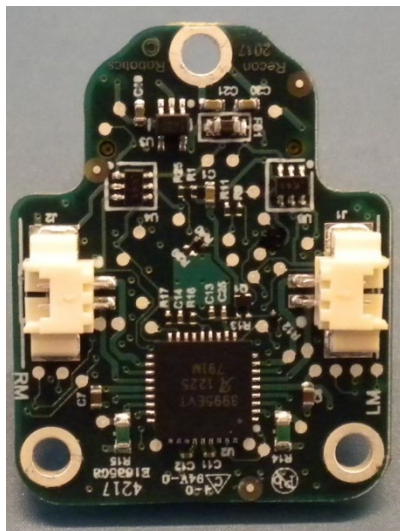


Figure 3: Interface Board, Back

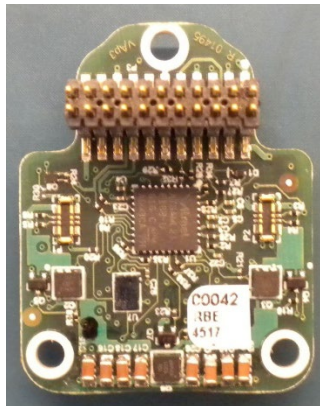


Figure 4: Interface Board, Front



Figure 5: Hall Sensor Board, Back



Figure 6: Hall Sensor Board, Front

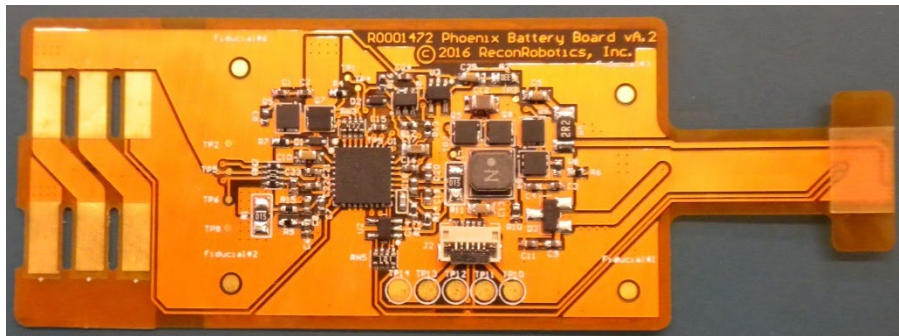


Figure 7: Battery Board, Front

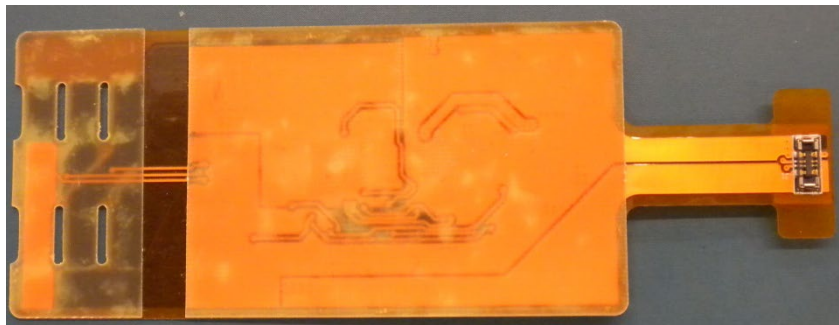


Figure 8: Battery Board, Back

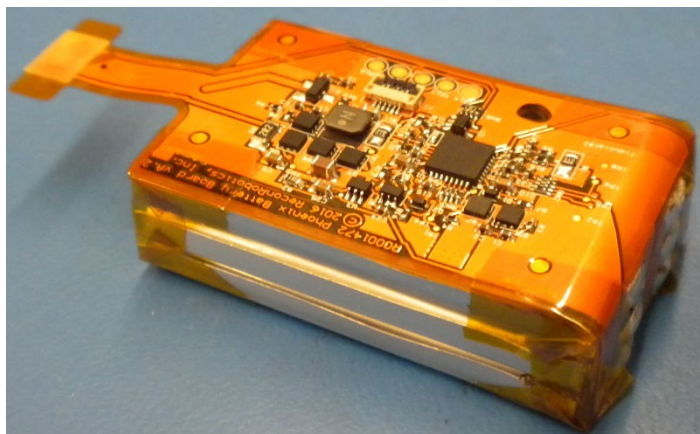


Figure 9: Battery Board installed in Battery Assembly (heat shrink removed)

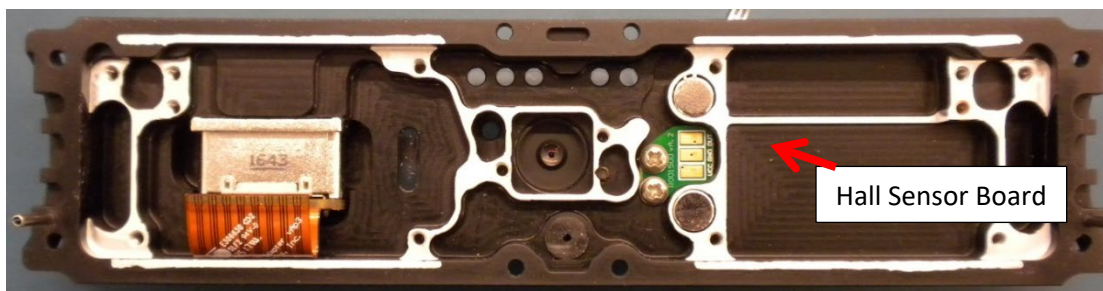


Figure 10: Hall Sensor Board, installed

Interface Board

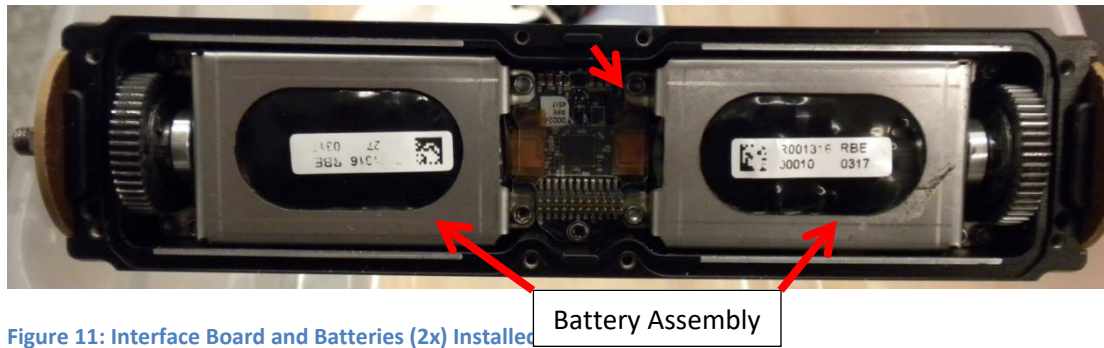


Figure 11: Interface Board and Batteries (2x) Installed



Figure 12: Main Board, Installed