



No simultaneous SAR justification for FCC ID: UXX-PHS2000W

The device has WiFi and WiMAX function and supports external 3G dongle.

Simultaneous transmission mode for the device is as below

1. WiFi + WiMAX
2. WiFi + external dongle

WiMAX and external dongle can Not work at the same time.

WiFi and WiMAX

Simultaneous Transmission Configurations		WiFi Max. SAR (W/Kg) (1g)	WiMAX Max. Scaled SAR (W/Kg) (1g)	all ^{SAR} _{1g} (W/Kg) (1g)
1	WiFi antenna 1+ WiMAX antenna 1	0.038	0.213	0.251
2	WiFi antenna 1+ WiMAX antenna 2	0.038	0.370	0.408
3	WiFi antenna 2+ WiMAX antenna 1	0.015	0.213	0.228
4	WiFi antenna 2+ WiMAX antenna 2	0.015	0.370	0.385

Since the sum of SAR value is less than 1.6 W/kg, therefore simultaneous Transmission SAR for WiFi and WiMAX is not required

WiFi and external dongle

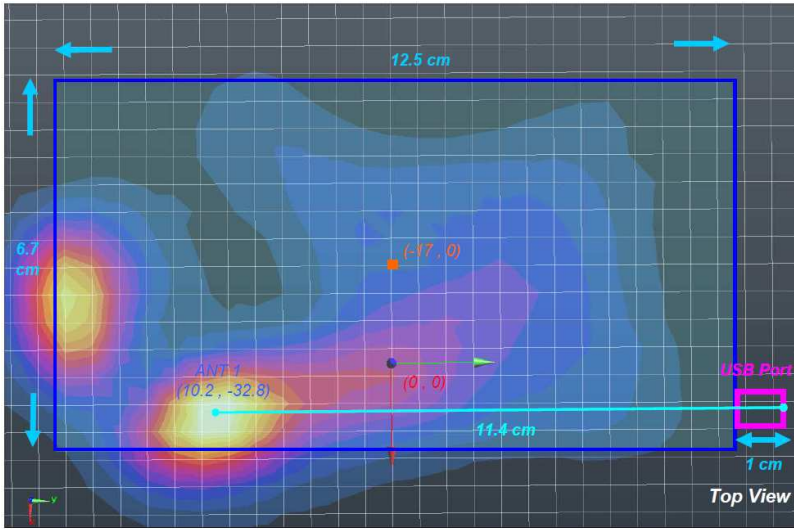
Simultaneous Transmission Configurations		WiFi SAR (W/Kg)(1g)	External dongle (W/Kg) (1g)	Separation distance(cm)	SPLSR _{xy}
5	WiFi antenna 1+ External dongle	0.038	1.6	11.4*	0.14
6	WiFi antenna 2+ External dongle	0.015	1.6	12.1*	0.13

*Please check plots of P2

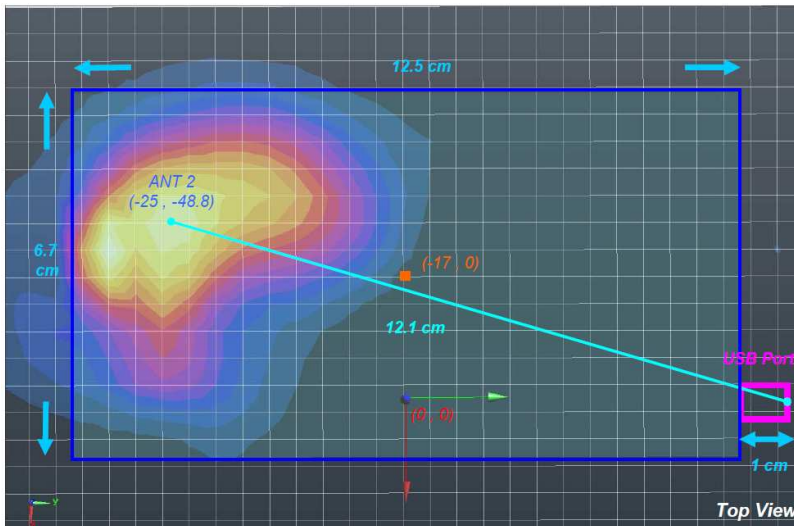
Since the **SPLSR_{xy}** is less than 0.3, therefore simultaneous Transmission SAR for WiFi and external dongle is not required



WiFi antenna 1 test plot



WiFi antenna 2 test plot



Combined test plot

