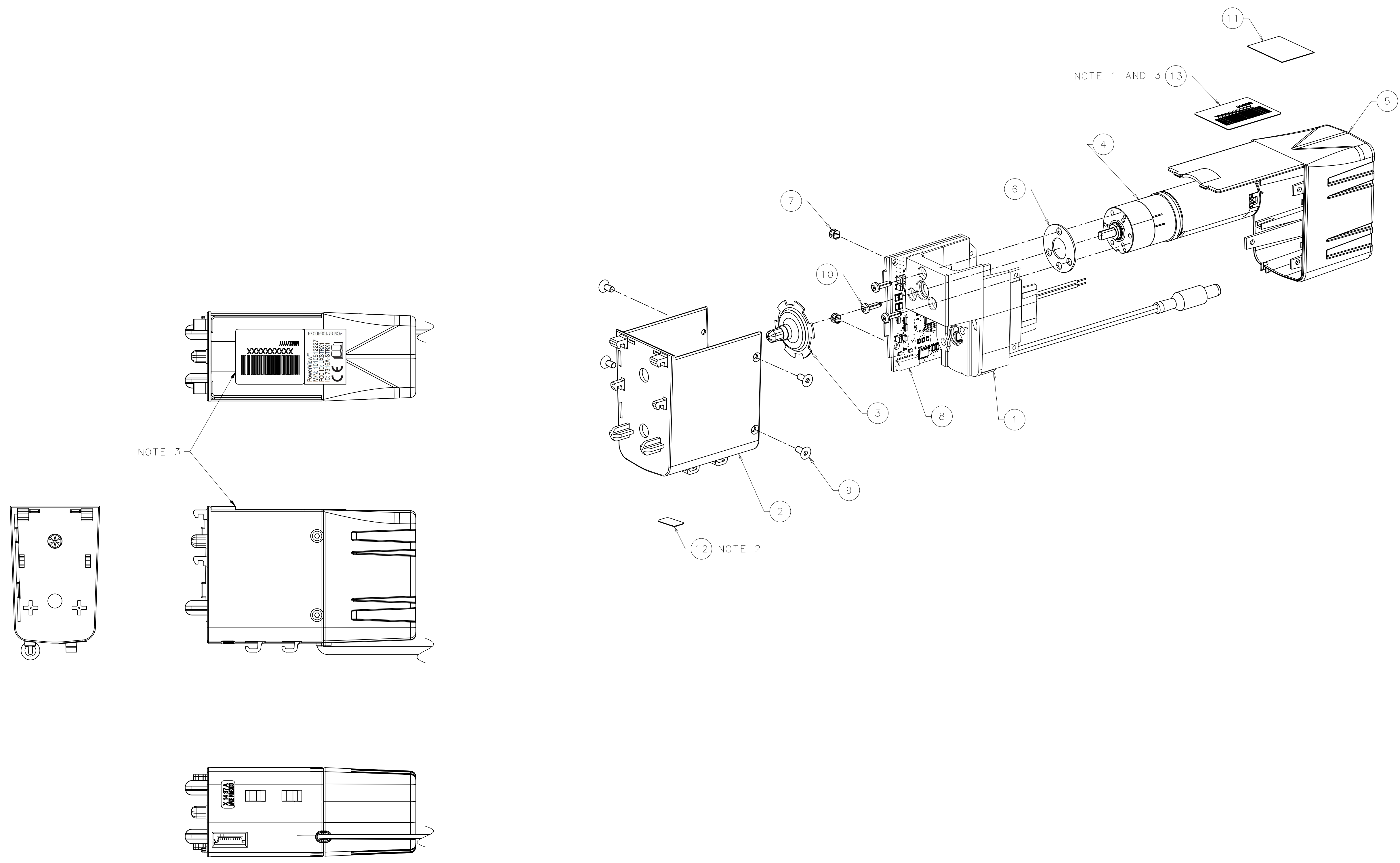


NOTES:

1. PCN: 750500000
2. ITEM 12 TO BE YELLOW IN COLOR
3. ITEM 13 TO BE FLUSH WITH BUMP FEATURE, ALL OTHER STICKER LOCATIONS ARE APPROXIMATE

REVISIONS					
REV	DESCRIPTION	CREATED	CHECKED	CR NO.	DATE
A	RELEASE FOR PRODUCTION	DBM	RH	21792	09/19/2014
B	1. NAME WAS: *MOTOR HOUSING ASSY, SKYLINE, PV* IS: *MOTOR HSG ASSY, LH, SKYLINE, PV* 2. ITEM 8 NAME WAS: *PCB WIRE ASSEMBLY, SKYLINE, PV* IS: *PCB WIRE ASSEMBLY, LH, SKYLINE, PV* 3. ADDED NOTE 2	DBM	RH	21816	10/20/2014
C	1. ADDED ITEM 11 2. ADDED ITEM 12 AND REWORDED NOTE 2 3. ADDED ITEM 13 AND NOTE 3 4. SHEET SIZE WAS C 15 D	DBM	DBM	21988	01/06/2015



NOTE 3

NOTE 2

NOTE 1 AND 3

WHITE WIRE (-)
BLACK WIRE (+)

ITEM	QTY	PART NAME	PART NO.
13	1	STICKER, PTL BARCODE	1004000517
12	1	STICKER, SMK TRACKING	1004000516
11	1	STICKER, LUM FCC	PCN 5110540074
10	3	SCR-TF-PNH-TORX M2.5 X 8.00	HMSPP05MCY008
9	4	SCR-FHSHCS M3-0.50 X 6	HMSFH0203C006
8	1	PCB WIRE ASSEMBLY, LH, SKYLINE, PV	1010512155
7	2	SNAP PIN, PCA	1004000073
6	1	PAD, VIBRATION DAMPER-MOTOR	1004000052
5	1	COVER, MOTORS	1004000051
4	1	MOTOR, POWERGLIDE TRAVERSE	1004000050
3	1	TRAVERSE SHAFT, PGM	1004000046
2	1	HOUSING, PCA	1004000035
1	1	BASE, MOTOR MOUNT	1004000034

Proprietary Information Notice: HUNTER DOUGLAS INC. © 2007
 THIS DRAWING CONTAINS PROPRIETARY AND/OR CONFIDENTIAL INFORMATION WHICH SHALL NOT BE REPRODUCED, TRANSFERRED TO OTHER DOCUMENTS, DISCLOSED TO OTHERS, OR USED FOR ANY OTHER PURPOSE WITHOUT THE PRIOR WRITTEN PERMISSION OF HUNTER DOUGLAS WINDOW FASHIONS, INC. THIS PROPRIETARY INFORMATION NOTICE APPLIES TO ALL SHEETS OF THIS DRAWING.

ALL DIMENSIONS AND TOLERANCES ARE IN INCHES UNLESS OTHERWISE NOTED

TOLERANCES UNLESS NOTED	APPROVALS				
DECIMAL .X ± .XXX	DO NOT SCALE DRAWING			TITLE	MOTOR HSG ASSY, LH, SKYLINE, PV
DECIMAL .XX ± .XXX	DRAWN BY			DATE	07/29/14
DECIMAL .XXX ± .XXX	DBM			DRAWING NO.	1010512154
ANGLE ± .XX°	RELEASED BY	SIZE	D		
SCALE 1:1	S. WISECUP	SHEET NO.	1 of 1		
		REV	C		