

Test Setup Photos



Figure 1 - EUT Test Setup, 30MHz – 1GHz

Test Setup Photos

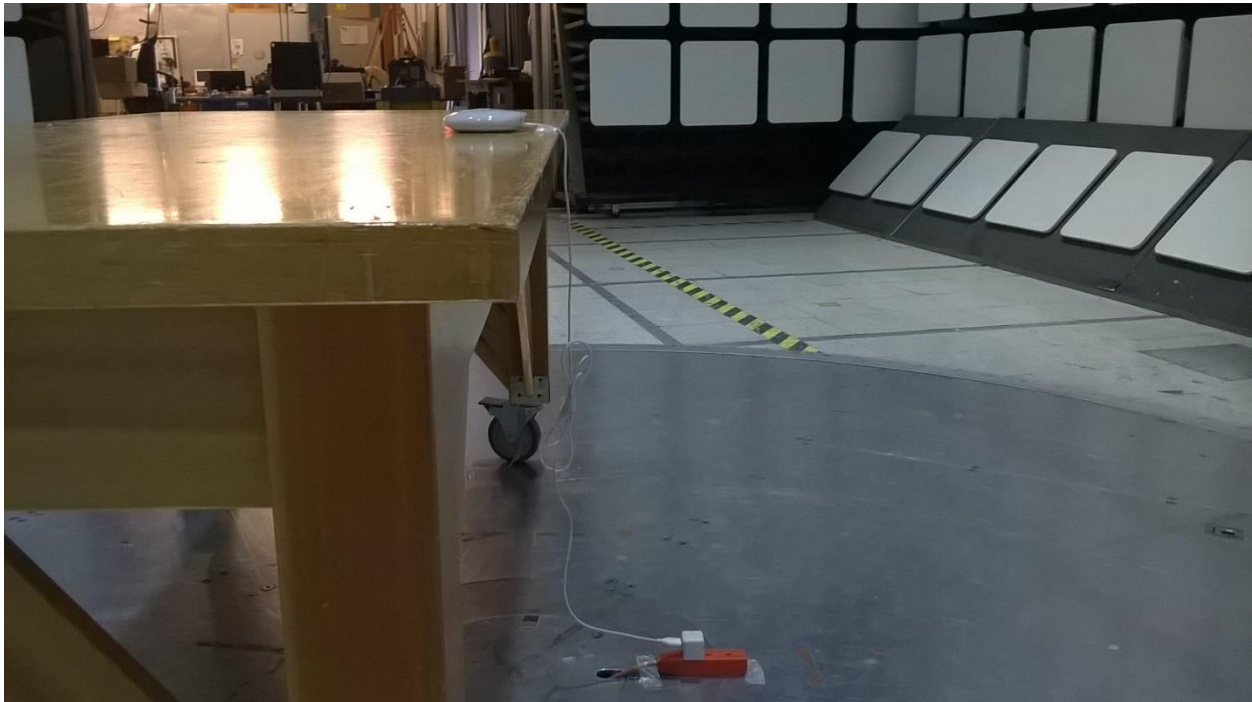


Figure 2 - EUT Test Setup, 30MHz - 1GHz

Test Setup Photos

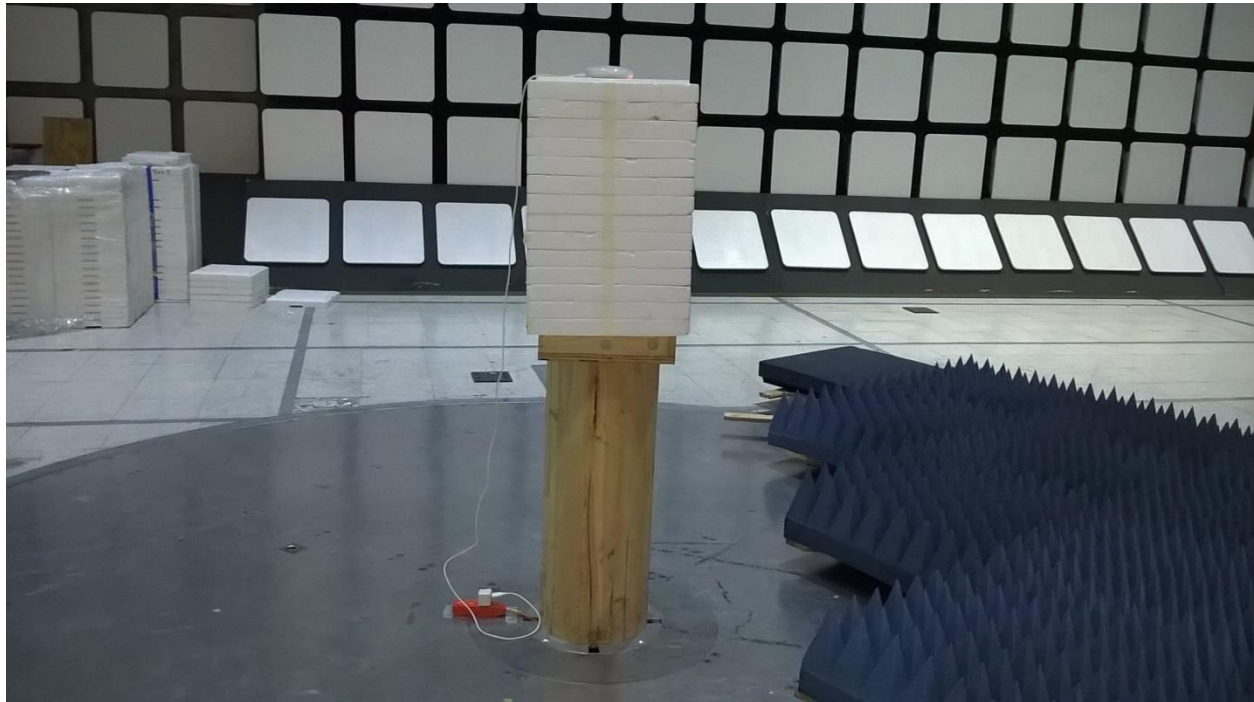


Figure 3 - EUT Test Setup - 1GHz - 27 GHz

Test Setup Photos



Figure 4 - x-axis

Test Setup Photos

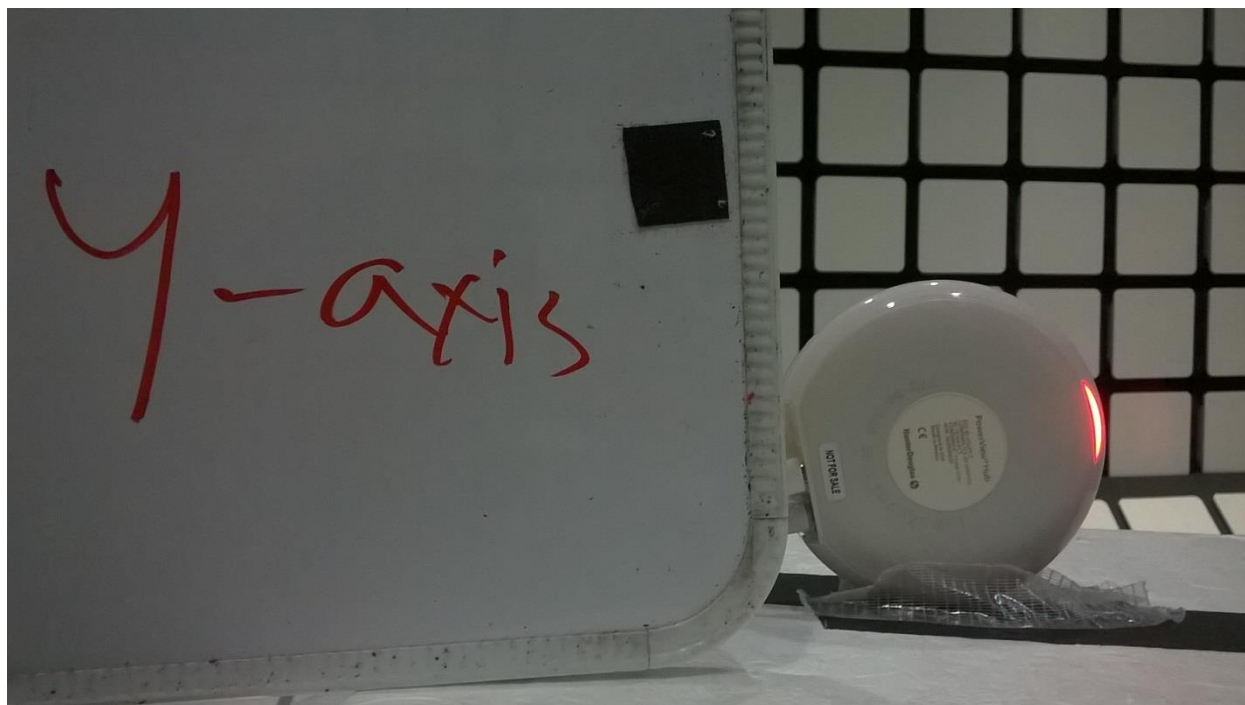


Figure 5 - y-axis

Test Setup Photos

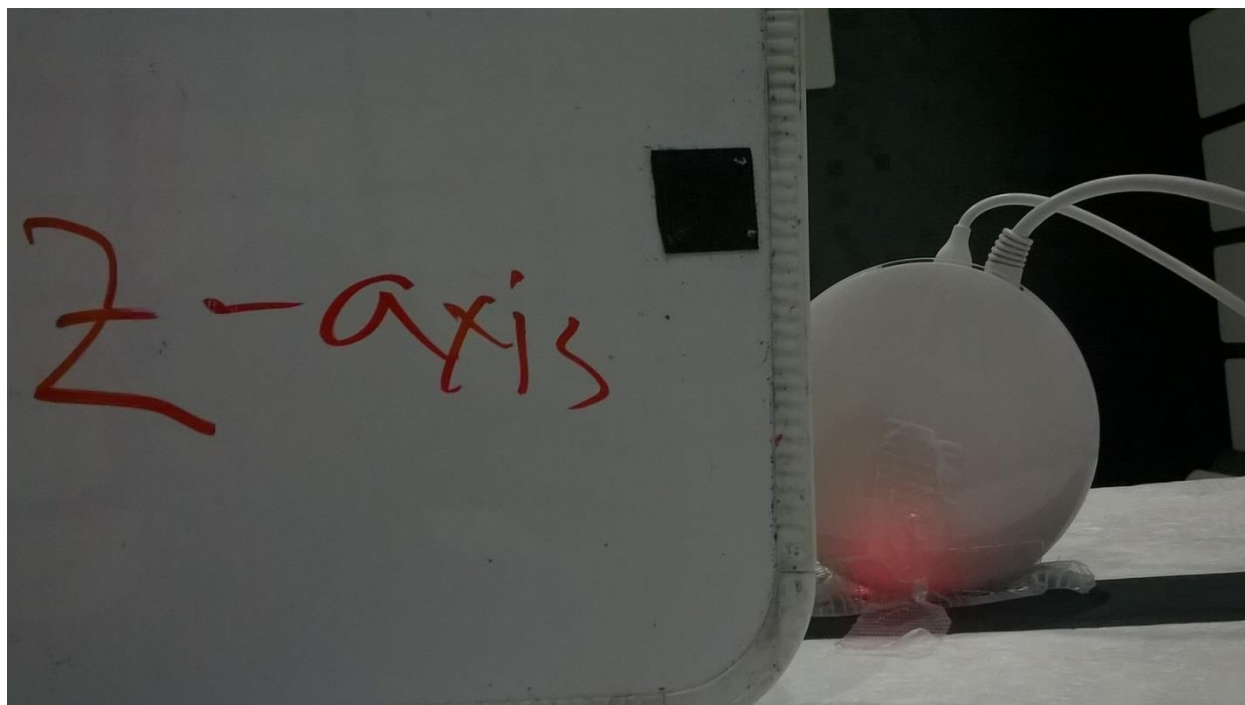


Figure 6 - z-axis

Test Setup Photos

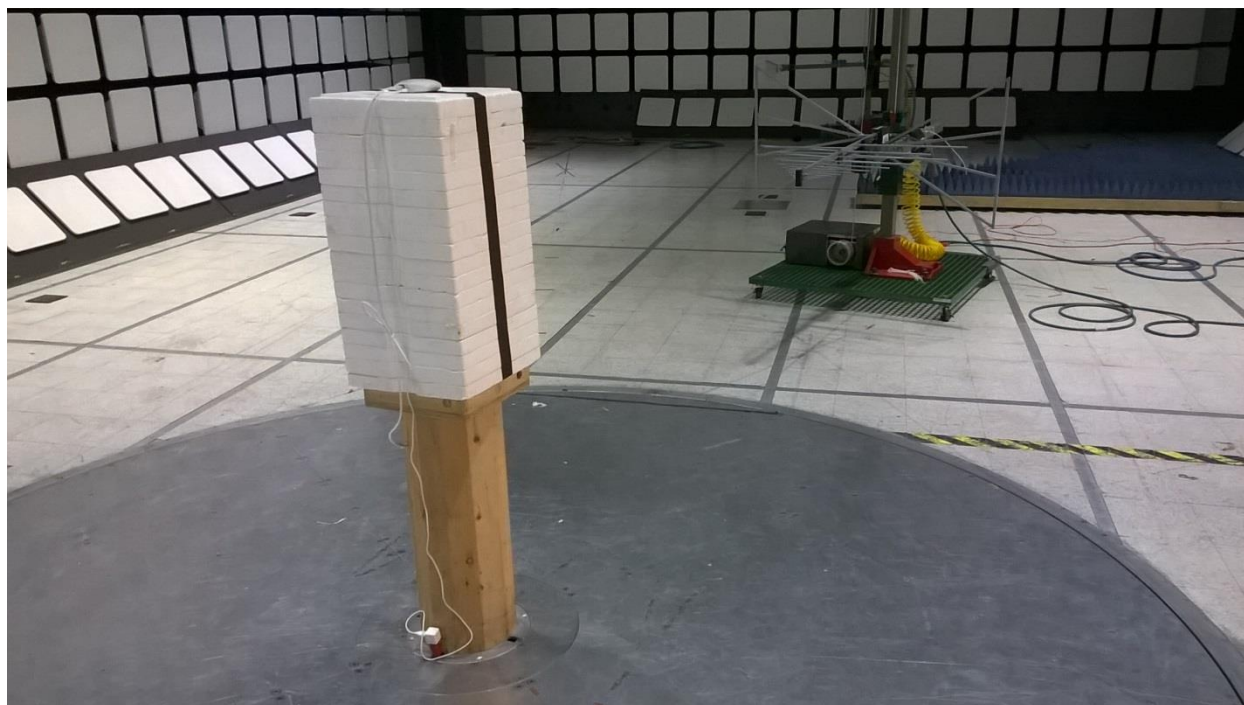


Figure 7 - Radiated emissions test setup, 1 - 25 GHz

Test Setup Photos



Figure 8 - Conducted AC emissions Test Setup, 150kHz - 30MHz



Test Setup Photos

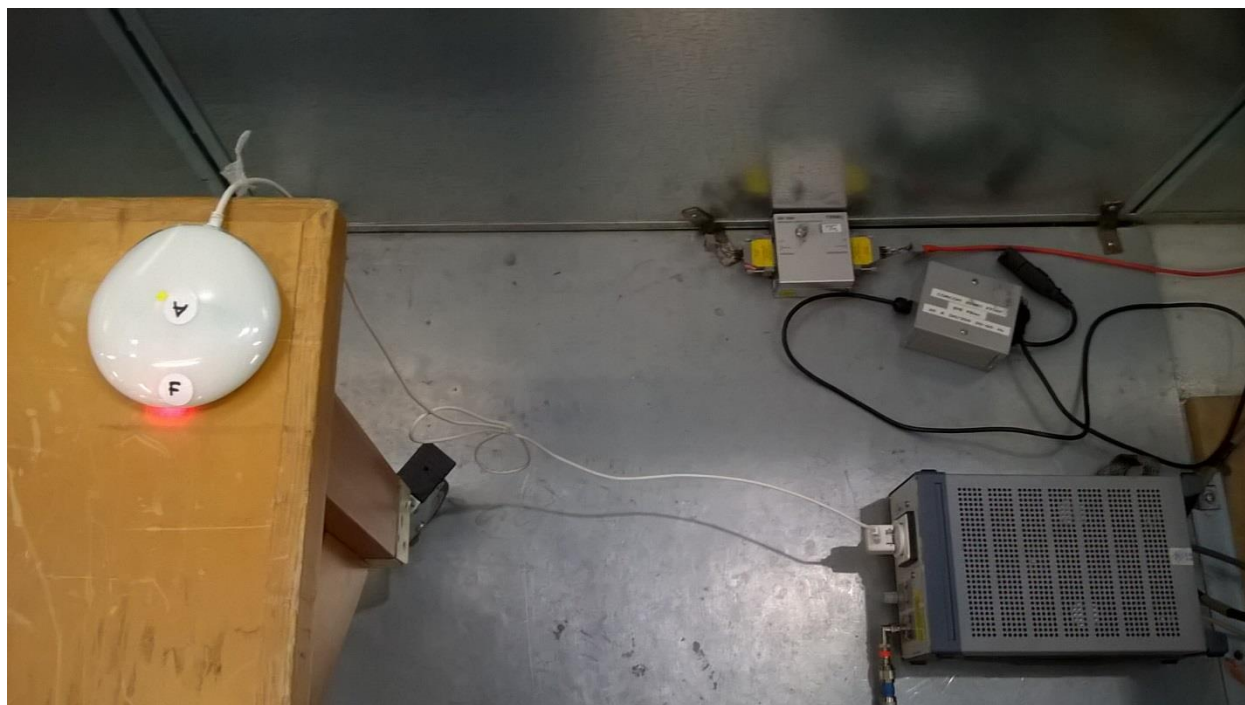


Figure 9 - Conducted AC emissions Test Setup, 150kHz - 30MHz

Test Setup Photos



Figure 10 - Power supply used for testing

Test Setup Photos

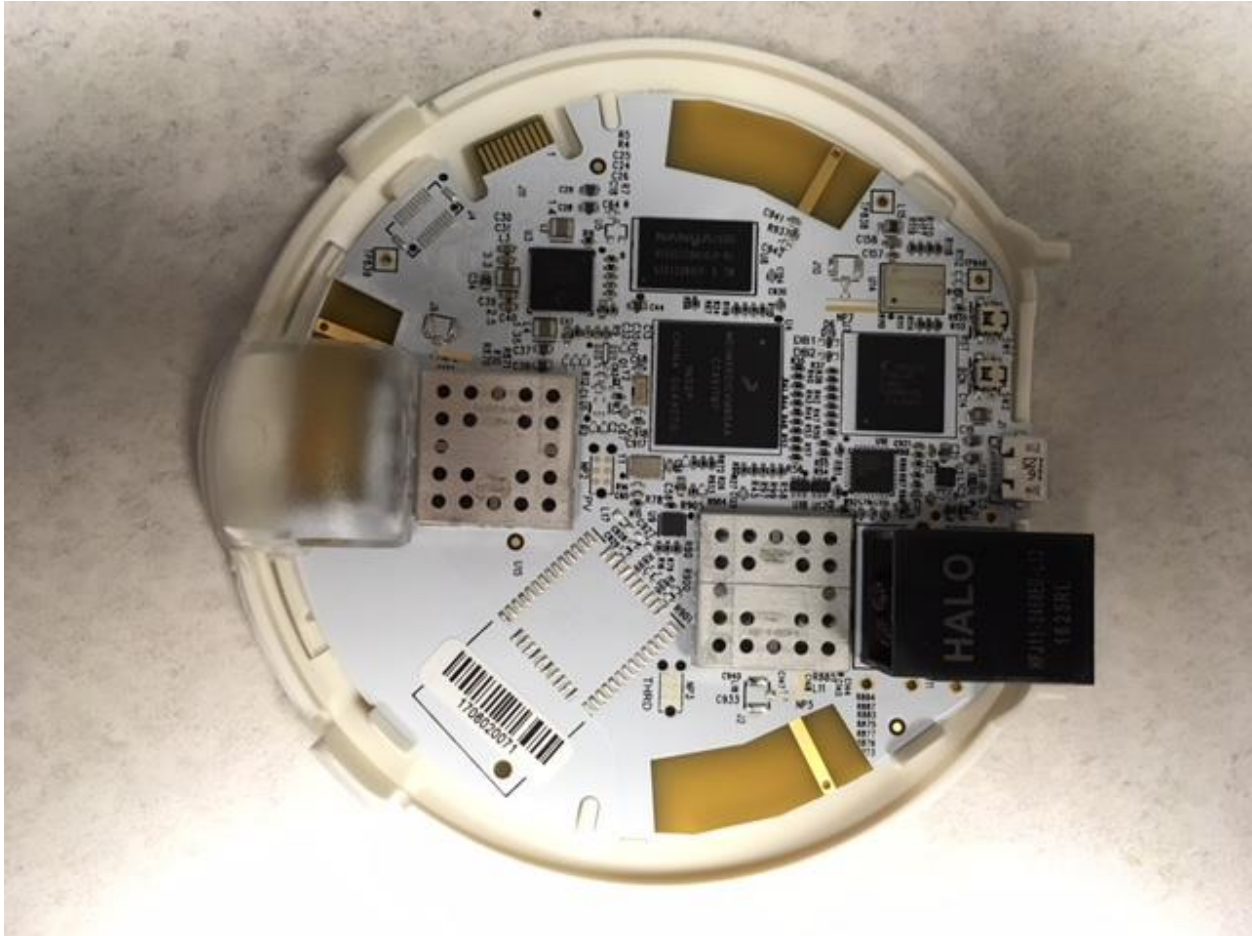


Figure 11 - EUT 1

The photo above shows the EUT that was tested. This is not exactly the same as the device under certification. See the internal photos exhibit and Figure 11 of this document for a photo of the device under certification.

Test Setup Photos



Figure 12 – EUT 2

The photo above is identical to the device under certification. EUT 1 shown in Figure 11 was tested. EUT 2 shown in Figure 12 above was briefly verified to ensure that the removal of the transmitter module did not affect the test results.