

Addlogix Wireless PC2TV InternetVue 2000

User's Guide

Version 3.01.10 or later

Table of Contents

1	INTRODUCTION	4
1.1	PRODUCT DESCRIPTION	4
1.2	PRODUCT SPECIFICATION	4
1.3	MINIMUM SYSTEM REQUIREMENTS	5
2	HARDWARE SETUP	6
2.1	ATTACHING INTERNETVUE 2000 TO A TELEVISION OR MONITOR	6
3	SOFTWARE SETUP	7
3.1	INSTALLING SOFTWARE	7
3.2	UNINSTALLING THE SOFTWARE	8
4	INTERNETVUE 2000 SOFTWARE APPLICATION	9
4.1	USING THE CONFIGURATION WIZARD	9
4.2	USING THE SOFTWARE	13
4.3	ADVANCED SETTINGS	15
5	TROUBLESHOOTING	22
6	FAQ	25

List of Figures

FIGURE 2: INTERNETVUE 2000 SPLASH SCREEN	6
FIGURE 3: CONFIGURATION WIZARD WELCOME SCREEN	9
FIGURE 4: CONFIGURATION WIZARD PASSWORD SETUP SCREEN	10
FIGURE 5: CONFIGURATION WIZARD DEVICE SETTINGS SCREEN	10
FIGURE 6: CONFIGURATION WIZARD WIRELESS SETTINGS SCREEN	11
FIGURE 7: CONFIGURATION WIZARD CONFIGURATION SUMMARY SCREEN	12
FIGURE 8: INTERNETVUE 2000 APPLICATION	13
FIGURE 9: INTERNETVUE 2000 WIRELESS DISPLAY LIST	13
FIGURE 10: APPLICATION HELP SCREEN	15
FIGURE 11: INTERNETVUE 2000 APPLICATION	15
FIGURE 12: INTERNETVUE 2000 APPLICATION	16
FIGURE 13: GENERAL – VIDEO SETTINGS SCREEN	17
FIGURE 14: GENERAL – CONFIGURATION SUMMARY SCREEN	18
FIGURE 15: DISPLAY CONNECTION – WIRELESS CHANNEL NUMBER SCREEN	19
FIGURE 16: INTERNET CONNECTION – TCP/IP SCREEN	19
FIGURE 17: INTERNET CONNECTION – WIRELESS SETTINGS SCREEN	20
FIGURE 18: ADVANCED – PASSWORD SETUP SCREEN	21
FIGURE 19: ADVANCED – UPGRADE FIRMWARE SCREEN	21

1 Introduction

1.1 Product Description

The Addlogix Wireless PC2TV InternetVue 2000 device is a graphics/video converter that enables you to wirelessly connect your desktop or laptop computer to any display such as a television, projector, or computer monitor.

The device has its own software (*Wireless PC2TV InternetVue 2000 application*) that allows you to control viewing options and configure predefined settings so that future connections are simple and easy.

1.2 Product Specification

Hardware Overview	
Video Connector	<ul style="list-style-type: none">• DVI-I• VGA
Audio Connector	<ul style="list-style-type: none">• 1 x 3.5mm audio jack• 2 channel stereo
Network	<ul style="list-style-type: none">• RJ45 10/100 Mbps Ethernet• Wireless 802.11 g
Power Supply	<ul style="list-style-type: none">• DC 5V 2A

1.3 Minimum System Requirements

Operating System
<ul style="list-style-type: none">• Microsoft Windows 2000 Professional (SP4)• Windows XP Home / Professional Edition SP2• Windows Vista
Computer System
<ul style="list-style-type: none">• Pentium 4 or M >1.5 GHz¹• 512 MB of RAM• 802.11b/g capability (built-in or external adapter)²• 10MB free hard drive space

¹ Dual-core recommended

² 802.11g is required for full-motion video

2 Hardware Setup

2.1 Attaching InternetVue 2000 to a Television or Monitor

1. Connect a DVI or VGA cable to the appropriate DVI or VGA port on the InternetVue 2000.
2. Connect the other end of the cable to the appropriate DVI or VGA port on the television, projector or monitor.
3. To enable audio, connect a stereo cable from the television, monitor or external speakers to the stereo jack connector on the InternetVue 2000.
4. To enable access to the Internet (optional), connect a network cable to the 10/100M Ethernet port on the InternetVue 2000.
5. Connect the power supply to the power port on the InternetVue 2000.
6. After connecting power, the television or monitor to which the Internet 2000 is attached shows the PC2TV screen, This indicates that the InternetVue 2000 is connected.

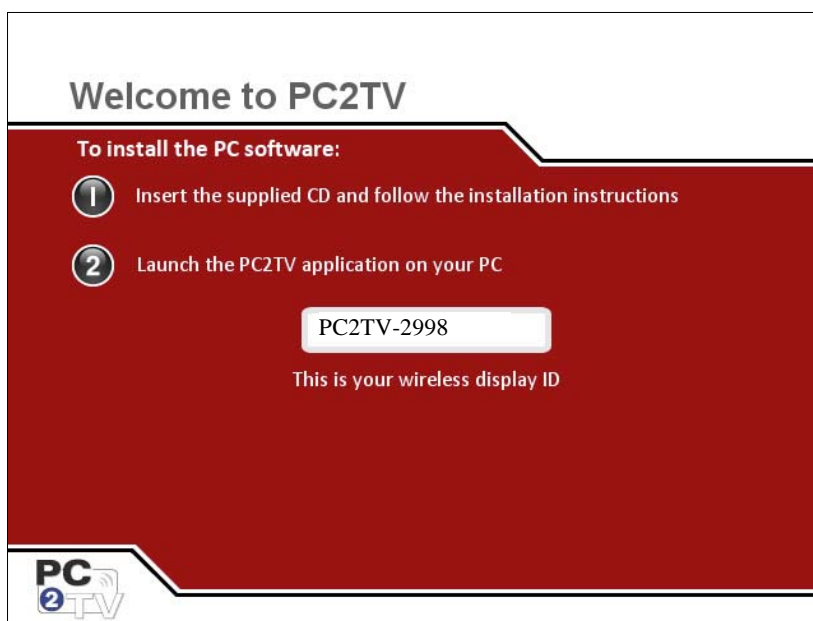


Figure 1:InternetVue 2000 Splash Screen

Note the screen contains a display ID.

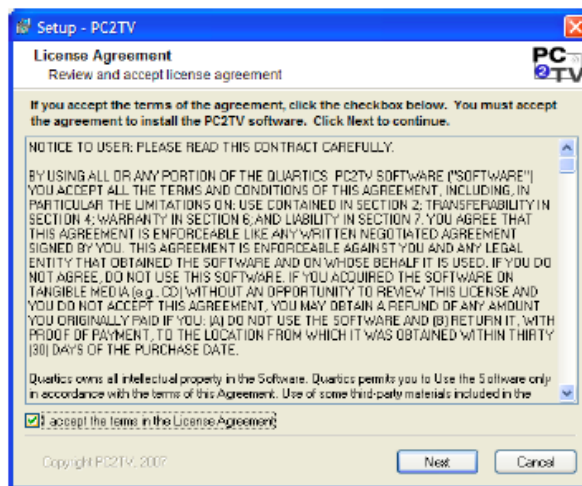
This display ID, also known as the SSID, is unique to each InternetVue 2000. The SSID is needed to connect your computer to the InternetVue 2000.

3 Software Setup

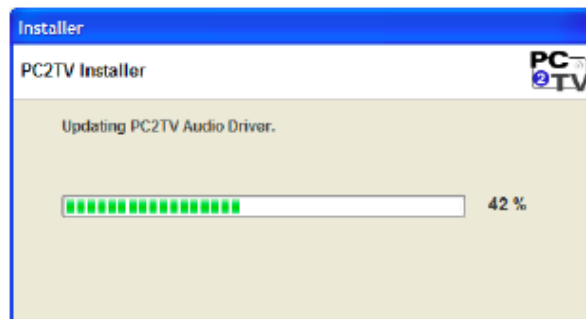
3.1 Installing Software

Before you install the InternetVue 2000 software, remove any earlier version of the InternetVue 2000 software installed on the computer. See “Uninstalling Software” for removal instruction.

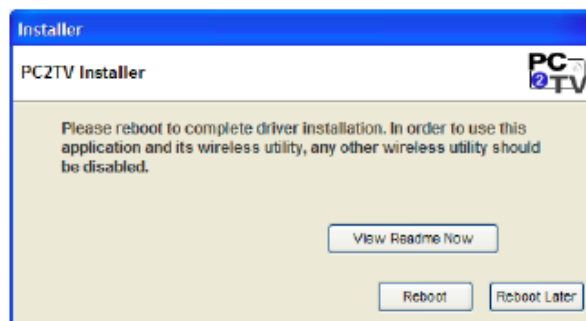
1. Load the CD that came with the InternetVue 2000 into the computer CD/DVD drive. The Setup program should Auto-Start (or click on PC2TVSetup.exe to start the program)
2. Select the License Agreement checkbox and click **Next**.




3. The software will automatically start to install.



4. Click **Reboot** when the installation is complete.



5. Click on , the InternetVue 2000 icon to launch the application and your computer screen should be projecting on the television, projector or computer monitor.

3.2 Uninstalling the Software

1. Click **Start** and navigate to **All Programs > PC2TV**
2. Click **Uninstall** and the software removal process will begin.
3. When the un-installation process is finished, reboot your PC.

4 InternetVue 2000 Software Application

4.1 Using the Configuration Wizard

After installing InternetVue 2000 software, on the first application start, the Configuration Wizard will appear to guide you through the initial setup. The Wizard can also be selected by clicking the **Wizard** button in the **Advance View** screen.



Figure 2: Configuration Wizard Welcome Screen

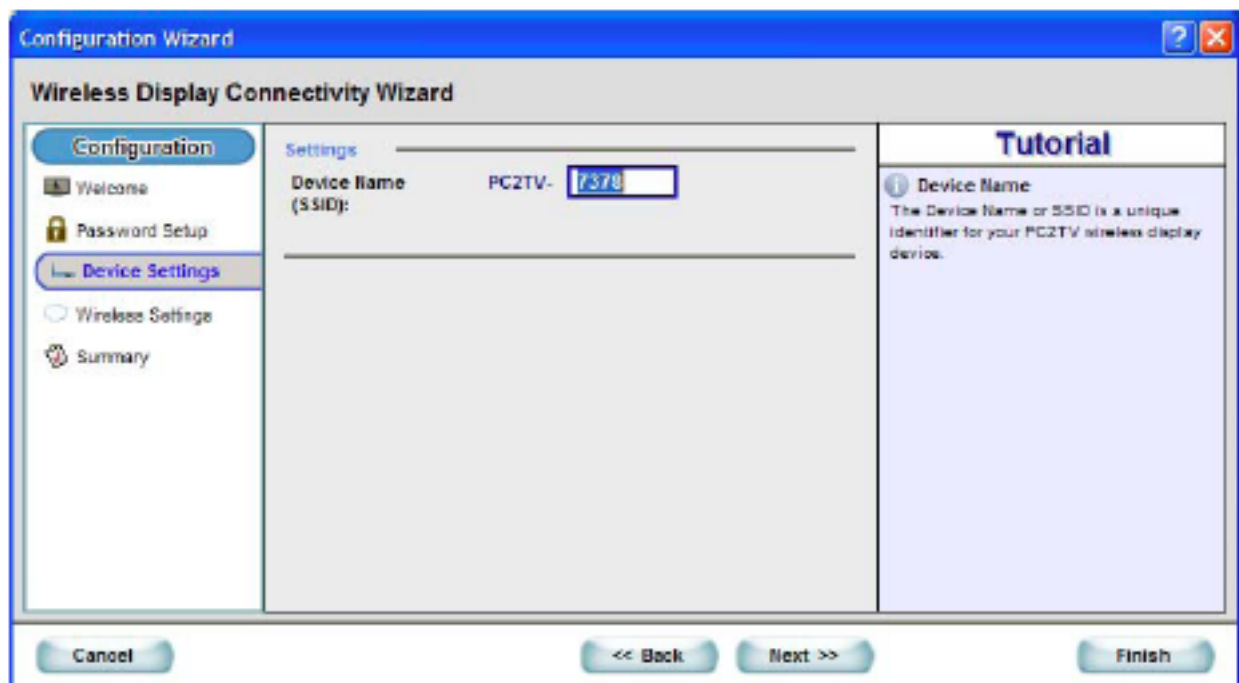
- The wizard guides you through each configuration screen.
- The **Tutorial** section (on the right of the screen), describes the settings available on the screen.
- Click the “Next” or “Back” buttons at any time to move through the Wizard configuration screens.
- Click the “Finish” button (or the “X” in the upper right corner of the screen) to end the Wizard.



The screenshot shows the 'Configuration Wizard' window with the title 'Wireless Display Connectivity Wizard'. On the left, a sidebar lists steps: Configuration, Welcome, Password Setup (highlighted), Device Settings, Wireless Settings, and Summary. The main area is divided into 'Settings' and 'Tutorial'. The 'Settings' section has two text input fields labeled 'Password:' and 'Confirm Password:', followed by a 'Clear' button. The 'Tutorial' section on the right contains two informational blocks: 'Password' explaining that the optional configuration password protects the PC2TV Wireless Display configuration, and 'Confirm Password' stating that the password must be re-entered to ensure it was entered correctly. At the bottom, there are four buttons: 'Cancel', '<< Back', 'Next >>', and 'Finish'.

Figure 3: Configuration Wizard Password Setup Screen

- The Password (optional) restricts access to **Advance** and **Internet Settings**. Password can be up to 32 characters in length.



The screenshot shows the 'Configuration Wizard' window with the title 'Wireless Display Connectivity Wizard'. The sidebar on the left now highlights 'Device Settings'. The main 'Settings' section shows a label 'Device Name (SSID):' followed by a text input field containing 'PC2TV-' and a small box with '7378'. The 'Tutorial' section on the right has a block titled 'Device Name' explaining that the Device Name or SSID is a unique identifier for the PC2TV wireless display device. The bottom navigation bar remains the same with 'Cancel', '<< Back', 'Next >>', and 'Finish' buttons.

Figure 4: Configuration Wizard Device Settings Screen

- The Device Name (optional) allows you to use a name in place of the PC2TV's default display ID. The Device Name can be up to 4 characters in length.

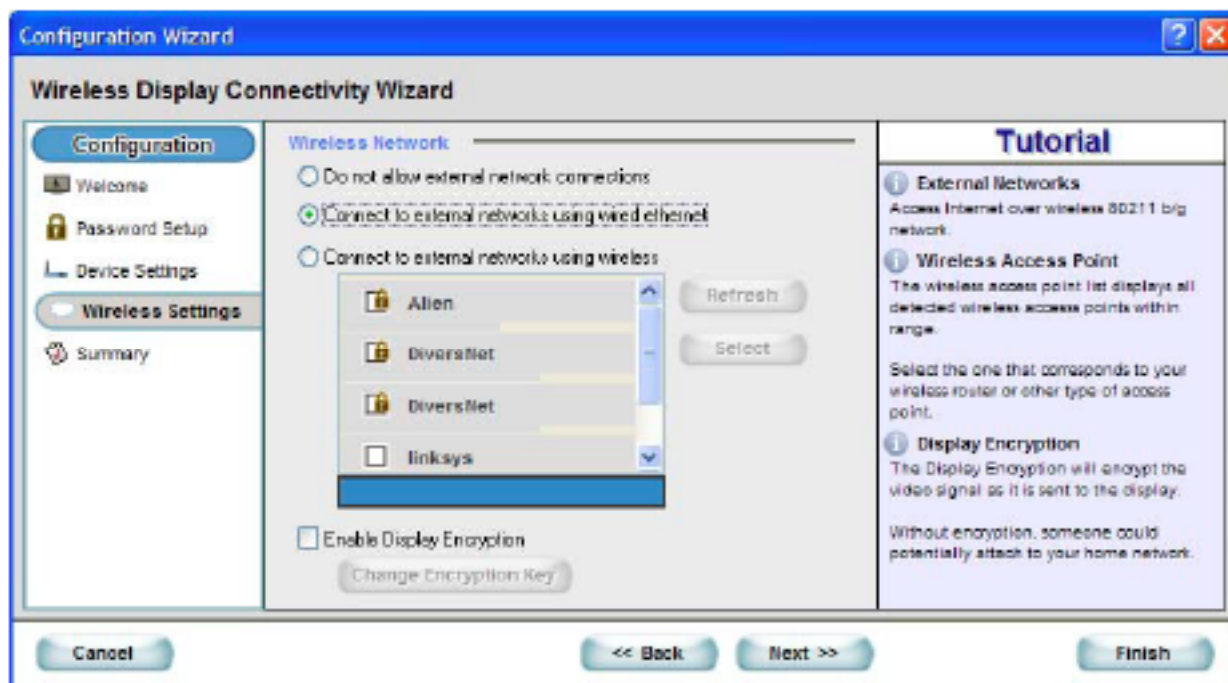


Figure 5: Configuration Wizard Wireless Settings Screen

- The Wireless Network settings allow you to select one of the three possible connection configurations for your PC2TV device:
 1. The “Do not allow external network connections” setting means there is no connection from the PC2TV device (either wireless or Ethernet cable) to the Internet.
 2. The “Connect to external networks using wired Ethernet” setting means you have an Ethernet cable connected to your PC2TV device.
 3. The “Connect to external networks using wireless” setting means you will use the wireless access point (that you select from the list) to connect to the Internet.
- The **Enable Display Encryption** setting (not used with the **Connect to external networks using wireless** setting) allows encrypting the wireless link from your PC to the InternetVue 2000

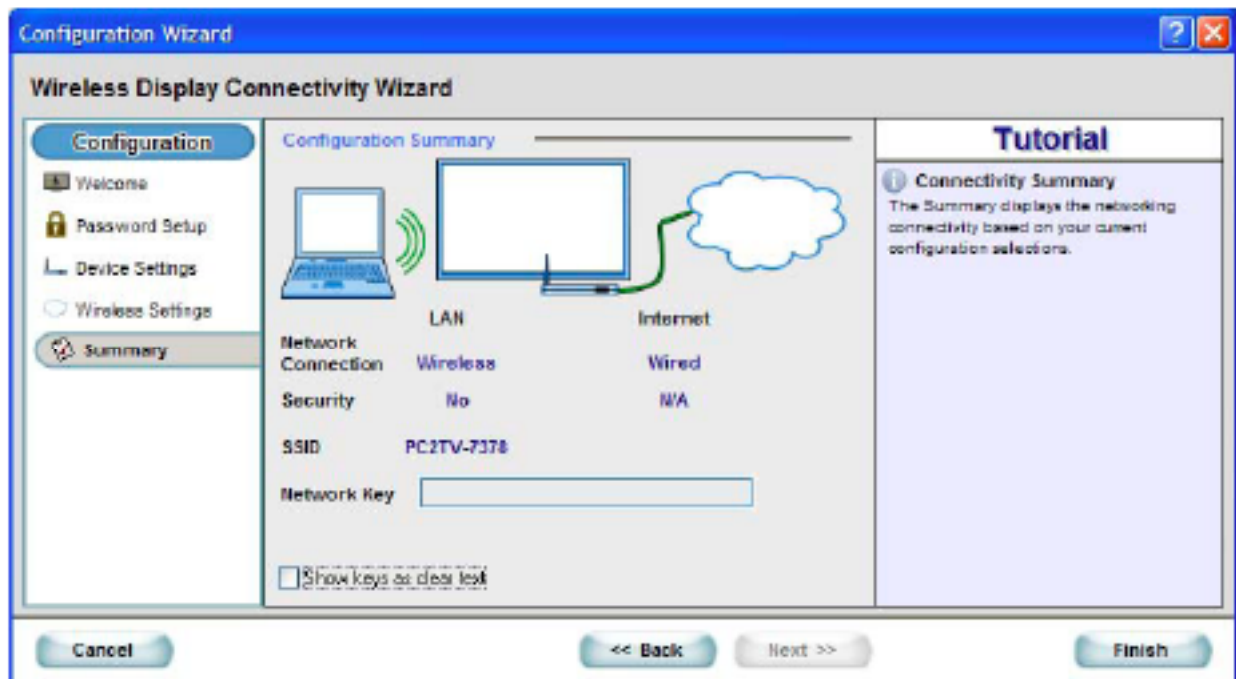


Figure 6: Configuration Wizard Configuration Summary Screen

- The Configuration Summary displays your current configuration settings

4.2 Using the Software

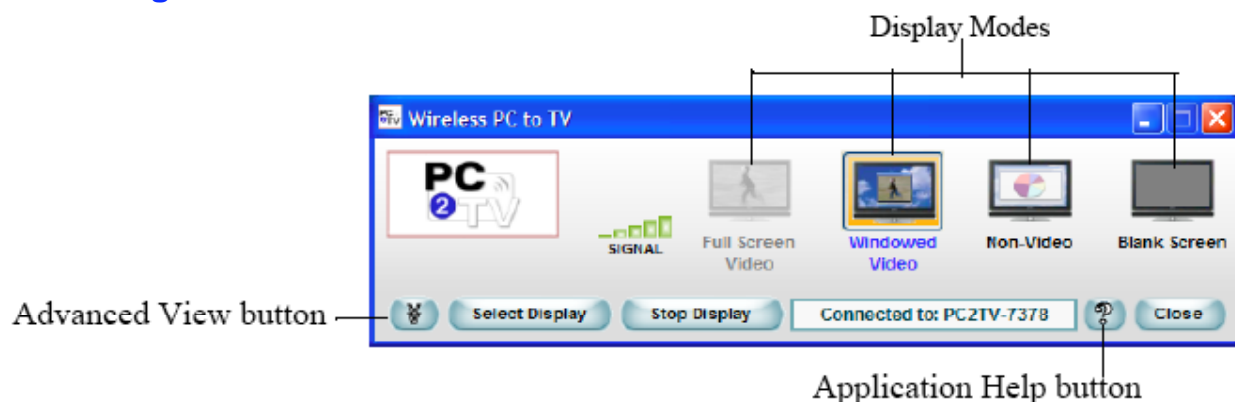


Figure 7: InternetVue 2000 Application

1. At start-up, the application automatically scans for Wireless PC2TV InternetVue 2000 devices.
2. If one InternetVue 2000 is located, the SSID of that device will appear in the Wireless Display List.
3. If multiple InternetVue 2000s are located, the Wireless Display List appears with the SSID of each device. Select the one you want to connect to, and click on **Connect** button.

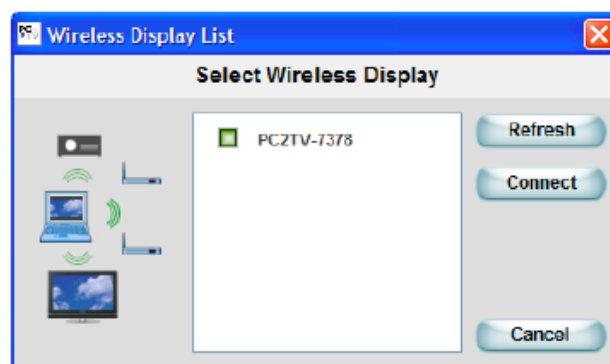


Figure 8: InternetVue 2000 Wireless Display List

Feature	Description
Signal Strength	<p>Indicates the strength of the wireless signal of the connected InternetVue 2000.</p> <p>Four green bars indicates a good signal.</p>
Display Modes	<p>Changes the display on the connected television, projector, or monitor:</p> <ul style="list-style-type: none"> ▪ Full Screen Video — Displays the video in full-screen mode. NOTE: Full Screen Video requires “Extended Mode” (selected in the General, Video Settings screen) and a media player running in the Extended part of your PC display. ▪ Windowed Video — Displays the video in “Windows” mode. Select this option when you want live video displayed in a window or watching embedded internet video. ▪ Non-Video — Select this option when you want to view slide shows, graphics/text applications, or normal web pages. ▪ Blank Screen — Causes a blank screen to be shown on the

	display. Select this option when you want to “hide” the screen.
Advanced View (button)	<p>Expands the InternetVue 2000 application, allowing you to configure advanced settings such as:</p> <ul style="list-style-type: none"> ▪ General - Resolution, Desktop Display, Device Settings, and Configuration Summary. ▪ Display Connection - Wireless Channel Number. ▪ Internet Connection - External Network Connection Wired or Wireless, TCP/IP, and Wireless Settings. ▪ Advanced - Password Setup (Password restricts access to Advanced and Internet Settings.), Upgrade (Upgrade the Wireless PC2TV InternetVue 2000 firmware.)
Select Display (button)	Opens the Wireless Display List, allowing you to search for additional InternetVue 2000 Devices.
Stop Display (button)	Stops the computer from projecting to the television, projector, or monitor. (Your computer remains wirelessly connected to the InternetVue 2000.)
Connection Status	Displays the SSID of the currently connected InternetVue 2000.
Close	Disconnects your computer from the InternetVue 2000 and closes its application.
Application Help	Opens the Application Help information window.

Change Display Modes

Display modes control how your computer projects on the connected television, projector, or monitor.

To change your display mode, click the desired video mode button on the application.

Stopping the Display

To stop your computer from displaying on the connected television or computer monitor without disconnecting from the InternetVue 2000, click the Stop Display button on the application.

Disconnecting from InternetVue 2000

To disconnect your computer from the InternetVue 2000 and close the application:

1. Click the Close button on the Wireless PC2TV application.
2. Click OK when prompted to confirm the disconnection.

Accessing Application Help

To access Application Help, click on the “?” (Application Help) button.

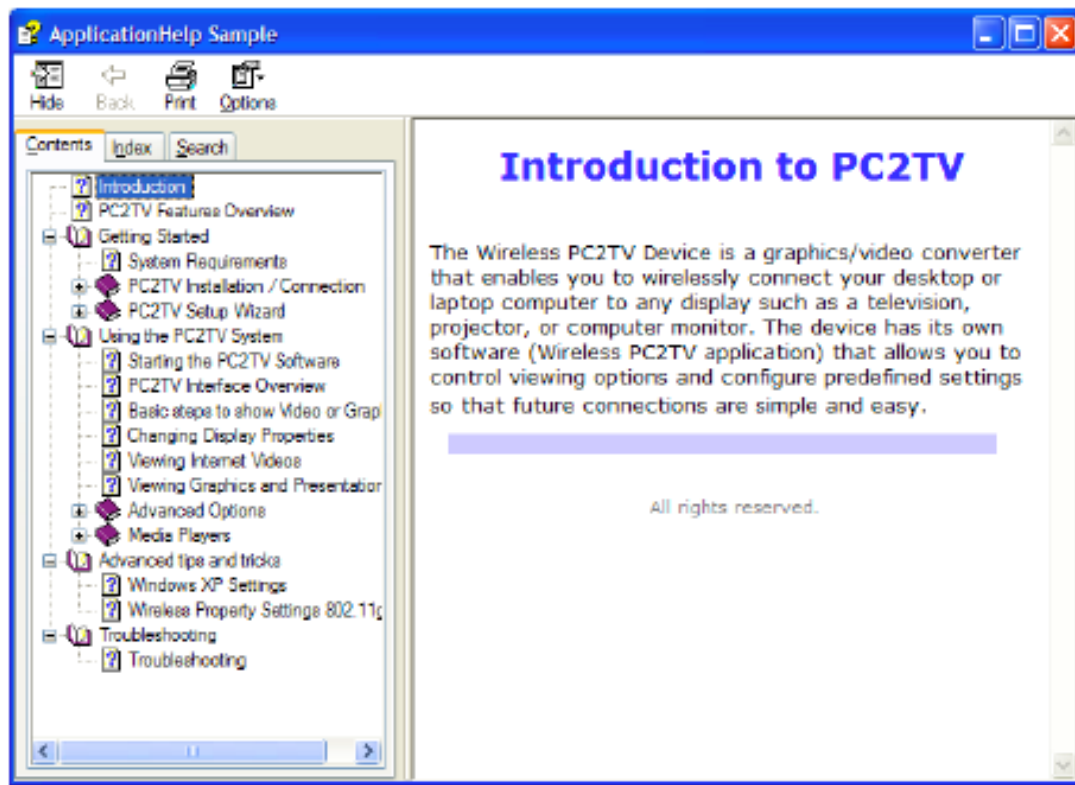


Figure 9: Application Help Screen

4.3 Advanced Settings

To access the Advanced settings, click the **Advanced View** button on PC2TV InternetVue 2000 Application.



Figure 10: InternetVue 2000 Application

The PC2TV InternetVue 2000 application expands to its full view, as shown below:

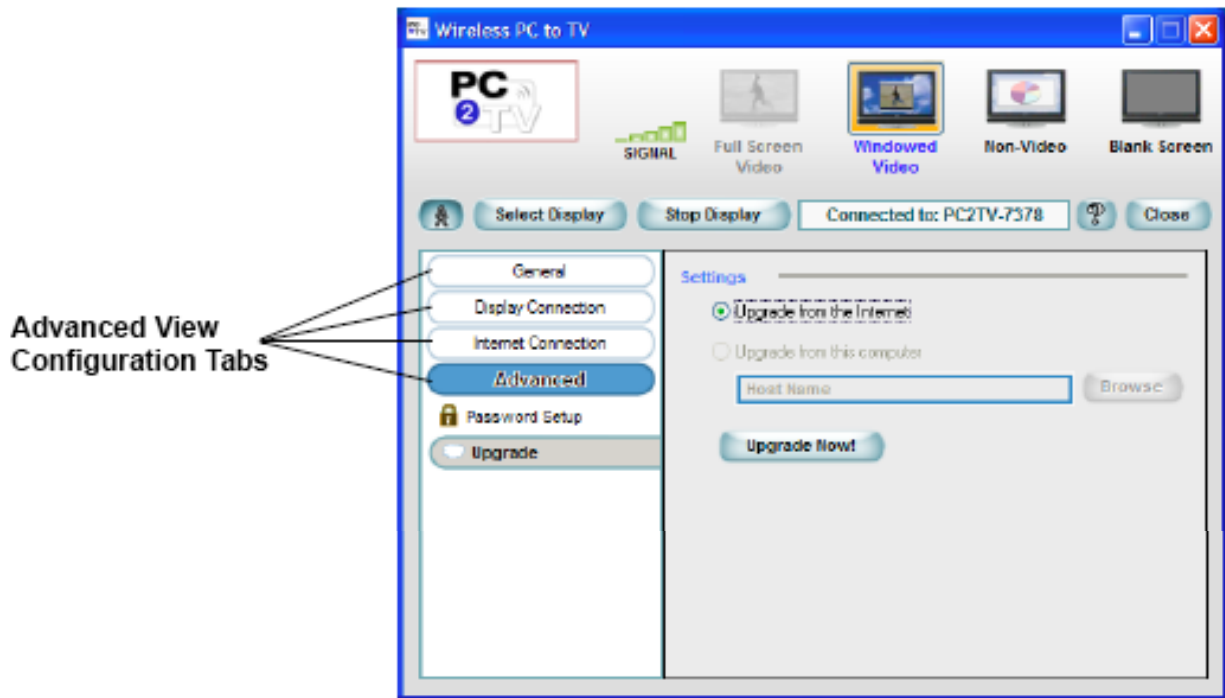


Figure 11: InternetVue 2000 Application

General

Resolution, Desktop Display, Device Settings, and Configuration Summary.

Display Connection

Wireless Channel Number.

Internet Connection

TCP/IP, and Wireless Settings (External Network Connection Wired or Wireless).

Advanced

Password Setup (Password restricts access to Advanced and Internet Settings.), Upgrade (Upgrade the InternetVue 2000 device firmware.)

Video Settings

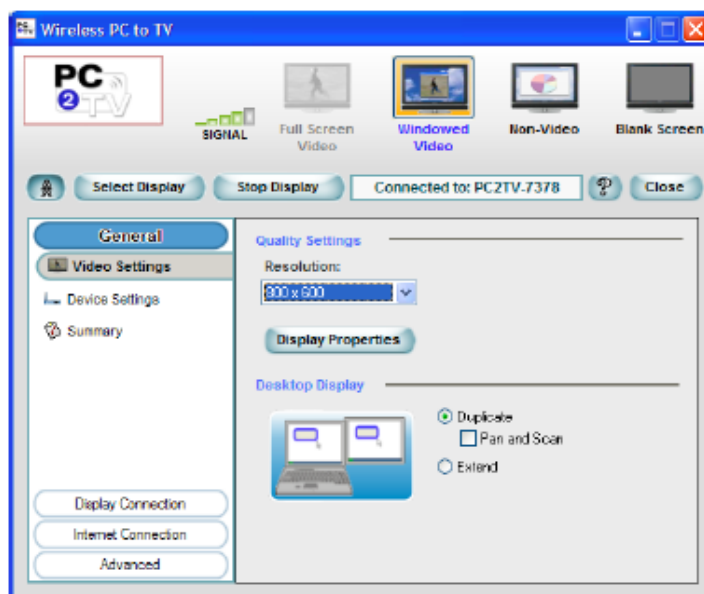


Figure 12: General – Video Settings Screen

- Resolution sets the quality of the image sent from your PC to your TV or Monitor. Increasing the Resolution, increases the amount of data sent over your wireless connection, and may exceed the capability of your wireless network. You should select the lowest resolution that gives acceptable image quality on your TV or Monitor.
- The “Display Properties” button opens your PC Windows Operating System Display Properties screen. Increasing the “Screen Resolution” setting reduces the size of objects on your PC display and increases the total viewing area. Reducing the “Screen Resolution” setting increases the size of objects on your PC display and reduces the total viewing area. You should select the “Screen Resolution” setting that provides the desired image quality on your TV or Monitor.
- Desktop Display configures your PC display mode to: Duplicate, Duplicate with Pan and Scan, or Extended.

Duplicate Mode

The Duplicate setting sends a copy of your PC display to your TV or Monitor.

Duplicate with Pan and Scan

The Duplicate with Pan and Scan setting creates a “Pan and Scan window” that is a small section of your PC display, and sends a copy of the “Pan and Scan window” to your TV or Monitor. You can move the “Pan and Scan window” to any part of your PC display. For example, your PC display may be set to 1024x768, while the “Pan and Scan window” is 640x480.

Extended Mode

Extended Mode must be used to send DVD video to your TV or Monitor. The Extended setting creates a virtual display area outside of the normal viewing area of your PC display, and sends a copy of whatever you drag into the virtual display area to your TV or Monitor. You can use your PC Windows Operating System Display Properties screen to select the

location of the Extended Mode virtual display area (for example, to the right or left of the normal viewing area of your PC display). To send DVD video to your TV or Monitor, start playing the DVD in your media player, and drag the media player into the Extended Mode virtual display area.

Device Settings

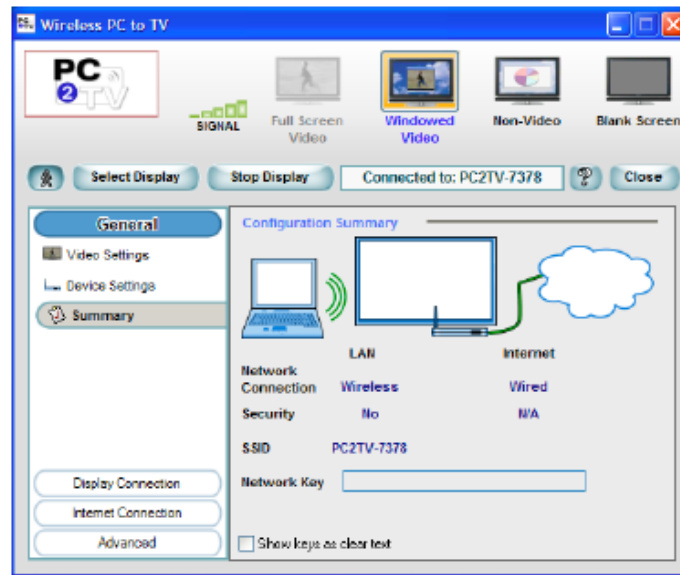


Figure 13: General – Configuration Summary Screen

- **Network Connection LAN** shows the connection from your PC to the PC2TV device.
- **Network Connection Internet** shows the connection from the PC2TV device to an External Network.
- **Security** shows if Encryption is being used for each Network Connection.
- **SSID** shows the PC2TV Device Name.
- **Network Key** displays the Encryption Key, if Encryption is being used.
- The "**Show keys as clear text**" check box hides the Encryption key display.

Wireless Channel Number



Figure 14: Display Connection – Wireless Channel Number Screen

- **Channel** selects one of the wireless channels to use for the connection from your PC to the PC2TV device. You may need to change the wireless channel number to improve video quality, if too many wireless access points in your area are using the same channel number.

TCP/IP

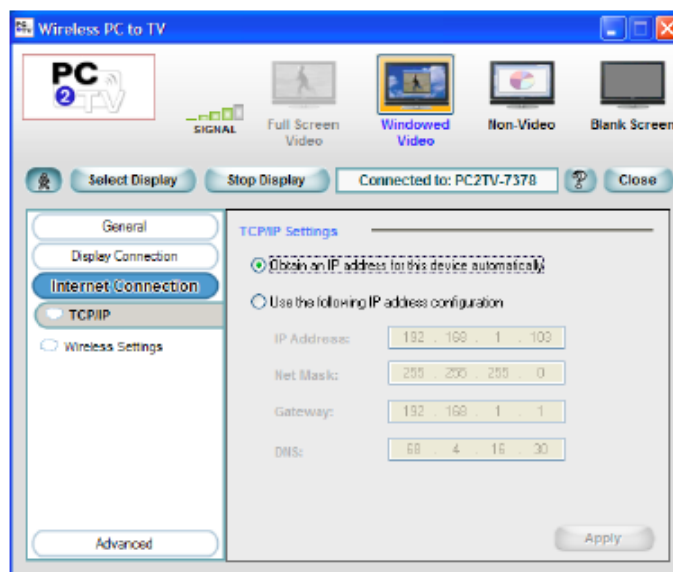


Figure 15: Internet Connection – TCP/IP Screen

- The **Obtain an IP address for this device automatically** setting is recommended
- The **Use the following IP address configuration** setting should only be used by an IT Network Administrator, when required

Wireless Settings

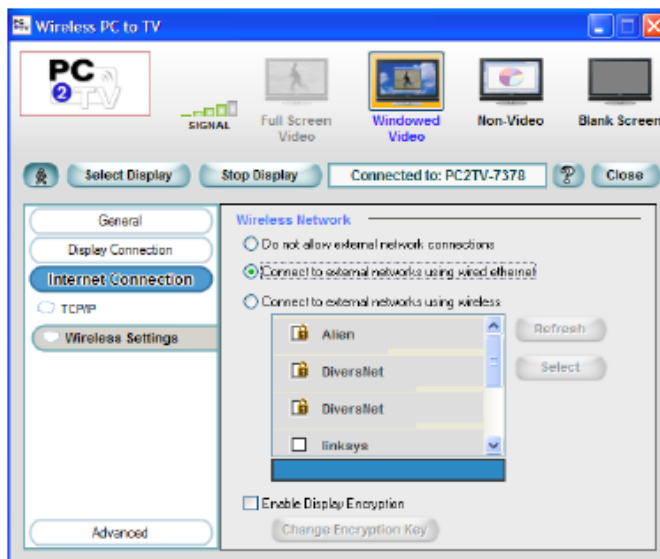


Figure 16: Internet Connection – Wireless Settings Screen

- The Wireless Network settings allow you to select one of the three possible connection configurations for your PC2TV device.
- 1. The “Do not allow external network connections” setting means there is no connection from the PC2TV device (either wireless or Ethernet cable) to the Internet.
- 2. The “Connect to external networks using wired Ethernet” setting means you have an Ethernet cable connected to your PC2TV device.
- 3. The “Connect to external networks using wireless” setting means you will use the wireless access point (that you select from the list) to connect to the Internet.
- Wireless access points shown with a “lock” icon require an Encryption Key. When you select a “locked” item, the Wizard prompts you to enter the Encryption Key required by this wireless access point.
- The “Enable Display Encryption” setting (not used with the “Connect to external networks using wireless” setting) allows encrypting the wireless link from your PC to the PC2TV device.

Password Setup

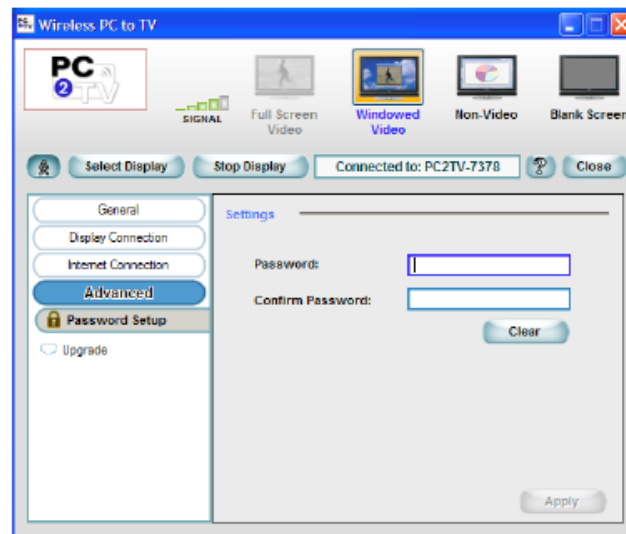


Figure 17: Advanced – Password Setup Screen

- Password restricts access to Advanced and Internet Settings. Password can be up to 32 characters in length.

Upgrade

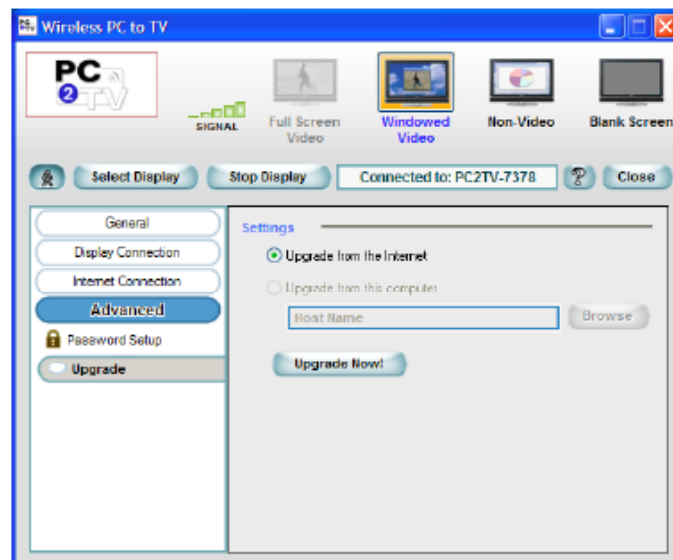


Figure 18: Advanced – Upgrade Firmware Screen

- The “Upgrade Now!” button causes the PC2TV InternetVue 2000 application software to search for firmware updates from the Internet (if “Upgrade from the Internet” is selected) or from your PC (if “Upgrade from this computer” is selected).
- If an upgrade is found, click OK to begin the upgrade.
- Follow the prompts on the screen to complete the upgrade.

5 Troubleshooting

Be sure your PC is on and it's in not standby or hibernate mode. In addition, make sure the PC's wireless network interface is enabled and it supports either 802.11g or 802.11b specification.

Installation Questions and Issues

Do I have to reboot after installing the Wireless PC2TV InternetVue 2000 application?

- After the application is installed, the application checks if the driver installation requires a reboot or not. This determination is made by the Windows operating system. The Wireless PC2TV InternetVue 2000 application simply looks for the Windows' indication. If required, the installation prompts you to reboot your computer. If it's not required, the application launches automatically.

I can't complete the installation of the PC2TV InternetVue 2000.

- There are instances where the wireless install of software/drivers may not be allowed in your network. For example, a laptop may be configured so that third-party software cannot be installed (this is generally the case in corporate environments). In this case, the MIS staff may provide access to the software over a network drive or provide you with an installation CD. The auto-install feature described in the next field allows you to download and install the application from the Wireless PC2TV InternetVue 2000.

Will the Wireless PC2TV InternetVue 2000 work behind a firewall?

- Windows Firewall must be configured to allow the Wireless PC2TV InternetVue 2000 to access the Internet. If third-party firewalls are installed (such as Zone Alarm), they can restrict access to the Wireless PC2TV InternetVue 2000. Either completely disable the firewall or configure it to allow FTP and HTTP traffic through to the device. Also make sure it allows complete network access to/from the Wireless PC2TV InternetVue 2000 application.

Connection Questions and Issues

My display monitor does not show splash screen

- Make sure the wireless video adapter is firmly connected to the display monitor.
- Please check the power adapter is connected.

If your connection to the InternetVue 2000 is intermittent

- Make sure the wireless video adapter is not placed nearby a wireless network router.
- Try changing the wireless video display adapter's channel in network settings.
 1. Click **Settings** on the main wireless video application window.
 2. In the Settings window, click **Network Settings** and use the drop down menu to select a different channel.
- Be sure your wireless video adapter is located at a reasonable distance between the PC. Please refer to 802.11b/g standards for more information.

What WiFi configuration is necessary to use the Wireless PC2TV InternetVue 2000?

- On the computer, check the WiFi configuration to ensure that the wireless radio is enabled and set to Infrastructure mode.
- Each Wireless PC2TV InternetVue 2000 must have a unique SSID. Identical SSIDs on more than one unit will cause unpredictable application behavior. The application may not connect to the desired Wireless PC2TV InternetVue 2000 if more than one has the same SSID. Each Wireless PC2TV InternetVue 2000 is configured with a default SSID embedded in the firmware that cannot be changed. However, through the Wireless PC2TV InternetVue 2000 application, a new SSID can be assigned to the device.
- When the Wireless PC2TV InternetVue 2000 application is launched, it disables the WZC utility and uses Windows NDISUIO to scan for Wireless PC2TV InternetVue 2000s. Some laptop wireless adapter vendors may provide proprietary NDIS utilities and corporate IT departments may use third-party NDIS utilities that may interfere or block Windows NDISUIO functionality.
- When the application cannot locate APs through the NDISUIO API, it generates a message to the user. The user needs to manually connect to the Wireless PC2TV InternetVue 2000 prior to launching the application. Refer to your computer user guide for connection instructions for third-party wireless NDIS module for configuration and management utility.

The Wireless PC2TV InternetVue 2000 application does not connect to the Wireless PC2TV InternetVue 2000

- Check to see if the wireless LAN is activated on the computer. If so, attempt to connect to the device manually via the computer's wireless utility.

The Wireless PC2TV InternetVue 2000 that is powered on does not appear on the list of available wireless networks

The Windows wireless driver may not update its list of available access points. To correct this:

1. Exit the Wireless PC2TV InternetVue 2000 application (if launched).
2. Open the Microsoft WZC utility (or third-party utility that is controlling the wireless access function) and view available wireless networks.
3. Press the Refresh button to update the list of available APs (it may be necessary to refresh once more if the Wireless PC2TV InternetVue 2000 does not appear in the available AP list).

If the Wireless PC2TV InternetVue 2000 still does not appear in the available list, a fresh start is recommended by using the following steps:

- Exit the Wireless PC2TV InternetVue 2000n application (if launched).
- Disable the wireless adapter from Windows "Network and Dialup Connections" dialog box.
- Enable the wireless adapter again.
- Open the WZC window and view available wireless networks to ensure that the Wireless PC2TV InternetVue 2000 is available.
- Re-launch the Wireless PC2TV InternetVue 2000 application.

Cannot connect to the Internet while projecting

If your computer is not projecting to the television or projector, make sure that:

- A wireless connection to the Wireless PC2TV InternetVue 2000 is established.

- An Ethernet network cable is connected either to the Wireless PC2TV InternetVue 2000 or your computer.
- The Wireless PC2TV InternetVue 2000 application is launched.

If you are projecting:

- Check the bullet items listed above.
- Stop projecting from within the application, and then project again.

If the Internet connection still does not work, close the Wireless PC2TV InternetVue 2000 application, and restart it.

What network settings do I need to connect to the Wireless PC2TV InternetVue 2000?

The following changes must be made on the computer to ensure proper operation of the Wireless PC2TV InternetVue 2000 application:

- Under WLAN network properties, enable DHCP.
- Eliminate all proxy server settings manually. (The Wireless PC2TV InternetVue 2000 application does not manage or use proxy settings.) Start Internet Explorer, open Tools > Internet Options > Connections tab. In the Local Area Network (LAN) Settings, the Automatic Configuration setting should be set to Automatic and the Proxy Server should be turned off (unselected).

Video performance seems sluggish, what can be the cause?

- Some laptops have settings that bring down CPU performance when operating on battery power. When this feature is enabled (mostly through default setting), the frame rate is likely reduced and you will see degradation in transitions between images. Check your computer documentation and disable these settings for higher quality.

How do I resolve misc. wireless connection issues?

Make sure you have the latest Intel wireless driver. You can update your Intel driver at: <http://www.intel.com/support/wireless/wlan/sb/cs-010623.htm>

Issues have been found with the following WLAN adapters:

- Intel PRO/Wireless 2915BG Network Connection
- Intel PRO/Wireless 2200BG Network Connection

To determine the wireless adapter that is in use on your computer:

1. Open Windows Start menu.
2. Right-click on My Computer.
3. Select Properties.
4. Choose the Hardware tab.
5. Click on Device Manager.
6. Expand Network adapters.
7. Find the wireless network connection. The model number should be in the title. If not, right-click on the wireless network connection, and choose Properties, General tab. The model number should be displayed.

6 FAQ

General Operation

Can more than one computer project to the same Wireless PC2TV InternetVue 2000/projector combination at the same time?

- The Wireless PC2TV InternetVue 2000 manages users on a first-come, first-served basis. This implies that if one user is projecting, others must wait until the first user closes their Wireless PC2TV InternetVue 2100 application or stops projection.
- If more than one user wants to project to the same display, a window on their computer screen informs them that the Wireless PC2TV InternetVue 2000 is in use (wait mode). Click the Display button after the first user has stopped displaying.
- The Wireless PC2TV InternetVue 2000 supports multiple connections to the same unit, but only one computer is able to project at a time.

What resolutions are supported?

- The current release supports 640x480, 800x600 and 1024x768 for DVI/VGA, 640x480 and 800x600 composite video outputs, and 720x480, 720x576, and 1280x720 for component video output.
- **Which video players are supported?** The Wireless PC2TV InternetVue 2000 supports players that use DirectDraw. It does not support players that use DirectShow.
- It is recommended to use WinDVD 6 or Media Player Classic version 6.4.9.0. You can download this player at: http://www.divx-digest.com/software/media_player_classic.html
- To obtain good quality video, the computer setup and DVD playback should have the following:
 - For showing video playback, the computer must be connected to AC power.
 - For Windows XP, make sure Service Pack 2 is installed.
 - For Windows XP, increase the RAM beyond 512 MB and configure the virtual memory to the maximum setting.

The recommended player is installed, but it still does not work

- Check to see if DirectDraw is enabled.
 1. Open Windows Start, Run, and type: dxdiag
 2. Wait for the diagnostic to run.
 3. Click on the Video 2 tab, which should correspond to the Wireless PC2TV InternetVue 2000.
- If DirectDraw is disabled, click on the Enable button. The DirectDraw players such as WinDVD should now work.

Can the Internet be accessed while projecting through the Wireless PC2TV InternetVue 2000?

- The Internet can be accessed either through the computer, the Wireless PC2TV InternetVue 2000, or a wireless access point (if one already exists while being projected onto the display).
- If the Internet is accessed via the Wireless PC2TV InternetVue 2000, it is advised that the Ethernet cable be connected to the Wireless PC2TV InternetVue 2000 before it is powered up.
- Note the following special cases:
 - The Ethernet port on the board can have DHCP enabled or STATIC addresses. This can be accomplished from within the Wireless PC2TV InternetVue 2000 application.
 - Port 80 should be open on the LAN to allow access to the Internet.
 - Port 21 should be open on the LAN to allow Wireless PC2TV InternetVue 2000 firmware updates.
 - The DHCP allocation range is 10.0.0.2 through 10.0.0.254 (IP/subnet of Wireless PC2TV InternetVue 2000 Ethernet port should be different than 10.0.0.x).
 - The Wireless PC2TV InternetVue 2000 Ethernet port has a 'dummy' MAC address by default. During the manufacturing process, each device is programmed with a unique MAC address. This is necessary to avoid MAC address conflict and improper operation of the device. Note that with a dummy MAC address, there may be some computers which may not be able to connect to the device.

How are firmware and applications updated?

- To check for firmware/application updates:
 1. Power on the Wireless PC2TV InternetVue 2000 and make sure it has an active Internet connection and FTP port open.
 2. Start the Wireless PC2TV InternetVue 2000 application and select the Settings option.
 3. Select Firmware update.
- The application checks if a newer firmware version is available for download. If a new version is available, the Wireless PC2TV InternetVue 2000 application prompts you for download permission and starts downloading.
- After the firmware update is complete, the Wireless PC2TV InternetVue 2000 must be power cycled.
- The Wireless PC2TV InternetVue 2000 reboots on the new firmware, but the Wireless PC2TV InternetVue 2000 application on the computer must still be updated. This can be done by uninstalling the old version and executing the "auto-install" procedure.

Why is the SSID different when the firmware is upgraded?

- On an upgrade of firmware, the SSID is changed back to its original default. This is done to simplify the software for the upgrade process.

Does Power-Save mode interfere with Wireless PC2TV InternetVue 2000 operations?

- Most laptops have a power management feature (power-save mode) that allows the management of power to its subsystems when the laptop is running on battery power.

- One of the settings is to put the onboard wireless adapter on "power save mode". When this is enabled (default setting in most cases), it makes the wireless adapter go to sleep several times a second to reduce power consumption. This behavior is acceptable for data but for 'real time' applications, like graphics & video display, there is significant adverse impact on the link quality and performance required for this type of application.
- When the Wireless PC2TV InternetVue 2000 application is launched, it disables the "power save" feature of the wireless adapter and enables it when the application is exited. This only applies if the feature is enabled at the time of Wireless PC2TV InternetVue 2000 launch.

After the Wireless PC2TV InternetVue 2000 application closed, my laptop wireless utility stopped working

- If a third-party wireless configuration utility is in control, refer its user's guide to set it to proper operation.
- However, if your computer uses the Windows wireless utility, note the following:
- The Wireless PC2TV InternetVue 2000 application controls the computer's wireless device with standard Windows APIs.
- The application disables the Wireless Zero Configuration (WZC) to ensure Windows does not override any attempt to connect with a Wireless PC2TV InternetVue 2000.
- WZC is an application supplied by Microsoft with the Windows XP platform to scan and associate with desired access points.
- Upon exiting, the Wireless PC2TV InternetVue 2000 application restores the WZC configuration. Typically, WZC starts automatically. If it does not, follow these steps to enable Microsoft WZC manually: Select: Start, Control Panel, Administrative Tools, Services, Wireless Zero Configuration, and select Start the Service.

How can I resolve wireless performance issues in a crowded WLAN environment?

- To resolve performance issues, try changing the channel. (You can change the channel in the Wireless PC2TV InternetVue 2000 application under Device Settings, Network Settings.)
- In crowded WLAN environments, collisions with other APs and clients (stations) and the resultant need for packet retransmissions can result in lower effective throughput between the computer and the Wireless PC2TV InternetVue 2000.
- 2.4GHz WLAN has several available channels. In many cases, changing to a different channel can reduce congestion and improve throughput, improving performance significantly.

Are there configuration parameters to be set for the Audio area?

- The audio settings may need to be configured manually for non-English version of Windows.
 1. Open Volume Control and select Options, Properties.
 2. Select Adjust Volume for Recording.
 3. Click OK and select Stereo Mixer in the Recording Control Panel to capture and play PC Laptop audio from the Wireless PC2TV InternetVue 2000.
 4. Select Mute All under the Volume Control in the Volume Control Panel.

If I have set but forgot my password setting how do I reset it?

- Factory default can be restored by press and hold the “Factory Reset Switch” for the VGA/DVI units or the “Component/Composite Video Switch” for the component/composite units, for five seconds. Once the default setting is restored, you can then reconfigure the settings.

Why does the background text resolution look unclear when video is playing in Windowed mode?

- The software algorithm automatically detects video playing and optimizes for video rather than text/graphics. Quality text/graphics resume whenever the mouse is moved.

How can I play a DVD in extended mode?

- To play a DVD in extended mode, enable DirectDraw:
 1. Open Windows Start menu and select Run.
 2. Enter the following command: dxdiag
 3. Go to the Display tab and click the Enable button.

FCC Compliance and Advisory Statement

This device complies with Part 15 of the FCC rules. Operation is subject to the following two conditions: (1) this device may not cause harmful interference, and (2) this device must accept any interference received, including interference that may cause undesired operation.

This equipment has been tested and found to comply with the limits for a Class B digital device, according to Part 15 of the FCC rules. These limits are designed to provide reasonable protection against harmful interference in a residential installation. This equipment generates, uses and can radiate radio frequency energy and if not installed and used in accordance with the instructions, may cause harmful interference to radio communications. However, there is no guarantee that interference will not occur in a particular installation. If this equipment does cause harmful interference to radio or television reception, which can be determined by turning the equipment off and on, the user is encouraged to try correct the interference by one or more of the following measures:

1. Reorient the receiving antenna.
2. Increase the separation between the equipment and receiver.
3. Connect the equipment into an outlet on a circuit different from that to which the receiver is connected.
4. Consult the dealer or an experienced radio/TV technician for help.

Any special accessories needed for compliance must be specified in the instruction manual.

Warning: A shielded-type power cord is required in order to meet FCC emission limits and also to prevent interference to the nearby radio and television reception. It is essential that only the supplied power cord be used. Use only shielded cables to connect I/O devices to this equipment.

CAUTION: Any changes or modifications not expressly approved by the party responsible for compliance could void your authority to operate the equipment.

CE Statement

Hereby, *Addlogix, Inc.*, declares that this *InternetVue* is in compliance with the essential requirements and other relevant provisions of Directive 1999/5/EC.