

Rhein Tech Laboratories, Inc.
360 Herndon Parkway
Suite 1400
Herndon, VA 20170
<http://www.rheintech.com>

Client: Zylaya Corporation
Model: Z-Fob
Standards: FCC 15.247/IC RSS-210
FCC/IC ID: UVV-ZFOB/7070A-ZFOB
Report #: 2007173

Appendix I: Manual

Please refer to the following pages.



BATTERY INSTALLATION INSTRUCTIONS



BEFORE YOU INSTALL

Tools and equipment you will need:

- #1 Phillips screwdriver
- Replacement battery

Replacement batteries are available directly through Zylaya by calling Customer Service in the U.S. and Canada at 301-740-3825 or through your authorized Zylaya distributor or dealer. The user also has the option of replacing the battery with one of these approved Lithium Manganese Dioxide (Li/MnO₂) consumer grade replacement batteries:

Energizer Part No. CR2450
Panasonic Part No. CR2450
Sanyo Part No. CR2450

Note that the use of any other battery may void the unit warranty.

Locate an appropriate place to change the battery. The location should be clean and free of contaminants such as moisture, dirt and oil. Be sure to work in an Electro-Static Discharge (ESD) safe environment. If an ESD-safe work area is not available, be sure to touch the wall plate of a light switch or similar grounded structure to discharge excess static electricity before disassembling the unit.



Proper Electro-Static Discharge (ESD) handling precautions should be observed while disassembling and servicing the unit.

DO NOT disassemble the unit:

- In wet areas, or areas exposed to excessive humidity
- In extreme cold or warm areas, such as areas exposed to prolonged direct sunlight
- Around areas with significant amounts of airborne contaminants such as dust, dirt, or pollen
- In proximity to grease, oil, gasoline, solvents or similar volatile substances

DO disassemble the unit:

- In a dry, well lit, clean location
- In an area where small parts can not be easily lost
- On an ESD-safe work bench, if available



GENERAL INFORMATION

Federal Communications Commission and Industry Canada Compliance. This equipment has been tested and found to comply with the limits for a Class B digital device, pursuant to Part 15 of the FCC rules and with IC rules set in RSS-210. These limits are designed to provide reasonable protection against harmful interference in a residential installation. The equipment generates, uses, and can radiate radio frequency energy and, if not installed and used in accordance with the instructions, may cause harmful interference to radio communications.

However, there is no guarantee that interference will not occur in a particular installation. If this equipment does cause harmful interference to radio or television reception, which can be determined by turning the equipment off and on, the user is encouraged to try to correct the interference by one or more of the following measures:

- Reorient or relocate the radio or television receiving antenna.
- Increase the separation between the computer equipment and receiver.
- Connect the equipment to an outlet on a circuit different from that to which the radio or television receiver is connected.
- Consult the dealer or an experienced radio television technician for help.



Use of any other transmitting devices within 20cm (8 in) of this radio could void the user's authority to operate this equipment.



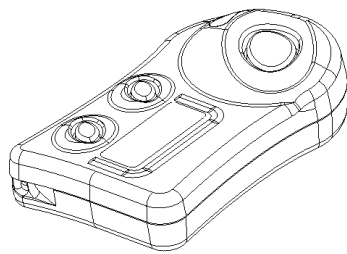
Changes or modifications not expressly approved by Zylaya could void the user's authority to operate this equipment.

This device complies with Part 15 of the FCC Rules. Operation is subject to the following two conditions: (1) this device may not cause harmful interference, and (2) this device must accept any interference received, including interference that may cause undesired operation.

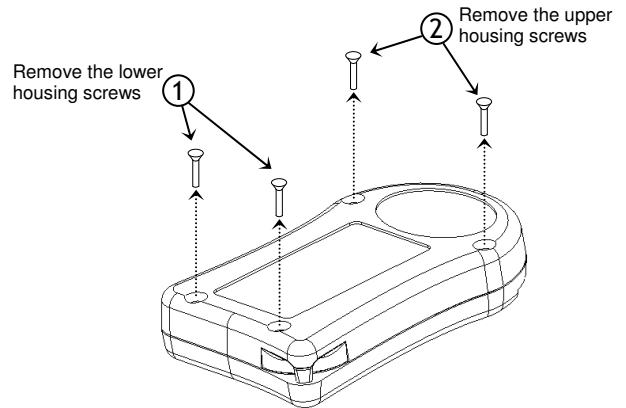
1

DISASSEMBLE THE UNIT

Locate and remove the four housing screws as shown. Keep the screws in a safe place as they will be needed for reassembly.



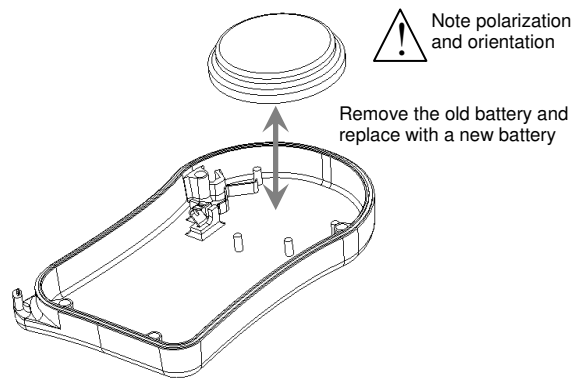
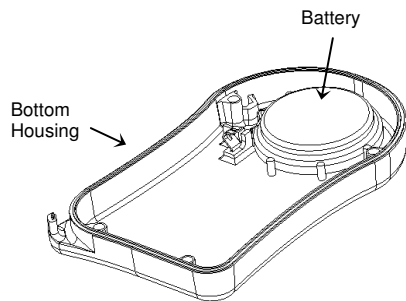
The screws are located on the bottom on the unit



2

REPLACE THE BATTERY

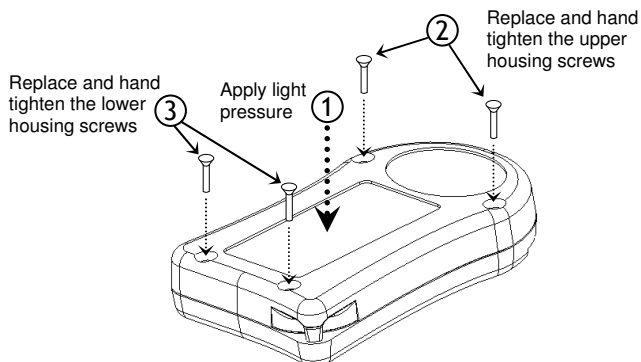
Pull the top and bottom halves apart, exposing the bottom housing. Remove and replace the battery as shown by lifting the battery from the housing. Note the orientation and polarization of the battery. The larger, flat positive (+) side must face downwards towards the plastic while the negative (-) side faces up towards the user.



3

REASSEMBLE THE UNIT

Once the battery is replaced, carefully align the top housing on top of the bottom housing. Apply light pressure to the unit to hold the top and bottom housings together while first inserting and tightening the upper housing screws and then the lower housing screws.



QUESTIONS OR CONCERNS?

Product Support is available by telephone between in the U.S. and Canada at 301-740-3825

Product Support Tip: Be prepared to provide the following information:

- Name, address, and telephone number
- The name of the Zylaya product
- Model and option (if applicable) of the Zylaya product
- Symptoms of the problem



Zylaya Z-Fob Battery Replacement Manual
P/N 0000589

Zylaya Corporation
444 North Frederick Avenue Suite 318
Gaithersburg, Maryland 20877

Visit us at www.zylaya.com

© 2007 Zylaya Corporation. All rights reserved