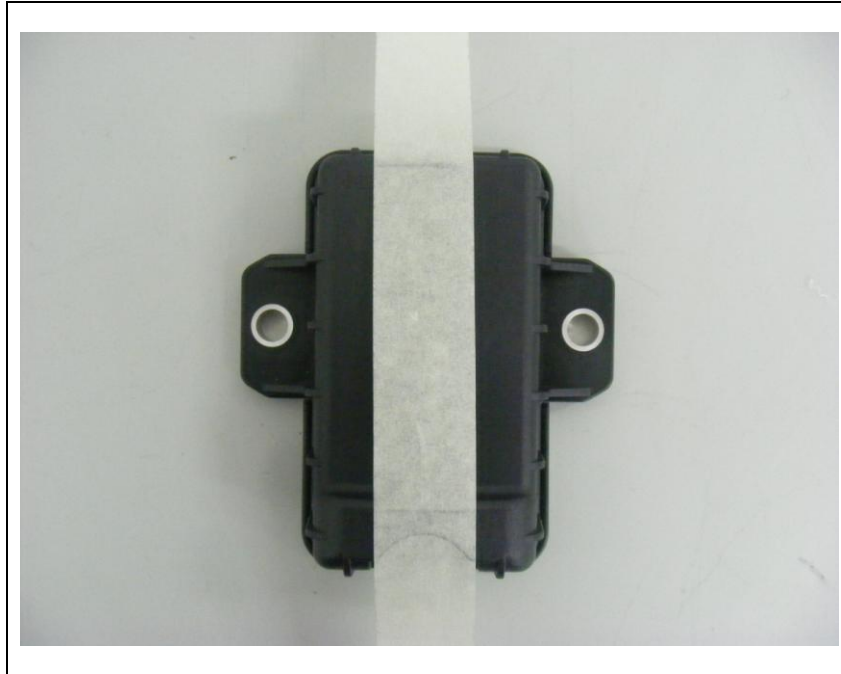


Test setup photo of EUT

A. Orthogonal planes of EUT

- The testing was set in the three orthogonal planes and measured for each position (X, Y, Z).

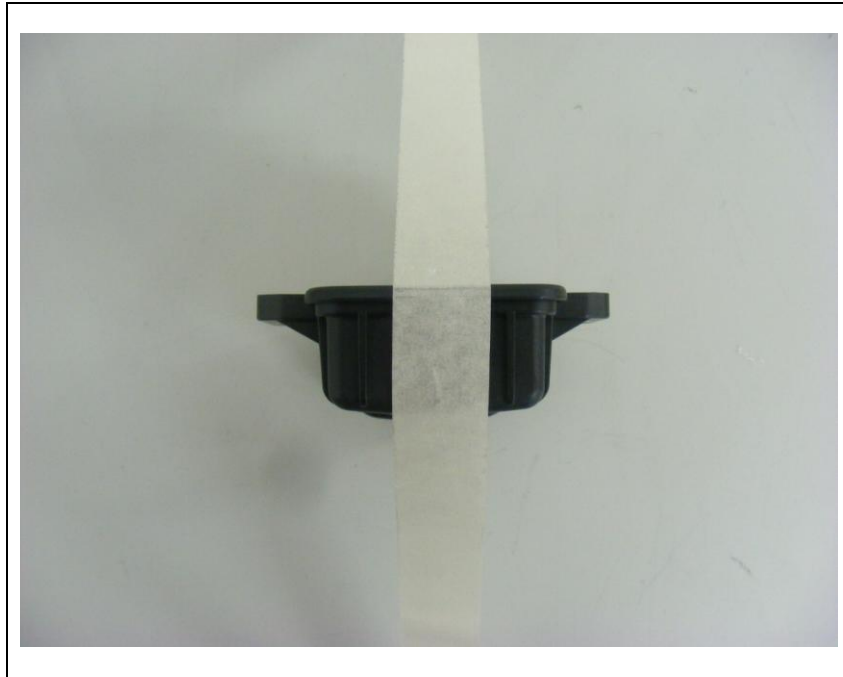
1. X- axis



2. Y-axis



3. Z-axis



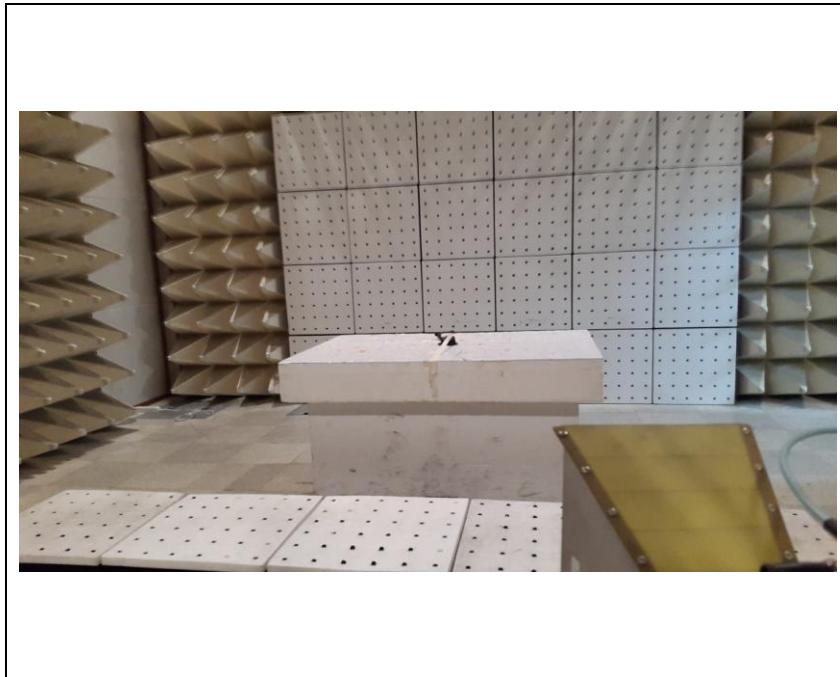
B. Photo of Test setup (9 kHz ~ 30 MHz)



C. Photo of Test setup (30 MHz ~ 1 GHz)



D. Photo of Test setup (above 1 GHz)



- DUT was tested in the Z-axis