

Project file Module M21: Visual Description

Title		2.1 Visual Description	
Responsible	Volker Biermann	creating system	MS-Word
Author	Volker Biermann	document type	doc
Filling	Design history file	KM-tool	tbd
filling name and path			
RCA-Products Sted\Non-medical devices\01_NE108-001_RFID_Module\NE108-001_RFID Module-up-date 2018 work in progress\FCC			

Released

Name	Volker Biermann	date	2018-11-14	signature	
------	-----------------	------	------------	-----------	--

1	Visual Description	2
2	Presentation of M21	2
3	Presentation of the integration of M21 in the System	4
3.1	Presentation of the integration of M21 in the system Evita Family	4
3.2	Presentation of the integration of M21 in the system Primus IE	4
3.3	Presentation of the integration of M21 in the system Perseus A500	5
3.4	Presentation of the integration of M21 in the system Atlan Family	5
4	Presentation of the Antennas (associated accessory)	6
4.1	Presentation of the Antennas (Evita Family)	6
4.2	Presentation of the Antennas (Primus IE)	8
4.3	Presentation of the Antennas (Perseus A500)	12
4.4	Presentation of the Antennas (Atlan Family)	17
5	Presentation of the Antennas connected with Module M21	22
5.1	Antennas Evita Family connected with the Module M21	22
5.2	Antennas Primus IE connected with the Module M21	22
5.3	Antennas Perseus A500 connected with Module M21	23
5.4	Antennas Atlan Family connected with Module M21	23

Project file Module M21: Visual Description

1 Visual Description

This description shows the module M21.

Module M21 part number : MP02001

Module M21.2 part number : MP02101

2 Presentation of M21

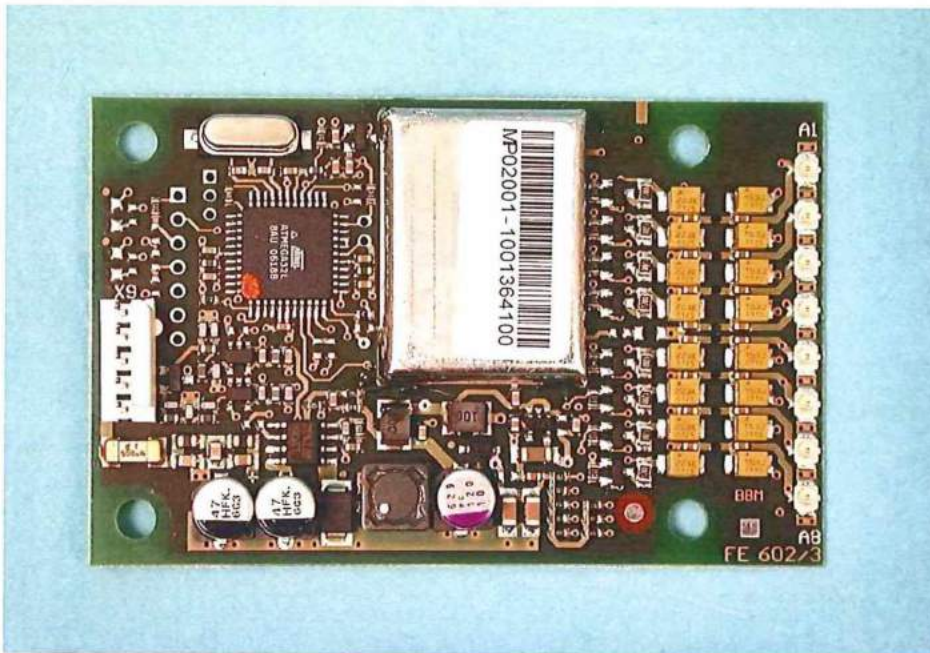


Figure 01: Module M21, front view

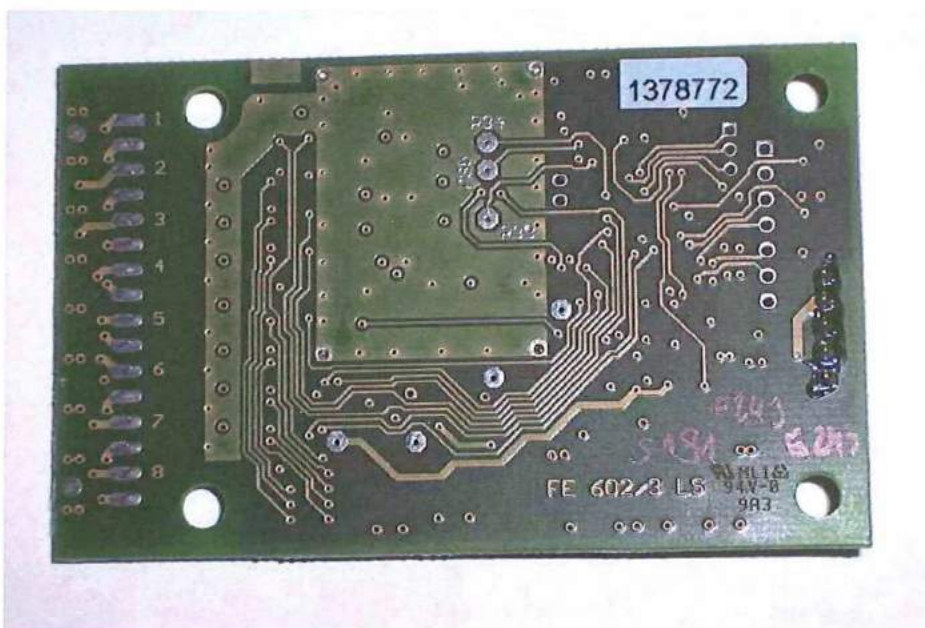


Figure 02: Module M21, back view

Project file Module M21: Visual Description

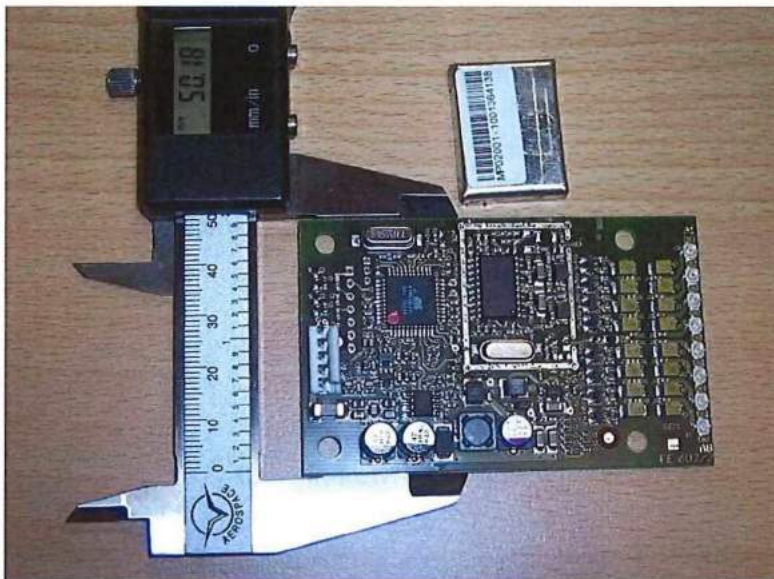


Figure 03: Module M21, shielding demounted, front view

Project file Module M21: Visual Description

3 Presentation of the integration of M21 in the System

3.1 Presentation of the integration of M21 in the system Evita Family

Evita Family consists of V500 / VN 500 / V300



Figure 04: Module M21 in application environment Evita Family

3.2 Presentation of the integration of M21 in the system Primus IE



Figure 05: Module M21 in application environment Primus IE

Project file Module M21: Visual Description

3.3 Presentation of the integration of M21 in the system Perseus A500

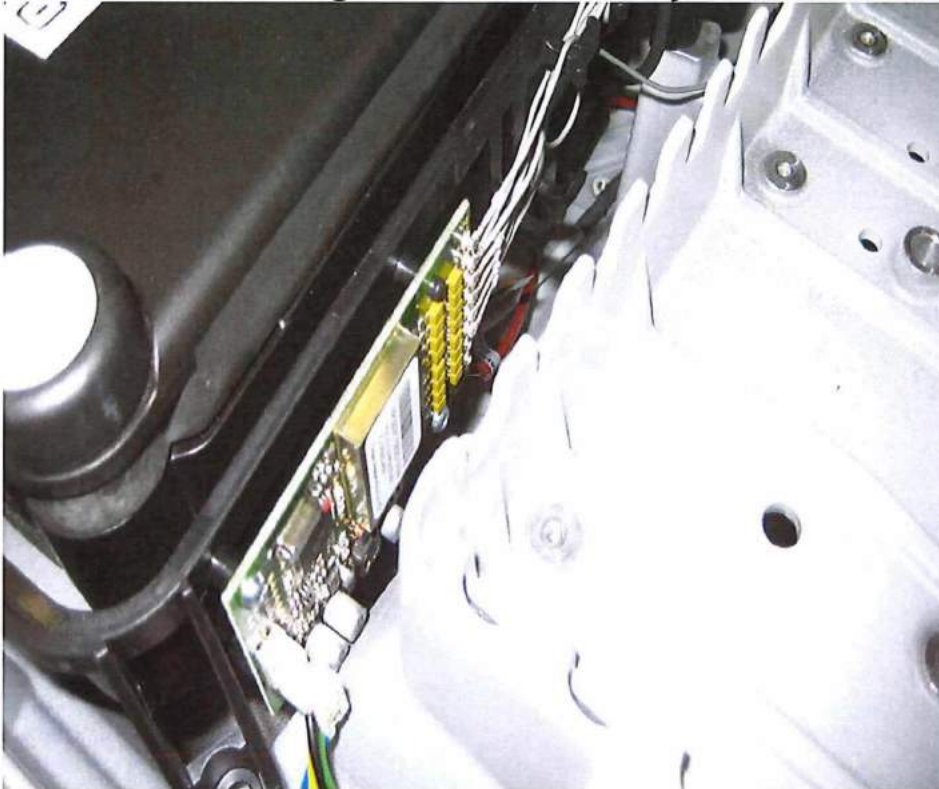


Figure 06: Module M21 in application environment Perseus A500

3.4 Presentation of the integration of M21 in the system Atlan Family Atlan Family consists of A300 / A300 XL / A350 / A350 XL

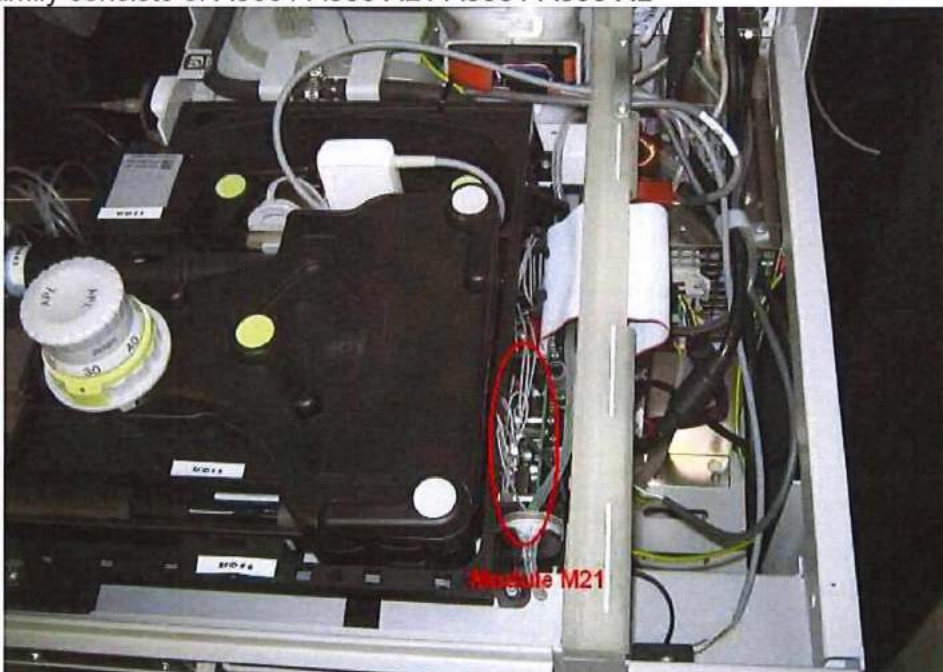


Figure 07: Module M21 in application environment Atlan

4 Presentation of the Antennas (associated accessory)

4.1 Presentation of the Antennas (Evita Family)

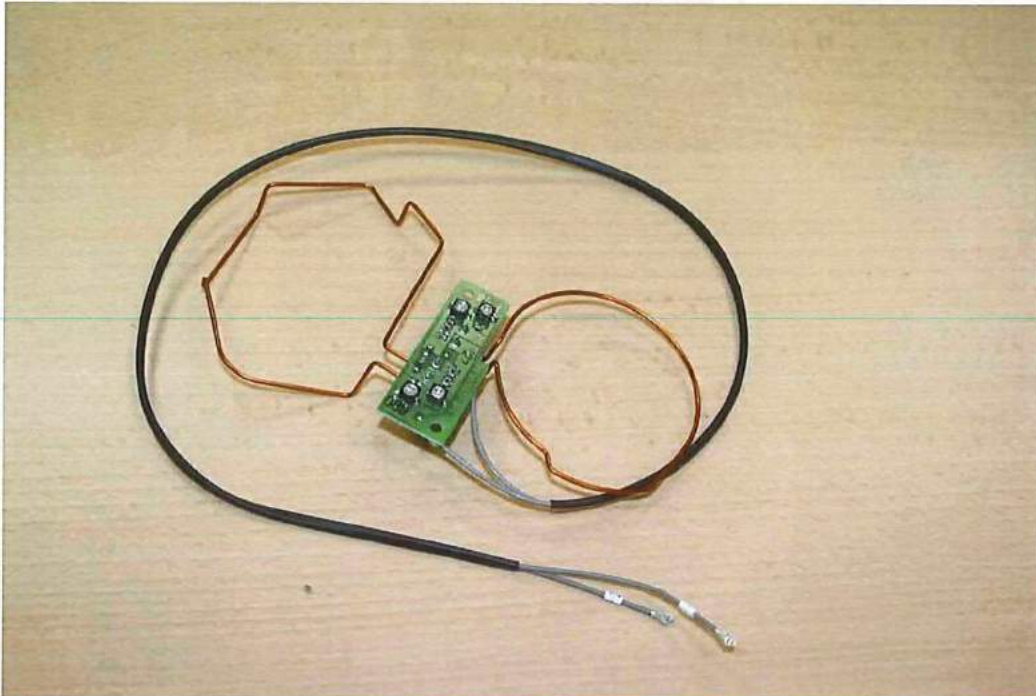


Figure 08: Insp. Exp. Antenna, MP02021 (Dimension appr. 80mm x 70mm each)

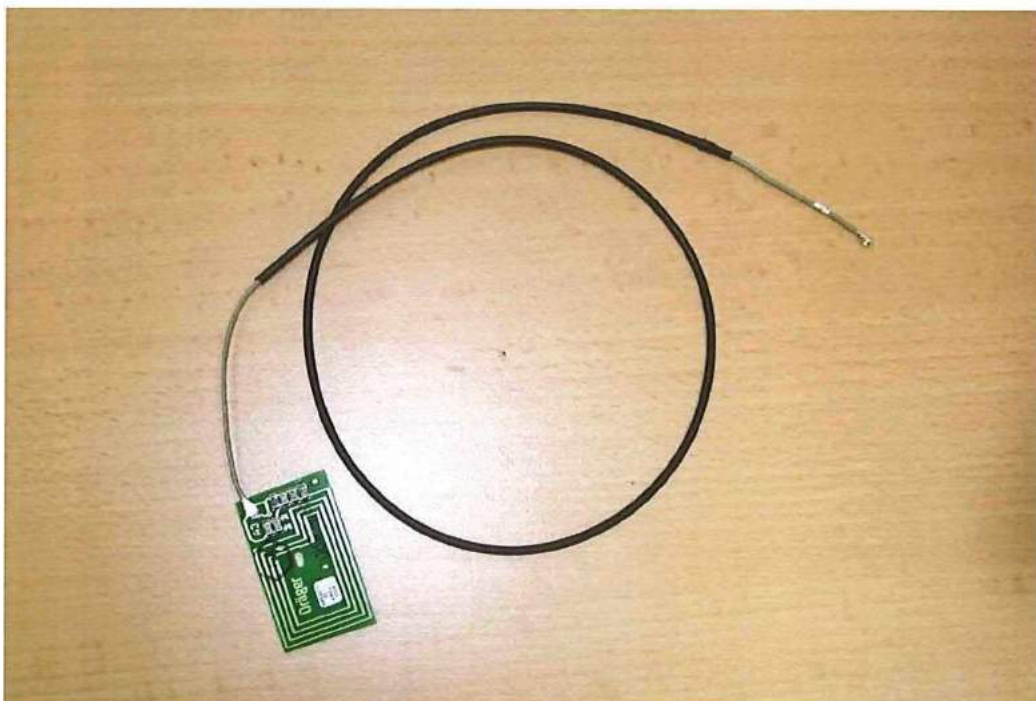


Figure 09: Spirolog antenna MP02011(Dimension appr. 40mm x 25mm)

Project file Module M21: Visual Description

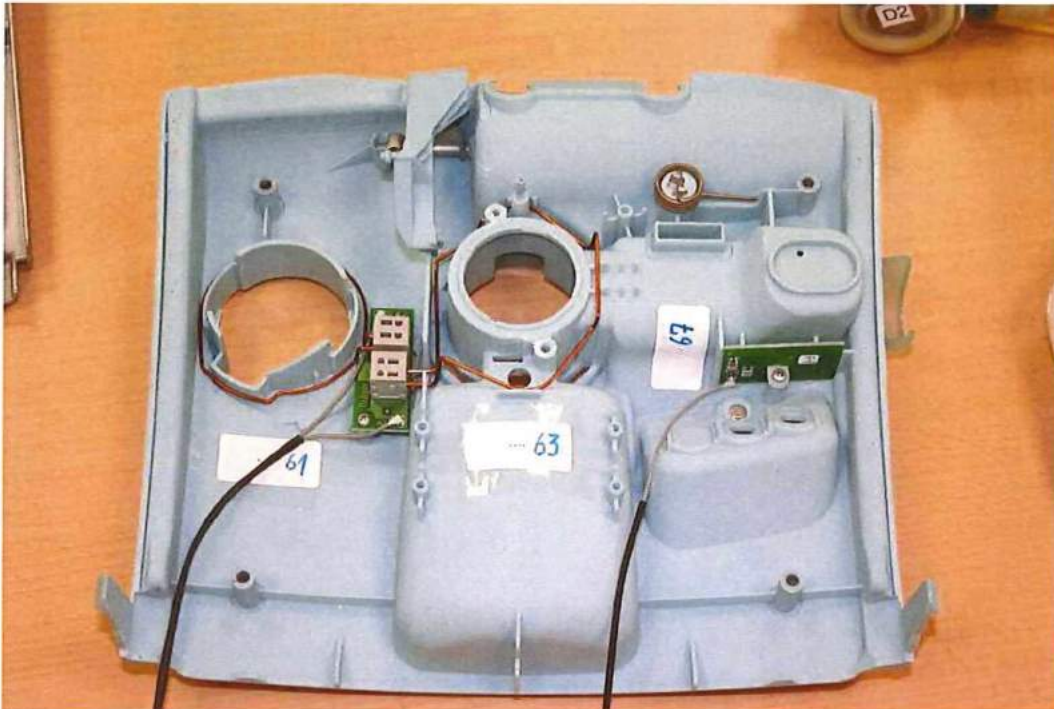


Figure 10: The Inspiration- (Pos.61), Expiration- (Pos. 63) and the Spirolog- (Pos. 67) antennas application environment

Project file Module M21: Visual Description

4.2 Presentation of the Antennas (Primus IE)

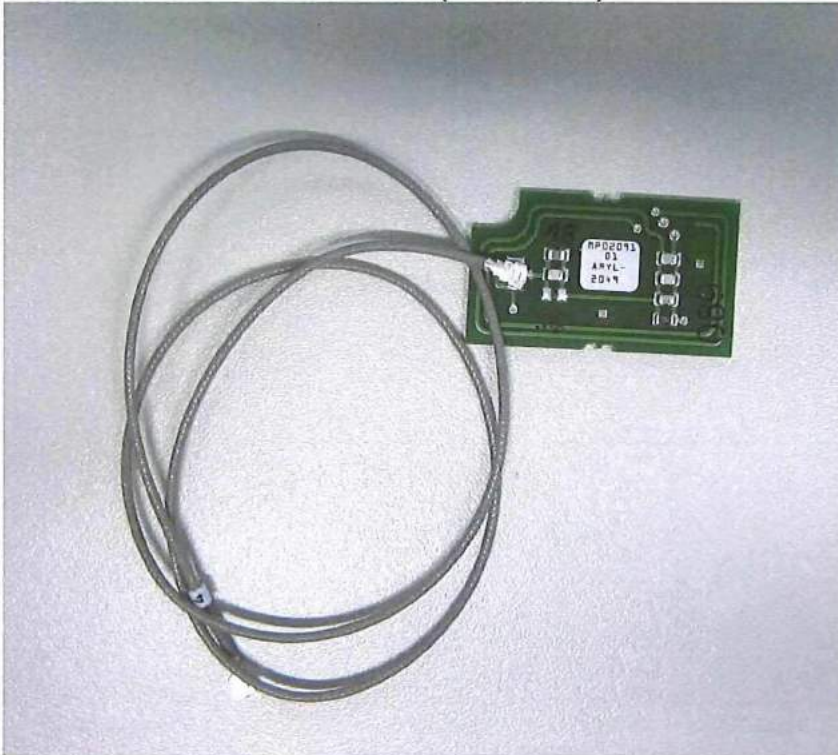


Figure 11: Antenna WAL, MP02091

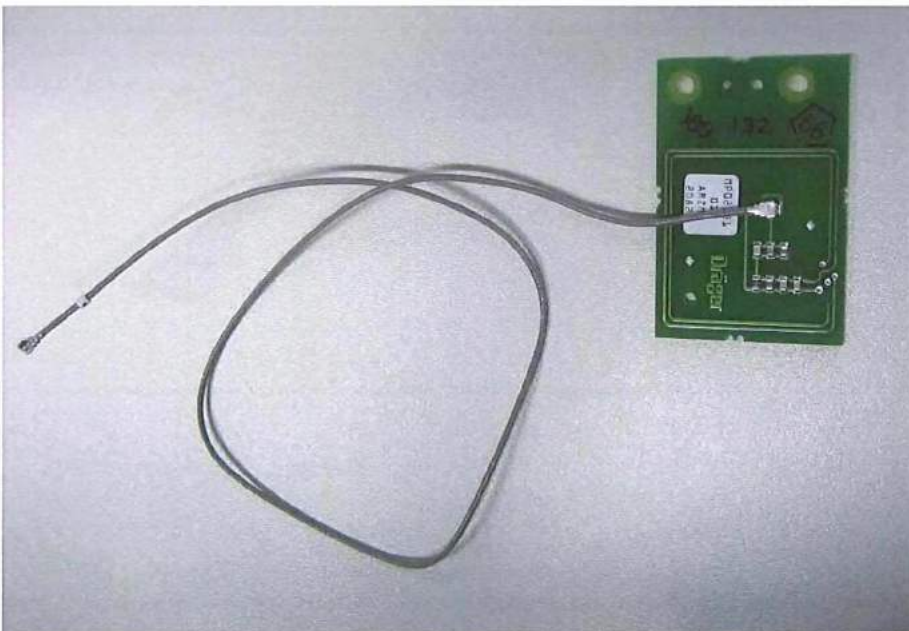


Figure 12: Antenna CO2, MP02131

Project file Module M21: Visual Description

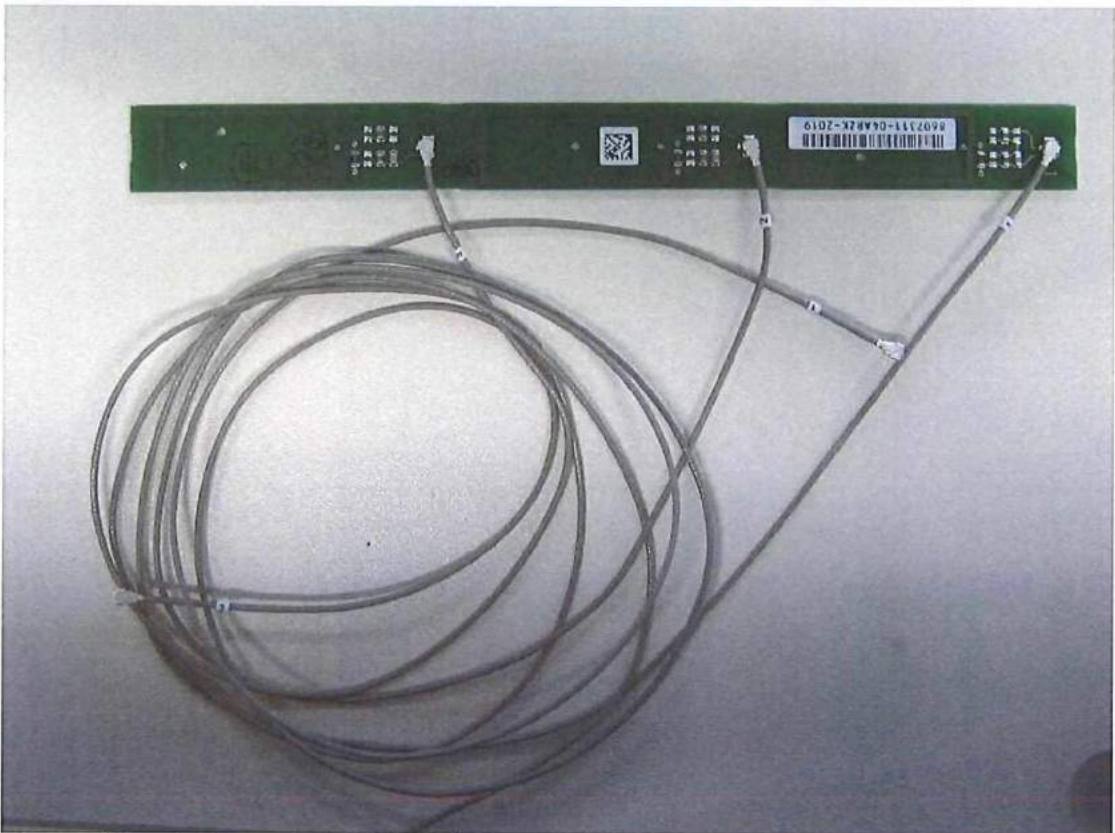


Figure 13: Antenna Set, 8607311

Project file Module M21: Visual Description

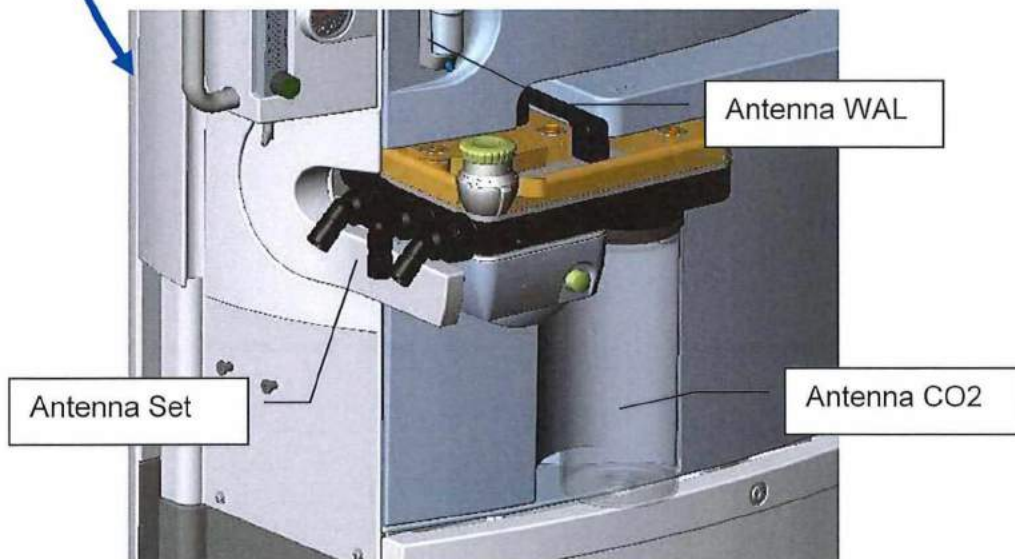


Figure 14: Placement of Antennas in Primus IE

Project file Module M21: Visual Description

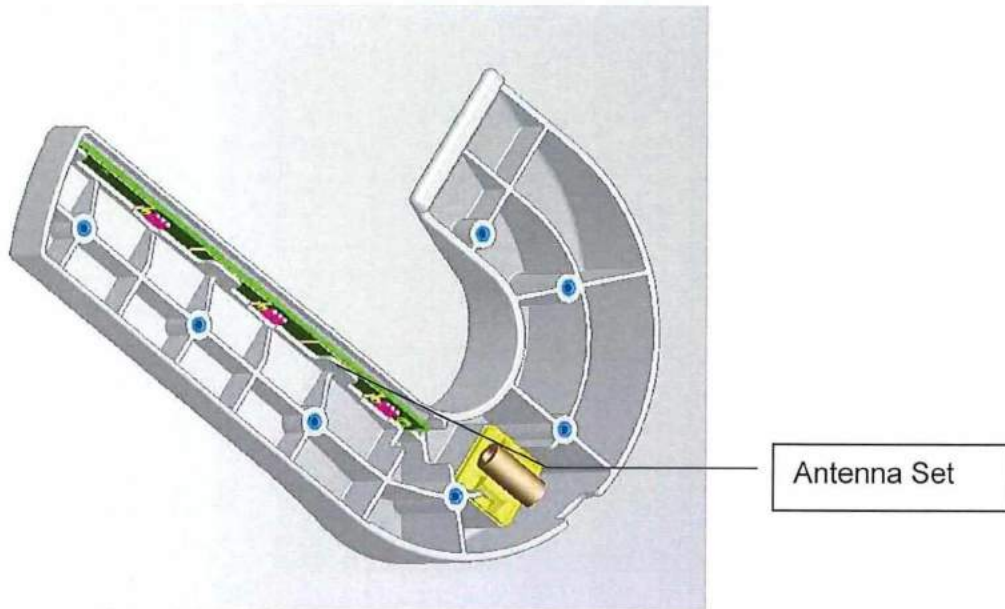


Figure 15: Placement of the Antenna Set

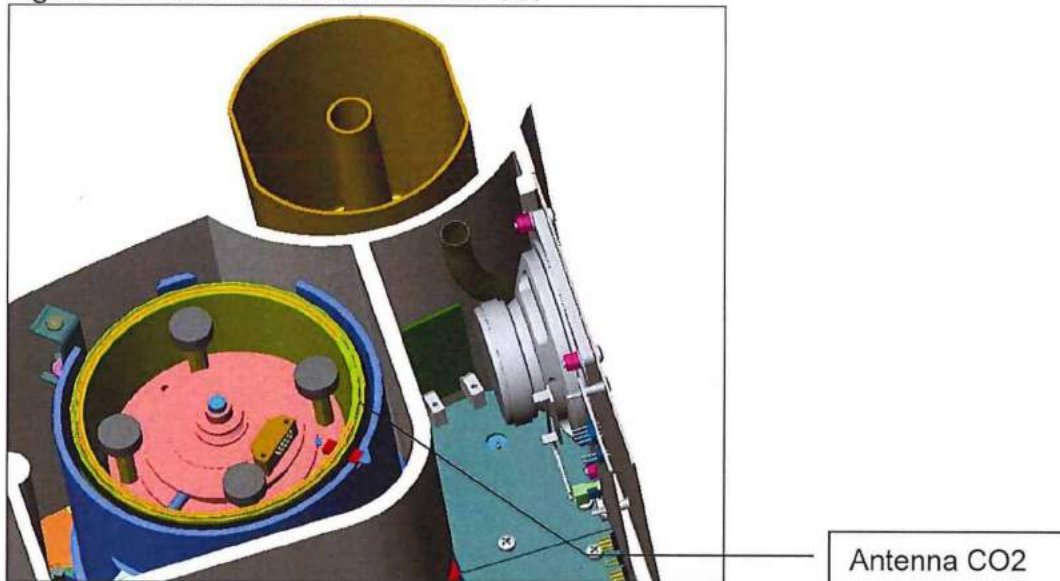


Figure 16: Placement of the Antenna CO2

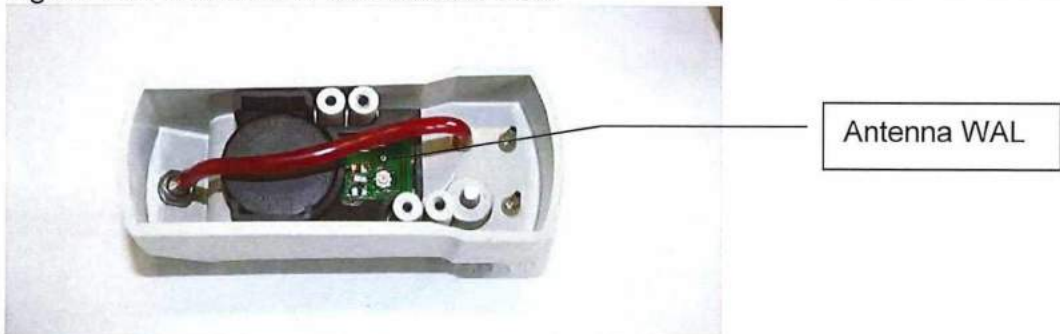


Figure 17: Placement of the Antenna WAL

Project file Module M21: Visual Description

4.3 Presentation of the Antennas (Perseus A500)



Figure 18: Antenna WAL, MK07891



Figure 19: Antenna CO2, MK07491



Figure 20: Antenna Flow In, MK07486

Project file Module M21: Visual Description

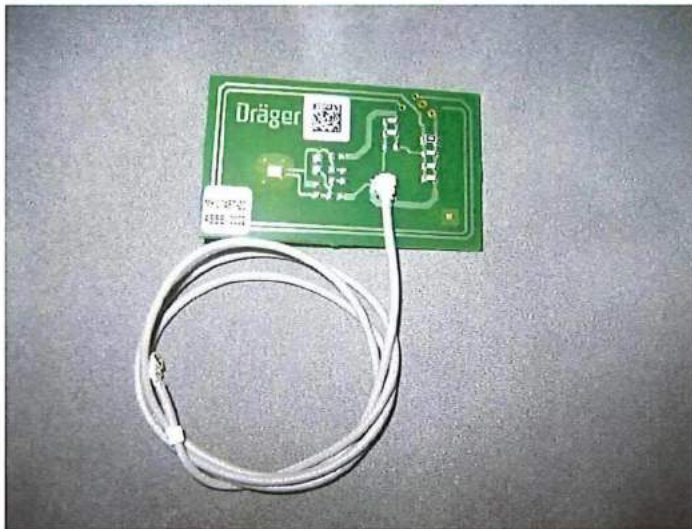


Figure 21: Antenna Flow Ex, MK07487



Figure 22: Antenna Breath In, MK07476



Figure 23: Antenna Breath Ex, MK07477

Project file Module M21: Visual Description

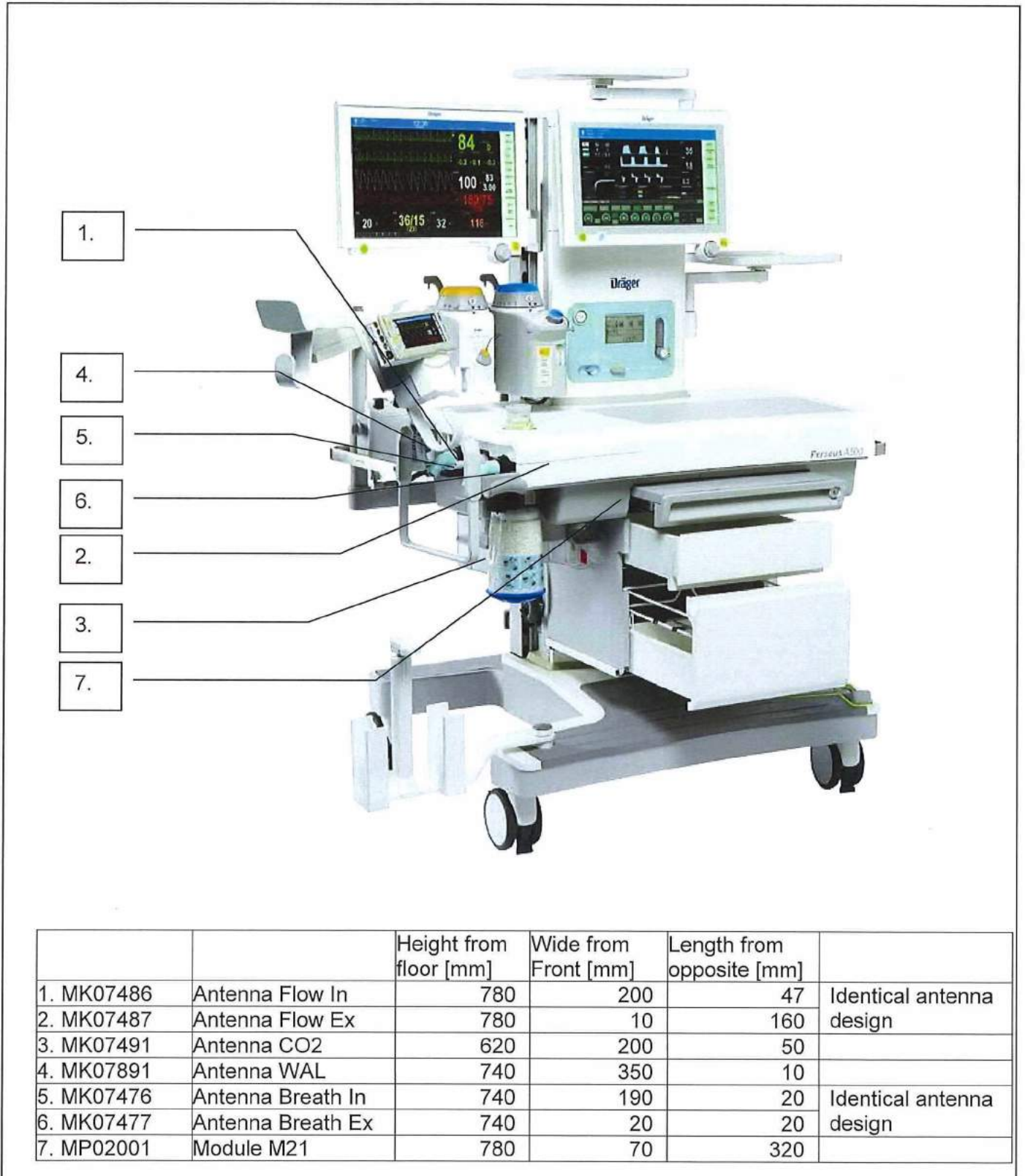


Figure 24: General Placement of Antennas in Perseus A500

Project file Module M21: Visual Description



Figure 25: Placement of Antenna WAL, MK07891 in Perseus A500

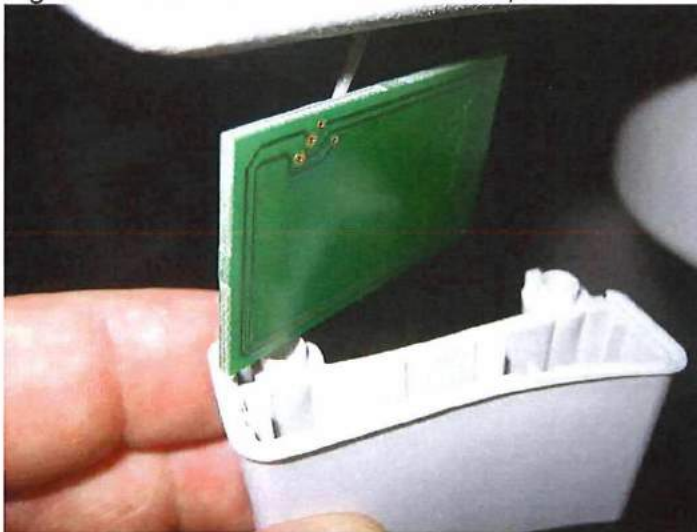


Figure 26: Placement of Antenna CO2, MK07491 in Perseus A500



Figure 27: Placement of Antenna Flow In, MK07486, in Perseus A500

Project file Module M21: Visual Description



Figure 28: Placement of Antenna Flow Ex, MK07487, in Perseus A500



Figure 29: Placement of Antenna Breath In, MK07476 in Perseus A500

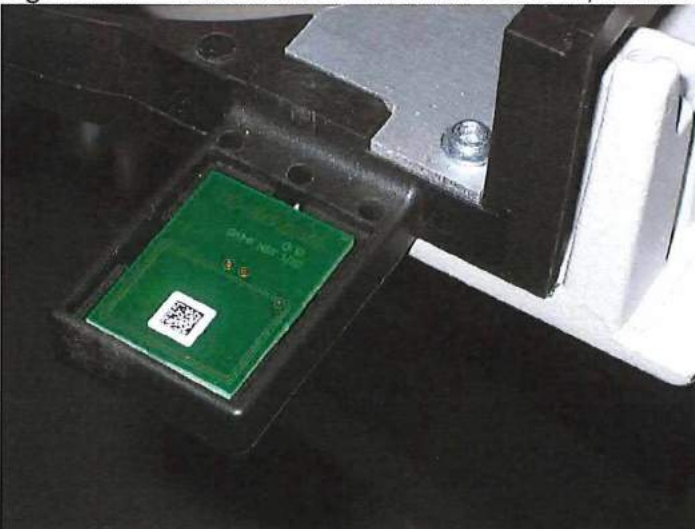


Figure 30: Placement of Antenna Breath Ex, MK07477 in Perseus A500

Project file Module M21: Visual Description

4.4 Presentation of the Antennas (Atlan Family)

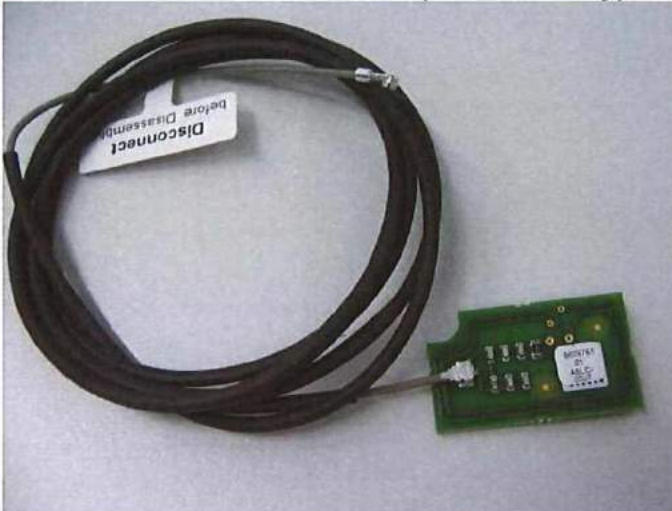


Figure 31: Antenna WAL 8609761

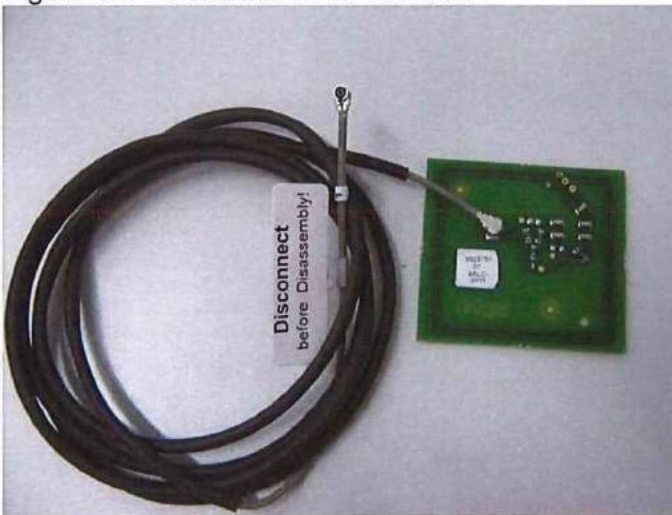


Figure 32: Antenna CO2 8609751

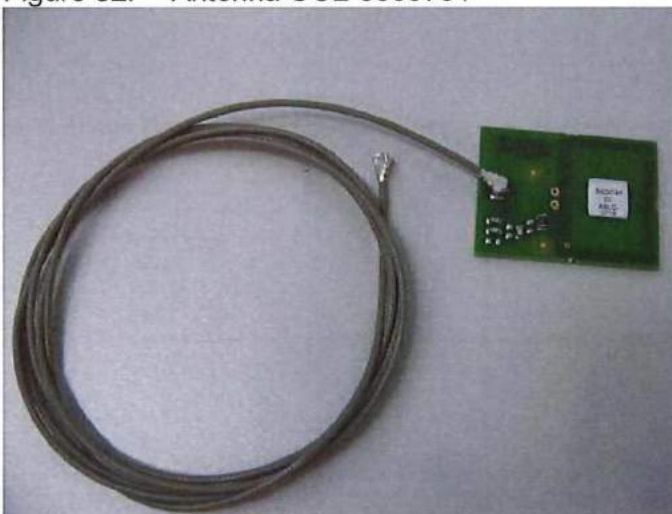


Figure 33: Antenna Breath Insp 8609741

Project file Module M21: Visual Description

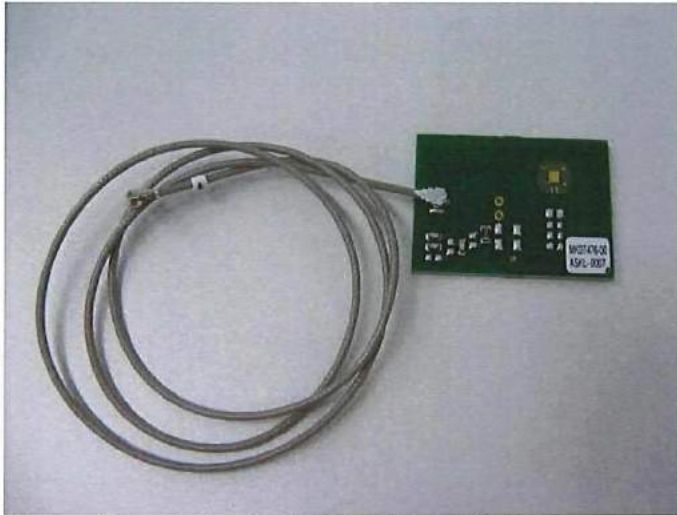


Figure 34: Antenna Breath Exp MK07476



Figure 35: Antenna Flow Insp 8609721

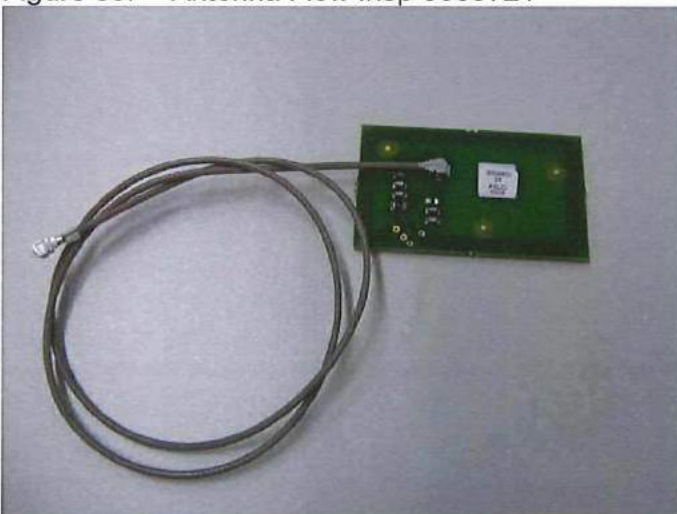


Figure 36: Antenna Flow Exp 8609931

Project file Module M21: Visual Description

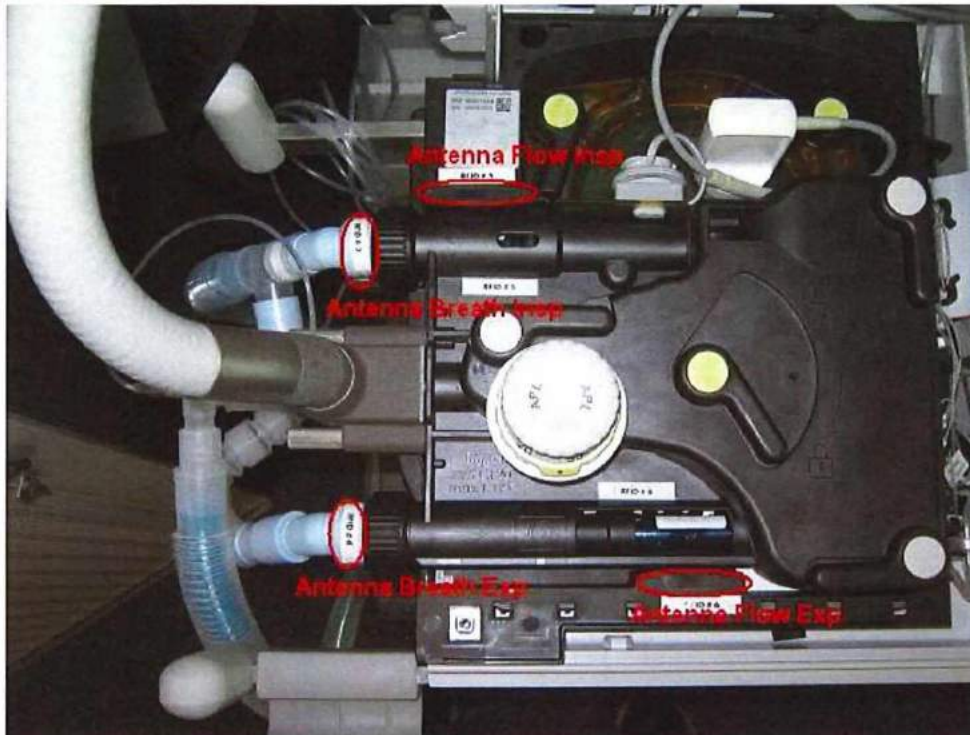


Figure 37: General Placement of Antennas in Atlan 1

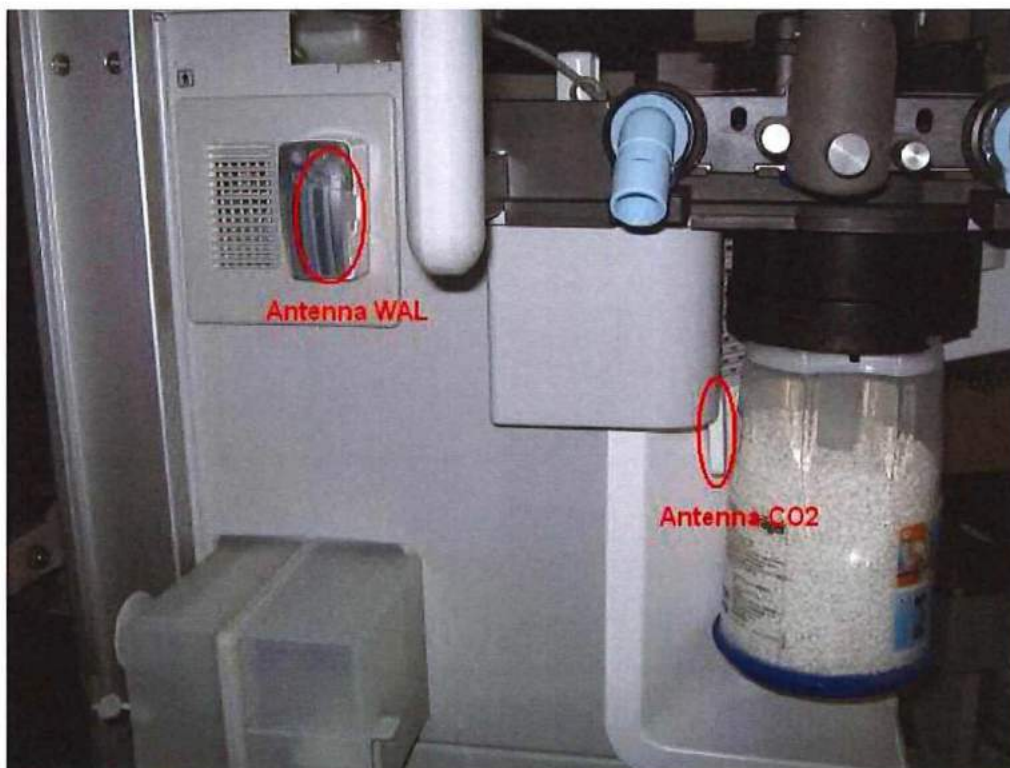


Figure 38: General Placement of Antennas in Atlan 2

Project file Module M21: Visual Description



Figure 39: Placement of Antenna WAL 8609761

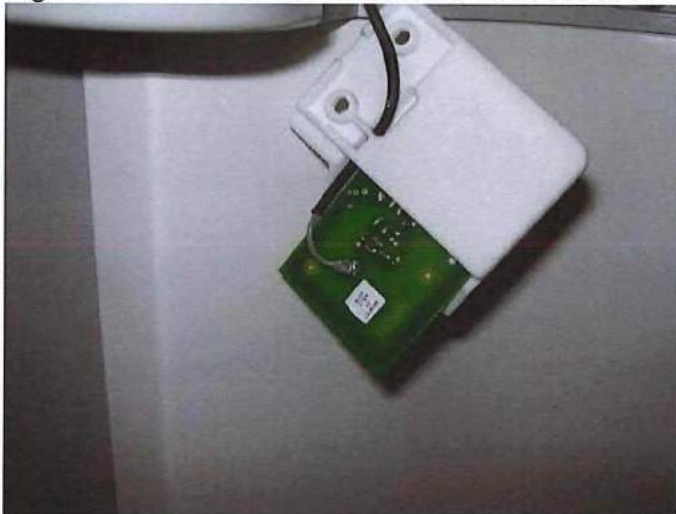


Figure 40: Placement of Antenna CO2 8609751



Figure 41: Placement of Antenna Breath Insp 8609741

Project file Module M21: Visual Description



Figure 42: Placement of Antenna Breath Exp MK07476



Figure 43: Placement of Antenna Flow Insp 8609721



Figure 44: Placement of Antenna Flow Exp 8609931

Project file Module M21: Visual Description

5 Presentation of the Antennas connected with Module M21

5.1 Antennas Evita Family connected with the Module M21

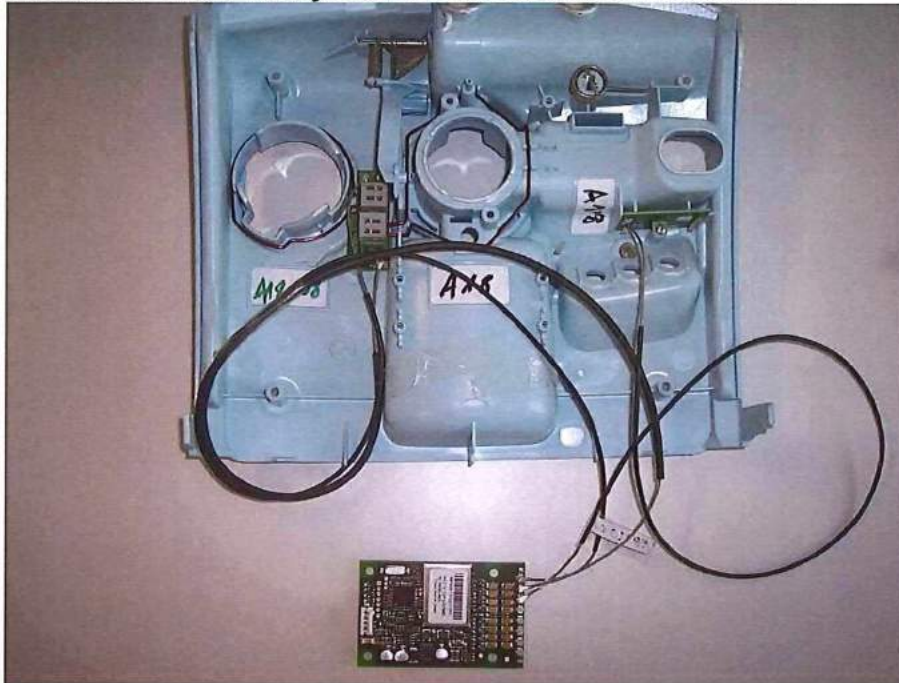


Figure 45: Spirolog antenna MP02011 and Insp. Exp. Antenna, MP02021

5.2 Antennas Primus IE connected with the Module M21

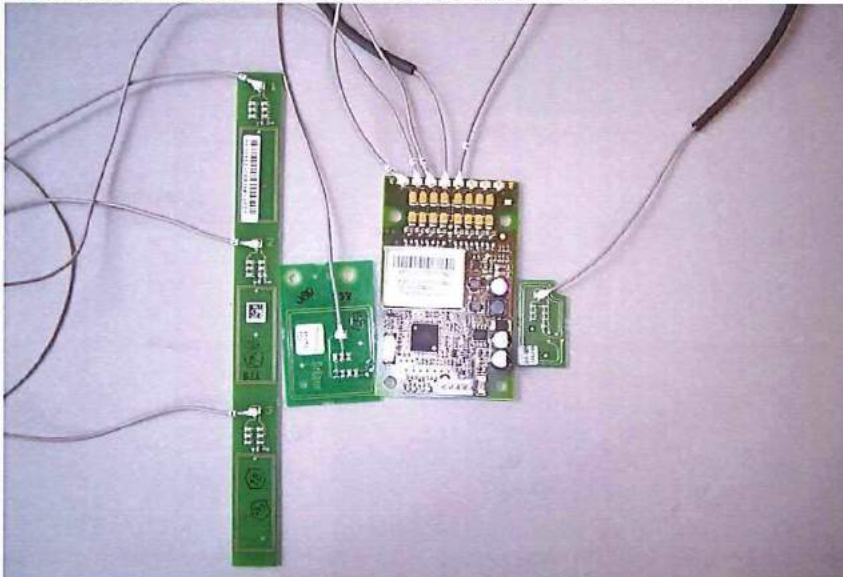


Figure 46: Antenna WAL, MP02091, Antenna CO2, MP02131 and Antenna Set, 8607311

Project file Module M21: Visual Description

5.3 Antennas Perseus A500 connected with Module M21

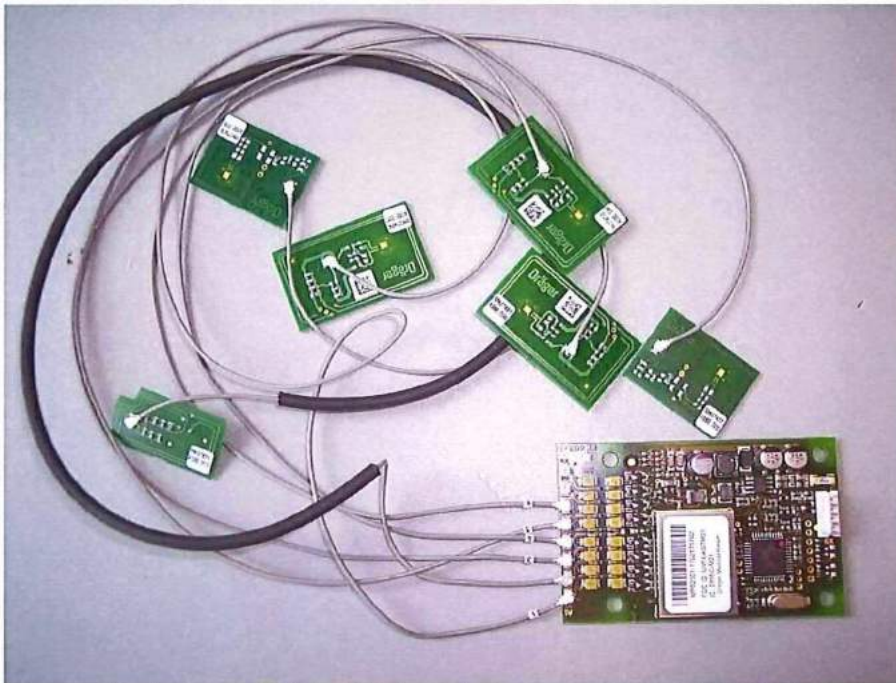


Figure 47: Antenna WAL, MK07891, Antenna CO2, MK07491, Antenna Flow In, MK07486, Antenna Flow Ex, MK07487, Antenna Breath In, MK07476 and Antenna Breath Ex, MK07477

5.4 Antennas Atlan Family connected with Module M21

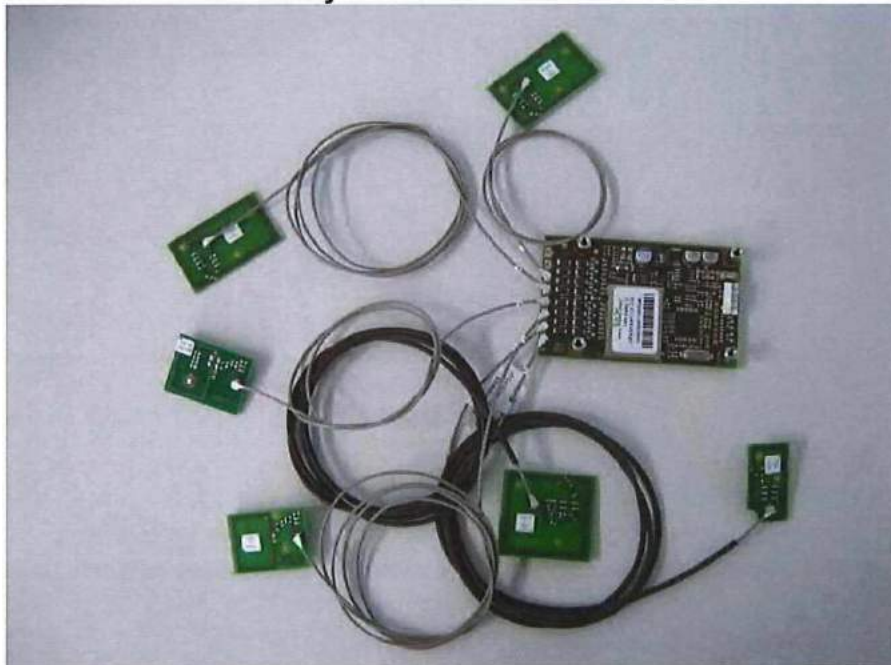


Figure 48: Antenna WAL 8609761, Antenna CO2 8609751, Antenna Breath Insp 8609741, Antenna Breath Exp MK07476, Antenna Flow Insp 8609721 and Antenna Flow Exp 8609931

