

Viareggio November 29th, 2019

Attn: Reviewing Engineer
Federal Communications Commission
7435 Oakland Mills Road
Columbia, MD 21046

Object: Internal photos of R4320P PROTON – Long range RAIN RFID reader
FCC ID: UVECAENRFID028

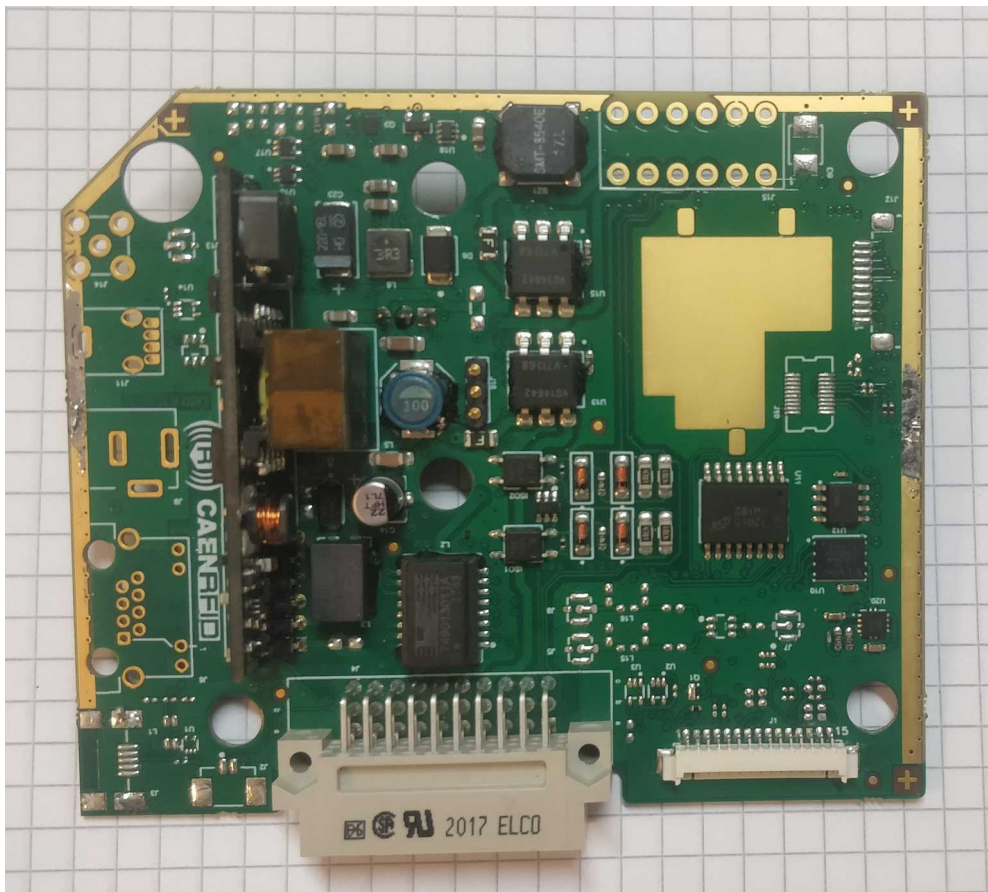


Fig. 1: Main board – Top side

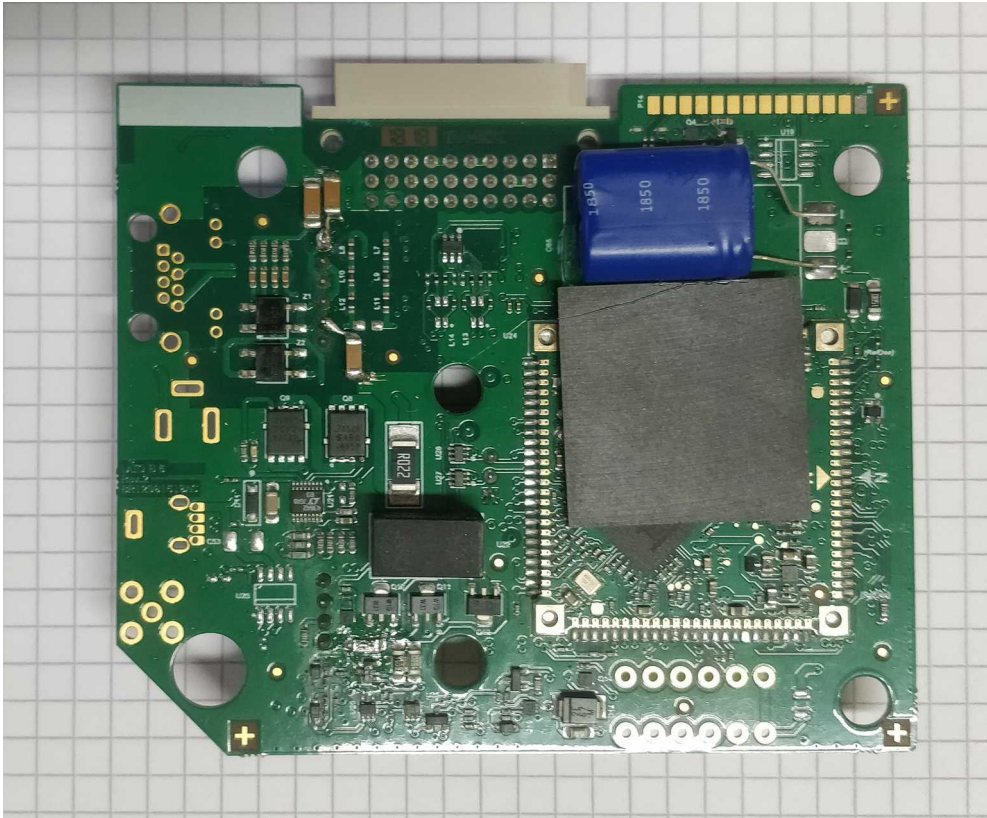


Fig. 2: Main Board - Bottom side

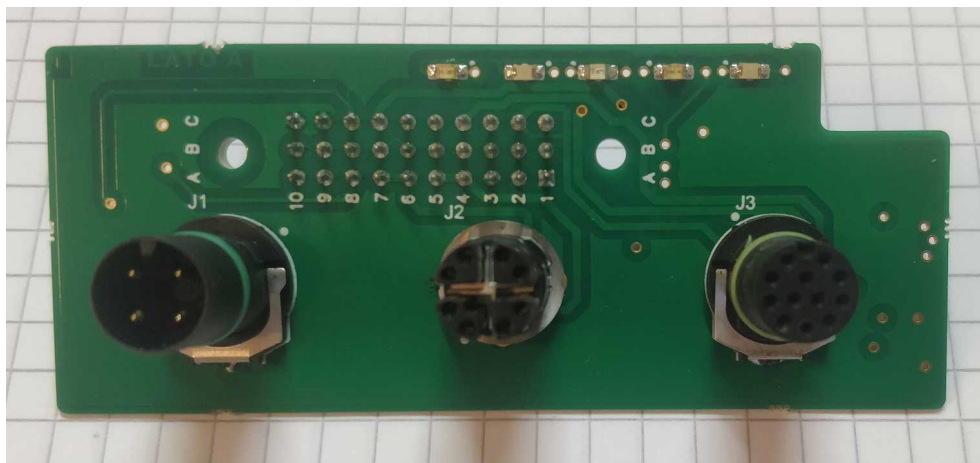


Fig. 3: Interface Board - Top side

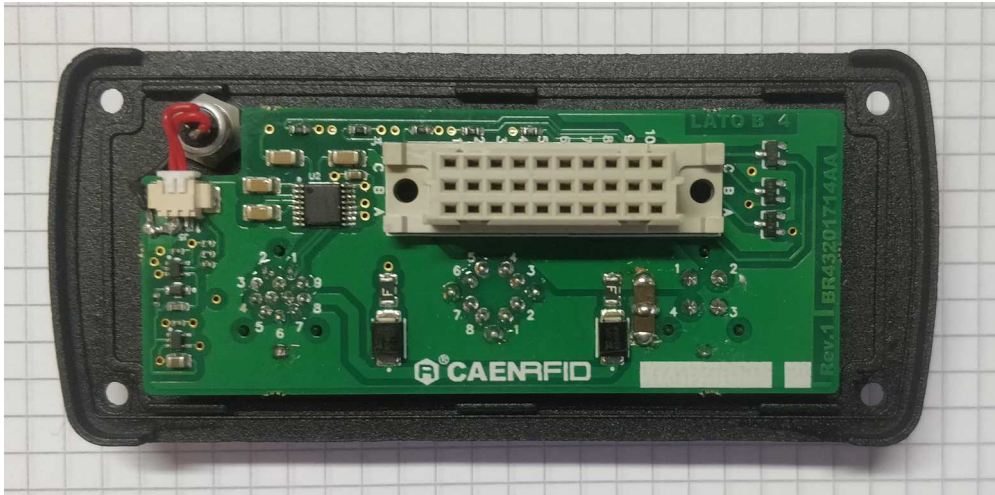


Fig. 4: Interface Board - Bottom side



Fig. 5: Front Panel – Internal view



Fig. 6: Rear Panel – Internal view

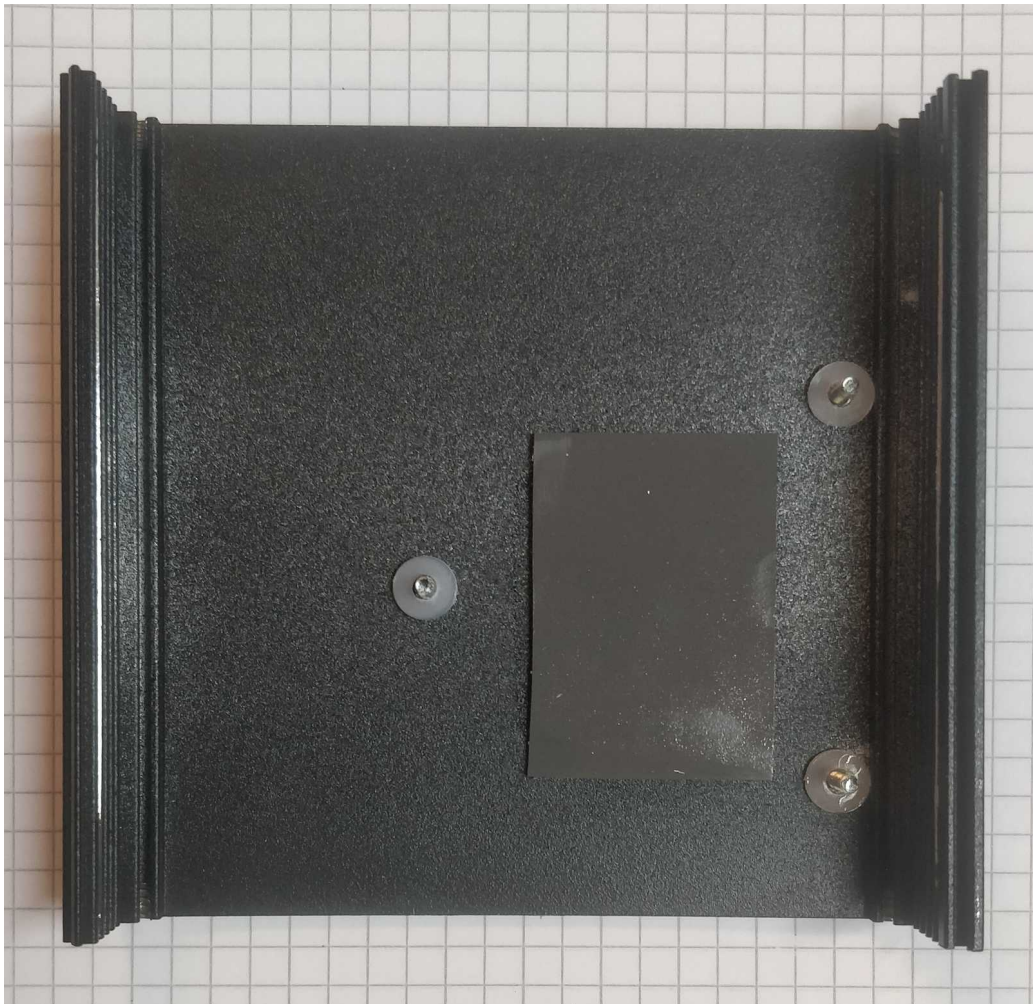


Fig. 7: Bottom Enclosure - Internal view

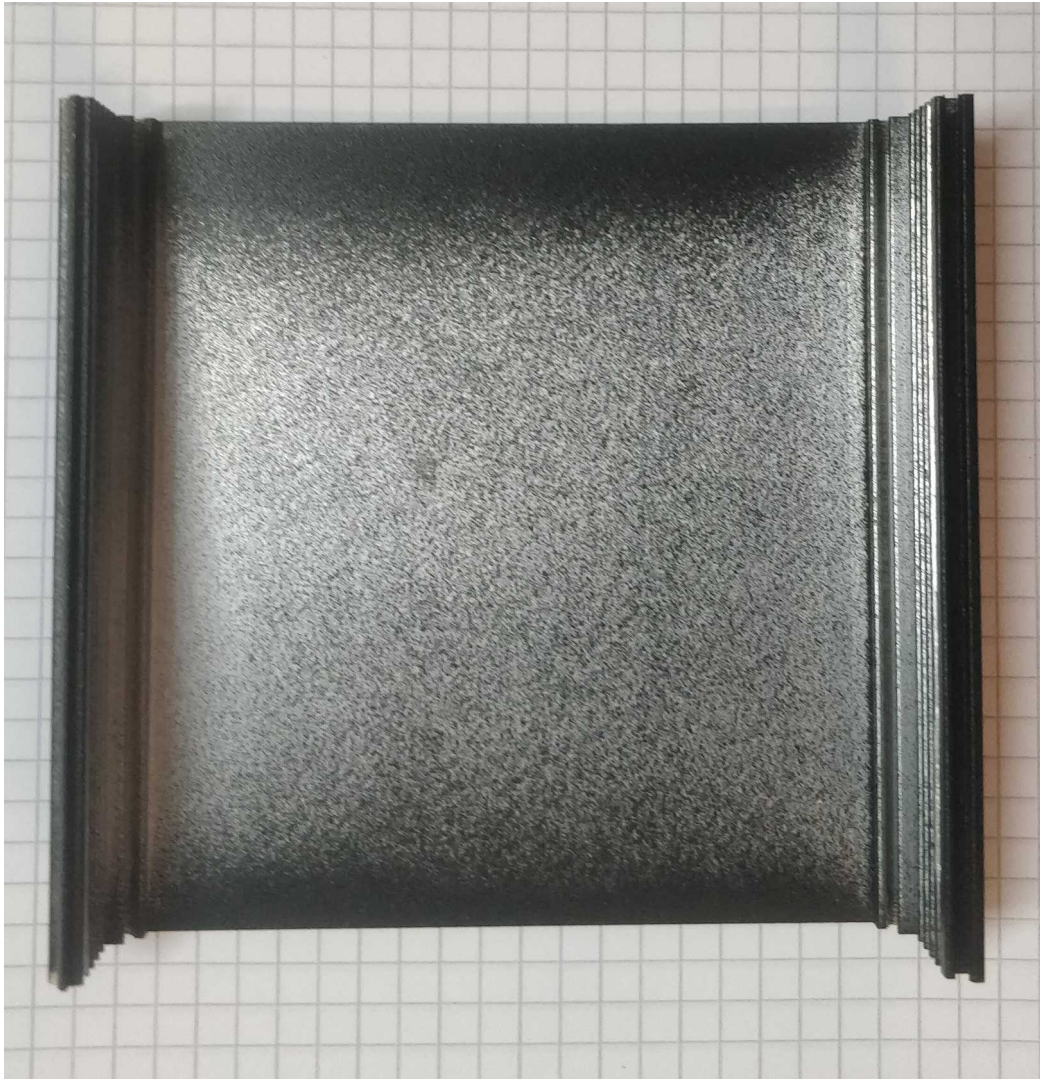


Fig. 8: Top Enclosure - Internal view



Fig. 9: RFID module installation

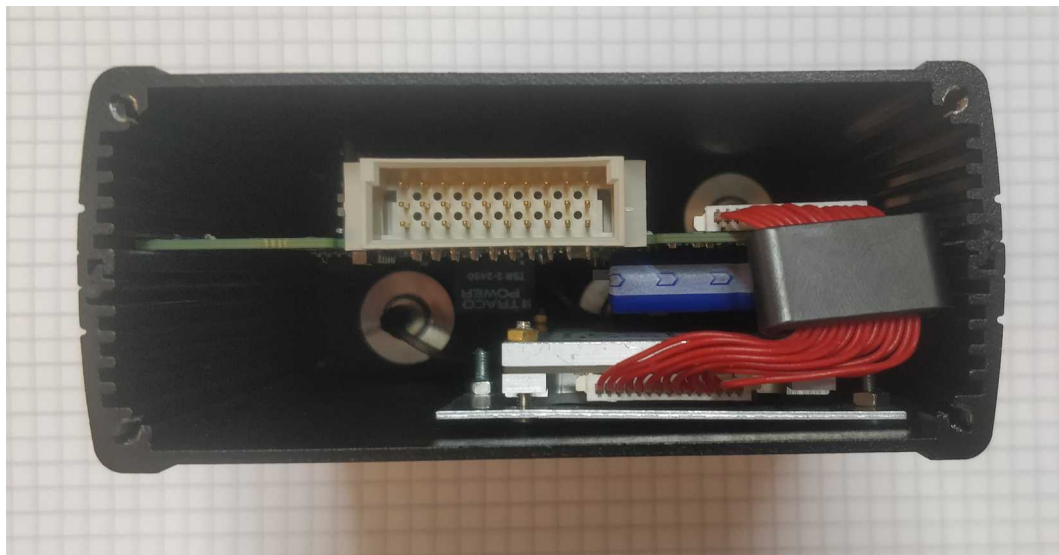


Fig. 10: RFID module connection to main board



Fig. 11: RFID Module – Internal view - Top side

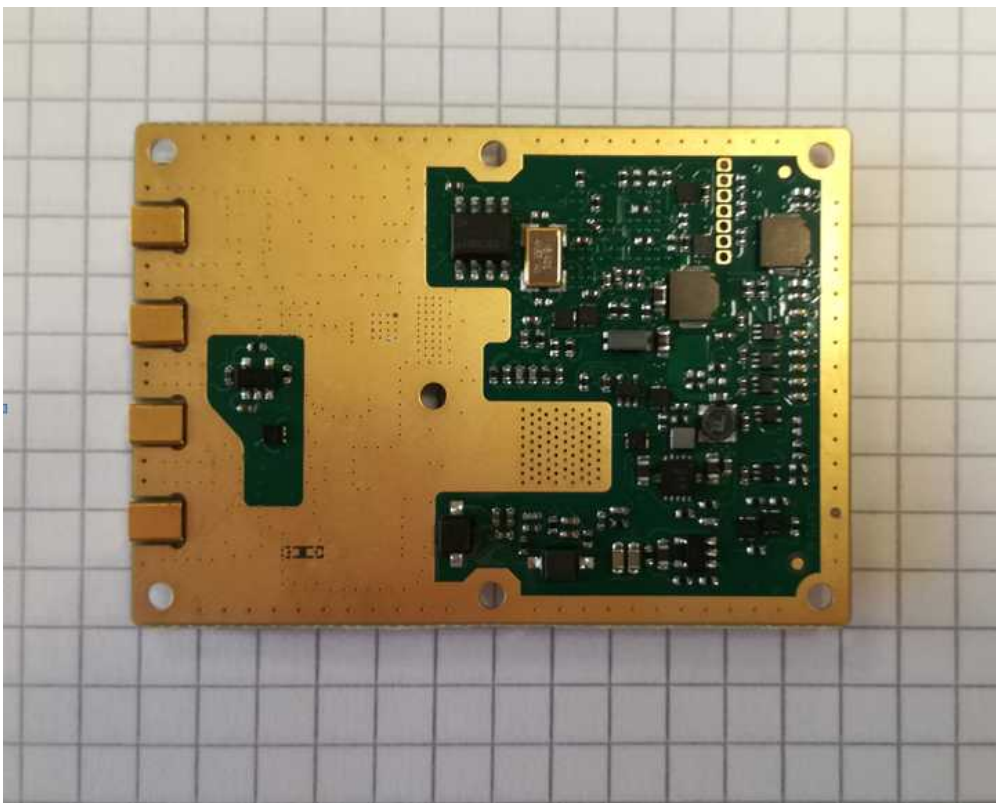


Fig. 12: RFID Module – Internal view - Bottom side



Fig. 13: RFID Module – External view - Top side



Fig. 14: RFID Module – External view - Bottom side

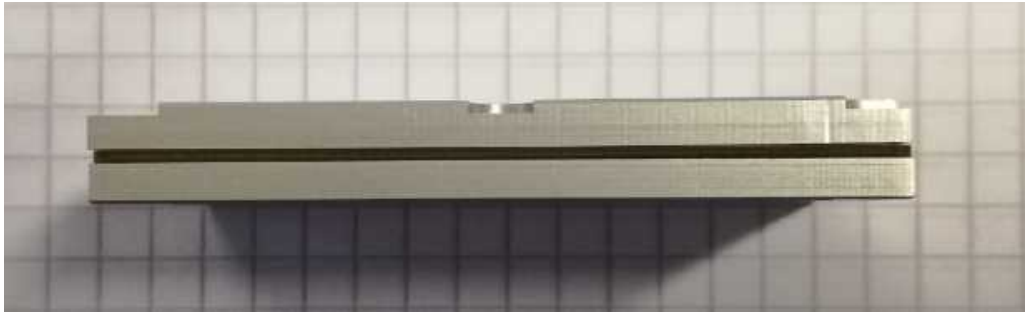


Fig. 15: RFID Module – External view – Left side

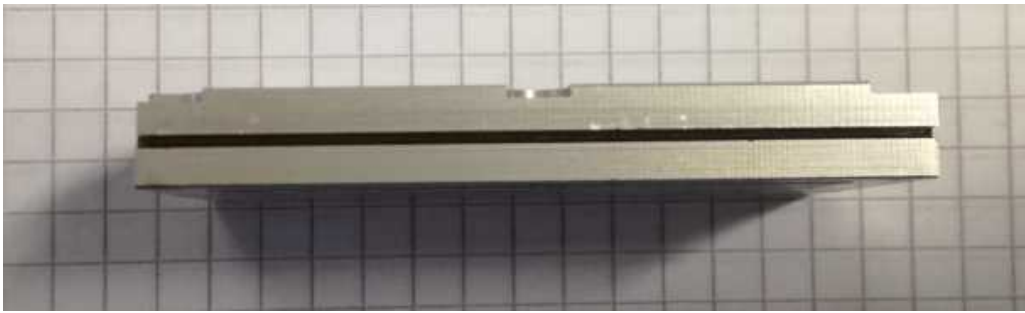


Fig. 16: RFID Module – External view – Right side



Fig. 17: RFID Module – External view – Front side



Fig. 18: RFID Module – External view – Rear side