

Viareggio May 6th, 2015

Object: Internal photos of R1250IU - Tile - Compact UHF RFID Desktop Reader (FCC) ,
R1250IUFL - Tile - Flanged - Compact UHF RFID Desktop Reader (FCC) ,
R1250IUB - Tile - Black - Compact UHF RFID Desktop Reader (FCC),
R1250IUBFL - Tile - Black Flanged - Compact UHF RFID Desktop Reader (FCC)

FCC ID: UVECAENRFID019

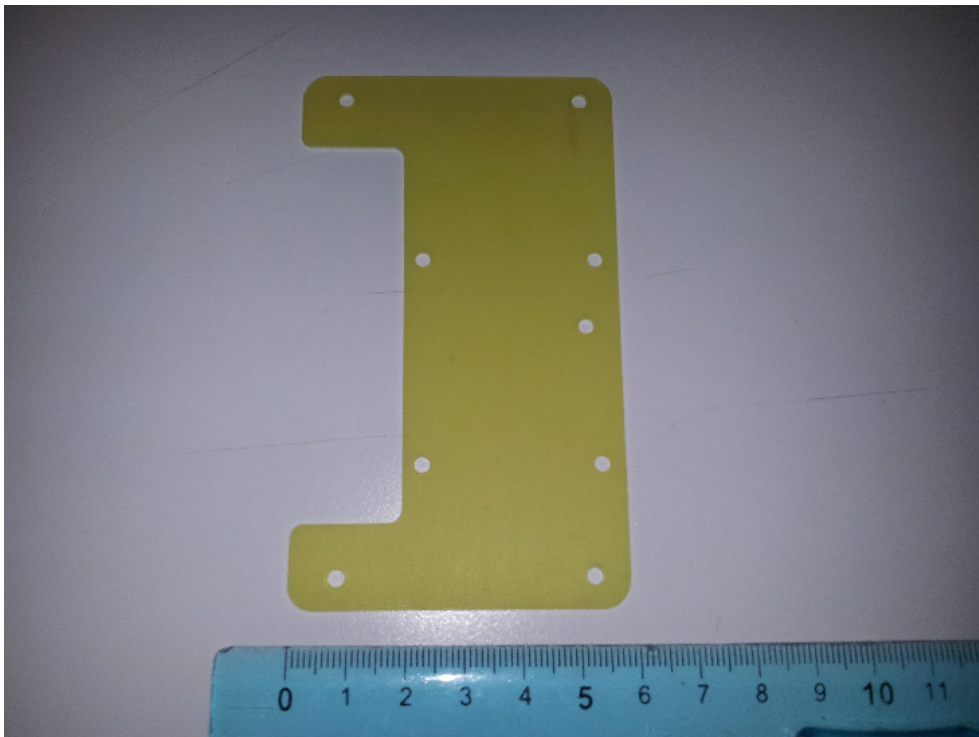


Fig. 1: R1250IU /R1250IUFL/R1250IUB/R1250IUBFL – Support PCB

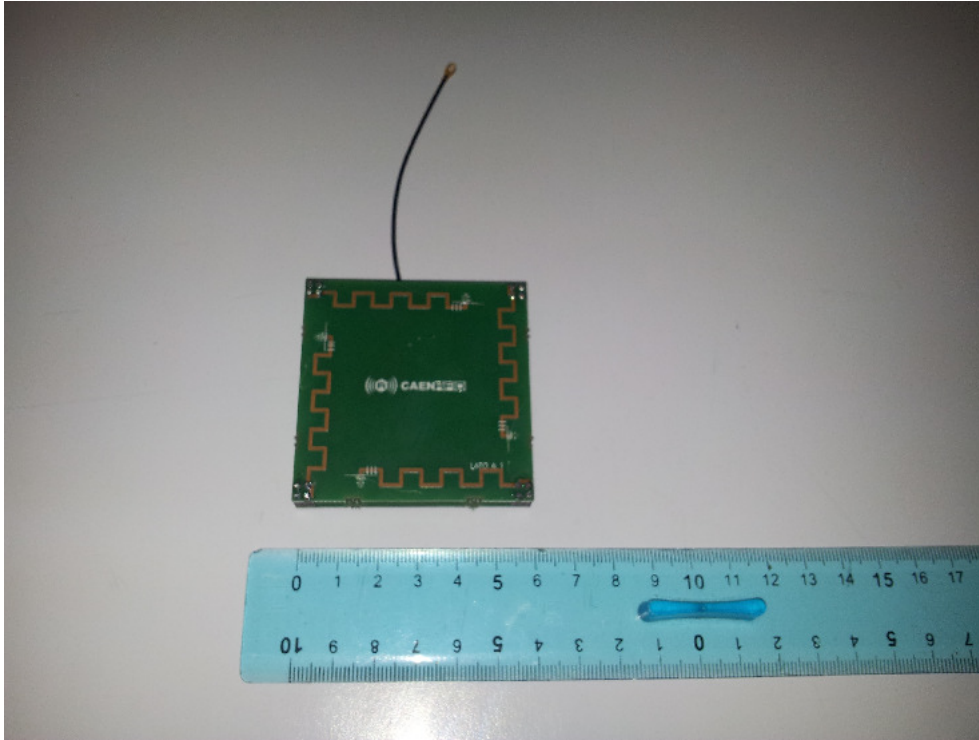


Fig. 2: R1250IU /R1250IUFL/R1250IUB/R1250IUBFL – Antenna FCC Top Side



Fig. 3: R1250IU /R1250IUFL/R1250IUB/R1250IUBFL – Antenna FCC Bottom Side

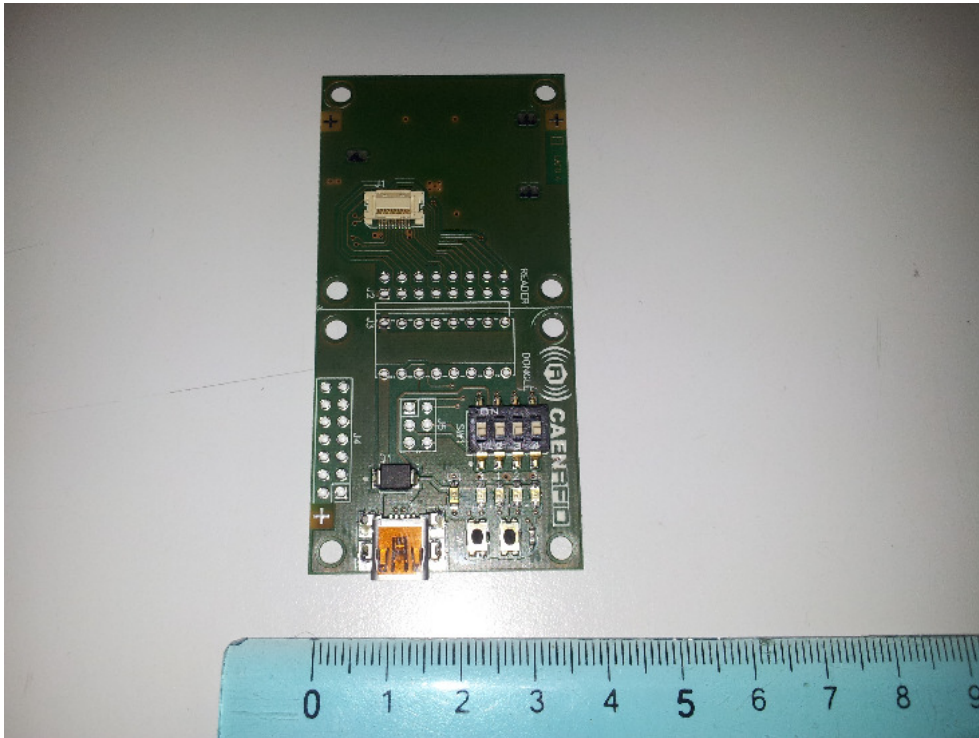


Fig. 4: R1250IU /R1250IUFL/R1250IUB/R1250IUBFL – R1270C Eval. Board Top Side



Fig. 5: R1250IU /R1250IUFL/R1250IUB/R1250IUBFL – R1270C Eval. Board Bottom Side

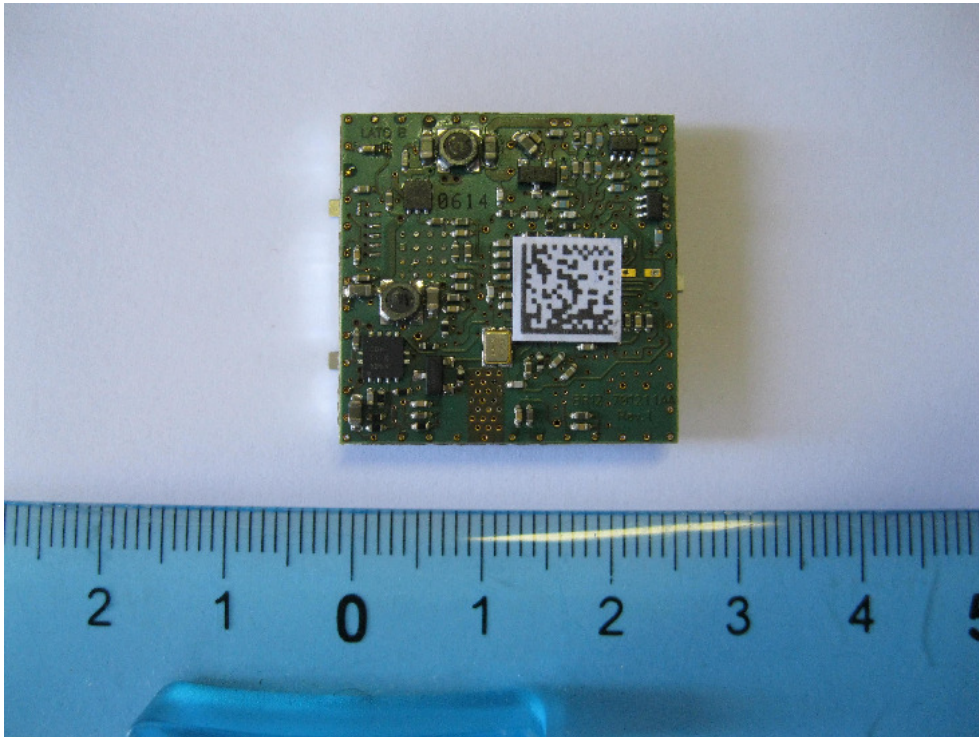


Fig. 6: R1250IU/R1250IUFL/R1250IUB/R1250IUBFL – R1270C Top Side

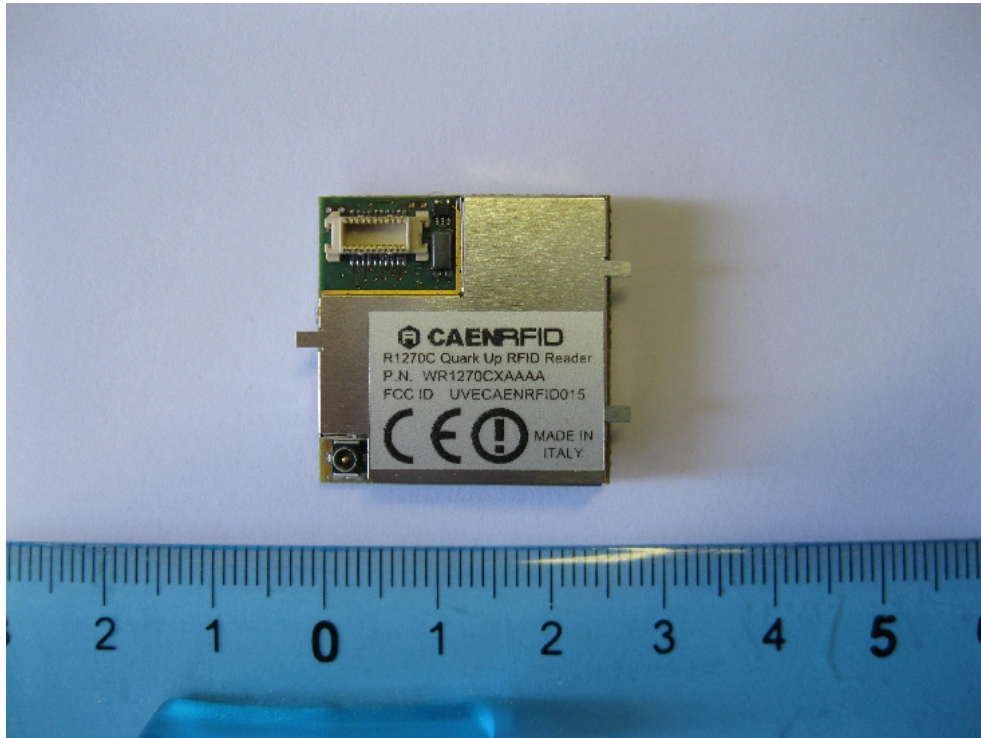


Fig. 7: R1250IU/R1250IUFL/R1250IUB/R1250IUBFL – R1270C Bottom Side



Fig. 8:R1250IU – External Top Side

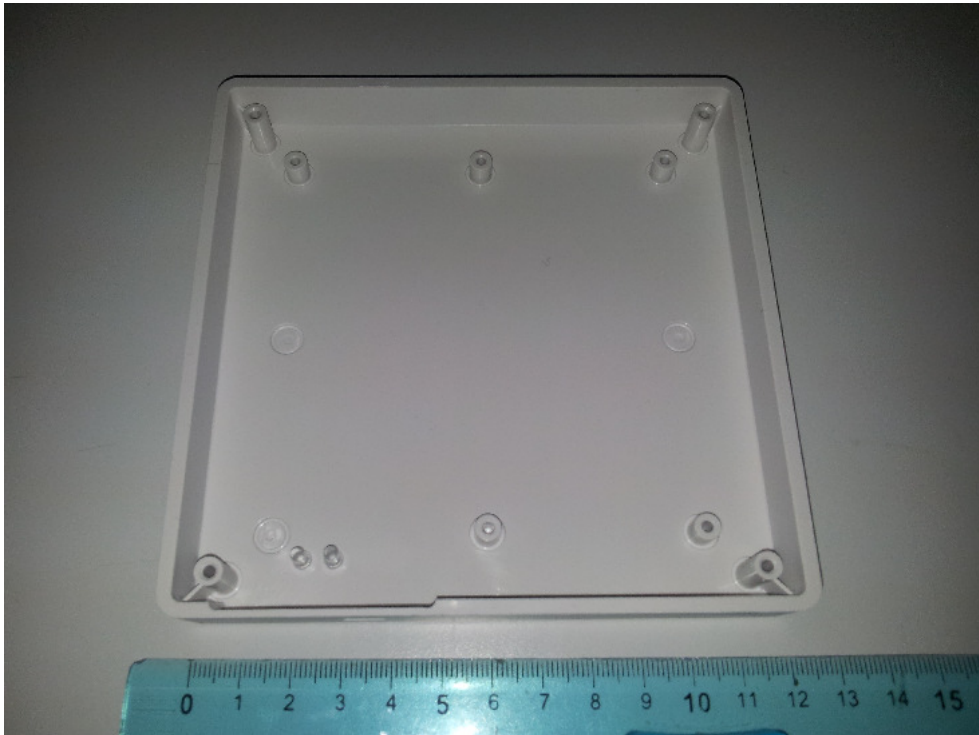


Fig. 9: R1250IU – Internal Top Side

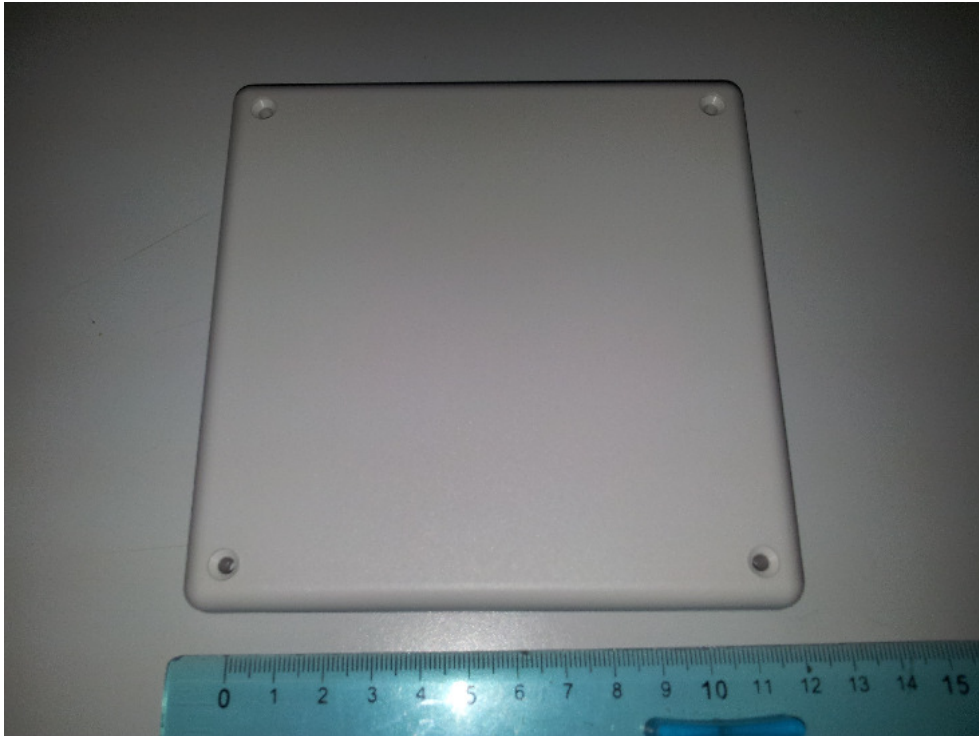


Fig. 10: R1250IU – External Bottom Side

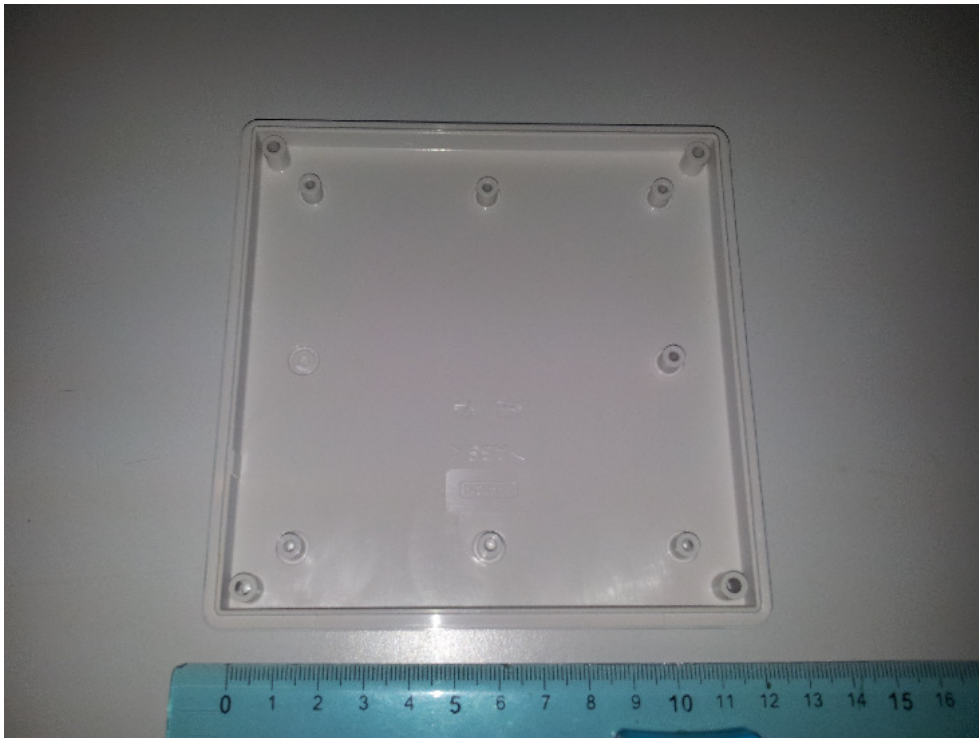
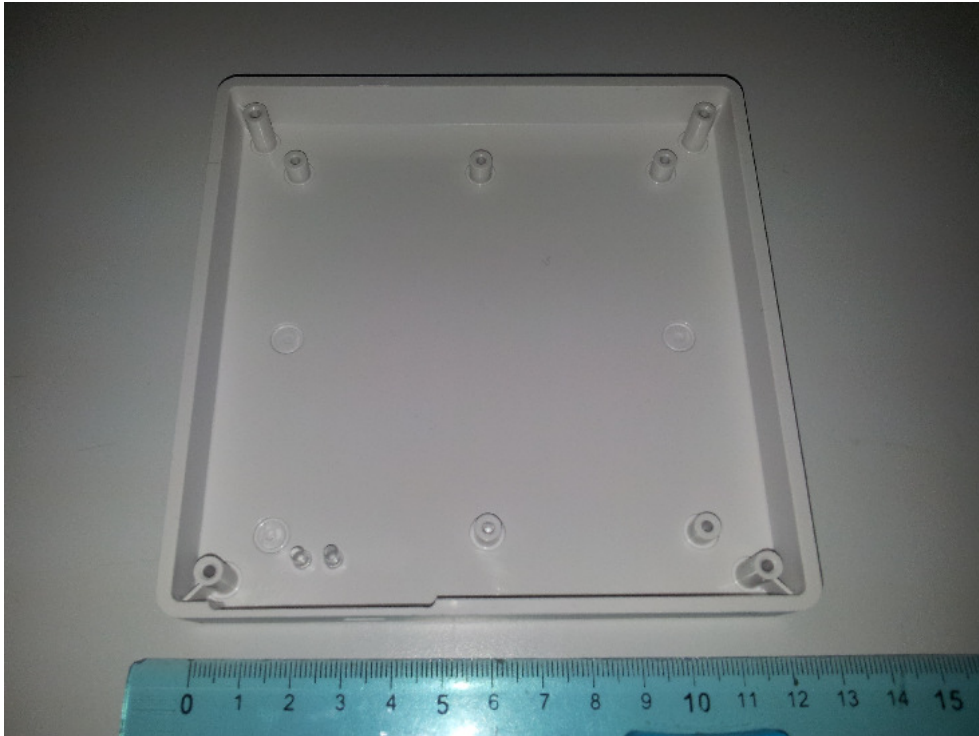


Fig. 11: R1250IU – Internal Bottom Side



Fig. 12: R1250IUFL – External Top Side



.Fig. 13: R1250IUFL – Internal Top Side

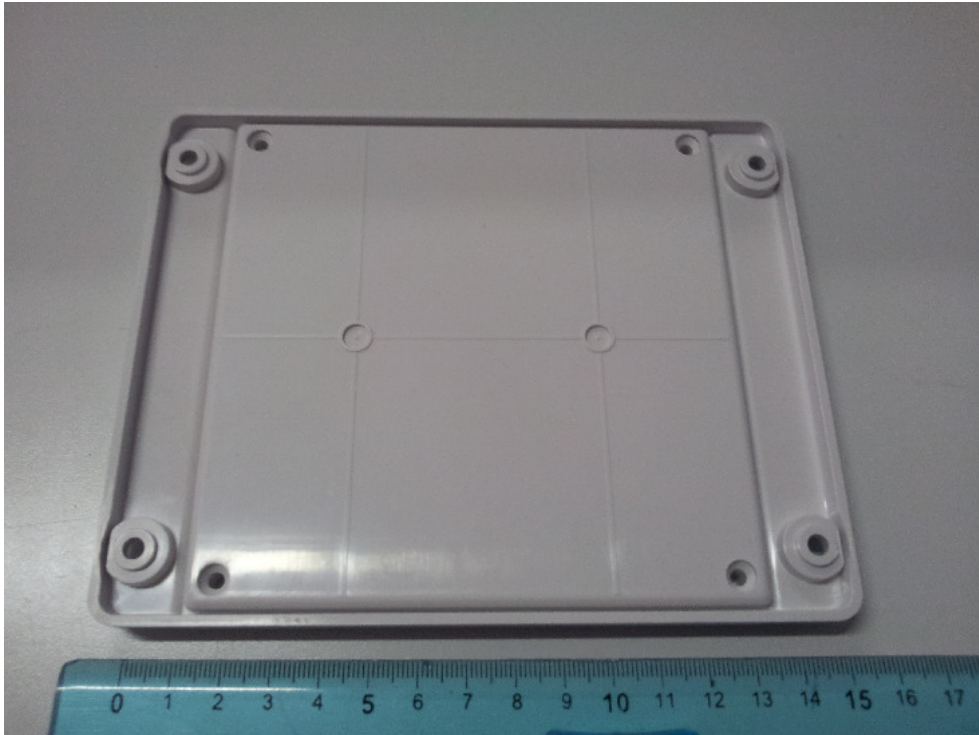


Fig. 14: R1250IUFL – External Bottom Side

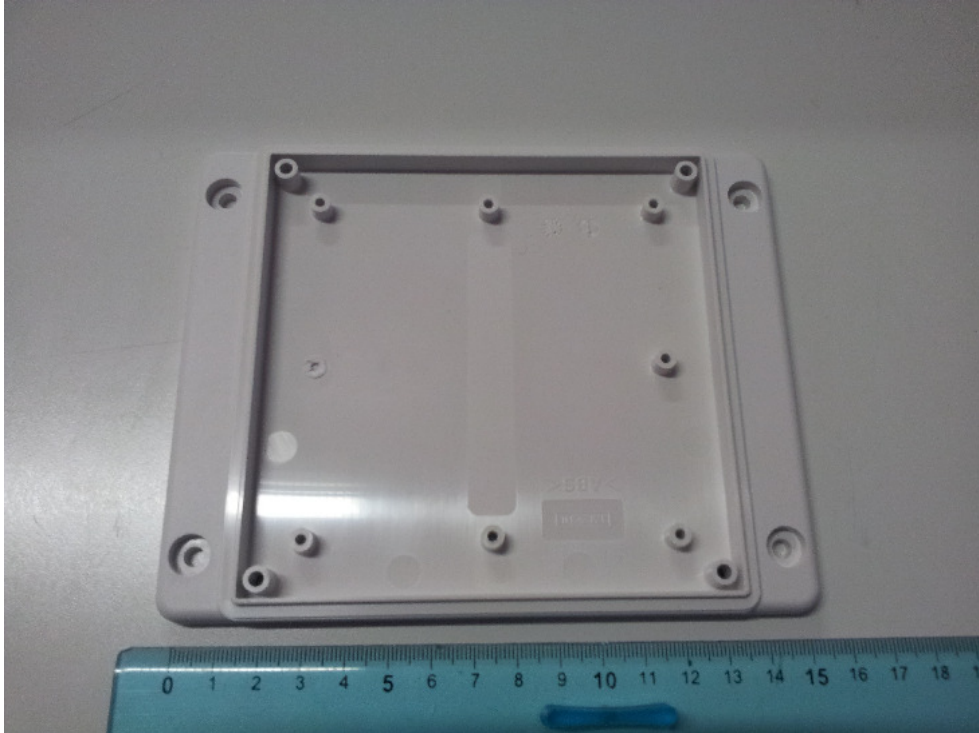


Fig. 15: R1250IUFL – Internal Bottom Side



Fig. 16: R1250IUB – External Top Side



Fig. 17: R1250IUB – Internal Top Side

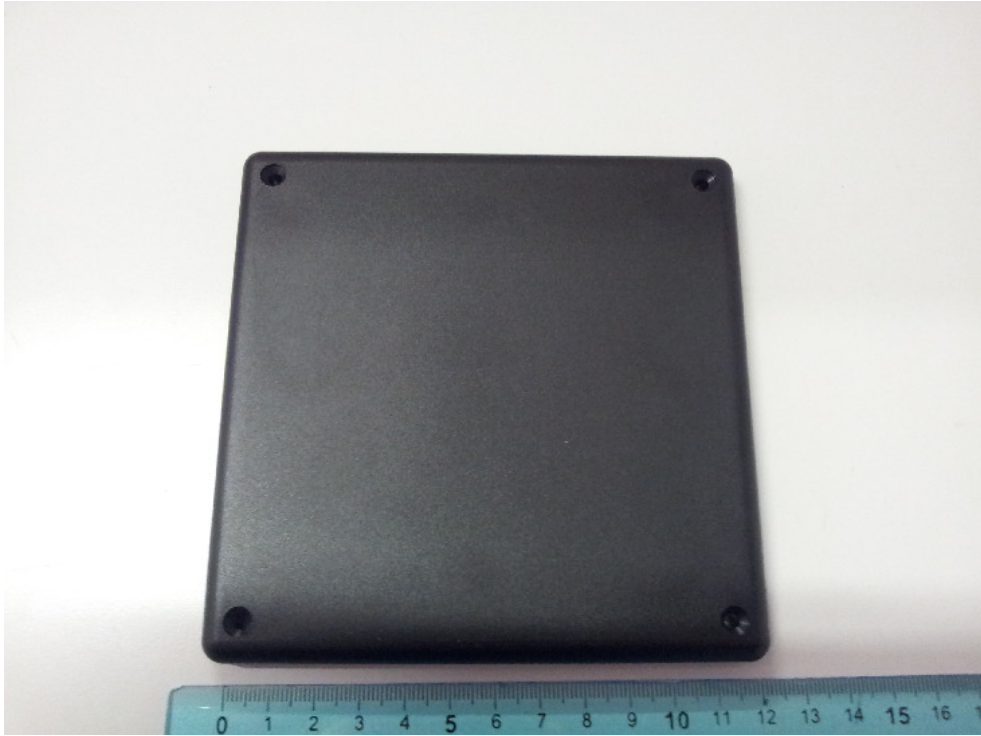


Fig. 18: R1250IUB – External Bottom Side

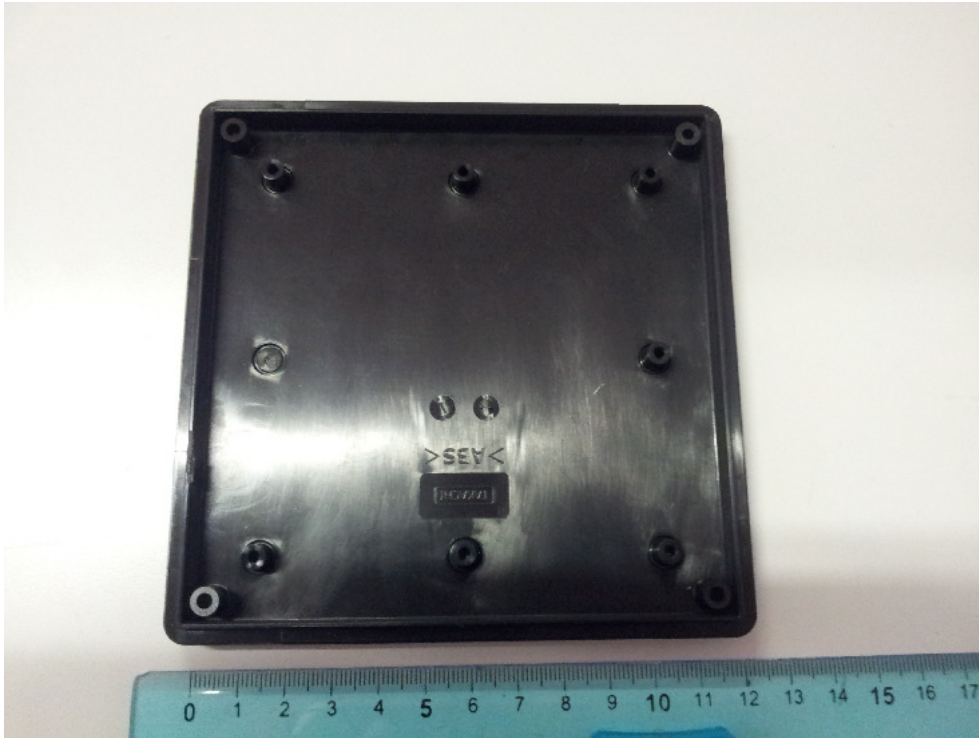


Fig. 19: R1250IUB – Internal Bottom Side



Fig. 20: R1250IUBFL – External Top Side

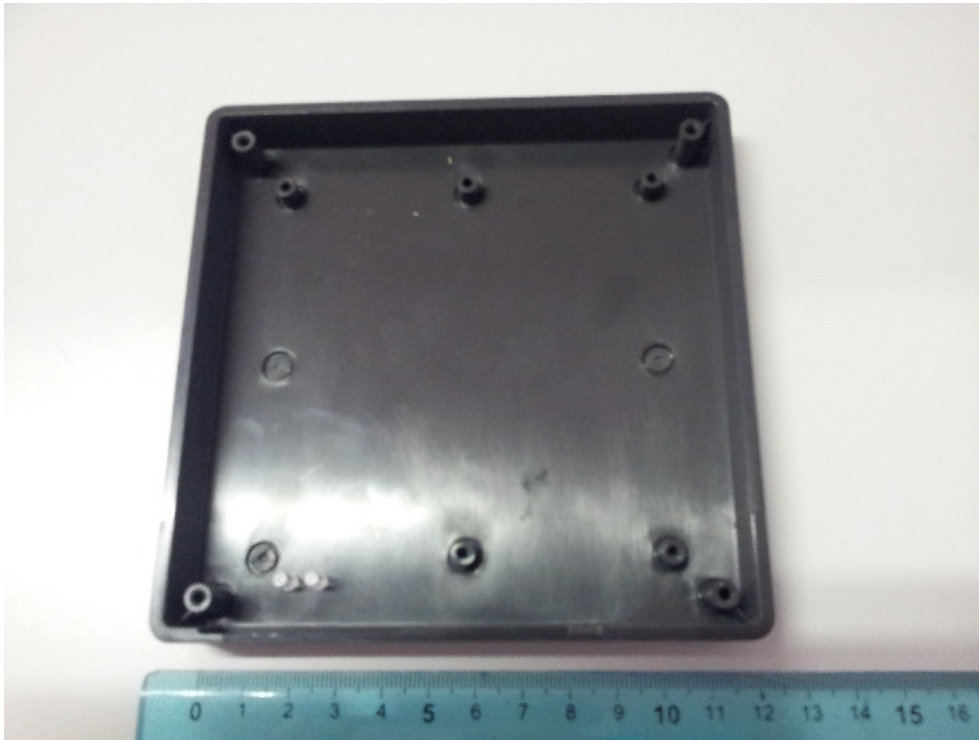


Fig. 21: R1250IUBFL – Internal Top Side

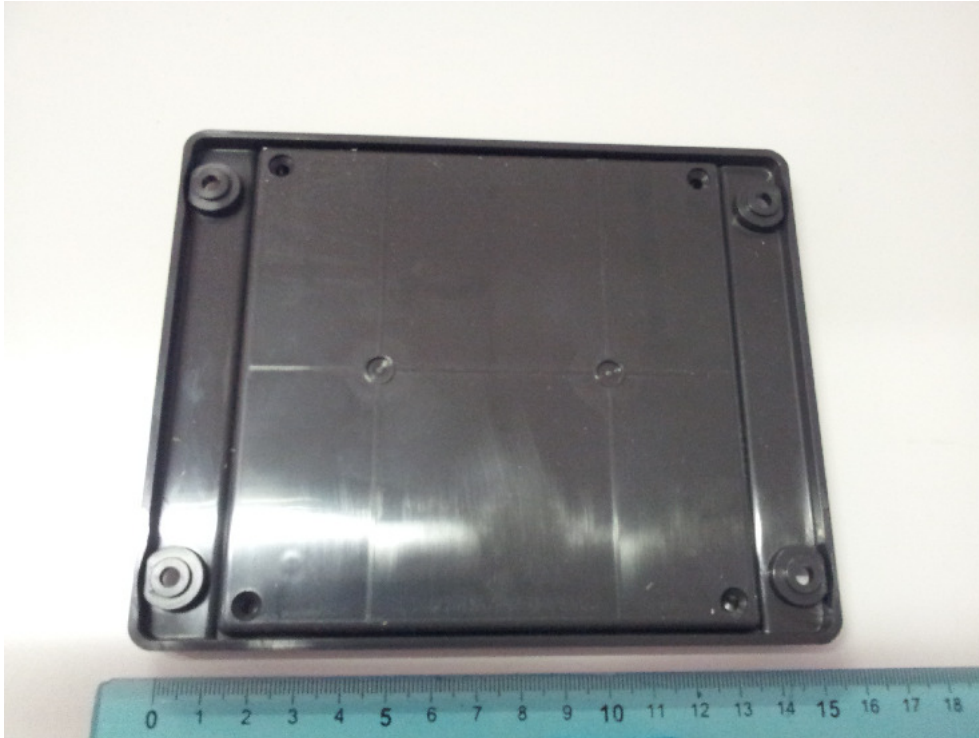
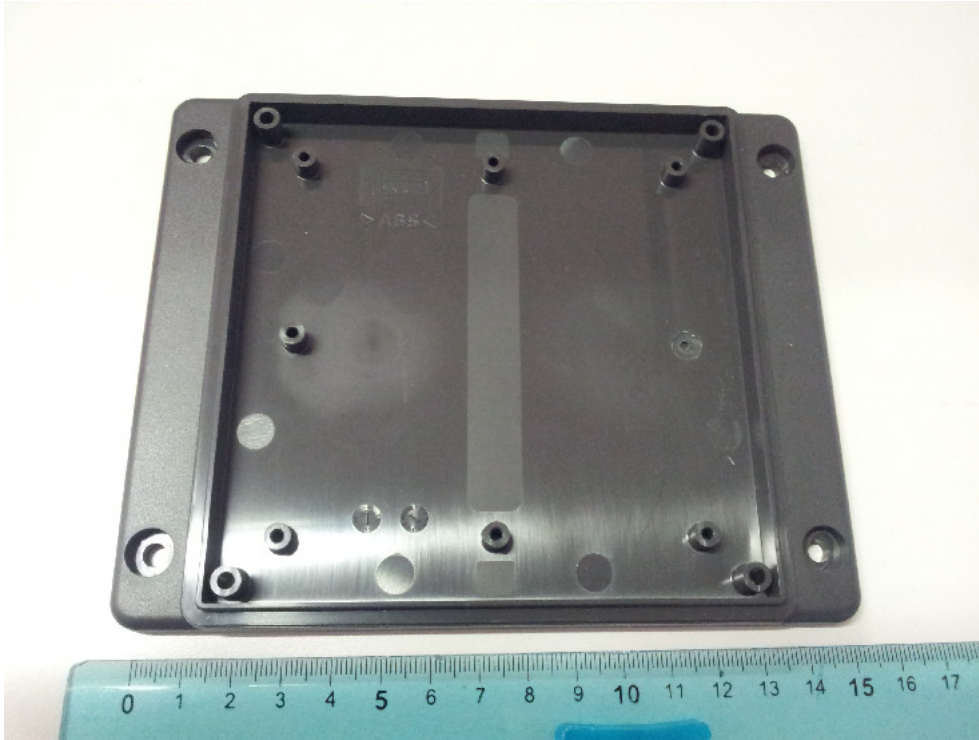


Fig. 22: R1250IUBFL – External Bottom Side



.Fig. 23: R1250IUBFL – Internal Bottom Side

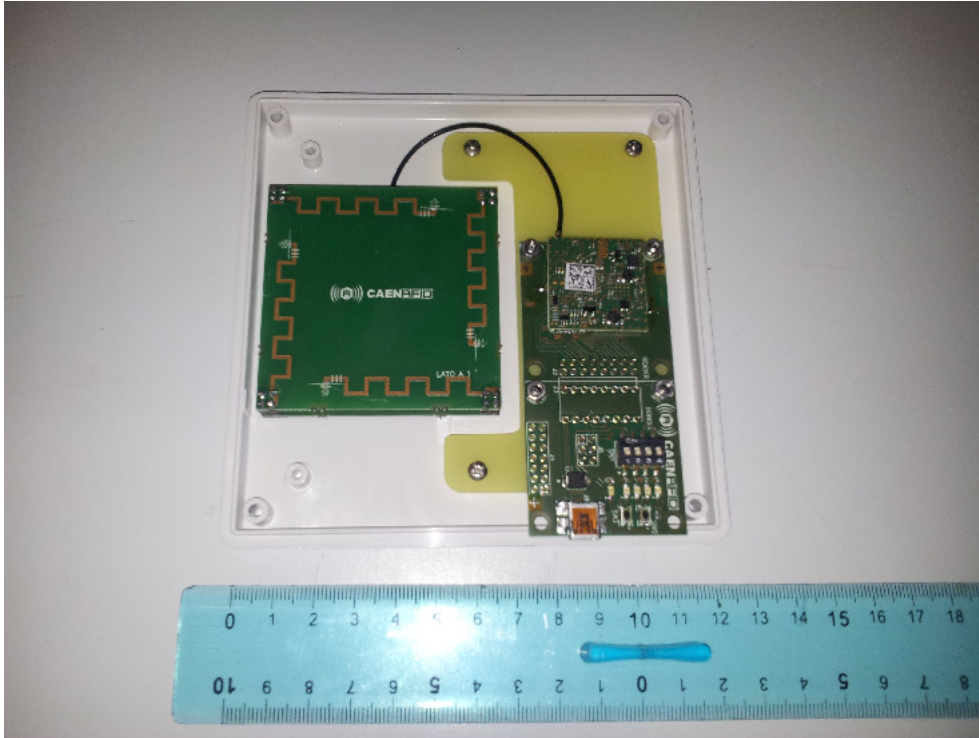


Fig. 24: R1250IU – Assembly Internal View



Fig. 25: R1250IUFL – Assembly Internal View

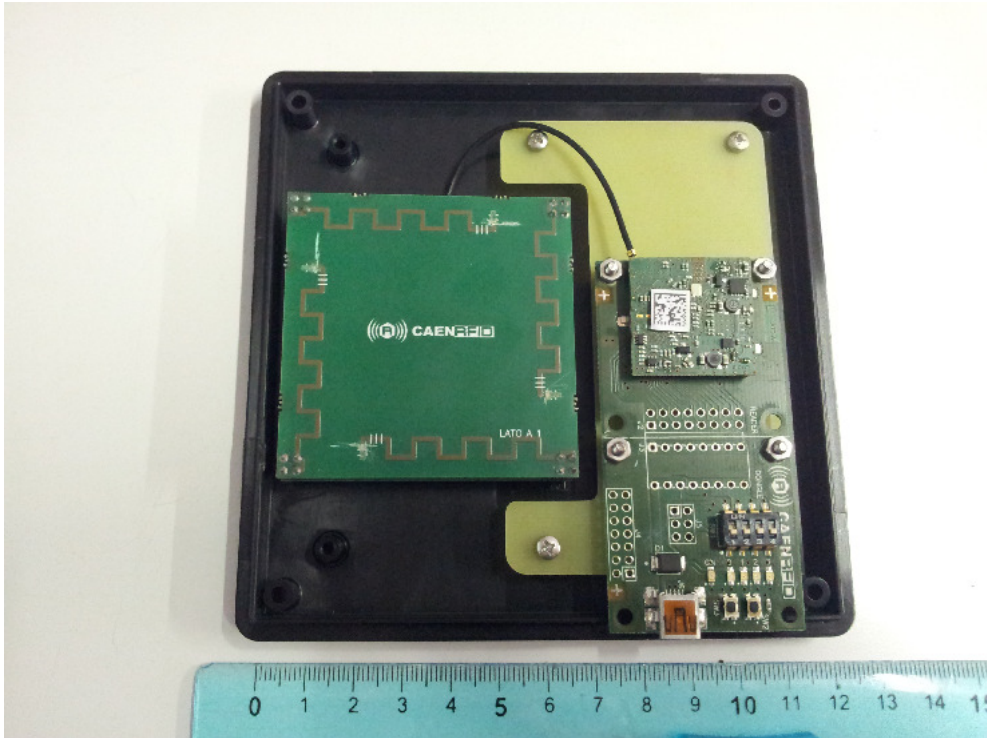


Fig. 26: R1250IUB – Assembly Internal View

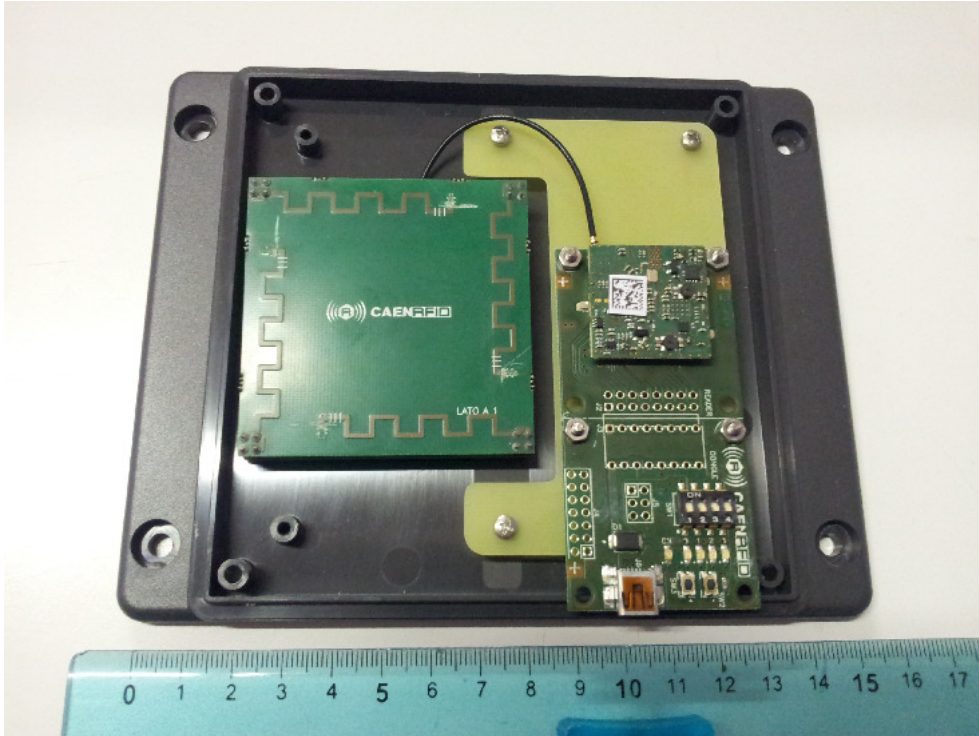


Fig. 27: R1250IUBFL – Assembly Internal View