

RFID SOFTWARE USER INTERFACE



Technical Information Manual

Revision n. 02

14/01/2011

Scope of Manual

The goal of this manual is to provide the basic information to work with the RFID Software User Interface.

Change Document Record

Date	Revision	Changes
18 Feb 2006	01	First release.
14 Jan 2011	02	Added Federal Communications Commission (FCC) Notice

CAEN RFID srl

Via Vetraia, 11 55049 Viareggio (LU) - ITALY
Tel. +39.0584.388.398 Fax +39.0584.388.959
info@caenrfid.it
www.caenrfid.it

© CAEN RFID srl – 2010

Disclaimer

No part of this manual may be reproduced in any form or by any means, electronic, mechanical, recording, or otherwise, without the prior written permission of CAEN RFID.

The information contained herein has been carefully checked and is believed to be accurate; however, no responsibility is assumed for inaccuracies. CAEN RFID reserves the right to modify its products specifications without giving any notice; for up to date information please visit www.caenrfid.it.

Federal Communications Commission (FCC) Notice (Preliminary)¹

This device was tested and found to comply with the limits set forth in Part 15 of the FCC Rules. Operation is subject to the following conditions: (1) this device may not cause harmful interference, and (2) this device must accept any interference received including interference that may cause undesired operation. These limits are designed to provide reasonable protection against harmful interference when the equipment is operated in a commercial environment.

This device generates, uses, and can radiate radio frequency energy. If not installed and used in accordance with the instruction manual, the product may cause harmful interference to radio communications. Operation of this product in a residential area is likely to cause harmful interference, in which case, the user is required to correct the interference at their own expense. The authority to operate this product is conditioned by the requirements that no modifications be made to the equipment unless the changes or modifications are expressly approved by CAEN RFID.

¹ This declaration only applies to FCC readers A828US, A829US, A528, R1230CB, R1260I.

Index

Scope of Manual	2
Change Document Record	2
Index	3
List of Figures	4
List of Tables	5
1 Introduction	6
General Information	7
2 Getting Started	8
Software User interface: Installation.....	9
Launching the Software User interface	10
Connection configuration	10
Reader protocol configuration.....	11
Network configuration	11
Input output management	11
Logical source selection	12
Detecting test tags with the RF field	12
Readout of one tag’s memory	14
EPC protocol tags operations.....	15
Temperature monitoring with the semipassive tag	17
Creating the Log file.....	17
RF Field test	17
Quit CAEN RFID Demo program	18
ISO18000-6B protocol tags operations	18
EPC1.19 protocol tags operations	19
EPC 1.19 Tag Data memory mapping (96 bit)	19
EPC 1.19 Tag Data memory mapping (64 bit)	20
3 Firmware Upgrade	21
Firmware upgrade via serial port	22
Firmware upgrade via TCP/IP	23
4 RFID Test Program	25
Connection configuration	26
Settings	27
Antenna selection	27
Protocol selection	27
Power settings.....	28
Reader network configuration	28
Start Test.....	28
Quit CAEN RFID Test program	29
5 RFID CsDemo Program	30
Connection configuration	31
Start inventory	32
Read tags memory.....	32

List of Figures

Fig. 2.1: CAEN RFID CD Main Menu	9
Fig. 2.2: CAEN RFID Demo start window	10
Fig. 2.3: Connection port configuration	10
Fig. 2.4: Reader Network configuration	11
Fig. 2.5: Reader Network configuration	11
Fig. 2.6: Logical source selection and test	12
Fig. 2.7: Event mode configuration	13
Fig. 2.8: Change Event mode message	13
Fig. 2.9: Asynchronous Acquisition configuration	13
Fig. 2.10: RFID Server	14
Fig. 2.11: Tags memory	15
Fig. 2.12: Tag readout	15
Fig. 2.13: Tag programming	16
Fig. 2.14: Tag killing	16
Fig. 2.15: Temperature monitoring/1	17
Fig. 2.16: Temperature monitoring/2	17
Fig. 2.17: ISO18000-6B Tags memory	18
Fig. 2.18: ISO18000-6B Tag readout	18
Fig. 2.19: EPC1.19 Tag programming	19
Fig. 2.20: EPC1.19 Tag locking	19
Fig. 2.21: General structure of 96 bit EPC number	19
Fig. 2.22: Separation of 96 bit data structure for UCODE EPC 1.19	20
Fig. 2.23: Mapping of 96 bit data structure into UCODE EPC 1.19 memory	20
Fig. 2.24: General structure of 64 bit EPC number	20
Fig. 2.25: Separation of 64 bit data structure for UCODE EPC 1.19	20
Fig. 2.26: Mapping of 64 bit data structure into UCODE EPC 1.19 memory	20
Fig. 3.1: CAEN RFID DEMO directories	22
Fig. 3.2: CAEN RFIDUpgrade/1	22
Fig. 3.3: Selecting the image file	22
Fig. 3.4: PumpKIN Menu Window	23
Fig. 3.5: PumpKIN Options Window	23
Fig. 3.6: Firmware upgrade browser	23
Fig. 3.7: Firmware upgrade message	24
Fig. 3.8: Confirmation message	24
Fig. 4.1: RFID Test main menu	26
Fig. 4.2: Connection port configuration	26
Fig. 4.3: Source selection	27
Fig. 4.4: Setting the protocol	27
Fig. 4.5: Power settings fields	28
Fig. 4.6: Network configuration	28
Fig. 4.7: Tags detection	28
Fig. 5.1: RFID Test main menu	31
Fig. 5.2: Connection confirmation	31
Fig. 5.3: Tags detection	32
Fig. 5.4: Tags memory readout	32



List of Tables

Tab. 2.1: CAEN RFID DEMO directories.....	10
---	----

1 Introduction





General Information

The present manual describes how to operate with the software pack provided with CAEN RFID UHF readers and development kits.

- The CD includes the following tools:
- RFID Java Demo program
- RFID Visual C++ test program
- RFID .Net Sample
- Upgrade firmware and protocols (for A928EU/A948EU, A828EU/A829EU, A828US/A829US, A949EU/A946EU)
- Uninstall tool

2 Getting Started



Software User interface: Installation

Before you begin, be sure that:

1. the Reader is not connected to your computer;
2. the Reader supports your operating system (Windows 2000/XP);

To install the software:

Place the CD in the CD tray in your PC.

Then the following menu will open:



© 2004 CAEN - Costruzioni Apparecchiature Elettroniche Nucleari spa. All rights reserved.

Fig. 2.1: CAEN RFID CD Main Menu

If the menu does not open, then

- Double-click on "My Computer".
- Double-click on the CD-ROM drive.
- Double click on "index.html".

Double-click on the file name "[Install CAEN RFID Demo](#)" option.

Setup will install the files in the folder listed under "Destination Folder". To install to this folder, click "Next". To install to a different folder, click "Browse" and select another folder.

The Setup program creates the following directories:

Directory/file name	Directory files description
Java	RFID Demo Java Version (see § Getting Started pag.8)
CAENRFIDlib.dll ²	Include files
lib	CAENRFIDlib.lib (stub for Microsoft Visual C++ 6.0)
sources	demo program Microsoft Visual C++ 6.0 Source files
RFID_Demo.exe	demo program
RFIDUpgrade.exe	Upgrade firmware and protocols

² CAENRFIDLib library is described in the relevant Technical Information Manual

TestRFID.exe	RFID Test program
Unins000	Uninstall tool

Tab. 2.1: CAEN RFID DEMO directories

Launching the Software User interface

The RFID Demo Java Version is started by launching the CAENRFIDJavaDemo.jar file in the CAEN_RFID_Development_kit_Java\CAENRFIDJavaDemo folder in the CD's "Programmer's Interface" directory.

The present program is developed for demonstrative purposes, the Java classes are available in the "Programmer's Interface" directory of the CD.

Before launching the RFID Demo Java Version, it is necessary to install the Java 2 Platform Standard Edition 5.0, available at: <http://java.sun.com/j2se/1.5.0/download.jsp>

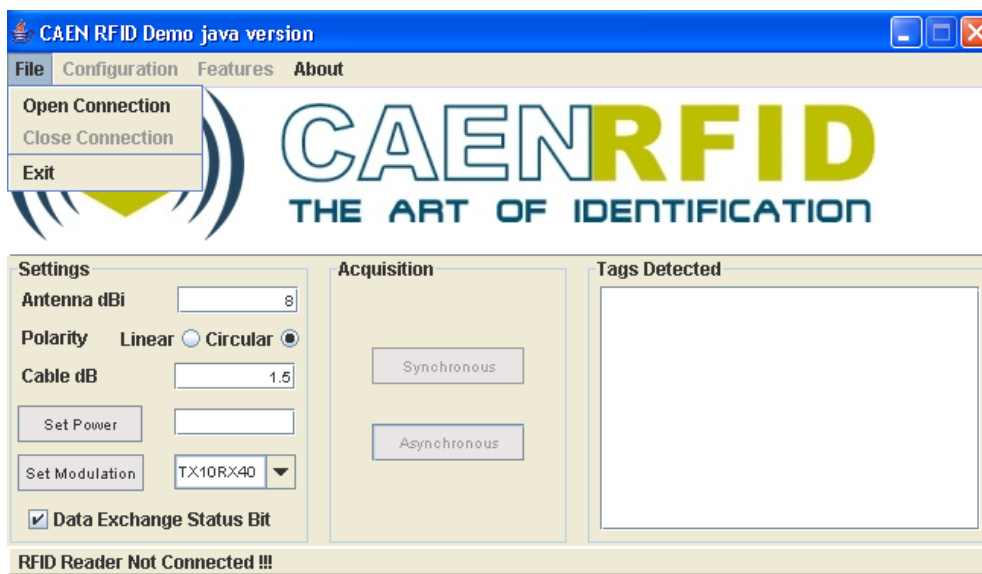


Fig. 2.2: CAEN RFID Demo start window

Connection configuration

Once you have connected the CAEN UHF RFID Reader to your PC, turn it ON, then:

Click on

File > Open connection

The following pop-up window will open:



Fig. 2.3: Connection port configuration

Choose the connection type; if you are using TCP-IP enter the IP address (default address: 192.168.0.125), if you are using RS232, type the connected port (COM1, COM2...) then click on <Connect>. If you wish to use RS232 or USB, please make sure that the Java Platform you are running supports such ports.

Reader protocol configuration

Optionally, it is possible to change the used protocol (ISO18000-6B or EPC C1G1/C1G2);

Click on

configuration > change reader's protocol

A pop-up window will allow to chose between ISO18000-6B (which supports also Philips UCODE EPC 1.19) and EPC C1G1.

If the protocol is changed, a reader reboot will be performed; then it is necessary to shut and re-start the CAEN RFID Demo program.

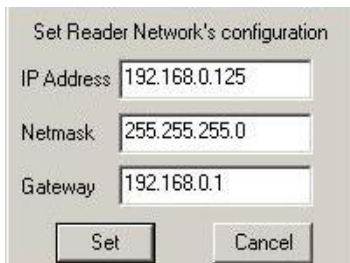
Network configuration

Optionally, it is possible to update the reader's network settings;

Click on

configuration > network setup

The following pop-up window will open (the figure shows the default configuration):



The dialog box titled "Set Reader Network's configuration" contains three input fields: "IP Address" with the value "192.168.0.125", "Netmask" with "255.255.255.0", and "Gateway" with "192.168.0.1". At the bottom, there are two buttons: "Set" and "Cancel".

Fig. 2.4: Reader Network configuration

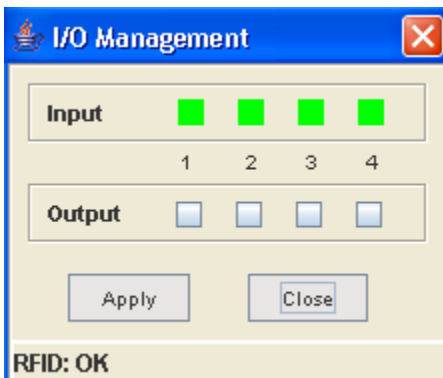
Input output management

This function allows to handle the reader general purpose inputs/outputs;

Click on

configuration > I/O Management

By checking the Output boxes, the relevant signal will be driven high. The Input status is also monitored: red = active, green = idle.



The "I/O Management" dialog box has a blue title bar. It features two sections: "Input" and "Output". The "Input" section has four green squares labeled 1, 2, 3, and 4. The "Output" section has four unchecked checkboxes labeled 1, 2, 3, and 4. At the bottom, there are "Apply" and "Close" buttons. A status bar at the very bottom displays "RFID: OK".

Fig. 2.5: Reader Network configuration

Logical source selection

Click on

configuration > configure logical source

The following pop-up window will open:

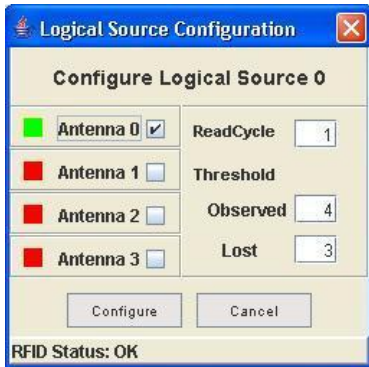


Fig. 2.6: Logical source selection and test

The antenna(s) status is checked:

BAD (antenna not connected) = RED

POOR (antenna with faulty operation) = YELLOW

GOOD (antenna ok) = GREEN

Then choose the antenna(s) you wish to use.

Finally it is necessary to set the thresholds:

Observed:

READCYCLE MODE (see § Detecting test tags with the RF field pag.12): the number of subsequent times a tag must appear in an acquisition before it shifts from “glimpsed” to “observed”.

TIME MODE (see § Detecting test tags with the RF field pag.12): the number of milliseconds a tag must appear in an acquisition before it shifts from “glimpsed” to “observed”.

Lost:

READCYCLE MODE: the number of subsequent times an observed tag must disappear from an acquisition before it shifts from “observed” to “lost”.

TIME MODE: the number of milliseconds an observed tag must disappear from an acquisition before it shifts from “observed” to “lost”.

Read Cycle: the number of times an acquisition must be timed out and then restarted

Confirm settings by clicking on <Configure>.

Thresholds are meaningful only with Asynchronous Acquisition (see § Detecting test tags with the RF field pag.12).

Detecting test tags with the RF field

Now the Reader is ready for detecting tags; click on either:

<Synchronous Acquisition>

<Asynchronous Acquisition>

With **Synchronous Acquisition**, a “one shot” readout is performed.

Asynchronous Acquisition allows to perform either Timed Acquisition or a I/O Timed-out acquisition.

In the first place it is necessary to set the “Event mode” by clicking on:

Configuration>Configure Event Mode

The following window opens:



Fig. 2.7: Event mode configuration

If READCYCLE MODE is selected, the logical source thresholds are expressed in cycles, whose duration is equal to the Delay time set when Asynchronous Acquisition is launched.

If TIME MODE is selected, the logical source thresholds are expressed in milliseconds; it must be noticed that the thresholds might not be multiple of the delay time, so a tag can change its status after a non-integer number of cycles.

If NOEVENT MODE is selected, the tags are continuously scanned, the threshold values are meaningless (the tag is considered either inside or outside the reader's field and no Glimpsed/Observed status is notified)

After changing Event Mode it is necessary to restart both the Reader and the RFID Demo Java Version. The following message will be shown:

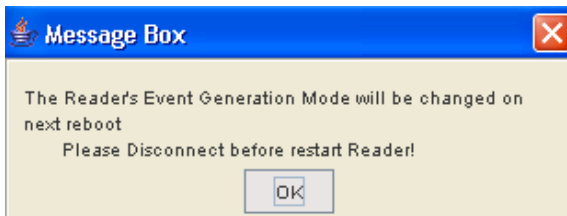


Fig. 2.8: Change Event mode message

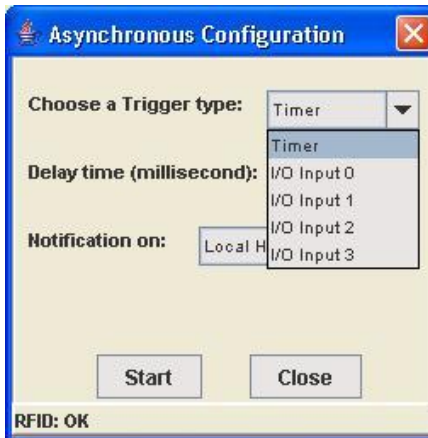


Fig. 2.9: Asynchronous Acquisition configuration

If you wish to make a **Timed Acquisition** in READCYCLE MODE:

- choose "Timer" as trigger type in the drop down menu of the Asynchronous Configuration which is started as Asynchronous Acquisition is selected.
- set the timer period in "Delay time" field
- set the notification on Local or Remote host: in the latter case you have to enter the host IP address
- "Start" acquisition

The notification takes place on the RFID Server window, which is shown either on the Local host or on the Remote one:

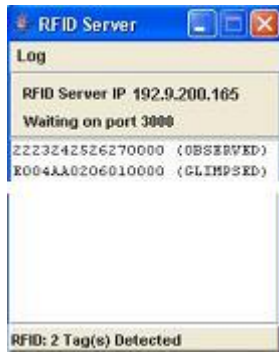


Fig. 2.10: RFID Server

If you wish to make a **I/O Timed-out Acquisition** in READCYCLE MODE:

- choose the General Purpose Input you wish to use as trigger type in the drop down menu of the Asynchronous Configuration.
- set the time out delay in “Delay time” field
- set the notification on Local or Remote host: in the second case you have to enter the host IP address
- “Start” acquisition

The notification takes place on the RFID Server Configuration; after the first acquisition the Reader waits for one “Delay time” period, then checks the status of the used input: if it is high, then the second acquisition takes place, otherwise it is timed out; at this point the Reader waits for another Delay time, then checks the status of the used input again.

If you wish to make a **Timed Acquisition** in TIME MODE:

- choose “Timer” as trigger type in the drop down menu of the Asynchronous Configuration which is started as Asynchronous Acquisition is selected.
- set the timer period in “Delay time” field
- set the notification on Local or Remote host: in the latter case you have to enter the host IP address
- “Start” acquisition

The notification takes place on the RFID Server window, which is shown either on the Local host or on the Remote one. The status does not depend on the number of performed cycles, but **ONLY** on the threshold values (see § Logical source selection pag.12); the “Delay time” must be smaller than the thresholds.

If you wish to make an acquisition in **NOEVENT MODE**, simply :

- set the timer period in “Delay time” field
- set the notification on Local or Remote host: in the latter case you have to enter the host IP address
- “Start” acquisition

The notification takes place on the RFID Server window, which is shown either on the Local host or on the Remote one, no status is notified.

Readout of one tag’s memory

Now the ISO18000-6B detected tags are ready for read/write operations. In case of Timed, Continuous or I/O Acquisition it is necessary to stop scanning, by clicking on the stop acquisition button. Now click on one of the tags’ Unique ID’s; then go to:

```

Features
  >ISO18000-6B
    >Read/Write Tag Memory
  
```

The following window is shown:



Fig. 2.11: Tags memory

By writing in the Value field, it is possible to update the tag memory; changes are saved via the <Update> button, while <Restore> allows to recover the former value.

In order to lock one particular address in the tag memory, go to:

- Features
 - >ISO18000-6B
 - >Lock

The following window is shown; <Lock> allows to lock one particular address, <Cancel> to quit. Locked addresses cannot be changed anymore.



Fig. 2.12: Tag readout

The configuration of the ISO18000-6B compliant tags is the following:

Byte	Content	Status	Description
0,1	E0, 04 hex	locked	Unique serial number
2÷7	xx hex	locked	Unique serial number
8÷10	00 hex	unlocked	User memory
11	02 hex	unlocked	User memory
12÷17	FF hex	unlocked	User memory
18÷219	00 hex	unlocked	User memory
220÷223	57 5F 4F 4B hex	unlocked	"w_ok" in ASCII, user memory

The CAEN RFID Demo program allows to write only bits [2; 17].

EPC protocol tags operations

If EPC tags are detected, then go to:

- Features
 - >EPC
 - >Program ID

For (over)writing the tags ID, setting the password, and locking them:

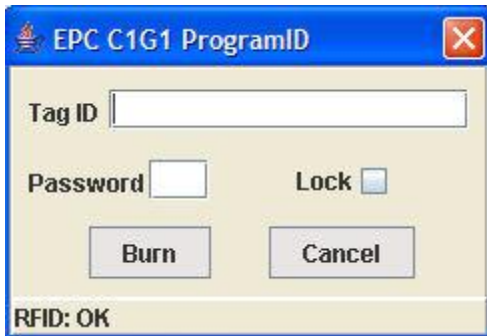


Fig. 2.13: Tag programming

Go to:

Features

>EPC

>Kill

For killing the tag (the password is required). Once killed the tag does not respond to (any) reader anymore.



Fig. 2.14: Tag killing

The configuration of the EPC Class 1 Gen 1 compliant tags is the following:

Byte	Type	Status	Description
00, 01 hex	System	locked	Tag header
02 hex	System	unlocked	EPC portion
03÷07 hex	System	unlocked	EPC portion
08÷0F hex	System	unused	
10÷17 hex	System	unlocked	EPC portion
18÷37 hex	User	unlocked	User memory (256 bit)
38÷FF hex	RFU		

Temperature monitoring with the semipassive tag

The semipassive tag Mod. A927 includes a temperature sensor; so it is possible to view the temperature parameter as a function of time. This is possible by clicking on the thermometer icon.

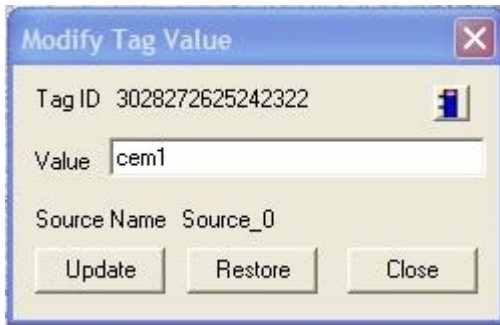


Fig. 2.15: Temperature monitoring/1

A pop-up window with the temperature trace will be then shown:

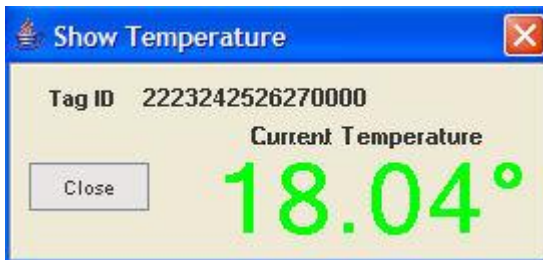


Fig. 2.16: Temperature monitoring/2

Status: Green = tag inside reader's field
 Red = tag outside reader's field

Creating the Log file

Click on

configuration > Enable logging

Then start the "Continuous acquisition".

When the acquisition is stopped, it will be possible to save the log text file, containing information on the detected tags, for example:

```
Tue Apr 19 11:01:19.011 e004840306010000 Glimpsed
Tue Apr 19 11:01:19.101 e004840306010000 Glimpsed
Tue Apr 19 11:01:19.201 e004840306010000 Glimpsed
```

N.B.: creating the Log file is possible only with "Continuous acquisition".

RF Field test

It is possible to test the RF field emissions in the following way:

Click on

configuration > select test & read point

Then select the read point to be tested (0..3).

Go to the main menu, then set the desired power and choose "single acquisition".

Click on

configuration > experimental > RF ON

It is now possible to test the RF field emission on the selected read point.

In order to test another read point it is necessary to repeat the procedure from the start.

Quit CAEN RFID Demo program

For quitting the CAEN RFID Demo program click on
File > exit

Then turn off the reader and disconnect the antenna cable, the power cord and the link cable.

ISO18000-6B protocol tags operations

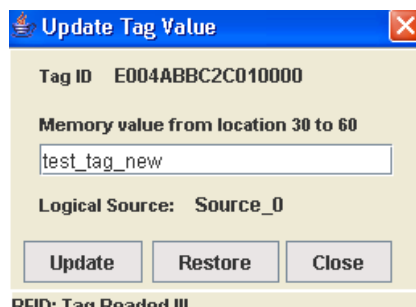
The ISO18000-6B detected tags are ready for read/write operations. It is necessary to stop scanning, by clicking on the stop acquisition button. Now click on one of the tags' Unique ID's; then go to:

Features

>ISO18000-6B

>Read/Write Tag Memory

The following window is shown:



RFID: Tag Readed !!!

Fig. 2.17: ISO18000-6B Tags memory

By writing in the Value field, it is possible to update the tag memory; changes are saved via the <Update> button, while <Restore> allows to recover the former value.

In order to lock one particular address in the tag memory, go to:

Features

>ISO18000-6B

>Lock

The following window is shown; <Lock> allows to lock one particular address, <Cancel> to quit. Locked addresses cannot be changed anymore.

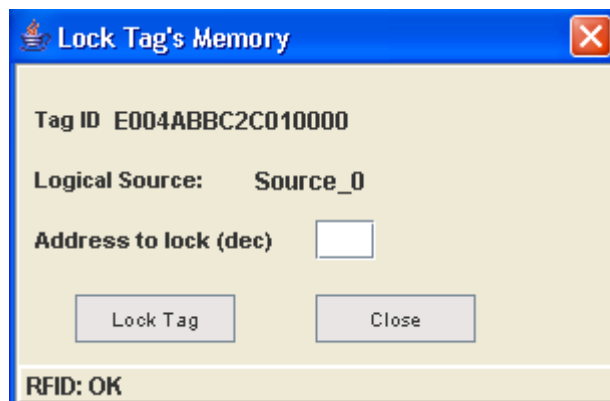


Fig. 2.18: ISO18000-6B Tag readout

The configuration of the ISO18000-6B compliant tags is the following:

Byte	Content	Status	Description
0,1	E0, 04 hex	locked	Unique serial number
2÷7	xx hex	locked	Unique serial number
8÷10	00 hex	unlocked	User memory
11	02 hex	unlocked	User memory
12÷17	FF hex	unlocked	User memory

18÷219	00 hex	unlocked	User memory
220÷223	57 5F 4F 4B hex	unlocked	"w_ok" in ASCII, user memory

The CAEN RFID Demo program allows to write only bits [2; 17].

EPC1.19 protocol tags operations

If EPC1.19 tags are detected, then go to:

Features

>EPC1.19

> Read/Write Tag Memory

For (over)writing the tags ID and Memory:

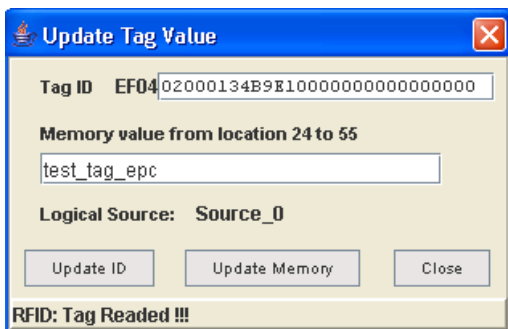


Fig. 2.19: EPC1.19 Tag programming

In order to lock one particular address in the tag memory, go to

Go to:

Features

>EPC1.19

>Lock

The following window is shown; <Lock> allows to lock one particular address, <Cancel> to quit. Locked addresses cannot be changed anymore.

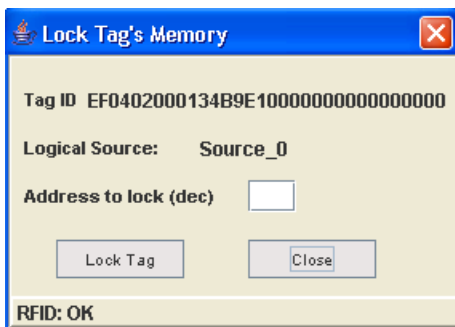


Fig. 2.20: EPC1.19 Tag locking

EPC 1.19 Tag Data memory mapping (96 bit)

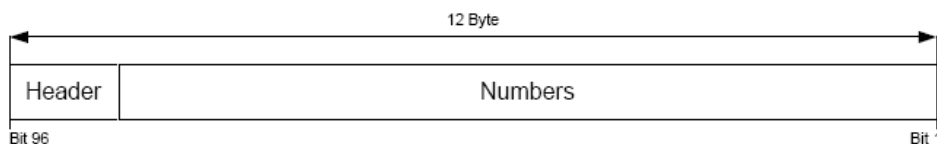


Fig. 2.21: General structure of 96 bit EPC number

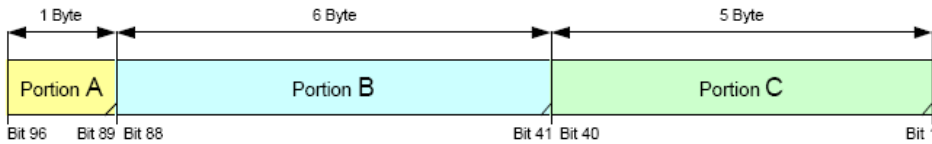


Fig. 2.22: Separation of 96 bit data structure for UCODE EPC 1.19

Byte	00 _{hex}	01 _{hex}	02 _{hex}	03 _{hex}	04 _{hex}	05 _{hex}	06 _{hex}	07 _{hex}
memory content	EF _{hex}	04 _{hex}	Portion A	Portion C				

Byte	10 _{hex}	11 _{hex}	12 _{hex}	13 _{hex}	14 _{hex}	15 _{hex}	16 _{hex}	17 _{hex}
memory content	Portion B						Partition value	Filter value
							0000 0ppp _{bin}	0000 0fff _{bin}

ppp ... containing a copy of the 3 Bit Partition value for selection possibility if a partition exists, otherwise ppp shall be 000_{bin}

fff ... containing a copy of the 3 Bit Filter value for selection possibility if a filter exists, otherwise fff shall be 000_{bin}

Fig. 2.23: Mapping of 96 bit data structure into UCODE EPC 1.19 memory

EPC 1.19 Tag Data memory mapping (64 bit)

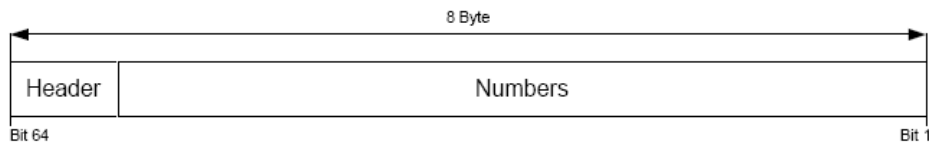


Fig. 2.24: General structure of 64 bit EPC number

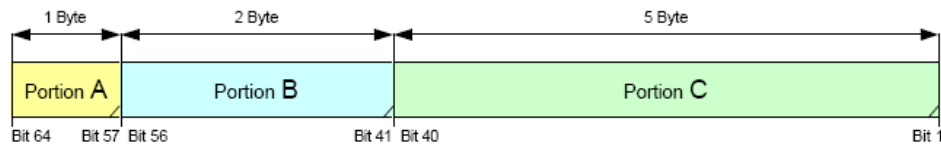


Fig. 2.25: Separation of 64 bit data structure for UCODE EPC 1.19

Byte	00 _{hex}	01 _{hex}	02 _{hex}	03 _{hex}	04 _{hex}	05 _{hex}	06 _{hex}	07 _{hex}
memory content	EF _{hex}	04 _{hex}	Portion A	Portion C				

Byte	10 _{hex}	11 _{hex}	12 _{hex}	13 _{hex}	14 _{hex}	15 _{hex}	16 _{hex}	17 _{hex}
memory content	Portion B		0000 0000 _{bin}	0000 0000 _{bin}	0000 0000 _{bin}	0000 0000 _{bin}	0000 0000 _{bin}	Filter value
								0000 0fff _{bin}

fff ... containing a copy of the 3 Bit Filter value for selection possibility if a filter exists, otherwise fff shall be 000_{bin}

Fig. 2.26: Mapping of 64 bit data structure into UCODE EPC 1.19 memory

3 Firmware Upgrade



Firmware upgrade via serial port

In order to upgrade the Reader firmware, connect the it with the PC Host via RS232, then open the following directory:



Fig. 3.1: CAEN RFID DEMO directories

Now launch RFIDUpgrade.exe:



Fig. 3.2: CAEN RFIDUpgrade/1

Select “Firmware” in the Upgrade Menu and the connected port, then Browse the image file to be uploaded (for example: image-2.0b.bin):

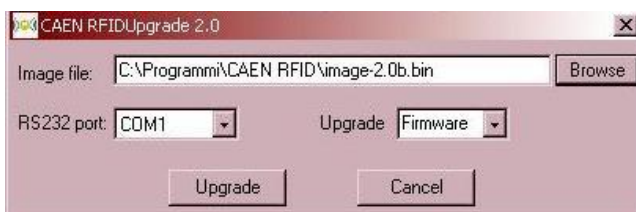


Fig. 3.3: Selecting the image file

Now click on <Upgrade>; it will take 10 minutes for uploading the updated firmware and rebooting the Reader; when the Reader is ready the ISO/EPC and the Active leds will light up: **do not turn off** the Reader before the Active led lights on and then off!

The image file can be found in the Upgrade_img_file directory of the “Driver, Demo software and Technical manuals” CD ROM (included in the RFID Development Kit); it can also be downloaded at:

<http://www.caen.it/rfid/english/download.php>

Firmware upgrade via TCP/IP

The Firmware upgrade via TCP/IP works only with the CAENRFID Demo Java Version. First you need a TFTP Server & Client application, if you have not one installed, you can download (from <http://www.klever.net/>), install and run the pumpkin.exe freeware application:

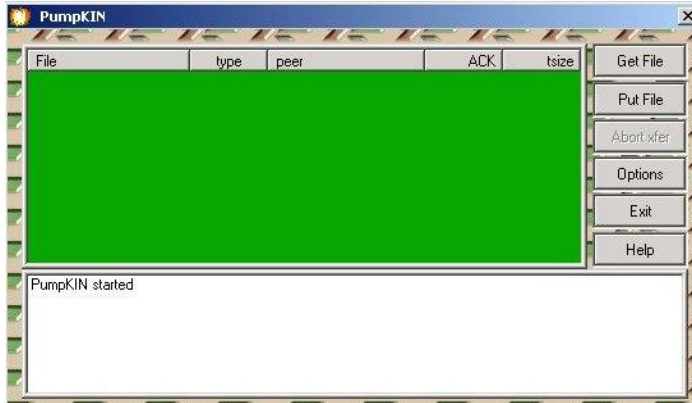


Fig. 3.4: PumpKIN Menu Window

Select [Options] and browse the folder where the image file resides with the following selections, then press [OK]

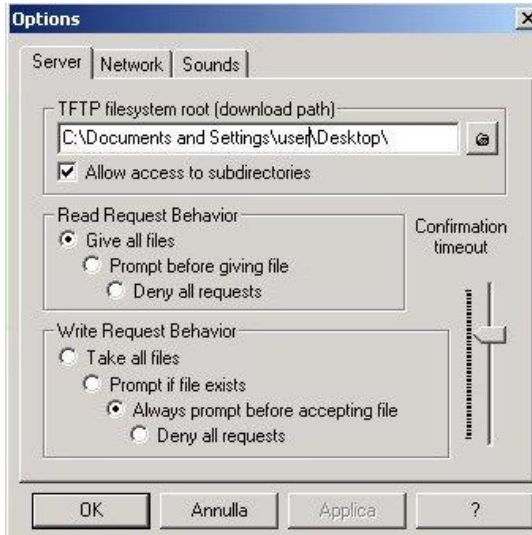


Fig. 3.5: PumpKIN Options Window

Connect to the Reader by using CAEN RFID Demo Java version and select Configuration>Firmware Upgrade enter the TFTP server address and browse the image file to be loaded into the Reader, then press [OK]:



Fig. 3.6: Firmware upgrade browser

The following information message will then be shown:



Fig. 3.7: Firmware upgrade message

Press ok and this confirmation message will be returned:



Fig. 3.8: Confirmation message

Press YES then Download image via TFTP; the Firmware Upgrade is then completed.

4 RFID Test Program



This is a simple VisualC++ test program: go to the main directory CAEN RFID DEMO KIT, then launch the TestRFID.exe executable file; the following Menu will be launched:

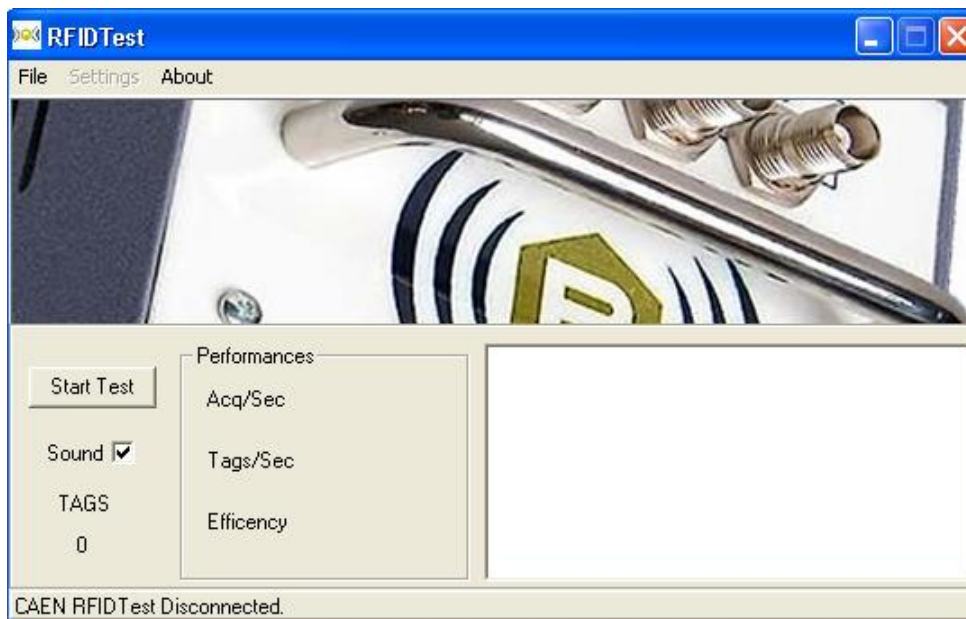


Fig. 4.1: RFID Test main menu

Connection configuration

Once you have connected the CAEN UHF RFID Reader to your PC, turn it ON, then:

Click on

File > Connect

The following pop-up window will open:



Fig. 4.2: Connection port configuration

Choose the connection type; if you are using TCP-IP enter the IP address (default: 192.168.0.125), if you are using RS232, type the connected port (COM1, COM2...) then click on <Connect>.

Settings

Antenna selection

Click on

settings > set source

then flag the antenna(s) you wish to use



Fig. 4.3: Source selection

Protocol selection

Click on

settings > set source

then flag the protocol you wish to use

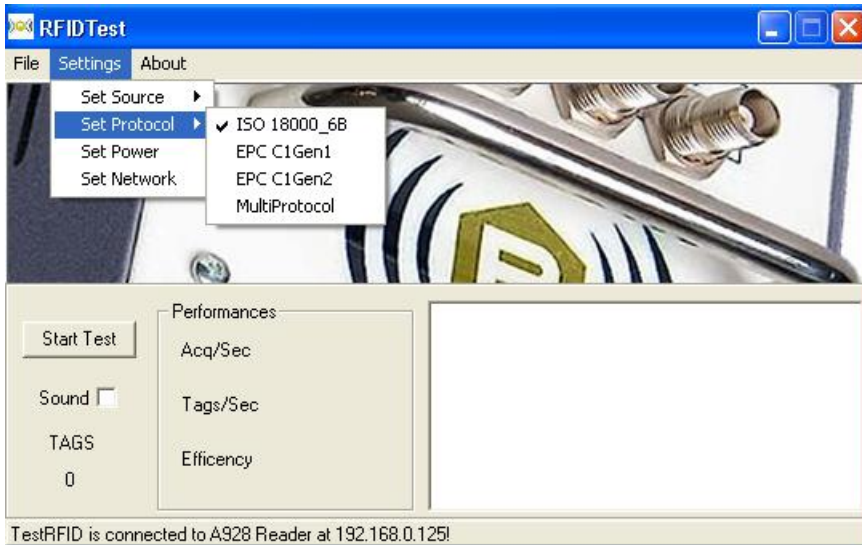


Fig. 4.4: Setting the protocol

Power settings

Click on

settings > set source

then type the power settings you wish to use

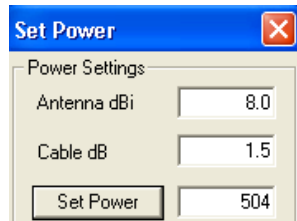


Fig. 4.5: Power settings fields

Reader network configuration

Optionally, it is possible to update the reader's network settings;

click on

settings > set network

The following pop-up window will open (the figure shows the default configuration):

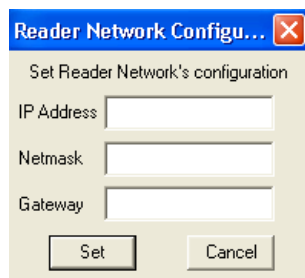


Fig. 4.6: Network configuration

Start Test

Now click on « Start Test »: the name of the tags in the reader's field will be shown. Click on «Stop test» in order to stop acquisition.

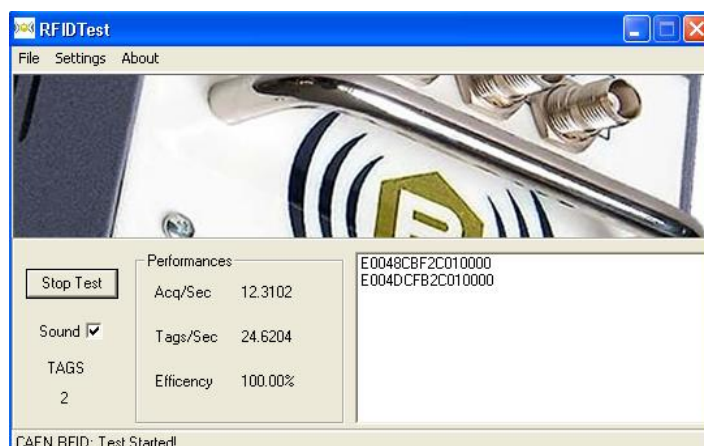


Fig. 4.7: Tags detection



Quit CAEN RFID Test program

For quitting the CAEN RFID Test program click on

File > exit

Then turn off the reader and disconnect the antenna cable, the power cord and the link cable.

5 RFID CsDemo Program



This is a simple RFID .Net Sample program. First of all, go to:

<http://www.microsoft.com/downloads/>

then download and install on your PC the DotNet Framework 1.1

Then go to the main directory CAEN RFID DEMO KIT, then launch the CAENRFIDCsDemo.exe executable file; the following Menu will be launched:

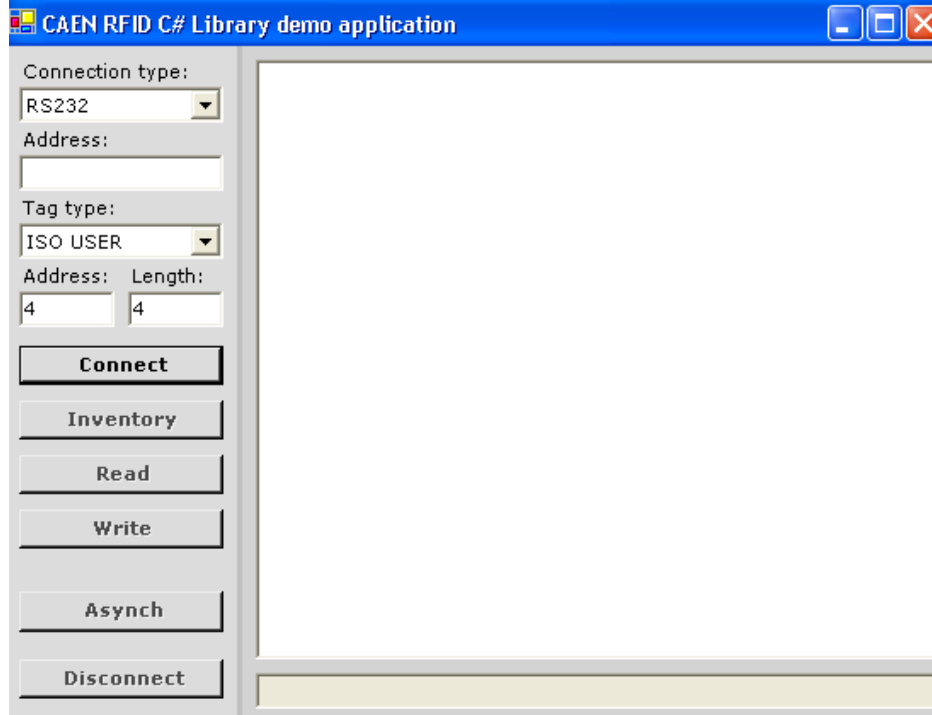


Fig. 5.1: RFID Test main menu

Connection configuration

Once you have connected the CAEN UHF RFID Reader to your PC, turn it ON, then:

Choose the connection type; if you are using TCP-IP enter the IP address (default: 192.168.0.125), if you are using RS232, type the connected port (COM1, COM2...) then click on <Connect>. The following pop-up window will open:

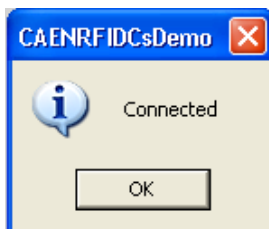


Fig. 5.2: Connection confirmation

Start inventory

Select the tag type you want to read, then click on « Inventory »: the name of the tags in the reader's field will be shown. Click on «Disconnect» in order to stop acquisition.

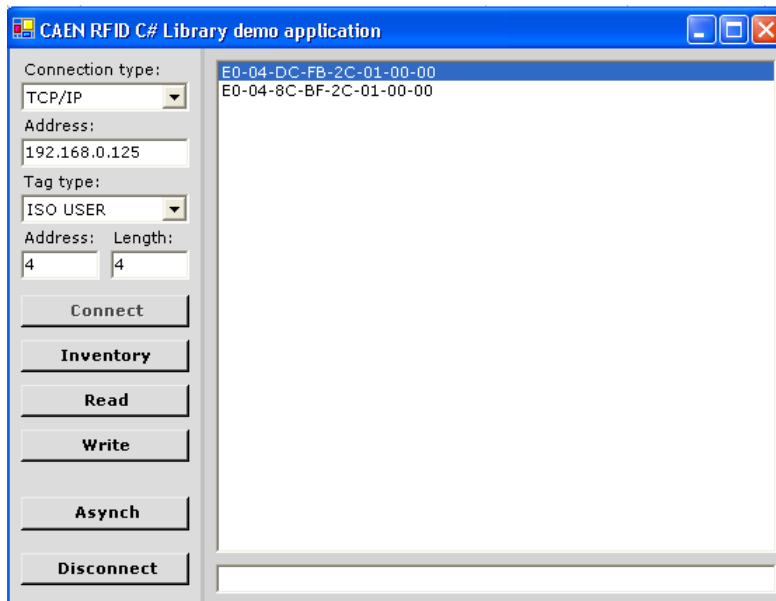


Fig. 5.3: Tags detection

Read tags memory

Select the tag type you want to read, then click on «Read»: the memory content of the tags in the reader's field will be shown.

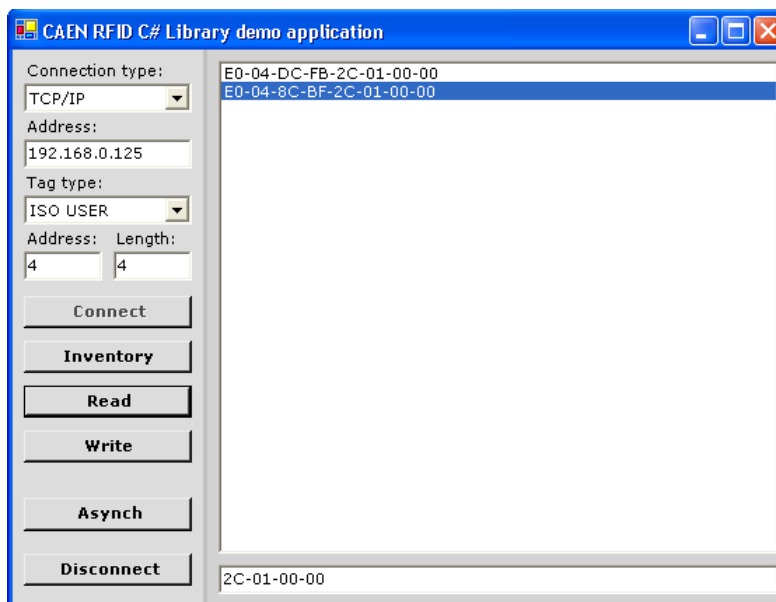


Fig. 5.4: Tags memory readout