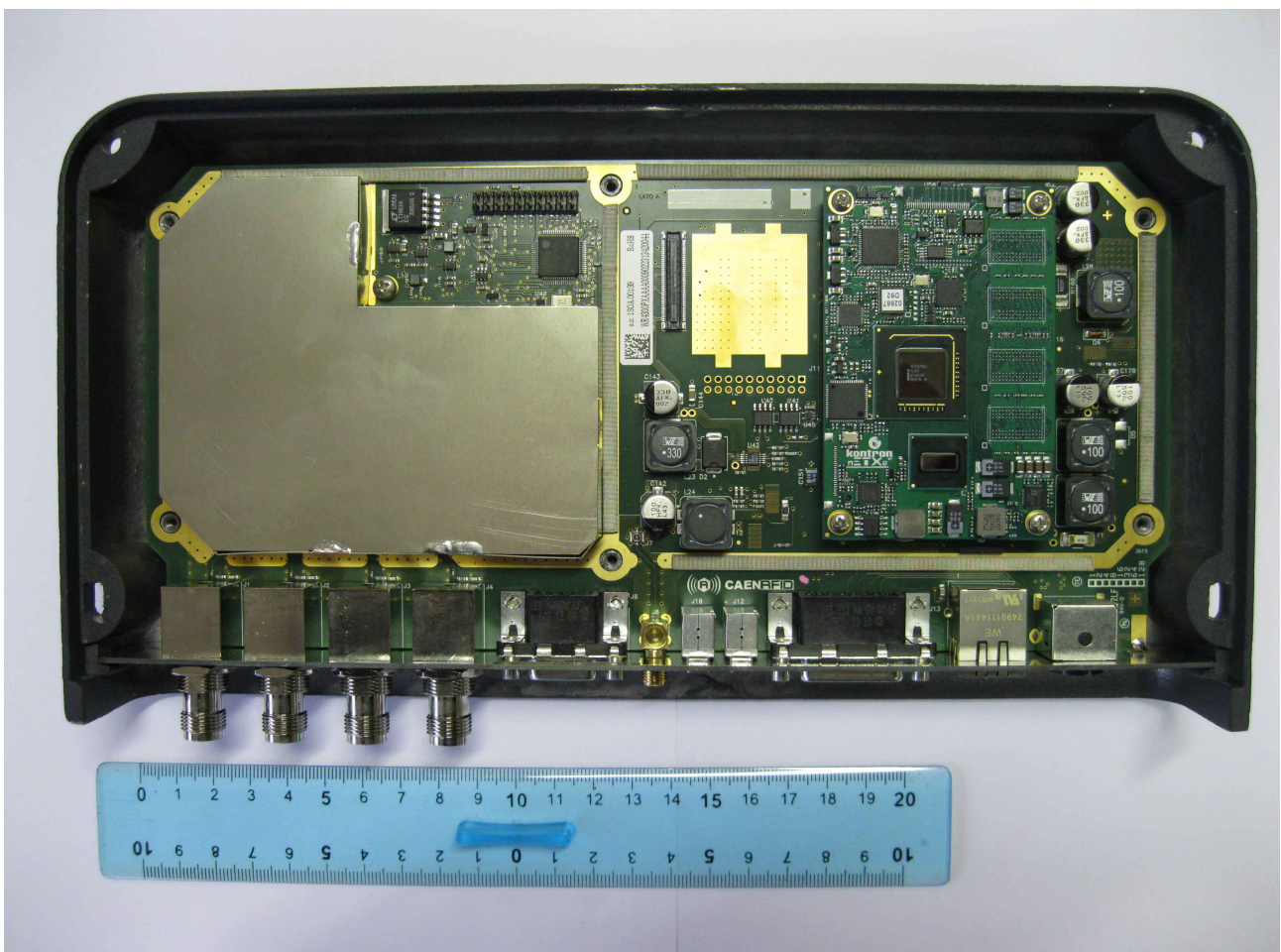


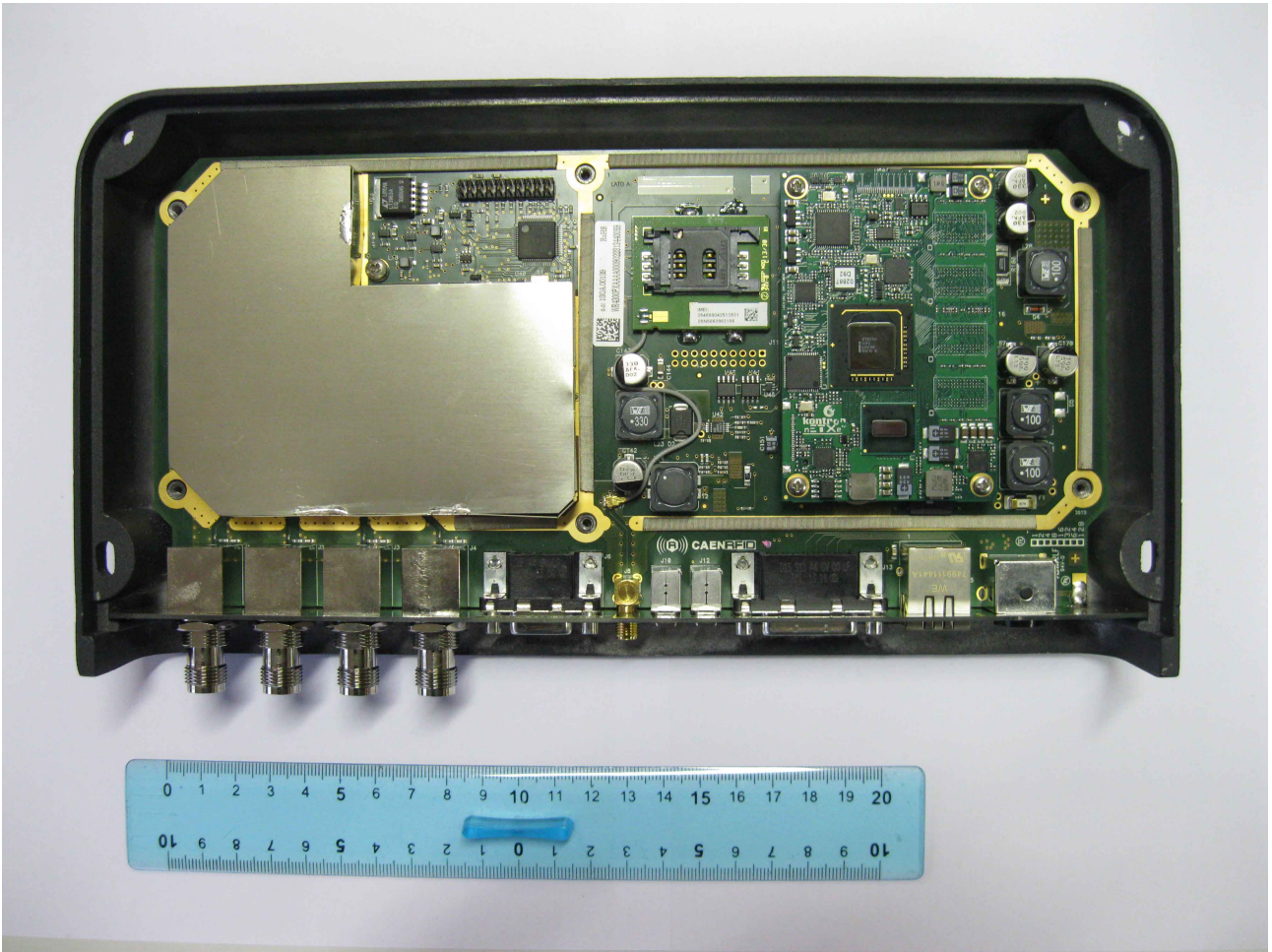
Viareggio January 28th, 2014

Object: Internal Photographs of R4300P - ION - RFID UHF Portal Reader and R4300PXGPRS - ION - RFID UHF Portal reader with GPRS

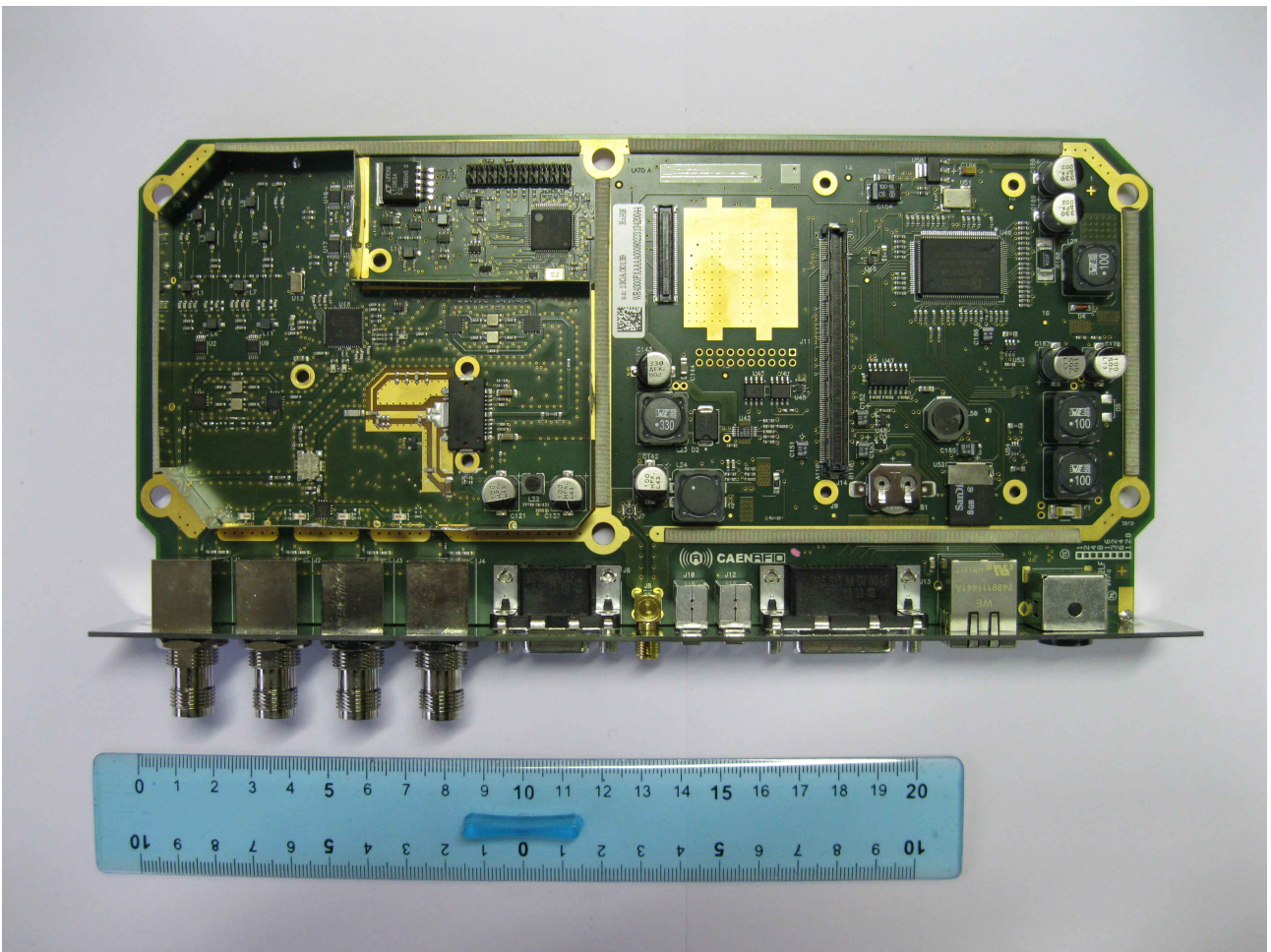
FCC ID: UVECAENRFID008



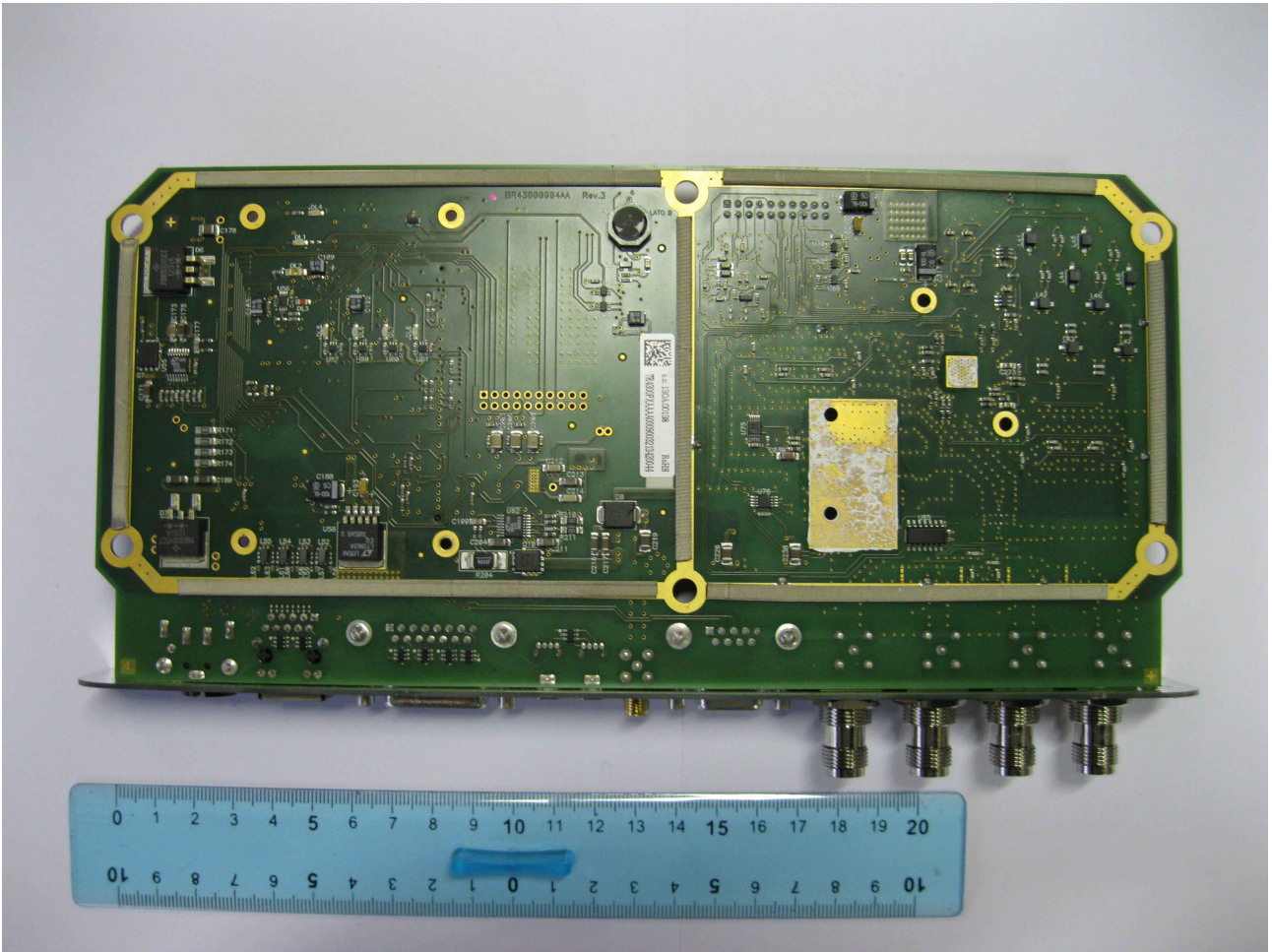
*Fig. 1: R4300P - TOP side*



*Fig. 2: R4300PXGPRS - TOP side*



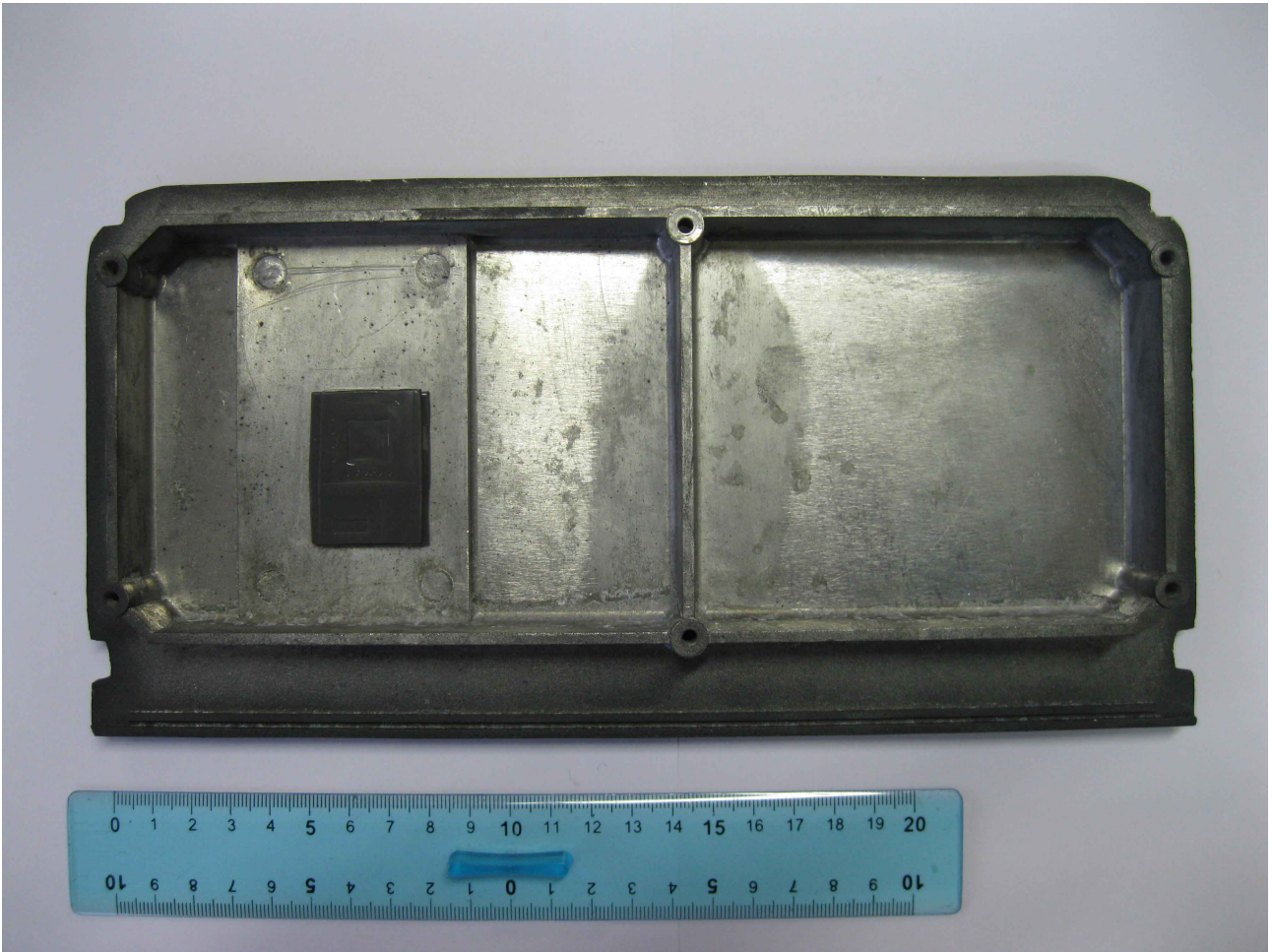
*Fig. 3: Main board - TOP side*



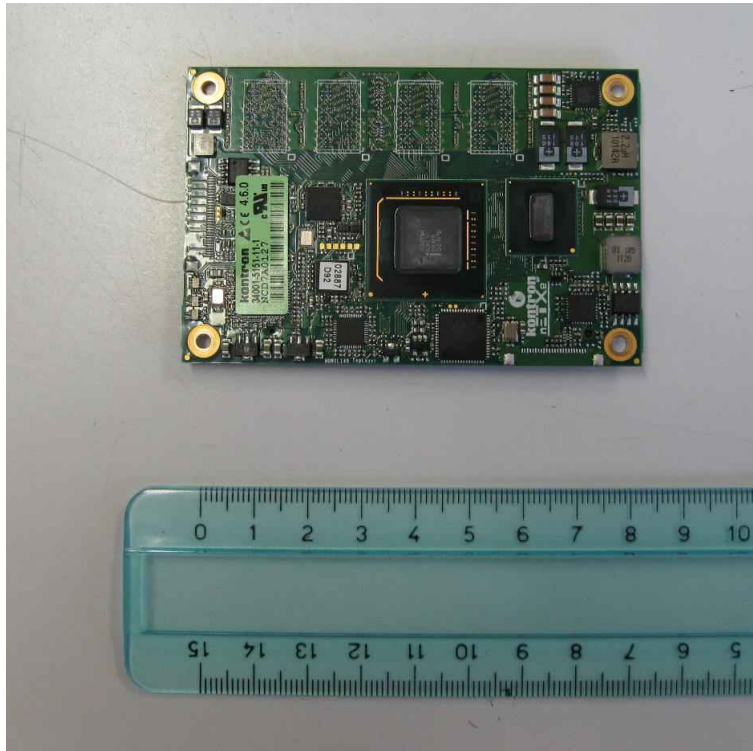
*Fig. 4: Main board - BOTTOM side*



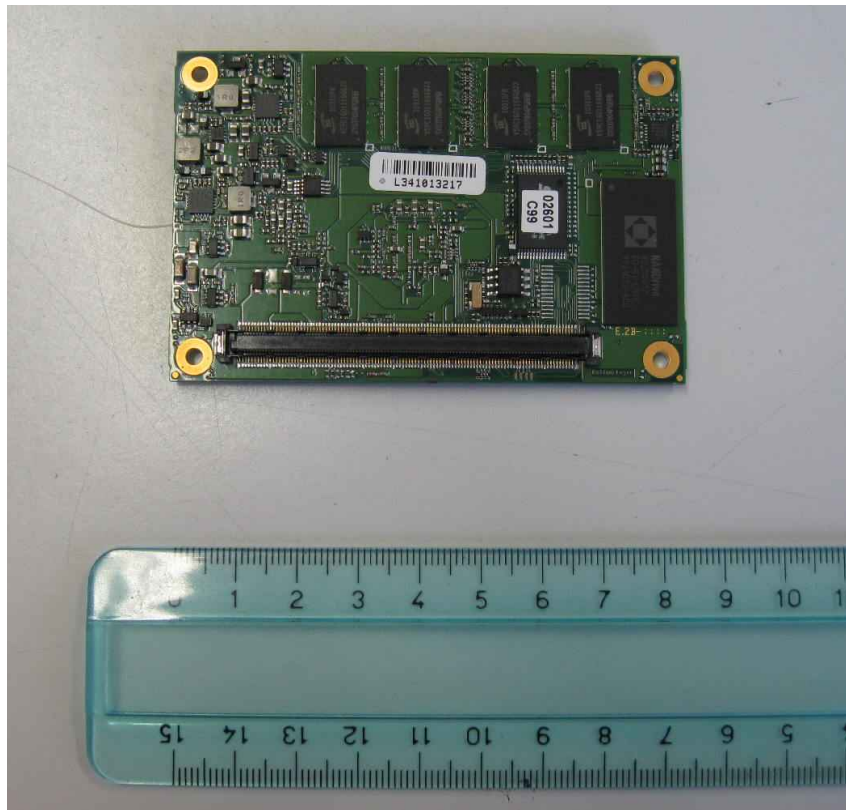
*Fig. 5: Enclosure - TOP side*



*Fig. 6: Enclosure - BOTTOM side*



*Fig. 7: CPU module – TOP side*



*Fig. 8: CPU module - BOTTOM side*

External Photographs of Telit GSM/GPRS module (R17GC864Q2), installed inside R4300PXGPRS only:



*Fig. 9: Telit module - TOP side*



*Fig. 10: Telit module - BOTTOM side*