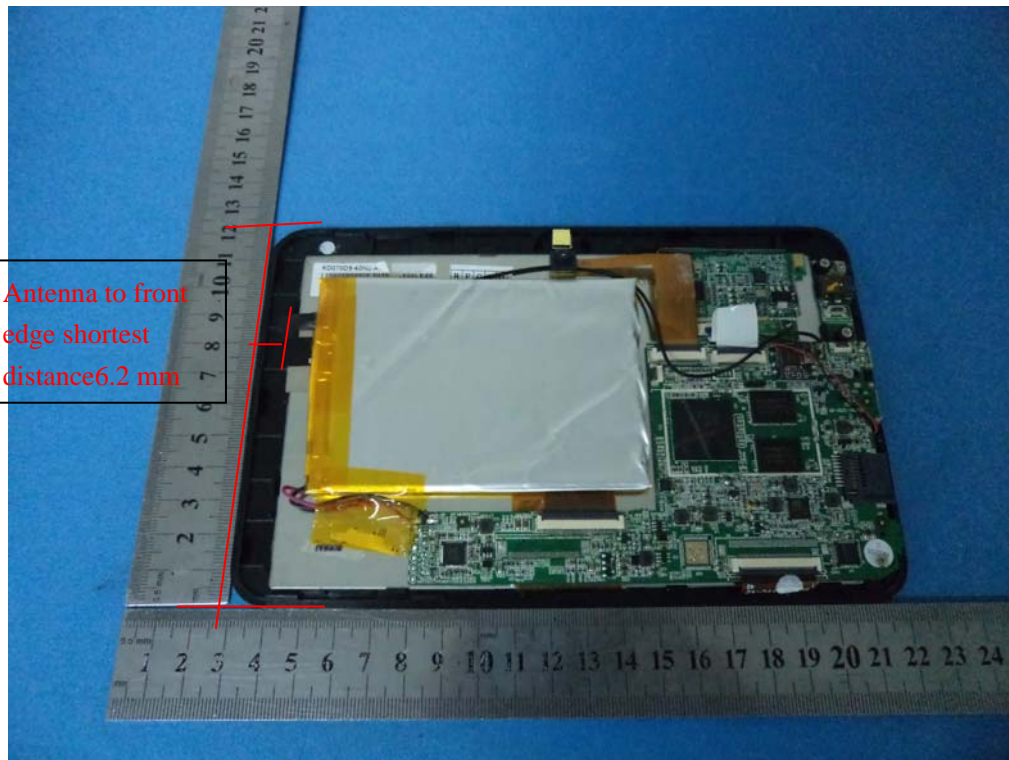
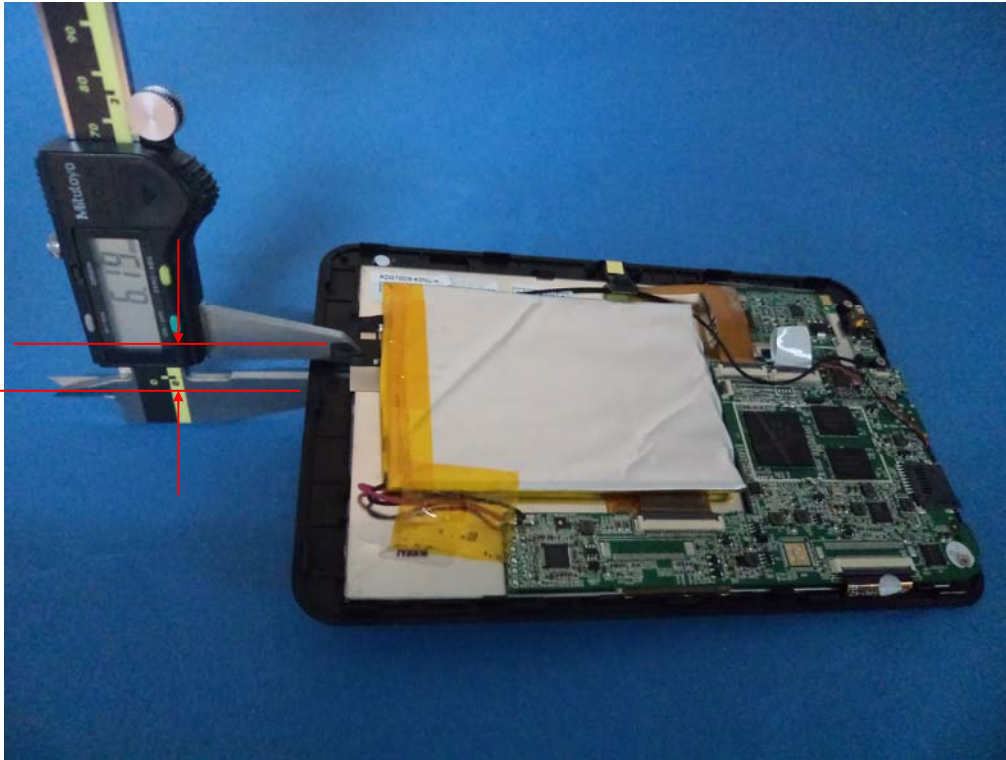


## Supplementary Remarks Photos

Size of the Tablet: 190mm(Length) \* 120mm(Width)\* 13.0mm(thickness)





Antenna to TOP  
edge exact  
shortest distance  
6.19 mm

So Antenna to bottom edge exact shortest distance  $13.13 - 6.19 \text{ mm} = 6.94 \text{ mm}$