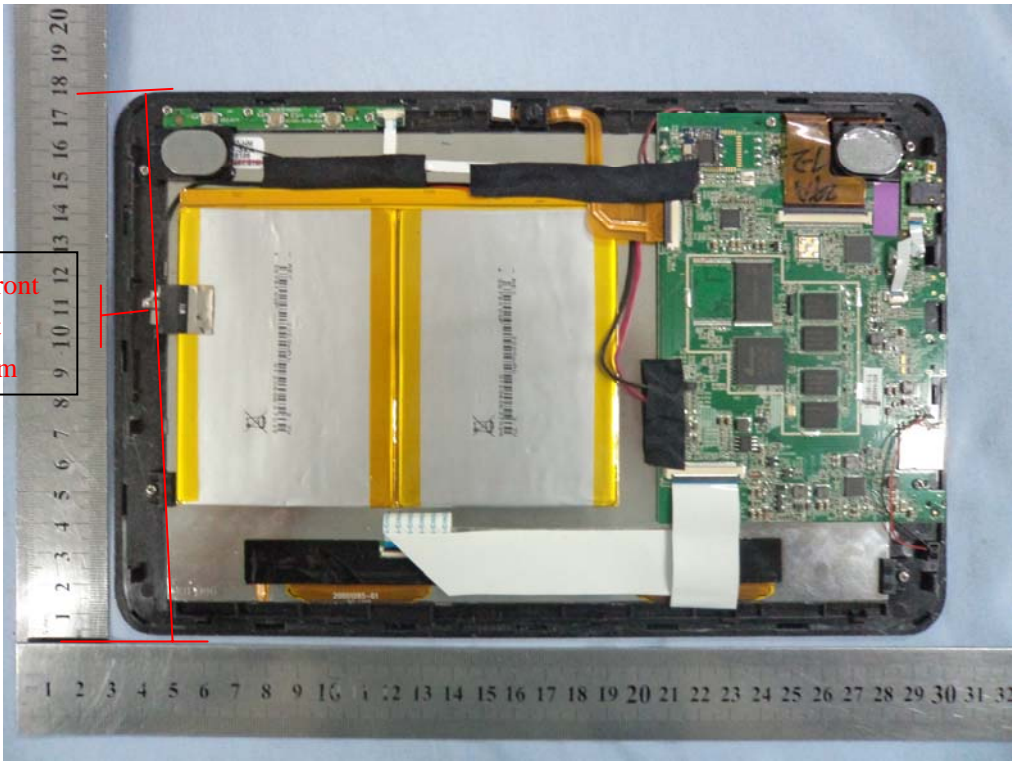


Supplementary Remarks Photos

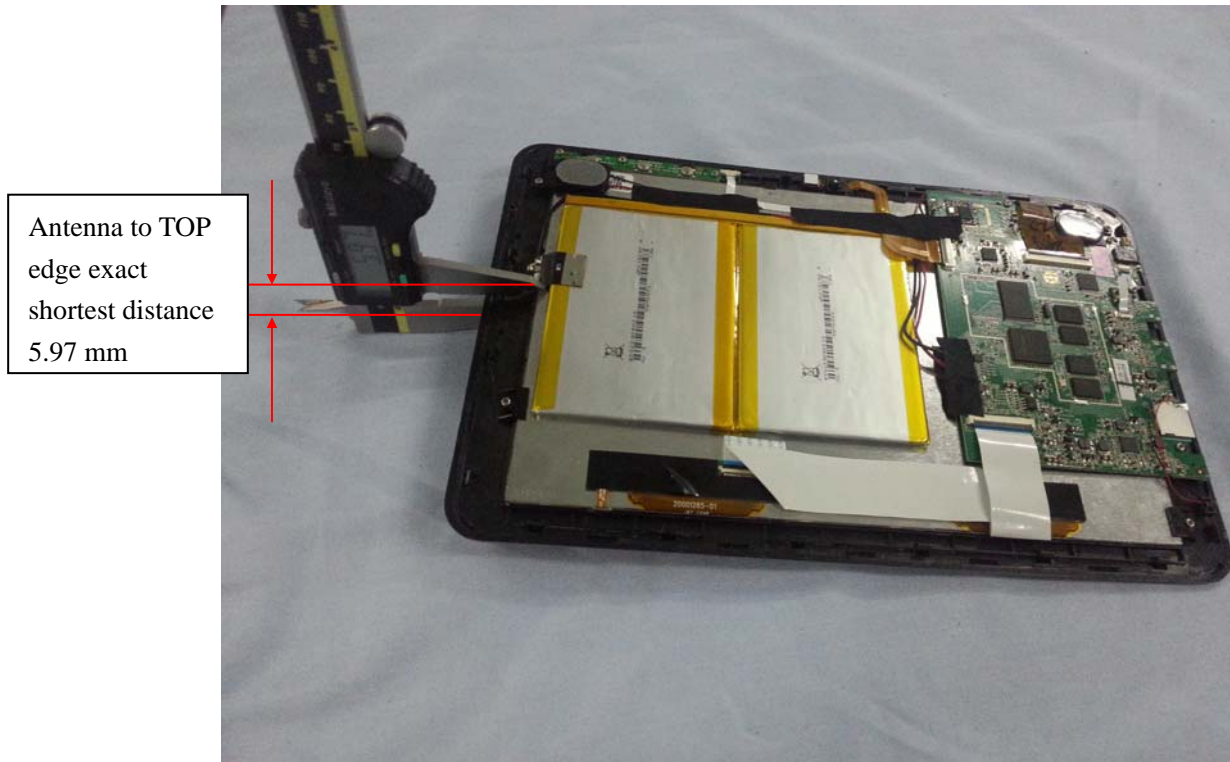
Size of the Tablet: 270mm(Length) * 175mm(Width)* 12.36mm(thickness)

Antenna to front edge shortest distance 8 mm



12.36mm(thickness)





So Antenna to bottom edge exact shortest distance $12.36 - 5.97 \text{ mm} = 6.39 \text{ mm}$