

USER MANUAL

AViTA BLE Module

Model Name: AViTA-BLEM03

Brand: AViTA Corporation

CONTENT

FCC STATEMENT	3
PRODUCT SPECIFICATIONS.....	5
MAIN CHIPSET	5
FUNCTIONAL SPECIFICATIONS	5
PRODUCT PICTURE.....	7
MAC LABEL DRAWING	7
PIN ASSIGNMENT	8
PIN DEFINITION	8
DIMENSION.....	9
MECHANICAL SPECIFICATIONS	10
RECOMMENDED FOOTPRINT DESIGN.....	11

FCC Statement

Federal Communication Commission Interference Statement

This equipment has been tested and found to comply with the limits for a Class B digital device, pursuant to Part 15 of the FCC Rules. These limits are designed to provide reasonable protection against harmful interference in a residential installation. This equipment generates, uses and can radiate radio frequency energy and, if not installed and used in accordance with the instructions, may cause harmful interference to radio communications. However, there is no guarantee that interference will not occur in a particular installation. If this equipment does cause harmful interference to radio or television reception, which can be determined by turning the equipment off and on, the user is encouraged to try to correct the interference by one of the following measures:

- Reorient or relocate the receiving antenna. - Increase the separation between the equipment and receiver.
- Connect the equipment into an outlet on a circuit different from that to which the receiver is connected.
- Consult the dealer or an experienced radio/TV technician for help.

FCC Caution: Any changes or modifications not expressly approved by the party responsible for compliance could void the user's authority to operate this equipment.

This device complies with Part 15 of the FCC Rules. Operation is subject to the following two conditions: (1) This device may not cause harmful interference, and (2) this device must accept any interference received, including interference that may cause undesired operation.

For product available in the USA/Canada market, only channel 1~11 can be operated. Selection of other channels is not possible. This device and its antenna(s) must not be co-located with any other transmitters except in accordance with FCC multi transmitter product procedures. Referring to the multi transmitter policy, multiple transmitter(s) and module(s) can be operated simultaneously without C2PC.

IMPORTANT NOTE: FCC Radiation Exposure Statement: This equipment complies with FCC radiation exposure limits set forth for an uncontrolled environment. This equipment should be installed and operated with minimum distance 20 cm between the radiator & your body.

IMPORTANT NOTE: This module is intended for OEM integrator. The OEM integrator is responsible for the compliance to all the rules that apply to the product into which this certified RF module is integrated. Additional testing and certification may be necessary when multiple modules are used.

20 cm minimum distance has to be able to be maintained between the antenna and the users for the host this module is integrated into. Under such configuration, the FCC radiation exposure limits set forth for an population/uncontrolled environment can be satisfied.

Any changes or modifications not expressly approved by the manufacturer could void the user's authority to operate this equipment.

USERS MANUAL OF THE END PRODUCT:

In the user's manual of the end product, the end user has to be informed to keep at least 20 cm separation with the antenna while this end product is installed and operated. The end user has to be informed that the FCC radio frequency exposure guidelines for an uncontrolled environment can be satisfied. The end user has to also be informed that any changes or modifications not expressly approved by the manufacturer could void the user's authority to operate this equipment. If the size of the end product is smaller than 8x10cm, then additional FCC part 15.19 statement is required to be available in the user's manual: This device complies with Part 15 of FCC rules. Operation is subject to the following two conditions: (1) this device may not cause harmful interference and (2) this device must accept any interference received, including interference that may cause undesired operation.

LABEL OF THE END PRODUCT:

The final end product must be labeled in a visible area with the following " Contains FCC ID: UV3BML-2101. If the size of the end product is larger than 8x10cm, then the following FCC part 15.19 statement has to also be available on the label: This device complies with Part 15 of FCC rules. Operation is subject to the following two conditions: (1) this device may not cause harmful interference and (2) this device must accept any interference received, including interference that may cause undesired operation.

OEM Integrator Checklist

The party below will implement the LITE-ON Module in host systems in accordance with the instructions specified in this document and the documents referenced herein.

- 1.The OEM integrator will ensure the Module is integrated in a host systems using only the approved antenna model(s) described in this document.
- 2.The OEM integrator will ensure the antenna placement inside the host system will maintain the required spacing to end user for RF Exposure compliance, as specified in this document.
- 3.If other radios are integrated inside the host with the LITE-ON Module, the OEM integrator will contact its test lab, TCB or LITE-ON to determine if additional FCC compliance evaluation is required to meet FCC collocation rules.
- 4.The OEM integrator will ensure end user documentation will contain the specified regulatory wording and ensure the host system and the Module itself are labeled as specified in this

document.

5. The OEM integrator will ensure the Module is programmed in the factory with compliant transmit power not exceeding the levels specified in this document. LITE-ON requests that the OEM integrator acknowledge its receipt of this document and the above instructions. You may contact LITE-ON with any questions concerning this document or the responsibilities of the OEM integrator

Product Specifications

MAIN CHIPSET

- Nordic nRF52810

FUNCTIONAL SPECIFICATIONS

2.4 GHz transceiver

- -96 dBm sensitivity in Bluetooth® low energy mode
- Supported data rates: 1 Mbps, 2 Mbps Bluetooth® low energy mode
- -20 to +4 dBm TX power, configurable in 4 dB steps
- On-chip balun (single-ended RF)
- 4.6 mA peak current in TX (0 dBm)
- 4.6 mA peak current in RX
- RSSI (1 dB resolution)

ARM® Cortex®-M4 32-bit processor, 64 MHz

- 144 EEMBC CoreMark® score running from flash memory
- 34.4 µA/MHz running from flash memory
- 32.8 µA/MHz running from RAM
- Serial wire debug (SWD)

Flexible power management

- 1.7 V-3.6 V supply voltage range
- Fast wake-up using 64 MHz internal oscillator
- 0.3 µA at 3 V in System OFF mode, no RAM retention
- 0.5 µA at 3 V in System OFF mode with full 24 kB RAM retention
- 1.5 µA at 3 V in System ON mode, with full 24 kB RAM retention, wake on RTC

192 kB flash and 24 kB RAM

Nordic SoftDevice ready

Support for concurrent multi-protocol

12-bit, 200 ksps ADC - 8 configurable channels with programmable gain

64 level comparator

Temperature sensor

Up to 32 general purpose I/O pins

4-channel pulse width modulator (PWM) unit with EasyDMA

Digital microphone interface (PDM)

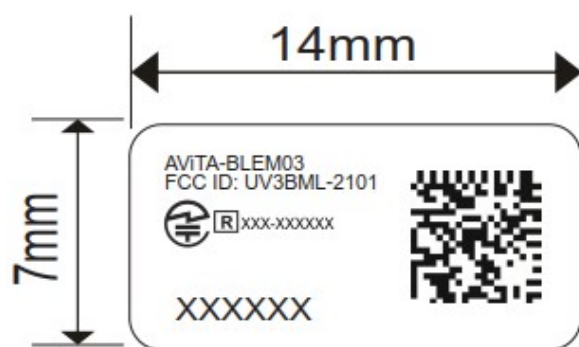
3x 32-bit timer with counter mode

SPI master/slave with EasyDMA
I2C compatible 2-wire master/slave
UART (CTS/RTS) with EasyDMA
Programmable peripheral interconnect (PPI)
Quadrature decoder (QDEC)
AES HW encryption with EasyDMA
2x real-time counter (RTC)
Single crystal operation

PRODUCT PICTURE

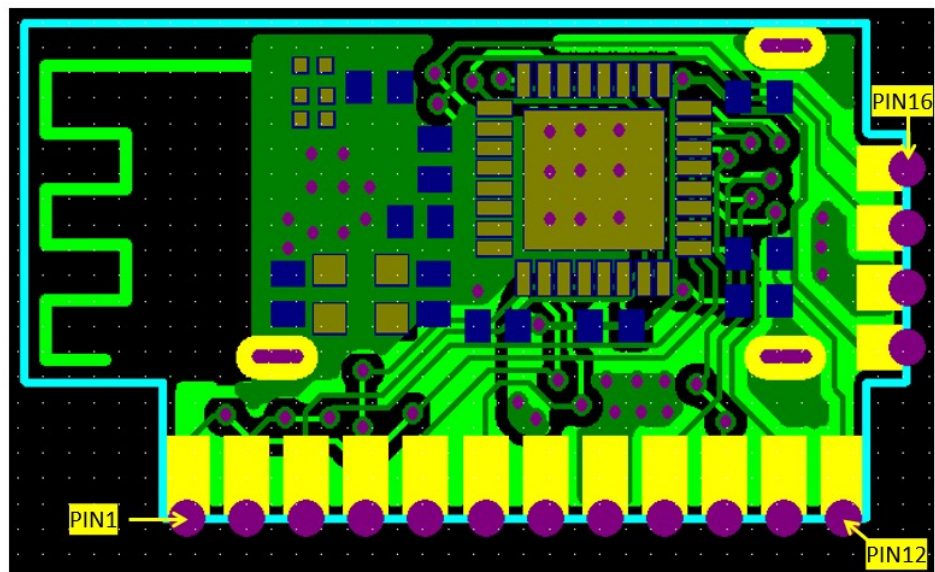
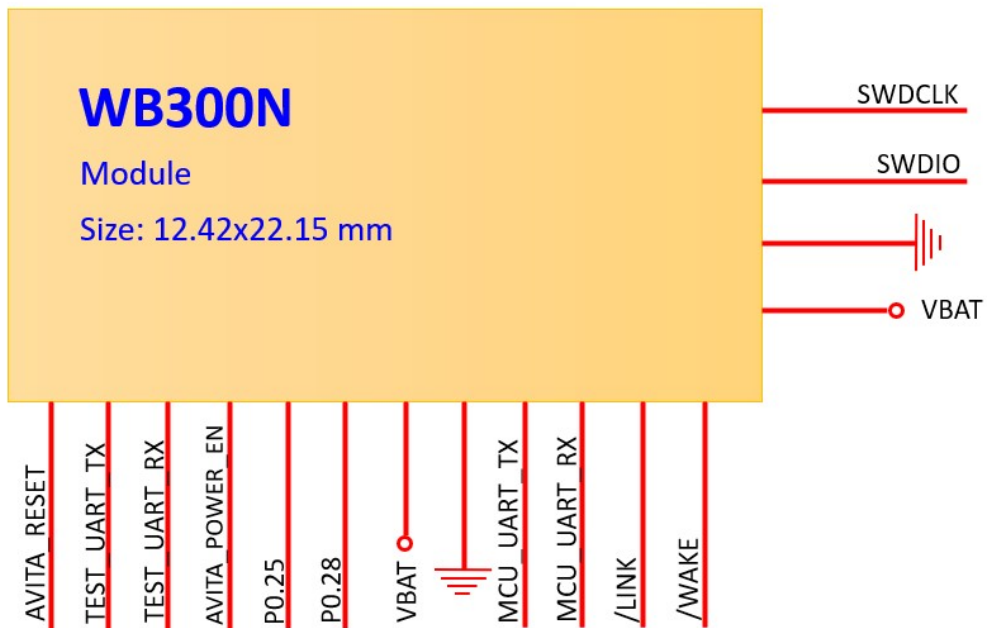


MAC LABEL DRAWING



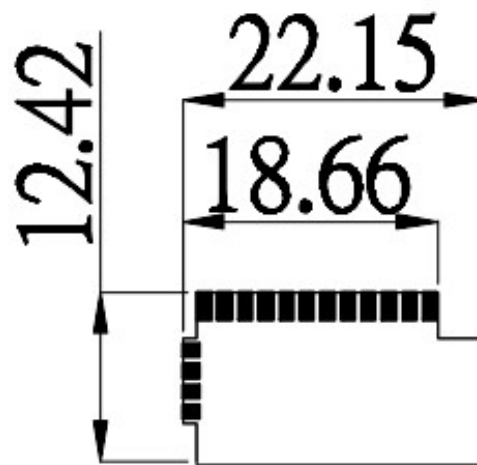
条码為BD ID，使用二维条码ECC 200，尺寸为4*4mm
显示内容为：XXXXXX 此六碼為BD address 末六碼

PIN ASSIGNMENT



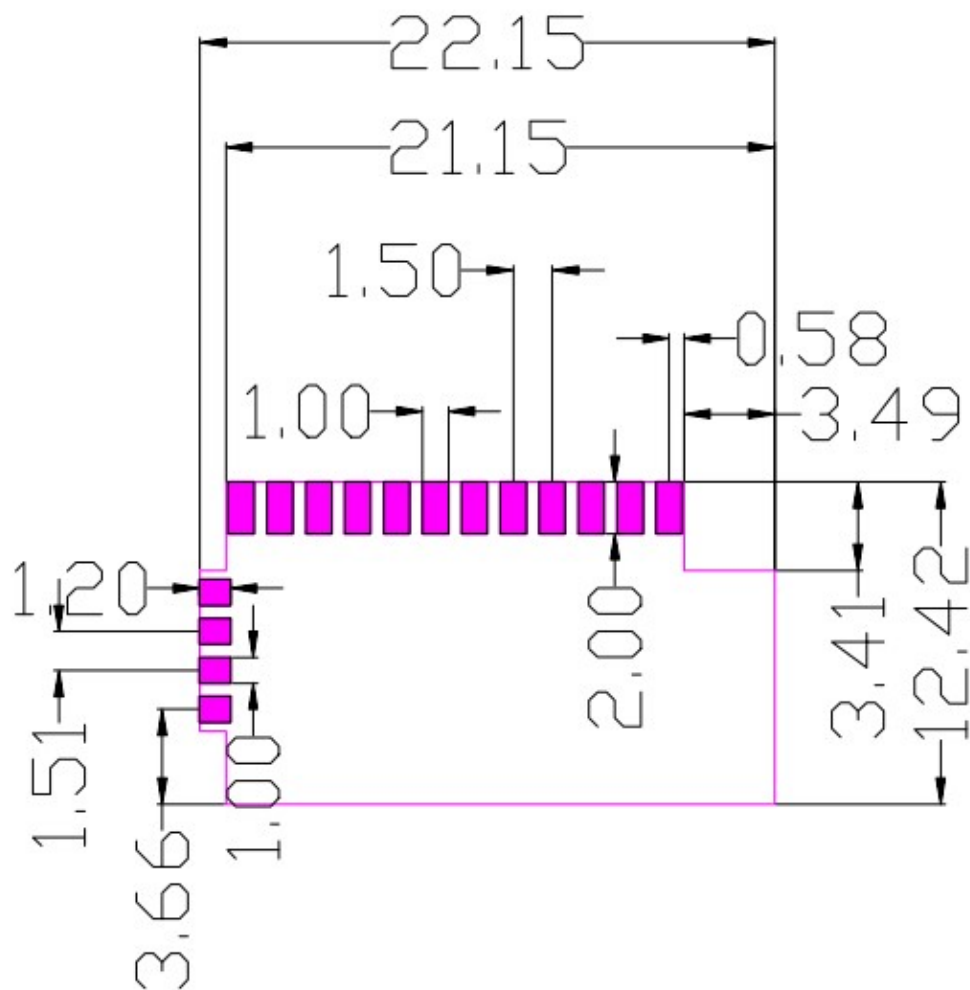
PIN DEFINITION

DIMENSION



MECHANICAL SPECIFICATIONS

Unit: mm



RECOMMENDED FOOTPRINT DESIGN

Unit: mm

