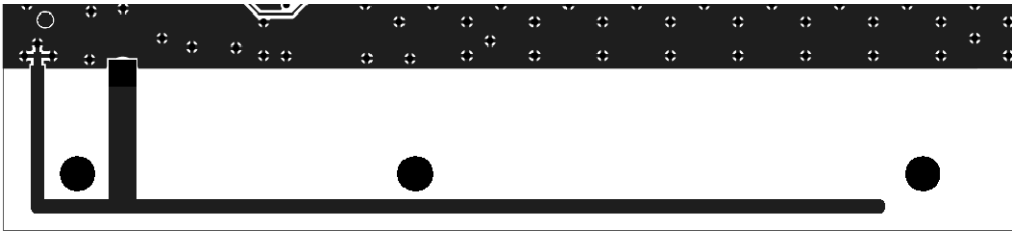


**ViewPoint Access Point Internal Antenna Technical Description:**

1. **Construction:** Quarter Wavelength. Printed board trace.



2. **Type of Antenna:** Inverted-F
3. **Connector Type:** Antenna is permanently connected to both the ground plane and a feed point that has been tuned for a 50 Ohm impedance.
4. **Mounting:** Antenna design is printed directly onto the circuit board.
5. **Gain (dBi):** + 5.4 dBi