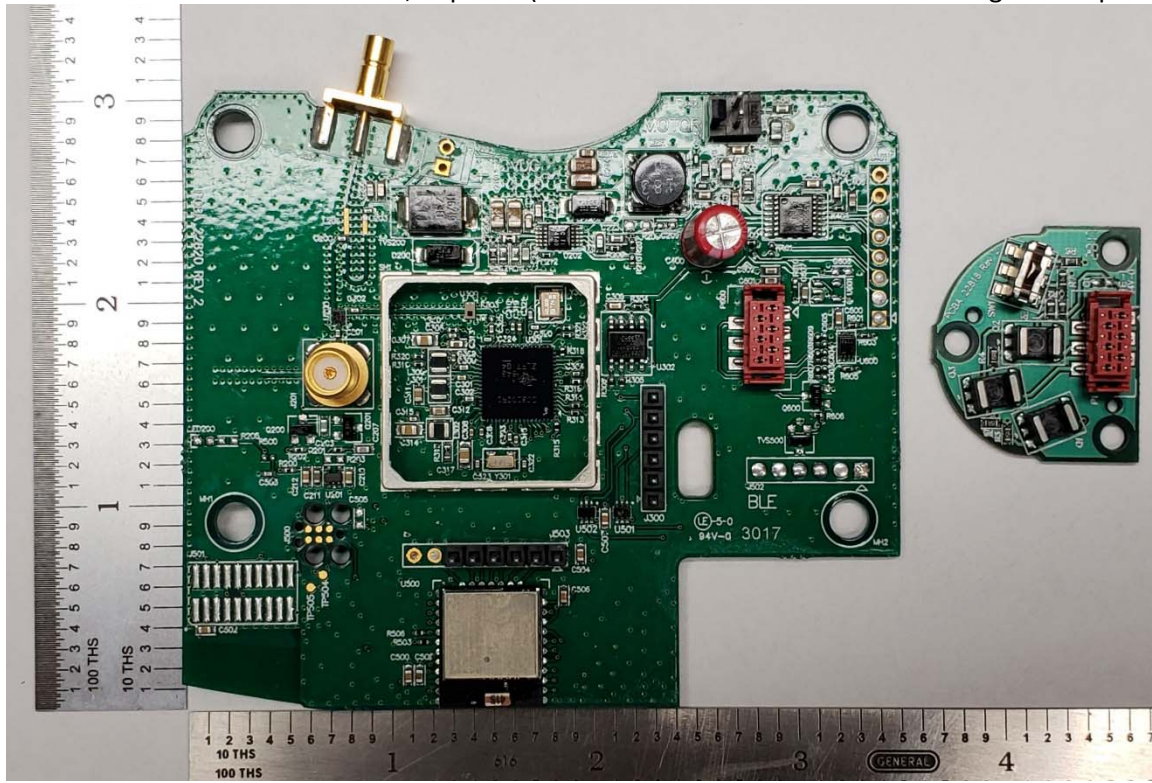
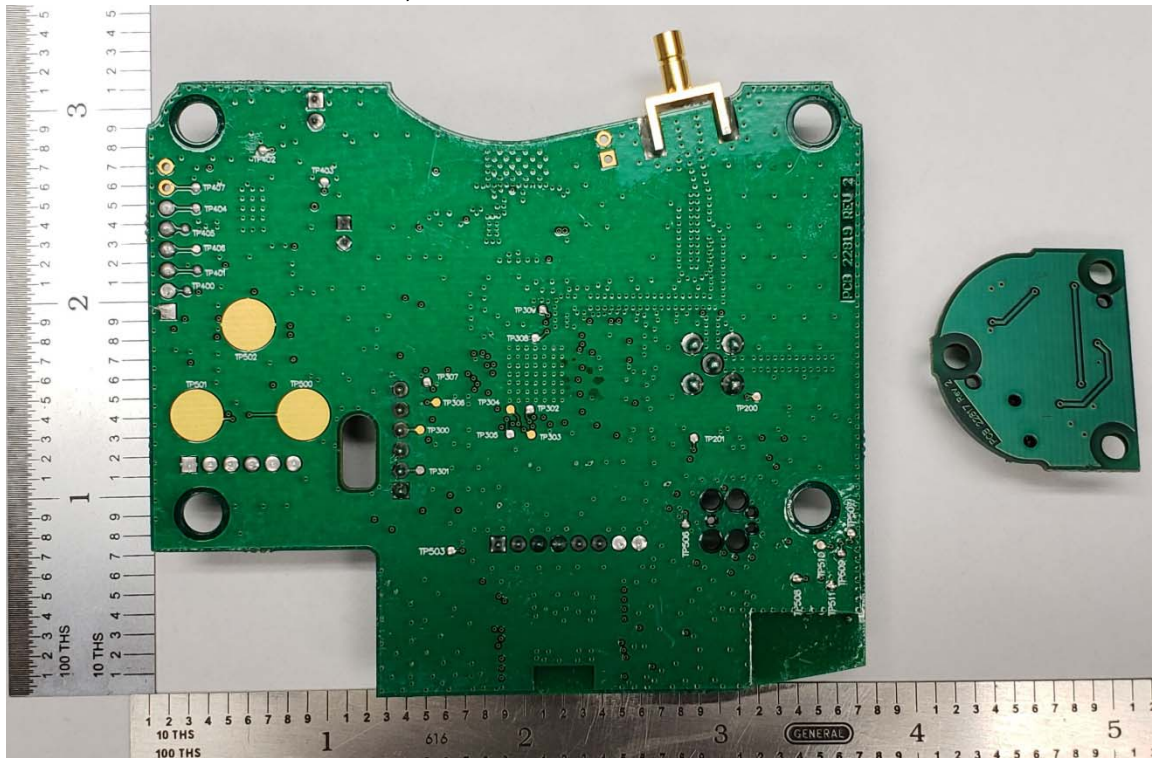


Falcon Antenna (Models KF1000 and KF1001) Internal Photos

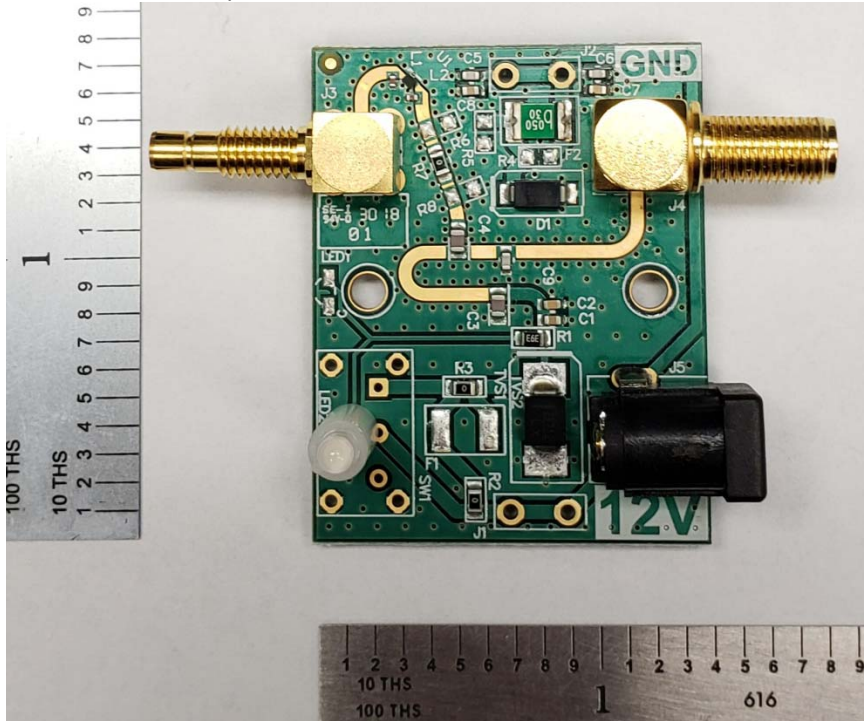
Control Board and Encoder Board, Top Side (Note: Shield lid not installed for testing nor for production.)



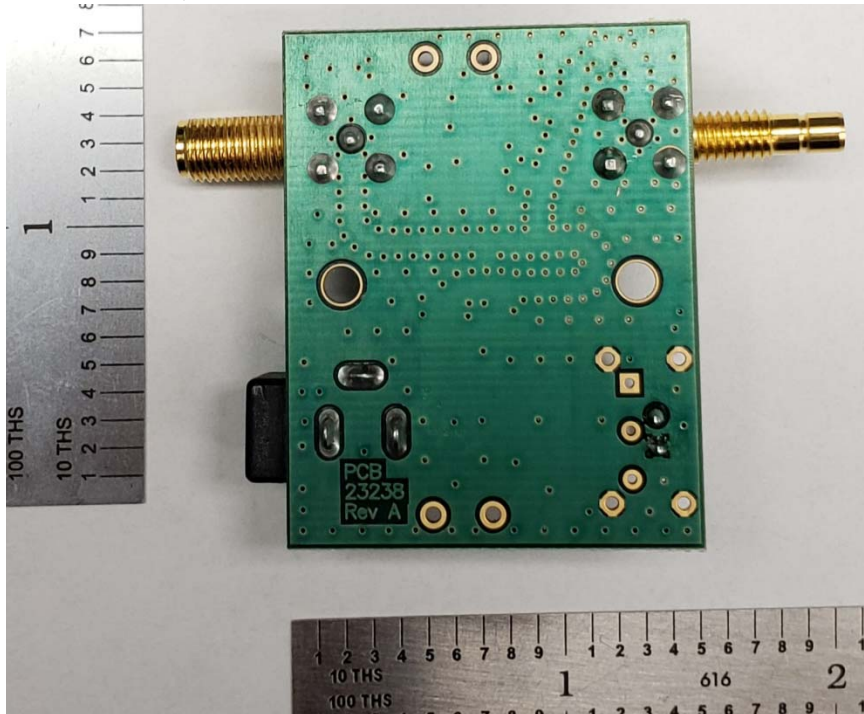
Control Board and Encoder Board, Bottom Side



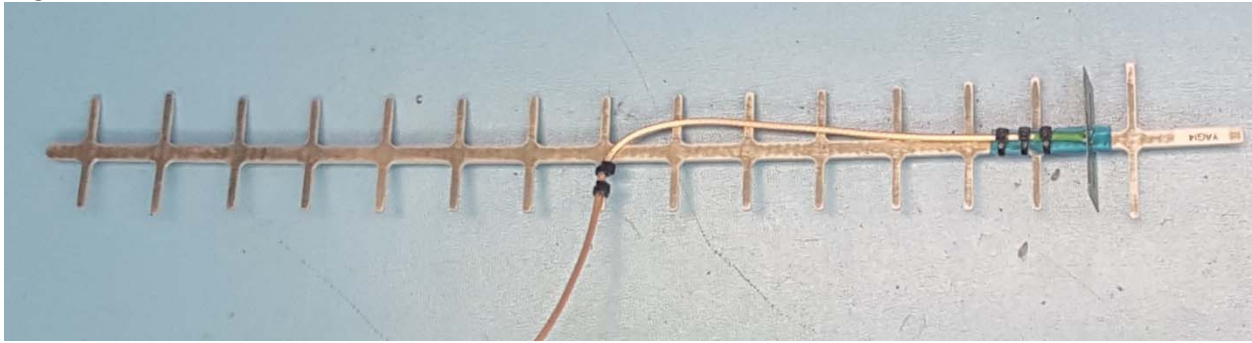
Power Inserter, Top Side



Power Inserter, Bottom Side



Yagi Antenna



Block Diagram

