

深圳市亿圣邦科技有限公司
Shenzhen Yi Sheng Bang technology Co., LTD

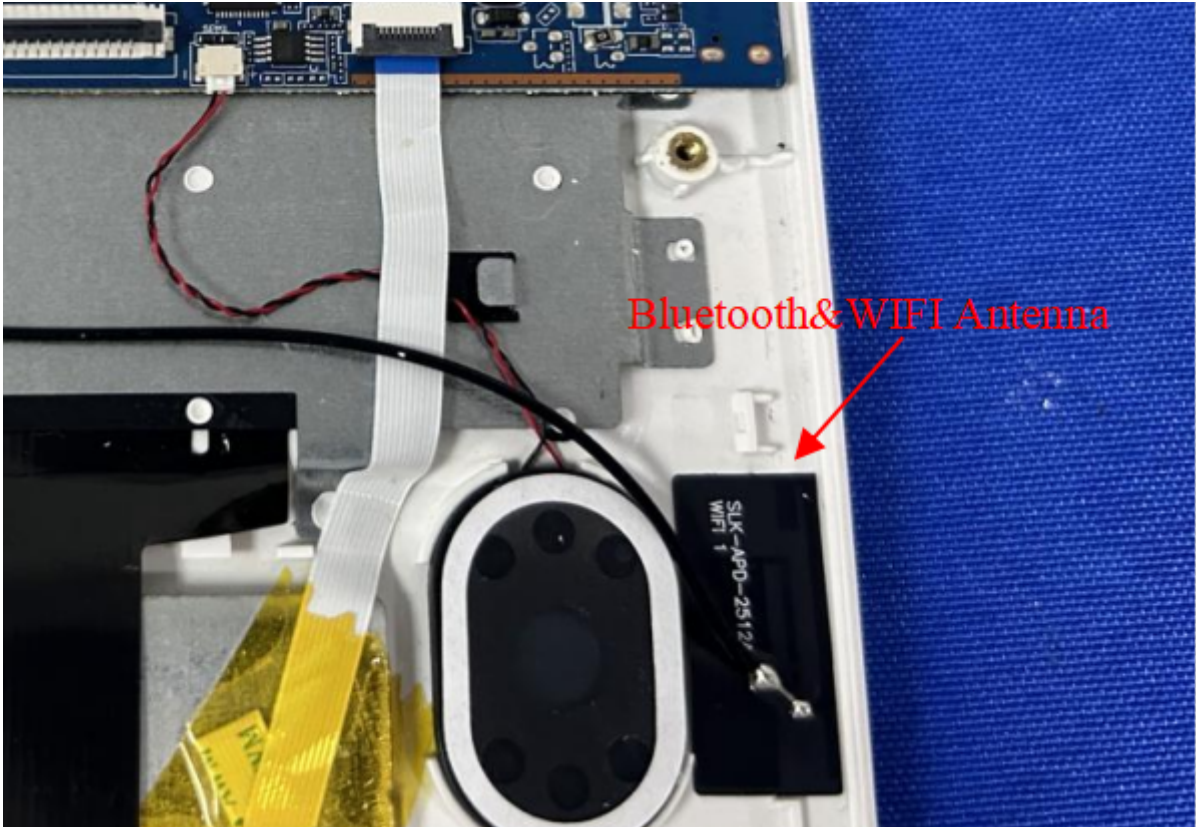
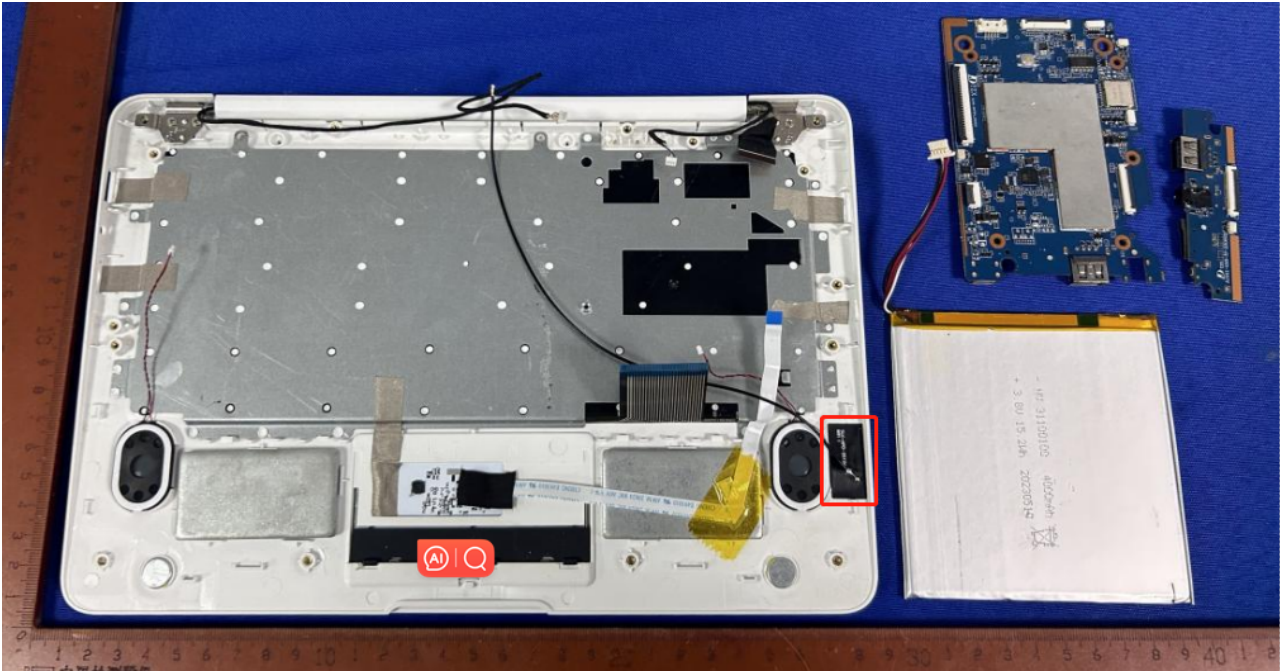
Antenna specification

Model: N1041POBA

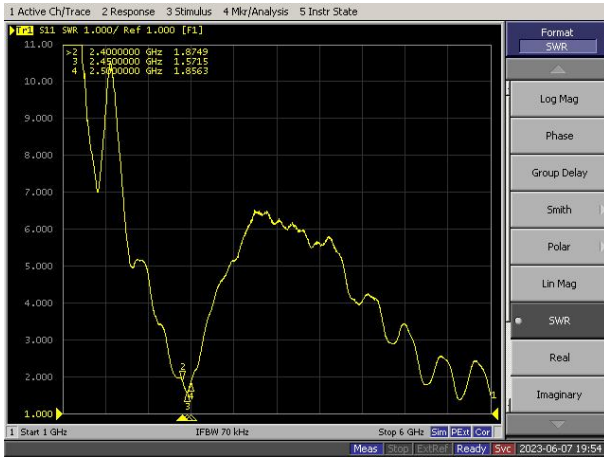
Frequency range: 2400-2500MHz

Antenna gain:

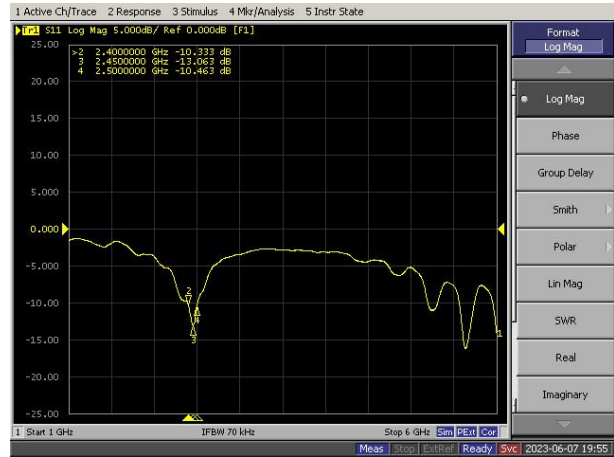
Antenna size picture



VSWR



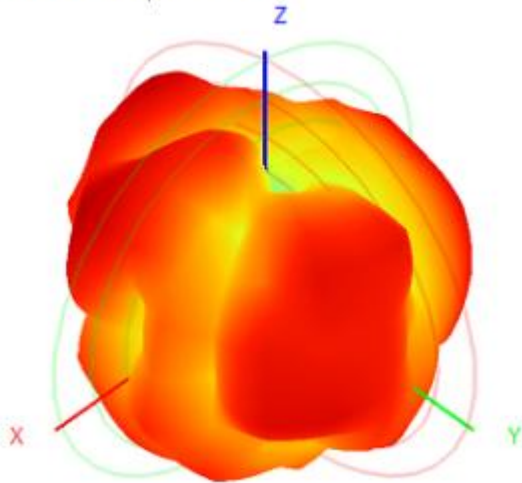
S11



WIFI & Bluetooth Antenna Gain/Efficiency/Radiation Pattern of 3D

Frequency (MHz)	2400.0	2410.0	2420.0	2430.0	2440.0	2450.0	2460.0	2470.0	2480.0	2490.0	2500.0
Efficiency (dBi)	-3.65	-3.54	-3.58	-3.12	-3.10	-3.10	-3.25	-3.30	-3.11	-3.08	-3.34
Gain (dBi)	1.51	1.76	1.86	2.53	2.55	2.61	2.36	2.42	2.55	2.81	2.60
Efficiency (%)	43.13	44.26	43.90	48.79	48.94	48.95	47.35	46.76	48.83	49.22	46.35

2450.0MHz H+V, Eff: 48.9%



Back View

