

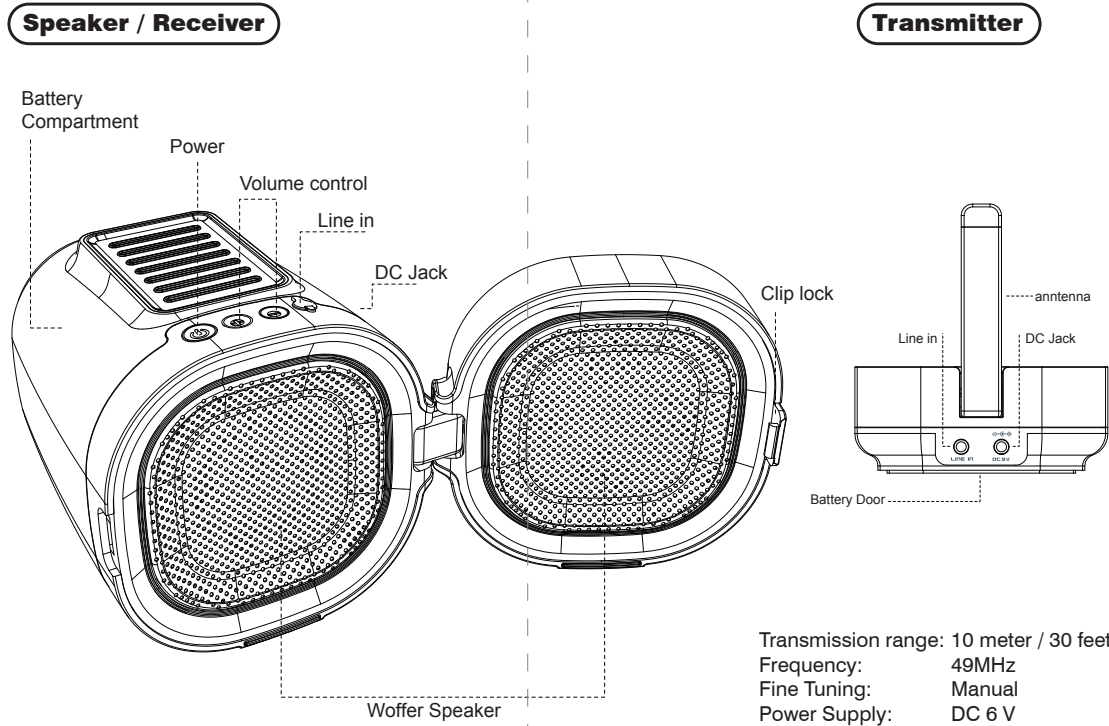
Front



INSTRUCTION MANUAL

Wireless Outdoor Speaker
CEW210 (2.4GHz)

FUNCTIONS



BATTERY INSTALLATION

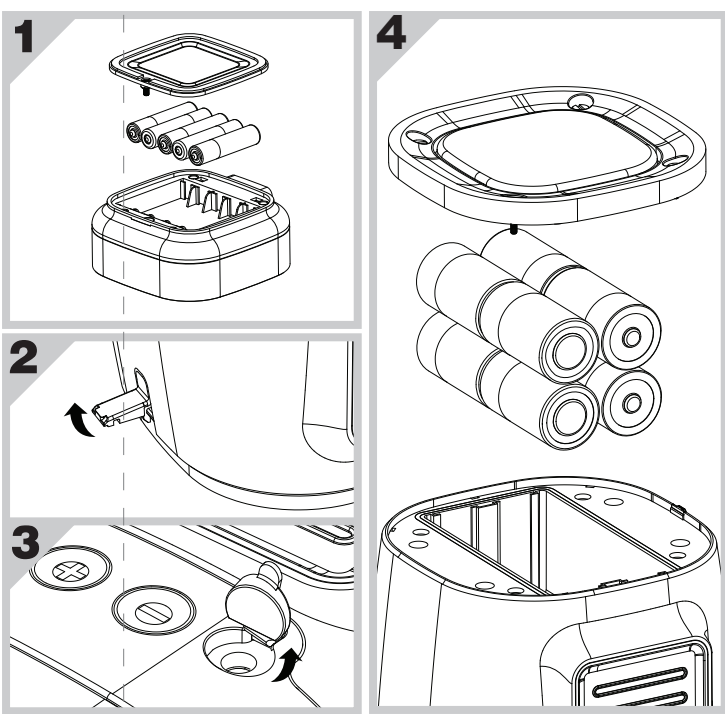
Transmitter
(Diagram 1)
Open battery door out and insert 3 AAA batteries with correct polarity. After batteries are installed, close battery door back into position.

Power Supply:
3-AAA batteries (not included)
DC - 6V

Speaker / Receiver
(Diagram 3)
Unscrew the battery door and insert 8 D-cell batteries with correct polarity. After batteries are installed, close battery door back into position and screw it.

Speaker Unit:
4" woofer speaker,
2 X 1.25" treble speaker

Power Supply:
8 D-cell batteries (not included)
DC 12V
(12V DC jack shown in Diagram 2)



BATTERY SAFETY INFORMATION

- Always:**
- Make sure battery compartments are secure.
 - Use batteries of the correct size and type.
 - Fit batteries correctly observing the plus and minus marks on the battery and compartment.
 - Replace a whole set of batteries at one time.
 - Remove dead batteries from equipment.
 - Remove batteries from appliance that will not be used again for a long time.
 - Please remember that small button cells and AAA batteries should be kept away from young children as they could be easily swallowed. Seek medical advice if you believe a cell has been swallowed.

- Never:**
- Mix different types of batteries.
 - Mix old and new batteries.
 - Dispose of batteries in a fire.
 - Attempt to recharge ordinary batteries.

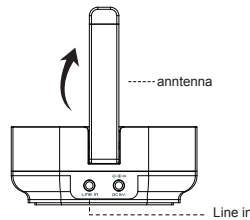
PLEASE RETAIN THIS INFORMATION
FOR FUTURE REFERENCE.



Back

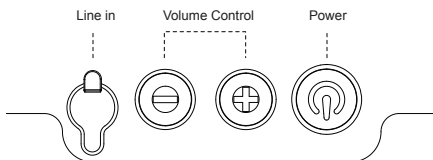
SETTING OPERATION

Transmitter



1. Connect cable from audio device (such as MP3) to line-in Jack at the back of transmitter.
2. Turn on the audio device and adjust the desired volume.
3. Extend the antennae to full length.
4. Slide the on/off switch to "on" position.

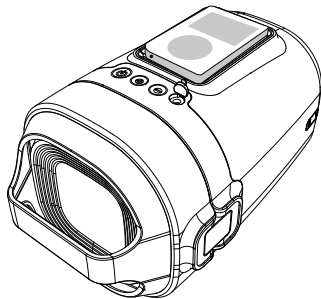
Speaker / Receive
(wireless mode)



1. Press the "Power" button to turn on the speaker. LED light should lit up.
2. Turn the volume dial to adjust the volume level
3. a) Press RESET button once.
b) Press SCAN button to search for wireless audio signal.
c) If static or noise is received from transmitter then press SCAN button again until you get the proper reception.
d) If unsuccessful then press "reset" button and repeat the above steps.
4. The wireless reception will be turned off automatically once the audio cable is plugged into the "Line-in" jack.
5. The wireless reception will be restored once the "Line-in" Jack is unplugged.
6. Press the "Power" button to turn off the unit if it is not in used.

Speaker/ Receiver
(Line-in mode)

To playback music directly without wireless transmission, connect your portable audio devices, such as MP3 or Discman using an audio cable (included) and plug into the "Line-in" jack on the speaker. You can place the portable audio devices in the location as illustrated below.



Remark:
With speaker unit being connected with external audio device (s) – any vigorous movement may cause potential damage of your portable audio device by accidentally falling off from the speaker unit. Removal of external audio device before relocating the speaker unit is recommended.

NOTES

Avoiding interference
The speaker system may use the same radio frequencies as other devise in your home such as microwave ovens, 2.4GHz cordless phones and 2.4GHz Wifi networks. It may cause potential inference and affect the quality of reception. If you experience static noise in your playback, change the channel as needed by press the "channel" button on the transmitter. If the interference persists, try moving the other devices away from the transmitter or relocate the transmitter.

- Warning**
- Do not try to disassemble the speaker
 - Change or modifications to this units not expressly approved by the party responsible for compliance could avoid the user's authority to operate the equipment.
 - Do not place speaker near heat sources such as radiators and heating vents.
 - Turn the transmitter and speaker power off when not in used.

Care and maintenance
Cleaning the Speaker and transmitter – Wipe with the damp cloth with do not use a abrasive chemical

FCC information
The users manual or instruction manual for an intentional or unintentional radiator shall caution the user that changes or modifications not expressly approved by the party responsible for compliance could void the user's authority to operate the equipment.

NOTE: The manufacturer is not responsible for any radio or TV interference caused by unauthorized modifications to this equipment. Such modifications could void the User's authority to operate the equipment.