

THE SHARPER IMAGE

Wireless Indoor / Outdoor Speaker  
CEW112 (49MHz)

INSTRUCTION

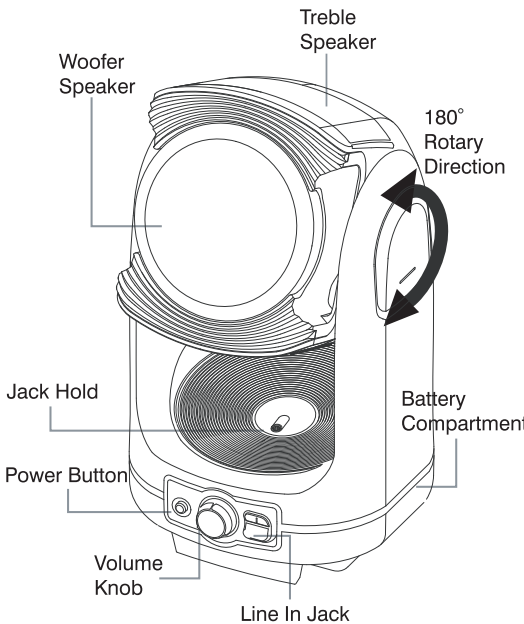


Wireless  
Outdoor  
Speaker

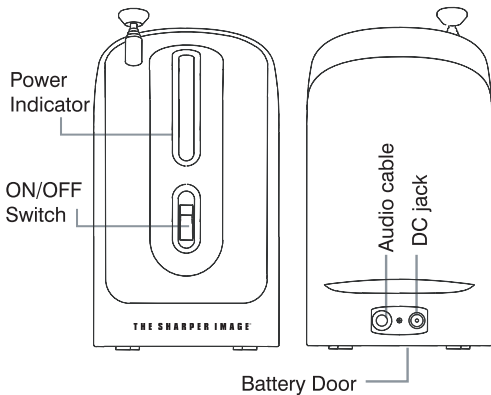


FUNCTIONS

Speaker / Receiver



Transmitter



Transmission range: Max. up to 30 meters  
Frequency: 49MHz  
Power Supply: DC 9 V

BATTERY INSTALLATION

Transmitter

(Diagram 1)  
Open battery door out and insert 6 AAA batteries with correct polarity. After batteries are installed, close battery door back into position.

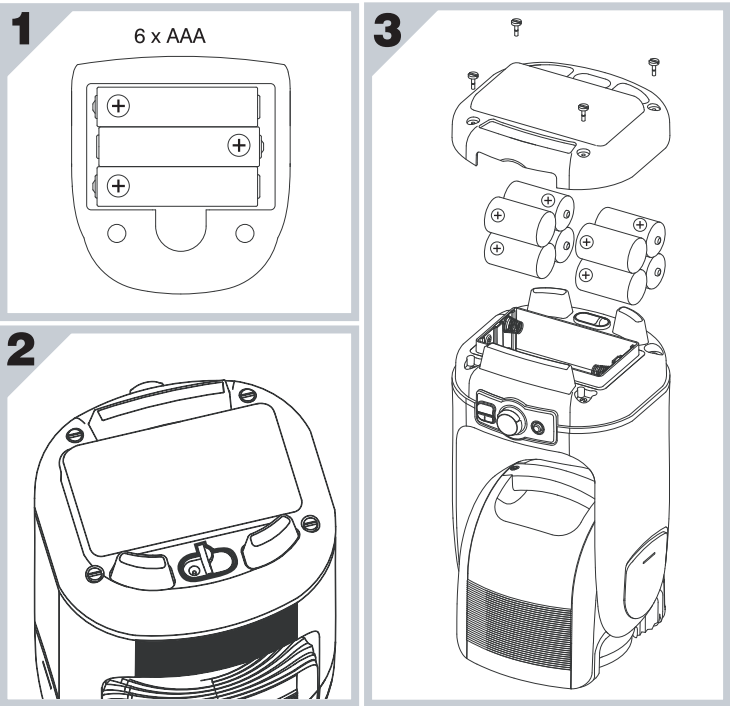
Power Supply:  
6-AAA batteries (not included)  
DC - 9V adaptor included

Speaker / Receiver

(Diagram 3)  
Turn the speaker head as illustrated to obtain a flat base. Unscrew the battery door and insert 8 D-cell batteries with correct polarity. After batteries are installed, close battery door back into position and tighten screw.

Speaker Unit:  
4" woofer speaker,  
2 X 1.25" treble speaker

Power Supply:  
8 D-cell batteries (not included)  
DC 12V adaptor included  
(12V DC jack shown in Diagram 2)



BATTERY SAFETY INFORMATION

BATTERY WARNING:

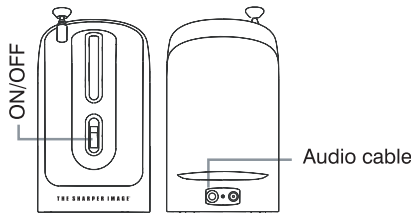
- Do not mix alkaline, standard (carbon-zinc) and rechargeable batteries (nickel hydride).
- Do not mix old and new batteries.
- Non-rechargeable batteries are not to be recharged.
- Rechargeable batteries are to be removed from the unit before being charged (if removable).
- Rechargeable batteries are only to be charged under adult supervision (if removable).
- Exhausted batteries are to be removed.
- The supply terminals are not to be short-circuited.
- Only batteries of the same or equivalent type as recommended are to be used.
- Batteries are to be inserted with the correct polarity (see diagram).

KEEP THIS PACKAGE FOR REFERENCE AS IT CONTAINS IMPORTANT INFORMATION.

MADE IN CHINA

SETTING OPERATION

Transmitter



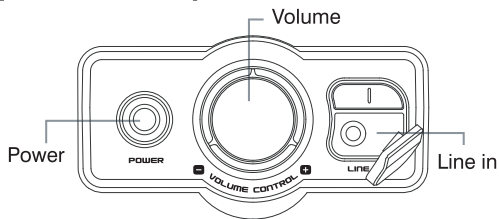
1. Connect audio device (such as MP3 player) to audio cable of transmitter.
2. Turn on the audio device and adjust the desired volume.
3. Extend the antennae to full length.

Notes for transmission/reception quality

If the reception of the speaker is poor, resulting in noise, it may be caused by interference with other devices or by physical obstructions (i.e. walls). Please relocate the transmitter and try again. The max. 30 meters transmission range is based on unobstructed path of reception.

The reception quality is also affected by the battery level. Replace old batteries for both the transmitter and receiver unit. Ensure the batteries are in good condition before use. If the transmission range drops dramatically, it is time to replace the batteries.

Speaker / Receiver  
(wireless mode)



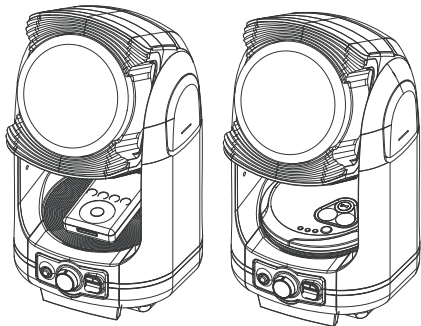
1. Turn the volume to minimum level before switching on the speaker.
2. Press the "Power" button to turn on the speaker. LED light should lit up.
3. Turn the volume dial to adjust the volume level
4. The wireless reception will be turned off automatically once the audio cable is plugged into the "Line-in" jack.
5. The wireless reception will be restored once the "Line-in" Jack is unplugged.
6. Press the "Power" button to turn off the unit if it is not in used.

Remark:

In case the speaker powered ON with transmitter powered OFF, the speaker will generate a loud noise for reminding the user to switch off the speaker.

Speaker/ Receiver  
(Line-in mode)

To playback music directly without wireless transmission, connect your portable audio devices, such as MP3 or Discman using an audio cable (included) and plug into the "Line-in" jack on the speaker. You can place the portable audio devices in the location as illustrated below.



Remark:

With speaker unit being connected with external audio device (s) – any vigorous movement may cause potential damage of your portable audio device by accidentally falling off from the speaker unit. Removal of external audio device before relocating the speaker unit is recommended.

NOTES

Avoiding interference

Make sure that the transmitter or the speaker is not shielded by metal object such as steel-reinforced concrete walls, metal-coated mirrors, metal furniture etc. There should not be any system with strong electrical fields near the transmitter or speaker such as cordless telephones, radio, and electric motors. The radio transmission could be disturbed or the range reduced considerably.

Warning

- Do not try to disassemble the speaker
- Change or modifications to this units not expressly approved by the party responsible for compliance could avoid the user's authority to operate the equipment.
- Do not place speaker near heat sources such as radiators and heating vents.
- Turn the transmitter and speaker power off when not in used.

Care and maintenance

Cleaning the Speaker and transmitter – Wipe with the damp cloth with do not use a abrasive chemical Ensure a minimum distance of 5 cm around the apparatus for sufficient ventilation.



FCC information

This equipment has been tested and found to comply with the limits for the class B digital device, pursuant to part 15 of the FCC Rules. These limits are designed to provide reasonable protection against harmful interference in a residential installation. This equipment generates, uses, and can radiate radio frequency energy and, if not installed and used in accordance with the instructions, may cause harmful interference to radio communications. However, there is no guarantee that interference will not occur in a particular installation.

If this equipment does cause harmful interference to radio or television reception, which can be determined by turning the equipment off and on, the user is encouraged to try to correct the interference by one or more of the following measures:

- Reorient or relocate the receiving antenna
- Increase the distance between the equipment and receiver
- Connect the equipment to an outlet on a circuit different from which the receiver is connected
- Consult the dealer or an experienced Radio/TV technician for help.

1. This equipment may not cause harmful interference.
2. This equipment must accept any interference received, including interference that may cause undesired operation.
3. Changes or modifications not expressly approved by the party responsible for compliance could void the user's authority to operate the equipment.

**Note:** The manufacturer is not responsible for any audio or television interference caused by unauthorized modifications to this equipment. Such modifications could void the user's authority to operate the equipment.

For technical support  
visit [www.msccustomercaare.com](http://www.msccustomercaare.com) or call 1-800-374-2744.

The Sharper Image name and logo are registered trademarks of Sharper Image Corporation used under license by MerchSource LLC.  
Manufactured by MerchSource LLC.

©2008 MerchSource, LLC. All Rights Reserved.  
Distributed by MerchSource, LLC., Foothill Ranch, CA 92610

The artwork and design of this package are protected by US copyright law and may not be reproduced, distributed, displayed, published or used for any purpose without prior written permission. It is not permitted to alter, remove or reproduce any trademarks or copyright notice from this package.

China Patent  
200830049167.2  
Printed in China