

F C C - TEST REPORT

REPORT NO.: 50544-2

FCC – Test Report**No. 50544-2**Date: 2008-08-18

Page 2 of 12

**FCC listed testlab
acc. to Section 2.948 of the FCC - Rules****in compliance with the requirements of
ANSI C63.4 - 2003**

Product : Wireless Headphone

Product Class : Low Power Communication
Device Receiver (Super
Hetrodyne)

Brand Name : -

Model : CEW100

Applicant : FORMATION LTD.

FCC ID No. : UU7CEW100R

FCC – Test Report

No. 50544-2

Date: 2008-08-18

Page 3 of 12

TABLE OF CONTENTS

1. Cover sheet
2. Introduction
3. Table of Contents
4. Laboratory Report
5. Test Location and Summary of Test results
6. Test Equipment List
7. Radiated Emission Test Setup
8. Conducted Emission Test Setup
9. Test Procedure
10. Test Results
11. Measurement Data
12. Photo of sample

FCC – Test Report

Date: 2008-08-18

No. 50544-2

Page 4 of 12

LABORATORY - REPORT**APPLICANT:**

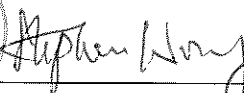
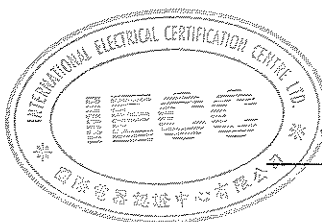
FORMATION LTD.

ADDRESS:Rm 915-918, 9/F., Corporation Square
8 Lam Lok Street
Kowloon Bay, Kowloon
Hong Kong**DATE OF SAMPLE RECEIVED:** 2008-07-10**DATE OF TESTING:** 2008-08-13 to 2008-08-15**DESCRIPTION OF SAMPLE:**

Product: Wireless Headphone
Product class: Low Power Communication Device Receiver (Super Hetrodyne)
Model number: CEW100
FCC ID number: UU7CEW100R
Rating: DC3V (AAA Size Battery x 2)

CONDITION OF TEST SAMPLE: The received sample was under good condition.**INVESTIGATIONS
REQUESTED:**Measurements to the relevant clauses of F.C.C. Rules and Regulations
Part 15 Subpart B – 'Unintentional Radiators'.**RESULTS:**

See the attached sheets.

CONCLUSIONSFrom the measurement data obtained, the tested sample was
considered to have **COMPLIED** with the requirements for the relevant
clauses of Federal Communications Commission Rules as specified
above.A handwritten signature in black ink, appearing to read 'Stephen Wong', is written over the right side of the IECC seal.

Authorized Signature



FCC – Test Report

No. 50544-2

Date: 2008-08-18

Page 5 of 12

Test Location

International Electrical Certification Centre Ltd.
Unit 602-605, 31 Lok Yip Road, On Lok Tsuen, Fanling, N.T., Hong Kong
Tel : +852 23052570
Fax : +852 27564480
Email : info@iecc.com.hk

Summary of Test Results

Radiated Emission:

Test result: O.K.
Test data: See attached data sheet

Conducted Emission:

Test result: Not Applicable
Test data: Not Applicable

FCC – Test Report

Date: 2008-08-18

No. 50544-2

Page 6 of 12

TEST EQUIPMENT LIST

Equipment	Manufacturer	Model	Serial No.	Last Calibration Date	Next Calibration Date
Test Receiver	Rohde & Schwarz	ESVS 30	828525/006	30/11/2007	29/11/2008
Antenna	Schaffner	CBL6111C	2791	22/07/2008	21/07/2010
Antenna Mast System	Schwarzbeck	AM9104	--	--	--
Turntable with Controller	Drehtisch	DT312	--	--	--
Spectrum Analyzer with Q. Peak	Advantest	R3132	140101852	03/06/2008	02/06/2009

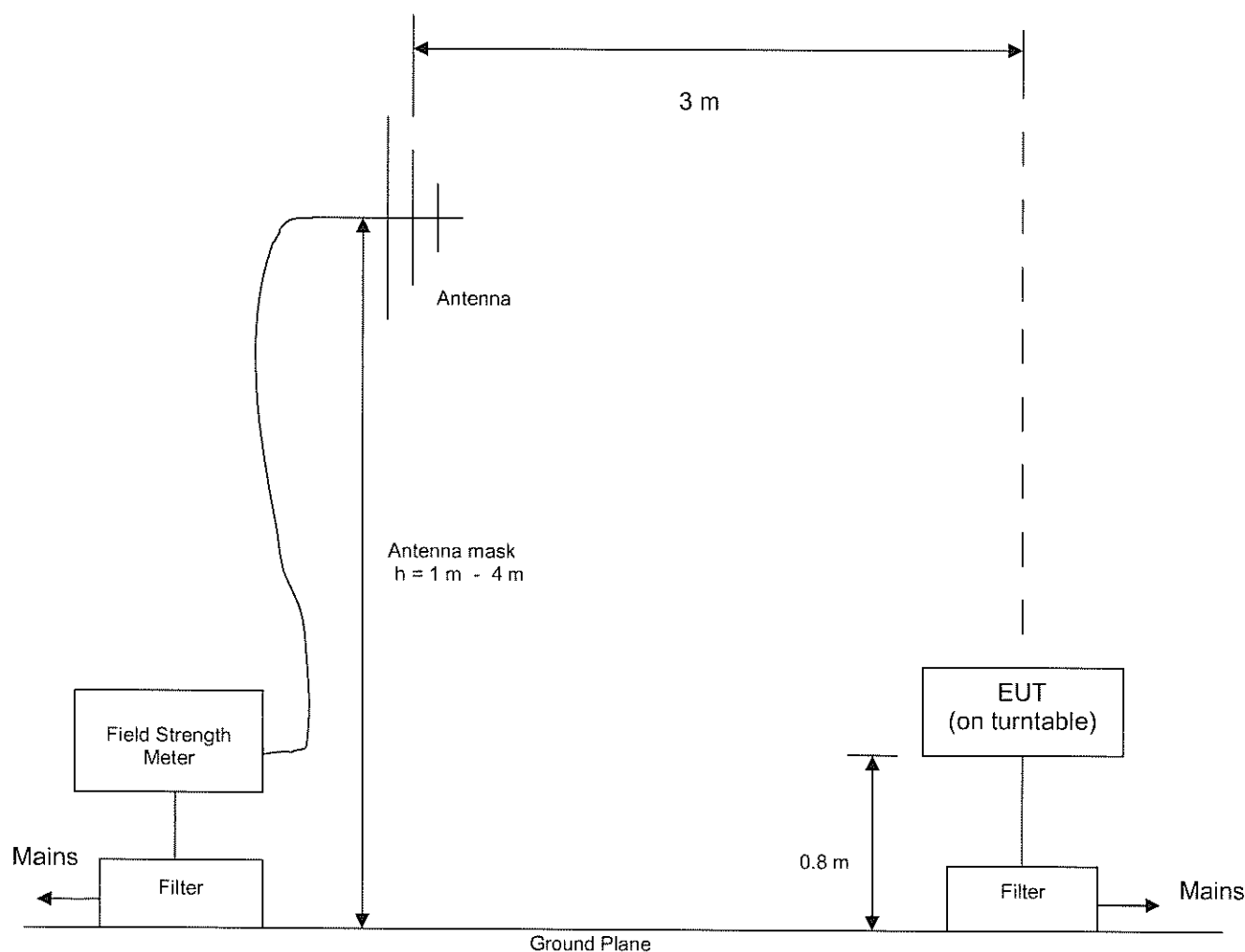
FCC – Test Report

Date: 2008-08-18

No. 50544-2

Page 7 of 12

Radiated Emission Test Setup (3 m distance) (> 30MHz)



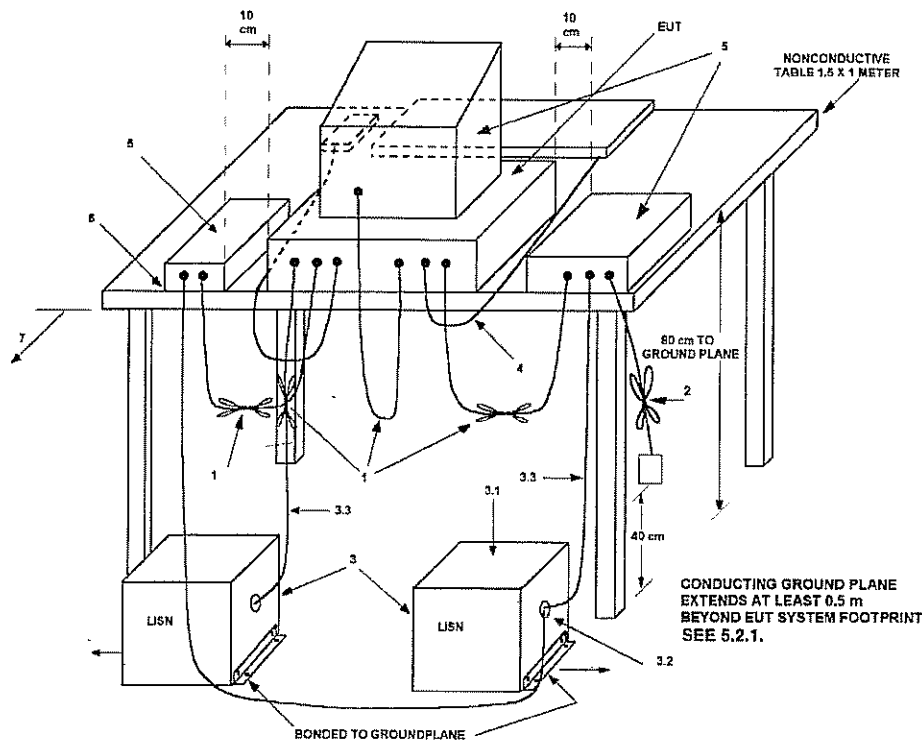
FCC – Test Report

No. 50544-2

Date: 2008-08-18

Page 8 of 12

Conducted Emission Test Setup



LEGEND:

- 1) Interconnecting cables that hang closer than 40 cm to the groundplane shall be folded back and forth in the center forming a bundle 30 to 40 cm long (see 6.1.4 and 11.2.4).
- 2) I/O cables that are not connected to a peripheral shall be bundled in the center. The end of the cable may be terminated, if required, using the correct terminating impedance. The overall length shall not exceed 1 m (see 6.1.4).
- 3) EUT connected to one LISN. Unused LISN measuring port connectors shall be terminated in 50 Ω . LISN can be placed on top of, or immediately beneath, reference groundplane (see 5.2.3 and 7.2.1).
 - 3.1) All other equipment powered from additional LISN(s).
 - 3.2) Multiple outlet strip can be used for multiple power cords of non-EUT equipment.
 - 3.3) LISN at least 80 cm from nearest part of EUT chassis.
- 4) Cables of hand-operated devices, such as keyboards, mice, etc., shall be placed as for normal use (See 6.2.1.3 and 11.2.4).
- 5) Non-EUT components of EUT system being tested (see also Figure 13).
- 6) Rear of EUT, including peripherals, shall all be aligned and flush with rear of tabletop (see 6.2.1.1 and 6.2.1.2).
- 7) Rear of tabletop shall be 40 cm removed from a vertical conducting plane that is bonded to the groundplane (see 5.2.2 for options).

FCC – Test ReportDate: 2008-08-18

No. 50544-2

Page 9 of 12

Test Procedure**Radiated Emission :**

The EUT was tested according to ANSI 63.4-2003 for the requirements of FCC Part 15 Subpart B Section 15.109.

During the test, the sample was placed on a turn table and operated with new batteries. The table is 0.8 meter above the reference ground plane on the Open Area Test Site and can rotate 360 degrees to determine the position of the maximum emission level. A broad-band antenna for the frequency range 30 - 1000 MHz, connected with 10 meters coaxial cable to the test receiver was used for measurement. The antenna is capable of measuring both horizontal and vertical polarizations. The antenna was raised from 1 to 4 meters to find out the maximum emission level from the EUT.

During the test, the transmitter unit was turned on and used to supply a signal to the test sample (receiver) to stabilize the local oscillator of the test sample.

An initial pre-scan was performed to find out the maximum emission level of the sample placed at 3 orthogonal planes. Final measurement (30 MHz –1000 MHz) was then performed to record the data for the emissions under worst-case condition for combination of the antenna orientation / height and turn table position.

Note : The Open Area Test Site located at IECC was placed on file with the FCC Pursuant to Section 2.948 of the FCC Rules (FCC Registration No. : 97774).

Conducted Emission :

Not Applicable

FCC – Test Report

Date: 2008-08-18

No. 50544-2

Page 10 of 12

Test Results**Radiated Emission :**

Test Requirement: FCC Part 15 Subpart B Section 15.109

Test Method: ANSI C63.4 : 2003

Deviations from Standard Test Method: Nil

Frequency Range: 30MHz – 1000MHz

Measurement Distance: 3 m

Detector: Quasi-Peak

Refer to page 11 for measurement data.

Conducted Emission :

Not Applicable

Interference Radiation

Date : 2008-08-18

Measurement of Radiated Emissions
Acc: FCC Part 15 Subpart B (15.109 Class B)

Page 11 of 12

IECC Ref: 50544-2
 Model: CEW100
 Applicant: FORMATION LTD.
 Ser.Nr.: --
 Set under test: Wireless Headphone
 Connected sets: -
 Operating mode: Operate

Test Equipment
 Receiver: Rohde & Schwarz ESVS 30
 Antenna: Schaffner CBL61111C

Frequency (MHz)	Horz. Reading dB(μV)	Vert. Reading dB(μV)	Corr. Factor (dB)	Horiz. Test Result dB(μV/m)	Vert. Test Result dB(μV/m)	Limit dB(μV/m)
30	< 16	< 16	19.1	< 35.1	< 35.1	40.0
78.3	18	< 16	7.7	25.7	< 23.7	40.0
117.5	< 16	< 16	11.4	< 27.4	< 27.4	43.5
137.1	< 16	< 16	10.9	< 26.9	< 26.9	43.5
156.6	24	19	11.2	35.2	30.2	43.5
176.4	18	< 16	9.8	27.8	< 25.8	43.5
195.8	24	< 16	8.9	32.9	< 24.9	43.5
200	< 16	< 16	8.6	< 24.6	< 24.6	43.5
500	< 16	< 16	18.9	< 34.9	< 34.9	46.0
1000	< 16	< 16	26.2	< 42.2	< 42.2	54.0

Note : 1. All the recorded readings are in quasi-peak values.

2. The above results were the worst case results with the sample positioned in all 3 axis during the test.
 The worst case data were recorded with the sample placed horizontally on the table.

Operator : KT

FCC – Test Report**No. 50544-2**Date: 2008-08-18

Page 12 of 12

Photo of Sample