



SAR TEST REPORT

Report No.: 20230717G07506X-W2
Product Name: Mobile Computer
Model Name: XT40
Trade Name: Janam
Brand Name: Janam
FCC ID: UTWXT40WA
IC: 6914A-XT40WA
Applicant: Janam Technologies LLC
Address: 100 Crossways Park West Suite 105 Woodbury, NY 11797
Test Date: 2023/08/08~2023/08/21
Issued by: CCIC Southern Testing Co., Ltd.
Lab Location: Electronic Testing Building, No. 43 Shahe Road Xili Street, Nanshan District, Shenzhen, Guangdong 518055, China
Tel: 86 755 26627338 **Fax:** 86 755 26627238
Mail: manager@ccic-set.com **Website** <http://www.ccic-set.com>

This test report consists of 101 pages in total. It may be duplicated completely for legal use with the approval of the applicant. It should not be reproduced except in full, without the written approval of our laboratory. The client should not use it to claim product endorsement by CCIC-SET. The test results in the report only apply to the tested sample. The test report shall be invalid without all the signatures of testing engineers, reviewer and approver. Any objections must be raised to CCIC-SET within 15 days since the date when the report is received. It will not be taken into consideration beyond this limit.



Test Report

Applicant: Janam Technologies LLC

Applicant Address: 100 Crossways Park West Suite 105 Woodbury, NY 11797

Manufacturer: Janam Technologies LLC

Manufacturer Address: 100 Crossways Park West Suite 105 Woodbury, NY 11797

47CFR §2.1093- Radiofrequency Radiation Exposure Evaluation: Portable Devices;

ANSI C95.1-1992: Safety Levels with Respect to Human Exposure to Radio Frequency Electromagnetic Fields, 3 kHz – 300 GHz.(IEEE Std C95.1-1991)

RSS-102: Radio Frequency Exposure Compliance of Radiocommunication Apparatus (All Frequency Bands)(Issue 5 of March 2015)

Test Standards: IEEE 1528-2013: IEEE Recommended Practice for Determining the Peak Spatial-Average Specific Absorption Rate (SAR) in the Human Head from Wireless Communications Devices: Measurement Techniques

IEC/IEEE 62209-1528:2020 Measurement procedure for the assessment of specific absorption rate of human exposure to radio frequency fields from hand-held and body-mounted wireless communication devices –Part 1528: Human models, instrumentation, and procedures (Frequency range of 4 MHz to 10 GHz)

Test Result: Pass

Tested by: Carl Wei 2023-08-22
Carl Wei, Test Engineer

Reviewed by: Chris You 2023-08-22
Chris You, Senior Engineer

Approved by: Yang Fan 2023-08-22
Yang Fan, Manager



Contents

Test Report	2
1. Administrative Data.....	4
2. Equipment Under Test (EUT)	5
3. SAR Summary	7
4. Specific Absorption Rate (SAR).....	10
5. Tissue check and recommend Dielectric Parameters	14
6. SAR measurement procedure	21
7. Conducted RF Output Power	22
8. Antenna Location:.....	58
9. Scaling Factor calculation	60
10. Test Results	64
11. Simultaneous Transmissions Analysis	92
12. Measurement Uncertainty.....	96
13. Equipment List.....	100
ANNEX A: Appendix A: SAR System performance Check Plots.....	101
ANNEX B: Appendix B: SAR Measurement results Plots.....	101
ANNEX C: Appendix C: Calibration reports	101
ANNEX D: Appendix D: SAR Test Setup.....	101



1. Administrative Data

1.1 Testing Laboratory

Test Site:	CCIC Southern Testing Co., Ltd.
Address:	Electronic Testing Building, No. 43 Shahe Road Xili Street, Nanshan District, Shenzhen, Guangdong 518055, China
A2LA Lab Code:	CCIC-SET is a third party testing organization accredited by A2LA according to ISO/IEC 17025:2017. The accreditation certificate number is 5721.01
FCC Registration:	CCIC Southern Testing Co., Ltd. EMC Laboratory has been registered and fully described in a report filed with the FCC (Federal Communications Commission). The acceptance letter from the FCC is maintained in our files. Designation Number: CN1283, valid time is until Sep 30th, 2023.
ISED Registration:	CCIC Southern Testing Co., Ltd. EMC Laboratory has been registered by Certification and Engineering Bureau of Industry Canada for the performance of radiated measurements with Registration No. 11185A-1 on Aug. 04, 2016, valid time is until Sep 30th, 2023.
Test Environment Condition:	Temperature (°C): 18 °C ~25 °C Relative Humidity (%): 35%~75% RH Atmospheric Pressure (kPa): 86KPa-106KPa

2. Equipment Under Test (EUT)

Identification of the Equipment under Test

Device type :	portable device	
Exposure category:	uncontrolled environment / general population	
Product Name:	Mobile Computer	
Brand Name:	Janam	
Model Name:	XT40	
Operating Band(s):	GSM850/1900, UMTS Band II/IV/V,CDMA BC 0 LTE Band 2,4,5,7,12,13,17,25,26,38,41,66 WIFI2.4G, WIFI5G (Band 1,2,3,4) ,BT	
Test Band(s):	GSM850/1900, UMTS Band II/IV/V,CDMA BC 0 LTE Band 2,4,5,7,12,13,17,25,26,38,41,66 WIFI2.4G, WIFI5G (Band 1,2,3,4) ,BT	
Test modulation:	GSM(GMSK,8PSK),UMTS(QPSK), CDMA2000 1xRTT(BPSK, QPSK),LTE(QPSK/16QAM/64QAM), WI-FI 2.4G(DSSS, OFDM), WI-FI 5G(OFDM), BT(GFSK/ π /4-DQPSK/8-DPSK)	
Device Class:	B, GPRS:12, EDGE:12	
Tested frequency range(s)	transmitter frequency range	receiver frequency range
GSM 850:	824-849 MHz	869-894 MHz
GSM 1900:	1850-1910 MHz	1930-1990 MHz
UMTS Band V:	824-849 MHz	869-894 MHz
UMTS Band IV:	1710-1755 MHz	2110-2155 MHz
UMTS Band II:	1850-1910 MHz	1930-1990 MHz
CDMA BC 0	824.70-848.31 MHz	869.70-893.31 MHz
LTE Band 2:	1850-1910 MHz	1930-1990 MHz
LTE Band 4:	1710-1755 MHz	2110-2155 MHz
LTE Band 5:	824-849 MHz	869-894 MHz
LTE Band 7:	2500-2570 MHz	2620-2690 MHz
LTE Band 12:	698-716 MHz	728-746 MHz
LTE Band 13:	777-787 MHz	746-756 MHz
LTE Band 17:	704-716 MHz	734-746 MHz
LTE Band 25:	1850-1915 MHz	1930-1995 MHz
LTE Band 26:	814-849 MHz	859-894 MHz
LTE Band 38:	2570-2620 MHz	
LTE Band 41:	2535-2655 MHz	
LTE Band 66:	1710-1780 MHz	2110-2200 MHz
Wi-Fi:	2412-2462 MHz	
	5150-5250 MHz	
	5250-5350 MHz	
	5470-5725 MHz	
	5725-5850 MHz	
Bluetooth:	2402-2480 MHz	
Antenna type :	Internal antenna	
Hotspot :	2.4GHz WLAN support Hotspot mode	



Battery options :	Model No.: HB45XT40 Capacitance: 4500mAh Rated Voltage: 3.85V Charge Limit: 4.4V Manufacturer: SHENZHEN FUJIA APPLIANCE Co.,Ltd.
MAX. SAR Value:	Head: 0.842 W/Kg(Limit:1.6W/Kg, 0mm distance) Body-worn: 1.289 W/Kg(Limit:1.6W/Kg, 10mm distance) Hotspot: 1.289 W/Kg(Limit:1.6W/Kg, 10mm distance) Limb: 3.355 W/Kg(Limit:4.0W/Kg, 0mm distance)

Note:

1. The above EUT's information was declared by manufacturer. Please refer to the specifications or user's manual for more detailed description.



3. SAR Summary

Highest Standalone SAR Summary

Exposure Position	Frequency Band	Scaled 1g-SAR(W/kg)	Highest Scaled 1g-SAR(W/kg)
Head	GSM 850 ANT 3	0.280	0.842
	GSM 1900 ANT 3	0.255	
	CDMA BC 0 ANT 3	0.425	
	WCDMA 850 ANT 3	0.382	
	WCDMA 1700 ANT 3	0.614	
	WCDMA 1900 ANT 3	0.571	
	LTE Band 2 ANT 3	0.788	
	LTE Band 4 ANT 3	0.739	
	LTE Band 5 ANT 3	0.380	
	LTE Band 7 ANT 3	0.733	
	LTE Band 12 ANT 3	0.259	
	LTE Band 13 ANT 3	0.187	
	LTE Band 17 ANT 3	0.224	
	LTE Band 25 ANT 3	0.765	
	LTE Band 26 (Part 22)ANT 3	0.384	
	LTE Band 26 (Part 90)ANT 3	0.393	
	LTE Band 38 ANT 3	0.250	
	LTE Band 41 ANT 3	0.214	
	LTE Band 66 ANT 3	0.842	
	WIFI 2.4G ANT 3	0.389	
	WIFI 5G U-NII 1 ANT 2	0.542	
	WIFI 5G U-NII 2a ANT 2	0.276	
WIFI 5G U-NII 2c ANT 2	0.405		
WIFI 5G U-NII 3 ANT 2	0.217		
BT ANT 2	0.141		



Exposure Position	Frequency Band	Scaled 1g-SAR(W/kg)	Highest Scaled 1g-SAR(W/kg)
Body-worn (10mm Gap)	GSM 850 ANT 3	0.341	1.289
	GSM 1900 ANT 3	0.450	
	CDMA BC 0 ANT 3	0.479	
	WCDMA 850 ANT 3	0.703	
	WCDMA 1700 ANT 3	0.758	
	WCDMA 1900 ANT 3	1.051	
	LTE Band 2 ANT 3	1.188	
	LTE Band 4 ANT 3	0.824	
	LTE Band 5 ANT 3	0.641	
	LTE Band 7 ANT 3	0.832	
	LTE Band 12 ANT 3	0.649	
	LTE Band 13 ANT 3	0.622	
	LTE Band 17 ANT 3	0.682	
	LTE Band 25 ANT 3	1.289	
	LTE Band 26 (Part 22)ANT 3	0.677	
	LTE Band 26 (Part 90)ANT 3	0.692	
	LTE Band 38 ANT 3	0.527	
	LTE Band 41 ANT 3	0.539	
	LTE Band 66 ANT 3	0.820	
	WIFI 2.4G ANT 3	0.199	
	WIFI 5G U-NII 1 ANT 2	0.240	
	WIFI 5G U-NII 2a ANT 2	0.236	
WIFI 5G U-NII 2c ANT 2	0.207		
WIFI 5G U-NII 3 ANT 2	0.208		
BT ANT 2	0.122		



Exposure Position	Frequency Band	Scaled 1g-SAR(W/kg)	Highest Scaled 1g-SAR(W/kg)
Hotspot (10mm Gap)	GSM 850 ANT 3	0.341	1.289
	GSM 1900 ANT 3	0.523	
	CDMA BC 0 ANT 3	0.479	
	WCDMA 850 ANT 3	0.703	
	WCDMA 1700 ANT 3	0.758	
	WCDMA 1900 ANT 3	1.051	
	LTE Band 2 ANT 3	1.188	
	LTE Band 4 ANT 3	0.824	
	LTE Band 5 ANT 3	0.641	
	LTE Band 7 ANT 3	0.832	
	LTE Band 12 ANT 3	0.649	
	LTE Band 13 ANT 3	0.622	
	LTE Band 17 ANT 3	0.682	
	LTE Band 25 ANT 3	1.289	
	LTE Band 26 (Part 22)ANT 3	0.677	
	LTE Band 26 (Part 90)ANT 3	0.692	
	LTE Band 38 ANT 3	0.527	
	LTE Band 41 ANT 3	0.539	
LTE Band 66 ANT 3	0.820		
WIFI 2.4G ANT 3	0.199		

Highest Simultaneous SAR Summary

Exposure Position	Frequency Band	Highest Simultaneous 1g-SAR(W/kg)
Body (10mmGap)	WWAN(LTE Band 25 Back ANT 3) & WIFI 5G U-NII 1 ANT 2	1.529

4. Specific Absorption Rate (SAR)

4.1 Introduction

SAR is related to the rate at which energy is absorbed per unit mass in an object exposed to a radio field. The SAR distribution in a biological body is complicated and is usually carried out by experimental techniques or numerical modeling. The standard recommends limits for two tiers of groups, occupational/controlled and general population/uncontrolled, based on a person's awareness and ability to exercise control over his or her exposure. In general, occupational/controlled exposure limits are higher than the limits for general population/uncontrolled.

The SAR definition is the time derivative (rate) of the incremental energy (dW) absorbed by (dissipated in) an incremental mass (dm) contained in a volume element (dv) of a given density (ρ). The equation description is as below:

$$\text{SAR} = \frac{d}{dt} \left(\frac{dW}{dm} \right) = \frac{d}{dt} \left(\frac{dW}{\rho dv} \right)$$

SAR is expressed in units of Watts per kilogram (W/kg)

SAR measurement can be either related to the temperature elevation in tissue by

$$\text{SAR} = C \frac{\delta T}{\delta t}$$

where C is the specific heat capacity, δT is the temperature rise and δt the exposure duration, or related to the electrical field in the tissue by

$$\text{SAR} = \frac{\sigma |E|^2}{\rho}$$

where σ is the conductivity of the tissue, ρ is the mass density of the tissue and E is the rms electrical field strength.

However for evaluating SAR of low power transmitter, electrical field measurement is typically applied.



4.2 Applicable Standards and Limits

4.2.1 Applicable Standards

47CFR §2.1093	Radiofrequency Radiation Exposure Evaluation: Portable Devices
ANSI C95.1-1992	Safety Levels with Respect to Human Exposure to Radio Frequency Electromagnetic Fields, 3 kHz – 300 GHz.(IEEE Std C95.1-1991)
RSS-102	:Radio Frequency Exposure Compliance of Radiocommunication Apparatus (All Frequency Bands)(Issue 5 of March 2015)
IEEE 1528-2013	IEEE Recommended Practice for Determining the Peak Spatial-Average Specific Absorption Rate (SAR) in the Human Head from Wireless Communications Devices: Measurement Techniques
IEC/IEEE 62209-1528:2020	Measurement procedure for the assessment of specific absorption rate of human exposure to radio frequency fields from hand-held and body-mounted wireless communication devices –Part 1528: Human models, instrumentation, and procedures (Frequency range of 4 MHz to 10 GHz)
KDB 248227 D01	v02r02 802.11 Wi-Fi SAR
KDB 447498 D01	v06 General RF Exposure Guidance
KDB 616217 D04	v01r02 SAR for laptop and tablets
KDB 648474 D04	v01r03 Handset SAR
KDB 865664 D01	v01r04 SAR Measurement 100MHz to 6GHz
KDB 865664 D02	v01r02 SAR Exposure Reporting
KDB 941225 D01	v03r01 3G SAR Procedures
KDB 941225 D05	v02r05 SAR for LTE Devices
KDB 941225 D05A	v01r02 LTE Rel.10 KDB Inquiry Sheet
KDB 941225 D06	v02r01 Hotspot Mode

4.2.2 RF exposure Limits

Human Exposure	Uncontrolled Environment General Population
Spatial Peak SAR* (Brain/Body)	1.60 mW/g
Spatial Average SAR** (Whole Body)	0.08 mW/g
Spatial Peak SAR*** (Limbs)	4.00 mW/g

The limit applied in this test report is shown in bold letters.

Notes:

* The Spatial Peak value of the SAR averaged over any 1 grams of tissue (defined as a tissue volume in the shape of a cube) and over the appropriate averaging time

** The Spatial Average value of the SAR averaged over the whole body.

*** The Spatial Peak value of the SAR averaged over any 10 grams of tissue (defined as a tissue volume in the shape of a cube) and over the appropriate averaging time.

4.3 Phantoms

The phantom used for all tests i.e. for both system checks and device testing, was the twin-headed "SAM Phantom", manufactured by SATIMO. The SAM twin phantom is a fiberglass shell phantom with 2mm shell thickness (except the ear region, where shell thickness increases to 6mm).

System checking was performed using the flat section, whilst Head SAR tests used the left and right head profile sections. Body SAR testing also used the flat section between the head profiles.

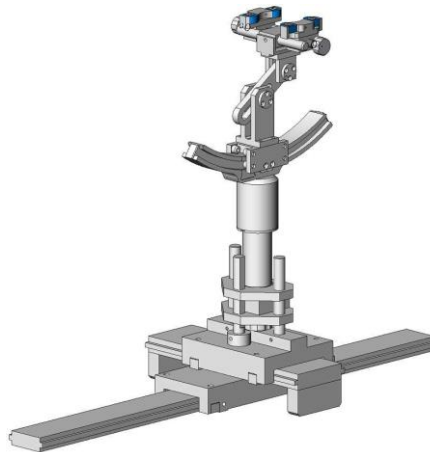


SAM Twin Phantom

4.4 Device Holder

The device was placed in the device holder (illustrated below) that is supplied by SATIMO as an integral part of the COMOSAR test system.

The device holder is designed to cope with the different positions given in the standard. It has two scales for device rotation (with respect to the body axis) and device inclination (with respect to the line between the ear reference points). The rotation centers for both scales is the ear reference point (ERP). Thus the device needs no repositioning when changing the angles.



Device holder

4.5 Probe Specification

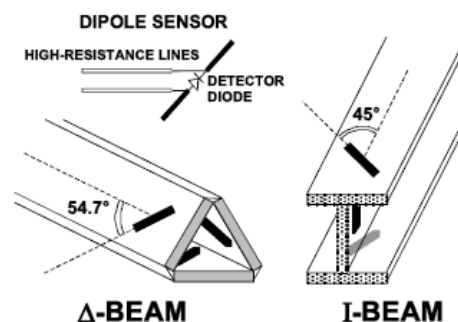


Construction	Symmetrical design with triangular core Interleaved sensors Built-in shielding against static charges PEEK enclosure material (resistant to organic solvents, e.g., DGBE)
Calibration	ISO/IEC 17025 calibration service available.
Frequency	700 MHz to 3 GHz; Linearity: ± 0.5 dB (700 MHz to 3 GHz)
Directivity	± 0.25 dB in HSL (rotation around probe axis) ± 0.5 dB in tissue material (rotation normal to probe axis)
Dynamic Range	1.5 μ W/g to 100 mW/g; Linearity: ± 0.5 dB
Dimensions	Overall length: 330 mm (Tip: 20 mm) Tip diameter: 5 mm Distance from probe tip to dipole centers: < 2.7 mm
Application	General dosimetry up to 3 GHz Dosimetry in strong gradient fields Compliance tests of mobile phones
Compatibility	COMOSAR

Isotropic E-Field Probe

The isotropic E-Field probe has been fully calibrated and assessed for isotropicity, and boundary effect within a controlled environment. Depending on the frequency for which the probe is calibrated the method utilized for calibration will change.

The E-Field probe utilizes a triangular sensor arrangement as detailed in the diagram below:



5. Tissue check and recommend Dielectric Parameters

5.1 Tissue Dielectric Parameters for Head and Body Phantoms

The head tissue dielectric parameters recommended by the IEEE SCC-34/SC-2 in P1528 have been incorporated in the following table. These head parameters are derived from planar layer models simulating the highest expected SAR for the dielectric properties and tissue thickness Power drifts in a human head. Other head and body tissue parameters that have not been specified in P1528 are derived from the tissue dielectric parameters computed from the 4-Cole-Cole equations described in Reference [12] and extrapolated according to the head parameters specified in P1528.

Table 1: Recommended Dielectric Performance of Tissue

Ingredients (% by weight)	Frequency (MHz)											
	450		835		915		1900		2450		2600	
Tissue Type	Head	Body	Head	Body	Head	Body	Head	Body	Head	Body	Head	Body
Water	38.56	51.16	41.46	52.4	41.05	56.0	54.9	40.4	62.7	73.2	55.24	64.49
Salt (NaCl)	3.95	1.49	1.45	1.4	1.35	0.76	0.18	0.5	0.5	0.04	0.5	0.024
Sugar	56.32	46.78	56.0	45.0	56.5	41.76	0.0	58.0	0.0	0.0	0.0	0.0
HEC	0.98	0.52	1.0	1.0	1.0	1.21	0.0	1.0	0.0	0.0	0.0	0.0
Bactericide	0.19	0.05	0.1	0.1	0.1	0.27	0.0	0.1	0.0	0.0	0.0	0.0
Triton x-100	0.0	0.0	0.0	0.0	0.0	0.0	0.0	0.0	36.8	0.0	44.45	32.25
DGBE	0.0	0.0	0.0	0.0	0.0	0.0	44.92	0.0	0.0	26.7	0.0	26.7
Dielectric Constant	43.42	58.0	42.54	56.1	42.0	56.8	39.9	54.0	39.2	52.5	39.0	52.5
Conductivity (s/m)	0.85	0.83	0.91	0.95	1.0	1.07	1.42	1.45	1.80	1.78	1.96	2.16

MSL/HSL750 (Body and Head liquid for 650 – 850 MHz)

Item	Head Tissue Simulation Liquid HSL750 Muscle(body)Tissue Simulation Liquid MSL750			
H2O	Water, 35 – 58%			
Sucrose	Sugar, white, refined, 40-60%			
NaCl	Sodium Chloride, 0-6%			
Hydroxyethyl-cellulose	Medium Viscosity (CAS# 9004-62-0), <0.3%			
Preventol-D7	Preservative: aqueous preparation, (CAS# 55965-84-9), containing 5-chloro-2-methyl-3(2H)-isothiazolone and 2-methyl-3(2H)-isothiazolone, 0.1-0.7%			
Frequency (MHz)	Head ϵ_r	Head σ (S/m)	Body ϵ_r	Body σ (S/m)
750	41.9	0.89	55.2	0.97

Note: The liquid of 700MHz&2600MHz typical liquid composition is provided by SATIMO.



Frequency:5200/5400/5600/5800MHz	
Ingredients	(% by weight)
Water	78
Mineral oil	11
Emulsifiers	9
Additives and Salt	2

Table 2 Recommended Tissue Dielectric Parameters

Frequency (MHz)	Head Tissue		Body Tissue	
	ϵ_r	σ (S/m)	ϵ_r	σ (S/m)
150	52.3	0.76	61.9	0.80
300	45.3	0.87	58.2	0.92
450	43.5	0.87	56.7	0.94
835	41.5	0.90	55.2	0.97
900	41.5	0.97	55.0	1.05
915	41.5	0.98	55.0	1.06
1450	40.5	1.20	54.0	1.30
1610	40.3	1.29	53.8	1.40
1800-2000	40.0	1.40	53.3	1.52
2450	39.2	1.80	52.7	1.95
3000	38.5	2.40	52.0	2.73
5800	35.3	5.27	48.2	6.00

5.2 Simulate liquid

Liquid check results:

Table 3: Dielectric Performance of Tissue Simulating Liquid

/	Frequency	Permittivity ϵ	Conductivity σ (S/m)	Liquid Temp. ($^{\circ}$ C)	Test Date
Target value	750 MHz	41.9 \pm 5% (39.805~43.995)	0.89 \pm 5% (0.8455~0.9345)	22.1	2023/08/17
Validation value	704 MHz	41.23	0.88		
	707.5 MHz	41.23	0.88		
	709 MHz	41.22	0.88		
	710 MHz	41.22	0.88		
	711 MHz	41.22	0.88		
	750 MHz	41.12	0.90		
782 MHz	41.05	0.91			
Target value	835 MHz	41.5 \pm 5% (39.425~43.575)	0.90 \pm 5% (0.855~0.945)	22.5	2023/08/08
Validation value	819 MHz	40.90	0.88		
	829 MHz	40.87	0.89		
	831.5 MHz	40.86	0.89		
	835 MHz	40.87	0.89		
	836.5 MHz	40.87	0.89		
	841.5 MHz	40.86	0.90		
844 MHz	40.86	0.90			
Target value	835 MHz	41.5 \pm 5% (39.425~43.575)	0.90 \pm 5% (0.855~0.945)	22.2	2023/08/11
Validation value	824.2 MHz	41.41	0.90		
	824.7 MHz	41.41	0.90		
	826.4 MHz	41.40	0.90		
	835 MHz	41.38	0.91		
	836.52 MHz	41.38	0.91		
	836.6 MHz	41.38	0.91		
	846.6 MHz	41.36	0.92		
	848.31 MHz	41.36	0.92		
848.8 MHz	41.35	0.92			



Target value	1800 MHz	40.0±5% (38.0~42.0)	1.40±5% (1.33~1.47)	22.0	2023/08/21
Validation value	1712.4 MHz	40.87	1.32		
	1720 MHz	40.86	1.33		
	1732.5 MHz	40.81	1.34		
	1732.6 MHz	40.81	1.34		
	1745 MHz	40.79	1.35		
	1752.6 MHz	40.78	1.35		
	1770 MHz	40.76	1.36		
1800 MHz	40.70	1.38			
Target value	1900 MHz	39.2±5% (37.24~41.16)	1.80±5% (1.71~1.89)	22.0	2023/08/12
Validation value	1850.2 MHz	39.80	1.37		
	1852.4 MHz	39.80	1.37		
	1860 MHz	39.81	1.38		
	1880 MHz	39.76	1.39		
	1882.5 MHz	39.75	1.39		
	1900 MHz	39.72	1.41		
	1905 MHz	39.72	1.41		
	1907.6 MHz	39.70	1.41		
1909.8 MHz	39.70	1.41			
Target value	2450 MHz	39.2±5% (37.24~41.16)	1.80±5% (1.71~1.89)	22.3	2023/08/18
Validation value	2402 MHz	38.30	1.78		
	2412 MHz	38.29	1.79		
	2437 MHz	38.26	1.81		
	2441 MHz	38.25	1.82		
	2450 MHz	38.23	1.82		
	2462 MHz	38.21	1.83		
2480 MHz	38.14	1.85			
Target value	2600 MHz	39.0±5% (37.05~40.95)	1.96±5% (1.862~2.058)	22.4	2023/08/15
Validation value	2510 MHz	39.50	1.82		
	2535 MHz	39.45	1.84		
	2560 MHz	39.40	1.86		
	2565 MHz	39.40	1.86		
	2580 MHz	39.37	1.88		
	2595 MHz	39.36	1.89		
	2600 MHz	39.34	1.89		
	2605 MHz	39.33	1.89		
2645 MHz	39.21	1.92			

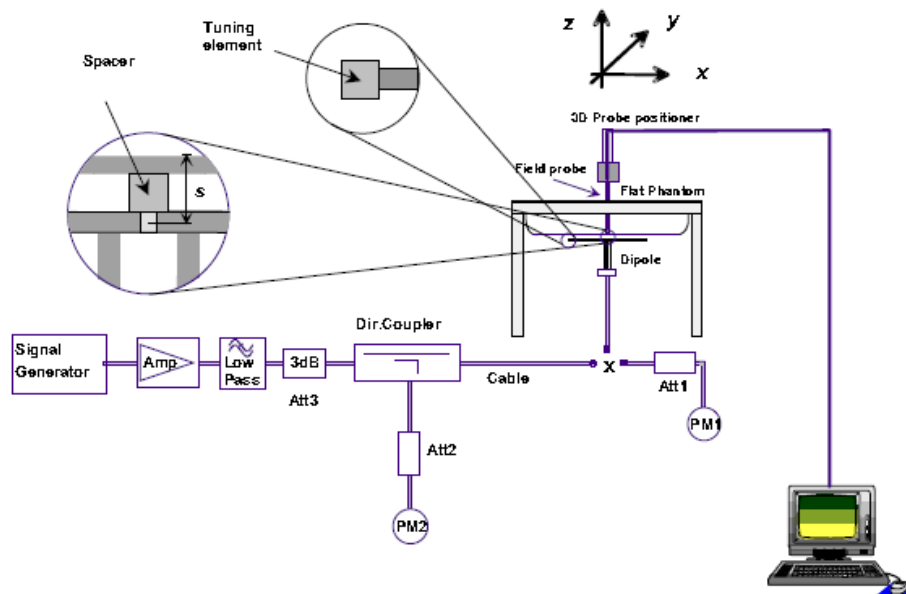


Target value	5200 MHz	36.0±5% (34.20~37.80)	4.66±5% (4.427~4.893)	22.3	2023/08/13
Validation value	5180 MHz	35.70	4.59		
	5200 MHz	35.67	4.61		
	5220 MHz	35.62	4.62		
	5240 MHz	35.59	4.64		
	5260 MHz	35.55	4.65		
5300 MHz	35.48	4.69			
Target value	5400 MHz	35.8±5% (34.01~37.59)	4.86±5% (4.617~5.103)	22.3	2023/08/13
Validation value	5320 MHz	35.40	4.72		
	5400 MHz	35.21	4.80		
Target value	5600 MHz	35.8±5% (34.01~37.59)	4.86±5% (4.617~5.103)	22.0	2023/08/14
Validation value	5500 MHz	34.87	4.82		
	5600 MHz	34.70	5.04		
	5700 MHz	54.53	5.18		
Target value	5800 MHz	35.3±5% (33.535~37.065)	5.27±5% (5.0065~5.5335)	22.0	2023/08/14
Validation value	5745 MHz	34.48	5.21		
	5785 MHz	34.40	5.26		
	5800 MHz	34.42	5.29		
	5825 MHz	34.38	5.34		

SAR System validation

Prior to the assessment, the system validation kit was used to test whether the system was operating within its specifications of $\pm 10\%$. The validation results are tabulated below. And also the corresponding SAR plot is attached as well in the SAR plots files.

The following procedure, recommended for performing validation tests using box phantoms is based on the procedures described in the IEEE standard P1528. Setup according to the setup diagram below:



With the SG and Amp and with directional coupler in place, set up the source signal at the relevant frequency and use a power meter to measure the power at the end of the SMA cable that you intend to connect to the balanced dipole. Adjust the SG to make this, say, 0.01W (10 dBm). If this level is too high to read directly with the power meter sensor, insert a calibrated attenuator (e.g. 10 or 20 dB) and make a suitable correction to the power meter reading.

Note 1: In this method, the directional coupler is used for monitoring rather than setting the exact feed power level.

If, however, the directional coupler is used for power measurement, you should check the frequency range and power rating of the coupler and measure the coupling factor (referred to output) at the test frequency using a VNA.

Note 2: Remember that the use of a 3dB attenuator (as shown in Figure 8.1 of P1528) means that you need an RF amplifier of 2 times greater power for the same feed power. The other issue is the cable length. You might get up to 1dB of loss per meter of cable, so the cable length after the coupler needs to be quite short.

Note 3: For the validation testing done using CW signals, most power meters are suitable. However, if you are measuring the output of a modulated signal from either a signal generator or a handset, you must ensure that the power meter correctly reads the modulated signals.

The measured 1-gram averaged SAR values of the device against the phantom are provided in Tables 5 and Table 6. The body phantom were full of the body tissue simulating liquid. The EUT was supplied with full-charged battery for each measurement.

The distance between the back of the EUT and the bottom of the flat phantom is 10 mm (taking into account of the IEEE 1528 and the place of the antenna).

Table 4: system validation (1g)
System Check Results

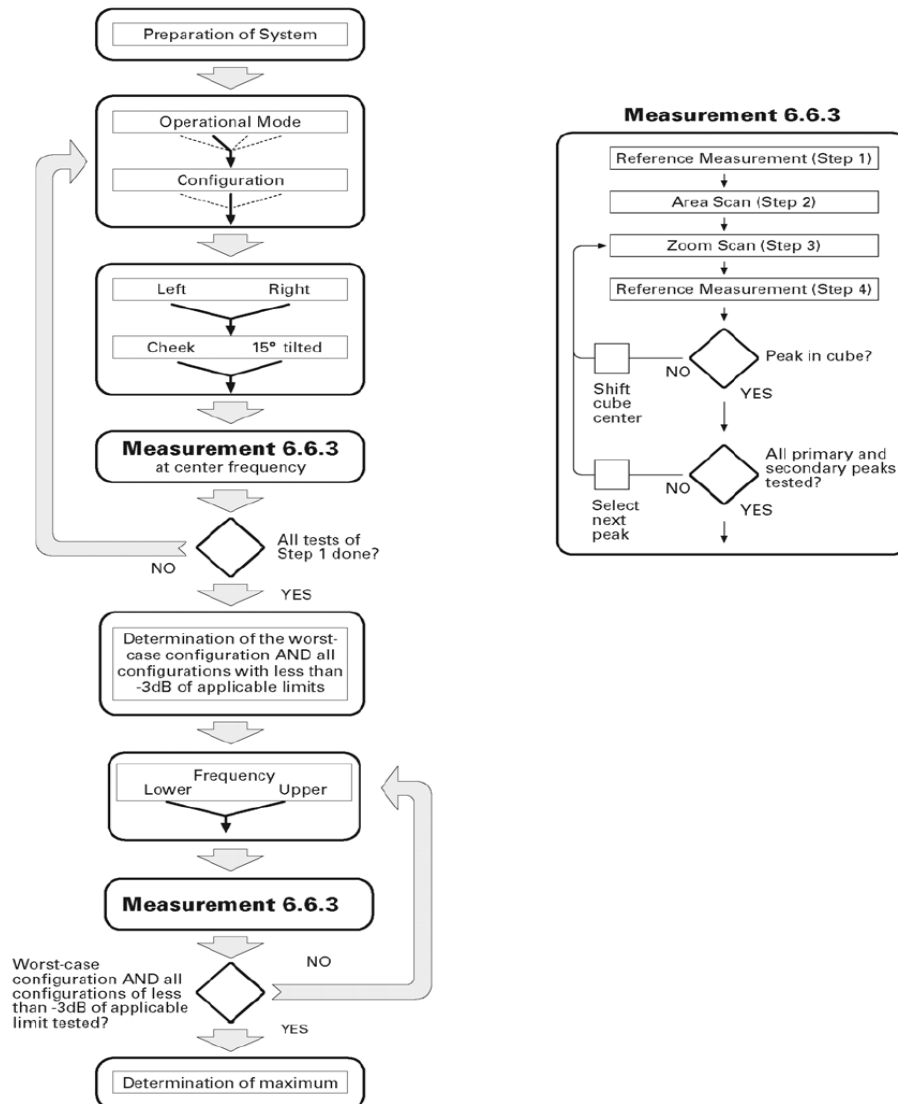
Frequency	Duty cycle	Target value (1-g) (W/Kg)	10mW Test value (1-g) (W/Kg)	Test SAR Normalized to 1W(w/Kg)	Test Date
750MHz	1:1	8.65 W/kg±10% (7.785~9.515)	0.0858	8.58	2023/08/17
835MHz	1:1	9.93 W/kg±10% (8.937~10.923)	0.1008	10.08	2023/08/08
835MHz	1:1	9.93 W/kg±10% (8.937~10.923)	0.0943	9.43	2023/08/11
1800MHz	1:1	37.81 W/kg±10% (34.029~41.591)	0.3950	39.50	2023/08/21
1900MHz	1:1	41.50 W/kg±10% (37.350~45.650)	0.4163	41.63	2023/08/12
2450MHz	1:1	51.74 W/kg±10% (46.566~56.914)	0.5302	53.02	2023/08/18
2600MHz	1:1	57.13 W/kg±10% (51.417~62.843)	0.5389	53.89	2023/08/15
5200MHz	1:1	152.95 W/kg±10% (137.655~168.245)	1.6483	164.83	2023/08/13
5400MHz	1:1	159.94 W/kg±10% (143.946~175.934)	1.6676	166.76	2023/08/13
5600MHz	1:1	166.59 W/kg±10% (149.931~183.249)	1.7161	171.61	2023/08/14
5800MHz	1:1	174.67 W/kg±10% (157.203~192.137)	1.8400	184.00	2023/08/14

Note:

1. Target value was referring to the measured value in the calibration certificate of reference dipole.
2. All SAR values are normalized to 1W forward power.

6. SAR measurement procedure

The SAR test against the head phantom was carried out as follow:



Establish a call with the maximum output power with a base station simulator, the connection between the EUT and the base station simulator is established via air interface.

After an area scan has been done at a fixed distance of 2mm from the surface of the phantom on the source side, a 3D scan is set up around the location of the maximum spot SAR. First, a point within the scan area is visited by the probe and a SAR reading taken at the start of testing. At the end of testing, the probe is returned to the same point and a second reading is taken. Comparison between these start and end readings enables the power drift during measurement to be assessed.

Above is the scanning procedure flow chart and table from the IEEE p1528 standard. This is the procedure for which all compliant testing should be carried out to ensure that all variations of the device position and transmission behavior are tested.



7. Conducted RF Output Power

7.1 GSM Conducted Power

GSM850 ANT 3		Burst-Averaged output Power (dBm)			Division Factors	Frame-Averaged output Power (dBm)		
		128CH	190CH	251CH		128CH	190CH	251CH
		824.2	836.6	848.8		824.2	836.6	848.8
GSM (CS)		32.80	32.42	32.45	-9.03	23.77	23.39	23.42
GPRS (GMSK)	1 Tx Slot	32.69	32.29	32.37	-9.03	23.66	23.26	23.34
	2 Tx Slots	29.42	29.14	29.11	-6.02	23.40	23.12	23.09
	3 Tx Slots	27.37	27.15	27.11	-4.26	23.11	22.89	22.85
	4 Tx Slots	26.10	25.81	25.70	-3.01	23.09	22.80	22.69
EDGE (8PSK)	1 Tx Slot	27.05	26.84	26.75	-9.03	18.02	17.81	17.72
	2 Tx Slots	23.94	23.76	23.65	-6.02	17.92	17.74	17.63
	3 Tx Slots	21.93	21.73	21.58	-4.26	17.67	17.47	17.32
	4 Tx Slots	20.37	20.20	20.03	-3.01	17.36	17.19	17.02
GSM1900 ANT 3		Burst-Averaged output Power (dBm)			Division Factors	Frame-Averaged output Power (dBm)		
		512CH	661CH	810CH		512CH	661CH	810CH
		1850.2	1880.0	1909.8		1850.2	1880.0	1909.8
GSM (CS)		29.52	29.73	29.72	-9.03	20.49	20.70	20.69
GPRS (GMSK)	1 Tx Slot	29.50	29.71	29.70	-9.03	20.47	20.68	20.67
	2 Tx Slots	27.20	26.97	27.04	-6.02	21.18	20.95	21.02
	3 Tx Slots	24.90	24.74	25.16	-4.26	20.64	20.48	20.90
	4 Tx Slots	23.67	23.46	23.83	-3.01	20.66	20.45	20.82
EDGE (8PSK)	1 Tx Slot	25.87	25.69	25.83	-9.03	16.84	16.66	16.80
	2 Tx Slots	23.47	23.33	23.53	-6.02	17.45	17.31	17.51
	3 Tx Slots	21.56	21.41	21.61	-4.26	17.30	17.15	17.35
	4 Tx Slots	19.62	19.77	19.85	-3.01	16.61	16.76	16.84

Note:

1. Per KDB 447498 D01 v06, the maximum output power channel is used for SAR testing and for further SAR test reduction.
2. For hotspot SAR, EUT was performed at GPRS Class 12 multi-slots(2Tx) mode.
3. For Head and Body-worn SAR testing, EUT was set in GSM Voice mode for both GSM850 and GSM1900.

Timeslot consignations

No. Of Slots	Slot 1	Slot 2	Slot 3	Slot 4
Slot Consignation	1Up4Down	2UpDown	3UpDown	4Up1Down
Duty Cycle	1:8	1:4	1:2.67	1:2
Crest Factor	-9.03dB	-6.02dB	-4.26dB	-3.01dB

7.2 CDMA Conducted output Power

CDMA BC0 ANT 3	Average Power (dBm)		
	1013CH	384CH	777CH
	824.70MHz	836.52MHz	848.31MHz
RC1 + SO55	23.63	23.68	23.39
RC3 + SO55	23.58	23.63	23.34
RC3 + SO32(+F-SCH)	23.42	23.52	23.26
RC3 + SO32(+SCH)	23.46	23.57	23.37

Note:

1. Per KDB 941225 D01, SAR for RC1 is not required when the maximum average output of each channel is less than ¼ dB higher than that measured in RC3.
2. SAR for next to the ear head exposure is measured in RC3 with the handset configured to transmit at full rate in SO55. The 3G SAR test reduction procedure is applied to RC1 with RC3 as the primary mode
3. Per KDB 941225 D01, SAR for body exposure configurations is measured in RC3 with the DUT configured using TDSO/SO32, to transmit at full rate on FCH with all other code channels disabled.
4. Per KDB 941225 D01, SAR for multiple code channels (FCH + SCHn) is not required when the maximum average output of each RF channel is less than ¼ dB higher than that measured with FCH only.

7.3 WCDMA Conducted output Power

UMTS850 (Band V) ANT 3		Averaged output Power (dBm)		
		4132CH	4183CH	4233CH
		826.4	836.6	846..6
WCDMA	12.2kbps RMC	24.05	24.07	24.06
HSDPA	Subtest 1	24.03	24.06	24.04
	Subtest 2	23.07	22.92	22.71
	Subtest 3	22.48	22.66	22.65
	Subtest 4	21.39	21.53	21.51
HSUPA	Subtest 1	22.69	22.47	22.39
	Subtest 2	22.57	22.34	22.66
	Subtest 3	22.03	22.05	22.19
	Subtest 4	21.92	22.17	22.07
	Subtest 5	21.38	21.25	21.12



UMTS1700 (Band IV) ANT 3		Averaged output Power (dBm)		
		1312CH	1413CH	1513CH
		882.4	897.6	912.6
WCDMA	12.2kbps RMC	23.82	23.92	23.87
HSDPA	Subtest 1	23.80	23.91	23.85
	Subtest 2	22.86	22.94	23.02
	Subtest 3	22.40	22.35	22.54
	Subtest 4	21.33	21.41	21.35
HSUPA	Subtest 1	22.80	22.91	22.81
	Subtest 2	22.52	22.45	22.62
	Subtest 3	21.85	21.73	21.91
	Subtest 4	20.64	20.45	20.52
	Subtest 5	21.56	21.35	21.82
UMTS1900 (Band II) ANT 3		Averaged output Power (dBm)		
		9262CH	9400CH	9538cH
		1852.4	1880.0	1907.6
WCDMA	12.2kbps RMC	24.09	23.99	24.00
HSDPA	Subtest 1	24.07	23.97	23.98
	Subtest 2	23.14	23.27	23.09
	Subtest 3	23.06	23.18	22.96
	Subtest 4	22.94	23.06	22.83
HSUPA	Subtest 1	22.85	22.94	22.71
	Subtest 2	22.76	22.86	22.60
	Subtest 3	22.53	22.75	22.57
	Subtest 4	22.47	22.57	22.43
	Subtest 5	22.38	22.46	22.29

Note:

1. WCDMA SAR was tested under RMC 12.2kbps with HSPA Inactive per KDB Publication 941225 D01v03r01.HSPA SAR was not requires since the average output power of the HSPA subtests was not more than 0.25dB higher than the RMC level and SAR was less than 1.2W/kg.
2. It is expected by the manufacturer that MPR for some HSPA subtests may be up to 2dB more than specified by 3GPP, but also as low as 0dB according to the chipset implementation in this model

7.4 LTE Conducted peak output Power

LTE Test Configurations

The CMW500 Wide Band Radio Communication Tester was used for LTE output power measurements and SAR testing. Closed loop power control was used so the UE transmits with maximum output power during SAR testing. SAR test were performed with the same number of RB and RB offsets transmitting on all frames.

1) Spectrum Plots for RB configurations

A properly configured base station simulator was used for LTE output power measurements and SAR testing. Therefore, spectrum plots for RB configurations were not required to be included in this report.

2) MPR

When MPR is implemented permanently within the UE, regardless of network requirements, only those RB configurations allowed by 3GPP for the channel bandwidth and modulation combinations may be tested with MPR active. Configurations with RB allocations less than the RB thresholds required by 3GPP must be tested without MPR.

The allowed Maximum Power Reduction(MPR) for the maximum output power due to higher order modulation and transmit bandwidth configuration (resource blocks) is specified in Table 6.2.3-1 of the 3GPP TS36.101:

Table 6.2.3-1: Maximum Power Reduction (MPR) for Power Class 3

Modulation	Channel bandwidth / Transmission bandwidth configuration [RB]						MPR (dB)
	1.4 MHz	3.0 MHz	5 MHz	10 MHz	15 MHz	20 MHz	
QPSK	> 5	> 4	> 8	> 12	> 16	> 18	≤ 1
16 QAM	≤ 5	≤ 4	≤ 8	≤ 12	≤ 16	≤ 18	≤ 1
16 QAM	> 5	> 4	> 8	> 12	> 16	> 18	≤ 2

3) A-MPR LTE procedures for SAR testing

A-MPR(Additional MPR) has been disabled for all SAR tests by using Network Signaling Value of “NS_01” on the base station simulator.

4) LTE procedures for SAR testing

A) Largest channel bandwidth standalone SAR test

requirements i) QPSK with 1 RB allocation

Start with the largest channel bandwidth and measure SAR for QPSK with 1 RB allocation, using the RB offset and required test channel combination with the highest maximum output power for RB offsets at the upper edge, middle and lower edge of each required test channel. When the reported SAR is ≤ 0.8 W/kg, testing of the remaining RB offset configurations and required test channels is not required for 1RB allocation; otherwise, SAR is required for the remaining required test channels and only for the RB offset configuration with the highest output power for that channel. When the reported SAR of a required test channel is > 1.45 W/kg, SAR is required for all three RB offset configurations for that required test channel.



1. LTE Band 2 Conducted Power Test Verdict:

LTE FDD Band 2 ANT 3				Conducted Power(dBm)			Tune up		
Bandwidth	Modulation	RB size	RB offset	Channel/Frequency					
				18607/1850.7	18900/1880.0	19193/1909.3			
1.4MHz	QPSK	1	0	23.62	23.63	23.63	23.0±1.0		
		1	3	23.61	23.62	23.59			
		1	5	23.67	23.70	23.57			
		3	0	22.60	22.53	22.70	22.0±1.0		
		3	2	22.60	22.53	22.70			
		3	3	22.60	22.67	22.69			
	16QAM	6	0	22.57	22.54	22.59	22.0±1.0		
		1	0	22.74	22.64	23.01	22.5±1.0		
		1	3	22.97	22.72	22.85			
		1	5	23.05	22.37	23.09			
		3	0	21.81	21.93	21.69	21.5±1.0		
		3	2	21.85	21.86	21.55			
3	3	21.77	21.92	21.68					
		6	0	21.62	21.76	21.61	21.5±1.0		
Bandwidth	Modulation	RB size	RB offset	Channel/Frequency			Tune up		
				18615/1851.5	18900/1880.0	19185/1908.5			
3MHz	QPSK	1	0	23.72	23.51	23.71	23.0±1.0		
		1	7	23.57	23.67	23.80			
		1	14	23.51	23.60	23.61			
		8	0	22.51	22.72	22.65	22.0±1.0		
		8	4	22.51	22.63	22.65			
		8	7	22.53	22.72	22.61			
		15	0	22.53	22.74	22.59	22.0±1.0		
	16QAM	1	0	22.78	22.81	22.93	22.5±1.0		
		1	7	22.95	23.09	22.73			
		1	14	22.79	22.88	23.08			
		8	0	21.88	21.77	21.61	21.5±1.0		
		8	4	21.87	21.78	21.61			
		8	7	21.84	21.77	21.76			
				15	0	21.47	21.82	21.52	21.5±1.0



LTE FDD Band 2 ANT 3				Conducted Power(dBm)			
Bandwidth	Modulation	RB size	RB offset	Channel/Frequency			Tune up
				18625/1852.5	18900/1880.0	19175/1907.5	
5MHz	QPSK	1	0	23.44	23.26	23.55	23.0±1.0
		1	13	23.59	23.35	23.44	
		1	24	23.49	23.59	23.72	
		12	0	22.60	22.61	22.67	22.0±1.0
		12	6	22.60	22.62	22.68	
		12	13	22.63	22.62	22.66	
	25	0	22.55	22.54	22.43	22.0±1.0	
	16QAM	1	0	22.54	22.72	22.50	22.5±1.0
		1	13	22.48	22.84	22.42	
		1	24	22.68	22.76	22.34	
		12	0	21.48	21.49	21.54	21.0±1.0
		12	6	21.47	21.50	21.55	
		12	13	21.32	21.52	21.52	
		25	0	21.36	21.47	21.46	21.0±1.0
Bandwidth	Modulation	RB size	RB offset	Channel/Frequency			Tune up
10MHz	QPSK	1	0	23.63	23.66	23.66	23.0±1.0
		1	25	23.70	23.70	23.59	
		1	49	23.55	23.68	23.69	
		25	0	22.70	22.68	22.54	22.0±1.0
		25	13	22.70	22.66	22.55	
		25	25	22.71	22.66	22.66	
		50	0	22.70	22.66	22.54	22.0±1.0
	16QAM	1	0	23.10	23.23	23.24	22.5±1.0
		1	25	23.21	23.09	23.20	
		1	49	23.13	23.15	23.02	
		25	0	21.73	21.79	21.67	21.5±1.0
		25	13	21.83	21.80	21.67	
		25	25	21.84	21.80	21.77	
		50	0	21.67	21.75	21.52	21.5±1.0



LTE FDD Band 2 ANT 3				Conducted Power(dBm)			
Bandwidth	Modulation	RB size	RB offset	Channel/Frequency			Tune up
				18675/1857.5	18900/1880.0	19125/1902.5	
15MHz	QPSK	1	0	23.60	23.69	23.73	23.0±1.0
		1	38	23.45	23.62	23.48	
		1	74	23.67	23.67	23.56	
		36	0	23.04	22.41	23.01	22.5±1.0
		36	18	23.03	22.36	23.01	
		36	39	23.05	23.19	23.10	
		75	0	22.63	22.66	22.56	22.0±1.0
	16QAM	1	0	23.09	23.26	22.98	22.5±1.0
		1	38	23.02	23.13	23.01	
		1	74	23.31	23.09	23.09	
		36	0	21.75	21.85	21.78	21.5±1.0
		36	18	21.82	21.69	21.86	
		36	39	21.77	21.76	21.70	
		75	0	21.61	21.63	21.55	21.0±1.0
Bandwidth	Modulation	RB size	RB offset	Channel/Frequency			Tune up
				18700/1860	18900/1880.0	19100/1900	
20MHz	QPSK	1	0	23.61	23.59	23.68	23.0±1.0
		1	50	23.43	23.50	23.48	
		1	99	23.64	23.53	23.70	
		50	0	22.47	22.69	22.53	22.0±1.0
		50	25	22.52	22.69	22.55	
		50	50	22.48	22.61	22.54	
		100	0	22.42	22.51	22.54	22.0±1.0
	16QAM	1	0	22.72	22.81	22.84	22.5±1.0
		1	50	22.54	22.67	22.67	
		1	99	22.86	22.78	22.79	
		50	0	21.53	21.64	21.60	21.0±1.0
		50	25	21.57	21.64	21.61	
		50	50	21.58	21.67	21.55	
		100	0	21.53	21.57	21.65	21.0±1.0



2. LTE Band 4 Conducted Power Test Verdict:

LTE FDD Band 4 ANT 3				Conducted Power(dBm)			Tune up
Bandwidth	Modulation	RB size	RB offset	Channel/Frequency			
				19957/1710.7	20175/1732.5	20393/1754.3	
1.4MHz	QPSK	1	0	23.70	23.59	23.63	23.0±1.0
		1	3	23.59	23.49	23.57	
		1	5	23.66	23.64	23.67	
		3	0	22.60	22.68	22.42	22.0±1.0
		3	2	22.66	22.68	22.54	
		3	3	22.58	22.56	22.42	
		6	0	22.50	22.50	22.43	22.0±1.0
	16QAM	1	0	22.72	22.88	22.74	22.5±1.0
		1	3	22.79	22.60	22.82	
		1	5	22.95	22.87	22.79	
		3	0	21.54	21.37	21.58	21.0±1.0
		3	2	21.54	21.38	21.57	
		3	3	21.57	21.47	21.52	
		6	0	21.43	21.24	21.36	21.0±1.0
Bandwidth	Modulation	RB size	RB offset	Channel/Frequency			Tune up
3MHz	QPSK	1	0	23.51	23.44	23.55	23.0±1.0
		1	7	23.51	23.63	23.43	
		1	14	23.44	23.44	23.22	
		8	0	22.45	22.50	22.31	22.0±1.0
		8	4	22.47	22.51	22.42	
		8	7	22.47	22.48	22.28	
		15	0	22.40	22.43	22.27	22.0±1.0
	16QAM	1	0	22.79	22.75	22.63	22.5±1.0
		1	7	22.82	22.84	22.51	
		1	14	22.76	22.72	22.53	
		8	0	21.54	21.78	21.55	21.5±1.0
		8	4	21.50	21.79	21.43	
		8	7	21.44	21.86	21.75	
		15	0	21.38	21.71	21.52	21.0±1.0



LTE FDD Band 4 ANT 3				Conducted Power(dBm)			
Bandwidth	Modulation	RB size	RB offset	Channel/Frequency			Tune up
				19975/1712.5	20175/1732.5	20375/1752.5	
5MHz	QPSK	1	0	23.81	23.29	23.58	23.0±1.0
		1	13	23.32	23.56	23.57	
		1	24	23.91	23.45	23.49	
		12	0	22.48	22.43	22.36	22.0±1.0
		12	6	22.48	22.44	22.38	
		12	13	22.46	22.49	22.61	
	25	0	22.48	22.42	22.49	22.0±1.0	
	16QAM	1	0	22.57	22.47	22.39	22.0±1.0
		1	13	22.43	22.35	22.31	
		1	24	22.55	22.44	22.49	
		12	0	21.56	21.43	21.47	21.0±1.0
		12	6	21.36	21.44	21.33	
		12	13	21.44	21.48	21.66	
		25	0	21.62	21.46	21.49	21.0±1.0
Bandwidth	Modulation	RB size	RB offset	Channel/Frequency			Tune up
10MHz	QPSK	1	0	23.71	23.57	23.54	23.0±1.0
		1	25	23.54	23.45	23.45	
		1	49	23.67	23.66	23.63	
		25	0	22.54	22.48	22.52	22.0±1.0
		25	13	22.55	22.49	22.48	
		25	25	22.53	22.43	22.52	
		50	0	22.51	22.41	22.52	22.0±1.0
	16QAM	1	0	22.45	22.72	22.61	22.0±1.0
		1	25	22.63	22.54	22.59	
		1	49	22.55	22.61	22.63	
		25	0	21.58	21.63	21.32	21.0±1.0
		25	13	21.59	21.63	21.63	
		25	25	21.48	21.57	21.58	
		50	0	21.55	21.40	21.35	21.0±1.0



LTE FDD Band 4 ANT 3				Conducted Power(dBm)			
Bandwidth	Modulation	RB size	RB offset	Channel/Frequency			Tune up
				20025/1717.5	20175/1732.5	20325/1747.5	
15MHz	QPSK	1	0	23.40	23.39	23.53	23.0±1.0
		1	38	23.52	23.44	23.59	
		1	74	23.58	23.53	23.63	
		36	0	22.64	22.57	22.38	22.0±1.0
		36	18	22.59	22.58	22.10	
		36	39	22.45	22.57	22.27	
		75	0	22.47	22.48	22.42	22.0±1.0
	16QAM	1	0	22.88	22.97	22.71	22.5±1.0
		1	38	22.95	22.87	23.19	
		1	74	22.99	22.59	23.03	
		36	0	21.94	21.58	21.38	21.5±1.0
		36	18	21.94	21.58	21.38	
		36	39	21.95	21.57	21.27	
		75	0	21.48	21.64	21.50	21.0±1.0
Bandwidth	Modulation	RB size	RB offset	Channel/Frequency			Tune up
				20050/1720	20175/1732.5	20300/1745	
20MHz	QPSK	1	0	23.65	23.54	23.46	23.0±1.0
		1	50	23.36	23.34	23.50	
		1	99	23.69	23.66	23.63	
		50	0	22.42	22.47	22.58	22.0±1.0
		50	25	22.42	22.47	22.59	
		50	50	22.53	22.47	22.38	
		100	0	22.43	22.42	22.50	22.0±1.0
	16QAM	1	0	23.17	22.66	22.65	22.5±1.0
		1	50	22.97	22.90	23.32	
		1	99	22.90	22.89	23.27	
		50	0	21.69	21.54	21.75	21.0±1.0
		50	25	21.68	21.54	21.75	
		50	50	21.58	21.45	21.48	
		100	0	21.47	21.42	21.50	21.0±1.0



3. LTE Band 5 Conducted Power Test Verdict:

LTE FDD Band 5 ANT 3				Conducted Power(dBm)			Tune up
Bandwidth	Modulation	RB size	RB offset	Channel/Frequency			
				20407/824.7	20525/836.5	20643/848.3	
1.4MHz	QPSK	1	0	23.53	23.68	23.49	23.0±1.0
		1	3	23.61	23.42	23.55	
		1	5	23.62	23.53	23.44	
		3	0	22.51	22.28	22.45	22.0±1.0
		3	2	22.51	22.24	22.42	
		3	3	22.37	22.33	22.57	
	16QAM	6	0	22.36	22.31	22.44	22.0±1.0
		1	0	22.81	22.76	22.65	22.5±1.0
		1	3	22.65	22.70	22.54	
		1	5	22.69	22.68	22.78	
		21.0±1.0	3	0	21.59	21.45	21.41
			3	2	21.71	21.59	21.48
3	3		21.45	21.41	21.42		
21.0±1.0	6	0	21.57	21.73	21.36		
Bandwidth	Modulation	RB size	RB offset	Channel/Frequency			Tune up
				20415/825.5	20525/836.5	20635/847.5	
3MHz	QPSK	1	0	23.26	23.23	23.27	23.0±1.0
		1	7	23.47	23.28	23.36	
		1	14	23.44	23.22	23.51	
		22.0±1.0	8	0	22.63	22.44	22.52
			8	4	22.62	22.35	22.53
			8	7	22.56	22.32	22.58
	22.0±1.0	15	0	22.58	22.40	22.50	
	16QAM	1	0	22.81	22.66	22.31	22.5±1.0
		1	7	22.68	22.76	22.43	
		1	14	22.76	22.59	22.73	
		21.0±1.0	8	0	21.48	21.61	21.39
			8	4	21.46	21.61	21.39
8			7	21.55	21.66	21.51	
21.0±1.0	15	0	21.40	21.30	21.44		



LTE FDD Band 5 ANT 3				Conducted Power(dBm)			
Bandwidth	Modulation	RB size	RB offset	Channel/Frequency			Tune up
				20425/826.5	20525/836.5	20625/846.5	
5MHz	QPSK	1	0	23.15	23.27	23.29	23.0±1.0
		1	13	23.16	23.37	22.96	
		1	24	23.53	23.06	23.40	
		12	0	22.34	22.36	22.30	22.0±1.0
		12	6	22.34	22.37	22.30	
		12	13	22.20	22.38	22.37	
	25	0	22.33	22.34	22.29	22.0±1.0	
	16QAM	1	0	22.06	22.21	22.09	22.0±1.0
		1	13	22.14	22.30	22.16	
		1	24	22.09	22.08	22.07	
		12	0	21.31	21.37	21.20	21.0±1.0
		12	6	21.43	21.40	21.32	
		12	13	21.24	21.31	21.25	
	25	0	21.28	21.34	21.24	21.0±1.0	
Bandwidth	Modulation	RB size	RB offset	Channel/Frequency			Tune up
				20450/829.0	20525/836.5	20600/844.0	
10MHz	QPSK	1	0	23.48	23.53	23.41	23.0±1.0
		1	25	23.31	23.31	23.22	
		1	49	23.43	23.59	23.43	
		25	0	22.37	22.41	22.43	22.0±1.0
		25	13	22.41	22.42	22.33	
		25	25	22.38	22.39	22.31	
	50	0	22.37	22.43	22.32	22.0±1.0	
	16QAM	1	0	22.40	22.59	22.42	22.5±1.0
		1	25	22.58	22.48	22.68	
		1	49	22.42	22.76	22.29	
		25	0	21.50	21.50	21.26	21.0±1.0
		25	13	21.50	21.45	21.26	
		25	25	21.49	21.48	21.34	
	50	0	21.29	21.20	21.31	21.0±1.0	



4. LTE Band 7 Conducted Power Test Verdict:

LTE FDD Band 7 ANT 3				Conducted Power(dBm)			Tune up
Bandwidth	Modulation	RB size	RB offset	Channel/Frequency			
				20775/2502.5	21100/2535.0	21425/2567.5	
5MHz	QPSK	1	0	23.16	23.15	23.18	23.0±1.0
		1	13	23.16	23.20	23.06	
		1	24	23.34	23.25	23.21	
		12	0	22.22	22.32	22.37	22.0±1.0
		12	6	22.24	22.33	22.30	
		12	13	22.33	22.28	22.28	
		25	0	22.38	22.28	22.28	22.0±1.0
	16QAM	1	0	22.24	22.31	22.53	22.0±1.0
		1	13	22.18	22.34	22.48	
		1	24	22.33	22.45	22.44	
		12	0	21.41	21.39	21.28	21.0±1.0
		12	6	21.38	21.48	21.35	
		12	13	21.37	21.36	21.20	
		25	0	21.27	21.41	21.25	21.0±1.0
Bandwidth	Modulation	RB size	RB offset	Channel/Frequency			Tune up
10MHz	QPSK	1	0	23.28	23.24	23.31	23.0±1.0
		1	25	23.46	23.18	23.22	
		1	49	23.41	23.51	23.60	
		25	0	22.39	22.32	22.27	22.0±1.0
		25	13	22.40	22.33	22.29	
		25	25	22.39	22.28	22.40	
		50	0	22.37	22.31	22.27	22.0±1.0
	16QAM	1	0	22.73	22.90	22.84	22.5±1.0
		1	25	22.71	22.78	22.83	
		1	49	22.92	22.84	22.96	
		25	0	21.39	21.41	21.38	21.0±1.0
		25	13	21.39	21.42	21.38	
		25	25	21.41	21.47	21.45	
		50	0	21.51	21.17	21.33	21.0±1.0



LTE FDD Band 7 ANT 3				Conducted Power(dBm)			
Bandwidth	Modulation	RB size	RB offset	Channel/Frequency			Tune up
				20825/2507.5	21100/2535.0	21375/2562.5	
15MHz	QPSK	1	0	23.32	23.24	23.45	23.0±1.0
		1	38	23.45	23.56	23.21	
		1	74	23.36	23.29	23.23	
		36	0	22.38	22.48	22.47	22.0±1.0
		36	18	22.41	22.41	22.36	
		36	39	22.28	22.54	22.21	
		75	0	22.39	22.28	22.19	22.0±1.0
	16QAM	1	0	22.64	22.69	22.55	22.5±1.0
		1	38	22.32	22.75	22.64	
		1	74	22.80	22.58	22.42	
		36	0	21.58	21.48	21.51	21.0±1.0
		36	18	21.65	21.35	21.36	
		36	39	21.41	21.62	21.42	
		75	0	21.45	21.27	21.36	21.0±1.0
Bandwidth	Modulation	RB size	RB offset	Channel/Frequency			Tune up
				20850/2510	21100/2535.0	21350/2560	
20MHz	QPSK	1	0	23.55	23.42	23.51	23.0±1.0
		1	50	23.36	23.19	23.24	
		1	99	23.66	23.37	23.39	
		50	0	22.44	22.28	22.32	22.0±1.0
		50	25	22.45	22.29	22.24	
		50	50	22.47	22.27	22.27	
		100	0	22.41	22.20	22.21	
	16QAM	1	0	22.53	22.44	22.55	22.5±1.0
		1	50	22.89	22.86	22.77	
		1	99	22.89	22.51	22.70	
		50	0	21.48	21.32	21.38	21.0±1.0
		50	25	21.53	21.38	21.44	
		50	50	21.60	21.28	21.32	
		100	0	21.39	21.24	21.37	



5. LTE Band 12 Conducted Power Test Verdict:

LTE FDD Band 12 ANT 3				Conducted Power(dBm)			
Bandwidth	Modulation	RB size	RB offset	Channel/Frequency			Tune up
				23017/699.7	23095/707.5	23173/715.3	
1.4MHz	QPSK	1	0	23.60	23.32	23.21	23.0±1.0
		1	3	23.62	23.27	23.33	
		1	5	23.53	23.42	23.30	
		3	0	22.52	22.51	22.39	22.0±1.0
		3	2	22.51	22.52	22.52	
		3	3	22.43	22.34	22.57	
	6	0	22.47	22.43	22.48	22.0±1.0	
	16QAM	1	0	22.71	22.51	22.40	22.0±1.0
		1	3	22.45	22.48	22.53	
		1	5	22.57	22.69	22.64	
		3	0	21.51	21.46	21.39	21.0±1.0
		3	2	21.50	21.42	21.27	
		3	3	21.47	21.34	21.32	
	6	0	21.31	21.40	21.36	21.0±1.0	
Bandwidth	Modulation	RB size	RB offset	Channel/Frequency			Tune up
				23025/700.5	23095/707.5	23165/714.5	
3MHz	QPSK	1	0	23.28	23.26	23.65	23.0±1.0
		1	7	23.42	23.37	23.48	
		1	14	23.30	23.60	23.43	
		8	0	22.56	22.45	22.45	22.0±1.0
		8	4	22.56	22.46	22.45	
		8	7	22.52	22.39	22.42	
	15	0	22.56	22.48	22.52	22.0±1.0	
	16QAM	1	0	22.78	22.56	22.66	22.5±1.0
		1	7	22.65	22.79	22.75	
		1	14	22.71	22.70	22.81	
		8	0	21.44	21.40	21.35	21.0±1.0
		8	4	21.44	21.56	21.42	
		8	7	21.32	21.55	21.27	
	15	0	21.40	21.61	21.33	21.0±1.0	



LTE FDD Band 12 ANT 3				Conducted Power(dBm)			
Bandwidth	Modulation	RB size	RB offset	Channel/Frequency			Tune up
				23035/701.5	23095/707.5	23155/713.5	
5MHz	QPSK	1	0	23.26	23.24	23.13	23.0±1.0
		1	13	23.51	23.33	23.21	
		1	24	23.42	23.35	23.31	
		12	0	22.38	22.36	22.30	22.0±1.0
		12	6	22.49	22.39	22.20	
		12	13	22.33	22.37	22.39	
	16QAM	25	0	22.35	22.35	22.35	22.0±1.0
		1	0	22.58	22.63	22.55	22.5±1.0
		1	13	22.42	22.52	22.62	
		1	24	22.59	22.78	22.47	
		12	0	21.48	21.31	21.42	21.0±1.0
		12	6	21.49	21.31	21.39	
		12	13	21.32	21.27	21.48	
		25	0	21.30	21.40	21.34	21.0±1.0
Bandwidth	Modulation	RB size	RB offset	Channel/Frequency			Tune up
				23060/704.0	23095/707.5	23130/711.0	
10MHz	QPSK	1	0	23.30	23.18	23.13	23.0±1.0
		1	25	23.22	23.13	23.35	
		1	49	23.54	23.28	23.33	
		25	0	22.41	22.34	22.52	22.0±1.0
		25	13	22.50	22.35	22.53	
		25	25	22.35	22.37	22.31	
	16QAM	50	0	22.42	22.32	22.49	22.0±1.0
		1	0	22.64	22.69	22.55	22.0±1.0
		1	25	22.56	22.58	22.73	
		1	49	22.72	22.46	22.61	
		25	0	21.43	21.38	21.34	21.0±1.0
		25	13	21.41	21.40	21.44	
		25	25	21.46	21.42	21.26	
		50	0	21.32	21.37	21.40	21.0±1.0



6. LTE Band 13 Conducted Power Test Verdict:

LTE FDD Band 13 ANT 3				Conducted Power(dBm)			Tune up
Bandwidth	Modulation	RB size	RB offset	Channel/Frequency			
				23205/779.5	23230/782.0	23255/784.5	
5MHz	QPSK	1	0	23.38	23.37	23.47	23.0±1.0
		1	13	23.47	23.25	23.20	
		1	24	23.39	23.30	23.22	
		12	0	22.55	22.47	22.60	22.0±1.0
		12	6	22.56	22.49	22.50	
		12	13	22.52	22.50	22.51	
	16QAM	25	0	22.53	22.54	22.52	22.0±1.0
		1	0	22.56	22.60	22.61	22.0±1.0
		1	13	22.52	22.48	22.78	
		1	24	22.69	22.51	22.64	
		12	0	21.45	21.46	21.46	21.0±1.0
		12	6	21.45	21.47	21.44	
		12	13	21.41	21.46	21.41	
		25	0	21.46	21.46	21.58	21.0±1.0
Bandwidth	Modulation	RB size	RB offset	Channel/Frequency			Tune up
10MHz	QPSK			/	23230/782.0	/	23.0±1.0
		1	0	/	23.49	/	
		1	25	/	23.36	/	
		1	49	/	23.55	/	22.0±1.0
		25	0	/	22.48	/	
		25	13	/	22.51	/	
		25	25	/	22.48	/	
	50	0	/	22.49	/	22.0±1.0	
	16QAM	1	0	/	22.72	/	22.0±1.0
		1	25	/	22.58	/	
		1	49	/	22.67	/	
		25	0	/	21.53	/	21.0±1.0
		25	13	/	21.53	/	
		25	25	/	21.48	/	
50		0	/	21.51	/	21.0±1.0	



7. LTE Band 17 Conducted Power Test Verdict:

LTE FDD Band 17 ANT 3				Conducted Power(dBm)			Tune up
Bandwidth	Modulation	RB size	RB offset	Channel/Frequency			
				23755/706.5	23790/710.0	23825/713.5	
5MHz	QPSK	1	0	23.10	23.19	22.87	23.0±1.0
		1	13	23.21	23.14	23.07	
		1	24	23.18	23.02	23.25	
		12	0	22.30	22.36	22.37	22.0±1.0
		12	6	22.30	22.37	22.39	
		12	13	22.27	22.36	22.42	
		25	0	22.29	22.30	22.27	22.0±1.0
	16QAM	1	0	22.41	22.42	22.42	22.0±1.0
		1	13	22.38	22.61	22.34	
		1	24	22.51	22.48	22.52	
		12	0	21.39	21.23	21.39	21.0±1.0
		12	6	21.42	21.41	21.42	
		12	13	21.29	21.39	21.28	
		25	0	21.33	21.45	21.39	21.0±1.0
Bandwidth	Modulation	RB size	RB offset	Channel/Frequency			Tune up
10MHz	QPSK	1	0	23.41	23.53	23.47	23.0±1.0
		1	25	23.24	23.34	23.30	
		1	49	23.56	23.46	23.38	
		25	0	22.46	22.45	22.41	22.0±1.0
		25	13	22.39	22.35	22.42	
		25	25	22.37	22.38	22.33	
		50	0	22.42	22.35	22.39	22.0±1.0
	16QAM	1	0	22.53	22.44	22.49	22.0±1.0
		1	25	22.68	22.62	22.56	
		1	49	23.47	22.51	22.64	
		25	0	21.50	21.48	21.45	21.0±1.0
		25	13	21.56	21.52	21.49	
		25	25	21.51	21.46	21.47	
		50	0	21.35	21.41	21.36	21.0±1.0



8. LTE Band 25 Conducted Power Test Verdict:

LTE FDD Band 25 ANT 3				Conducted Power(dBm)			Tune up
Bandwidth	Modulation	RB size	RB offset	Channel/Frequency			
				26047/1850.7	26365/1882.5	26683/1914.3	
1.4MHz	QPSK	1	0	23.64	23.56	23.49	23.0±1.0
		1	3	23.59	23.51	23.43	
		1	5	23.67	23.50	23.56	
		3	0	22.55	22.63	22.65	22.5±1.0
		3	2	22.74	22.75	22.61	
		3	3	22.67	22.83	22.78	
	6	0	22.64	22.64	22.62	22.0±1.0	
	16QAM	1	0	22.88	22.76	22.69	22.5±1.0
		1	3	22.70	22.81	22.73	
		1	5	23.30	22.79	22.81	
		3	0	21.68	21.69	21.58	21.0±1.0
		3	2	21.61	21.52	21.64	
		3	3	21.73	21.60	21.61	
		6	0	21.56	21.50	21.43	21.0±1.0
Bandwidth	Modulation	RB size	RB offset	Channel/Frequency			Tune up
				26055/1851.5	26365/1882.5	26675/1913.5	
3MHz	QPSK	1	0	23.84	23.78	23.59	23.5±1.0
		1	7	23.68	23.81	23.84	
		1	14	23.61	23.79	23.76	
		8	0	22.76	22.67	22.81	22.5±1.0
		8	4	22.76	22.68	22.74	
		8	7	22.69	22.73	22.78	
		15	0	22.69	22.73	22.73	22.0±1.0
	16QAM	1	0	22.98	23.00	22.83	22.5±1.0
		1	7	23.06	22.83	22.96	
		1	14	23.01	22.95	22.79	
		8	0	21.73	21.44	21.64	21.0±1.0
		8	4	21.63	21.64	21.71	
		8	7	21.72	21.59	21.62	
		15	0	21.63	21.63	21.60	21.0±1.0



LTE FDD Band 25 ANT 3				Conducted Power(dBm)			
Bandwidth	Modulation	RB size	RB offset	Channel/Frequency			Tune up
				26065/1852.5	26365/1882.5	26665/1912.5	
5MHz	QPSK	1	0	23.84	23.56	23.63	23.5±1.0
		1	13	23.61	23.60	23.52	
		1	24	23.67	23.67	23.59	
		12	0	22.67	22.64	22.61	22.5±1.0
		12	6	22.80	22.64	22.73	
		12	13	22.59	22.61	22.64	
	25	0	22.52	22.59	22.67	22.0±1.0	
	16QAM	1	0	22.86	22.75	22.51	22.5±1.0
		1	13	22.73	22.58	22.43	
		1	24	22.87	22.86	22.68	
		12	0	21.79	21.71	21.65	21.5±1.0
		12	6	21.79	21.72	21.62	
		12	13	21.72	21.70	21.67	
		25	0	21.66	21.52	21.59	21.0±1.0
Bandwidth	Modulation	RB size	RB offset	Channel/Frequency			Tune up
				26090/1855.0	26365/1882.5	26640/1910.0	
10MHz	QPSK	1	0	23.61	23.57	23.52	23.0±1.0
		1	25	23.74	23.68	23.56	
		1	49	23.75	23.59	23.62	
		25	0	22.80	22.64	22.71	22.5±1.0
		25	13	22.81	22.65	22.75	
		25	25	22.70	22.63	22.58	
		50	0	22.62	22.70	22.61	22.0±1.0
	16QAM	1	0	22.81	22.79	22.85	22.5±1.0
		1	25	22.69	22.65	22.69	
		1	49	22.58	22.67	22.73	
		25	0	21.46	21.74	21.58	21.0±1.0
		25	13	21.63	21.72	21.55	
		25	25	21.73	21.75	21.67	
		50	0	21.59	21.67	21.61	21.0±1.0



LTE FDD Band 25 ANT 3				Conducted Power(dBm)			
Bandwidth	Modulation	RB size	RB offset	Channel/Frequency			Tune up
				26115/1857.5	26365/1882.5	26615/1907.5	
15MHz	QPSK	1	0	23.61	23.57	23.52	23.0±1.0
		1	38	23.74	23.68	23.56	
		1	74	23.75	23.59	23.62	
		36	0	22.80	22.64	22.71	22.5±1.0
		36	18	22.81	22.65	22.75	
		36	39	22.70	22.63	22.58	
		75	0	22.62	22.70	22.61	22.0±1.0
	16QAM	1	0	22.81	22.79	22.85	22.5±1.0
		1	38	22.69	22.65	22.69	
		1	74	22.58	22.67	22.73	
		36	0	21.46	21.74	21.58	21.0±1.0
		36	18	21.63	21.72	21.55	
		36	39	21.73	21.75	21.67	
		75	0	21.59	21.67	21.61	21.0±1.0
Bandwidth	Modulation	RB size	RB offset	Channel/Frequency			Tune up
				26140/1860.0	26365/1882.5	26590/1905.0	
20MHz	QPSK	1	0	23.84	23.89	23.77	23.5±1.0
		1	50	23.62	23.74	23.61	
		1	99	23.89	23.90	23.89	
		50	0	22.70	22.68	22.64	22.0±1.0
		50	25	22.70	22.69	22.54	
		50	50	22.71	22.69	22.67	
		100	0	22.71	22.74	22.65	22.0±1.0
	16QAM	1	0	22.78	22.83	22.96	22.5±1.0
		1	50	23.01	22.83	22.62	
		1	99	23.06	23.11	23.15	
		50	0	21.66	21.73	21.62	21.0±1.0
		50	25	21.66	21.74	21.62	
		50	50	21.68	21.65	21.73	
		100	0	21.60	21.61	21.65	21.0±1.0



9. LTE Band 26 Conducted Power Test Verdict:

LTE FDD Band 26(Part 22) ANT 3				Conducted Power(dBm)			Tune up
Bandwidth	Modulation	RB size	RB offset	Channel/Frequency			
				26797/824.7	26915/836.5	27033/848.3	
1.4MHz	QPSK	1	0	23.46	23.27	23.24	23.0±1.0
		1	3	23.41	23.21	23.33	
		1	5	23.50	23.36	23.42	
		3	0	22.48	22.46	22.58	22.0±1.0
		3	2	22.46	22.37	22.51	
		3	3	22.42	22.59	22.64	
		6	0	22.41	22.48	22.47	22.0±1.0
	16QAM	1	0	22.58	22.54	22.59	22.0±1.0
		1	3	22.50	22.48	22.58	
		1	5	22.61	22.75	22.65	
		3	0	21.45	21.59	21.51	21.0±1.0
		3	2	21.42	21.25	21.51	
		3	3	21.55	21.46	21.52	
		6	0	21.33	21.44	21.44	21.0±1.0
Bandwidth	Modulation	RB size	RB offset	Channel/Frequency			Tune up
3MHz	QPSK	1	0	23.37	23.51	23.56	23.0±1.0
		1	7	23.33	23.48	23.44	
		1	14	23.29	23.55	23.59	
		8	0	22.50	22.45	22.46	22.0±1.0
		8	4	22.51	22.46	22.49	
		8	7	22.70	22.54	22.50	
		15	0	22.48	22.51	22.45	22.0±1.0
	16QAM	1	0	22.39	22.76	22.50	22.5±1.0
		1	7	22.41	22.47	22.62	
		1	14	22.42	22.72	22.20	
		8	0	21.41	21.24	21.45	21.0±1.0
		8	4	21.42	21.25	21.40	
		8	7	21.44	21.22	21.38	
		15	0	21.49	21.45	21.59	21.0±1.0



LTE FDD Band 26(Part 22) ANT 3				Conducted Power(dBm)			
Bandwidth	Modulation	RB size	RB offset	Channel/Frequency			Tune up
				26815/826.5	26915/836.5	27015/846.5	
5MHz	QPSK	1	0	23.33	23.23	23.21	23.0±1.0
		1	13	23.38	23.32	23.20	
		1	24	23.53	23.30	23.21	
		12	0	22.40	22.40	22.49	22.0±1.0
		12	6	22.40	22.41	22.45	
		12	13	22.39	22.33	22.42	
	25	0	22.34	22.38	22.40	22.0±1.0	
	16QAM	1	0	22.41	22.65	22.35	22.0±1.0
		1	13	22.55	22.48	22.47	
		1	24	22.32	22.42	22.31	
		12	0	21.47	21.45	21.37	21.0±1.0
		12	6	21.33	21.42	21.57	
		12	13	21.39	21.47	21.50	
		25	0	21.40	21.40	21.49	21.0±1.0
Bandwidth	Modulation	RB size	RB offset	Channel/Frequency			Tune up
				26840/829.0	26915/836.5	26990/844.0	
10MHz	QPSK	1	0	23.60	23.33	23.62	23.0±1.0
		1	25	23.61	23.22	23.26	
		1	49	23.40	23.20	23.26	
		25	0	22.44	22.42	22.53	22.0±1.0
		25	13	22.45	22.43	22.54	
		25	25	22.45	22.39	22.51	
		50	0	22.51	22.43	22.45	22.0±1.0
	16QAM	1	0	22.60	22.74	22.49	22.0±1.0
		1	25	22.26	22.62	22.63	
		1	49	22.61	22.68	22.51	
		25	0	21.41	21.51	21.58	21.0±1.0
		25	13	21.49	21.55	21.61	
		25	25	21.44	21.54	21.55	
		50	0	21.41	21.41	21.33	21.0±1.0



LTE FDD Band 26(Part 22) ANT 3				Conducted Power(dBm)			
Bandwidth	Modulation	RB size	RB offset	Channel/Frequency			Tune up
				26865/831.5	26915/836.5	26965/841.5	
15MHz	QPSK	1	0	23.42	23.54	23.35	23.0±1.0
		1	38	23.50	23.28	23.52	
		1	74	23.31	23.44	23.33	
		36	0	22.81	22.65	22.31	22.5±1.0
		36	18	22.79	22.63	22.31	
		36	39	22.72	22.82	22.28	
	75	0	22.43	22.45	22.41	22.0±1.0	
	16QAM	1	0	22.69	22.59	22.45	22.5±1.0
		1	38	22.71	22.61	22.50	
		1	74	22.63	22.78	22.67	
		36	0	21.58	21.63	21.52	21.0±1.0
		36	18	21.59	21.63	21.63	
		36	39	21.49	21.52	21.37	
		75	0	21.41	21.57	21.44	21.0±1.0



LTE FDD Band 26(Part 90) ANT 3				Conducted Power(dBm)			
Bandwidth	Modulation	RB size	RB offset	Channel/Frequency			Tune up
				26697/814.7	26740/819.0	26783/823.3	
1.4MHz	QPSK	1	0	23.31	23.46	23.31	23.0±1.0
		1	3	23.59	23.59	23.25	
		1	5	23.56	23.67	23.37	
		3	0	22.27	22.60	22.34	22.0±1.0
		3	2	22.30	22.62	22.46	
		3	3	22.34	22.51	22.48	
	6	0	22.33	22.48	22.47	22.0±1.0	
	16QAM	1	0	22.57	22.58	22.55	22.0±1.0
		1	3	22.62	22.63	22.59	
		1	5	22.56	22.46	22.61	
		3	0	21.43	21.50	21.60	21.0±1.0
		3	2	21.39	21.57	21.59	
		3	3	21.44	21.63	21.47	
	6	0	21.25	21.31	21.30	21.0±1.0	
Bandwidth	Modulation	RB size	RB offset	Channel/Frequency			Tune up
				26705/815.5	26740/819.0	26775/822.5	
3MHz	QPSK	1	0	23.48	23.55	23.43	23.0±1.0
		1	7	23.45	23.51	23.29	
		1	14	23.34	23.49	23.23	
		8	0	22.50	22.65	22.49	22.0±1.0
		8	4	22.55	22.61	22.51	
		8	7	22.41	22.49	22.59	
		15	0	22.41	22.53	22.48	22.0±1.0
	16QAM	1	0	22.80	22.76	22.65	22.5±1.0
		1	7	22.78	22.95	22.43	
		1	14	22.73	22.93	22.57	
		8	0	21.66	21.82	21.41	21.0±1.0
		8	4	21.66	21.81	21.39	
		8	7	21.65	21.74	21.32	
		15	0	21.39	21.40	21.50	21.0±1.0



LTE FDD Band 26(Part 90) ANT 3				Conducted Power(dBm)			
Bandwidth	Modulation	RB size	RB offset	Channel/Frequency			Tune up
				26715/816.5	26740/819.0	26765/821.5	
5MHz	QPSK	1	0	23.39	23.43	23.41	23.0±1.0
		1	13	23.24	23.53	23.30	
		1	24	23.29	23.30	23.46	
		12	0	22.35	22.64	22.50	22.0±1.0
		12	6	22.35	22.53	22.52	
		12	13	22.55	22.48	22.47	
	25	0	22.52	22.42	22.49	22.0±1.0	
	16QAM	1	0	22.45	22.45	22.57	22.0±1.0
		1	13	22.67	22.61	22.42	
		1	24	22.42	22.32	22.63	
		12	0	21.44	21.64	21.36	21.0±1.0
		12	6	21.48	21.51	21.43	
		12	13	21.65	21.55	21.28	
		25	0	21.52	21.35	21.40	21.0±1.0
Bandwidth	Modulation	RB size	RB offset	Channel/Frequency			Tune up
10MHz	QPSK	1	0	/	23.51	/	23.0±1.0
		1	25	/	23.59	/	
		1	49	/	23.45	/	
		25	0	/	22.52	/	22.0±1.0
		25	13	/	22.52	/	
		25	25	/	22.54	/	
		50	0	/	22.54	/	22.0±1.0
	16QAM	1	0	/	22.78	/	22.5±1.0
		1	25	/	22.82	/	
		1	49	/	22.76	/	
		25	0	/	21.64	/	21.0±1.0
		25	13	/	21.64	/	
		25	25	/	21.57	/	
		50	0	/	21.51	/	21.0±1.0



10. LTE Band 38 Conducted Power Test Verdict:

LTE FDD Band 38 ANT 3				Conducted Power(dBm)			Tune up
Bandwidth	Modulation	RB size	RB offset	Channel/Frequency			
				37775/2572.5	38000/2595.0	38225/2617.5	
5MHz	QPSK	1	0	23.36	23.50	23.61	23.0±1.0
		1	13	23.42	23.46	23.47	
		1	24	23.42	23.58	23.68	
		12	0	22.40	22.39	22.39	22.0±1.0
		12	6	22.36	22.30	22.41	
		12	13	22.49	22.28	22.43	
		25	0	22.25	22.12	22.25	22.0±1.0
	16QAM	1	0	22.51	22.34	22.42	22.0±1.0
		1	13	22.42	22.43	22.27	
		1	24	22.43	22.52	22.30	
		12	0	21.15	21.32	21.09	21.0±1.0
		12	6	21.26	21.11	21.20	
		12	13	21.19	21.21	21.14	
		25	0	21.01	21.15	21.15	20.5±1.0
Bandwidth	Modulation	RB size	RB offset	Channel/Frequency			Tune up
10MHz	QPSK	1	0	23.31	23.26	23.20	23.0±1.0
		1	25	23.28	23.17	23.31	
		1	49	23.20	23.22	23.19	
		25	0	22.13	22.13	22.10	21.5±1.0
		25	13	22.06	22.15	22.10	
		25	25	22.22	22.06	22.14	
		50	0	22.13	22.12	22.07	21.5±1.0
	16QAM	1	0	22.23	22.18	22.32	22.0±1.0
		1	25	22.21	22.07	22.19	
		1	49	22.39	22.24	22.21	
		25	0	21.32	21.25	21.32	21.0±1.0
		25	13	21.16	21.22	21.24	
		25	25	21.25	21.19	21.45	
		50	0	21.17	21.18	21.22	20.5±1.0



LTE FDD Band 38 ANT 3				Conducted Power(dBm)			
Bandwidth	Modulation	RB size	RB offset	Channel/Frequency			Tune up
				37825/2577.5	38000/2595.0	38175/2612.5	
15MHz	QPSK	1	0	23.23	23.28	23.21	23.0±1.0
		1	38	23.35	23.32	23.26	
		1	74	23.25	23.13	23.08	
		36	0	22.26	22.22	22.14	22.0±1.0
		36	18	22.26	22.28	22.18	
		36	39	22.15	22.17	22.11	
		75	0	22.17	22.07	22.08	21.5±1.0
	16QAM	1	0	22.35	22.27	22.41	22.0±1.0
		1	38	22.41	22.32	22.34	
		1	74	22.27	22.18	22.38	
		36	0	21.42	21.25	21.12	21.0±1.0
		36	18	21.27	21.34	21.23	
		36	39	21.35	21.25	21.15	
		75	0	21.24	21.20	21.10	20.5±1.0
Bandwidth	Modulation	RB size	RB offset	Channel/Frequency			Tune up
				37850/2580.0	38000/2595.0	38150/2610.0	
20MHz	QPSK	1	0	23.40	23.43	23.51	23.0±1.0
		1	50	23.21	23.51	23.47	
		1	99	23.36	23.26	23.39	
		50	0	22.13	22.17	22.21	21.5±1.0
		50	25	22.15	22.19	22.23	
		50	50	22.24	22.13	22.15	
		100	0	22.16	22.08	22.09	21.5±1.0
	16QAM	1	0	22.30	22.49	22.43	22.0±1.0
		1	50	22.50	22.52	22.46	
		1	99	22.53	22.53	22.78	
		50	0	21.17	21.17	21.33	21.0±1.0
		50	25	21.17	21.18	21.34	
		50	50	21.22	21.13	21.29	
		100	0	21.21	21.15	21.21	20.5±1.0



11. LTE Band 41 Conducted Power Test Verdict:

LTE FDD Band 41 ANT 3				Conducted Power(dBm)			
Bandwidth	Modulation	RB size	RB offset	Channel/Frequency			Tune up
				40265/2557.5	40740/2605.0	41215/2652.5	
5MHz	QPSK	1	0	22.67	22.94	22.84	22.5±1.0
		1	13	22.85	22.88	22.84	
		1	24	22.75	22.87	22.88	
		12	0	21.93	21.88	21.99	21.5±1.0
		12	6	21.94	21.88	22.00	
		12	13	21.91	21.90	21.94	
	25	0	21.98	21.95	21.98	21.5±1.0	
	16QAM	1	0	22.02	22.23	22.07	22.0±1.0
		1	13	21.86	22.38	22.08	
		1	24	21.99	22.04	22.12	
		12	0	20.95	20.82	20.94	20.5±1.0
		12	6	20.95	20.82	20.76	
		12	13	21.01	20.74	20.80	
		25	0	21.01	21.04	20.82	20.5±1.0
Bandwidth	Modulation	RB size	RB offset	Channel/Frequency			Tune up
				40290/2560.0	40740/2605.0	41190/2650.0	
10MHz	QPSK	1	0	22.87	22.84	22.78	22.5±1.0
		1	25	22.92	22.89	22.83	
		1	49	22.83	22.92	22.83	
		25	0	22.07	22.00	21.99	21.5±1.0
		25	13	22.08	22.01	22.00	
		25	25	21.99	21.97	22.03	
	50	0	22.03	21.94	21.96	21.5±1.0	
	16QAM	1	0	22.49	22.25	22.36	22.0±1.0
		1	25	22.51	22.20	22.50	
		1	49	22.48	22.47	22.37	
		25	0	21.20	21.10	21.09	20.5±1.0
		25	13	21.21	21.28	21.19	
		25	25	21.23	21.10	21.07	
		50	0	21.16	21.08	21.09	20.0±1.0



LTE FDD Band 41 ANT 3				Conducted Power(dBm)			
Bandwidth	Modulation	RB size	RB offset	Channel/Frequency			Tune up
				40315/2562.5	40740/2605.0	41165/2647.5	
15MHz	QPSK	1	0	22.95	22.87	23.00	22.5±1.0
		1	38	23.09	23.02	23.03	
		1	74	23.01	22.95	22.98	
		36	0	22.03	21.98	22.16	21.5±1.0
		36	18	22.14	21.96	22.15	
		36	39	22.14	21.99	22.08	
		75	0	21.99	22.01	22.10	21.5±1.0
	16QAM	1	0	21.95	22.09	22.10	22.0±1.0
		1	38	22.15	22.13	22.15	
		1	74	22.04	22.05	22.10	
		36	0	21.25	21.31	21.19	21.0±1.0
		36	18	21.14	21.24	21.15	
		36	39	21.21	21.12	21.32	
		75	0	21.11	21.10	21.11	20.5±1.0
Bandwidth	Modulation	RB size	RB offset	Channel/Frequency			Tune up
				40340/2565.0	40740/2605.0	41140/2645.0	
20MHz	QPSK	1	0	23.31	23.41	23.38	23.0±1.0
		1	50	23.18	23.26	23.21	
		1	99	23.26	23.25	23.30	
		50	0	22.16	22.25	22.21	21.5±1.0
		50	25	22.17	22.18	22.06	
		50	50	22.11	22.16	22.18	
		100	0	22.03	22.03	22.07	21.5±1.0
	16QAM	1	0	22.51	22.51	22.57	22.0±1.0
		1	50	22.50	22.62	22.56	
		1	99	22.47	22.45	22.41	
		50	0	21.39	21.32	21.41	21.0±1.0
		50	25	21.20	21.28	21.20	
		50	50	21.34	21.17	21.35	
		100	0	21.14	21.12	21.28	20.5±1.0



12. LTE Band 66 Conducted Power Test Verdict:

LTE FDD Band 66 ANT 3				Conducted Power(dBm)			
Bandwidth	Modulation	RB size	RB offset	Channel/Frequency			Tune up
				131979/1710.7	132322/1745.0	132665/1779.3	
1.4MHz	QPSK	1	0	23.65	23.41	23.43	23.0±1.0
		1	3	23.64	23.34	23.31	
		1	5	23.57	23.35	23.33	
		3	0	22.46	22.53	22.26	22.0±1.0
		3	2	22.45	22.53	22.19	
		3	3	22.32	22.68	22.31	
		6	0	22.32	22.44	22.18	22.0±1.0
	16QAM	1	0	22.53	22.63	22.41	22.5±1.0
		1	3	22.66	22.61	22.30	
		1	5	22.80	22.81	22.59	
		3	0	21.40	21.50	21.26	21.0±1.0
		3	2	21.48	21.45	21.34	
		3	3	21.43	21.47	21.25	
		6	0	21.24	21.32	21.21	21.0±1.0
Bandwidth	Modulation	RB size	RB offset	Channel/Frequency			Tune up
				131987/1711.5	12322/1745.0	132657/1778.5	
3MHz	QPSK	1	0	23.32	23.39	23.19	23.0±1.0
		1	7	23.33	23.58	23.42	
		1	14	23.54	23.42	23.20	
		8	0	22.35	22.55	22.21	22.0±1.0
		8	4	22.43	22.51	22.33	
		8	7	22.34	22.46	22.17	
		15	0	22.36	22.44	22.13	22.0±1.0
	16QAM	1	0	22.76	22.76	22.46	22.5±1.0
		1	7	22.57	22.59	22.65	
		1	14	22.81	22.77	22.64	
		8	0	21.52	21.46	21.33	21.0±1.0
		8	4	21.51	21.58	21.30	
		8	7	21.50	21.52	21.43	
		15	0	21.38	21.41	21.22	21.0±1.0



LTE FDD Band 66 ANT 3				Conducted Power(dBm)			
Bandwidth	Modulation	RB size	RB offset	Channel/Frequency			Tune up
				131997/1712.5	132322/1745.0	132647/1777.5	
5MHz	QPSK	1	0	23.27	23.13	23.08	23.0±1.0
		1	13	23.23	23.35	23.27	
		1	24	23.24	23.33	23.15	
		12	0	22.37	22.41	22.32	22.0±1.0
		12	6	22.38	22.42	22.24	
		12	13	22.35	22.39	22.22	
		25	0	22.36	22.42	22.27	22.0±1.0
	16QAM	1	0	22.34	22.37	22.41	22.5±1.0
		1	13	22.28	22.29	22.27	
		1	24	22.37	22.45	22.33	
		12	0	21.26	21.34	21.18	21.0±1.0
		12	6	21.42	21.34	21.24	
		12	13	21.33	21.41	21.26	
		25	0	21.21	21.29	21.15	21.0±1.0
Bandwidth	Modulation	RB size	RB offset	Channel/Frequency			Tune up
				132022/1715.0	132322/1745.0	132622/1775.0	
10MHz	QPSK	1	0	23.37	23.40	23.31	23.0±1.0
		1	25	23.34	23.57	23.46	
		1	49	23.46	23.65	23.52	
		25	0	22.40	22.55	22.37	22.0±1.0
		25	13	22.41	22.56	22.45	
		25	25	22.43	22.44	22.34	
		50	0	22.34	22.45	22.38	22.0±1.0
	16QAM	1	0	22.97	22.83	22.78	22.5±1.0
		1	25	22.91	23.16	22.93	
		1	49	22.83	23.10	22.87	
		25	0	21.24	21.48	21.39	21.0±1.0
		25	13	21.32	21.48	21.45	
		25	25	21.30	21.43	21.42	
		50	0	21.27	21.39	21.41	21.0±1.0



LTE FDD Band 66 ANT 3				Conducted Power(dBm)			
Bandwidth	Modulation	RB size	RB offset	Channel/Frequency			Tune up
				132047/1717.5	132322/1745.0	132597/1772.5	
15MHz	QPSK	1	0	23.30	23.46	23.41	23.0±1.0
		1	38	23.47	23.48	23.24	
		1	74	23.42	23.43	23.33	
		36	0	22.41	22.39	22.51	22.0±1.0
		36	18	22.33	22.47	22.52	
		36	39	22.28	22.24	22.46	
		75	0	22.22	22.31	22.30	22.0±1.0
	16QAM	1	0	22.48	22.51	22.43	22.5±1.0
		1	38	22.56	22.68	22.37	
		1	74	22.51	22.43	22.30	
		36	0	21.35	21.57	21.52	21.0±1.0
		36	18	21.54	21.61	21.52	
		36	39	21.42	21.45	21.45	
		75	0	21.51	21.48	21.41	21.0±1.0
Bandwidth	Modulation	RB size	RB offset	Channel/Frequency			Tune up
				132072/1720.0	132322/1745.0	132572/1770.0	
20MHz	QPSK	1	0	23.49	23.52	23.31	23.0±1.0
		1	50	23.32	23.46	23.22	
		1	99	23.58	23.61	23.51	
		50	0	22.36	22.56	22.32	22.0±1.0
		50	25	22.37	22.58	22.36	
		50	50	22.42	22.40	22.42	
		100	0	22.41	22.45	22.27	22.0±1.0
	16QAM	1	0	22.53	22.59	22.33	22.5±1.0
		1	50	22.56	22.63	22.42	
		1	99	22.42	22.71	22.55	
		50	0	21.47	21.64	22.41	21.0±1.0
		50	25	21.48	21.58	21.29	
		50	50	21.40	21.48	21.32	
		100	0	21.35	21.51	21.29	21.0±1.0



7.5 WIFI Conducted Power

Wi-Fi 2.4G Output power ANT 2

2.4G WI-FI Channel/Freq.(MHz)	Output Power (dBm)		
	802.11b	802.11g	802.11n(HT20)
1/2412.0	15.08	15.02	14.00
6/2437.0	15.74	14.84	14.59
11/2462.0	16.05	14.87	14.69

2.4G WI-FI Channel/Freq.(MHz)	Output Power (dBm)
	802.11n(HT40)
3/2422.0	13.83
6/2437.0	13.37
9/2452.0	14.05

Wi-Fi U-NII-1 Output power ANT 2

Channel/Freq.(MHz)	Output Power (dBm)		
	802.11 a	802.11 n20	802.11 ac20
36/5180.0	7.93	6.57	6.35
44/5220.0	7.88	6.64	6.42
48/5240.0	8.63	7.30	7.12

Channel/Freq.(MHz)	Output Power (dBm)	
	802.11 n40	802.11 ac40
38/5190.0	6.25	6.02
46/5230.0	6.20	6.30

Channel/Freq.(MHz)	Output Power (dBm)
	802.11 ac80
42/5210.0	6.39



Wi-Fi U-NII-2A Output power ANT 2

Channel/Freq.(MHz)	Output Power (dBm)		
	802.11 a	802.11 n20	802.11 ac20
52/5260.0	8.31	7.00	7.49
60/5300.0	8.34	7.16	7.53
64/5320.0	8.42	6.97	7.40

Channel/Freq.(MHz)	Output Power (dBm)	
	802.11 n40	802.11 ac40
54/5270.0	7.42	7.29
62/5310.0	7.58	7.11

Channel/Freq.(MHz)	Output Power (dBm)
	802.11 ac80
58/5290.0	7.06

Wi-Fi U-NII-2C Output power ANT 2

Channel/Freq.(MHz)	Output Power (dBm)		
	802.11 a	802.11 n20	802.11 ac20
100/5500.0	7.80	6.54	7.01
120/5600.0	8.93	7.59	8.14
140/5700.0	10.13	8.84	9.47

Channel/Freq.(MHz)	Output Power (dBm)	
	802.11 n40	802.11 ac40
102/5510.0	6.51	6.42
118/5590.0	6.95	6.93
134/5670.0	6.79	6.78

Channel/Freq.(MHz)	Output Power (dBm)
	802.11 ac80
106/5530.0	6.83
122/5610.0	6.51



Wi-Fi U-NII-3 Output power ANT 2

Channel/Freq.(MHz)	Output Power (dBm)		
	802.11 a	802.11 n20	802.11 ac20
149/5745.0	10.00	8.69	8.47
157/5785.0	9.29	7.91	7.74
165/5825.0	8.57	6.99	7.08

Channel/Freq.(MHz)	Output Power (dBm)	
	802.11 n40	802.11 ac40
151/5755.0	8.32	8.33
159/5795.0	7.69	7.69

Channel/Freq.(MHz)	Output Power (dBm)
	802.11 ac80
155/5775.0	8.19

7.6 Bluetooth Output Power ANT 2

Channel	Frequency (MHz)	BT Output Power(dBm)		
		GFSK	$\pi/4$ -DQPSK	8-DPSK
CH 0	2402	8.68	8.26	8.45
CH 39	2441	10.04	9.52	9.74
CH 78	2480	9.03	8.72	8.77

Channel	Frequency (MHz)	BLE Output Power(dBm)	
		1M(GFSK)	2M(GFSK)
CH 0	2402	4.40	4.58
CH 19	2440	6.19	6.24
CH 39	2480	6.22	6.36

Note:

1. Per KDB248227 D01 v02r02, choose the highest output power channel to test SAR and determine further SAR exclusion
2. For each frequency band, testing at higher data rates and higher order modulations is not required when the maximum average output power for each of these configurations is less than 1/4dB higher than those measured at lowest data rate
3. Per KDB248227 D01 v02r02, 802.11g /11n-HT20/11n-HT40 is not required. . When the highest reported SAR for DSSS is adjusted by the ratio of OFDM to DSSS specified maximum output power and the adjusted SAR is $\leq 1.2W/Kg$. Thus the SAR can be excluded.

8. Antenna Location:



Antenna	Test Band
ANT 2	2.4GWIFI,5GWIFI,BT
ANT 3	GSM850 / 1900,WCDMA Band 2 / 4 / 5, LTE Band 2 / 4 / 5 / 7 / 12 / 13 / 17 / 25 / 26 / 38 / 41 / 66,



Antenna-to-User (Edge Side) distance (mm):

Antenna	Front	Back	Left	Right	Top	Bottom
ANT 2	<25	<25	<25	>25	<25	>25
ANT 3	<25	<25	<25	<25	>25	<25

The Body SAR measurement positions of each band are as below:

Antenna	Front	Back	Left	Right	Top	Bottom
ANT 2 Body	Yes	Yes	Yes	No	Yes	No
ANT 3 Body	Yes	Yes	Yes	Yes	No	Yes

Note:

1. According to KDB 941225 D06 v02r01, when antenna-to-edge>2.5cm, SAR is not required..
2. The other Frequencies were measured at the worst position



9. Scaling Factor calculation

Operation Mode	Channel /Frequency	Output Power(dBm)	Tune up Power in tolerance (dBm)	Max. Tune up(dBm)	Scaling Factor
GSM850 ANT 3	128/824.2	32.80	32.5 ± 1.0	33.50	1.175
	190/836.6	32.42	32.0 ± 1.0	33.00	1.143
	251/848.8	32.45	32.0 ± 1.0	33.00	1.135
GPRS850 (GPRS 2Tx) ANT 3	128/824.2	29.42	29.0 ± 1.0	30.00	1.143
	190/836.6	29.14	28.5 ± 1.0	29.50	1.086
	251/848.8	29.11	28.5 ± 1.0	29.50	1.094
GSM1900 ANT 3	512/1850.2	29.52	29.0 ± 1.0	30.00	1.117
	661/1880.0	29.73	29.0 ± 1.0	30.00	1.064
	810/1909.8	29.72	29.0 ± 1.0	30.00	1.067
GPRS1900 (GPRS 2Tx) ANT 3	512/1850.2	27.20	26.5 ± 1.0	27.50	1.072
	661/1880.0	26.97	26.5 ± 1.0	27.50	1.130
	810/1909.8	27.04	26.5 ± 1.0	27.50	1.112
CDMA BC 0 (RC3 + SO55) ANT 3	1013/824.7	23.58	23.0 ± 1.0	24.00	1.102
	384/836.52	23.63	23.0 ± 1.0	24.00	1.089
	777/848.31	23.34	23.0 ± 1.0	24.00	1.164
CDMA BC 0 RC3 + SO32 (+F-SCH) ANT 3	1013/824.7	23.42	23.0 ± 1.0	24.00	1.143
	384/836.52	23.52	23.0 ± 1.0	24.00	1.117
	777/848.31	23.26	23.0 ± 1.0	24.00	1.186
WCDMA850 ANT 3	4132/826.4	24.05	23.5 ± 1.0	24.50	1.109
	4183/836.6	24.07	23.5 ± 1.0	24.50	1.104
	4233/846.6	24.06	23.5 ± 1.0	24.50	1.107
WCDMA1700 ANT 3	1312/1712.4	23.82	23.5 ± 1.0	24.50	1.169
	1413/1732.6	23.92	23.5 ± 1.0	24.50	1.143
	1513/1752.6	23.87	23.5 ± 1.0	24.50	1.156
WCDMA1900 ANT 3	9262/1852.4	24.09	23.5 ± 1.0	24.50	1.099
	9400/1880.0	23.99	23.5 ± 1.0	24.50	1.125
	9538/1907.6	24.00	23.5 ± 1.0	24.50	1.122
LTE B2 20MHz 1RB#0 ANT 3	18700/1860.0	23.61	23.0 ± 1.0	24.00	1.094
	18900/1880.0	23.59	23.0 ± 1.0	24.00	1.099
	19100/1900.0	23.68	23.0 ± 1.0	24.00	1.076
LTE B2 20MHz 50%RB#0 ANT 3	18700/1860.0	22.47	22.0 ± 1.0	23.00	1.130
	18900/1880.0	22.69	22.0 ± 1.0	23.00	1.074
	19100/1900.0	22.53	22.0 ± 1.0	23.00	1.114
LTE B2 20MHz 100%RB#0 ANT 3	18700/1860.0	22.42	22.0 ± 1.0	23.00	1.143
	18900/1880.0	22.51	22.0 ± 1.0	23.00	1.119
	19100/1900.0	22.54	22.0 ± 1.0	23.00	1.112



LTE B4 20MHz 1RB#0 ANT 3	20050/1720.0	23.65	23.0 ± 1.0	24.00	1.084
	20175/1732.5	23.54	23.0 ± 1.0	24.00	1.112
	20300/1745.0	23.46	23.0 ± 1.0	24.00	1.132
LTE B4 20MHz 50%RB#0 ANT 3	20050/1720.0	22.42	22.0 ± 1.0	23.00	1.143
	20175/1732.5	22.47	22.0 ± 1.0	23.00	1.130
	20300/1745.0	22.58	22.0 ± 1.0	23.00	1.102
LTE B4 20MHz 100%RB#0 ANT 3	20050/1720.0	22.43	22.0 ± 1.0	23.00	1.140
	20175/1732.5	22.42	22.0 ± 1.0	23.00	1.143
	20300/1745.0	22.50	22.0 ± 1.0	23.00	1.122
LTE B5 10MHz 1RB#0 ANT 3	20450/829.0	23.48	23.0 ± 1.0	24.00	1.127
	20525/836.5	23.53	23.0 ± 1.0	24.00	1.114
	20600/844.0	23.41	23.0 ± 1.0	24.00	1.146
LTE B5 10MHz 50%RB#0 ANT 3	20450/829.0	22.37	22.0 ± 1.0	23.00	1.156
	20525/836.5	22.41	22.0 ± 1.0	23.00	1.146
	20600/844.0	22.43	22.0 ± 1.0	23.00	1.140
LTE B7 20MHz 1RB#0 ANT 3	20850/2510.0	23.55	23.0 ± 1.0	24.00	1.109
	21100/2535.0	23.42	23.0 ± 1.0	24.00	1.143
	21350/2560.0	23.51	23.0 ± 1.0	24.00	1.119
LTE B7 20MHz 50%RB#0 ANT 3	20850/2510.0	22.44	22.0 ± 1.0	23.00	1.138
	21100/2535.0	22.28	22.0 ± 1.0	23.00	1.180
	21350/2560.0	22.32	22.0 ± 1.0	23.00	1.169
LTE B7 20MHz 100%RB#0 ANT 3	20850/2510.0	22.41	22.0 ± 1.0	23.00	1.146
	21100/2535.0	22.20	21.5 ± 1.0	22.50	1.072
	21350/2560.0	22.21	21.5 ± 1.0	22.50	1.069
LTE B12 10MHz 1RB#0 ANT 3	23060/704.0	23.30	23.0 ± 1.0	24.00	1.175
	23095/707.5	23.18	22.5 ± 1.0	23.50	1.076
	23130/711.0	23.13	22.5 ± 1.0	23.50	1.089
LTE B12 10MHz 50%RB#0 ANT 3	23060/704.0	22.41	22.0 ± 1.0	23.00	1.146
	23095/707.5	22.34	22.0 ± 1.0	23.00	1.164
	23130/711.0	22.52	22.0 ± 1.0	23.00	1.117
LTE B13 10MHz 1RB#0 ANT 3	23230/782.0	23.49	23.0 ± 1.0	24.00	1.125
LTE B13 10MHz 50%RB#0 ANT 3	23230/782.0	22.48	22.0 ± 1.0	23.00	1.127
LTE B17 10MHz 1RB#0 ANT 3	23780/709.0	23.41	23.0 ± 1.0	24.00	1.146
	23790/710.0	23.53	23.0 ± 1.0	24.00	1.114
	23800/711.0	23.47	23.0 ± 1.0	24.00	1.130



LTE B17 10MHz 50%RB#0 ANT 3	23780/709.0	22.46	22.0 ± 1.0	23.00	1.132
	23790/710.0	22.45	22.0 ± 1.0	23.00	1.135
	23800/711.0	22.41	22.0 ± 1.0	23.00	1.146
LTE B25 20MHz 1RB#0 ANT 3	26140/1860.0	23.84	23.5 ± 1.0	24.50	1.164
	26365/1882.5	23.89	23.5 ± 1.0	24.50	1.151
	26590/1905.0	23.77	23.5 ± 1.0	24.50	1.183
LTE B25 20MHz 50%RB#0 ANT 3	26140/1860.0	22.70	22.0 ± 1.0	23.00	1.072
	26365/1882.5	22.68	22.0 ± 1.0	23.00	1.076
	26590/1905.0	22.64	22.0 ± 1.0	23.00	1.086
LTE B25 20MHz 100%RB#0 ANT 3	26140/1860.0	22.71	22.0 ± 1.0	23.00	1.069
	26365/1882.5	22.74	22.0 ± 1.0	23.00	1.062
	26590/1905.0	22.65	22.0 ± 1.0	23.00	1.084
LTE B26(Part 22) 15MHz 1RB#0 ANT 3	26865/831.5	23.42	23.0 ± 1.0	24.00	1.143
	26915/836.5	23.54	23.0 ± 1.0	24.00	1.112
	26965/841.5	23.35	23.0 ± 1.0	24.00	1.161
LTE B26(Part 22) 15MHz 50%RB#0 ANT 3	26865/831.5	22.81	22.5 ± 1.0	23.50	1.172
	26915/836.5	22.65	22.0 ± 1.0	23.00	1.084
	26965/841.5	22.31	22.0 ± 1.0	23.00	1.172
LTE B26(Part 90) 10MHz 1RB#0 ANT 3	26740/819.0	23.51	23.0 ± 1.0	24.00	1.119
LTE B26(Part 90) 10MHz 50%RB#0 ANT 3	26740/819.0	22.52	22.0 ± 1.0	23.00	1.117
LTE B38 20MHz 1RB#0 ANT 3	37850/2580.0	23.40	23.0 ± 1.0	24.00	1.148
	38000/2595.0	23.43	23.0 ± 1.0	24.00	1.140
	38150/2610.0	23.51	23.0 ± 1.0	24.00	1.119
LTE B38 20MHz 50%RB#0 ANT 3	37850/2580.0	22.13	21.5 ± 1.0	22.50	1.089
	38000/2595.0	22.17	21.5 ± 1.0	22.50	1.079
	38150/2610.0	22.21	21.5 ± 1.0	22.50	1.069
LTE B41 20MHz 1RB#0 ANT 3	40340/2565.0	23.31	23.0 ± 1.0	24.00	1.172
	40740/2605.0	23.41	23.0 ± 1.0	24.00	1.146
	41140/2645.0	23.38	23.0 ± 1.0	24.00	1.153
LTE B41 20MHz 50%RB#0 ANT 3	40340/2565.0	22.16	21.5 ± 1.0	22.50	1.081
	40740/2605.0	22.25	21.5 ± 1.0	22.50	1.059
	41140/2645.0	22.21	21.5 ± 1.0	22.50	1.069
LTE B66 20MHz 1RB#0 ANT 3	132072/1720.0	23.49	23.0 ± 1.0	24.00	1.125
	132322/1745.0	23.52	23.0 ± 1.0	24.00	1.117
	132572/1770.0	23.31	23.0 ± 1.0	24.00	1.172



LTE B66 20MHz 50%RB#0 ANT 3	132072/1720.0	22.36	22.0 ± 1.0	23.00	1.159
	132322/1745.0	22.56	22.0 ± 1.0	23.00	1.107
	132572/1770.0	22.32	22.0 ± 1.0	23.00	1.169
LTE B66 20MHz 100%RB#0 ANT 3	132072/1720.0	22.41	22.0 ± 1.0	23.00	1.146
	132322/1745.0	22.45	22.0 ± 1.0	23.00	1.135
	132572/1770.0	22.27	22.0 ± 1.0	23.00	1.183
WIFI 2.4G 802.11b ANT 2	1/2412.0	15.08	14.5 ± 1.0	15.50	1.102
	6/2437.0	15.74	15.0 ± 1.0	16.00	1.062
	11/2462.0	16.05	15.5 ± 1.0	16.50	1.109
WIFI U-NII 1 802.11a ANT 2	36/5180.0	7.93	7.5 ± 1.0	8.50	1.140
	44/5220.0	7.88	7.5 ± 1.0	8.50	1.153
	48/5240.0	8.63	8.0 ± 1.0	9.00	1.089
WIFI U-NII 2a 802.11a ANT 2	52/5260.0	8.31	8.0 ± 1.0	9.00	1.172
	60/5300.0	8.34	8.0 ± 1.0	9.00	1.164
	64/5320.0	8.42	8.0 ± 1.0	9.00	1.143
WIFI U-NII 2c 802.11a ANT 2	100/5500.0	7.80	7.5 ± 1.0	8.50	1.175
	120/5600.0	8.93	8.5 ± 1.0	9.50	1.140
	140/5700.0	10.13	9.5 ± 1.0	10.50	1.089
WIFI U-NII 3 802.11a ANT 2	149/5745.0	10.00	9.5 ± 1.0	10.50	1.122
	157/5785.0	9.29	9.0 ± 1.0	10.00	1.178
	165/5825.0	8.57	8.0 ± 1.0	9.00	1.104
BT ANT 2	0/2402.0	8.68	8.0 ± 1.0	9.00	1.076
	39/2441.0	10.04	9.5 ± 1.0	10.50	1.112
	78/2480.0	9.03	8.5 ± 1.0	9.50	1.114

Note: for LTE power tolerance, only QPSK modulation mode was provide here.



10. Test Results

Results overview of GSM850

ANT 3

Head	Channel /Frequency	Mode	SAR Value (W/kg)1-g	Power drift(%)	Scaled Factor	Scaled SAR (W/Kg)1-g	Limit (W/kg)	SAR Plot.
Right Cheek	190/836.6	Voice	0.223	-2.13	1.143	0.255	1.6	/
Right Tilted	190/836.6	Voice	0.096	0.40	1.143	0.110	1.6	/
Left Cheek	190/836.6	Voice	0.239	-2.31	1.143	0.273	1.6	/
Left Tilted	190/836.6	Voice	0.102	-0.92	1.143	0.117	1.6	/
Left Cheek	128/824.2	Voice	0.214	-3.75	1.175	0.251	1.6	/
Left Cheek	251/848.8	Voice	0.247	-2.71	1.135	0.280	1.6	1
Body-worn(10mm)	Channel /Frequency	Mode	SAR Value (W/kg)1-g	Power drift(%)	Scaled Factor	Scaled SAR (W/Kg)1-g	Limit (W/kg)	SAR Plot.
Front Upward	190/836.6	GPRS 2Tx	0.135	-0.58	1.086	0.147	1.6	/
Back Upward	190/836.6	GPRS 2Tx	0.314	-2.10	1.086	0.341	1.6	2
Back Upward	128/824.2	GPRS 2Tx	0.265	-0.51	1.143	0.303	1.6	/
Back Upward	251/848.8	GPRS 2Tx	0.305	1.04	1.094	0.334	1.6	/
Hotspot(10mm)	Channel /Frequency	Mode	SAR Value (W/kg)1-g	Power drift(%)	Scaled Factor	Scaled SAR (W/Kg)1-g	Limit (W/kg)	SAR Plot.
Front Upward	190/836.6	GPRS 2Tx	0.135	-0.58	1.086	0.147	1.6	/
Back Upward	190/836.6	GPRS 2Tx	0.314	-2.10	1.086	0.341	1.6	2
Left	190/836.6	GPRS 2Tx	0.093	2.33	1.086	0.101	1.6	/
Right	190/836.6	GPRS 2Tx	0.065	0.81	1.086	0.071	1.6	/
Bottom	190/836.6	GPRS 2Tx	0.078	-1.57	1.086	0.085	1.6	/
Back Upward	128/824.2	GPRS 2Tx	0.265	-0.51	1.143	0.303	1.6	/
Back Upward	251/848.8	GPRS 2Tx	0.305	1.04	1.094	0.334	1.6	/



Results overview of GSM1900

ANT 3

Head	Channel /Frequency	Mode	SAR Value (W/kg)1-g	Power drift(%)	Scaled Factor	Scaled SAR (W/Kg)1-g	Limit (W/kg)	SAR Plot.
Right Cheek	661/1880.0	Voice	0.192	0.78	1.064	0.204	1.6	/
Right Tilted	661/1880.0	Voice	0.089	-0.35	1.064	0.095	1.6	/
Left Cheek	661/1880.0	Voice	0.221	-1.70	1.064	0.235	1.6	/
Left Tilted	661/1880.0	Voice	0.097	-1.84	1.064	0.103	1.6	/
Left Cheek	512/1850.2	Voice	0.201	-3.36	1.117	0.225	1.6	/
Left Cheek	810/1909.8	Voice	0.239	0.42	1.067	0.255	1.6	3
Body-worn(10mm)	Channel /Frequency	Mode	SAR Value (W/kg)1-g	Power drift(%)	Scaled Factor	Scaled SAR (W/Kg)1-g	Limit (W/kg)	SAR Plot.
Front Upward	661/1880.0	GPRS 2Tx	0.111	0.54	1.130	0.125	1.6	/
Back Upward	661/1880.0	GPRS 2Tx	0.398	-2.10	1.130	0.450	1.6	4
Back Upward	512/1850.2	GPRS 2Tx	0.372	0.26	1.072	0.399	1.6	/
Back Upward	810/1909.8	GPRS 2Tx	0.340	-0.75	1.112	0.378	1.6	/
Hotspot(10mm)	Channel /Frequency	Mode	SAR Value (W/kg)1-g	Power drift(%)	Scaled Factor	Scaled SAR (W/Kg)1-g	Limit (W/kg)	SAR Plot.
Front Upward	661/1880.0	GPRS 2Tx	0.111	0.54	1.130	0.125	1.6	/
Back Upward	661/1880.0	GPRS 2Tx	0.398	-2.10	1.130	0.450	1.6	/
Left	661/1880.0	GPRS 2Tx	0.111	0.25	1.072	0.119	1.6	/
Right	661/1880.0	GPRS 2Tx	0.093	-3.39	1.130	0.105	1.6	/
Bottom	661/1880.0	GPRS 2Tx	0.463	-2.12	1.130	0.523	1.6	5
Bottom	512/1850.2	GPRS 2Tx	0.432	3.00	1.072	0.463	1.6	/
Bottom	810/1909.8	GPRS 2Tx	0.400	-3.59	1.112	0.445	1.6	/



Results overview of CDMA BC 0

ANT 3

Head	Channel /Frequency	Mode	SAR Value (W/kg)1-g	Power drift(%)	Scaled Factor	Scaled SAR (W/Kg)1-g	Limit (W/kg)	SAR Plot.
Right Cheek	384/836.52	RC3 + SO55	0.305	-0.72	1.089	0.332	1.6	/
Right Tilted	384/836.52	RC3 + SO55	0.116	-0.15	1.089	0.126	1.6	/
Left Cheek	384/836.52	RC3 + SO55	0.390	3.09	1.089	0.425	1.6	6
Left Tilted	384/836.52	RC3 + SO55	0.131	0.67	1.089	0.143	1.6	/
Left Cheek	1013/826.7	RC3 + SO55	0.362	-2.04	1.102	0.399	1.6	/
Left Cheek	777/848.31	RC3 + SO55	0.313	-3.30	1.164	0.364	1.6	/
Body-worn(10mm)	Channel /Frequency	Mode	SAR Value (W/kg)1-g	Power drift(%)	Scaled Factor	Scaled SAR (W/Kg)1-g	Limit (W/kg)	SAR Plot.
Front Upward	384/836.52	RC3 + SO32 (+F-SCH)	0.182	-0.87	1.117	0.203	1.6	/
Back Upward	384/836.52	RC3 + SO32 (+F-SCH)	0.391	-2.04	1.117	0.437	1.6	/
Back Upward	1013/826.7	RC3 + SO32 (+F-SCH)	0.367	-1.89	1.143	0.419	1.6	/
Back Upward	777/848.31	RC3 + SO32 (+F-SCH)	0.404	2.73	1.186	0.479	1.6	7
Hotspot(10mm)	Channel /Frequency	Mode	SAR Value (W/kg)1-g	Power drift(%)	Scaled Factor	Scaled SAR (W/Kg)1-g	Limit (W/kg)	SAR Plot.
Front Upward	384/836.52	RC3 + SO32 (+F-SCH)	0.182	-0.87	1.117	0.203	1.6	/
Back Upward	384/836.52	RC3 + SO32 (+F-SCH)	0.391	-2.04	1.117	0.437	1.6	/
Left	384/836.52	RC3 + SO32 (+F-SCH)	0.125	0.85	1.117	0.140	1.6	/
Right	384/836.52	RC3 + SO32 (+F-SCH)	0.087	-2.93	1.117	0.097	1.6	/
Bottom	384/836.52	RC3 + SO32 (+F-SCH)	0.112	-0.12	1.117	0.125	1.6	/
Back Upward	1013/826.7	RC3 + SO32 (+F-SCH)	0.367	-1.89	1.143	0.419	1.6	/
Back Upward	777/848.31	RC3 + SO32 (+F-SCH)	0.404	2.73	1.186	0.479	1.6	7



Results overview of WCDMA850

ANT 3

Head	Channel /Frequency	Mode	SAR Value (W/kg)1-g	Power drift(%)	Scaled Factor	Scaled SAR (W/Kg)1-g	Limit (W/kg)	SAR Plot.
Right Cheek	4183/836.6	RMC	0.322	0.74	1.104	0.355	1.6	/
Right Tilted	4183/836.6	RMC	0.129	-2.29	1.104	0.142	1.6	/
Left Cheek	4183/836.6	RMC	0.346	1.67	1.104	0.382	1.6	8
Left Tilted	4183/836.6	RMC	0.135	-1.81	1.104	0.149	1.6	/
Left Cheek	4132/826.4	RMC	0.306	-0.70	1.109	0.339	1.6	/
Left Cheek	4233/846.6	RMC	0.326	-3.92	1.107	0.361	1.6	/
Body-worn(10mm)	Channel /Frequency	Mode	SAR Value (W/kg)1-g	Power drift(%)	Scaled Factor	Scaled SAR (W/Kg)1-g	Limit (W/kg)	SAR Plot.
Front Upward	4183/836.6	RMC	0.294	0.44	1.104	0.325	1.6	/
Back Upward	4183/836.6	RMC	0.637	-0.38	1.104	0.703	1.6	9
Back Upward	4132/826.4	RMC	0.561	-3.09	1.109	0.622	1.6	/
Back Upward	4233/846.6	RMC	0.607	2.40	1.107	0.672	1.6	/
Hotspot(10mm)	Channel /Frequency	Mode	SAR Value (W/kg)1-g	Power drift(%)	Scaled Factor	Scaled SAR (W/Kg)1-g	Limit (W/kg)	SAR Plot.
Front Upward	4183/836.6	RMC	0.294	0.44	1.104	0.325	1.6	/
Back Upward	4183/836.6	RMC	0.637	-0.38	1.104	0.703	1.6	9
Left	4183/836.6	RMC	0.131	-1.47	1.104	0.145	1.6	/
Right	4183/836.6	RMC	0.100	-0.58	1.104	0.110	1.6	/
Bottom	4183/836.6	RMC	0.149	-3.95	1.104	0.164	1.6	/
Back Upward	4132/826.4	RMC	0.561	-3.09	1.109	0.622	1.6	/
Back Upward	4233/846.6	RMC	0.607	2.40	1.107	0.672	1.6	/



Results overview of WCDMA1700

ANT 3

Head	Channel /Frequency	Mode	SAR Value (W/kg)1-g	Power drift(%)	Scaled Factor	Scaled SAR (W/Kg)1-g	Limit (W/kg)	SAR Plot.
Right Cheek	1413/1732.6	RMC	0.394	-3.12	1.143	0.450	1.6	/
Right Tilted	1413/1732.6	RMC	0.156	0.16	1.143	0.178	1.6	/
Left Cheek	1413/1732.6	RMC	0.490	-1.89	1.143	0.560	1.6	/
Left Tilted	1413/1732.6	RMC	0.205	3.29	1.143	0.234	1.6	/
Left Cheek	1312/1712.4	RMC	0.525	-0.68	1.169	0.614	1.6	10
Left Cheek	1513/1752.6	RMC	0.436	-1.54	1.156	0.504	1.6	/
Body-worn(10mm)	Channel /Frequency	Mode	SAR Value (W/kg)1-g	Power drift(%)	Scaled Factor	Scaled SAR (W/Kg)1-g	Limit (W/kg)	SAR Plot.
Front Upward	1413/1732.6	RMC	0.632	-1.76	1.143	0.722	1.6	/
Back Upward	1413/1732.6	RMC	0.620	-0.98	1.143	0.709	1.6	/
Front Upward	1312/1712.4	RMC	0.648	-0.58	1.169	0.758	1.6	11
Front Upward	1513/1752.6	RMC	0.591	0.27	1.156	0.683	1.6	/
Hotspot(10mm)	Channel /Frequency	Mode	SAR Value (W/kg)1-g	Power drift(%)	Scaled Factor	Scaled SAR (W/Kg)1-g	Limit (W/kg)	SAR Plot.
Front Upward	1413/1732.6	RMC	0.632	-1.76	1.143	0.722	1.6	/
Back Upward	1413/1732.6	RMC	0.620	-0.98	1.143	0.709	1.6	/
Left	1413/1732.6	RMC	0.165	2.57	1.143	0.189	1.6	/
Right	1413/1732.6	RMC	0.113	-1.63	1.143	0.129	1.6	/
Bottom	1413/1732.6	RMC	0.490	-2.69	1.143	0.560	1.6	/
Front Upward	1312/1712.4	RMC	0.648	-0.58	1.169	0.758	1.6	11
Front Upward	1513/1752.6	RMC	0.591	0.27	1.156	0.683	1.6	/



Results overview of WCDMA1900

ANT 3

Head	Channel /Frequency	Mode	SAR Value (W/kg)1-g	Power drift(%)	Scaled Factor	Scaled SAR (W/Kg)1-g	Limit (W/kg)	SAR Plot.
Right Cheek	9400/1880.0	RMC	0.433	-0.57	1.125	0.487	1.6	/
Right Tilted	9400/1880.0	RMC	0.185	-0.99	1.125	0.208	1.6	/
Left Cheek	9400/1880.0	RMC	0.495	1.31	1.125	0.557	1.6	/
Left Tilted	9400/1880.0	RMC	0.229	-0.50	1.125	0.258	1.6	/
Left Cheek	9262/1852.4	RMC	0.520	-0.21	1.099	0.571	1.6	12
Left Cheek	9538/1907.6	RMC	0.438	2.10	1.122	0.491	1.6	/
Body-worn(10mm)	Channel /Frequency	Mode	SAR Value (W/kg)1-g	Power drift(%)	Scaled Factor	Scaled SAR (W/Kg)1-g	Limit (W/kg)	SAR Plot.
Front Upward	9400/1880.0	RMC	0.490	-3.11	1.125	0.551	1.6	/
Back Upward	9400/1880.0	RMC	0.929	-2.25	1.125	1.045	1.6	/
Back Upward	9262/1852.4	RMC	0.956	-0.91	1.099	1.051	1.6	13
Back Upward Repeat	9262/1852.4	RMC	0.950	0.22	1.099	1.044	1.6	/
Back Upward	9538/1907.6	RMC	0.867	1.22	1.122	0.973	1.6	/
Hotspot(10mm)	Channel /Frequency	Mode	SAR Value (W/kg)1-g	Power drift(%)	Scaled Factor	Scaled SAR (W/Kg)1-g	Limit (W/kg)	SAR Plot.
Front Upward	9400/1880.0	RMC	0.490	-3.11	1.125	0.551	1.6	/
Back Upward	9400/1880.0	RMC	0.929	-2.25	1.125	1.045	1.6	/
Back Upward	9262/1852.4	RMC	0.956	-0.91	1.099	1.051	1.6	13
Back Upward Repeat	9262/1852.4	RMC	0.950	0.22	1.099	1.044	1.6	/
Back Upward	9538/1907.6	RMC	0.867	1.22	1.122	0.973	1.6	/
Left	9400/1880.0	RMC	0.220	-1.47	1.125	0.248	1.6	/
Right	9400/1880.0	RMC	0.153	0.25	1.125	0.172	1.6	/
Bottom	9400/1880.0	RMC	0.902	1.26	1.125	1.015	1.6	/
Bottom Repeat	9400/1880.0	RMC	0.915	0.66	1.125	1.029	1.6	/
Bottom	9262/1852.4	RMC	0.887	1.02	1.125	0.998	1.6	/
Bottom	9538/1907.6	RMC	0.836	-0.43	1.125	0.941	1.6	/



Results overview of FDD LTE Band 2, QPSK, 20MHz Bandwidth

ANT 3

Head	Channel /Frequency	Mode	SAR Value (W/kg)1-g	Power drift(%)	Scaled Factor	Scaled SAR (W/Kg)1-g	Limit (W/kg)	SAR Plot.
1RB#0								
Right Cheek	18900/1880.0	QPSK	0.581	-1.53	1.099	0.639	1.6	/
Right Tilted	18900/1880.0	QPSK	0.233	-1.05	1.099	0.245	1.6	/
Left Cheek	18900/1880.0	QPSK	0.703	-0.33	1.099	0.773	1.6	/
Left Tilted	18900/1880.0	QPSK	0.310	2.48	1.099	0.341	1.6	/
Left Cheek	18700/1860.0	QPSK	0.718	-0.96	1.094	0.785	1.6	/
Left Cheek	19100/1900.0	QPSK	0.732	-0.25	1.076	0.788	1.6	14
50%RB#0								
Right Cheek	18900/1880.0	QPSK	0.485	0.41	1.074	0.521	1.6	/
Right Tilted	18900/1880.0	QPSK	0.174	-0.86	1.074	0.187	1.6	/
Left Cheek	18900/1880.0	QPSK	0.592	-0.64	1.074	0.636	1.6	/
Left Tilted	18900/1880.0	QPSK	0.256	-2.65	1.074	0.275	1.6	/
Body-worn(10mm)	Channel /Frequency	Mode	SAR Value (W/kg)1-g	Power drift(%)	Scaled Factor	Scaled SAR (W/Kg)1-g	Limit (W/kg)	SAR Plot.
1RB#0								
Front Upward	18900/1880.0	QPSK	0.652	-1.23	1.099	0.717	1.6	/
Back Upward	18900/1880.0	QPSK	1.029	0.71	1.099	1.131	1.6	/
Back Upward	18700/1860.0	QPSK	1.085	-3.97	1.094	1.187	1.6	/
Back Upward	19100/1900.0	QPSK	1.104	-1.23	1.076	1.188	1.6	15
Back Upward Repeat	19100/1900.0	QPSK	1.092	0.60	1.076	1.175	1.6	/
50%RB#0								
Front Upward	18900/1880.0	QPSK	0.520	3.65	1.074	0.558	1.6	/
Back Upward	18900/1880.0	QPSK	0.839	1.62	1.074	0.901	1.6	/
Back Upward Repeat	18900/1880.0	QPSK	0.845	-0.70	1.074	0.908	1.6	/
Back Upward	18700/1860.0	QPSK	0.822	-2.25	1.130	0.929	1.6	/
Back Upward	19100/1900.0	QPSK	0.759	0.92	1.114	0.846	1.6	/
1RB#0								
Front Upward	18900/1880.0	QPSK	0.505	-0.59	1.119	0.565	1.6	/
Back Upward	18900/1880.0	QPSK	0.779	2.08	1.119	0.872	1.6	/
Back Upward	18700/1860.0	QPSK	0.792	-0.58	1.143	0.905	1.6	/
Back Upward	19100/1900.0	QPSK	0.710	0.19	1.112	0.790	1.6	/
Hotspot(10mm)	Channel /Frequency	Mode	SAR Value (W/kg)1-g	Power drift(%)	Scaled Factor	Scaled SAR (W/Kg)1-g	Limit (W/kg)	SAR Plot.
1RB#0								
Front Upward	18900/1880.0	QPSK	0.652	-1.23	1.099	0.717	1.6	/
Back Upward	18900/1880.0	QPSK	1.029	0.71	1.099	1.131	1.6	/
Back Upward	18700/1860.0	QPSK	1.085	-3.97	1.094	1.187	1.6	/



Back Upward	19100/1900.0	QPSK	1.104	-1.23	1.076	1.188	1.6	16
Back Upward Repeat	19100/1900.0	QPSK	1.092	0.60	1.076	1.175	1.6	/
Left	18900/1880.0	QPSK	0.203	-1.19	1.099	0.223	1.6	/
Right	18900/1880.0	QPSK	0.139	0.25	1.099	0.153	1.6	/
Bottom	18900/1880.0	QPSK	0.885	-1.88	1.099	0.973	1.6	/
Bottom	18700/1860.0	QPSK	0.871	0.69	1.094	0.953	1.6	/
Bottom	19100/1900.0	QPSK	0.934	-2.84	1.076	1.005	1.6	/
Bottom Repeat	19100/1900.0	QPSK	0.919	-0.90	1.076	0.989	1.6	/
50%RB#0								
Front Upward	18900/1880.0	QPSK	0.520	3.65	1.074	0.558	1.6	/
Back Upward	18900/1880.0	QPSK	0.839	1.62	1.074	0.901	1.6	/
Back Upward Repeat	18900/1880.0	QPSK	0.845	-0.70	1.074	0.908	1.6	/
Left	18900/1880.0	QPSK	0.141	-3.70	1.074	0.151	1.6	/
Right	18900/1880.0	QPSK	0.093	-0.31	1.074	0.100	1.6	/
Bottom	18900/1880.0	QPSK	0.726	-1.24	1.074	0.780	1.6	/
Back Upward	18700/1860.0	QPSK	0.822	-2.25	1.130	0.929	1.6	/
Back Upward	19100/1900.0	QPSK	0.759	0.92	1.114	0.846	1.6	/
100%RB#0								
Front Upward	18900/1880.0	QPSK	0.505	-0.59	1.119	0.565	1.6	/
Back Upward	18900/1880.0	QPSK	0.779	2.08	1.119	0.872	1.6	/
Left	18900/1880.0	QPSK	0.125	-1.01	1.119	0.140	1.6	/
Right	18900/1880.0	QPSK	0.086	0.98	1.119	0.096	1.6	/
Bottom	18900/1880.0	QPSK	0.687	-2.73	1.119	0.769	1.6	/
Back Upward	18700/1860.0	QPSK	0.792	-0.58	1.143	0.905	1.6	/
Back Upward	19100/1900.0	QPSK	0.710	0.19	1.112	0.790	1.6	/



Results overview of FDD LTE Band 4, QPSK, 20MHz Bandwidth

ANT 3

Head	Channel /Frequency	Mode	SAR Value (W/kg)1-g	Power drift(%)	Scaled Factor	Scaled SAR (W/Kg)1-g	Limit (W/kg)	SAR Plot.
1RB#0								
Right Cheek	20175/1732.5	QPSK	0.498	-1.14	1.112	0.554	1.6	/
Right Tilted	20175/1732.5	QPSK	0.212	-2.86	1.112	0.236	1.6	/
Left Cheek	20175/1732.5	QPSK	0.635	0.65	1.112	0.706	1.6	/
Left Tilted	20175/1732.5	QPSK	0.294	-3.47	1.112	0.327	1.6	/
Left Cheek	20050/1720.0	QPSK	0.682	-1.57	1.084	0.739	1.6	16
Left Cheek	20300/1745.0	QPSK	0.601	0.54	1.132	0.680	1.6	/
50%RB#0								
Right Cheek	20175/1732.5	QPSK	0.402	-1.36	1.130	0.454	1.6	/
Right Tilted	20175/1732.5	QPSK	0.179	-3.05	1.130	0.202	1.6	/
Left Cheek	20175/1732.5	QPSK	0.540	0.82	1.130	0.610	1.6	/
Left Tilted	20175/1732.5	QPSK	0.231	-1.77	1.130	0.261	1.6	/
Body-worn(10mm)	Channel /Frequency	Mode	SAR Value (W/kg)1-g	Power drift(%)	Scaled Factor	Scaled SAR (W/Kg)1-g	Limit (W/kg)	SAR Plot.
1RB#0								
Front Upward	20175/1732.5	QPSK	0.659	0.82	1.112	0.733	1.6	/
Back Upward	20175/1732.5	QPSK	0.711	-3.01	1.112	0.791	1.6	/
Back Upward	20050/1720.0	QPSK	0.760	-1.34	1.084	0.824	1.6	17
Back Upward	20300/1745.0	QPSK	0.672	-2.51	1.132	0.761	1.6	/
50%RB#0								
Front Upward	20175/1732.5	QPSK	0.520	-0.60	1.130	0.588	1.6	/
Back Upward	20175/1732.5	QPSK	0.584	1.22	1.130	0.660	1.6	/
100%RB#0								
Front Upward	20175/1732.5	QPSK	0.509	-0.59	1.143	0.582	1.6	/
Back Upward	20175/1732.5	QPSK	0.562	-2.12	1.143	0.642	1.6	/
Hotspot(10mm)	Channel /Frequency	Mode	SAR Value (W/kg)1-g	Power drift(%)	Scaled Factor	Scaled SAR (W/Kg)1-g	Limit (W/kg)	SAR Plot.
1RB#0								
Front Upward	20175/1732.5	QPSK	0.659	0.82	1.112	0.733	1.6	/
Back Upward	20175/1732.5	QPSK	0.711	-3.01	1.112	0.791	1.6	/
Left	20175/1732.5	QPSK	0.205	-0.98	1.112	0.228	1.6	/
Right	20175/1732.5	QPSK	0.144	-2.38	1.112	0.160	1.6	/
Bottom	20175/1732.5	QPSK	0.510	-1.56	1.112	0.567	1.6	/
Back Upward	20050/1720.0	QPSK	0.760	-1.34	1.084	0.824	1.6	17
Back Upward	20300/1745.0	QPSK	0.672	-2.51	1.132	0.761	1.6	/
50%RB#0								
Front Upward	20175/1732.5	QPSK	0.520	-0.60	1.130	0.588	1.6	/
Back Upward	20175/1732.5	QPSK	0.584	1.22	1.130	0.660	1.6	/
Left	20175/1732.5	QPSK	0.141	0.50	1.130	0.159	1.6	/



Right	20175/1732.5	QPSK	0.102	-1.83	1.130	0.115	1.6	/
Bottom	20175/1732.5	QPSK	0.421	0.41	1.130	0.476	1.6	/
100%RB#0								
Front Upward	20175/1732.5	QPSK	0.509	-0.59	1.143	0.582	1.6	/
Back Upward	20175/1732.5	QPSK	0.562	-2.12	1.143	0.642	1.6	/
Left	20175/1732.5	QPSK	0.110	3.31	1.143	0.126	1.6	/
Right	20175/1732.5	QPSK	0.093	-0.50	1.143	0.106	1.6	/
Bottom	20175/1732.5	QPSK	0.406	-2.20	1.143	0.464	1.6	/



Results overview of FDD LTE Band 5, QPSK, 10MHz Bandwidth

ANT 3

Head	Channel /Frequency	Mode	SAR Value (W/kg)1-g	Power drift(%)	Scaled Factor	Scaled SAR (W/Kg)1-g	Limit (W/kg)	SAR Plot.
1RB#0								
Right Cheek	20525/836.5	QPSK	0.277	-0.79	1.114	0.309	1.6	/
Right Tilted	20525/836.5	QPSK	0.122	1.80	1.114	0.136	1.6	/
Left Cheek	20525/836.5	QPSK	0.321	-0.27	1.114	0.358	1.6	/
Left Tilted	20525/836.5	QPSK	0.147	-2.30	1.114	0.164	1.6	/
Left Cheek	20450/829.0	QPSK	0.337	-1.22	1.127	0.380	1.6	18
Left Cheek	20600/844.0	QPSK	0.292	-0.59	1.146	0.335	1.6	/
50%RB#0								
Right Cheek	20525/836.5	QPSK	0.202	-0.56	1.146	0.231	1.6	/
Right Tilted	20525/836.5	QPSK	0.090	-1.45	1.146	0.103	1.6	/
Left Cheek	20525/836.5	QPSK	0.236	-2.01	1.146	0.270	1.6	/
Left Tilted	20525/836.5	QPSK	0.111	0.80	1.146	0.127	1.6	/
Body-worn(10mm)	Channel /Frequency	Mode	SAR Value (W/kg)1-g	Power drift(%)	Scaled Factor	Scaled SAR (W/Kg)1-g	Limit (W/kg)	SAR Plot.
1RB#0								
Front Upward	20525/836.5	QPSK	0.453	1.14	1.114	0.505	1.6	/
Back Upward	20525/836.5	QPSK	0.512	-2.69	1.114	0.570	1.6	/
Back Upward	20450/829.0	QPSK	0.569	2.07	1.127	0.641	1.6	19
Back Upward	20600/844.0	QPSK	0.482	0.85	1.146	0.552	1.6	/
50%RB#0								
Front Upward	20525/836.5	QPSK	0.360	0.47	1.146	0.413	1.6	/
Back Upward	20525/836.5	QPSK	0.402	-1.60	1.146	0.461	1.6	/
Hotspot(10mm)	Channel /Frequency	Mode	SAR Value (W/kg)1-g	Power drift(%)	Scaled Factor	Scaled SAR (W/Kg)1-g	Limit (W/kg)	SAR Plot.
1RB#0								
Front Upward	20525/836.5	QPSK	0.453	1.14	1.114	0.505	1.6	/
Back Upward	20525/836.5	QPSK	0.512	-2.69	1.114	0.570	1.6	/
Left	20525/836.5	QPSK	0.113	3.10	1.114	0.126	1.6	/
Right	20525/836.5	QPSK	0.090	-1.65	1.114	0.100	1.6	/
Bottom	20525/836.5	QPSK	0.152	-1.74	1.114	0.169	1.6	/
Back Upward	20450/829.0	QPSK	0.569	2.07	1.127	0.641	1.6	19
Back Upward	20600/844.0	QPSK	0.482	0.85	1.146	0.552	1.6	/
50%RB#0								
Front Upward	20525/836.5	QPSK	0.360	0.47	1.146	0.413	1.6	/
Back Upward	20525/836.5	QPSK	0.402	-1.60	1.146	0.461	1.6	/
Left	20525/836.5	QPSK	0.097	-0.16	1.146	0.111	1.6	/
Right	20525/836.5	QPSK	0.081	-3.86	1.146	0.093	1.6	/
Bottom	20525/836.5	QPSK	0.121	-1.77	1.146	0.139	1.6	/



Results overview of FDD LTE Band 7, QPSK, 20MHz Bandwidth

ANT 3

Head	Channel /Frequency	Mode	SAR Value (W/kg)1-g	Power drift(%)	Scaled Factor	Scaled SAR (W/Kg)1-g	Limit (W/kg)	SAR Plot.
1RB#0								
Right Cheek	21100/2535.0	QPSK	0.459	-2.85	1.143	0.525	1.6	/
Right Tilted	21100/2535.0	QPSK	0.205	0.34	1.143	0.234	1.6	/
Left Cheek	21100/2535.0	QPSK	0.601	-0.60	1.143	0.687	1.6	/
Left Tilted	21100/2535.0	QPSK	0.272	-1.03	1.143	0.311	1.6	/
Left Cheek	20850/2510.0	QPSK	0.661	-2.06	1.109	0.733	1.6	20
Left Cheek	21350/2560.0	QPSK	0.634	-3.56	1.119	0.709	1.6	/
50%RB#0								
Right Cheek	21100/2535.0	QPSK	0.360	2.91	1.180	0.425	1.6	/
Right Tilted	21100/2535.0	QPSK	0.167	-3.64	1.180	0.197	1.6	/
Left Cheek	21100/2535.0	QPSK	0.505	-3.32	1.180	0.596	1.6	/
Left Tilted	21100/2535.0	QPSK	0.239	0.27	1.180	0.282	1.6	/
Body-worn(10mm)	Channel /Frequency	Mode	SAR Value (W/kg)1-g	Power drift(%)	Scaled Factor	Scaled SAR (W/Kg)1-g	Limit (W/kg)	SAR Plot.
1RB#0								
Front Upward	21100/2535.0	QPSK	0.474	-0.89	1.143	0.542	1.6	/
Back Upward	21100/2535.0	QPSK	0.711	-3.19	1.143	0.813	1.6	/
Back Upward	20850/2510.0	QPSK	0.750	-1.40	1.109	0.832	1.6	21
Back Upward	21350/2560.0	QPSK	0.684	0.47	1.119	0.765	1.6	/
50%RB#0								
Front Upward	21100/2535.0	QPSK	0.358	1.41	1.180	0.422	1.6	/
Back Upward	21100/2535.0	QPSK	0.576	-2.80	1.180	0.680	1.6	/
100%RB#0								
Front Upward	21100/2535.0	QPSK	0.346	3.38	1.072	0.371	1.6	/
Back Upward	21100/2535.0	QPSK	0.592	0.92	1.072	0.635	1.6	/
Hotspot(10mm)	Channel /Frequency	Mode	SAR Value (W/kg)1-g	Power drift(%)	Scaled Factor	Scaled SAR (W/Kg)1-g	Limit (W/kg)	SAR Plot.
1RB#0								
Front Upward	21100/2535.0	QPSK	0.474	-0.89	1.143	0.542	1.6	/
Back Upward	21100/2535.0	QPSK	0.711	-3.19	1.143	0.813	1.6	/
Left	21100/2535.0	QPSK	0.138	-0.78	1.143	0.158	1.6	/
Right	21100/2535.0	QPSK	0.089	0.34	1.143	0.102	1.6	/
Bottom	21100/2535.0	QPSK	0.522	1.03	1.143	0.597	1.6	/
Back Upward	20850/2510.0	QPSK	0.750	-1.40	1.109	0.832	1.6	21
Back Upward	21350/2560.0	QPSK	0.684	0.47	1.119	0.765	1.6	/
50%RB#0								
Front Upward	21100/2535.0	QPSK	0.358	1.41	1.180	0.422	1.6	/
Back Upward	21100/2535.0	QPSK	0.576	-2.80	1.180	0.680	1.6	/
Left	21100/2535.0	QPSK	0.084	0.65	1.180	0.099	1.6	/



Right	21100/2535.0	QPSK	0.062	1.79	1.180	0.073	1.6	/
Bottom	21100/2535.0	QPSK	0.431	-0.43	1.180	0.509	1.6	/
100%RB#0								
Front Upward	21100/2535.0	QPSK	0.346	3.38	1.072	0.371	1.6	/
Back Upward	21100/2535.0	QPSK	0.592	0.92	1.072	0.635	1.6	/
Left	21100/2535.0	QPSK	0.091	-3.86	1.072	0.098	1.6	/
Right	21100/2535.0	QPSK	0.058	-2.62	1.072	0.062	1.6	/
Bottom	21100/2535.0	QPSK	0.451	-1.74	1.072	0.483	1.6	/



Results overview of FDD LTE Band 12, QPSK, 10MHz Bandwidth

ANT 3

Head	Channel /Frequency	Mode	SAR Value (W/kg)1-g	Power drift(%)	Scaled Factor	Scaled SAR (W/Kg)1-g	Limit (W/kg)	SAR Plot.
1RB#0								
Right Cheek	23095/707.5	QPSK	0.203	-1.45	1.076	0.218	1.6	/
Right Tilted	23095/707.5	QPSK	0.093	-2.61	1.076	0.100	1.6	/
Left Cheek	23095/707.5	QPSK	0.241	0.77	1.076	0.259	1.6	22
Left Tilted	23095/707.5	QPSK	0.111	-0.89	1.076	0.119	1.6	/
Left Cheek	23060/704.0	QPSK	0.229	-1.36	1.175	0.269	1.6	/
Left Cheek	23130/711.0	QPSK	0.202	2.85	1.089	0.220	1.6	/
50%RB#0								
Right Cheek	23095/707.5	QPSK	0.161	-1.03	1.164	0.187	1.6	/
Right Tilted	23095/707.5	QPSK	0.074	-2.97	1.164	0.086	1.6	/
Left Cheek	23095/707.5	QPSK	0.195	-0.48	1.164	0.227	1.6	/
Left Tilted	23095/707.5	QPSK	0.089	0.88	1.164	0.104	1.6	/
Body-worn(10mm)	Channel /Frequency	Mode	SAR Value (W/kg)1-g	Power drift(%)	Scaled Factor	Scaled SAR (W/Kg)1-g	Limit (W/kg)	SAR Plot.
1RB#0								
Front Upward	23095/707.5	QPSK	0.516	-3.18	1.076	0.555	1.6	/
Back Upward	23095/707.5	QPSK	0.603	-0.16	1.076	0.649	1.6	23
Back Upward	23060/704.0	QPSK	0.576	-2.20	1.175	0.677	1.6	/
Back Upward	23130/711.0	QPSK	0.531	0.55	1.089	0.578	1.6	/
50%RB#0								
Front Upward	23095/707.5	QPSK	0.400	-3.06	1.164	0.466	1.6	/
Back Upward	23095/707.5	QPSK	0.485	2.29	1.164	0.565	1.6	/
Hotspot(10mm)	Channel /Frequency	Mode	SAR Value (W/kg)1-g	Power drift(%)	Scaled Factor	Scaled SAR (W/Kg)1-g	Limit (W/kg)	SAR Plot.
1RB#0								
Front Upward	23095/707.5	QPSK	0.516	-3.18	1.076	0.555	1.6	/
Back Upward	23095/707.5	QPSK	0.603	-0.16	1.076	0.649	1.6	23
Left	23095/707.5	QPSK	0.104	-2.55	1.076	0.112	1.6	/
Right	23095/707.5	QPSK	0.081	1.08	1.076	0.087	1.6	/
Bottom	23095/707.5	QPSK	0.223	0.60	1.076	0.240	1.6	/
Back Upward	23060/704.0	QPSK	0.576	-2.20	1.175	0.677	1.6	/
Back Upward	23130/711.0	QPSK	0.531	0.55	1.089	0.578	1.6	/
50%RB#0								
Front Upward	23095/707.5	QPSK	0.400	-3.06	1.164	0.466	1.6	/
Back Upward	23095/707.5	QPSK	0.485	2.29	1.164	0.565	1.6	/
Left	23095/707.5	QPSK	0.087	1.81	1.164	0.101	1.6	/
Right	23095/707.5	QPSK	0.072	-3.27	1.164	0.084	1.6	/
Bottom	23095/707.5	QPSK	0.182	-0.65	1.164	0.212	1.6	/



Results overview of FDD LTE Band 13, QPSK, 10MHz Bandwidth

ANT 3

Head	Channel /Frequency	Mode	SAR Value (W/kg)1-g	Power drift(%)	Scaled Factor	Scaled SAR (W/Kg)1-g	Limit (W/kg)	SAR Plot.
1RB#0								
Right Cheek	23230/782.0	QPSK	0.145	-0.69	1.125	0.163	1.6	/
Right Tilted	23230/782.0	QPSK	0.063	-1.35	1.125	0.071	1.6	/
Left Cheek	23230/782.0	QPSK	0.166	-2.78	1.125	0.187	1.6	24
Left Tilted	23230/782.0	QPSK	0.072	-0.42	1.125	0.081	1.6	/
50%RB#0								
Right Cheek	23230/782.0	QPSK	0.106	-1.06	1.127	0.119	1.6	/
Right Tilted	23230/782.0	QPSK	0.050	-2.31	1.127	0.056	1.6	/
Left Cheek	23230/782.0	QPSK	0.113	-0.41	1.127	0.127	1.6	/
Left Tilted	23230/782.0	QPSK	0.054	0.58	1.127	0.061	1.6	/
Body-worn(10mm)	Channel /Frequency	Mode	SAR Value (W/kg)1-g	Power drift(%)	Scaled Factor	Scaled SAR (W/Kg)1-g	Limit (W/kg)	SAR Plot.
1RB#0								
Front Upward	23230/782.0	QPSK	0.472	-0.35	1.125	0.531	1.6	/
Back Upward	23230/782.0	QPSK	0.553	1.11	1.125	0.622	1.6	25
50%RB#0								
Front Upward	23230/782.0	QPSK	0.385	-3.06	1.127	0.434	1.6	/
Back Upward	23230/782.0	QPSK	0.461	-2.29	1.127	0.520	1.6	/
Hotspot(10mm)	Channel /Frequency	Mode	SAR Value (W/kg)1-g	Power drift(%)	Scaled Factor	Scaled SAR (W/Kg)1-g	Limit (W/kg)	SAR Plot.
1RB#0								
Front Upward	23230/782.0	QPSK	0.472	-0.35	1.125	0.531	1.6	/
Back Upward	23230/782.0	QPSK	0.553	1.11	1.125	0.622	1.6	25
Left	23230/782.0	QPSK	0.108	-0.65	1.125	0.122	1.6	/
Right	23230/782.0	QPSK	0.074	-2.27	1.125	0.083	1.6	/
Bottom	23230/782.0	QPSK	0.162	0.36	1.125	0.182	1.6	/
50%RB#0								
Front Upward	23230/782.0	QPSK	0.385	-3.06	1.127	0.434	1.6	/
Back Upward	23230/782.0	QPSK	0.461	-2.29	1.127	0.520	1.6	/
Left	23230/782.0	QPSK	0.083	-0.55	1.127	0.094	1.6	/
Right	23230/782.0	QPSK	0.052	0.38	1.127	0.059	1.6	/
Bottom	23230/782.0	QPSK	0.101	-1.26	1.127	0.114	1.6	/



Results overview of FDD LTE Band 17, QPSK, 10MHz Bandwidth

ANT 3

Head	Channel /Frequency	Mode	SAR Value (W/kg)1-g	Power drift(%)	Scaled Factor	Scaled SAR (W/Kg)1-g	Limit (W/kg)	SAR Plot.
1RB#0								
Right Cheek	23790/710.0	QPSK	0.169	1.89	1.114	0.188	1.6	/
Right Tilted	23790/710.0	QPSK	0.075	-0.30	1.114	0.084	1.6	/
Left Cheek	23790/710.0	QPSK	0.201	-2.19	1.114	0.224	1.6	26
Left Tilted	23790/710.0	QPSK	0.091	0.24	1.114	0.101	1.6	/
Left Cheek	23780/709.0	QPSK	0.189	-0.65	1.146	0.217	1.6	/
Left Cheek	23800/711.0	QPSK	0.197	-2.82	1.130	0.223	1.6	/
50%RB#0								
Right Cheek	23790/710.0	QPSK	0.140	-0.87	1.135	0.159	1.6	/
Right Tilted	23790/710.0	QPSK	0.067	-1.75	1.135	0.076	1.6	/
Left Cheek	23790/710.0	QPSK	0.171	-0.20	1.135	0.194	1.6	/
Left Tilted	23790/710.0	QPSK	0.080	-2.36	1.135	0.091	1.6	/
Body-worn(10mm)	Channel /Frequency	Mode	SAR Value (W/kg)1-g	Power drift(%)	Scaled Factor	Scaled SAR (W/Kg)1-g	Limit (W/kg)	SAR Plot.
1RB#0								
Front Upward	23790/710.0	QPSK	0.495	1.79	1.114	0.551	1.6	/
Back Upward	23790/710.0	QPSK	0.612	-3.36	1.114	0.682	1.6	27
Back Upward	23780/709.0	QPSK	0.569	-0.49	1.146	0.652	1.6	/
Back Upward	23800/711.0	QPSK	0.581	1.02	1.130	0.657	1.6	/
50%RB#0								
Front Upward	23790/710.0	QPSK	0.408	-1.44	1.135	0.463	1.6	/
Back Upward	23790/710.0	QPSK	0.519	-3.37	1.135	0.589	1.6	/
Hotspot(10mm)	Channel /Frequency	Mode	SAR Value (W/kg)1-g	Power drift(%)	Scaled Factor	Scaled SAR (W/Kg)1-g	Limit (W/kg)	SAR Plot.
1RB#0								
Front Upward	23790/710.0	QPSK	0.495	1.79	1.114	0.551	1.6	/
Back Upward	23790/710.0	QPSK	0.612	-3.36	1.114	0.682	1.6	28
Left	23790/710.0	QPSK	0.132	-2.91	1.114	0.147	1.6	/
Right	23790/710.0	QPSK	0.095	-0.67	1.114	0.106	1.6	/
Bottom	23790/710.0	QPSK	0.195	2.64	1.114	0.217	1.6	/
Back Upward	23780/709.0	QPSK	0.569	-0.49	1.146	0.652	1.6	/
Back Upward	23800/711.0	QPSK	0.581	1.02	1.130	0.657	1.6	/
50%RB#0								
Front Upward	23790/710.0	QPSK	0.408	-1.44	1.135	0.463	1.6	/
Back Upward	23790/710.0	QPSK	0.519	-3.37	1.135	0.589	1.6	/
Left	23790/710.0	QPSK	0.108	0.29	1.135	0.123	1.6	/
Right	23790/710.0	QPSK	0.082	-1.52	1.135	0.093	1.6	/
Bottom	23790/710.0	QPSK	0.163	0.62	1.135	0.185	1.6	/



Results overview of FDD LTE Band 25, QPSK, 20MHz Bandwidth

ANT 3

Head	Channel /Frequency	Mode	SAR Value (W/kg)1-g	Power drift(%)	Scaled Factor	Scaled SAR (W/Kg)1-g	Limit (W/kg)	SAR Plot.
1RB#0								
Right Cheek	26365/1882.5	QPSK	0.451	0.41	1.151	0.519	1.6	/
Right Tilted	26365/1882.5	QPSK	0.220	-1.92	1.151	0.253	1.6	/
Left Cheek	26365/1882.5	QPSK	0.620	-2.80	1.151	0.714	1.6	/
Left Tilted	26365/1882.5	QPSK	0.295	-1.06	1.151	0.340	1.6	/
Left Cheek	26140/1860.0	QPSK	0.657	0.83	1.164	0.765	1.6	28
Left Cheek	26590/1905.0	QPSK	0.579	-0.94	1.183	0.685	1.6	/
50%RB#0								
Right Cheek	26365/1882.5	QPSK	0.384	-1.86	1.076	0.413	1.6	/
Right Tilted	26365/1882.5	QPSK	0.186	0.64	1.076	0.200	1.6	/
Left Cheek	26365/1882.5	QPSK	0.493	0.29	1.076	0.530	1.6	/
Left Tilted	26365/1882.5	QPSK	0.213	-0.32	1.076	0.229	1.6	/
Body-worn(10mm)	Channel /Frequency	Mode	SAR Value (W/kg)1-g	Power drift(%)	Scaled Factor	Scaled SAR (W/Kg)1-g	Limit (W/kg)	SAR Plot.
1RB#0								
Front Upward	26365/1882.5	QPSK	0.632	2.74	1.151	0.727	1.6	/
Back Upward	26365/1882.5	QPSK	0.983	-3.67	1.151	1.131	1.6	/
Back Upward	26140/1860.0	QPSK	1.084	1.65	1.164	1.262	1.6	/
Back Upward Repeat	26140/1860.0	QPSK	1.107	-1.22	1.164	1.289	1.6	29
Back Upward	26590/1905.0	QPSK	1.021	2.46	1.183	1.208	1.6	/
50%RB#0								
Front Upward	26365/1882.5	QPSK	0.510	-0.68	1.076	0.549	1.6	/
Back Upward	26365/1882.5	QPSK	0.830	2.19	1.076	0.893	1.6	/
Back Upward Repeat	26365/1882.5	QPSK	0.821	-0.82	1.076	0.883	1.6	/
Back Upward	26140/1860.0	QPSK	0.789	-2.43	1.072	0.846	1.6	/
Back Upward	26590/1905.0	QPSK	0.816	-0.85	1.086	0.886	1.6	/
100%RB#0								
Front Upward	26365/1882.5	QPSK	0.489	-3.43	1.062	0.519	1.6	/
Back Upward	26365/1882.5	QPSK	0.774	0.29	1.062	0.822	1.6	/
Back Upward	26140/1860.0	QPSK	0.791	1.75	1.069	0.846	1.6	/
Back Upward	26590/1905.0	QPSK	0.730	-0.62	1.084	0.791	1.6	/
Hotspot(10mm)	Channel /Frequency	Mode	SAR Value (W/kg)1-g	Power drift(%)	Scaled Factor	Scaled SAR (W/Kg)1-g	Limit (W/kg)	SAR Plot.
1RB#0								
Front Upward	26365/1882.5	QPSK	0.632	2.74	1.151	0.727	1.6	/
Back Upward	26365/1882.5	QPSK	0.983	-3.67	1.151	1.131	1.6	/
Back Upward	26140/1860.0	QPSK	1.084	1.65	1.164	1.262	1.6	/



Back Upward Repeat	26140/1860.0	QPSK	1.107	-1.22	1.164	1.289	1.6	29
Back Upward	26590/1905.0	QPSK	1.021	2.46	1.183	1.208	1.6	/
Left	26365/1882.5	QPSK	0.265	2.02	1.151	0.305	1.6	/
Right	26365/1882.5	QPSK	0.189	-1.68	1.151	0.218	1.6	/
Bottom	26365/1882.5	QPSK	0.792	-0.53	1.151	0.912	1.6	/
Bottom	26140/1860.0	QPSK	0.875	-2.76	1.164	1.019	1.6	/
Bottom Repeat	26140/1860.0	QPSK	0.859	0.30	1.164	1.000	1.6	/
Bottom	26590/1905.0	QPSK	0.830	-0.85	1.183	0.982	1.6	/
50%RB#0								
Front Upward	26365/1882.5	QPSK	0.510	-0.68	1.076	0.549	1.6	/
Back Upward	26365/1882.5	QPSK	0.830	2.19	1.076	0.893	1.6	/
Back Upward Repeat	26365/1882.5	QPSK	0.821	-0.82	1.076	0.883	1.6	/
Left	26365/1882.5	QPSK	0.201	-0.68	1.076	0.216	1.6	/
Right	26365/1882.5	QPSK	0.153	2.19	1.076	0.165	1.6	/
Bottom	26365/1882.5	QPSK	0.642	-1.44	1.076	0.691	1.6	/
Back Upward	26140/1860.0	QPSK	0.789	-2.43	1.072	0.846	1.6	/
Back Upward	26590/1905.0	QPSK	0.816	-0.85	1.086	0.886	1.6	/
100%RB#0								
Front Upward	26365/1882.5	QPSK	0.489	-3.43	1.062	0.519	1.6	/
Back Upward	26365/1882.5	QPSK	0.774	0.29	1.062	0.822	1.6	/
Left	26365/1882.5	QPSK	0.171	1.20	1.062	0.182	1.6	/
Right	26365/1882.5	QPSK	0.122	-2.19	1.062	0.130	1.6	/
Bottom	26365/1882.5	QPSK	0.603	-3.00	1.062	0.640	1.6	/
Back Upward	26140/1860.0	QPSK	0.791	1.75	1.069	0.846	1.6	/
Back Upward	26590/1905.0	QPSK	0.730	-0.62	1.084	0.791	1.6	/
Limb(0mm)	Channel /Frequency	Mode	SAR Value (W/kg)10-g	Power drift(%)	Scaled Factor	Scaled SAR (W/Kg)10-g	Limit (W/kg)	SAR Plot.
1RB#0								
Back Upward	26365/1882.5	QPSK	2.515	0.27	1.151	2.895	4.0	/
Back Upward	26365/1882.5	QPSK	2.882	-0.59	1.164	3.355	4.0	30
Back Upward Repeat	26140/1860.0	QPSK	2.849	2.00	1.164	3.316	4.0	/
Back Upward	26590/1905.0	QPSK	2.739	-0.14	1.183	3.240	4.0	/



Results overview of FDD LTE Band 26(Part 22), QPSK, 15MHz Bandwidth

ANT 3

Head	Channel /Frequency	Mode	SAR Value (W/kg)1-g	Power drift(%)	Scaled Factor	Scaled SAR (W/Kg)1-g	Limit (W/kg)	SAR Plot.
1RB#0								
Right Cheek	26915/836.5	QPSK	0.285	-2.30	1.112	0.317	1.6	/
Right Tilted	26915/836.5	QPSK	0.121	0.48	1.112	0.135	1.6	/
Left Cheek	26915/836.5	QPSK	0.323	-3.71	1.112	0.359	1.6	/
Left Tilted	26915/836.5	QPSK	0.143	-0.66	1.112	0.159	1.6	/
Left Cheek	26865/831.5	QPSK	0.336	-2.25	1.143	0.384	1.6	31
Left Cheek	26965/841.5	QPSK	0.294	-1.30	1.161	0.341	1.6	/
50%RB#0								
Right Cheek	26915/836.5	QPSK	0.219	0.42	1.084	0.237	1.6	/
Right Tilted	26915/836.5	QPSK	0.097	-1.03	1.084	0.105	1.6	/
Left Cheek	26915/836.5	QPSK	0.265	-1.29	1.084	0.287	1.6	/
Left Tilted	26915/836.5	QPSK	0.110	2.13	1.084	0.119	1.6	/
Body-worn(10mm)	Channel /Frequency	Mode	SAR Value (W/kg)1-g	Power drift(%)	Scaled Factor	Scaled SAR (W/Kg)1-g	Limit (W/kg)	SAR Plot.
1RB#0								
Front Upward	26915/836.5	QPSK	0.489	-2.39	1.112	0.544	1.6	/
Back Upward	26915/836.5	QPSK	0.571	0.55	1.112	0.635	1.6	/
Back Upward	26865/831.5	QPSK	0.592	-3.36	1.143	0.677	1.6	32
Back Upward	26965/841.5	QPSK	0.521	-2.60	1.161	0.605	1.6	/
50%RB#0								
Front Upward	26915/836.5	QPSK	0.364	-2.14	1.084	0.395	1.6	/
Back Upward	26915/836.5	QPSK	0.448	-0.17	1.084	0.486	1.6	/
Hotspot(10mm)	Channel /Frequency	Mode	SAR Value (W/kg)1-g	Power drift(%)	Scaled Factor	Scaled SAR (W/Kg)1-g	Limit (W/kg)	SAR Plot.
1RB#0								
Front Upward	26915/836.5	QPSK	0.489	-2.39	1.112	0.544	1.6	/
Back Upward	26915/836.5	QPSK	0.571	0.55	1.112	0.635	1.6	/
Left	26915/836.5	QPSK	0.103	-1.69	1.112	0.115	1.6	/
Right	26915/836.5	QPSK	0.087	0.24	1.112	0.097	1.6	/
Bottom	26915/836.5	QPSK	0.162	-0.69	1.112	0.180	1.6	/
Back Upward	26865/831.5	QPSK	0.592	-3.36	1.143	0.677	1.6	32
Back Upward	26965/841.5	QPSK	0.521	-2.60	1.161	0.605	1.6	/
50%RB#0								
Front Upward	26915/836.5	QPSK	0.364	-2.14	1.084	0.395	1.6	/
Back Upward	26915/836.5	QPSK	0.448	-0.17	1.084	0.486	1.6	/
Left	26915/836.5	QPSK	0.078	-2.57	1.084	0.085	1.6	/
Right	26915/836.5	QPSK	0.063	1.41	1.084	0.068	1.6	/
Bottom	26915/836.5	QPSK	0.127	-1.26	1.084	0.138	1.6	/



Results overview of FDD LTE Band 26(Part 90), QPSK, 10MHz Bandwidth

ANT 3

Head	Channel /Frequency	Mode	SAR Value (W/kg)1-g	Power drift(%)	Scaled Factor	Scaled SAR (W/Kg)1-g	Limit (W/kg)	SAR Plot.
1RB#0								
Right Cheek	26740/819.0	QPSK	0.302	-0.19	1.119	0.338	1.6	/
Right Tilted	26740/819.0	QPSK	0.134	-2.16	1.119	0.150	1.6	/
Left Cheek	26740/819.0	QPSK	0.351	-0.36	1.119	0.393	1.6	33
Left Tilted	26740/819.0	QPSK	0.160	1.04	1.119	0.179	1.6	/
50%RB#0								
Right Cheek	26740/819.0	QPSK	0.220	-0.77	1.117	0.246	1.6	/
Right Tilted	26740/819.0	QPSK	0.104	-2.19	1.117	0.116	1.6	/
Left Cheek	26740/819.0	QPSK	0.243	1.13	1.117	0.271	1.6	/
Left Tilted	26740/819.0	QPSK	0.119	-3.16	1.117	0.133	1.6	/
Body-worn(10mm)	Channel /Frequency	Mode	SAR Value (W/kg)1-g	Power drift(%)	Scaled Factor	Scaled SAR (W/Kg)1-g	Limit (W/kg)	SAR Plot.
1RB#0								
Front Upward	26740/819.0	QPSK	0.523	-1.78	1.119	0.585	1.6	/
Back Upward	26740/819.0	QPSK	0.618	0.32	1.119	0.692	1.6	34
50%RB#0								
Front Upward	26740/819.0	QPSK	0.417	-2.47	1.117	0.466	1.6	/
Back Upward	26740/819.0	QPSK	0.502	0.80	1.117	0.561	1.6	/
Hotspot(10mm)	Channel /Frequency	Mode	SAR Value (W/kg)1-g	Power drift(%)	Scaled Factor	Scaled SAR (W/Kg)1-g	Limit (W/kg)	SAR Plot.
1RB#0								
Front Upward	26740/819.0	QPSK	0.523	-1.78	1.119	0.585	1.6	/
Back Upward	26740/819.0	QPSK	0.618	0.32	1.119	0.692	1.6	34
Left	26740/819.0	QPSK	0.119	-2.64	1.119	0.133	1.6	/
Right	26740/819.0	QPSK	0.094	0.24	1.119	0.105	1.6	/
Bottom	26740/819.0	QPSK	0.153	-3.55	1.119	0.171	1.6	/
50%RB#0								
Front Upward	26740/819.0	QPSK	0.417	-2.47	1.117	0.466	1.6	/
Back Upward	26740/819.0	QPSK	0.502	0.80	1.117	0.561	1.6	/
Left	26740/819.0	QPSK	0.084	0.38	1.117	0.094	1.6	/
Right	26740/819.0	QPSK	0.070	-1.05	1.117	0.078	1.6	/
Bottom	26740/819.0	QPSK	0.110	-1.94	1.117	0.123	1.6	/



Results overview of TDD LTE Band 38, QPSK, 20MHz Bandwidth

ANT 3

Head	Channel /Frequency	Mode	SAR Value (W/kg)1-g	Power drift(%)	Scaled Factor	Scaled SAR (W/Kg)1-g	Limit (W/kg)	SAR Plot.
1RB#0								
Right Cheek	38000/2595.0	QPSK	0.156	-1.32	1.140	0.178	1.6	/
Right Tilted	38000/2595.0	QPSK	0.072	2.28	1.140	0.082	1.6	/
Left Cheek	38000/2595.0	QPSK	0.205	0.23	1.140	0.234	1.6	/
Left Tilted	38000/2595.0	QPSK	0.086	-1.95	1.140	0.098	1.6	/
Left Cheek	37850/2580.0	QPSK	0.218	-3.15	1.148	0.250	1.6	35
Left Cheek	38150/2610.0	QPSK	0.191	0.13	1.119	0.214	1.6	/
50%RB#0								
Right Cheek	38000/2595.0	QPSK	0.117	-0.87	1.059	0.124	1.6	/
Right Tilted	38000/2595.0	QPSK	0.053	0.63	1.059	0.056	1.6	/
Left Cheek	38000/2595.0	QPSK	0.132	-2.06	1.059	0.140	1.6	/
Left Tilted	38000/2595.0	QPSK	0.060	0.14	1.059	0.064	1.6	/
Body-worn(10mm)	Channel /Frequency	Mode	SAR Value (W/kg)1-g	Power drift(%)	Scaled Factor	Scaled SAR (W/Kg)1-g	Limit (W/kg)	SAR Plot.
1RB#0								
Front Upward	38000/2595.0	QPSK	0.291	-1.17	1.140	0.332	1.6	/
Back Upward	38000/2595.0	QPSK	0.435	-0.36	1.140	0.496	1.6	/
Back Upward	37850/2580.0	QPSK	0.459	-1.34	1.148	0.527	1.6	36
Back Upward	38150/2610.0	QPSK	0.410	2.48	1.119	0.459	1.6	/
50%RB#0								
Front Upward	38000/2595.0	QPSK	0.205	0.81	1.059	0.217	1.6	/
Back Upward	38000/2595.0	QPSK	0.344	-1.78	1.059	0.364	1.6	/
Hotspot(10mm)	Channel /Frequency	Mode	SAR Value (W/kg)1-g	Power drift(%)	Scaled Factor	Scaled SAR (W/Kg)1-g	Limit (W/kg)	SAR Plot.
1RB#0								
Front Upward	38000/2595.0	QPSK	0.291	-1.17	1.140	0.332	1.6	/
Back Upward	38000/2595.0	QPSK	0.435	-0.36	1.140	0.496	1.6	/
Left	38000/2595.0	QPSK	0.097	-1.31	1.140	0.111	1.6	/
Right	38000/2595.0	QPSK	0.073	0.54	1.140	0.083	1.6	/
Bottom	38000/2595.0	QPSK	0.185	3.03	1.140	0.211	1.6	/
Back Upward	37850/2580.0	QPSK	0.459	-1.34	1.148	0.527	1.6	36
Back Upward	38150/2610.0	QPSK	0.410	2.48	1.119	0.459	1.6	/
50%RB#0								
Front Upward	38000/2595.0	QPSK	0.205	0.81	1.059	0.217	1.6	/
Back Upward	38000/2595.0	QPSK	0.344	-1.78	1.059	0.364	1.6	/
Left	38000/2595.0	QPSK	0.078	-2.25	1.059	0.083	1.6	/
Right	38000/2595.0	QPSK	0.064	1.03	1.059	0.068	1.6	/
Bottom	38000/2595.0	QPSK	0.139	-0.40	1.059	0.147	1.6	/



Results overview of TDD LTE Band 41, QPSK, 20MHz Bandwidth

ANT 3

Head	Channel /Frequency	Mode	SAR Value (W/kg)1-g	Power drift(%)	Scaled Factor	Scaled SAR (W/Kg)1-g	Limit (W/kg)	SAR Plot.
1RB#0								
Right Cheek	40740/2605.0	QPSK	0.153	1.19	1.146	0.175	1.6	/
Right Tilted	40740/2605.0	QPSK	0.071	-0.54	1.146	0.081	1.6	/
Left Cheek	40740/2605.0	QPSK	0.187	-2.24	1.146	0.214	1.6	37
Left Tilted	40740/2605.0	QPSK	0.088	-0.18	1.146	0.101	1.6	/
Left Cheek	40340/2565.0	QPSK	0.165	-2.51	1.172	0.193	1.6	/
Left Cheek	41140/2645.0	QPSK	0.173	-0.39	1.153	0.199	1.6	/
50%RB#0								
Right Cheek	40740/2605.0	QPSK	0.115	-2.30	1.059	0.122	1.6	/
Right Tilted	40740/2605.0	QPSK	0.057	-0.64	1.059	0.060	1.6	/
Left Cheek	40740/2605.0	QPSK	0.129	0.12	1.059	0.137	1.6	/
Left Tilted	40740/2605.0	QPSK	0.061	-1.22	1.059	0.065	1.6	/
Body-worn(10mm)	Channel /Frequency	Mode	SAR Value (W/kg)1-g	Power drift(%)	Scaled Factor	Scaled SAR (W/Kg)1-g	Limit (W/kg)	SAR Plot.
1RB#0								
Front Upward	40740/2605.0	QPSK	0.321	2.77	1.146	0.368	1.6	/
Back Upward	40740/2605.0	QPSK	0.470	0.65	1.146	0.539	1.6	38
Back Upward	40340/2565.0	QPSK	0.455	-1.29	1.172	0.533	1.6	/
Back Upward	41140/2645.0	QPSK	0.415	-0.74	1.153	0.478	1.6	/
50%RB#0								
Front Upward	40740/2605.0	QPSK	0.242	-3.01	1.059	0.256	1.6	/
Back Upward	40740/2605.0	QPSK	0.368	1.09	1.059	0.390	1.6	/
Hotspot(10mm)	Channel /Frequency	Mode	SAR Value (W/kg)1-g	Power drift(%)	Scaled Factor	Scaled SAR (W/Kg)1-g	Limit (W/kg)	SAR Plot.
1RB#0								
Front Upward	40740/2605.0	QPSK	0.321	2.77	1.146	0.368	1.6	/
Back Upward	40740/2605.0	QPSK	0.470	0.65	1.146	0.539	1.6	38
Left	40740/2605.0	QPSK	0.135	-3.82	1.146	0.155	1.6	/
Right	40740/2605.0	QPSK	0.107	0.24	1.146	0.123	1.6	/
Bottom	40740/2605.0	QPSK	0.229	-2.61	1.146	0.262	1.6	/
Back Upward	40340/2565.0	QPSK	0.455	-1.29	1.172	0.533	1.6	/
Back Upward	41140/2645.0	QPSK	0.415	-0.74	1.153	0.478	1.6	/
50%RB#0								
Front Upward	40740/2605.0	QPSK	0.242	-3.01	1.059	0.256	1.6	/
Back Upward	40740/2605.0	QPSK	0.368	1.09	1.059	0.390	1.6	/
Left	40740/2605.0	QPSK	0.094	-2.06	1.059	0.100	1.6	/
Right	40740/2605.0	QPSK	0.073	-0.63	1.059	0.077	1.6	/
Bottom	40740/2605.0	QPSK	0.178	-1.41	1.059	0.189	1.6	/



Results overview of FDD LTE Band 66, QPSK, 20MHz Bandwidth

ANT 3

Head	Channel /Frequency	Mode	SAR Value (W/kg)1-g	Power drift(%)	Scaled Factor	Scaled SAR (W/Kg)1-g	Limit (W/kg)	SAR Plot.
1RB#0								
Right Cheek	132322/1745.0	QPSK	0.639	-1.55	1.117	0.714	1.6	/
Right Tilted	132322/1745.0	QPSK	0.297	-2.13	1.117	0.332	1.6	/
Left Cheek	132322/1745.0	QPSK	0.724	0.36	1.117	0.809	1.6	/
Left Tilted	132322/1745.0	QPSK	0.325	2.21	1.117	0.363	1.6	/
Right Cheek	132072/1720.0	QPSK	0.748	-0.25	1.125	0.842	1.6	39
Right Cheek	132572/1770.0	QPSK	0.682	-1.02	1.172	0.799	1.6	/
50%RB#0								
Right Cheek	132322/1745.0	QPSK	0.518	-2.66	1.107	0.573	1.6	/
Right Tilted	132322/1745.0	QPSK	0.234	0.65	1.107	0.259	1.6	/
Left Cheek	132322/1745.0	QPSK	0.592	-1.91	1.107	0.655	1.6	/
Left Tilted	132322/1745.0	QPSK	0.267	-0.57	1.107	0.296	1.6	/
100%RB#0								
Right Cheek	132322/1745.0	QPSK	0.502	-0.88	1.135	0.570	1.6	/
Right Tilted	132322/1745.0	QPSK	0.225	-1.25	1.135	0.255	1.6	/
Left Cheek	132322/1745.0	QPSK	0.567	2.14	1.135	0.644	1.6	/
Left Tilted	132322/1745.0	QPSK	0.239	-1.47	1.135	0.271	1.6	/
Body-worn(10mm)	Channel /Frequency	Mode	SAR Value (W/kg)1-g	Power drift(%)	Scaled Factor	Scaled SAR (W/Kg)1-g	Limit (W/kg)	SAR Plot.
1RB#0								
Front Upward	132322/1745.0	QPSK	0.565	-0.43	1.117	0.631	1.6	/
Back Upward	132322/1745.0	QPSK	0.708	1.33	1.117	0.791	1.6	/
Back Upward	132072/1720.0	QPSK	0.729	-1.02	1.125	0.820	1.6	40
Back Upward	132572/1770.0	QPSK	0.692	-0.21	1.172	0.811	1.6	/
50%RB#0								
Front Upward	132322/1745.0	QPSK	0.448	-1.96	1.107	0.496	1.6	/
Back Upward	132322/1745.0	QPSK	0.559	-0.67	1.107	0.619	1.6	/
100%RB#0								
Front Upward	132322/1745.0	QPSK	0.426	-2.53	1.135	0.484	1.6	/
Back Upward	132322/1745.0	QPSK	0.518	-0.55	1.135	0.588	1.6	/
Hotspot(10mm)	Channel /Frequency	Mode	SAR Value (W/kg)1-g	Power drift(%)	Scaled Factor	Scaled SAR (W/Kg)1-g	Limit (W/kg)	SAR Plot.
1RB#0								
Front Upward	132322/1745.0	QPSK	0.565	-0.43	1.117	0.631	1.6	/
Back Upward	132322/1745.0	QPSK	0.708	1.33	1.117	0.791	1.6	/
Left	132322/1745.0	QPSK	0.202	-2.24	1.117	0.226	1.6	/



Right	132322/1745.0	QPSK	0.151	0.19	1.117	0.169	1.6	/
Bottom	132322/1745.0	QPSK	0.429	-2.58	1.117	0.479	1.6	/
Back Upward	132072/1720.0	QPSK	0.729	-1.33	1.125	0.820	1.6	40
Back Upward	132572/1770.0	QPSK	0.692	-0.21	1.172	0.811	1.6	/
50%RB#0								
Front Upward	132322/1745.0	QPSK	0.448	-1.96	1.107	0.496	1.6	/
Back Upward	132322/1745.0	QPSK	0.559	-0.67	1.107	0.619	1.6	/
Left	132322/1745.0	QPSK	0.143	-2.05	1.107	0.158	1.6	/
Right	132322/1745.0	QPSK	0.110	0.19	1.107	0.122	1.6	/
Bottom	132322/1745.0	QPSK	0.305	0.28	1.107	0.338	1.6	/
100%RB#0								
Front Upward	132322/1745.0	QPSK	0.426	-2.53	1.135	0.484	1.6	/
Back Upward	132322/1745.0	QPSK	0.518	-0.55	1.135	0.588	1.6	/
Left	132322/1745.0	QPSK	0.131	-3.15	1.135	0.149	1.6	/
Right	132322/1745.0	QPSK	0.102	-0.58	1.135	0.116	1.6	/
Bottom	132322/1745.0	QPSK	0.294	-0.26	1.135	0.334	1.6	/



Results overview of WIFI2.4G 802.11b

ANT 2

Head	Channel /Frequency	Mode	SAR Value (W/kg)1-g	Power drift(%)	Scaled Factor	Scaled SAR (W/Kg)1-g	Limit (W/kg)	SAR Plot.
Right Cheek	6/2437.0	802.11b	0.328	-0.77	1.062	0.348	1.6	/
Right Tilted	6/2437.0	802.11b	0.199	1.86	1.062	0.211	1.6	/
Left Cheek	6/2437.0	802.11b	0.304	-0.58	1.062	0.323	1.6	/
Left Tilted	6/2437.0	802.11b	0.173	-2.43	1.062	0.184	1.6	/
Right Cheek	1/2402.0	802.11b	0.315	-1.58	1.102	0.347	1.6	/
Right Cheek	11/2462.0	802.11b	0.351	2.69	1.109	0.389	1.6	41
Body-worn(10mm)	Channel /Frequency	Mode	SAR Value (W/kg)1-g	Power drift(%)	Scaled Factor	Scaled SAR (W/Kg)1-g	Limit (W/kg)	SAR Plot.
Front Upward	6/2437.0	802.11b	0.119	-2.37	1.062	0.126	1.6	/
Back Upward	6/2437.0	802.11b	0.164	-0.44	1.062	0.174	1.6	/
Back Upward	1/2402.0	802.11b	0.152	-0.20	1.102	0.168	1.6	/
Back Upward	11/2462.0	802.11b	0.179	-1.23	1.109	0.199	1.6	42
Hotspot(10mm)	Channel /Frequency	Mode	SAR Value (W/kg)1-g	Power drift(%)	Scaled Factor	Scaled SAR (W/Kg)1-g	Limit (W/kg)	SAR Plot.
Front Upward	6/2437.0	802.11b	0.119	-2.37	1.062	0.126	1.6	/
Back Upward	6/2437.0	802.11b	0.164	-0.44	1.062	0.174	1.6	/
Left	6/2437.0	802.11b	0.065	-1.46	1.062	0.069	1.6	/
Top	6/2437.0	802.11b	0.110	-2.41	1.062	0.117	1.6	/
Back Upward	1/2402.0	802.11b	0.152	-0.20	1.102	0.168	1.6	/
Back Upward	11/2462.0	802.11b	0.179	-1.23	1.109	0.199	1.6	42

**Results overview of WIFI U-NII 1 802.11a**

ANT 2

Head	Channel /Frequency	Mode	SAR Value (W/kg)1-g	Power drift(%)	Scaled Factor	Scaled SAR (W/Kg)1-g	Limit (W/kg)	SAR Plot.
Right Cheek	44/5220.0	802.11a	0.470	1.60	1.153	0.542	1.6	/
Right Tilted	44/5220.0	802.11a	0.290	-0.51	1.153	0.334	1.6	/
Left Cheek	44/5220.0	802.11a	0.381	-2.75	1.153	0.439	1.6	/
Left Tilted	44/5220.0	802.11a	0.205	-1.77	1.153	0.236	1.6	/
Right Cheek	36/5180.0	802.11a	0.405	-0.81	1.140	0.462	1.6	/
Right Cheek	48/5240.0	802.11a	0.498	0.76	1.089	0.542	1.6	43
Body-worn(10mm)	Channel /Frequency	Mode	SAR Value (W/kg)1-g	Power drift(%)	Scaled Factor	Scaled SAR (W/Kg)1-g	Limit (W/kg)	SAR Plot.
Front Upward	44/5220.0	802.11a	0.127	-0.57	1.153	0.146	1.6	/
Back Upward	44/5220.0	802.11a	0.185	1.97	1.153	0.213	1.6	/
Back Upward	36/5180.0	802.11a	0.172	-1.51	1.140	0.196	1.6	/
Back Upward	48/5240.0	802.11a	0.220	-0.79	1.089	0.240	1.6	44

Results overview of WIFI U-NII 2a 802.11a

ANT 2

Head	Channel /Frequency	Mode	SAR Value (W/kg)1-g	Power drift(%)	Scaled Factor	Scaled SAR (W/Kg)1-g	Limit (W/kg)	SAR Plot.
Right Cheek	60/5300.0	802.11a	0.237	-1.36	1.164	0.276	1.6	45
Right Tilted	60/5300.0	802.11a	0.148	0.54	1.164	0.172	1.6	/
Left Cheek	60/5300.0	802.11a	0.224	-2.60	1.164	0.261	1.6	/
Left Tilted	60/5300.0	802.11a	0.130	-1.42	1.164	0.151	1.6	/
Right Cheek	52/5260.0	802.11a	0.209	-0.15	1.172	0.245	1.6	/
Right Cheek	64/5320.0	802.11a	0.222	-0.86	1.164	0.258	1.6	/
Body-worn(10mm)	Channel /Frequency	Mode	SAR Value (W/kg)1-g	Power drift(%)	Scaled Factor	Scaled SAR (W/Kg)1-g	Limit (W/kg)	SAR Plot.
Front Upward	60/5300.0	802.11a	0.142	-1.76	1.164	0.165	1.6	/
Back Upward	60/5300.0	802.11a	0.203	0.47	1.164	0.236	1.6	46
Back Upward	52/5260.0	802.11a	0.165	-0.21	1.172	0.193	1.6	/
Back Upward	64/5320.0	802.11a	0.179	-1.34	1.164	0.208	1.6	/

**Results overview of WIFI U-NII 2c 802.11a**

ANT 2

Head	Channel /Frequency	Mode	SAR Value (W/kg)1-g	Power drift(%)	Scaled Factor	Scaled SAR (W/Kg)1-g	Limit (W/kg)	SAR Plot.
Right Cheek	120/5600.0	802.11a	0.325	0.54	1.140	0.371	1.6	/
Right Tilted	120/5600.0	802.11a	0.185	-2.06	1.140	0.211	1.6	/
Left Cheek	120/5600.0	802.11a	0.297	-2.30	1.140	0.339	1.6	/
Left Tilted	120/5600.0	802.11a	0.162	-0.27	1.140	0.185	1.6	/
Right Cheek	100/5500.0	802.11a	0.345	-1.37	1.175	0.405	1.6	47
Right Cheek	140/5700.0	802.11a	0.301	-0.93	1.089	0.328	1.6	/
Body-worn(10mm)	Channel /Frequency	Mode	SAR Value (W/kg)1-g	Power drift(%)	Scaled Factor	Scaled SAR (W/Kg)1-g	Limit (W/kg)	SAR Plot.
Front Upward	120/5600.0	802.11a	0.099	-3.14	1.140	0.113	1.6	/
Back Upward	120/5600.0	802.11a	0.149	-0.54	1.140	0.170	1.6	/
Back Upward	100/5500.0	802.11a	0.176	-2.07	1.175	0.207	1.6	48
Back Upward	140/5700.0	802.11a	0.131	-0.99	1.089	0.143	1.6	/

Results overview of WIFI U-NII 3 802.11a

ANT 2

Head	Channel /Frequency	Mode	SAR Value (W/kg)1-g	Power drift(%)	Scaled Factor	Scaled SAR (W/Kg)1-g	Limit (W/kg)	SAR Plot.
Right Cheek	157/5785.0	802.11a	0.171	0.35	1.178	0.201	1.6	/
Right Tilted	157/5785.0	802.11a	0.092	-0.68	1.178	0.108	1.6	/
Left Cheek	157/5785.0	802.11a	0.142	-1.54	1.178	0.167	1.6	/
Left Tilted	157/5785.0	802.11a	0.076	-2.41	1.178	0.090	1.6	/
Right Cheek	149/5745.0	802.11a	0.163	-3.15	1.122	0.183	1.6	/
Right Cheek	165/5825.0	802.11a	0.197	-0.19	1.104	0.217	1.6	49
Body-worn(10mm)	Channel /Frequency	Mode	SAR Value (W/kg)1-g	Power drift(%)	Scaled Factor	Scaled SAR (W/Kg)1-g	Limit (W/kg)	SAR Plot.
Front Upward	157/5785.0	802.11a	0.085	-1.19	1.178	0.100	1.6	/
Back Upward	157/5785.0	802.11a	0.161	-0.65	1.178	0.190	1.6	/
Back Upward	149/5745.0	802.11a	0.130	0.54	1.122	0.146	1.6	/
Back Upward	165/5825.0	802.11a	0.188	-2.61	1.104	0.208	1.6	50

**Results overview of BT**

ANT 2

Head	Channel /Frequency	Mode	SAR Value (W/kg)1-g	Power drift(%)	Scaled Factor	Scaled SAR (W/Kg)1-g	Limit (W/kg)	SAR Plot.
Right Cheek	39/2441.0	DH5	0.125	1.22	1.112	0.139	1.6	/
Right Tilted	39/2441.0	DH5	0.069	-0.54	1.112	0.077	1.6	/
Left Cheek	39/2441.0	DH5	0.104	3.32	1.112	0.116	1.6	/
Left Tilted	39/2441.0	DH5	0.056	-1.47	1.112	0.062	1.6	/
Right Cheek	0/2402.0	DH5	0.131	-2.42	1.076	0.141	1.6	51
Right Cheek	78/2480.0	DH5	0.110	-1.49	1.114	0.123	1.6	/
Body-worn(10mm)	Channel /Frequency	Mode	SAR Value (W/kg)1-g	Power drift(%)	Scaled Factor	Scaled SAR (W/Kg)1-g	Limit (W/kg)	SAR Plot.
Front Upward	39/2441.0	DH5	0.071	0.54	1.112	0.079	1.6	/
Back Upward	39/2441.0	DH5	0.104	1.77	1.112	0.116	1.6	/
Back Upward	0/2402.0	DH5	0.113	0.31	1.076	0.122	1.6	52
Back Upward	78/2480.0	DH5	0.092	-2.06	1.114	0.102	1.6	/

Note:

Per KDB941225 D06 v02r01, When the antenna-to-edge distance is greater than 2.5cm, such position does not need to be tested. As the manufacture requirement the separation distance use 5mm for Hotspot mode.

Per KDB Publication 941225 D01 v03r01. RMC 12.2kbps was as primary mode SAR, when the primary mode SAR less than 1.2W/kg, secondary SAR (HSPA) was not requires.

When the 1-g SAR for the mid-band channel or the channel with the highest output power satisfy the following conditions, testing of the other channels in the band is not required. (Per KDB 447498 D01 General RF Exposure Guidance v06)

- ≤ 0.8 W/kg, when the transmission band is ≤ 100 MHz
- ≤ 0.6 W/kg, when the transmission band is between 100 MHz and 200 MHz
- ≤ 0.4 W/kg, when the transmission band is ≥ 200 MHz



11. Simultaneous Transmissions Analysis

Localized Specific Absorption Rate (SAR) of this portable wireless device has been measured in all cases requested by the relevant standards cited in Clause 6 of this report. Maximum localized SAR is **below** exposure limits specified in the relevant standards.

Simultaneous SAR

No.	Transmitter Combinations	Head	Body	Hotspot
1	WWAN + WLAN 2.4GHz	Support	Support	Support
2	WWAN + WLAN 5GHz	Support	Support	No
3	WWAN+ Bluetooth	Support	Support	No

Note:

1. EUT will choose each GSM, WCDMA, LTE according to the network signal condition; therefore, they will not operate simultaneously at any moment.
2. The reported SAR summation is calculated based on the same configuration and test position.



Simultaneous Tx Combination of GSM/WCDMA/LTE and BT/WIFI (Head)

Test Position/Freq.	Right Cheek	Right Tilted	Left Cheek	Left Tilted
GSM 850 ANT 3	0.255	0.110	0.280	0.117
GSM 1900 ANT 3	0.204	0.095	0.255	0.103
CDMA BC 0 ANT 3	0.332	0.126	0.425	0.143
WCDMA 850 ANT 3	0.355	0.142	0.382	0.149
WCDMA 1700 ANT 3	0.450	0.178	0.614	0.234
WCDMA 1900 ANT 3	0.487	0.208	0.571	0.258
LTE Band 2 ANT 3	0.639	0.245	0.788	0.341
LTE Band 4 ANT 3	0.554	0.236	0.739	0.327
LTE Band 5 ANT 3	0.309	0.136	0.380	0.164
LTE Band 7 ANT 3	0.525	0.234	0.733	0.311
LTE Band 12 ANT 3	0.218	0.100	0.259	0.119
LTE Band 13 ANT 3	0.163	0.071	0.187	0.081
LTE Band 17 ANT 3	0.188	0.084	0.224	0.101
LTE Band 25 ANT 3	0.519	0.253	0.765	0.340
LTE Band 26 (Part 22)ANT 3	0.317	0.135	0.384	0.159
LTE Band 26 (Part 90)ANT 3	0.338	0.150	0.393	0.179
LTE Band 38 ANT 3	0.178	0.082	0.250	0.098
LTE Band 41 ANT 3	0.175	0.081	0.214	0.101
LTE Band 66 ANT 3	0.714	0.332	0.842	0.363
WIFI 2.4G ANT 3	0.389	0.211	0.323	0.184
WIFI 5G U-NII 1 ANT 2	0.542	0.334	0.439	0.236
WIFI 5G U-NII 2a ANT 2	0.276	0.172	0.261	0.151
WIFI 5G U-NII 2c ANT 2	0.405	0.211	0.339	0.185
WIFI 5G U-NII 3 ANT 2	0.217	0.108	0.167	0.090
BT ANT 2	0.141	0.077	0.116	0.062
WWAN MAX SAR	0.714	0.332	0.842	0.363
WIFI/BT MAX SAR	0.542	0.334	0.439	0.236
Max Simultaneous \sum 1-g SAR(W/Kg) (WIFI/BT MAX SAR +WWAN ANT MAX SAR)	1.256	0.666	1.281	0.599



Simultaneous Tx Combination of GSM/WCDMA/LTE and BT/WIFI (Body).

Test Position		Front	Back	Left	Right	Top	Bottom
Body MAX 1-g SAR(W/Kg) 10mm distance	GSM 850 ANT 3	0.147	0.341	/	/	/	/
	GSM 1900 ANT 3	0.125	0.450	/	/	/	/
	CDMA BC 0 ANT 3	0.203	0.479	/	/	/	/
	WCDMA 850 ANT 3	0.325	0.703	/	/	/	/
	WCDMA 1700 ANT 3	0.758	0.709	/	/	/	/
	WCDMA 1900 ANT 3	0.551	1.051	/	/	/	/
	LTE Band 2 ANT 3	0.717	1.188	/	/	/	/
	LTE Band 4 ANT 3	0.733	0.824	/	/	/	/
	LTE Band 5 ANT 3	0.505	0.641	/	/	/	/
	LTE Band 7 ANT 3	0.542	0.832	/	/	/	/
	LTE Band 12 ANT 3	0.555	0.649	/	/	/	/
	LTE Band 13 ANT 3	0.531	0.622	/	/	/	/
	LTE Band 17 ANT 3	0.551	0.682	/	/	/	/
	LTE Band 25 ANT 3	0.727	1.289	/	/	/	/
	LTE Band 26 (Part 22)ANT 3	0.544	0.677	/	/	/	/
	LTE Band 26 (Part 90)ANT 3	0.585	0.692	/	/	/	/
	LTE Band 38 ANT 3	0.332	0.527	/	/	/	/
	LTE Band 41 ANT 3	0.368	0.539	/	/	/	/
	LTE Band 66 ANT 3	0.631	0.820	/	/	/	/
	WIFI 2.4G ANT 3	0.126	0.199	/	/	/	/
	WIFI 5G U-NII 1 ANT 2	0.146	0.240	/	/	/	/
WIFI 5G U-NII 2a ANT 2	0.165	0.236	/	/	/	/	
WIFI 5G U-NII 2c ANT 2	0.113	0.207	/	/	/	/	
WIFI 5G U-NII 3 ANT 2	0.100	0.208	/	/	/	/	
BT ANT 2	0.079	0.122	/	/	/	/	
WWAN MAX SAR	0.758	1.289	/	/	/	/	
WIFI/BT MAX SAR	0.165	0.240	/	/	/	/	
Max Simultaneous \sum 10-g SAR(W/Kg) (WIFI/BT MAX SAR +WWAN ANT MAX SAR)	0.923	1.529	/	/	/	/	



Simultaneous Tx Combination of GSM/WCDMA/LTE and WIFI (Hotspot).

Test Position		Front	Back	Left	Right	Top	Bottom
Hotspot MAX 1-g SAR(W/Kg) 10mm distance	GSM 850 ANT 3	0.147	0.341	0.101	0.071	/	0.085
	GSM 1900 ANT 3	0.125	0.450	0.119	0.105	/	0.523
	CDMA BC 0 ANT 3	0.203	0.479	0.140	0.097	/	0.125
	WCDMA 850 ANT 3	0.325	0.703	0.145	0.110	/	0.164
	WCDMA 1700 ANT 3	0.758	0.709	0.189	0.129	/	0.560
	WCDMA 1900 ANT 3	0.551	1.051	0.248	0.172	/	1.029
	LTE Band 2 ANT 3	0.717	1.188	0.223	0.153	/	1.005
	LTE Band 4 ANT 3	0.733	0.824	0.228	0.160	/	0.567
	LTE Band 5 ANT 3	0.505	0.641	0.126	0.100	/	0.169
	LTE Band 7 ANT 3	0.542	0.832	0.158	0.102	/	0.597
	LTE Band 12 ANT 3	0.555	0.649	0.112	0.087	/	0.240
	LTE Band 13 ANT 3	0.531	0.622	0.122	0.083	/	0.182
	LTE Band 17 ANT 3	0.551	0.682	0.147	0.106	/	0.217
	LTE Band 25 ANT 3	0.727	1.289	0.305	0.218	/	1.019
	LTE Band 26 (Part 22)ANT 3	0.544	0.677	0.115	0.097	/	0.180
	LTE Band 26 (Part 90)ANT 3	0.585	0.692	0.133	0.105	/	0.171
	LTE Band 38 ANT 3	0.332	0.527	0.111	0.083	/	0.211
	LTE Band 41 ANT 3	0.368	0.539	0.155	0.123	/	0.262
	LTE Band 66 ANT 3	0.631	0.820	0.226	0.169	/	0.479
WIFI 2.4G ANT 3	0.126	0.199	0.069	/	0.117	/	
WWAN MAX SAR		0.758	1.289	0.305	0.218	/	1.029
WIFI/BT MAX SAR		0.126	0.199	0.069	/	0.117	/
Max Simultaneous \sum 10-g SAR(W/Kg) (WIFI/BT MAX SAR +WWAN ANT MAX SAR)		0.884	1.488	0.374	0.218	0.117	1.029

SAR to Peak Location Separation Ratio (SPLSR)

As the Sum of the SAR is not greater than 1.6 W/kg SPLSR assessment is not required

12.Measurement Uncertainty

No.	Uncertainty Component	Type	Uncertainty Value (%)	Probability Distribution	k	ci	Standard Uncertainty (%) $u_i(\%)$	Degree of freedom ν_{eff} or ν_i
Measurement System								
1	- Probe Calibration	B	5.8	N	1	1	5.8	∞
2	- Axial isotropy	B	3.5	R	$\sqrt{3}$	0.5	1.43	∞
3	- Hemispherical Isotropy	B	5.9	R	$\sqrt{3}$	0.5	2.41	∞
4	- Boundary Effect	B	1	R	$\sqrt{3}$	1	0.58	∞
5	- Linearity	B	4.7	R	$\sqrt{3}$	1	2.71	∞
6	- System Detection Limits	B	1.0	R	$\sqrt{3}$	1	0.58	∞
7	Modulation response	B	3	N	1	1	3.00	
8	- Readout Electronics	B	0.5	N	1	1	0.50	∞
9	- Response Time	B	1.4	R	$\sqrt{3}$	1	0.81	∞
10	- Integration Time	B	3.0	R	$\sqrt{3}$	1	1.73	∞
11	- RF Ambient Conditions	B	3.0	R	$\sqrt{3}$	1	1.73	∞
12	- Probe Position Mechanical tolerance	B	1.4	R	$\sqrt{3}$	1	0.81	∞
13	- Probe Position with respect to Phantom Shell	B	1.4	R	$\sqrt{3}$	1	0.81	∞
14	- Extrapolation, Interpolation and Integration Algorithms for Max. SAR evaluation	B	2.3	R	$\sqrt{3}$	1	1.33	∞
Uncertainties of the DUT								



15	- Position of the DUT	A	2.6	N	$\sqrt{3}$	1	2.6	5
16	- Holder of the DUT	A	3	N	$\sqrt{3}$	1	3.0	5
17	- Output Power Variation – SAR drift measurement	B	5.0	R	$\sqrt{3}$	1	2.89	∞
Phantom and Tissue Parameters								
18	- Phantom Uncertainty(shape and thickness tolerances)	B	4	R	$\sqrt{3}$	1	2.31	∞
19	Uncertainty in SAR correction for deviation(in permittivity and conductivity)	B	2	N	1	1	2.00	
20	- Liquid Conductivity Target – tolerance	B	2.5	R	$\sqrt{3}$	0.6	1.95	∞
21	- Liquid Conductivity – measurement Uncertainty)	B	4	N	$\sqrt{3}$	1	0.92	9
22	- Liquid Permittivity Target tolerance	B	2.5	R	$\sqrt{3}$	0.6	1.95	∞
23	- Liquid Permittivity – measurement uncertainty	B	5	N	$\sqrt{3}$	1	1.15	∞
Combined Standard Uncertainty				RSS			10.63	
Expanded uncertainty (Confidence interval of 95 %)				K=2			21.26	

System Check Uncertainty

No.	Uncertainty Component	Type	Uncertainty Value (%)	Probability Distribution	k	ci	Standard Uncertainty (%) $u_i(\%)$	Degree of freedom V_{eff} or v_i
Measurement System								
1	- Probe Calibration	B	5.8	N	1	1	5.8	∞
2	- Axial isotropy	B	3.5	R	$\sqrt{3}$	0.5	1.43	∞



3	– Hemispherical Isotropy	B	5.9	R	$\sqrt{3}$	0.5	2.41	∞
4	- Boundary Effect	B	1	R	$\sqrt{3}$	1	0.58	∞
5	- Linearity	B	4.7	R	$\sqrt{3}$	1	2.71	∞
6	- System Detection Limits	B	1	R	$\sqrt{3}$	1	0.58	∞
7	Modulation response	B	0	N	1	1	0.00	
8	- Readout Electronics	B	0.5	N	1	1	0.50	∞
9	- Response Time	B	0.00	R	$\sqrt{3}$	1	0.00	∞
10	- Integration Time	B	1.4	R	$\sqrt{3}$	1	0.81	∞
11	- RF Ambient Conditions	B	3.0	R	$\sqrt{3}$	1	1.73	∞
12	- Probe Position Mechanical tolerance	B	1.4	R	$\sqrt{3}$	1	0.81	∞
13	- Probe Position with respect to Phantom Shell	B	1.4	R	$\sqrt{3}$	1	0.81	∞
14	- Extrapolation, Interpolation and Integration Algorithms for Max. SAR evaluation	B	2.3	R	$\sqrt{3}$	1	1.33	∞
Uncertainties of the DUT								
15	Deviation of experimental source from numerical source	A	4	N	1	1	4.00	5
16	Input Power and SAR drift measurement	A	5	R	$\sqrt{3}$	1	2.89	5
17	Dipole Axis to Liquid Distance	B	2	R	$\sqrt{3}$	1	1.2	∞
Phantom and Tissue Parameters								
18	- Phantom Uncertainty(shape	B	4	R	$\sqrt{3}$	1	2.31	∞



	and thickness tolerances)							
19	Uncertainty in SAR correction for deviation(in permittivity and conductivity)	B	2	N	1	1	2.00	
20	- Liquid Conductivity Target – tolerance	B	2.5	R	$\sqrt{3}$	0.6	1.95	∞
21	- Liquid Conductivity – measurement Uncertainty)	B	4	N	$\sqrt{3}$	1	0.92	9
22	- Liquid Permittivity Target tolerance	B	2.5	R	$\sqrt{3}$	0.6	1.95	∞
23	- Liquid Permittivity – measurement uncertainty	B	5	N	$\sqrt{3}$	1	1.15	∞
Combined Standard Uncertainty				RSS			10.15	
Expanded uncertainty (Confidence interval of 95 %)				K=2			20.29	



13. Equipment List

This table is a complete overview of the SAR measurement equipment. Devices used during the test described are marked .

	EQUIPMENT	Model	Serial number	Calibration Date	Due Date
<input checked="" type="checkbox"/>	SAR Probe	SSE2	0523-EPGO-403	2023/02/14	2024/02/13
<input checked="" type="checkbox"/>	Dipole	SID750	SN 23/15 DIP0G750-378	2023/05/24	2026/05/23
<input checked="" type="checkbox"/>	Dipole	SID835	SN 09/13 DIP0G835-217	2023/05/24	2026/05/23
<input checked="" type="checkbox"/>	Dipole	SID1800	SN 09/13 DIP1G800-216	2023/05/24	2026/05/23
<input checked="" type="checkbox"/>	Dipole	SID1900	SN 09/13 DIP1G900-218	2023/05/24	2026/05/23
<input checked="" type="checkbox"/>	Dipole	SID2300	SN 20/20 DIP2G300-525	2023/05/24	2026/05/23
<input checked="" type="checkbox"/>	Dipole	SID2450	SN 09/13 DIP2G450-220	2023/05/24	2026/05/23
<input checked="" type="checkbox"/>	Dipole	SID2600	SN 32/14 DIP2G600-338	2023/05/24	2026/05/23
<input checked="" type="checkbox"/>	Dipole	SWG5500	SN15/15 WGA39	2023/05/25	2026/05/24
<input checked="" type="checkbox"/>	Multimeter	Keithley-2000	4014020	2023/02/20	2024/02/19
<input checked="" type="checkbox"/>	System Simulator(R&S)	CMW500	149332	2022/12/13	2023/12/12
<input checked="" type="checkbox"/>	KEYSIGHT	E7515A	MY56040357	2023/02/20	2024/02/19
<input checked="" type="checkbox"/>	Vector Network Analyzer(R&S)	ZVB8	100343	2023/02/20	2024/02/19
<input checked="" type="checkbox"/>	PC 3.5 Fixed Match Calibration Kit	ZV-Z32	100571	2023/02/20	2024/02/19
<input checked="" type="checkbox"/>	Dielectric Probe Kit	SCLMP	SN 09/13 OCPG51	2023/02/20	2024/02/19
<input checked="" type="checkbox"/>	Signal Generator	SMU100A	177649	2023/02/20	2024/02/19
<input checked="" type="checkbox"/>	Amplifier	Nucletudes	143060	2023/02/20	2024/02/19
<input checked="" type="checkbox"/>	Directional Coupler	DC6180A	305827	2023/06/15	2024/06/14
<input checked="" type="checkbox"/>	Power Meter	NRP2	103434	2023/02/20	2024/02/19



ANNEX A: Appendix A: SAR System performance Check Plots

(Please See Appendix A)

ANNEX B: Appendix B: SAR Measurement results Plots

(Please See Appendix B)

ANNEX C: Appendix C: Calibration reports

(Please See Appendix C)

ANNEX D: Appendix D: SAR Test Setup

(Please See Appendix D)

—End of the Report—