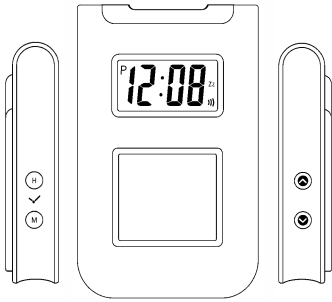


**DIGITAL PHOTO VIEWER – TRAVEL CLOCK  
INSTRUCTION MANUAL**



PF141 LINGO Inst Manual    Size: 8.5cm x 12.6cm

PF141 LINGO Inst Manual    Size: 8.5cm x 12.6cm

**Warning:** Changes or modifications to this unit not expressly approved by the party responsible for compliance could void the user's authority to operate the equipment.

**NOTE:** This equipment has been tested and found to comply with the limits for a Class B digital device, pursuant to Part 15 of the FCC Rules. These limits are designed to provide reasonable protection against harmful interference in a residential installation.

This equipment generates, uses and can radiate radio frequency energy and, if not installed and used in accordance with the instructions, may cause harmful interference to radio communications.

However, there is no guarantee that interference will not occur in a particular installation. If this equipment does cause harmful interference to radio or television reception, which can be determined by turning the equipment off and on, the user is encouraged to try to correct the interference by one or more of the following measures:

- Reorient or relocate the receiving antenna.
- Increase the separation between the equipment and receiver.
- Connect the equipment into an outlet on a circuit different from that to which the receiver is connected.
- Consult the dealer or an experienced radio/TV technician for help.

Shielded cables must be used with this unit to ensure compliance with the Class FCC limits.

This device complies with part 15 of the FCC Rules. Operation is subject to the following two conditions: (1) This device may not cause harmful interference, and (2) this device must accept any interference received, including interference that may cause undesired operation.

### Battery Precautions

Incorrectly using batteries can cause them to burst or leak, possibly damaging the interior of the unit. Note the following precautions.

- Batteries should be replaced by adult.
- Take care to fit the batteries correctly observing the positive (+) side of each battery is facing in the correct directions.
- Do not expose battery to direct heat, let them become shorted, or try to take them apart.
- Only batteries of the same or equivalent type are to be used. Do not mix alkaline, standard (zinc carbon), or re-chargeable (nickel cadmium) batteries.
- Replace whole set of batteries at one time, do not mix old and new batteries.
- Never leave dead battery in the battery compartment.
- Make sure battery compartment is secure.
- To avoid damage caused by leakage of the battery fluid, replace battery once every two years regardless of how much the unit has been used during that time.
- Never try to recharge the battery that comes with the unit.
- Should a battery leak, clean out the battery compartment of the unit immediately, taking care to avoid letting battery fluid come into direct contact with your skin.

**Keep batteries out of reach of small children. If swallowed, consult with physician immediately.**

Thank you for purchasing this model. It is designed to allow quick and easy viewing of digital photographs, while enjoying a travel alarm clock.

Please read this Instruction Manual thoroughly.

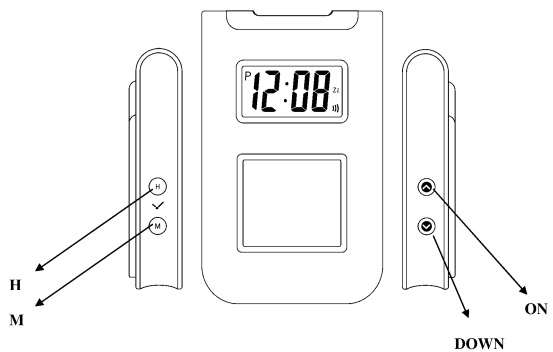
### Specifications

Support Format	JPEG, BMP
Display	1.5" LCD Screen
Storage Capacity	60 Pictures
Connected Jack	USB 1.1
Power	Build in 3.7 V lithium or USB cable charger
Additional Feature	Clock

### Package List

Item	#
Travel Clock Unit	1
CD Driver	1
Instruction Manual	1
USB Cable.	1

### Product Diagram



8

1

PF141 LINGO Inst Manual Size: 8.5cm x 12.6cm

### Using the Travel Clock

#### Setting the Clock

- Slide the lever to "Time Set" position on the back. **Then press the "H" button** to change the hour or "**M**" button to set the minute.
- A "P" will appear indicating PM.
- Slide the lever to "Time" position on the back of the unit to confirm.

#### Setting the Alarm

- Slide the lever to "Alarm Set" position on the back of your unit. **Press the "H" button** to change the hour or "**M**" button to set the minute.
- A "P" will appear indicating PM.

Slide the lever to "Time" position on the back of the unit to confirm.

- To Turn OFF the alarm, slide the lever to the "AL. OFF" position on the back of the unit.
- To Turn ON the alarm, slide the lever to the "AL. ON" position on the back of the unit. Once the alarm sounds it will beep for 1 minute until you press the "Snooze" button on the top of the unit.

#### Snooze Function

- Once the desired alarm time is set, switch the alarm button on the back of the unit to "SNOOZE" position.
- When the alarm sounds, by touching the top of the unit the alarm will stop and start again every 4 minutes for over an hour. "Zz" will flash on the LCD screen.

#### Turning the Snooze Function OFF

- To shut the Snooze off, slide the Alarm button on the back of the unit to "AL. OFF"

- Browse the photo that is to be downloaded.



- Click to clear default selection area.
- Select any portion of the photo by click and drag with the mouse.
- Click "Post" to add selected photo to the right panel.
- Click to download all photos in the right panel to the photo frame.
- Download is completed when "download images/programs OK" is display.
- Unplug the USB cable to resume normal function.

### Replacing old battery for the clock

- The clock operates on one G13 battery.
- Slide off battery cover. Remove the old battery and insert a new G13 battery into the empty compartment with positive polarity face upward.

**Important :** Be sure that the battery is installed correctly. Wrong polarity may damage the unit.

### Note:

- When inserting battery, ensure '+' and '-' terminals are correctly aligned.
- Exhausted battery is to be removed from the unit.
- Installation of the battery should be done by an adult.
- This supply terminal is not to be short-circuited.

2

7

PF141 LINGO Inst Manual Size: 8.5cm x 12.6cm

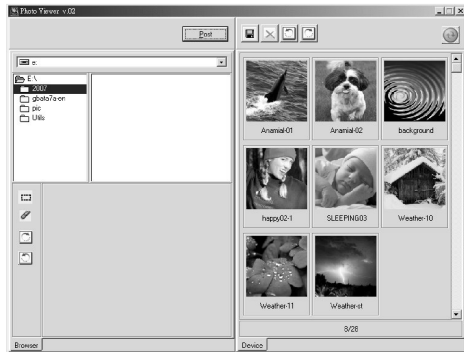
## Running the PC Program

### Installation

- Insert the CD to the CD drive. Installation software will start automatically.
- If your CD does not have autorun, go to the setup directory and double click Setup.exe to start.
- The setup program will guide you through the installation procedure.
- Shortcut will be created on Desktop and Start Menu.

### Uninstall

- You can uninstall the program by clicking on the "Uninstall Photo Viewer" shortcut.

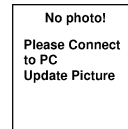


6

## Using the Photo Viewer

### Turn ON/OFF the viewer:

- To turn ON, press the button "**ON**" and hold 1 second.
- Slide show starts when the viewer is on.
- When no photo is stored inside the device, "No photo!" will display.



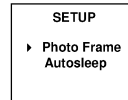
- No need to turn OFF, it will turn off automatic base on user setting.

### Change to next picture:

- Press button "**Down**" one time to switch to the next picture.

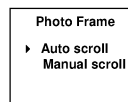
### Setup

- In Setup, user can set the Photo scrolling mode and Autosleep time.



- Press "**ON**" once to enter Setup.
- Press "**Down**" key to select
- Press and hold "**ON**" for 2 seconds to process setup
- Press "**ON**" once to exit

### Photo Frame setup



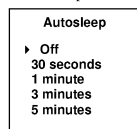
- Press **Up/Down** key to select between auto scroll and manual scroll
- Press and hold **Menu** for 2 seconds to confirm.

3

## PF141 LINGO Inst Manual Size: 8.5cm x 12.6cm

### Autosleep

- If you do not press any button for a while, the unit will enter a sleep mode and the LCD will turn off, in order to save power.
- When the unit is in auto-sleep mode, press and hold "**ON**" key for 1 second to wake up.



- Press "**Down**" key to select OFF, 30 second, 1 minute, 3 minute, 5 minutes.
- System default is 1 minute.
- Press and hold "**ON**" key for 2 seconds to confirm.

Note: Turning off the auto sleep mode is not recommended as this will cause the batteries to drain after a few hours.

### Charging the Unit:

- Charge the **unit** by connecting the USB cable to your PC.
- When the unit is low on battery life, the display will dim and blink before it turns off.
- After a full charge, the battery life will be approximately 2 hours.

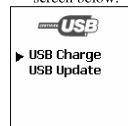
### WARNING:

1. **DON'T DIRECTLY READ/WRITE TO THE PHOTO VIEWER USING OTHER PROGRAMS. ONLY USE THE PC PROGRAM SUPPLIED WITH YOUR UNIT TO DOWNLOAD PICTURE TO THE PHOTO VIEWER.**
2. **DO NOT FORMAT THE PHOTO VIEWER OR THE UNIT WILL BE DAMAGED.**

4

### USB mode

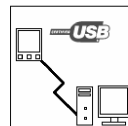
- Once you plug in the USB cable, the unit will enter the USB mode and display the screen below.



- Press "**Down**" key to select USB charge or USB Update
- Press "**ON**" and hold 2 seconds to confirm

### USB Update

- If USB update is selected, the unit will show the following.



- Open the PC software to add / delete the photos in the memory
- If no photo is store in the memory, the right panel will be blank.

5