

Instruction Manual for Digital Photo Frame

Minimum System Requirements:

Hardware:

PC with Intel Pentium 4
128 MB RAM
50 MB Hard Drive Space
CD-ROM Drive

Software:

Microsoft Windows XP with internet connection
Digital Photo Frame – PC Link (Auto-run)

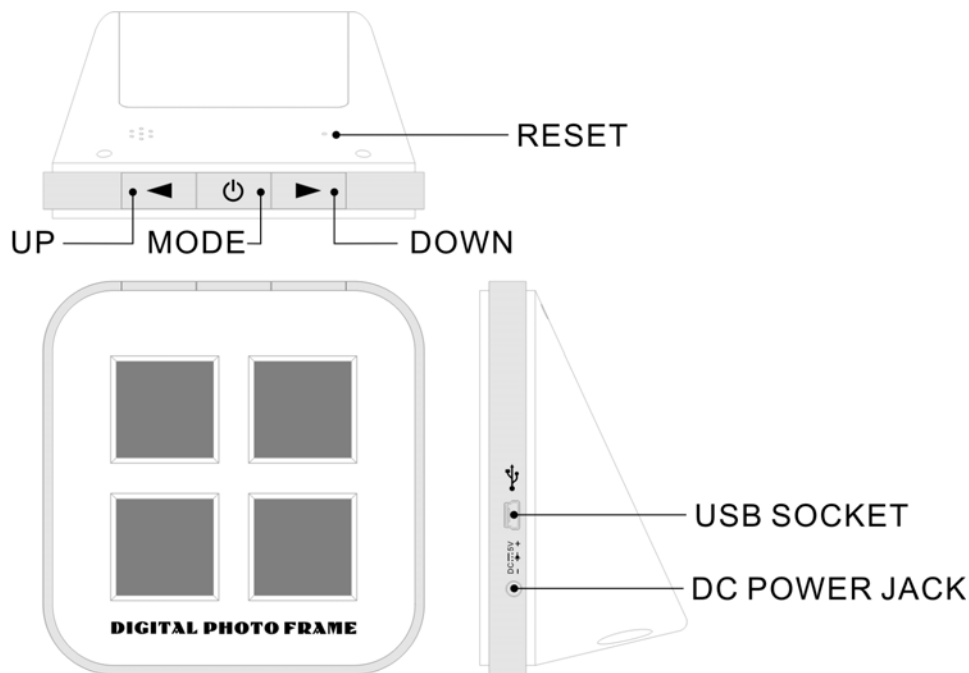
IMPORTANT INFORMATION

DO NOT CONNECT YOUR DIGIT PHOTO FRAME TO YOUR COMPUTER UNLESS YOU HAVE READ THOROUGH THIS INSTRUCTION MANUAL. FAIL TO DO SO MAY RESULT IN PRODUCT DAMAGE.

IMAGES FILES IN THIS DEVICE CANNOT BE BROWSED OR VIEWED BY PROGRAMS OTHER THAN THE ONE PROVIDED.

Main Features:

- Digital Photo Frame
- Clock with calendar
- Daily Alarm
- Auto power off
- 1.5V AA battery x 4

Keypad Layout

Key Name	Press Once	Press and hold for 2 second
UP	Go to previous picture	Go to Set Alarm mode
DOWN	Go to next picture	Auto slide mode, ON/OFF
MODE	Go to Time mode	Power ON or OFF

Using the Photo Frame for the First time

Remove the battery door from the back of the unit and insert new AA batteries into the battery compartment. LCD is turned on.

Power ON

To turn on the device when it is power off, press and hold MODE key. Press and hold MODE to turn off the unit again.

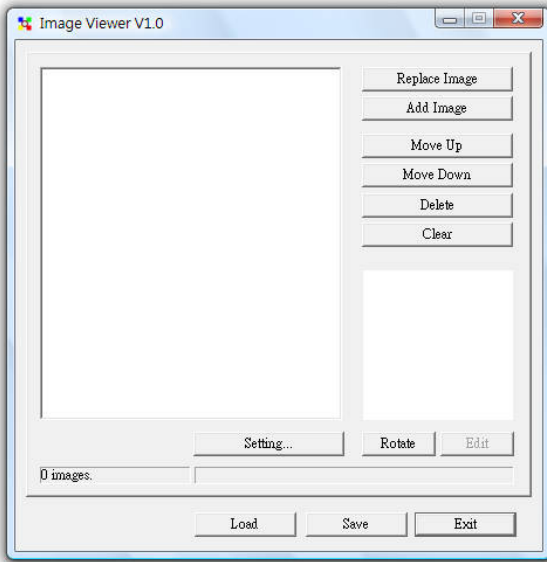
Download Photo

Once the USB cable is plugged, it will enter USB mode and show “Connecting....” on the screen.

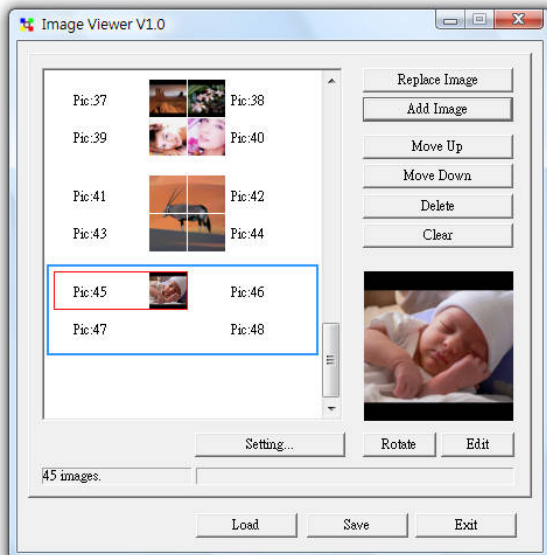
Note:

Some PC's do not have sufficient power output from their USB port, therefore batteries must be installed in the photo frame when download photo.

PC Auto-run program will start automatically as below:

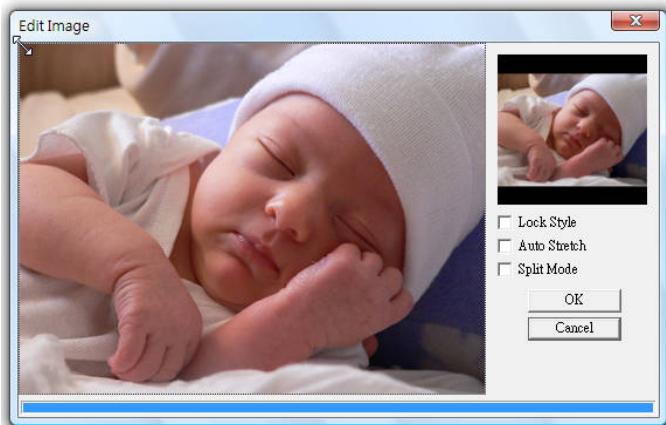


Click “Add Image” to select photo.
Selected photo will be display on the left panel.



Click “Edit” to change setting for the selected photo.

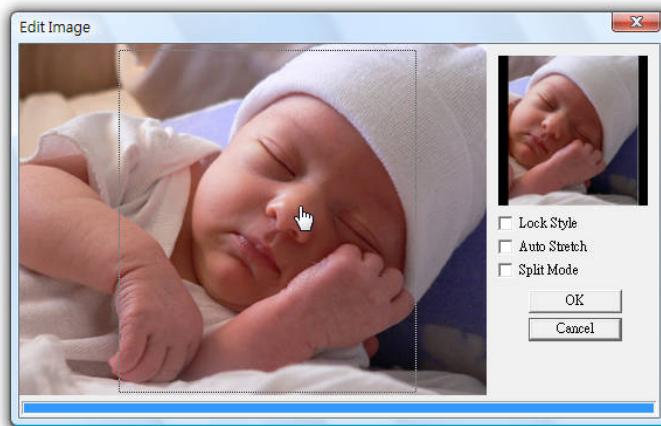
To select a portion of the photo to display, move the cursor to the edges of photo and it will change to a double end arrow.



Click and drag to change the selection size.



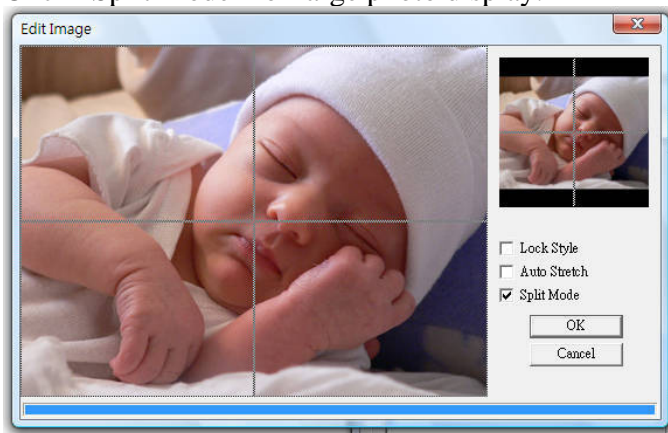
Move to cursor inside the selection, click and drag it to desired location.



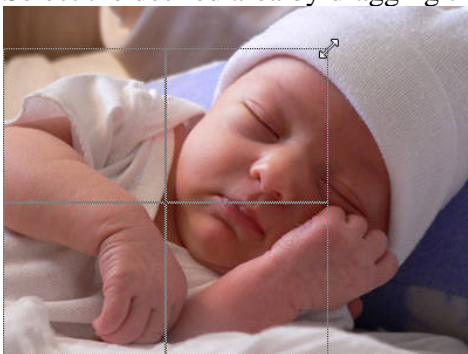
Same photo can be display on the screen but need to add 4 times manually.



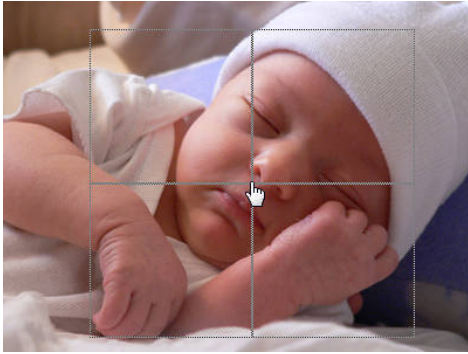
Click “Split Mode” for large photo display.



Select the desired area by dragging the selection frame.



Click on the centre of the selection frame to move it.



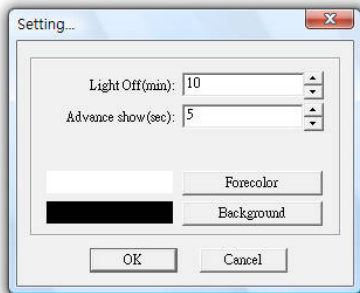
Click “OK” when finished.

Click “Save” to download all selected photo to the photo frame.

WARNING !

Never disconnect the USB cable when downloading photo to the photo frame. Wait until the process is finish. Otherwise the photo frame may be damaged.

Auto power off time and photo slide speed can be set by clicking “Setting”.



Set value to 0 will disable auto power off and auto scrolling of photo.

Disconnect the USB cable and the download photo can be view on the photo frame.

Time and date will synchronize with the PC clock automatically.

Time and Date Setting

No need to manually set time, just connect the photo frame to PC and it will automatically update the time and date.

Alarm

Press and hold UP key to enter Set Alarm mode.

Press UP or DOWN to change the hour digit.

Press MODE to confirm and continue with minute digit.

Press UP or DOWN to change the minute digit.

Press MODE to confirm and continue.

Press UP or DOWN to turn alarm on or off.

Press MODE to confirm and return to photo mode.

When Alarm in enabled and alarm time reach, Alarm tone will come out for 1 minute.

(Beep...Beep...Beep....) 🚫 icon will be flashing

Press any key to stop the alarm tone. 🚫 stop flash.

BATTERY REPLACEMENT

This device operates on four AA batteries.

Be sure to read the following precautions before replacing batteries.

- 1) Turn off the unit before replacing batteries.
- 2) Remove the battery cover. Remove the old batteries and insert new batteries into the empty compartment with correct polarity.

Important: Be sure that the batteries are installed correctly. Wrong polarity may damage the unit.

- 3) To prolong service time, we recommend the use of good quality batteries.
- 4) To avoid damage caused by battery leakage, replace battery every year regardless of how long of the unit has been operated.
- 5) Remove the batteries if the unit is not to be used for a long period of time.
- 6) Button Cell Battery can cause choking hazard if swallowed by children. Keep out of the reach of children.
- 7) Take care to fit the batteries correctly observing the positive (+) side of each battery is facing in the correct directions.
- 8) Never leave dead battery in the battery compartment.
- 9) Batteries should be replaced by an adult.
- 10) This supply terminal is not to be short-circuited.
- 11) Incorrectly using batteries can cause them to burst or leak, possibly damaging the interior of the unit.
- 12) Do not expose battery to direct heat, let them become shorted, or try to take them apart.
- 13) Only batteries of the same or equivalent type are to be used. Do not mix alkaline, standard (zinc carbon), or re-chargeable (nickel cadmium) batteries.
- 14) Replace whole set of batteries at one time, do not mix old and new batteries.
- 15) Make sure battery compartment is secure.
- 16) Never try to recharge the battery that comes with the unit.
- 17) Should a battery leak, clean out the battery compartment of the unit immediately, taking care to avoid letting battery fluid come into direct contact with your skin.

Keep batteries out of reach of small children. If swallowed, consult with physician immediately.

RESET THE UNIT

Reset the unit if it fails to respond.

Insert the pointed end of a paper clip into the small round hole located directly below the word

RESET on the rear cabinet. Push gently.

In Case of difficulty

- Check the battery to ensure that it is fresh and properly installed.
 - This product may need manual reset under a strong electrostatic discharge environment.
- Just follow the instruction described in this manual to set the function again for normal operation.

CARE AND MAINTENANCE

- 1) Clean the unit with a soft damp cloth. Then wipe completely dry. Never clean with cleaning agent.
- 2) Do not drop your device or subject it to strong impacts.
- 3) Protect your device from rain and extreme temperatures
- 4) To avoid damage caused by leakage of the battery fluid, replace batteries once every year regardless of how much the unit has been used during that time.

FCC WARNING

This device complies with Part 15 of the FCC Rules. Operation is subject to the following two conditions:

- (1) this device may not cause harmful interference, and
- (2) this device must accept any interference received, including interference that may cause undesired operation.

NOTE: This equipment has been tested and found to comply with the limits for a Class B digital device, pursuant to part 15 of the FCC Rules. These limits are designed to provide reasonable protection against harmful interference in a residential installation. This equipment generates, uses and can radiate radio frequency energy and, if not installed and used in accordance with the instructions, may cause harmful interference to radio communications. However, there is no guarantee that interference will not occur in a particular installation. If this equipment does cause harmful interference to radio or television reception, which can be determined by turning the equipment off and on, the user is encouraged to try to correct the interference by one or more of the following measures:

- Reorient or relocate the receiving antenna.
- Increase the separation between the equipment and receiver.
- Connect the equipment into an outlet on a circuit different from that to which the receiver is connected.
- Consult the dealer or an experienced radio/TV technician for help.

NOTE: The manufacturer is not responsible for and radio or TV interference caused by unauthorized modifications to this equipment. Such modifications could void the user's authority to operate the equipment.