

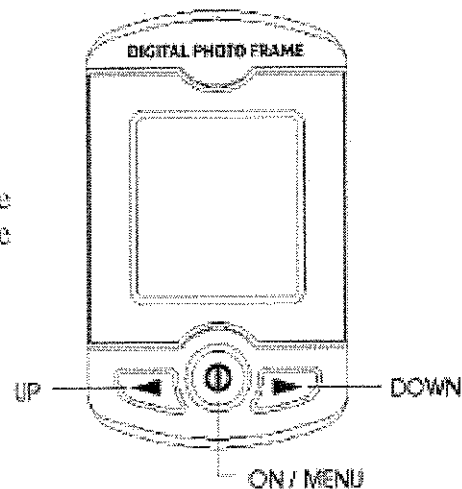
Digit Photo Frame

1 Main Features:

- Digital Photo Frame
- Home Time
- Calendar
- Daily Alarm
- Auto power off
- 3V- G13X4 battery
- Display resolution 128 x 128
- Store 60 images

2 Keypad Layout

Menu: Change mode
Confirm key function
DOWN: Change time/date in setting mode
Up: Change time/date in setting mode



2.1 Using the Photo Frame for the First time

Remove the insulation tabs from the back of the unit. LCD is turned on and then it will enter Clock mode. Default date is 2007 Jan 1, 12:00 AM

2.2 POWER ON

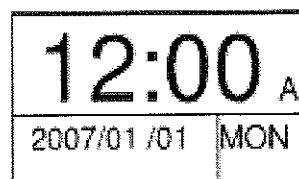
To turn on the device when it is power off, press and hold **On/Menu** key for 1 second


2.3 MODE

There will be 4 mode: Clock, Alarm, Photo frame, Setup
Press **Menu** key to switch between each mode

Clock -> Alarm -> Photo frame -> Setup

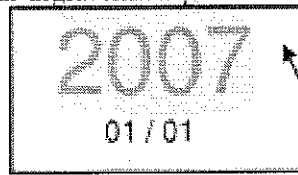
2.4 CLOCK



- Time, date and week will be shown on clock mode
- In case if the Alarm is turned on, a  icon is appeared on the top right corner.

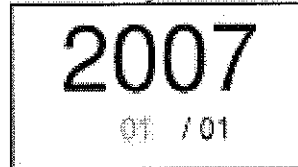
2.4.1 SETTING DATE & TIME

- In CLOCK mode, Press and hold the **Menu** key for 2 seconds to edit
- Year digits flashing.

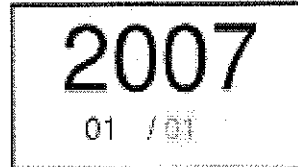


Red color means flashing

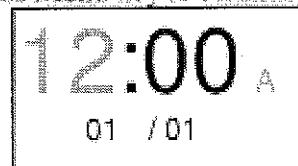
- Press **Up/Down** key to select year (2000~2099)
- Press **Menu** key to confirm year. Then start set month



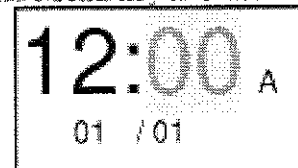
- Press **Up/Down** key to select Month.
- Press **Menu** key to confirm month. Then start set day



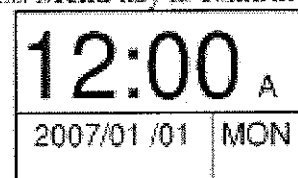
- Press **Up/Down** key to select day.
- Press **Menu** key to confirm day. Then start set hour



- Press **Up/Down** key to select hour.
- Press **Menu** key to confirm hour. Then start set minute



- Press **Up/Down** key to select minute.
- Press **Menu** key to confirm minute. Then go back to clock mode.



2.5 ALARM

- In CLOCK mode, Press **Menu** key one time to enter ALARM mode.



2.5.1 SETTING ALARM

- Press and hold **Menu** key for 2 seconds to edit the alarm time.



- Hour digits will flash together with the AM/PM mark.
- Press **Up/Down** key to select hour.
- Press **Menu** key to confirm hour. Then start set minute



- Minute digits will flash.
- Press **Up/Down** key to select minute.
- Press **Menu** key to confirm and back to Alarm mode.

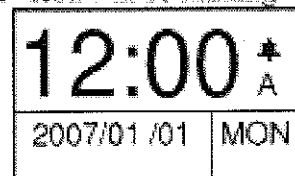


2.5.2 ENABLE/DISABLE ALARM

- Press **Up** key immediately after alarm time setting to turn on Alarm. * icon will be shown on the top right corner to represent the Alarm function is turned on
- Press **Down** key to turn off Alarm * icon will be turned off

2.5.3 ALARM TONE

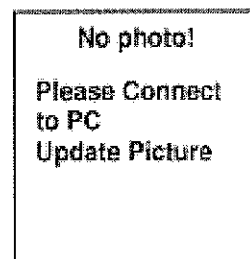
- When Alarm is enabled and alarm time reaches, Alarm tone will come out for 1 minute. (Beep...Beep...Beep....)
- * icon will be flashing



- Press any key to stop the alarm tone. * stop flash

2.6 DIGITAL PHOTO ALBUM

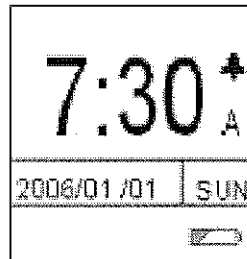
- In Alarm mode, press **Menu** key one time to Digital Photo album.
- When no photo is stored inside the device, "No photo!" will display.



- If auto scroll is selected, then each photo will display for 10 seconds and then change to another photo.
- If manual scroll is selected, press **Up/Down** to view another photo.

2.7 LOW BATTERY DETECT

- If the battery is low, the screen will shown a low battery icon at the right bottom corner



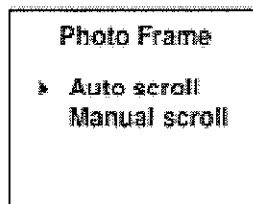
2.8 SETUP

In Setup, user can set the Photo scrolling mode and Autosleep time.



- Press **Up/Down** key to select
- Press and hold **Menu** for 2 seconds to process setup
- Press **Menu** once to exit

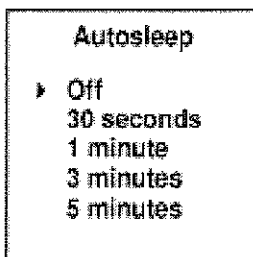
2.8.1 PHOTO FRAME SETUP



- Press **Up/Down** key to select between auto scroll and manual scroll
- Press and hold **Menu** for 2 seconds to confirm.

2.8.2 AUTOSLEEP

- If there is no any buttons pressed for a certain time, the unit will enter sleep mode – LCD turned off to save power.
- When the unit is in auto-sleep mode, press and hold **Menu** key for 1 second to wake up.
- The unit will resume Clock Mode after wake up.



- Press **Up/Down** key to select OFF, 30 second, 1 minute, 3 minute, 5 minutes.
- System default is 1 minute.
- Press and hold **Menu** key for 2 seconds to confirm.

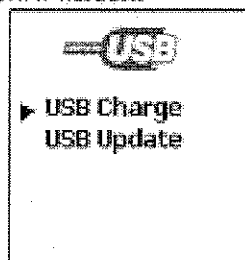
Note: Turn off autosleep is not recommended because batteries will dry out after a few hours of continuous operation.

WARNING:

1. **DON'T DIRECTLY READ/WRITE TO THE USB DEVICE USING OTHER PROGRAM. ONLY USE THE PC PROGRAM PROVIDED TO DOWNLOAD PICTURE TO THE PHOTO FRAME.**
2. **DON'T FORMAT THE USB DRIVE; OTHERWISE THE UNIT WILL BE DAMAGE!!!**

2.9 USB MODE

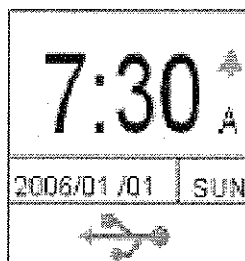
- Once the USB cable is plugged, it will enter USB mode and show the below screen.



- Press **Up/Down** key to select USB charge or USB Update
- Press **Menu** and hold 2 seconds to confirm

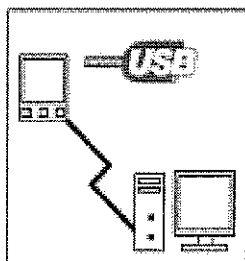
2.9.1 USB CHARGE

- If USB Charge is selected, the unit will use the USB power as the unit power supply.
- The unit then return to clock mode and show a icon at the bottom.



2.9.2 USB UPDATE

- If USB update is selected, the unit will show the following.

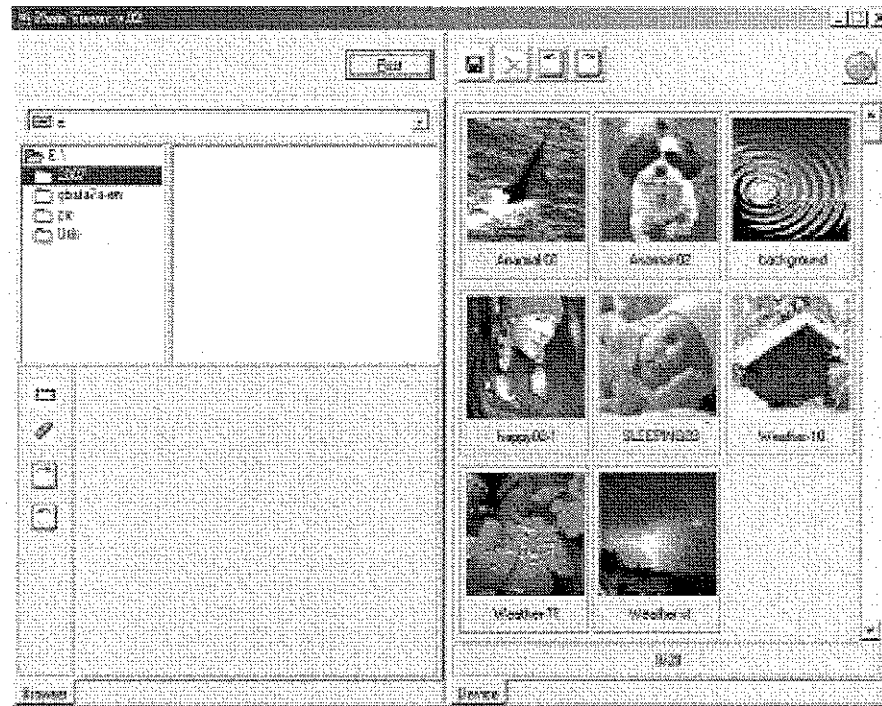


- Open the PC software to add / delete the photos in the memory
- If no photo is store in the memory, the right panel will be blank.

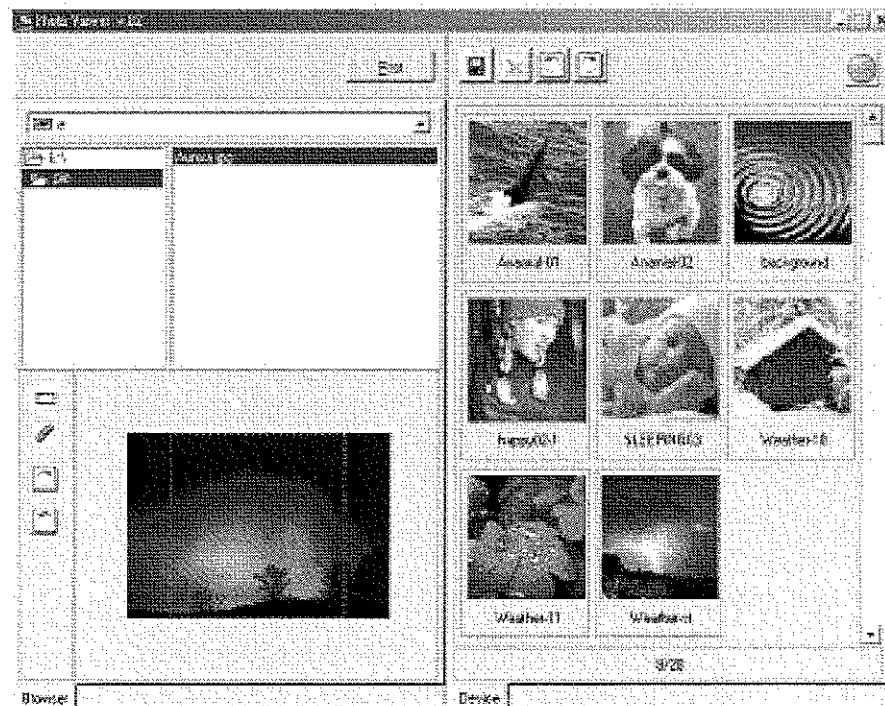
3 Running the PC Program


- The PC program does not require installation, just copy all files from the CD to any directory your computer.
- Double click on the "PhotoView.exe" file to run it from the hard disk.

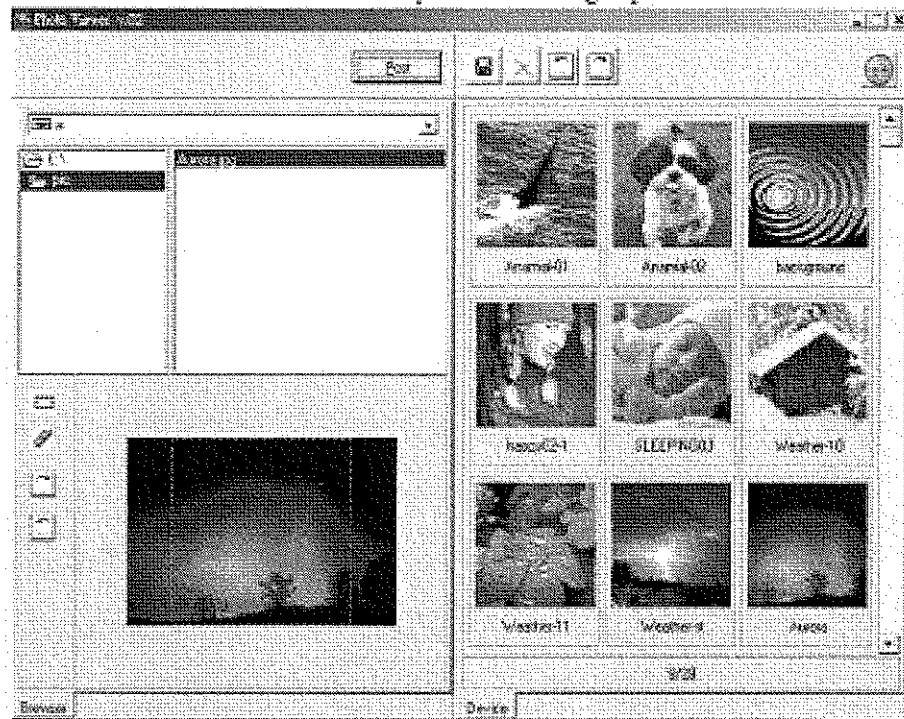
Note: Don't run the PC program directly on the CD because temporary can't be generated.




- Browse the photos that are to be downloaded using the drop down box. Select the drive/folder where the photo is located.



- Click  to clear default selection area.
- Select any portion of the photo by click and drag with the mouse.
- Click "Post" to add selected photo to the right panel.



- Click  to download all photos in the right panel to the photo frame.
- Download is completed when "download images/programs OK" is display.
- Unplug the USB cable to resume normal function.

4 REPLACING OLD BATTERIES

This databank operates on four G13 batteries.

Be sure to read the following precautions before replacing batteries.

- 1) Wait until the unit is off automatically before replacing batteries
- 2) Unscrew the battery cover screw. Remove the old batteries and insert new G13 batteries into the empty compartment with positive polarity face upward.

Important : Be sure that the batteries are installed correctly. Wrong polarity may damage the unit.

- 3) For better performance and longer operating time, we recommend the use of good quality batteries.
- 4) To avoid damage caused by leakage of the battery fluid, replace battery once every year regardless of how much the unit has been used during that time.

Note:

- When inserting battery, ensure '+' and '-' terminals are correctly aligned.
- Exhausted battery is to be removed from the unit.
- Installation of the battery should be done by an adult.
- This supply terminal is not to be short-circuited.

Battery Precautions

Incorrectly using batteries can cause them to burst or leak, possibly damaging the interior of the unit. Note the following precautions.

- Batteries should be replaced by adult.
- Take care to fit the batteries correctly observing the positive (+) side of each battery is facing in the correct directions.
- Do not expose battery to direct heat, let them become shorted, or try to take them apart.
- Only batteries of the same or equivalent type are to be used. Do not mix alkaline, standard (zinc carbon), or re-chargeable (nickel cadmium) batteries.
- Replace whole set of batteries at one time, do not mix old and new batteries.
- Never leave dead battery in the battery compartment.
- Make sure battery compartment is secure.
- To avoid damage caused by leakage of the battery fluid, replace battery once every two years regardless of how much the unit has been used during that time.
- Never try to recharge the battery that comes with the unit.
- Should a battery leak, clean out the battery compartment of the unit immediately, taking care to avoid letting battery fluid come into direct contact with your skin.

Keep batteries out of reach of small children. If swallowed, consult with physician immediately.

5 RESET THE UNIT

- Reset the unit if it fails to respond.
- Insert the pointed end of a paper clip into the small round hole located directly below the word **RESET** on the rear cabinet. Push gently.
- This product may need reset by manual under a high Electro-static environment.

In Case of difficulty

- Check the battery to ensure that it is fresh and properly installed.
- This product may need manual reset under a strong electrostatic discharge environment. Just follow the instruction described in this manual to set the function again for normal operation.

6 CARE AND MAINTENANCE

- 1) Clean the unit with a soft damp cloth. Then wipe completely dry. Never clean with cleaning agent.
- 2) Do not drop your device or subject it to strong impacts.
- 3) Protect your device from rain and extreme temperatures
- 4) To avoid damage caused by leakage of the battery fluid, replace batteries once every two years regardless of how much the unit has been used during that time.



Warning:

Changes or modifications to this unit not expressly approved by the party responsible for compliance could void the user's authority to operate the equipment.

Note:

This equipment has been tested and found to comply with the limits for a Class B digital device, pursuant to Part 15 of the FCC Rules. These limits are designed to provide reasonable protection against harmful interference in a residential installation. This equipment generates, uses and can radiate radio frequency energy and, if not installed and used in accordance with the instructions, may cause harmful interference to radio communications. However, there is no guarantee that interference will not occur in a particular installation. If this equipment does cause harmful interference to radio or television reception, which can be determined by turning the equipment off and on, the user is encouraged to try to correct the interference by one or more of the following measures:

- Reorient or relocate the receiving antenna.
- Increase the separation between the equipment and receiver.
- Connect the equipment into an outlet on a circuit different from that to which the receiver is needed.
- Consult the dealer or an experienced radio/TV technician for help.

Warning: Changes or modifications to this unit not expressly approved by the party responsible for compliance could void the user's authority to operate the equipment.

This device complies with Part 15 of the FCC Rules. Operation is subject to the following two conditions:

- (1) this device may not cause harmful interference, and
- (2) this device must accept any interference received, including interference that may cause undesired operation.