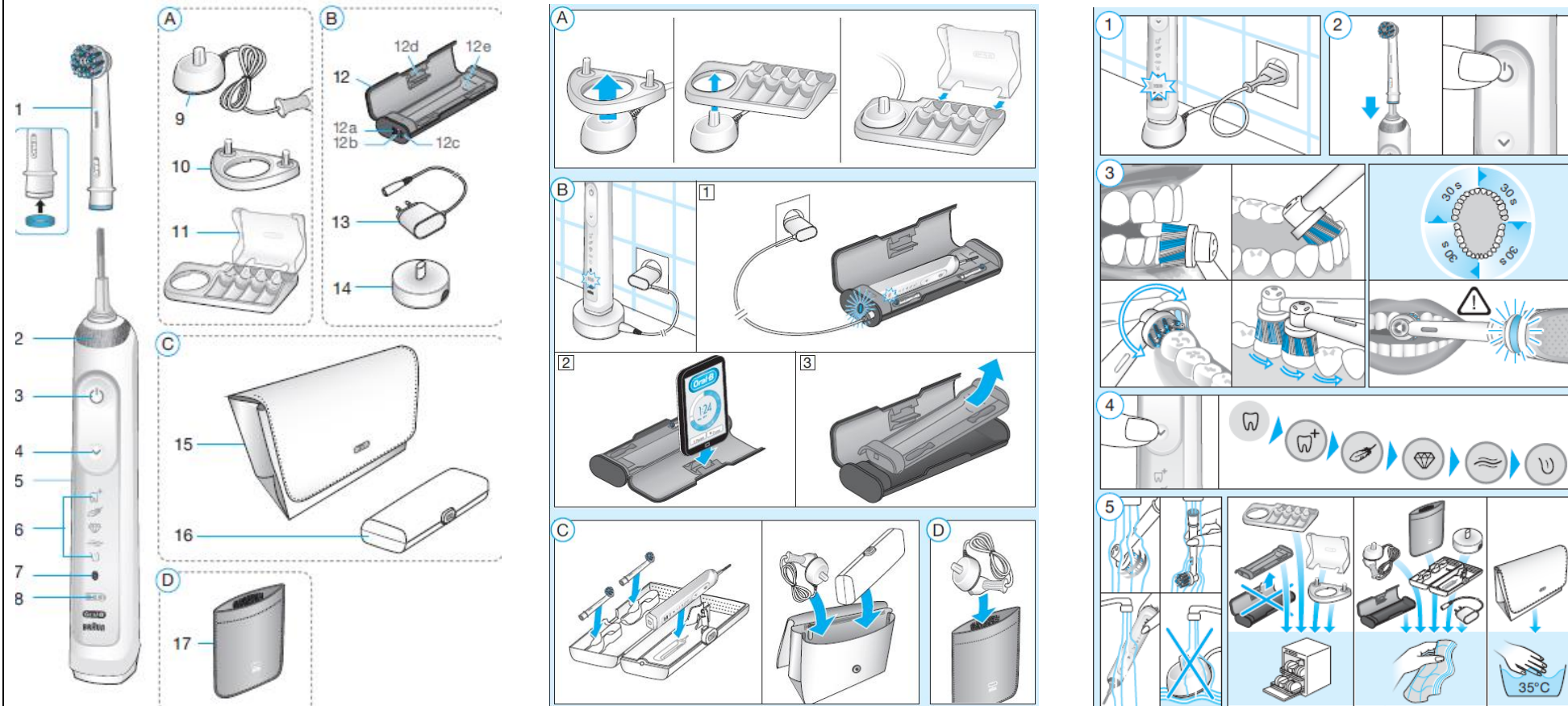


# MC D706 UI – Genesis 2 Use Instructions EMEA region

**SCOPE:** The yellow highlighted text has been changed compared to previous D701 UI in G1. Please give full translations of entire text. In case reference PDF/LCs are required, please contact braumann.d@pg.com

## English Master Copy UI - D706 UI (Genesis 2) – EMEA Region




**USE AS REFERENCE ONLY to understand context -> images may change**

Responsibility	English Master Copy – D706 UI (6-mode; with charging travel case; with Beauty Bag and w/o; with charger pouch and w/o; with MVC and w/o; professional and retail)	Comments	Translations LC <b>WE UK:</b> English (UK), German, French, Dutch, Italian, Spanish, Portuguese, Finish, Swedish, Danish/Norwegian -> POA005

			<p><b>CE IL TR:</b> English (UK), Polish, Lithuanian, Latvian, Estonian, Hungarian, Czech, Slovak, Slovenian, Croatian, Turkish, Hebrew          -&gt; <b>POA006</b></p> <p><b>RoWE CEEMEA:</b> English (ZA), German, French, Dutch, Italian, Spanish, Portuguese, Swedish, Finnish, Norwegian/Danish combo, Greek, Polish, Russian, Ukrainian, <b>Kazakh</b>, Turkish, Polish, Hungarian, Romanian, Serbian, Czech, Slovak, Hebrew, Croatian, Slovenian          -&gt; <b>POA007</b></p> <p><b>TREEBLKAFR:</b> English (ZA), Turkish, Russian, Belarusian, Ukrainian Romanian/Moldovan, Bulgarian, Serbian, Montenegro/Bosnian, Macedonian, Greek, Arabic          -&gt; <b>POA008</b></p>
<b>MC Creator</b>	IPMS#: 91932793 (POA005)	<i>Project Information</i>	<i>n/a</i>
	IPMS#: 91933112 (POA006) IPMS#: 91943703 (POA007) IPMS#: 91940106 (POA008) p-194355		<i>n/a</i>
<b><i>Cover pages information:</i></b>			
<b>R&amp;D</b>	Braun GmbH Frankfurter Straße 145 61476 Kronberg/Germany	<i>LE</i>	<i>n/a</i>
<b>MKT</b>	www.oralb.com	<i>Provide customer service contact information if needed</i>	<i>n/a</i>
<b>MKT</b>	<b>UK</b> – 0 800 731 1792 <b>IE</b> - 1 800 509 448	<i>Provide customer service contact information</i>	
<b>MKT</b>	GENIUS	<i>Use as reference only</i>	<i>n/a</i>
<b>R&amp;D</b>	Basic Charger Type 3757	<i>Type Info</i>	<i>n/a</i>

	<p>Handle Type 3771  Charging Stand Type 3755  Travel Case Type 3760  Smart Plug Type 492-5214</p> <p><b>Note:</b> Content may vary based on the model purchased.</p>		
<b>Copy elements: INTRODUCTION + WARNING STATEMENTS</b>			
<b>GPS</b>	<p>Welcome to Oral-B!</p> <p>Before operating this toothbrush, please read these instructions and save this manual for future reference.</p>		n/a
<b>GPS</b>	<p><b>IMPORTANT</b></p> <ul style="list-style-type: none"> <li>Periodically check the entire product/cords/accessories for damage. A damaged or non-functioning unit should no longer be used. If the product/cords/accessories are damaged, take it to an Oral-B Service Centre. Do not modify or repair the product. This may cause fire, electric shock or injury.</li> <li>Usage by children under age 3 is not recommended. Toothbrushes can be used by children and persons with reduced physical, sensory or mental capabilities or lack of experience and knowledge, if they have been given supervision or instruction concerning use of the appliance in a safe way and understand the hazards involved.</li> <li>Cleaning and maintenance shall not be performed by children.</li> <li>Children shall not play with the appliance.</li> </ul>		n/a
<b>GPS</b>	<ul style="list-style-type: none"> <li>Use this product only for its intended use as described in this manual. Do not use attachments which are not recommended by the manufacturer. Only use the charger provided with your appliance.</li> </ul>		all

GPS	<p><b>WARNING</b></p> <ul style="list-style-type: none"> <li>Do not place the <b>charger/charging stand</b>, smart plug or charging travel case in water or liquid or store where it can fall or be pulled into a tub or sink. Do not reach for it when fallen into water. Unplug immediately.</li> </ul>		<i>all</i>
GPS	<ul style="list-style-type: none"> <li>This appliance contains batteries that are non-replaceable. Do not open and disassemble device. For battery recycling please dispose whole device according to local environmental regulations. Opening the handle will destroy the appliance and invalidate the warranty.</li> </ul>		<i>Kazakh</i>
GPS	<ul style="list-style-type: none"> <li>When unplugging, always <b>pull</b> the power plug instead of the cord. Do not touch the power plug with wet hands. This can cause an electric shock.</li> </ul>		<i>all</i>
GPS	<ul style="list-style-type: none"> <li>If you are undergoing treatment for any oral care condition, consult your dental professional prior to use.</li> <li>This toothbrush is a personal care device and is not intended for use on multiple patients in a dental practice or institution.</li> <li>Only use the charger and/or special cord set (smart plug) with integrated Safety Extra Low Voltage power supply provided with your appliance. Do not exchange or tamper with any part of it, otherwise there is risk of an electric shock.</li> </ul> <p>If charging stand/charging travel case is marked with  492-5214, only use Braun/Oral-B special cord set (smart plug) with this identification.</p> <ul style="list-style-type: none"> <li>Small parts may come off, keep out of reach of children.</li> </ul> <p>To avoid brush head breakage which may generate a small parts choking hazard or damage teeth:</p> <ul style="list-style-type: none"> <li>Prior to each use, ensure the brush head fits well. Discontinue use of the toothbrush, if brush head no longer fit properly. Never use without a brush head.</li> </ul>		<i>Kazakh</i>

	<ul style="list-style-type: none"> <li>• If the toothbrush handle is dropped, the brush head should be replaced before the next use even if no damage is visible</li> <li>• Replace brush head every 3 months or sooner if brush head becomes worn.</li> <li>• Clean brush head properly after each use (see “Cleaning recommendations” paragraph). Proper cleaning ensures the safe use and functional life of the toothbrush.</li> </ul>		
GPS	<p><b>Important Information</b></p> <ul style="list-style-type: none"> <li>• Your Oral-B toothbrush can be used with your smartphone (find details under «Connecting your toothbrush to your Smartphone»).</li> <li>• To avoid electromagnetic interference and/or compatibility conflicts, deactivate <b>Bluetooth</b> on your toothbrush handle (5) before using it in restricted surroundings, such as aircrafts or specially marked areas in hospitals.</li> <li>• Deactivate <b>Bluetooth</b> by simultaneously pressing the on/off (3) and mode button (4) for 2 seconds until the <b>Bluetooth</b> indicator (7) goes off. Follow the same procedure to reactivate <b>Bluetooth</b> again.</li> <li>• Persons with pacemakers should always keep the toothbrush more than six inches (15 centimeters) from the pacemaker while turned on. Anytime you suspect interference is taking place, deactivate <b>Bluetooth</b>.</li> </ul>		<i>all</i>
<b>Copy elements: INTRODUCTION + TECHNICAL DATA</b>			
R&D + MKT	<p><b>Description</b></p> <ol style="list-style-type: none"> <li>1 Brush head</li> <li>2 Smart Ring</li> <li>3 On/off button</li> <li>4 Brushing mode button</li> <li>5 Handle</li> <li>6 Brushing mode display</li> <li>7 <b>Bluetooth</b>® indicator</li> <li>8 Charge level display</li> </ol> <p><b>Accessories (depending on model):</b></p>		<i>all</i>

	<p>9 Basic charger (with fixed cord)  10 Brush head holder  11 Brush head compartment with protective cover  12 Charging travel case  12a Charge indicator light  12b USB port  12c Smart plug port  12d Inner lid (with smartphone holder)  12e Removable inlay  13 Smart plug (power supply)  14 Charging stand (with detachable cable)  15 Beauty bag  16 Basic travel case  17 Charger pouch</p> <p><b>Note:</b> Content may vary based on the model purchased.</p>		
<b>R&amp;D</b>	<p><b>Specifications</b>  For voltage specifications refer to the type plates/bottom of devices.  Noise level: 68 dB (A)</p>		<i>all</i>
<b>R&amp;D + GPS</b>	<p>The rechargeable toothbrush contains a radio module which operates in the 2.4 to 2.48 GHz band with a maximum power of 1mW.</p> <p>Hereby, Braun GmbH declares that the radio equipment types 3771, 3765, 3754, 3764, 3762 and 3767 are in compliance with Directive 2014/53/EU. The full text of the EU declaration of conformity is available at the following internet address: <a href="http://www.oralb.com/ce">www.oralb.com/ce</a>.</p>		<i>all</i>
<b>R&amp;D + GPS</b>	<p>Basic Charger Type 3757  Handle Type 3771  Charging Stand Type 3755  Travel Case Type 3760  Smart Plug Type 492-5214</p>	<i>Reference only - Use if needed in local language</i>	<i>n/a</i>

**Copy elements: INSTRUCTIONS**

R&D + MKT	<p><b><u>Charging and Operating</u></b></p> <p>Your toothbrush has a waterproof handle, is electrically safe and designed for use in the bathroom.</p> <ul style="list-style-type: none"> <li>You may use your toothbrush right away or charge it briefly by placing it on the plugged-in basic charger (9) or charging stand (14). When using the charging stand (14) use the extra smart plug (13) provided (picture B). Only the smart plug may be used for all global mains voltage ranges (100 -240V).</li> </ul> <p>Note: In case the battery is empty (no lights illuminated on charge level display (8) while charging or no reaction when pressing the on/off button (3)), charge at least for 30 minutes.</p> <ul style="list-style-type: none"> <li>The charge level is indicated on the charge level display (8). Flashing lights indicate that the battery is charging (picture ①/B); once is fully charged, the lights turn off. A full charge typically takes 12 hours and enables at least 2 weeks of regular brushing (twice a day, 2 minutes).</li> </ul> <p>Note: At a very low charge level, the lights might not flash immediately; it can take up to 30 minutes.</p> <ul style="list-style-type: none"> <li>If the battery is running low, a red light is flashing on the charge level display and the motor is reducing its speed. Once the battery is empty, the motor will stop; it will need at least a 30-minute charge for one usage.</li> <li>You can always store the handle on the plugged-in charging unit to maintain it at full power; a battery overcharge is prevented by device.</li> </ul> <p>Note: Store handle at room temperature for optimal battery maintenance.</p> <p><b>Caution:</b> Do not expose handle to temperatures higher than 50 °C.</p>		<i>all</i>
R&D + MKT	<p><b><u>Using your toothbrush</u></b></p> <p><b><u>Brushing technique</u></b></p> <p>Wet brush head and apply any kind of toothpaste. To avoid splashing, guide the brush head to your teeth before switching on the handle (picture ②). When brushing your teeth with one of the Oral-B <b>oscillating-rotating brush heads</b> guide the brush</p>		n/a

	<p>head slowly from tooth to tooth, spending a few seconds on each tooth surface.</p> <p>With any brush head start brushing the outsides, then the insides and finally the chewing surfaces. Brush all four quadrants of your mouth equally (picture ③). You may also consult your dentist or dental hygienist about the right technique for you.</p> <p>In the first days of using any electric toothbrush, your gums may bleed slightly. In general, bleeding should stop after a few days. Should it persist after 2 weeks, please consult your dentist or dental hygienist. If you have sensitive teeth and/or gums, Oral-B recommends using the «Sensitive» mode (optional in combination with an Oral-B «Sensitive» brush head).</p>	Removed TriZone part	
R&D + MKT	<p><b>Smart Ring features</b></p> <p>Your toothbrush is equipped with a Smart Ring (2) that has various functionalities indicated via different colors of light:  White (default) = Operating and visual timer light (choose individual color via Oral-B™ App settings)  Red = Pressure sensor light  Blue = Bluetooth® pairing indicator</p>		all
R&D + MKT	<p><b>Timer</b></p> <p>The timer signals with a short stuttering sound and a flashing light of the Smart Ring at 30-seconds intervals to move to the next quadrant of your mouth (picture ③). A long stuttering sound and a flashing light indicate the end of the professionally recommended 2-minute brushing time.</p> <p>The timer memorizes the elapsed brushing time, even when the handle is briefly switched off during brushing. The timer resets if pausing longer than 30 seconds, briefly pressing the mode button (4) during pause or placing the handle on the plugged-in charger.  Note: During the use of the Oral-B™ App, the timer may be deactivated for some features.  Note: You can also customize the timer settings via Oral-B™ App.</p>		all
R&D + MKT	<p><b>Pressure sensor</b></p> <p>If too much pressure is applied, the Smart Ring (2) will light up in red, reminding you to reduce pressure. Constant high pressure</p>		all




	<p>for more than 5 seconds is indicated with a fast flashing Smart Ring (2).</p> <p>In addition, the pulsation of the brush head will stop and the oscillation movement of the brush head will be reduced (during «Daily Clean», «Pro Clean» and «Sensitive» mode) (picture ③).</p> <p>Periodically check the operation of the pressure sensor by pressing moderately on the brush head during use.</p> <p>Note: During the use of the Oral-B™ App, the pressure sensor may be deactivated for some features.</p>		
<p>R&amp;D + MKT</p>	<p><b>Brushing modes</b></p> <p>Your toothbrush offers different brushing modes indicated on the brushing mode display (6) on your handle («Daily Clean» mode does not illuminate on the brushing mode display):</p> <ul style="list-style-type: none"> <li>«Daily Clean» – Standard mode for daily cleaning</li> <li>«Pro Clean» – For an extraordinary clean feeling (operated with a higher frequency)</li> <li>«Sensitive» – Gentle, yet thorough cleaning for sensitive areas</li> <li>«3D White» – Polishing for occasional or everyday use</li> <li>«Gum Care» – Gentle massage of gums</li> <li>«Tongue Clean» – Tongue cleaning for occasional or everyday use</li> </ul> <p>When operating the «Tongue Clean» mode, we recommend using the «Sensitive» brush head. You can brush your tongue either with or without toothpaste. Brush the whole area of your tongue systematically in gentle movements. The recommended brushing time is 20 seconds; indicated with a flashing light of the Smart Ring.</p> <p>Your toothbrush automatically starts in the mode selected last. To switch to other modes, successively press the mode button during use (picture ④). To return from any mode back to «Daily Clean» mode, press and hold the mode button (4).</p> <p>Note: You can also customize the mode settings via Oral-B™ App.</p>		<p><i>all</i></p>

<p><b>R&amp;D</b> <b>+</b> <b>MKT</b></p>	<p><b>Brush heads</b> Oral-B offers you a variety of different Oral-B brush heads that fit your Oral-B toothbrush handle.</p> <p>Our <b>oscillating-rotating brush heads</b> can be used for tooth-by-tooth precision cleaning.</p> <p><u>Oral-B CrossAction brush head</u> Our most advanced brush head. Angled bristles for a precise clean. Lifts and powers away plaque.</p> <p><u>Oral-B FlossAction brush head</u> features micropulse bristles that allow for an outstanding plaque removal in the interdental areas.</p> <p><u>Oral-B 3D White brush head</u> features a special polishing cup to naturally whiten your teeth. Please note that children under 12 years old should not use the Oral-B «3D White» brush head.</p> <p><u>Oral-B Sensi Ultrathin brush head</u> features a combination of regular bristles to clean teeth surfaces and ultrathin bristles for a gentle brushing experience on the gumline.</p>		<p><i>Kazakh</i></p>
<p><b>R&amp;D</b> <b>+</b> <b>MKT</b></p>	<p>Most Oral-B brush heads feature light blue INDICATOR® bristles to help you monitor brush head replacement need. With thorough brushing, twice a day for two minutes, the blue color will fade halfway approximately within 3 months, indicating the need to exchange your brush head. If the bristles splay before the color recedes, you may exert too much pressure on teeth and gums.</p> <p>We do not recommend using the Oral-B «FlossAction» or Oral-B «3D White» brush head with braces. You may use the Oral-B «Ortho» brush head, specifically designed to clean around braces and wires.</p>		<p><i>Kazakh</i></p>

<p><b>R&amp;D</b> + <b>MKT</b></p>	<p><b>Connecting your toothbrush to your Smartphone</b></p> <p>The Oral-B™ App is available for smartphones running iOS or Android operating systems. It can be downloaded for free from App Store<sup>(SM)</sup> or Google Play™.</p> <p>Your handle has sensors installed that, together with a «brushing recognition» feature in the App, help you to detect what areas to brush and for how long.</p> <p>Furthermore, the Oral-B™ App gives you the opportunity to chart your brushing activities, give you coaching and customize your toothbrush settings.</p> <ul style="list-style-type: none"> <li>• Launch the Oral-B™ App. It will guide you through the entire Bluetooth pairing procedure. You may also find it under the App's settings (Settings -&gt; Toothbrush).</li> </ul> <p>Note: Oral-B™ App functionality is limited if Bluetooth is deactivated on your smartphone (for directions please refer to your smartphone's user manual).</p> <ul style="list-style-type: none"> <li>• Any App instructions will be displayed on your smartphone.</li> <li>• If Bluetooth is activated on your handle, the Bluetooth indicator (7) illuminates. Once the handle is paired with the App, the Smart Ring (2) flashes briefly.</li> <li>• Keep your smartphone in close proximity (within 5m distance) when using it with the handle. Make sure the smartphone is safely positioned in a dry place.</li> </ul> <p>Note: Your smartphone must support Bluetooth 4.0 (or higher)/Bluetooth Smart in order to pair your handle. Compatible smartphones are listed in App Store<sup>(SM)</sup> or Google Play™.</p> <p>Caution: Follow your smartphone's user manual to ensure your phone/charger is designed for use in a bathroom environment.</p>		<p><i>all</i></p>
<p><b>R&amp;D</b> + <b>MKT</b></p>	<p><b>Cleaning recommendations</b></p> <p>After brushing, rinse your brush head under running water with the handle switched on. Switch off and remove the brush head. Clean handle and brush head separately; wipe them dry before</p>		<p><i>all</i></p>

	<p>reassembling. Unplug the basic charger/charging stand before cleaning (picture ⑤).</p> <p>To be cleaned with a damp cloth only: basic charger (9), charging stand (14), charger pouch (17), charging travel case (12), basic travel case (16) and smart plug (13).</p> <p>Dishwasher-safe: brush head holder (10), brush head compartment and protective cover (11), removable inlay (12e) of the charging travel case (picture B3).</p> <p>Hand wash: beauty bag (15) only with lukewarm water (30°C – 40°C).</p>		
<p><b>R&amp;D</b> <b>+</b> <b>MKT</b></p>	<p><b><u>Accessories (depending on model)</u></b></p> <p><b>Charging Travel Case</b></p> <ul style="list-style-type: none"> <li>• To charge your handle (5) place it on the pin in the charging travel case (12) and connect it to an electric outlet, using the extra smart plug (13) provided. The smart plug may be used for all global mains voltage ranges (100 -240V).</li> <li>• The flashing light (12a) of the charging travel case indicates that the handle is charging. Once the handle is fully charged the light turns off. A full charge typically takes 12 hours (picture B1). Note: You may use the USB port (12b) to charge an electric device while the charging travel case is plugged in. The handle can only be charged with the smart plug (13) (12c) not via USB port.</li> <li>• The inner lid of the travel case has a built-in smartphone holder (12d), which can hold your smartphone while using (picture B2). Before use, make sure your phone fits the stand and keeps stable.</li> <li>• <b>Cleaning:</b> The removable inlay (picture B3) (12e) of the travel case is dishwasher-safe (picture ⑤). The outer case should be cleaned with a damp cloth only. Make sure that travel case parts are completely dry before reassembling and toothbrush/brush heads are dry before storing in the travel case. Note: Clean stains on travel case surface immediately. Store travel case in a clean and dry place.</li> </ul>		<p><i>all</i></p>

	Follow your smartphone's user manual to ensure your phone/charger is designed for use in a bathroom environment.		
R&D + MKT	<p><b>Beauty Bag / Charger Pouch / Basic Travel Case</b></p> <p>Store the clean and dry toothbrush/brush heads in the basic travel case (16) and place it inside the beauty bag (15) (picture C). Store the charger/charging stand in the charger pouch (17) (picture D).</p> <p><b>Cleaning:</b> Clean stains on surfaces immediately. The beauty bag should be hand washed only with lukewarm water (30°C – 40°C). Basic travel case and charger pouch should be cleaned with a damp cloth only (picture 5). Store in clean and dry place.</p>		all
R&D	Subject to change without notice.		n/a
R&D + GPS	<p><b>Environmental Notice</b></p> <p>Product contains batteries and/or recyclable electric waste. For environment protection do not dispose in household waste, but for recycling take to electric waste collection points provided in your country</p> 		n/a
<b>Copy elements: WARRANTY + DISCLAIMER</b>			
MKT + Legal + R&D	<p><b>Guarantee</b></p> <p>We grant 2 years guarantee on the product commencing on the date of purchase.</p> <p>Within the guarantee period we will eliminate, free of charge, any defects in the appliance resulting from faults in materials or workmanship, either by repairing or replacing the complete appliance as we may choose. Depending on availability replacement of a unit might result in a different color or an equivalent model.</p> <p>This guarantee extends to every country where this appliance is supplied by Braun or its appointed distributor. This guarantee does not cover: damage due to improper use, normal wear or use, especially regarding the brush heads, as well as defects that</p>		all

	<p>have a negligible effect on the value or operation of the appliance.</p> <p>The guarantee becomes void if repairs are undertaken by unauthorised persons and if original Braun parts are not used.</p> <p>This appliance is equipped with a <i>Bluetooth</i> Smart approved radio module. Failure to establish a <i>Bluetooth</i> Smart connection to specific smart phones is not covered under the device guarantee, unless the <i>Bluetooth</i> radio module of this appliance is damaged. The <i>Bluetooth</i> devices are warranted by their own manufacturers and not by Oral-B. Oral-B does not influence or make any recommendations to device manufacturers, and therefore Oral-B does not assume any responsibility for the number of compatible devices with our <i>Bluetooth</i> systems.</p> <p>Oral-B reserves the right, without any prior notice, to make any technical modifications or changes to system implementation of device features, interface, and menu structure changes that are deemed necessary to ensure that Oral-B systems function reliably.</p> <p>To obtain service within the guarantee period, hand in or send the complete appliance with your sales receipt to an authorised Oral-B Braun Customer Service Centre.</p>		
<p><b>Legal</b> <b>+</b> <b>MKT</b></p>	<p><b>Information</b> <b><i>Bluetooth</i><sup>®</sup> radio module</b></p> <p>Although all indicated functions on the Bluetooth device are supported, Oral-B does not ensure 100% reliability in connection, and feature operation consistency.</p> <p>Operation performance and connection reliability are direct consequences of each individual Bluetooth device, software version, as well as the operating system of those <i>Bluetooth</i> devices and company security regulations implemented on the device.</p>		<p><i>n/a</i></p>

	<p>Oral-B adheres to and strictly implements the <i>Bluetooth</i> standard by which <i>Bluetooth</i> devices can communicate and function in Oral-B toothbrushes.</p> <p>However, if device manufacturers fail to implement this standard, <i>Bluetooth</i> compatibility and features will be further compromised and the user may experience functional and feature-related issues. Please note that the software on the <i>Bluetooth</i> device can significantly affect compatibility and operation.</p>		
<p><b>Legal</b> <b>+</b> <b>MKT</b></p>	<p><b>1) Warranty – Exclusions and Limitations</b></p> <p>This limited warranty applies only to the new products manufactured by or for The Procter &amp; Gamble Company, its Affiliates or Subsidiaries (“P&amp;G”) that can be identified by the Braun / Oral-B trademark, trade name, or logo affixed thereto. This limited warranty does not apply to any non-P&amp;G product including hardware and software. P&amp;G is not liable for any damage to or loss of any programs, data, or other information stored on any media contained within the product, or any non-P&amp;G product or part not covered by this limited warranty. Recovery or reinstallation of programs, data or other information is not covered under this limited warranty.</p> <p>This limited warranty does not apply to (i) damage caused by accident, abuse, misuse, neglect, misapplication, or non-P&amp;G product; (ii) damage caused by service performed by anyone other than Braun or authorized Braun service location; (iii) a product or part that has been modified without the written permission of P&amp;G, and (iv) damage arising out of the use of or inability to use the Oral-B Smartphone stand/puck, Smartphone mirror holder, or charging travel case (“Accessories”).</p> <p><b>2) Using your smartphone holder</b></p> <p>The Oral-B Accessories included in the package has been designed to provide you with a convenient way to position your smartphone while you are using the Oral-B app. Try multiple orientations of your smartphone in the Oral-B smartphone holder prior to use to determine the best positioning of your</p>		<p>n/a</p>

	<p>smartphone in the holder. Be sure to try this in a manner which will not harm your smartphone if it falls out of the stand. Do not use in automobiles.</p> <p><b>LIMITATION OF LIABILITY</b></p> <p>TO THE EXTENT PERMITTED BY APPLICABLE LAW, IN NO EVENT SHALL P&amp;G ITS DISTRIBUTORS OR SUPPLIERS BE LIABLE TO YOU OR ANY THIRD PARTY FOR ANY DIRECT, INDIRECT, INCIDENTAL, CONSEQUENTIAL, SPECIAL, EXEMPLARY OR PUNITIVE DAMAGES, OF ANY NATURE WHATSOEVER, ARISING OUT OF THE USE OF OR INABILITY TO USE THE ORAL-B ACCESSORIES, INCLUDING, WITHOUT LIMITATION, INJURY TO PERSONS, PROPERTY DAMAGE, LOSS OF VALUE OF ANY THIRD PARTY PRODUCTS THAT ARE USED IN OR WITH THE ORAL-B ACCESSORIES, OR LOSS OF USE OF THE ORAL-B ACCESSORIES OR ANY THIRD PARTY PRODUCTS THAT ARE USED IN OR WITH THE ORAL-B ACCESSORIES, EVEN IF P&amp;G HAS BEEN ADVISED OF THE POSSIBILITY OF SUCH DAMAGES. WITHOUT LIMITING THE FOREGOING, YOU UNDERSTAND AND AGREE THAT P&amp;G HAS NO LIABILITY FOR ANY DAMAGE OR DESTRUCTION TO CONSUMER ELECTRONICS DEVICES OR OTHER PERSONAL PROPERTY THAT ARE CONTAINED ON OR EXTERIOR TO THE ORAL-B ACCESSORIES, OR ANY LOSS OF DATA CONTAINED IN THE FOREGOING DEVICES. IN NO EVENT SHALL ANY RECOVERY AGAINST ORAL-B EXCEED THE ACTUAL PRICE PAID FOR THE PURCHASE OF THE PRODUCT.</p>		
<p><b>Legal</b> <b>+</b> <b>MKT</b></p>	<p><b>Warranty replacement brush heads</b></p> <p>Oral-B warranty will be voided if electric rechargeable handle damage is found to be attributed to the use of non-Oral-B replacement brush heads.</p> <p>Oral-B does not recommend the use of non-Oral-B replacement brush heads.</p> <ul style="list-style-type: none"> <li>• Oral-B has no control over the quality of non-Oral-B replacement brush heads. Therefore, we cannot ensure the cleaning performance of non-Oral-B replacement brush heads, as communicated with the electric rechargeable handle at time of initial purchase.</li> </ul>		<p><i>n/a</i></p>



- Oral-B cannot ensure a good fit of non-Oral-B replacement brush heads.
  - Oral-B cannot predict the long-term effect of non-Oral-B replacement brush heads on handle wear.
- All Oral-B replacement brush heads carry the Oral-B logo and meet Oral-B's high quality standards. Oral-B does not sell replacement brush heads or handle parts under any other brand name.

**Copy elements: TROUBLE SHOOTING**

R&D

**Trouble Shooting**

Problem	Possible reason	Remedy
<b>APP</b>		
Handle does not operate (properly) with Oral-B™ App.	<ol style="list-style-type: none"> <li>1. Oral-B™ App is closed.</li> <li>2. <i>Bluetooth</i> is not activated on smartphone.</li> <li>3. <i>Bluetooth</i> is deactivated on handle; <i>Bluetooth indicator (7)</i> is off.</li> <li>4. <i>Bluetooth</i> connection to smartphone has been lost.</li> <li>5. Your smartphone does not support <i>Bluetooth 4.0</i> (or higher)/<i>Bluetooth Smart</i>.</li> <li>6. Handle on plugged-in charger.</li> <li>7. Outdated Oral-B™ App.</li> </ol>	<ol style="list-style-type: none"> <li>1. <b>Launch</b> Oral-B™ App.</li> <li>2. Activate <b>Bluetooth on</b> smartphone (described in its user manual).</li> <li>3. Activate <b>Bluetooth</b> by simultaneously pressing on/off (3) and mode button (4) for 2 seconds until <b>Bluetooth indicator (7)</b> turns on.</li> <li>4. Pair handle and smartphone again via app settings. Keep your smartphone in close proximity when using it with handle.</li> </ol>




all

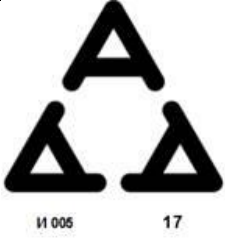


		<p>5. Your smartphone must support <i>Bluetooth</i> 4.0 (or higher)/ <i>Bluetooth</i> Smart in order to pair handle. Check App Store<sup>(SM)</sup> or Google Play™ for compatible smartphones.</p> <p>6. <b>Bluetooth</b> is deactivated while handle is placed on plugged-in charger.</p> <p>7. <b>Download latest Oral-B™ App.</b></p>		
Reset to factory settings.	Original App functionality wanted.	Press and hold on/off button (3) for 10 seconds until all indicator lights double blink simultaneously.		
<b>TOOTHBRUSH</b>				
Handle is not operating (during first use).	Battery has a very low charge level; no lights illuminate.	Charge at least for 30 min.		
Short stuttering sounds/flashing light after 2 minutes or handle does not operate any timer.	Timer has been modified/deactivated via App.	Use App to change timer settings or perform factory reset (see App Trouble Shootings).		
Handle does not charge.	1. Battery is at a very low charger level.	1. Charging lights might not flash		

		2. Ambient temperature for charging is out of valid range ( $\leq 0^{\circ}\text{C}$ and $\geq 60^{\circ}\text{C}$ ).	immediately; it can take up to 30 minutes. 2. Recommended ambient temperature for charging is $5^{\circ}\text{C}$ to $35^{\circ}\text{C}$ .		
	<b>ACCESSORIES</b>				
	Charging performance of USB-connected devices via charging travel case are not as expected.	Your USB-connected device may require your manufacturer's power source to fulfill its charging performance.	Use original manufacturer power source of USB-connected device to achieve desired charging performance.		

**Copy elements: SPECIFIC REGIONAL REQUIREMENTS**

<b>GPS</b>	Protection class II and III	<i>For CAR and RU only</i>	
<b>GPS + R&amp;D</b>	<b>Made in Germany</b>	<i>Translation only in: Arabic, Russian, Ukrainian, Kazak, Turkish</i>	
<b>GPS + R&amp;D</b>	<b>Manufacturing date code:</b> To determine the year and week of manufacture, you may refer to the production code located on the type plates/bottom of devices. <b>Basic charger or handle:</b> Identify the production code (min. 10 characters long) starting with a letter.	<i>Translation only in: Arabic, Russian, Ukrainian, Kazak</i>	

	<p>First digit of the production code refers to the year of manufacture. Next two digits refer to the calendar week of manufacture.  Example: «809» – means the product was manufactured in week 9 of 2018.</p> <p><u>Charging stand or Smart plug or Charging travel case:</u> Identify the production code (min. 5 characters long). First 2 digits of the production code refers to the year of manufacture. Next 2 digits refer to the calendar week of manufacture.  Example: «1809» – means the product was manufactured in week 9 of 2018.</p>		
GPS		<i>For Turkey only</i>	
GPS		<i>For Russia, Belarus, Kazakhstan</i>	
GPS		<i>For Ukraine</i>	
GPS	Plant address: Procter & Gamble Manufacturing GmbH Baumhofstr. 40, 97828 Marktheidenfeld, Germany		
GPS	Manufactured by: Braun GmbH, Frankfurter Str.145, D-61476 Kronberg/Ts., Germany	<i>For EE region only (use info as needed):</i>	
GPS	Appliance life: 2 years	<i>Russia, Belarus, Kazakhstan, Ukraine</i>	
GPS	Basic charger: 220-240 V ac~ 0,9 W 50-60 Hz IP 67  Smart plug: 100-240 V ac~		

	7 W 50-60Hz IP X4		
<b>GPS</b>	<p>a) Electrical toothbrush type 3771 with charging stand type 3757.</p> <p>b) Electrical toothbrush type 3771 with charging stand type 3755 with charging travel case type 3760 with power supply type 492-5214.</p> <p>c) Electrical toothbrush type 3771 with charging stand type 3755 with power supply type 492-5214.</p> <p>d) Electrical toothbrush type 3771 with charging stand type 3757 with charging travel case type 3760 with power supply type 492-5214.</p> <p><b>Note:</b> Description depends on model purchased.</p>		
<b>GPS</b>		<i>For Serbia only – Tbc on certificate number</i>	n/a
<b>GPS</b>		<i>For Moldova only - Tbc on certificate number</i>	n/a
<b>GPS</b>		<i>For South Africa only –</i>	n/a

		<p><i>Tbc on certificate number</i></p> <p><i>In ENGLISH Copy</i></p>	
	<p>Braun GmbH has not approved any changes or modifications to this device by the user. Any changes or modifications could void the user's authority to operate the equipment.</p> <p><i>Braun GmbH n'approuve aucune modification apportée à l'appareil par l'utilisateur, quelle qu'en soit la nature. Tout changement ou modification peuvent annuler le droit d'utilisation de l'appareil par l'utilisateur.</i></p> <p>This device complies with Part 15 of the FCC Rules and Industry Canada licence-exempt RSS standard(s). Operation is subject to the following two conditions: (1) this device may not cause interference, and (2) this device must accept any interference, including interference that may cause undesired operation of the device.</p> <p><i>Le présent appareil est conforme aux CNR d'Industrie Canada applicables aux appareils radio exempts de licence. L'exploitation est autorisée aux deux conditions suivantes : (1) l'appareil ne doit pas produire de brouillage, et (2) l'utilisateur de l'appareil doit accepter tout brouillage radioélectrique subi, même si le brouillage est susceptible d'en compromettre le fonctionnement.</i></p> <p>This transceiver complies with FCC and ISED RF exposure limits and has been evaluated in compliance with portable exposure conditions. According to FCC/ISED rules, it is exempted from SAR testing so there is no limitation as to which distance can be used from the body.</p> <p>This device needs to be installed and used on distance greater than 5 mm from human body.</p>	<p><i>For FCC and ISED</i></p>	

*Le présent appareil est conforme à l'exposition aux radiations FCC / ISED définies pour un environnement non contrôlé et répond aux directives d'exposition de la fréquence de la FCC radiofréquence (RF) et RSS-102 de la fréquence radio (RF) ISED règles d'exposition. L'émetteur ne doit pas être colocalisé ni fonctionner conjointement avec à autre antenne ou autre émetteur.*

*Cet appareil doit être installé et utilisé à une distance supérieure à 5 mm du corps humain.*

This equipment has been tested and found to comply with the limits for a Class B digital device, pursuant to part 15 of the FCC Rules. These limits are designed to provide reasonable protection against harmful interference in a residential installation. This equipment generates, uses and can radiate radio frequency energy and, if not installed and used in accordance with the instructions, may cause harmful interference to radio communications. However, there is no guarantee that interference will not occur in a particular installation. If this equipment does cause harmful interference to radio or television reception, which can be determined by turning the equipment off and on, the user is encouraged to try to correct the interference by one or more of the following measures:

- Reorient or relocate the receiving antenna.
- Increase the separation between the equipment and receiver.
- Connect the equipment into an outlet on a circuit different from that to which the receiver is connected.

- Consult the dealer or an experienced radio/TV technician for help.

This Class B digital apparatus complies with Canadian ICES-003.

*Cet appareil numérique de classe B est conforme à la norme canadienne NMB-003.*