



Internal Photos

900-620 - Paxton 10 PaxLock Pro - Latch (Galaxy Handle)

900-630 - Paxton 10 PaxLock Pro - Latch (Eclipse Handle)

900-640 - Paxton 10 PaxLock Pro - Mortise (Galaxy Handle)

900-650 - Paxton 10 PaxLock Pro - Mortise (Eclipse Handle)

Date: 6-Jan-20

The PCB are identical in all four models of the Paxton 10 PaxLock Pro.

Product: Paxton 10 PaxLock Pro - Latch Galaxy
Part No. 900-620
FCC ID: USE900650
IC ID: 10217A-900650

Product: Paxton 10 PaxLock Pro - Latch Eclipse
Part No. 900-630
FCC ID: USE900650
IC ID: 10217A-900650

Product: Paxton 10 PaxLock Pro - Mortise Galaxy
Part No. 900-640
FCC ID: USE900650
IC ID: 10217A-900650

Product: Paxton 10 PaxLock Pro - Mortise Eclipse
Part No. 900-650
FCC ID: USE900650
IC ID: 10217A-900650

INSECURE SIDE



Internal view of PCB



Internal view

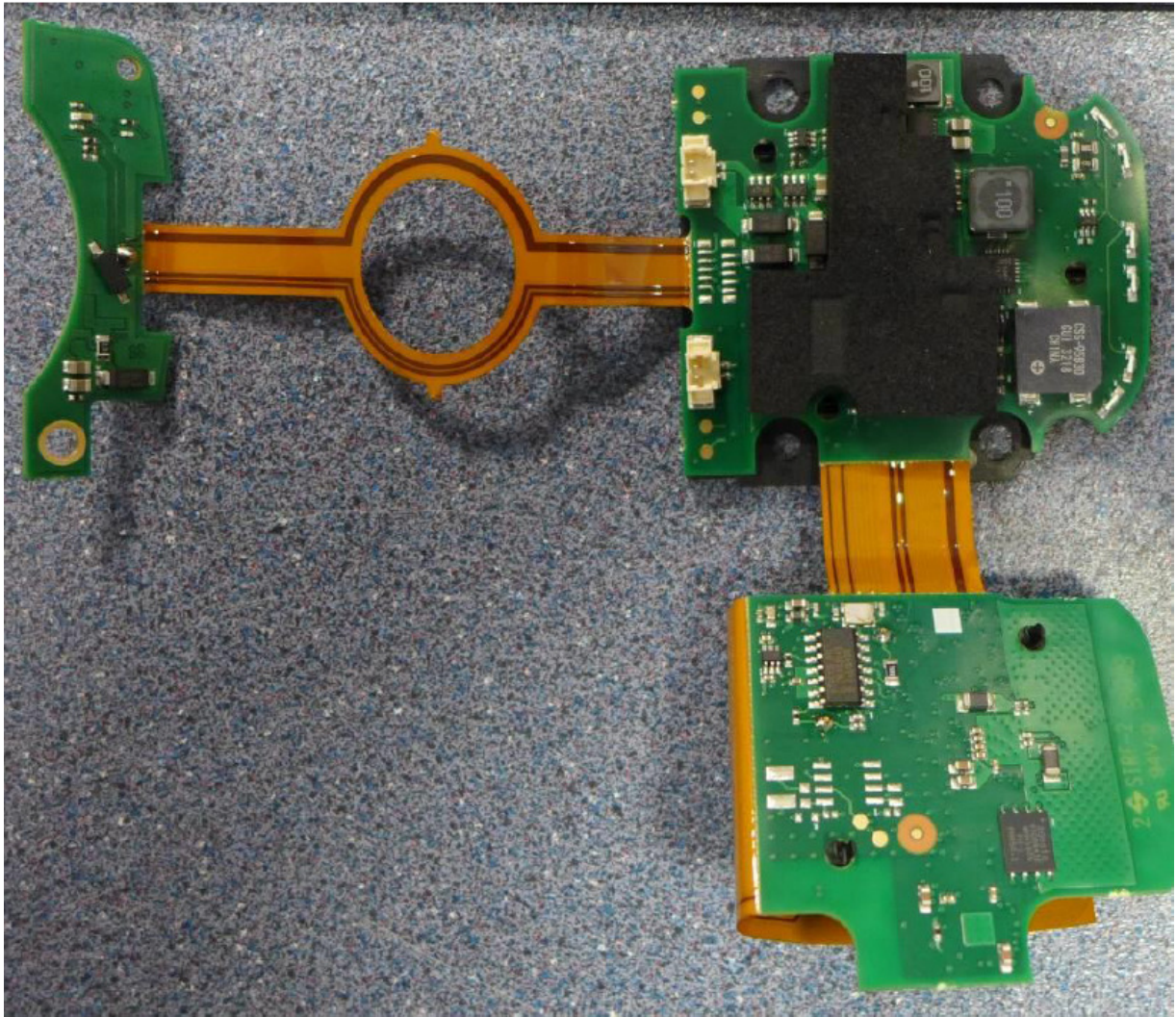


Front enclosure internal view

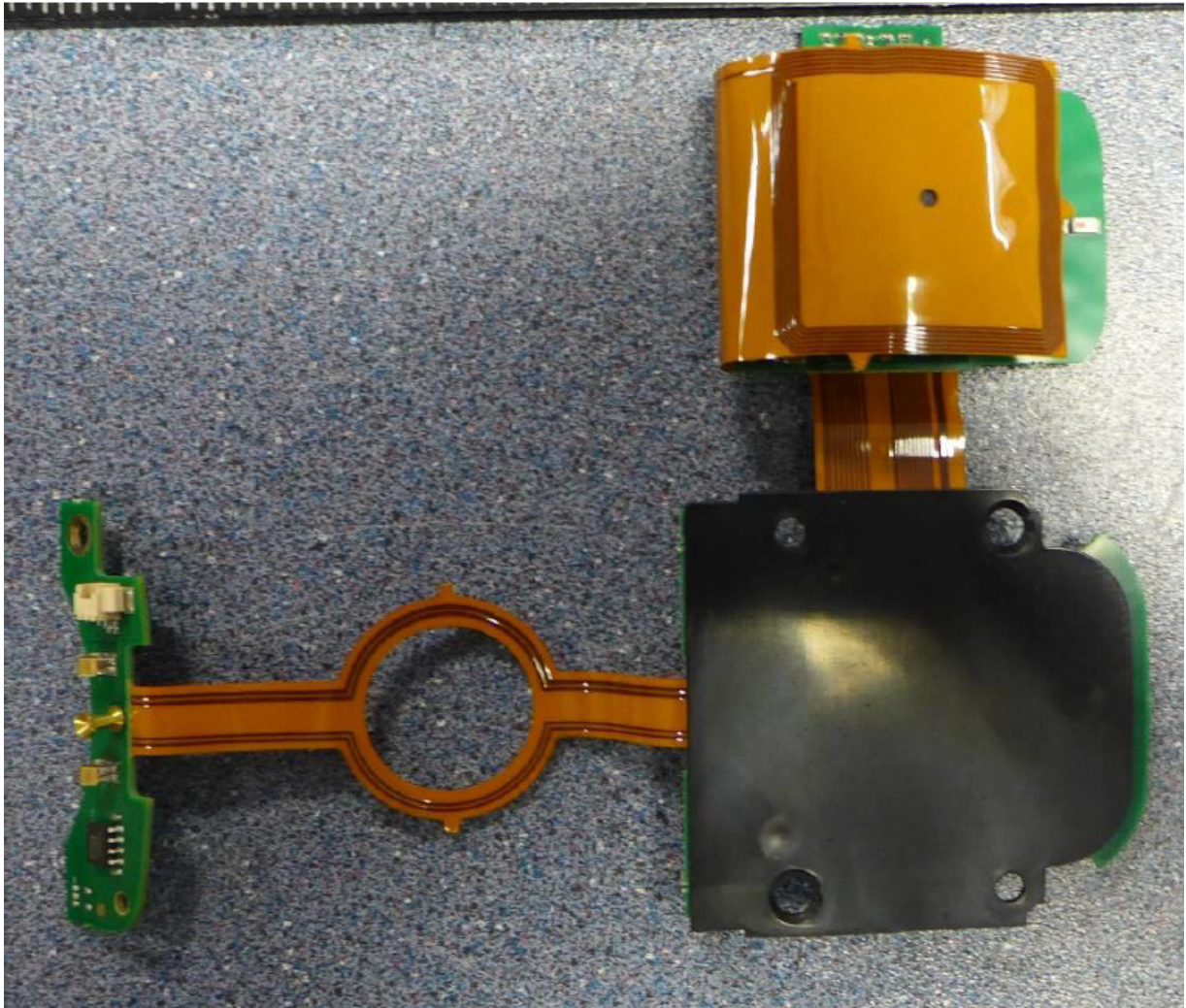
SECURE SIDE



Internal view of PCB



Top view of PCB



Underside view of PCB