

Internal Photos

900-150 - Net2 Paxlock ANSI (Eclipse Handle)

Date: 20-Feb-18

Product: Net2 Paxlock ANSI (Eclipse Handle)
Part No. 900-150
FCC ID: USE900120
IC ID: 10217A-900120

INSECURE SIDE

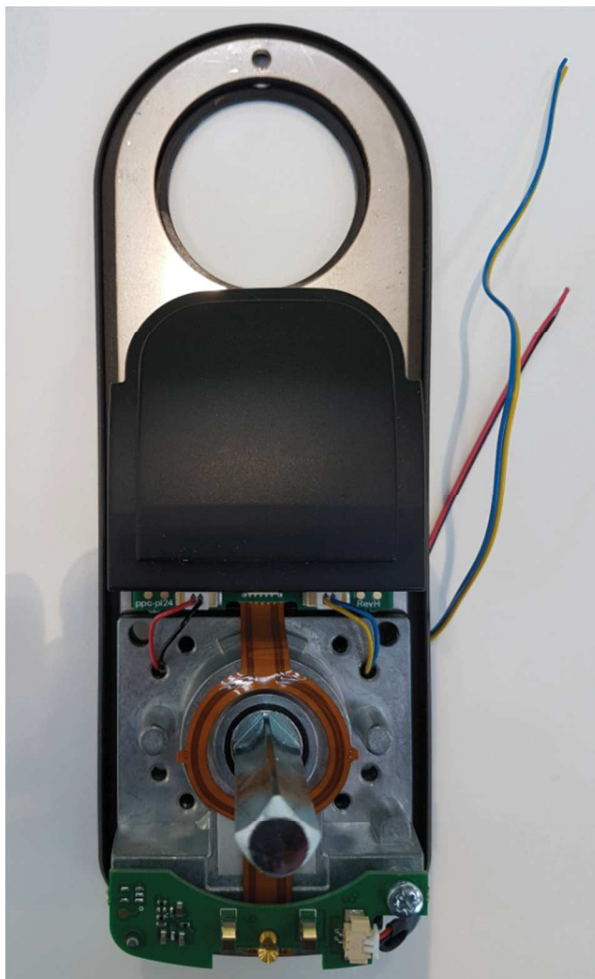


Figure 1 – Front view

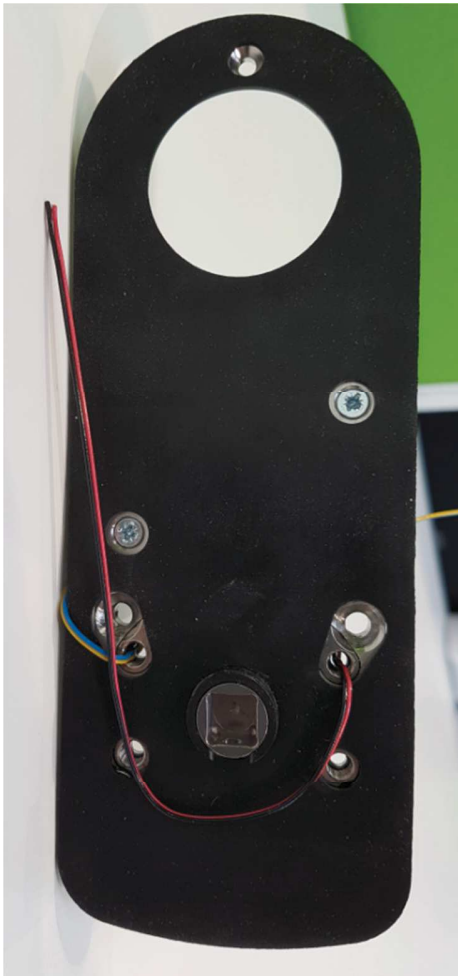


Figure 2 – Bottom view of front of unit



Figure 3 – Inside housing view



Figure 4 – Front view of Radio Module removed from main housing



Figure 5 – Rear view of Radio Module removed from main housing

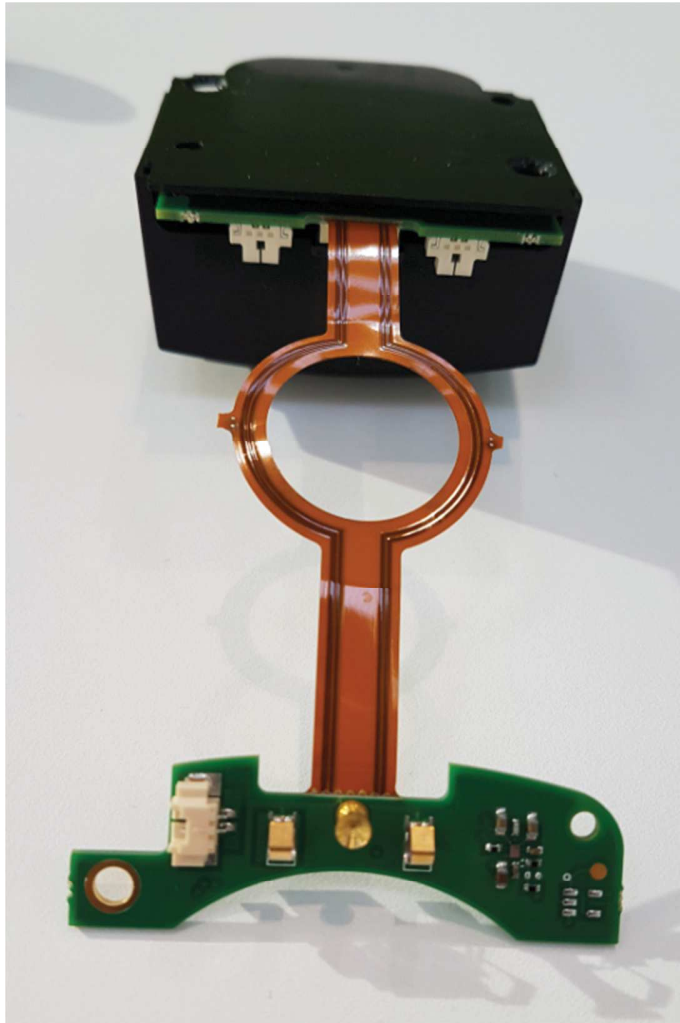


Figure 6 – Under side view of Radio Module removed from main housing

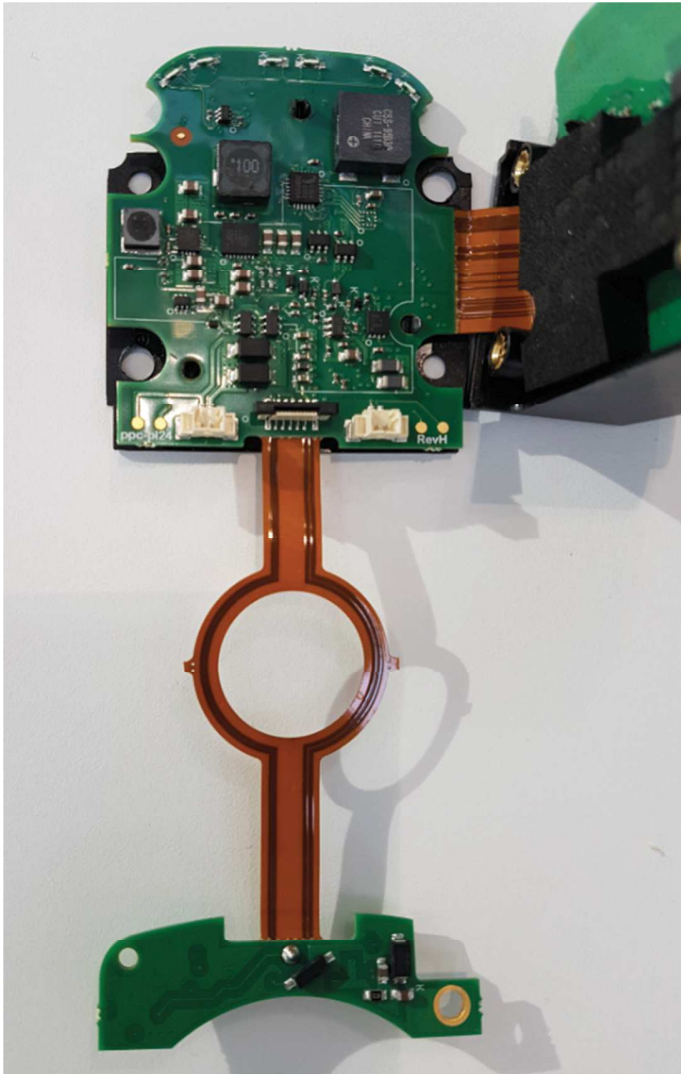


Figure 7 – Front view of Radio Module removed from main housing with cover removed

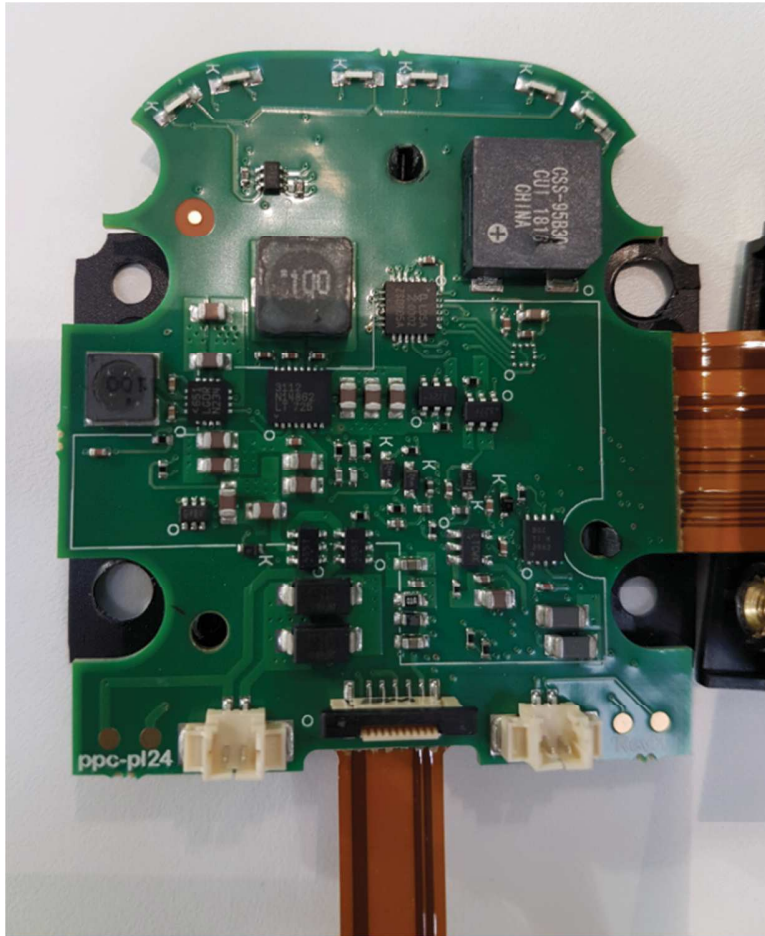


Figure 8 – Front close up view of Radio Module removed from main housing with cover removed

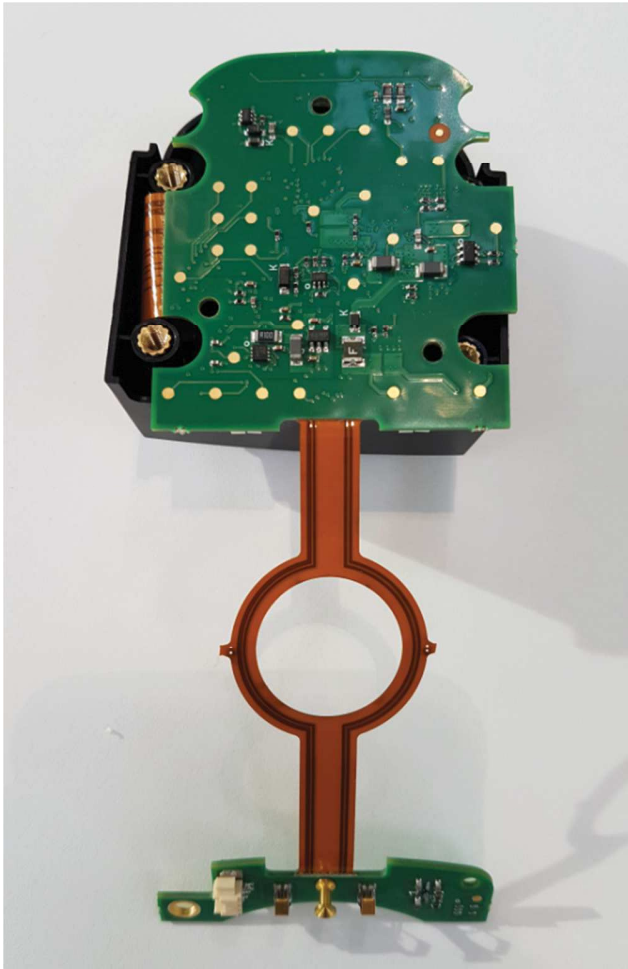


Figure 9 – Rear view of Radio Module removed from main housing

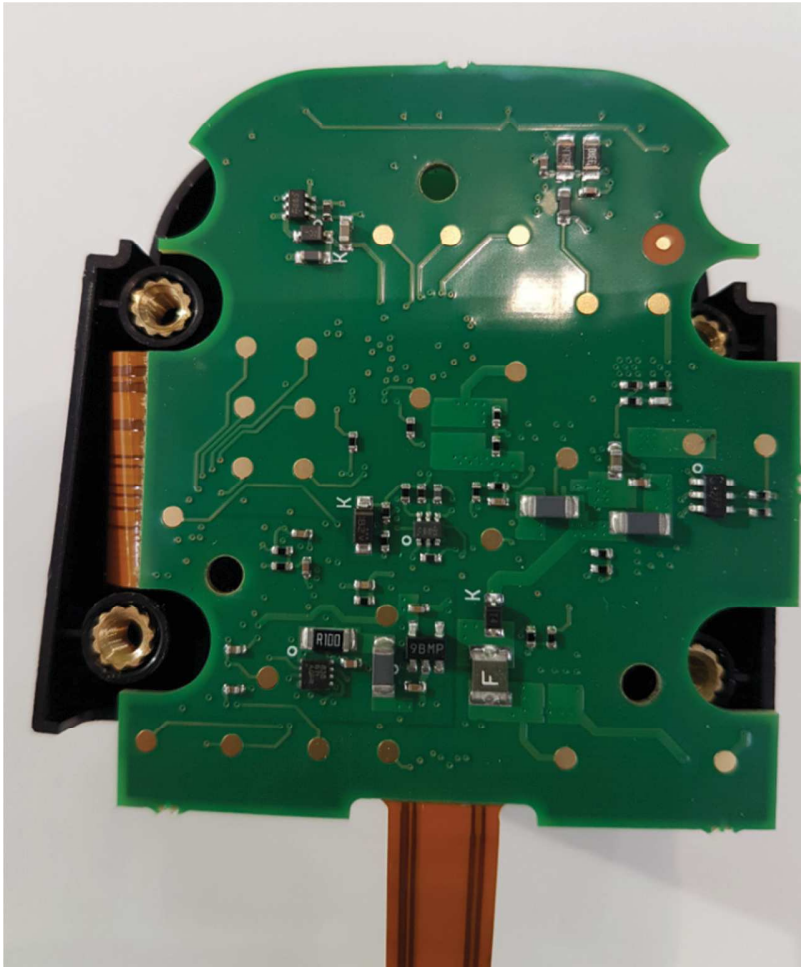


Figure 10 – Close up view of rear of Radio Module removed from main housing

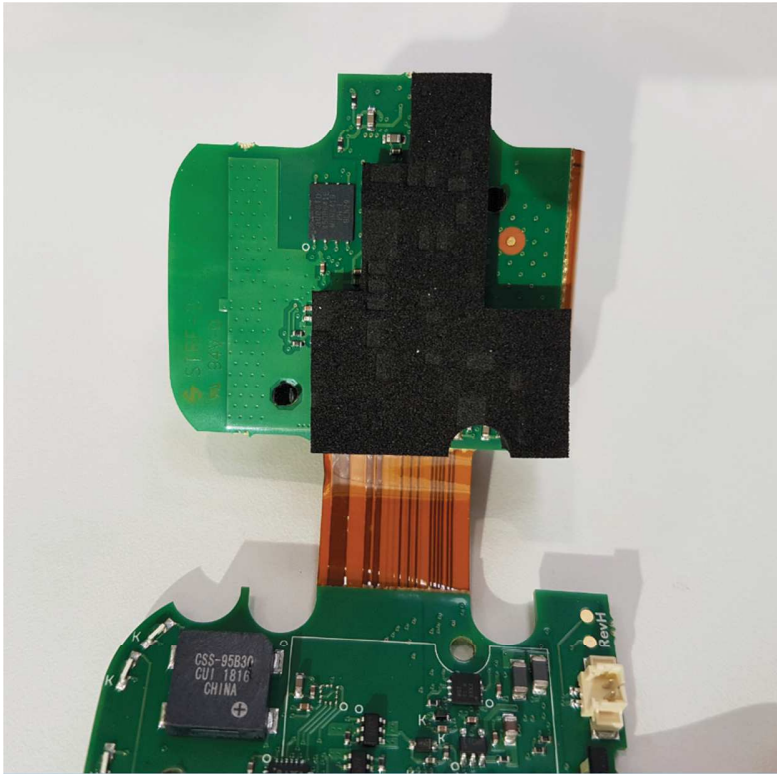


Figure 11 – Underside view of flexible PCB of Radio Module removed from main housing

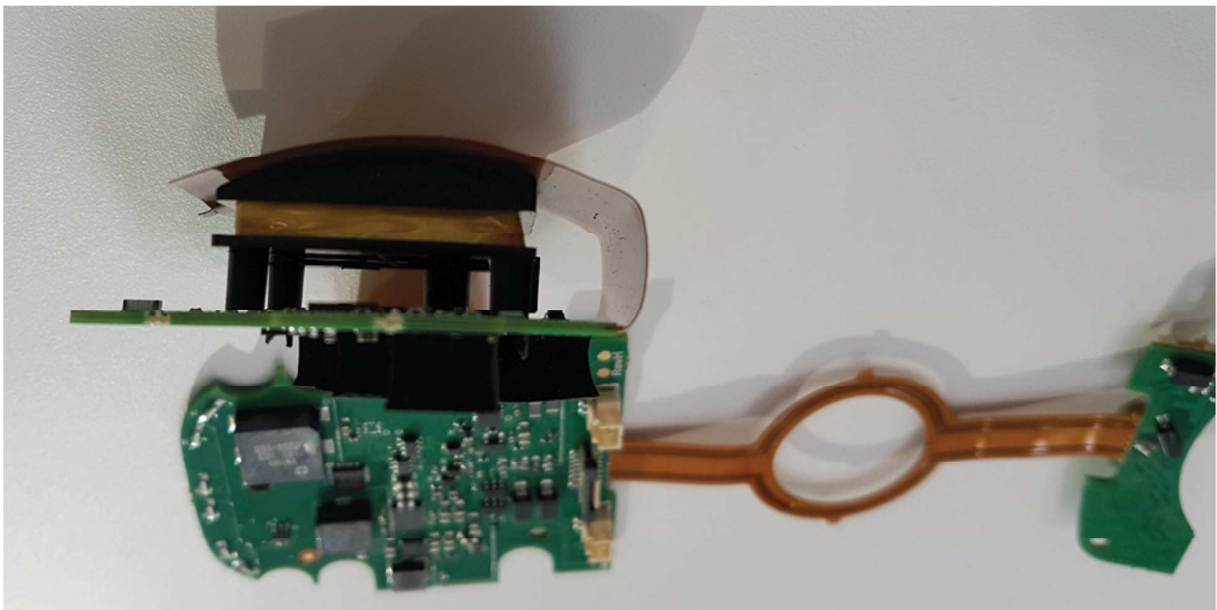


Figure 12 – Side view of flexible PCB of Radio Module removed from main housing

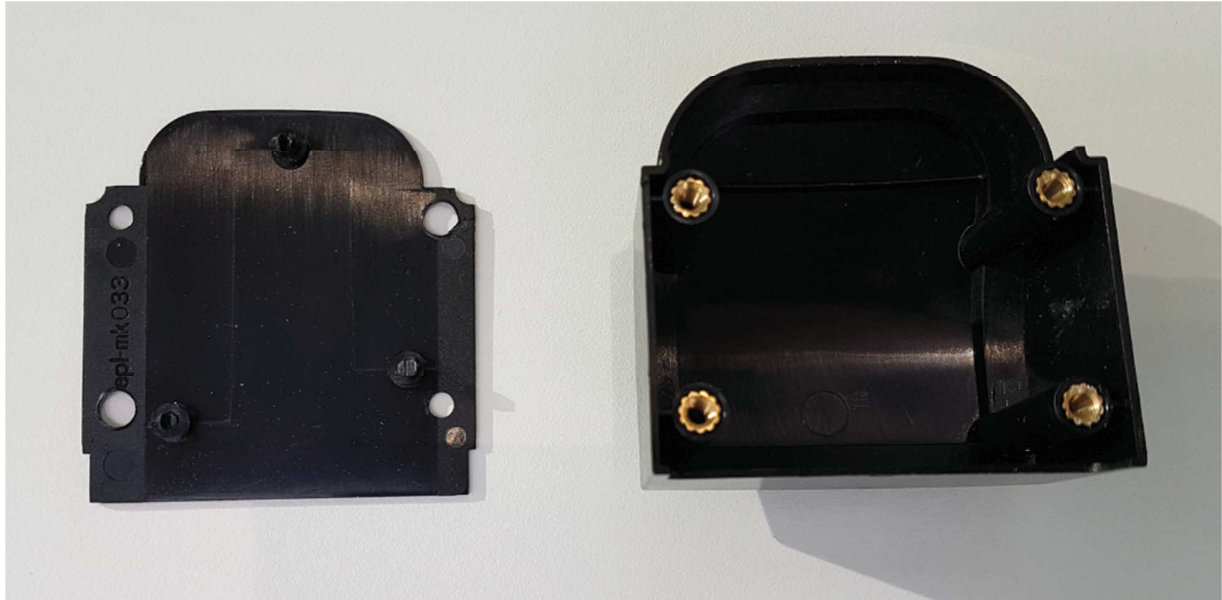


Figure 13 –Rear view of Radio Module cover removed from main housing and PCB



Figure 14 –Front view of Radio Module cover removed from main housing and PCB

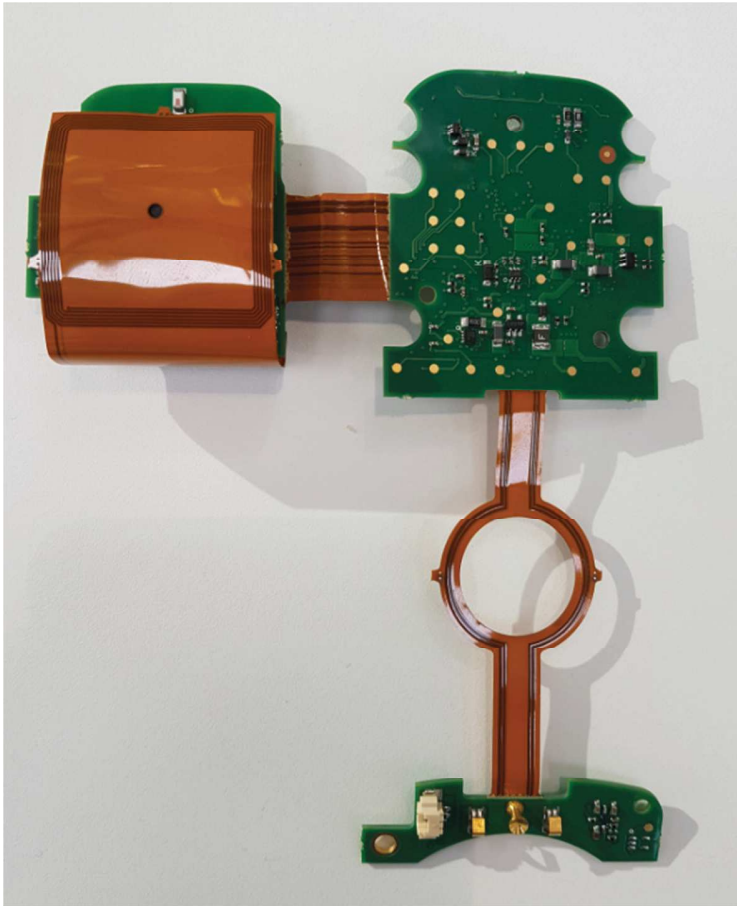


Figure 15 –Front view of Radio Module and flexible PCB with radio coil

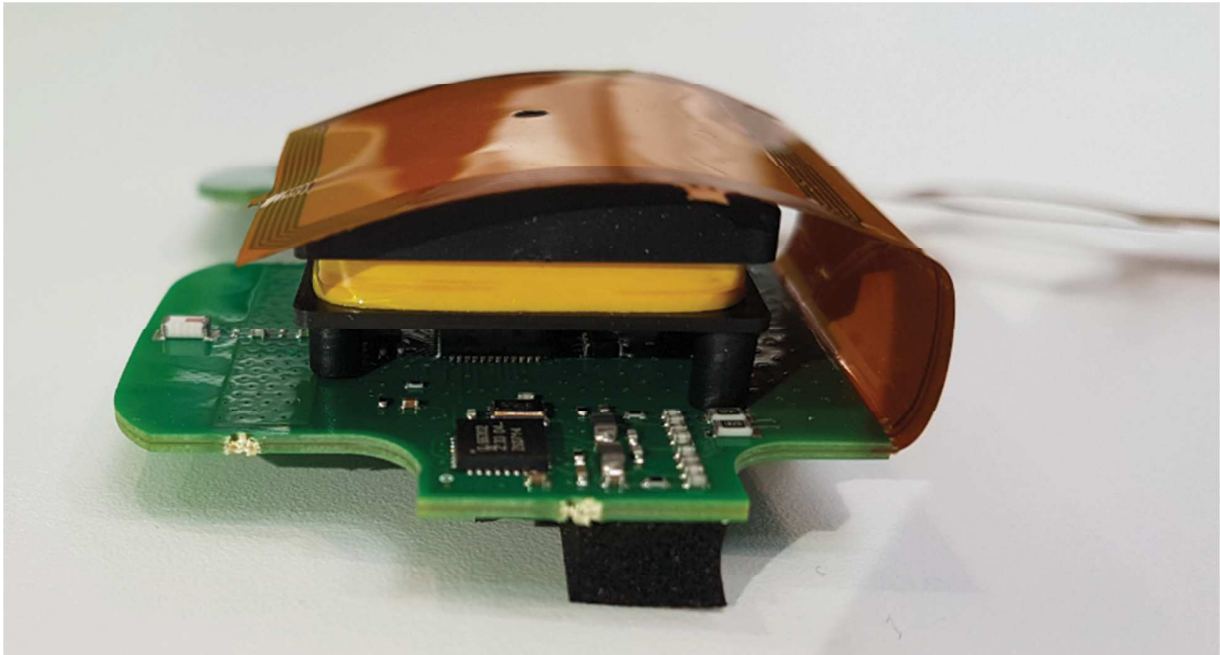


Figure 16 –Side view of Radio Module and flexible PCB with radio coil

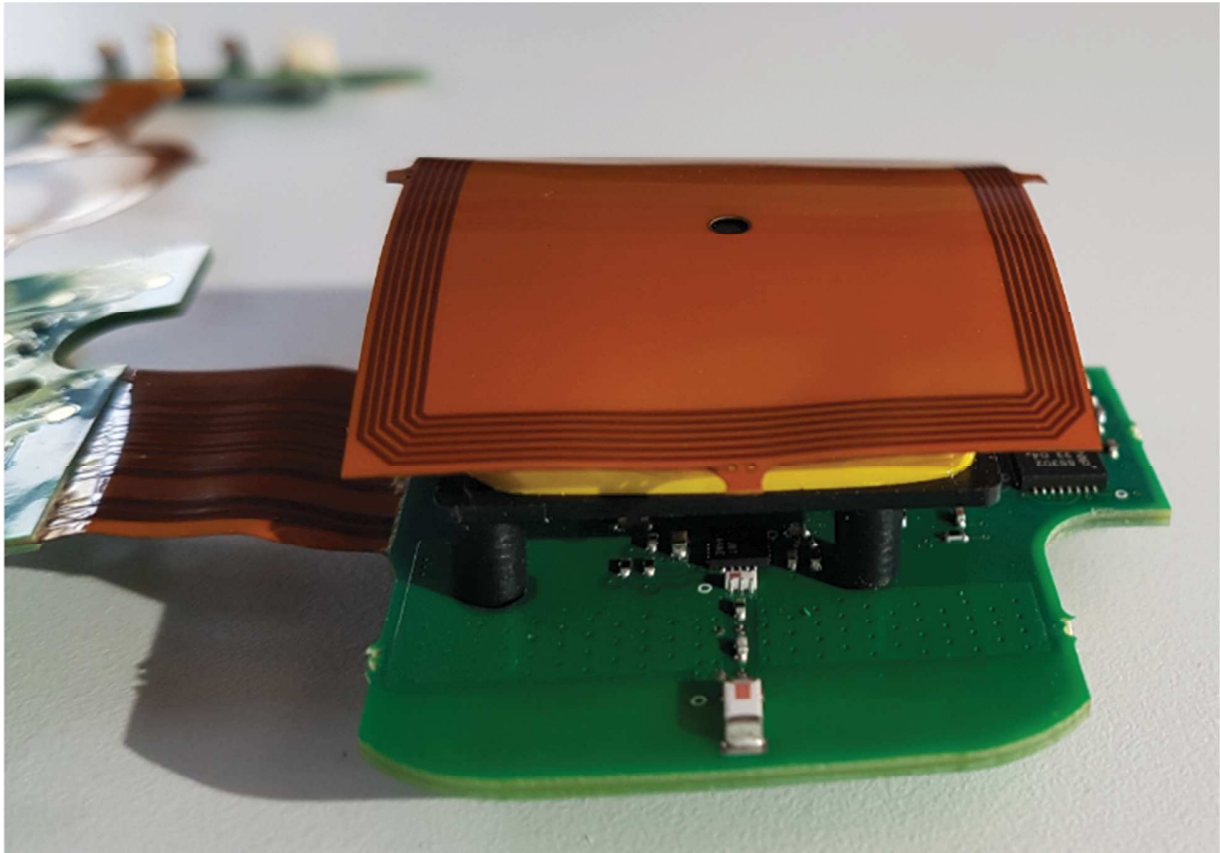


Figure 17 –Side view of Radio Module and flexible PCB with radio coil

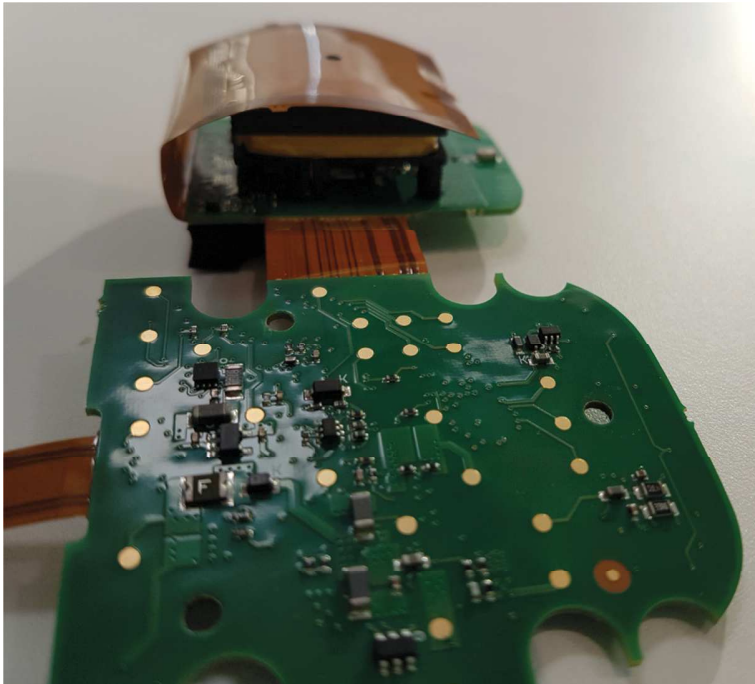


Figure 18 –Close up view of Radio Module and flexible PCB with radio coil

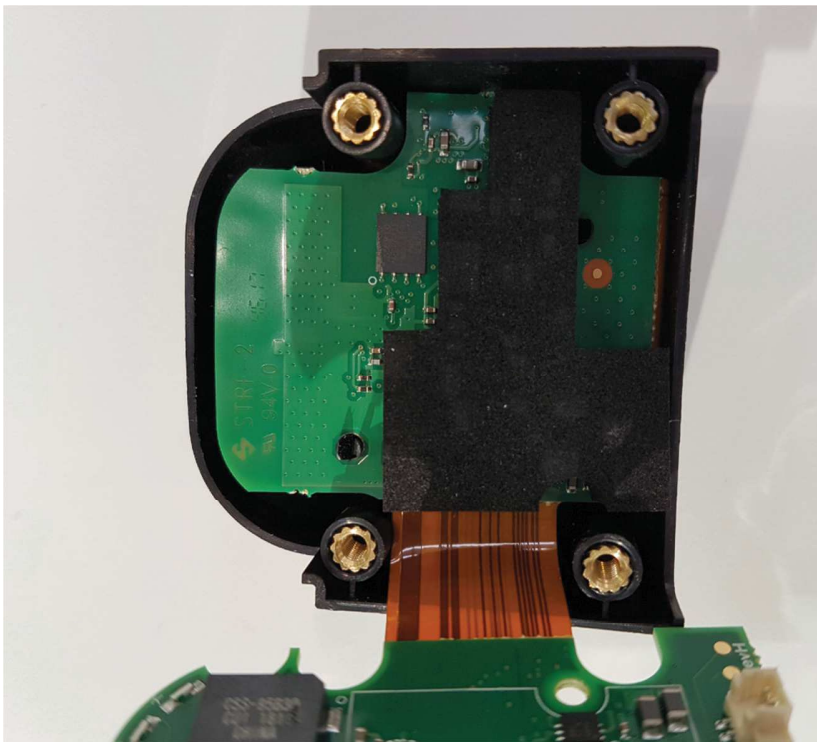


Figure 19 –Close up view of Radio Module and flexible PCB with Plastic housing



Figure 20 –Radio Module and Coil

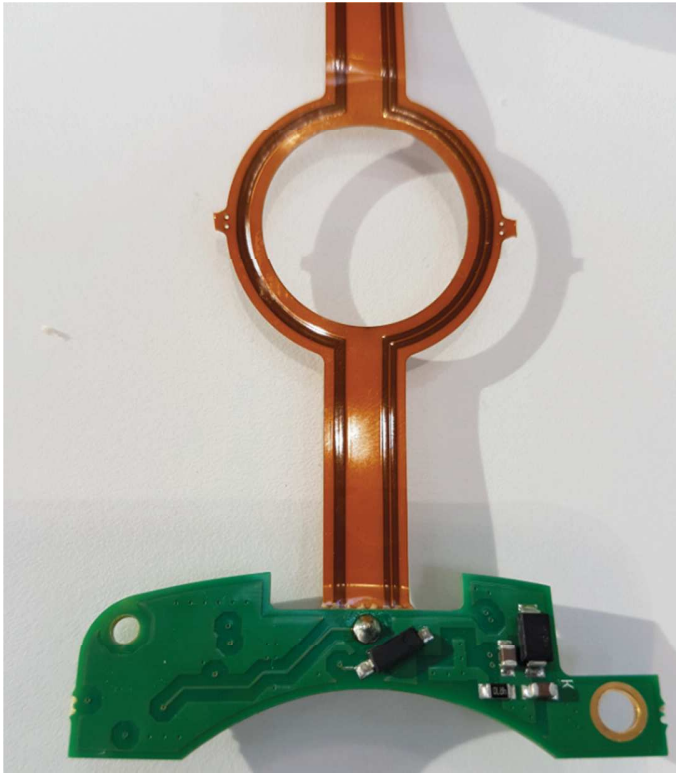


Figure 21 –End of Flexible PCB

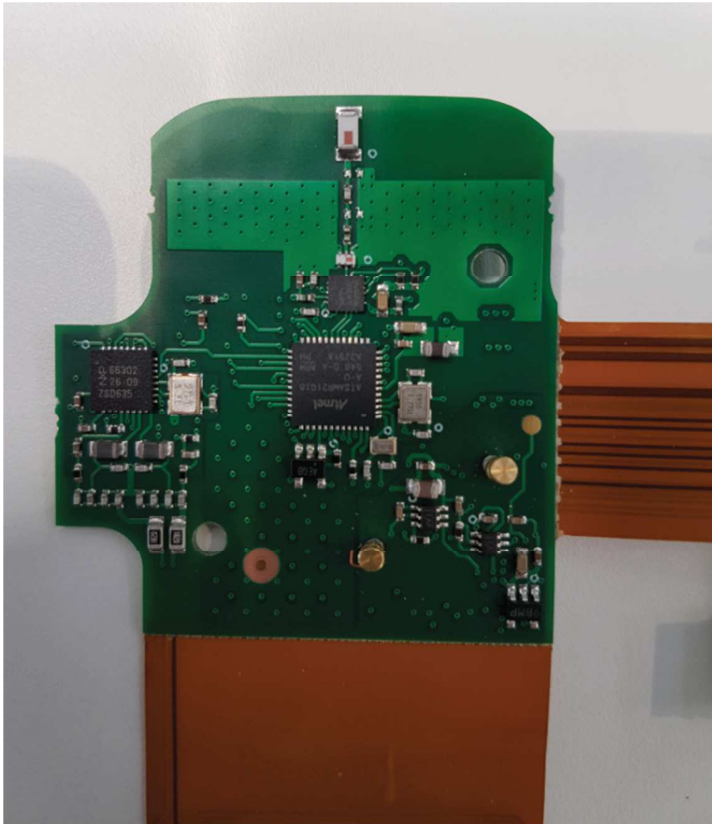


Figure 21 –Front view of Radio Module main PCB



Figure 22 –Rear view of Radio Module coil housing opened out from main PCB

SECURE SIDE



Figure 3 – Front view with Battery compartment and PCB

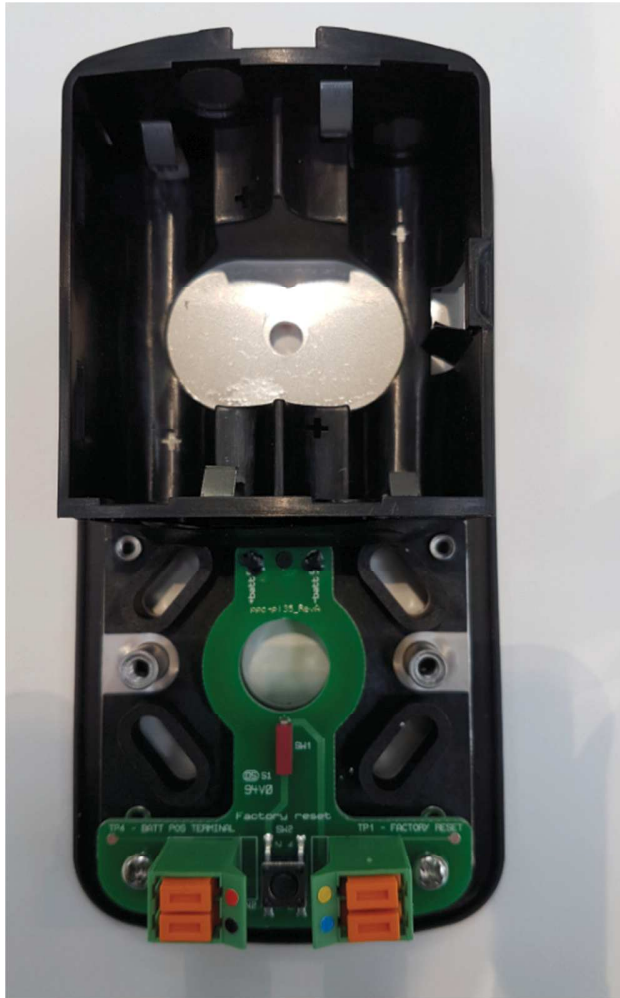


Figure 4 – Front view battery cover removed



Figure 3 – Inside housing view with battery and PCB removed.