



## **Internal Photos**

### **900-120 - NET2 Paxlock (Galaxy Handle)**

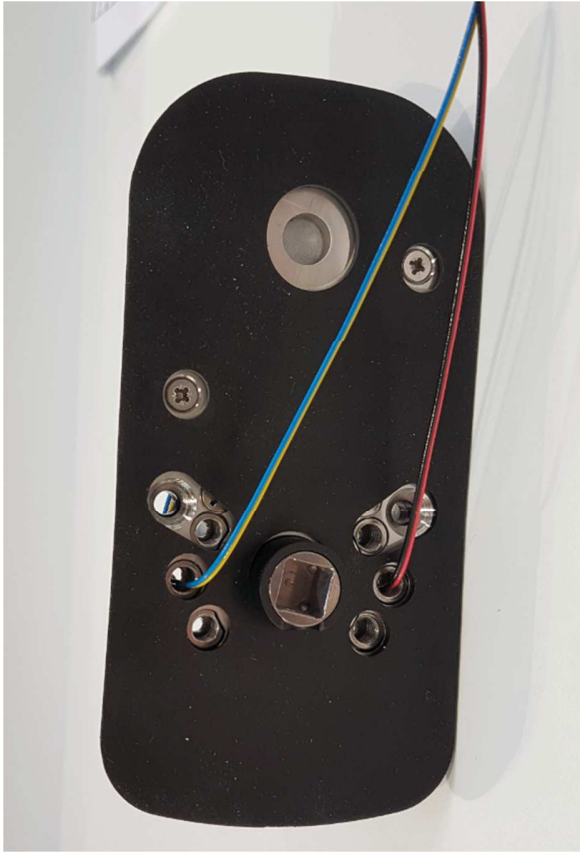
Date: 20-Feb-18

Product: Net2 Paxlock (Galaxy Handle)  
Part No. 900-120  
FCC ID: USE900120  
IC ID: 10217A-900120

#### **INSECURE SIDE**



**Figure 1 – Front view**



**Figure 2 – Bottom view of front of unit**



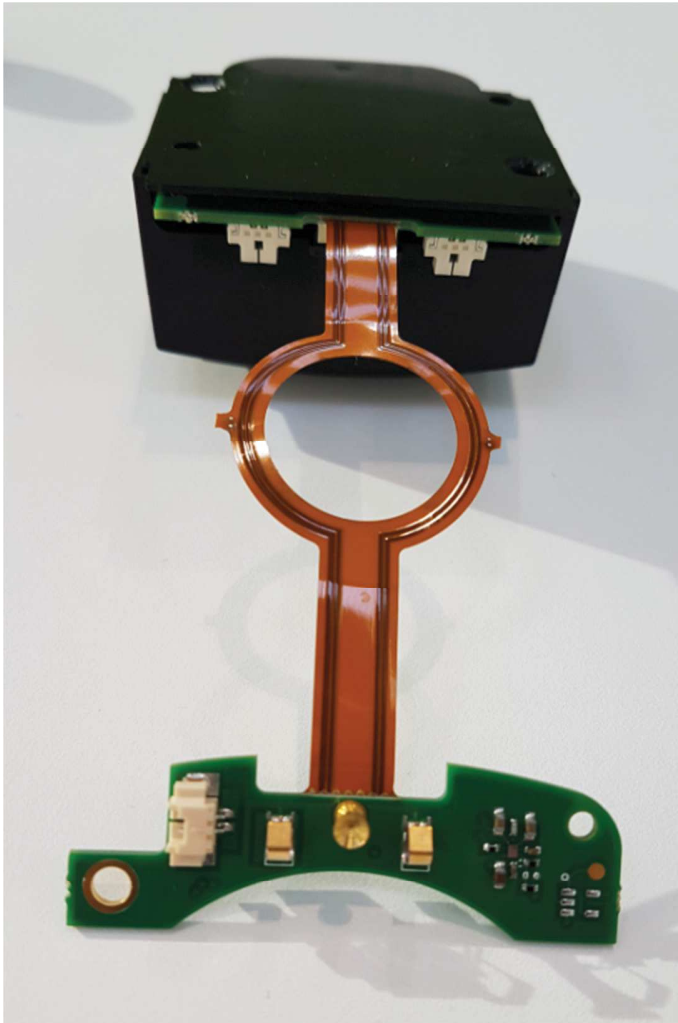
**Figure 3 – Inside housing view**



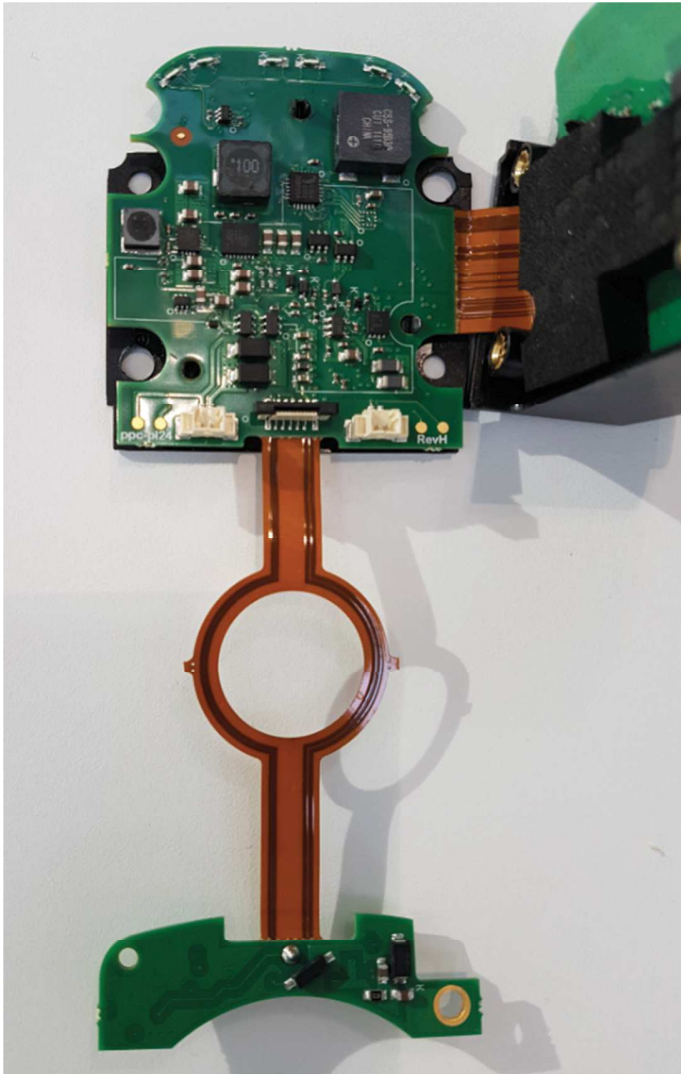
**Figure 4 – Front view of Radio Module removed from main housing**



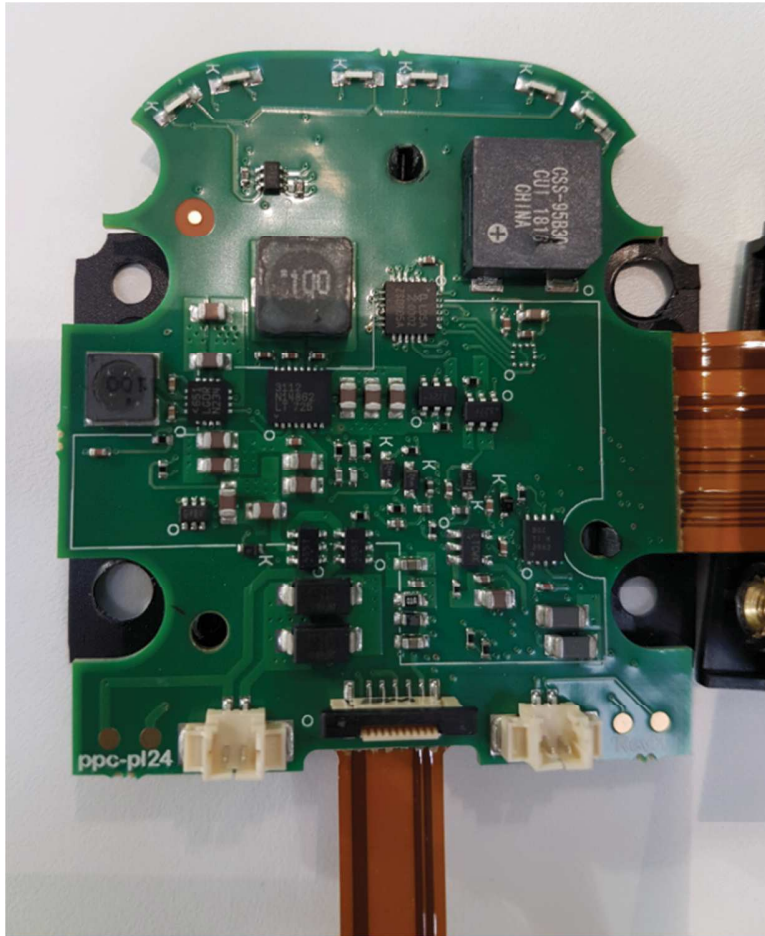
**Figure 5 – Rear view of Radio Module removed from main housing**



**Figure 6 – Under side view of Radio Module removed from main housing**

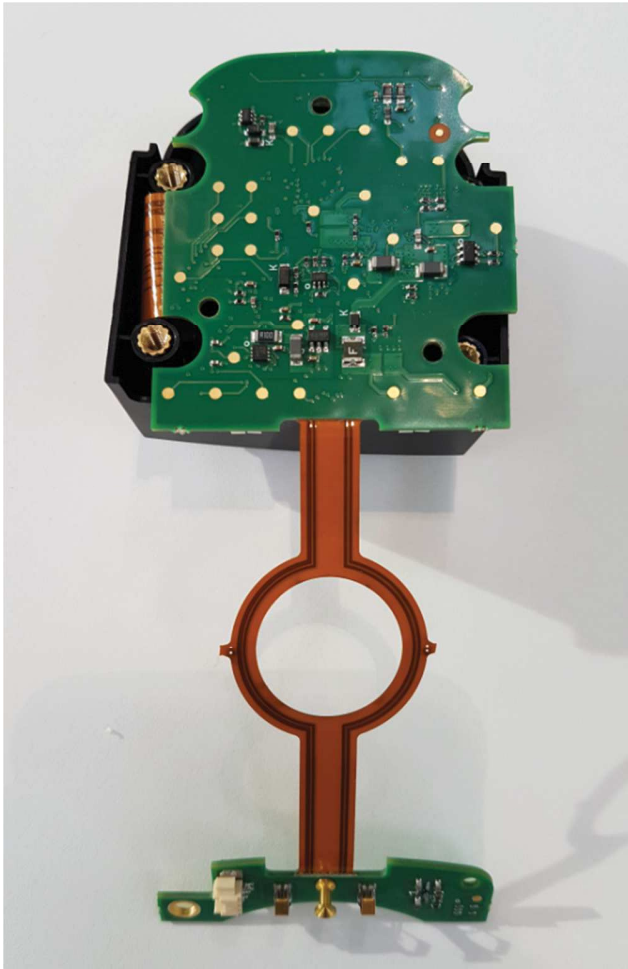


**Figure 7 – Front view of Radio Module removed from main housing with cover removed**



**Figure 8 – Front close up view of Radio Module removed from main housing with cover removed**





**Figure 9 – Rear view of Radio Module removed from main housing**

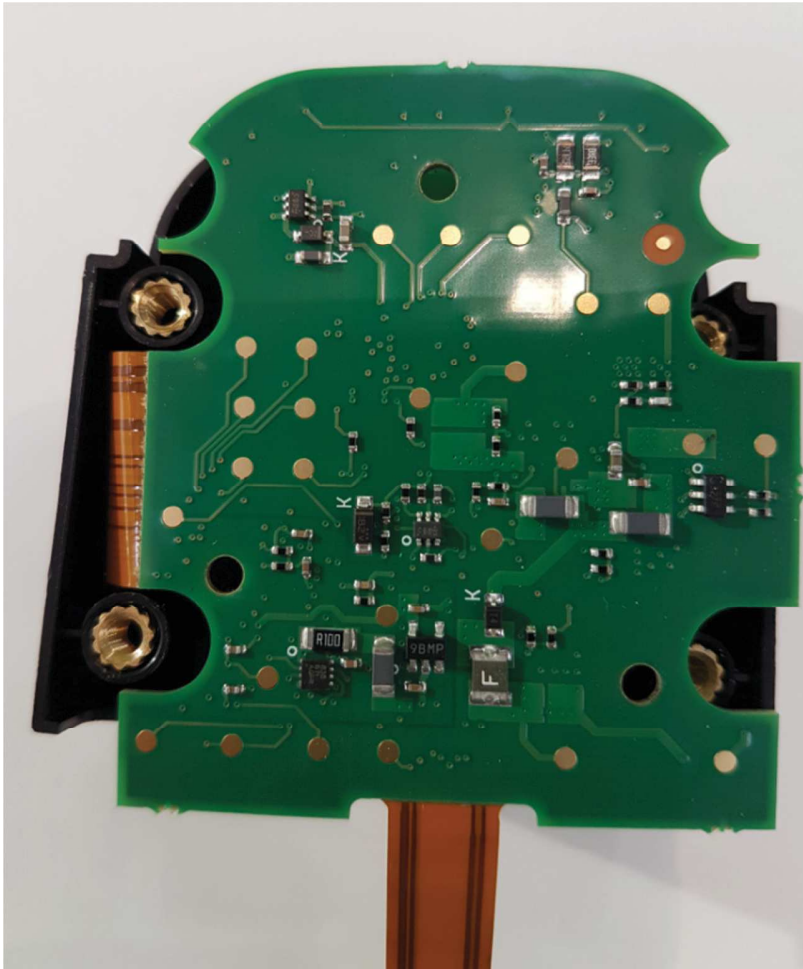
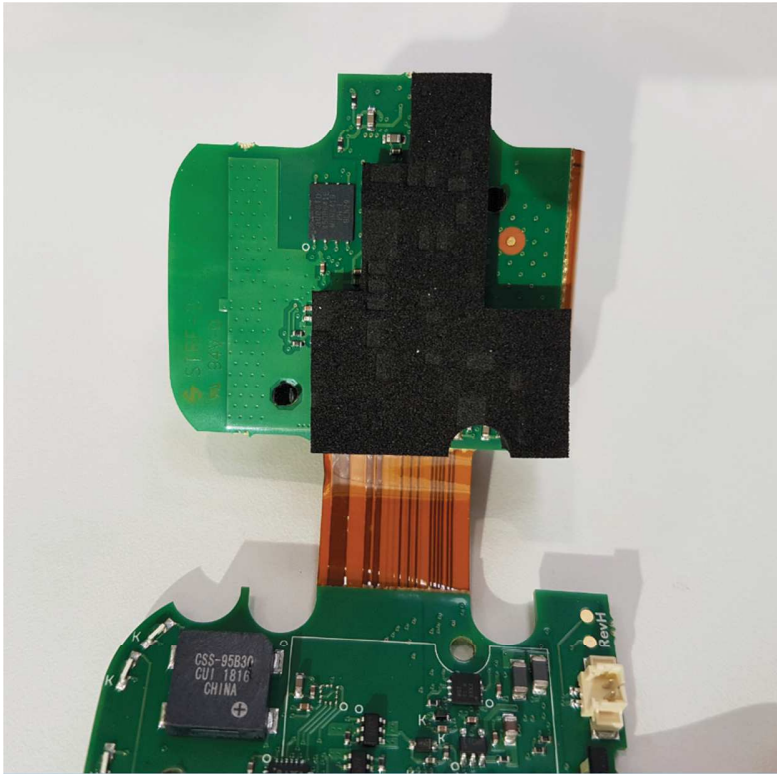
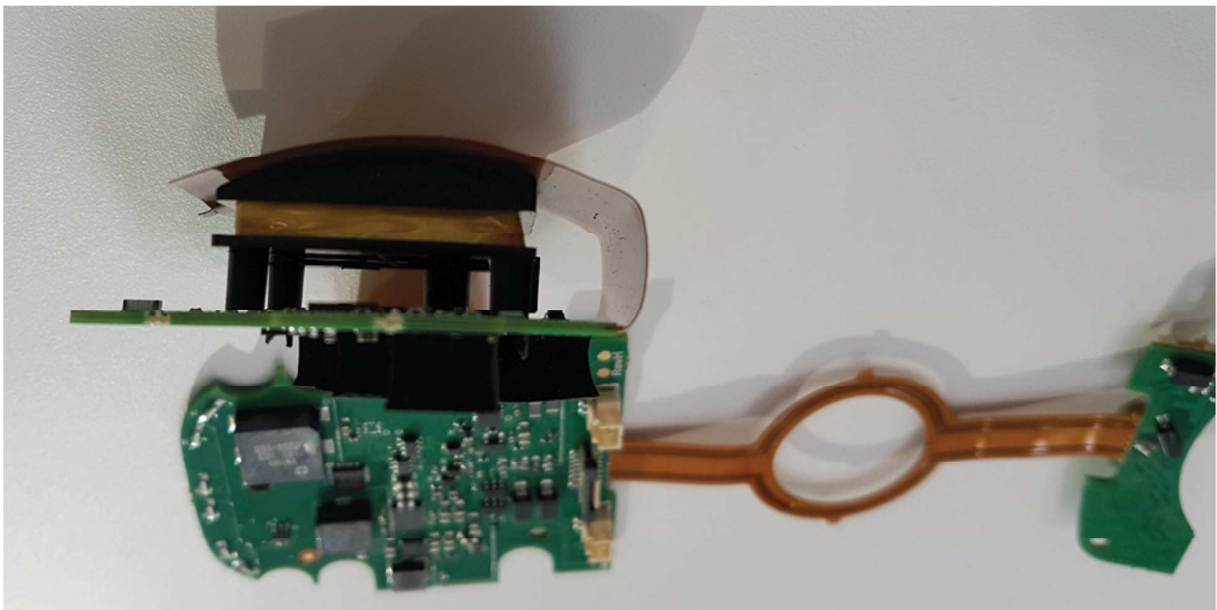


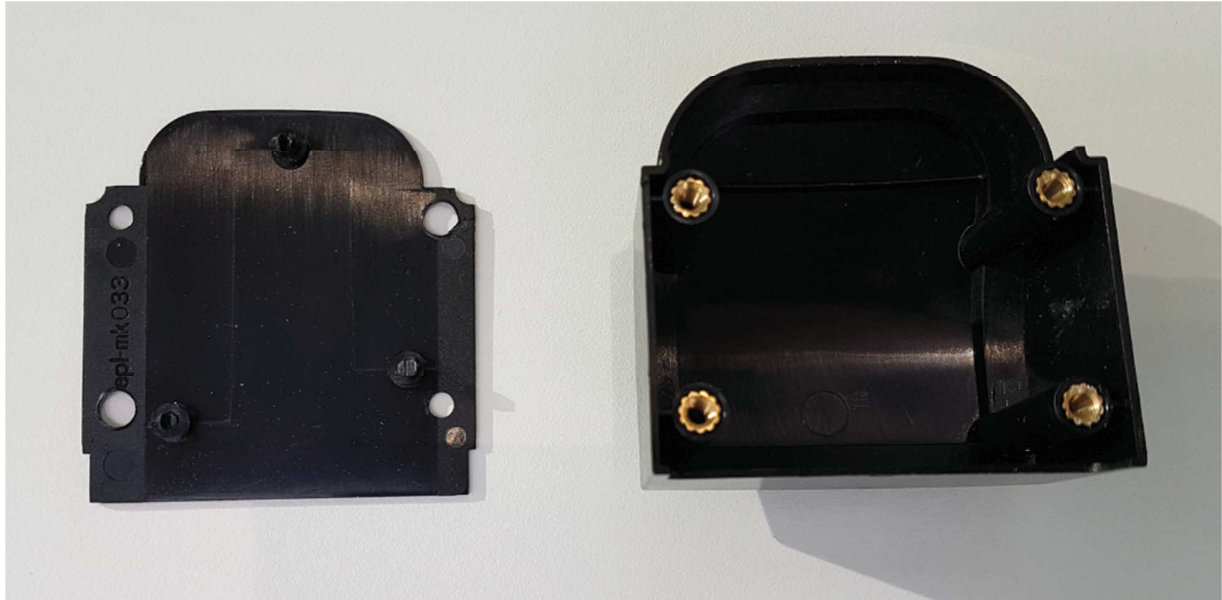
Figure 10 – Close up view of rear of Radio Module removed from main housing



**Figure 11 – Underside view of flexible PCB of Radio Module removed from main housing**



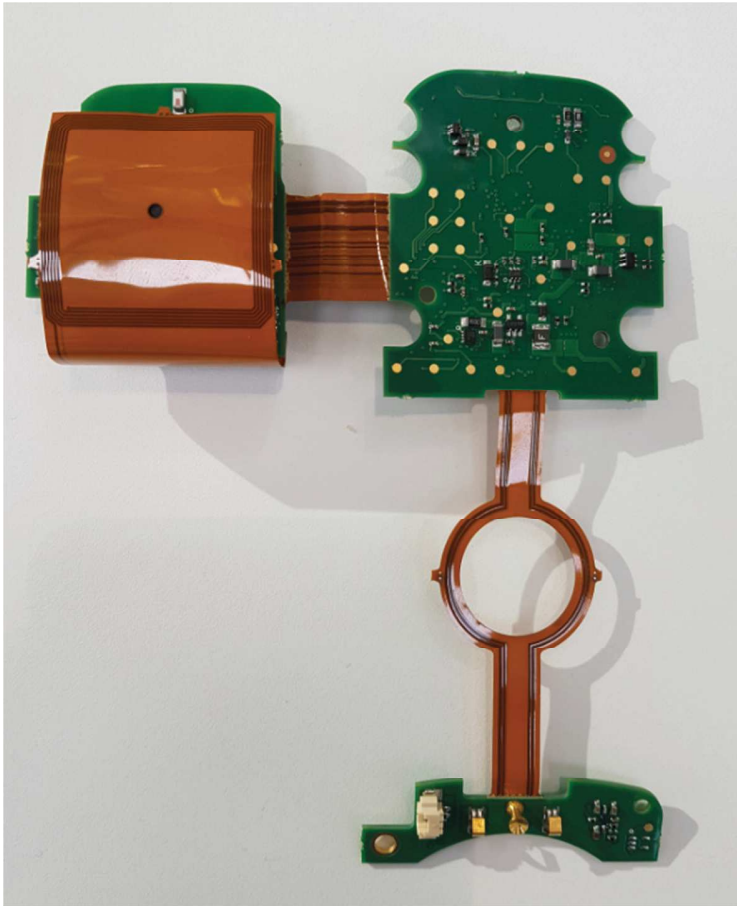
**Figure 12 – Side view of flexible PCB of Radio Module removed from main housing**



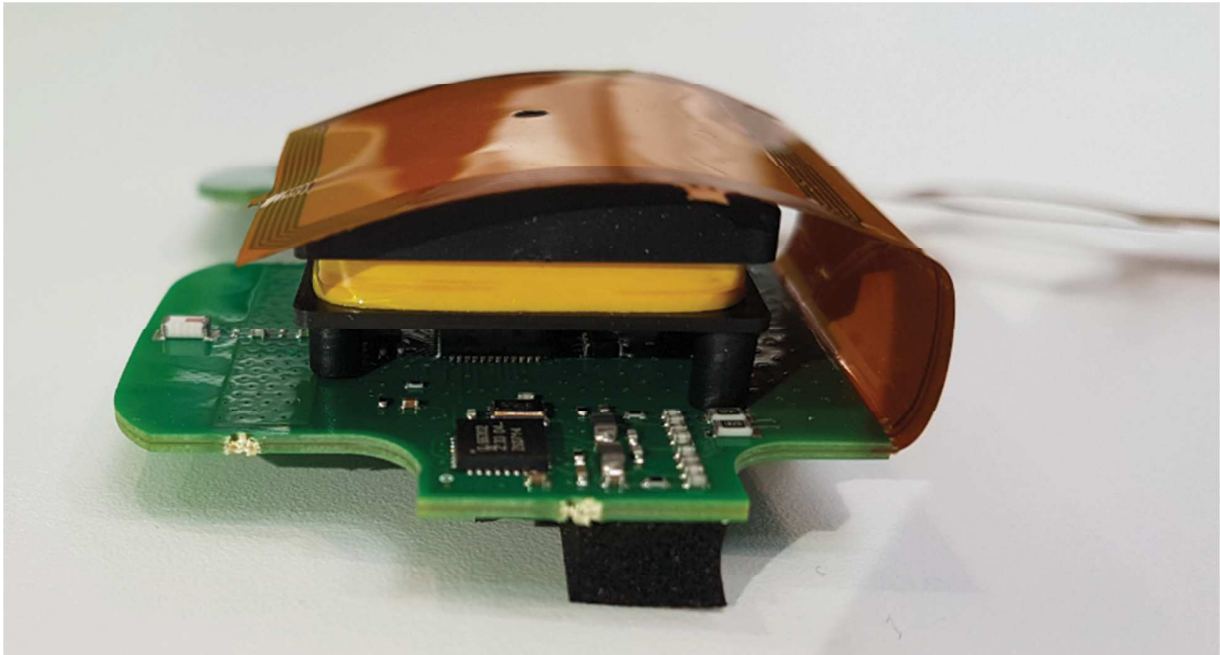
**Figure 13 –Rear view of Radio Module cover removed from main housing and PCB**



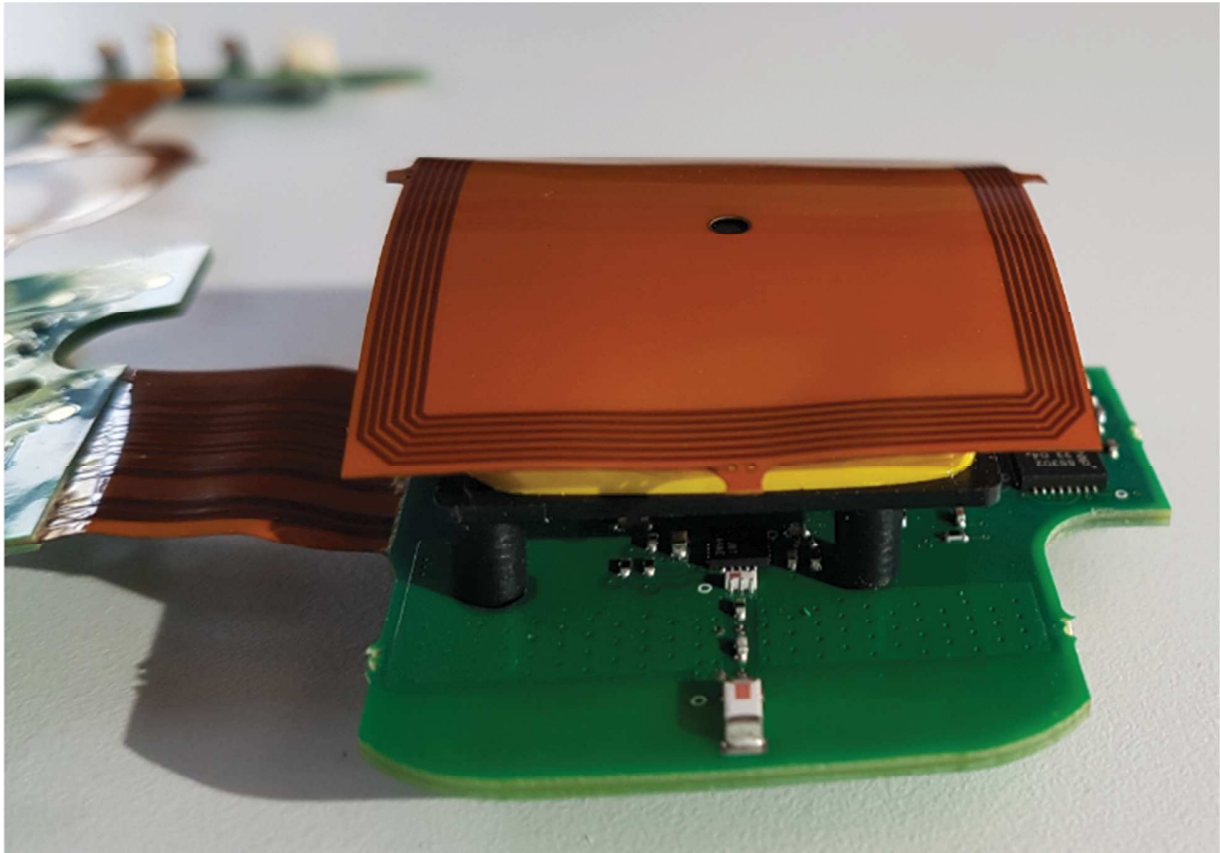
**Figure 14 –Front view of Radio Module cover removed from main housing and PCB**



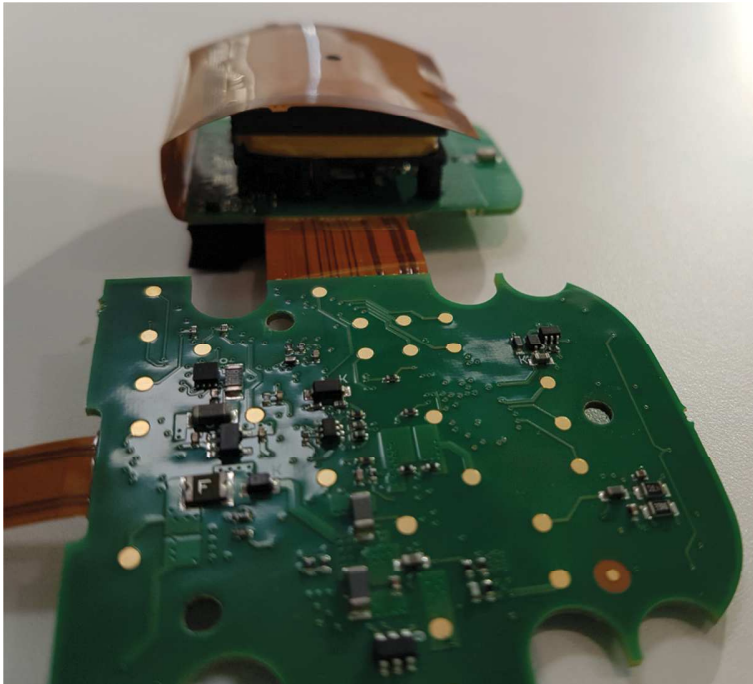
**Figure 15 –Front view of Radio Module and flexible PCB with radio coil**



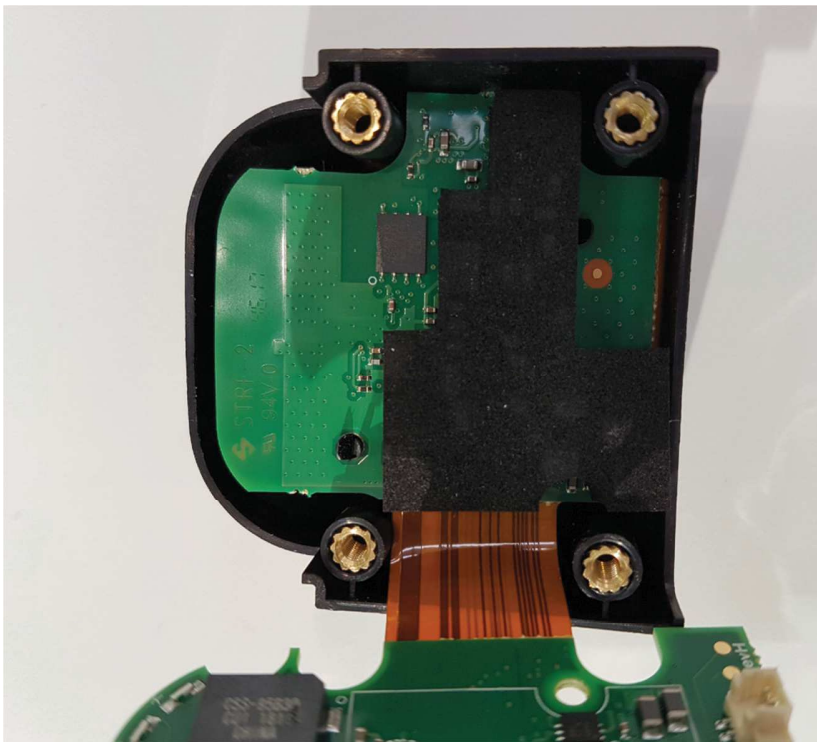
**Figure 16 –Side view of Radio Module and flexible PCB with radio coil**



**Figure 17 –Side view of Radio Module and flexible PCB with radio coil**



**Figure 18 –Close up view of Radio Module and flexible PCB with radio coil**

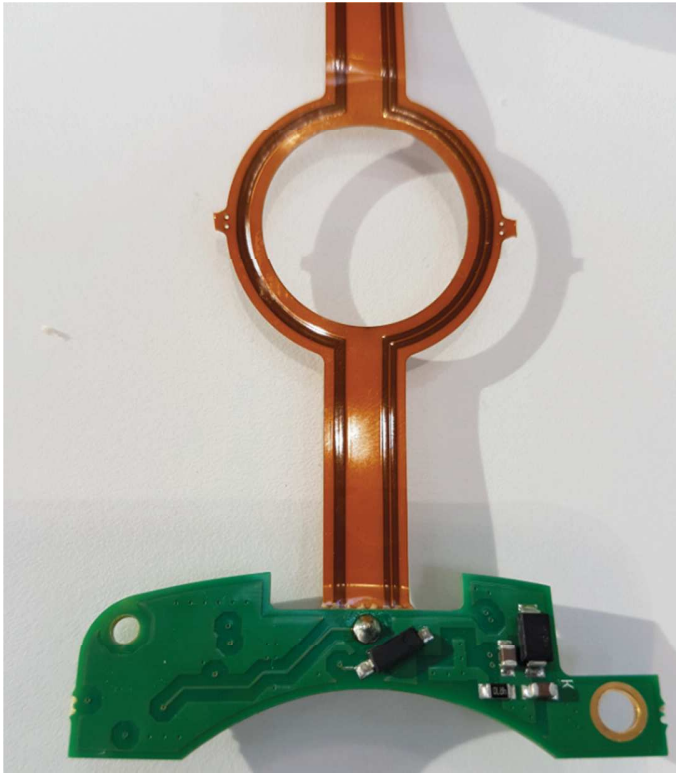


**Figure 19 –Close up view of Radio Module and flexible PCB with Plastic housing**

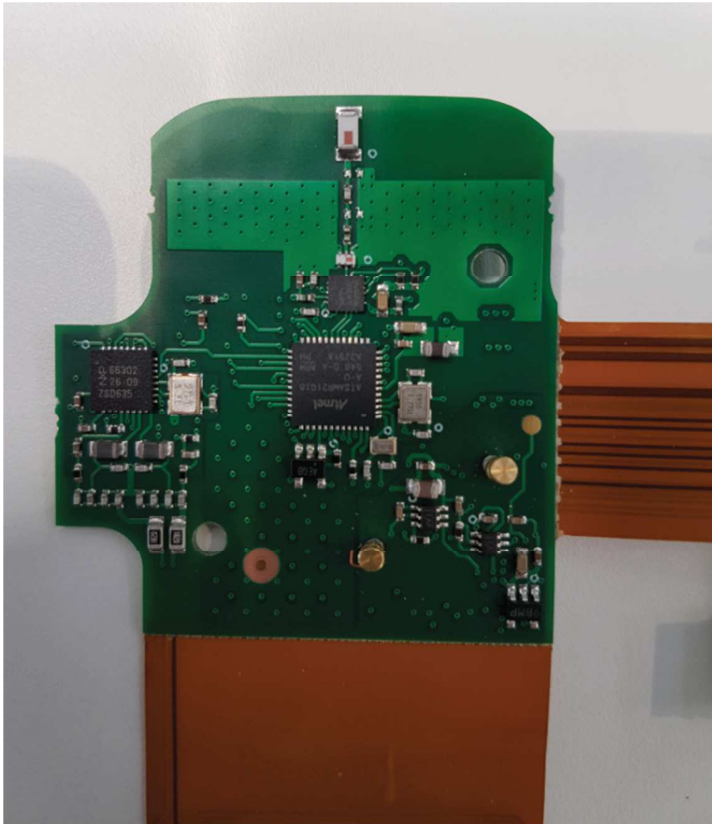




**Figure 20 –Radio Module and Coil**



**Figure 21 –End of Flexible PCB**



**Figure 21 –Front view of Radio Module main PCB**



**Figure 22 –Rear view of Radio Module coil housing opened out from main PCB**

**SECURE SIDE**



**Figure 3 – Inside housing view**



**Figure 4 – Front view with Battery compartment and PCB**



**Figure 5 – Front view battery cover removed**