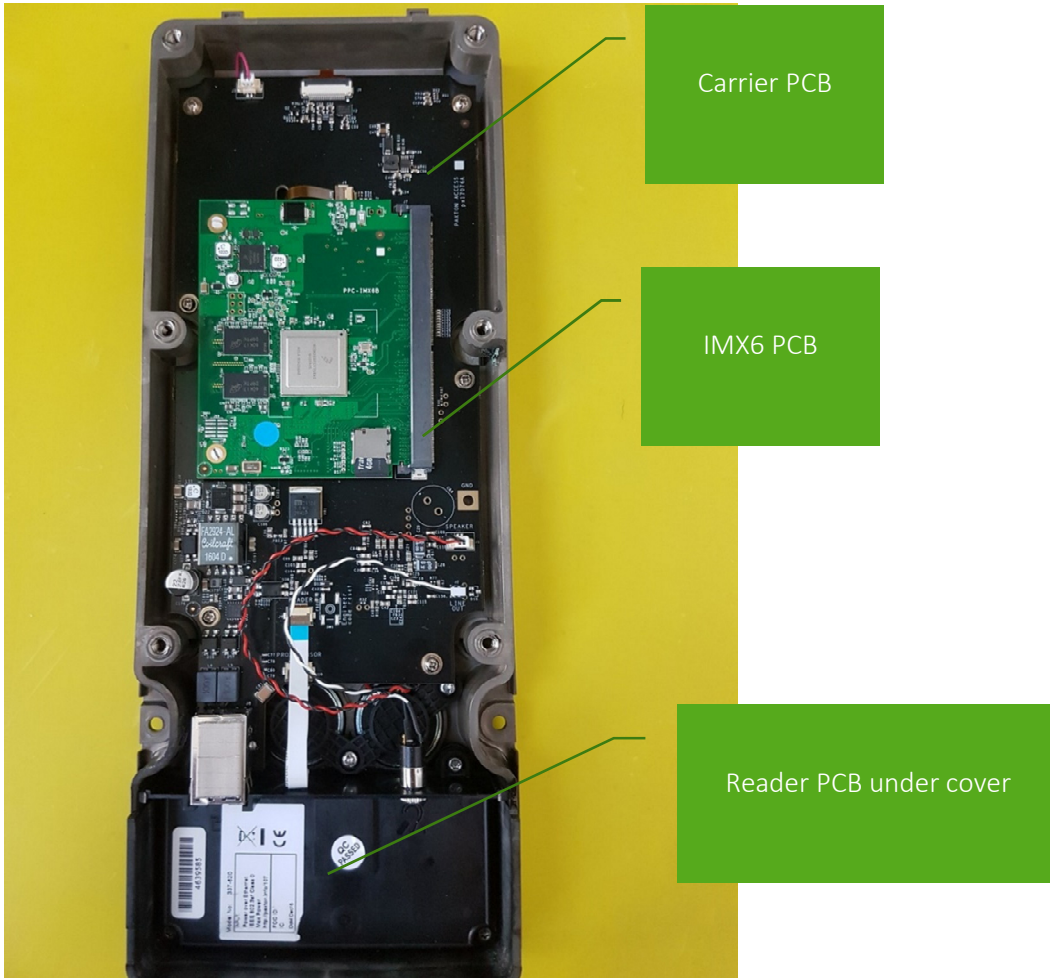


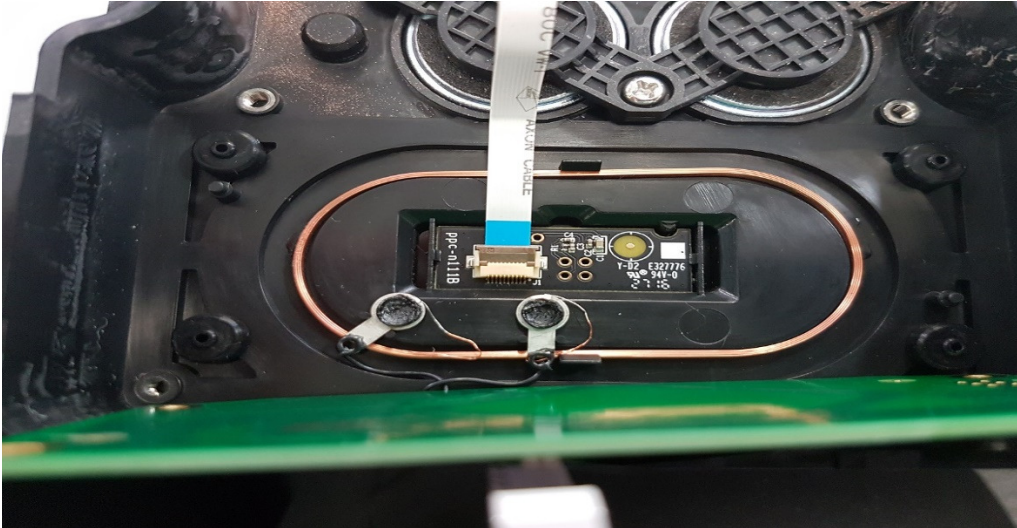
# Touch Panel Internal Photos



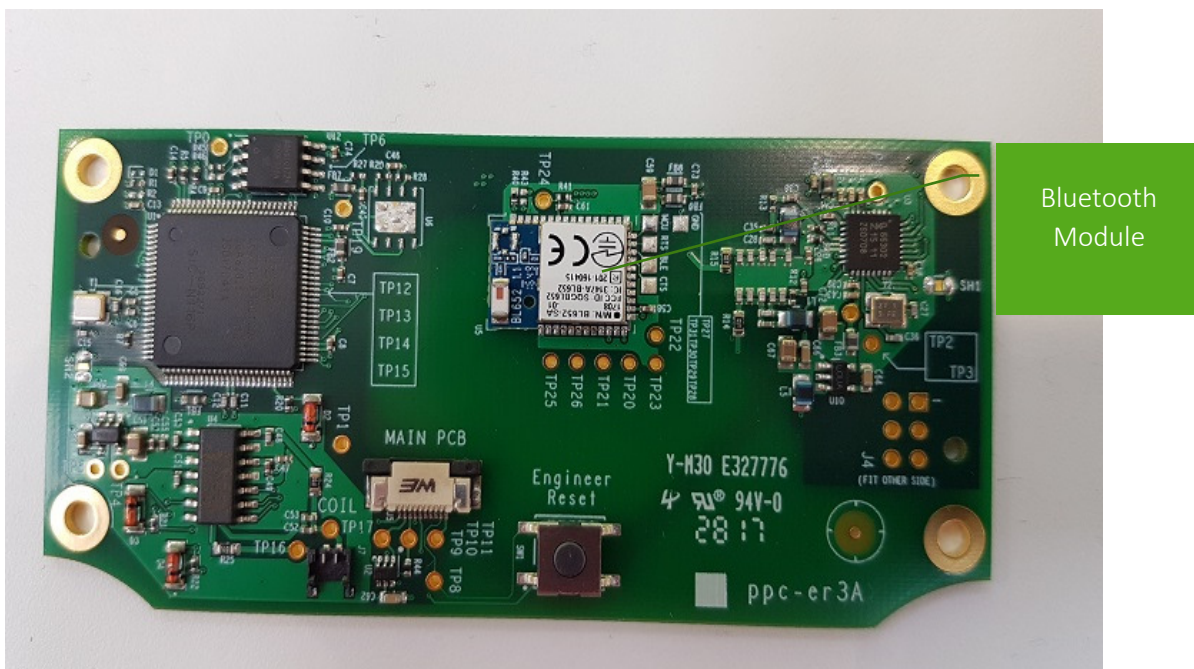
Touch Panel with back cover removed



With Carrier PCB Removed

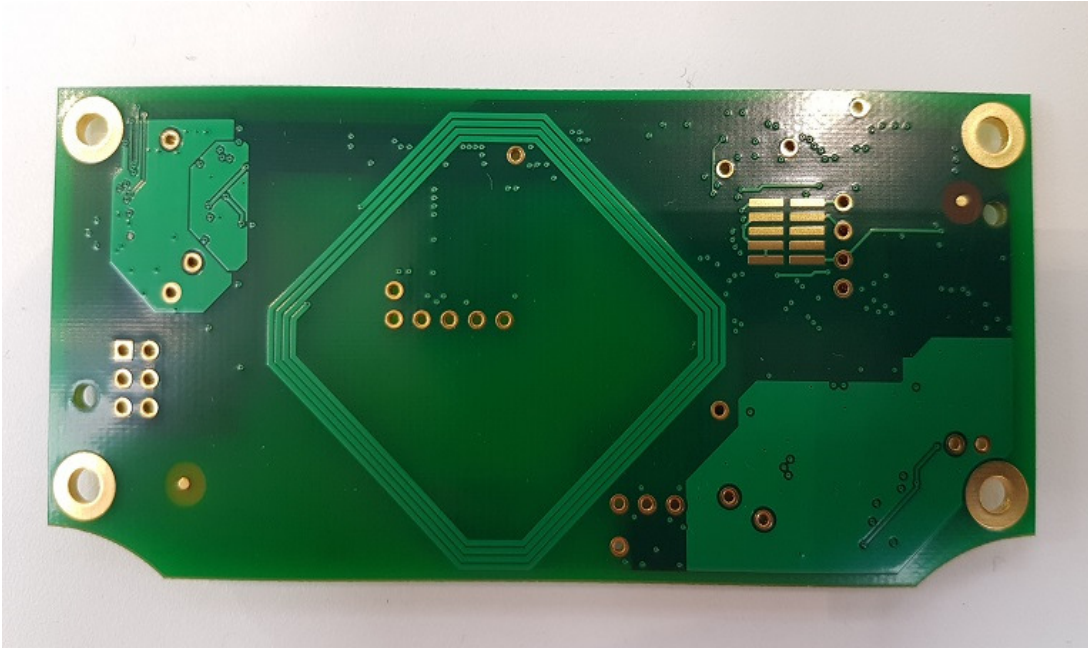


Reader PCB removed showing sensor PCB

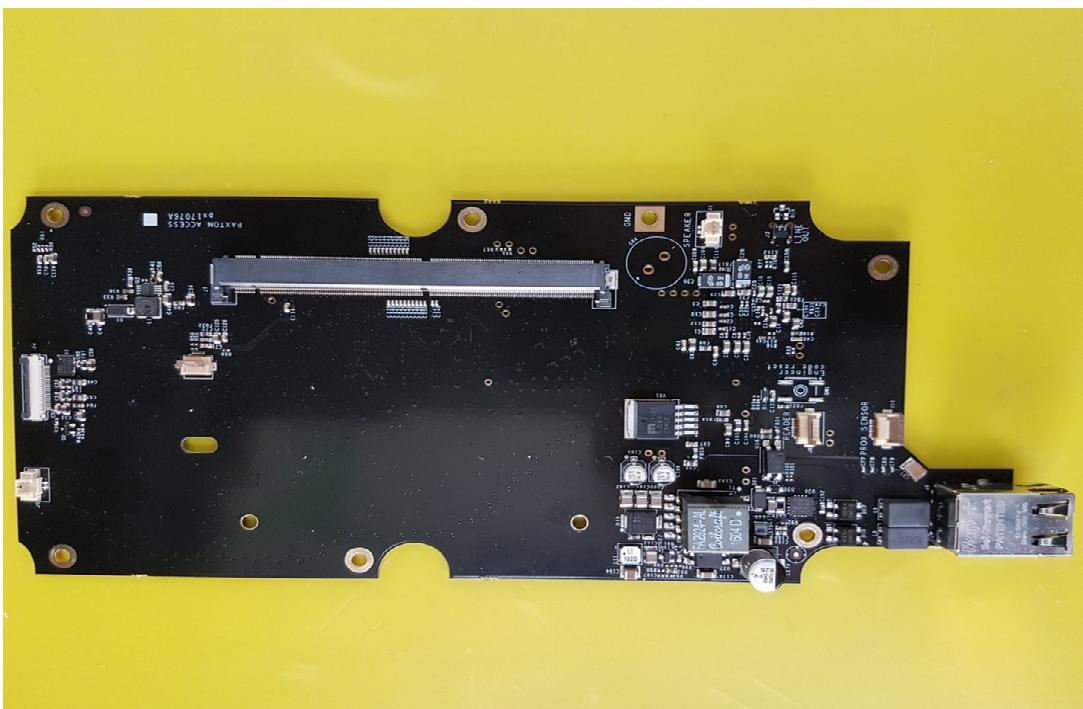


Reader PCB Top View

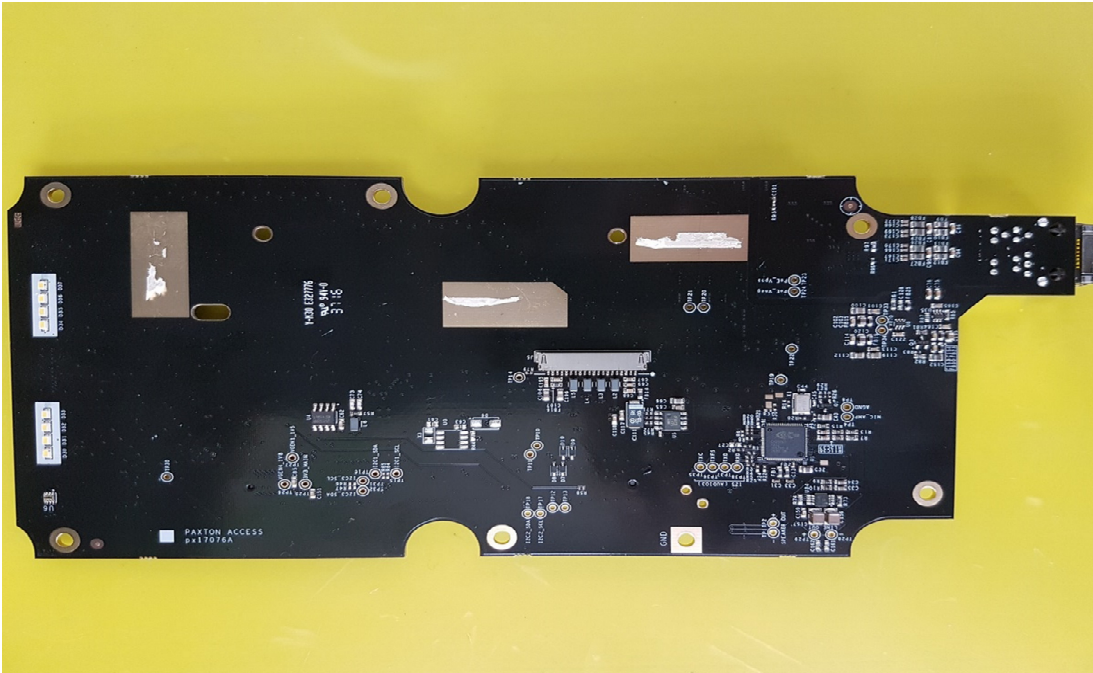




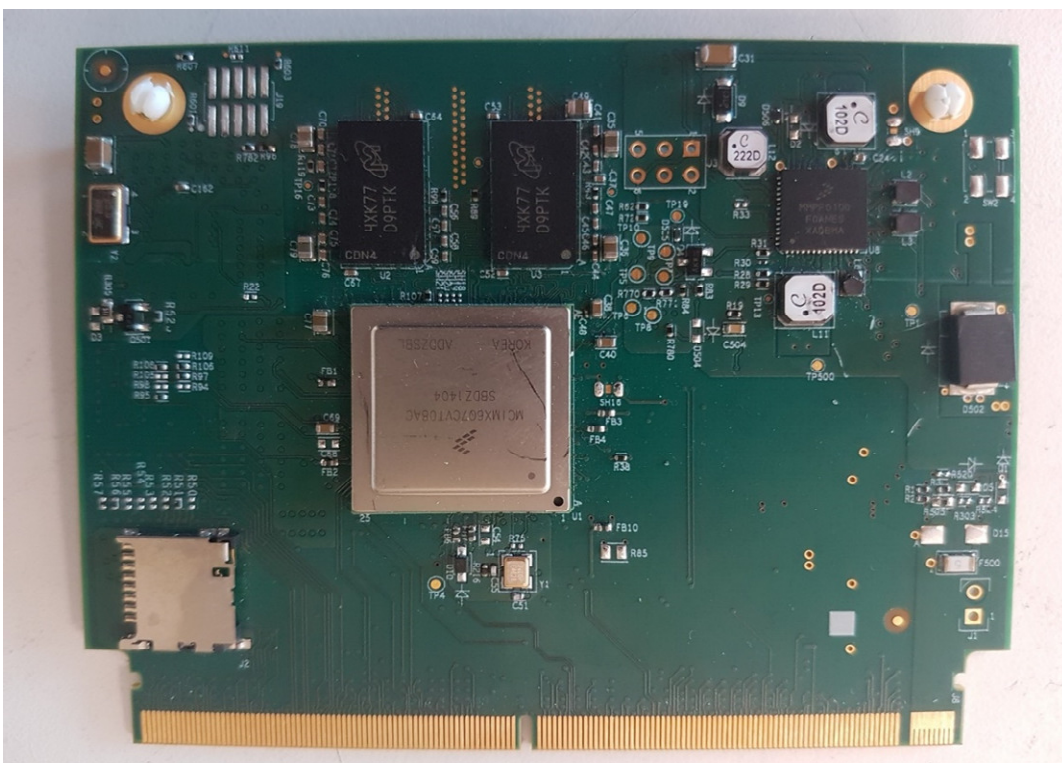
Reader PCB Bottom View



Carrier PCB Top View

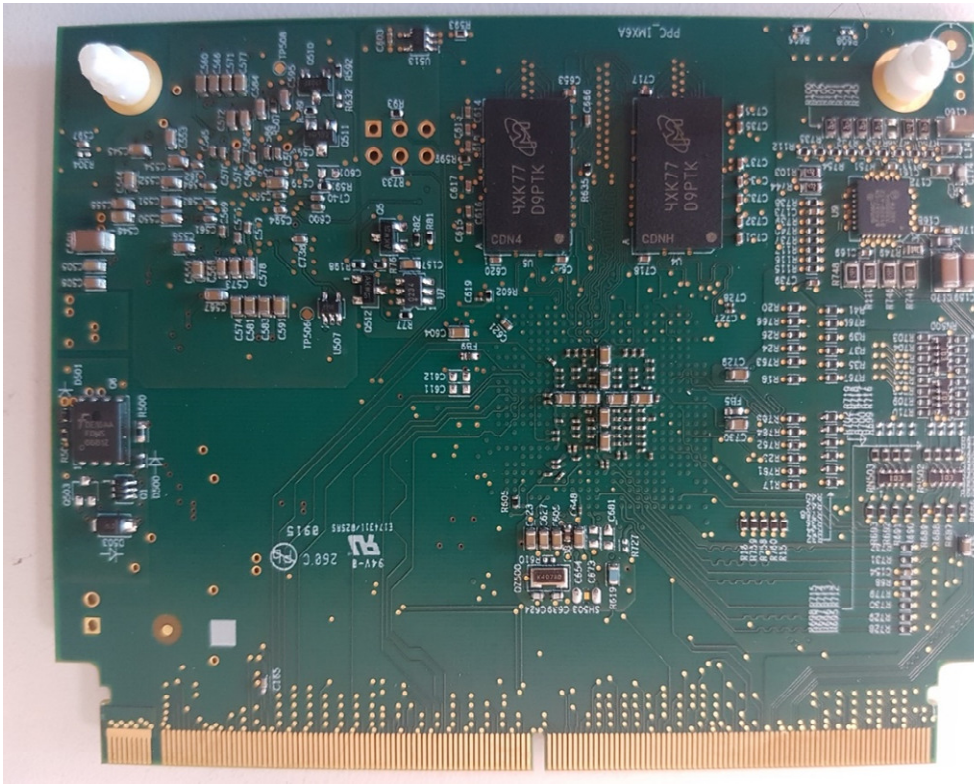


Carrier PCB Bottom View

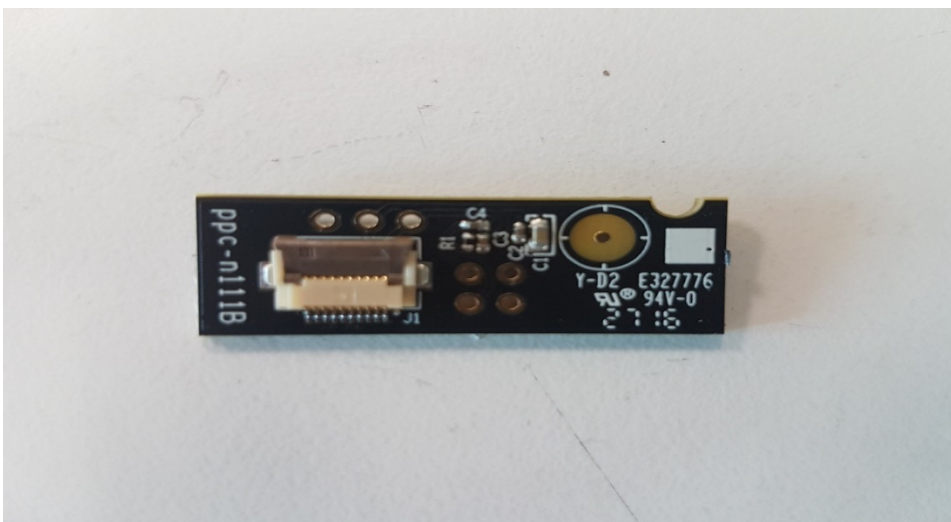


IMX6 PCB Top View





IMX6 Bottom View



Sensor PCB Top View



Sensor PCB Bottom View