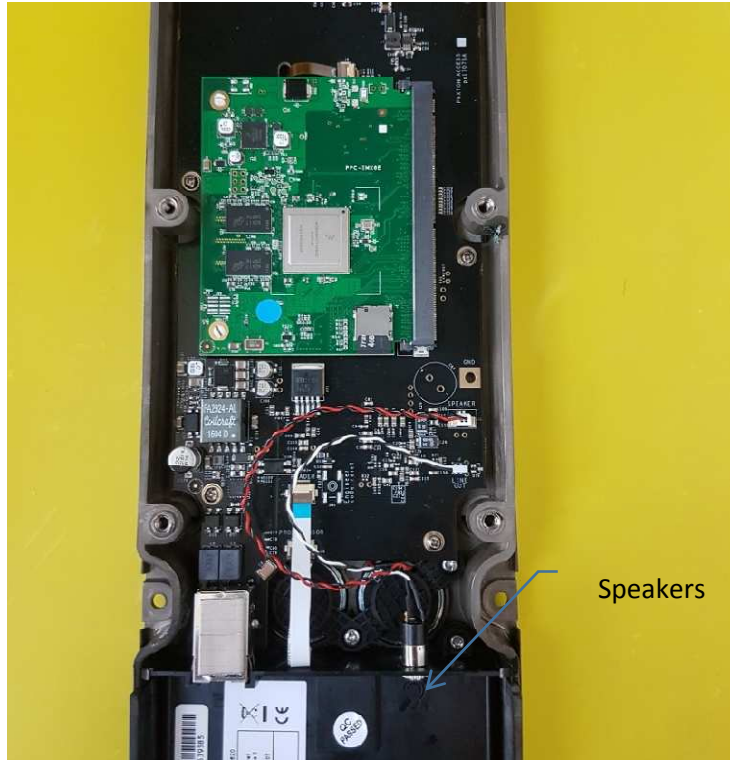


Internal Photos
For
Net2 Entry Touchpanel

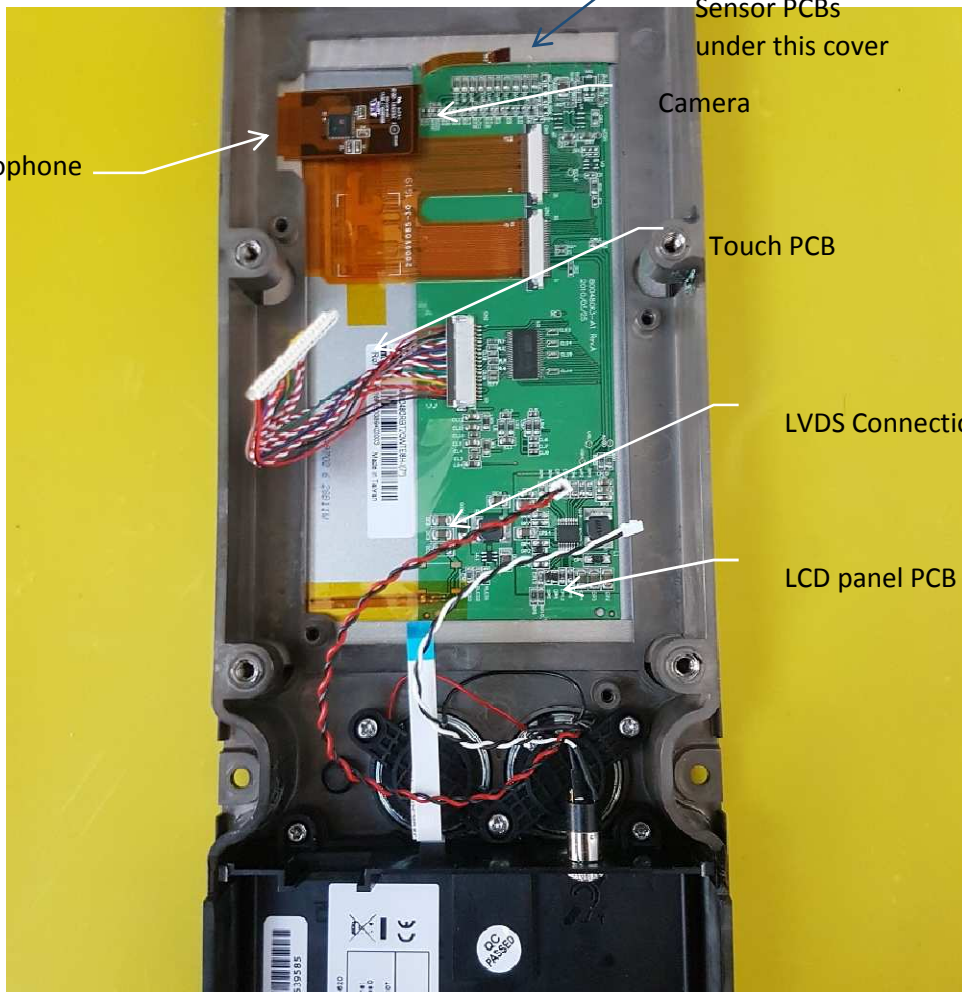


Original Author	Walter Riche
Creation Date	December 2016
Status	Rev 1.0



Speakers

Back Panel Removed



Reader and Sensor PCBs under this cover

Camera

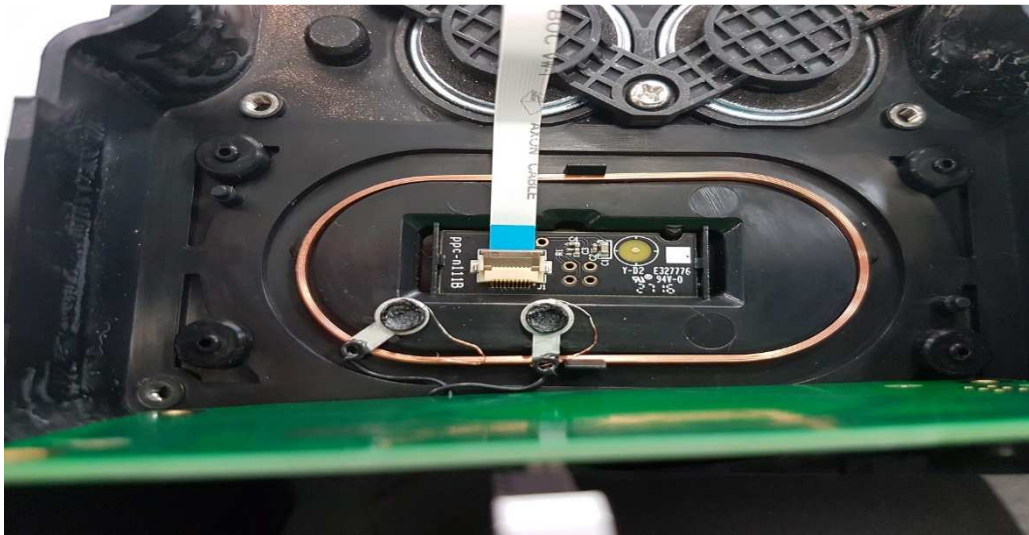
Microphone

Touch PCB

LVDS Connection

LCD panel PCB

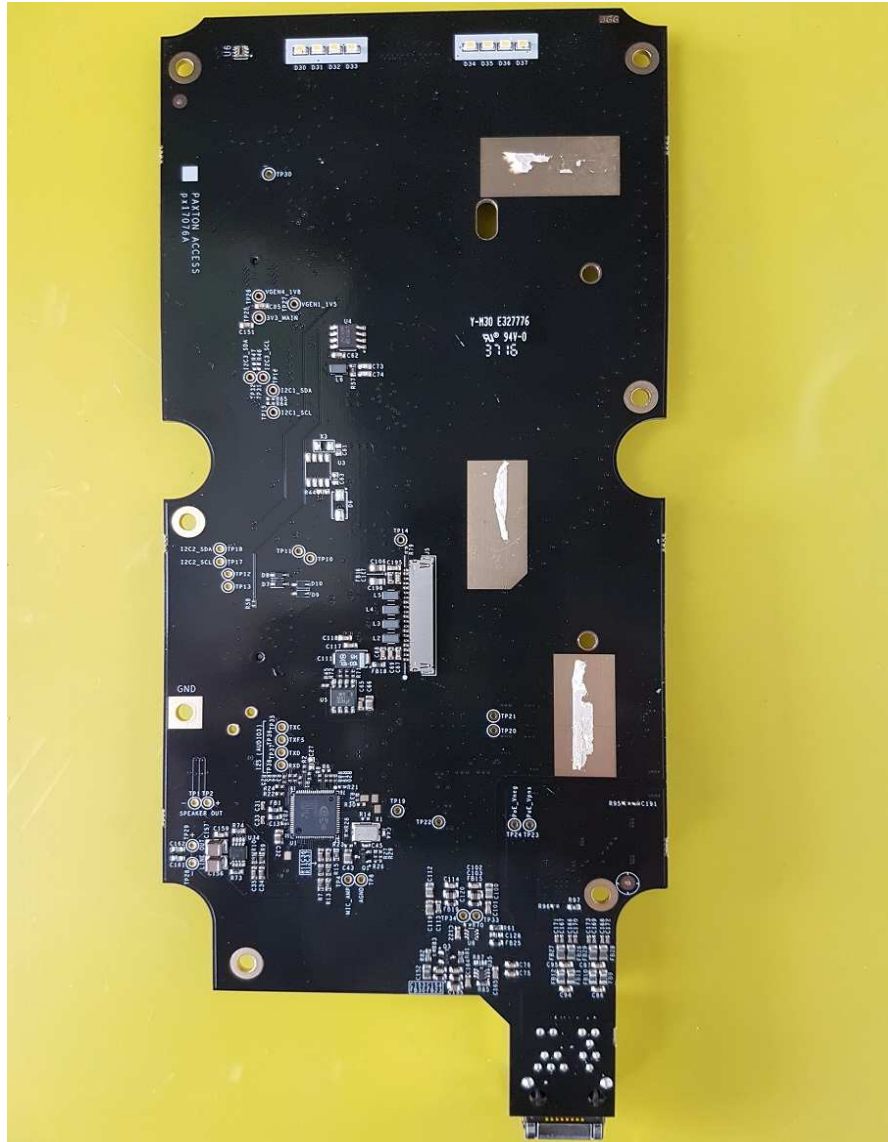
Carrier PCB Removed



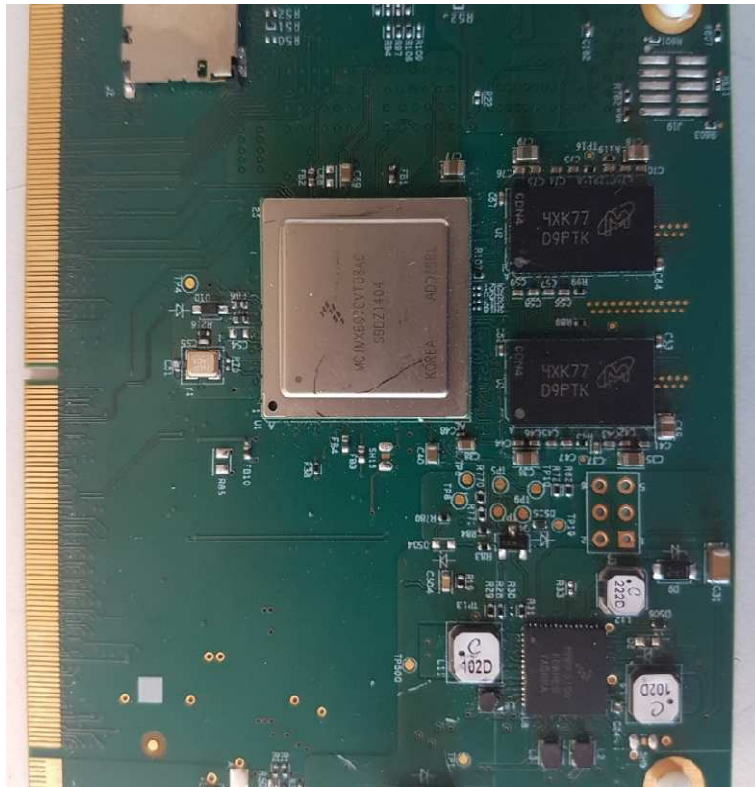
Reader PCB removed showing Antenna and Sensor PCB



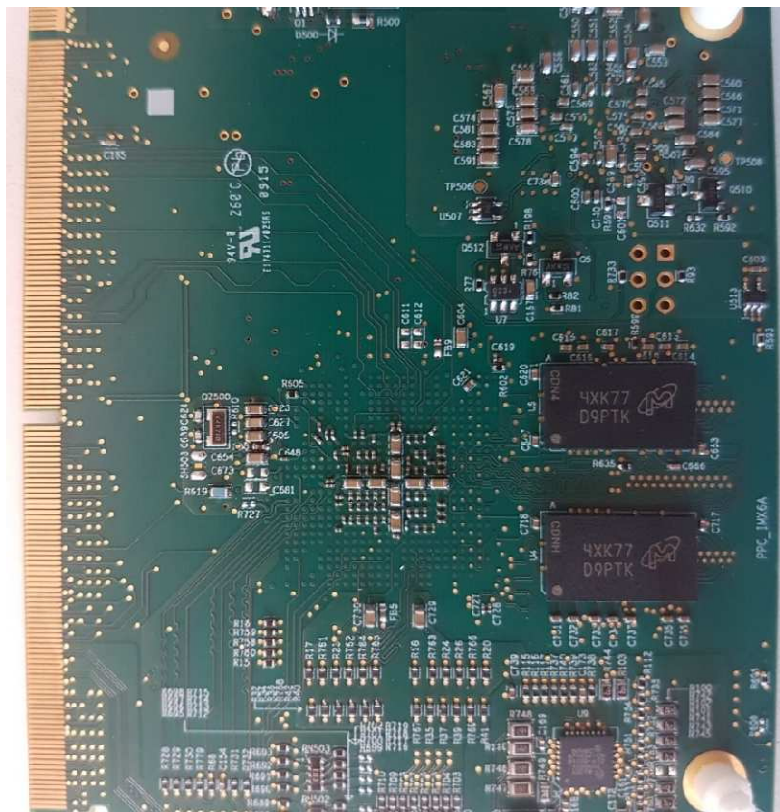
Carrier PCB Top View



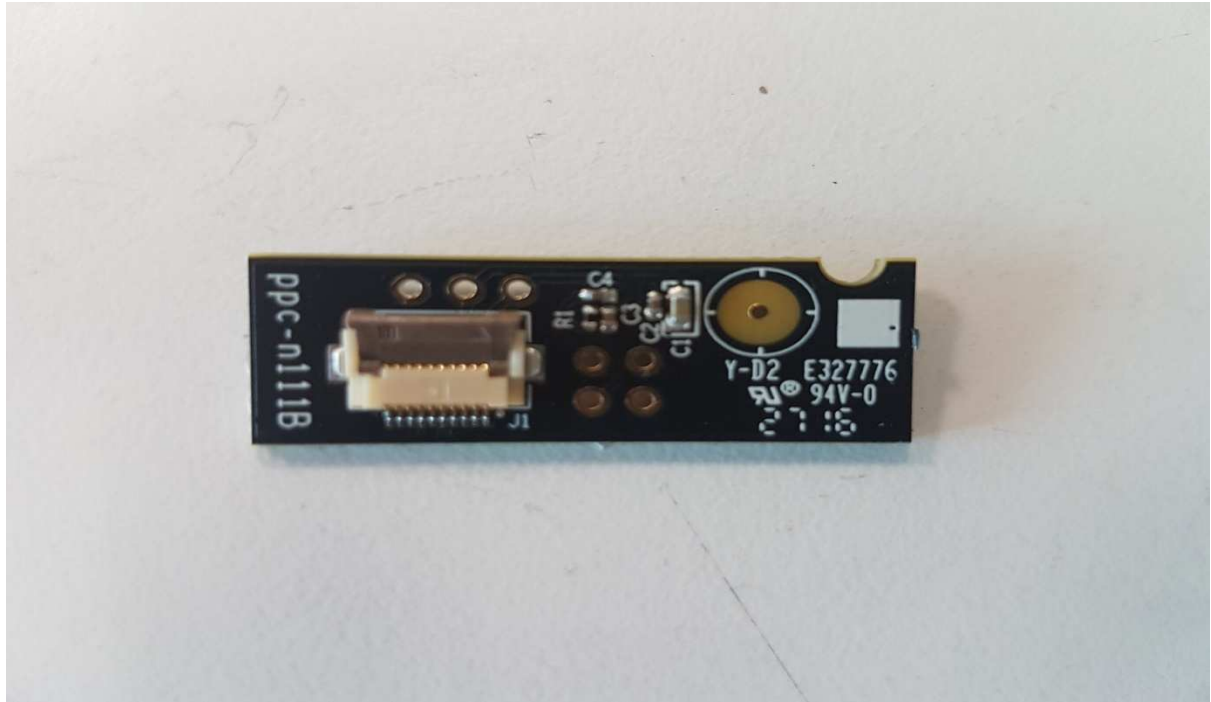
Carrier PCB Bottom View



iMx6 PCB – Top View



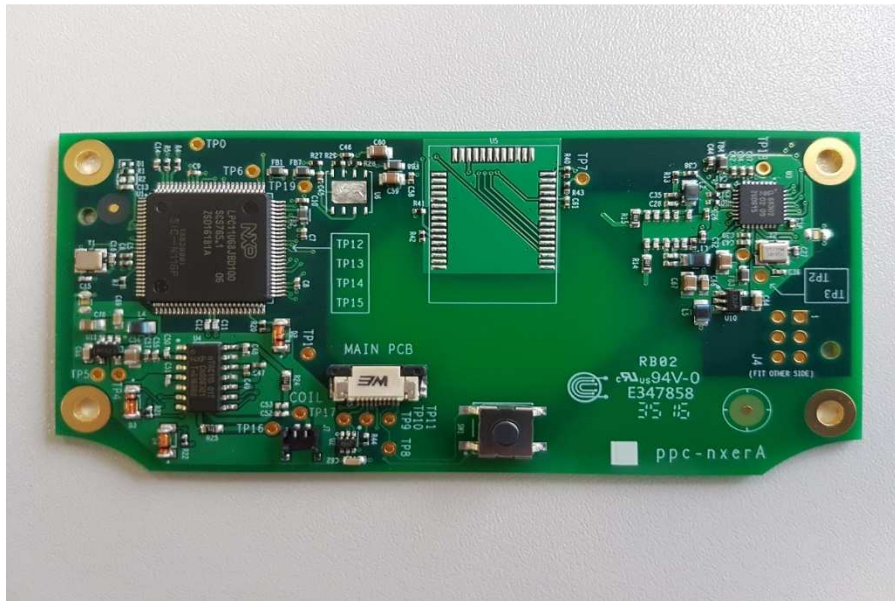
iMx6 PCB – Bottom View



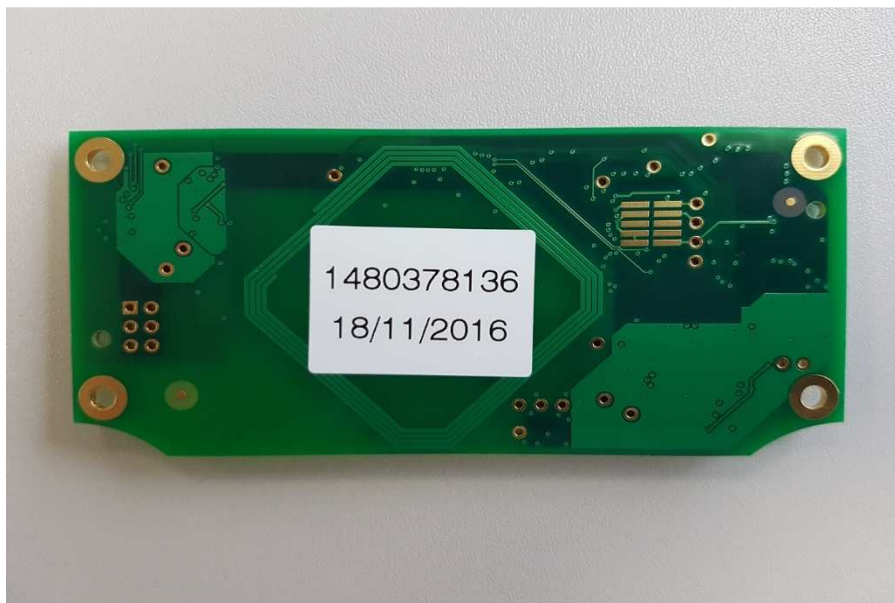
Sensor PCB – Top View



Sensor PCB – Bottom View



Reader PCB – Top View



Reader PCB – Bottom View