

APPENDIX C (DIPOLE VALIDATION)

Test Laboratory: HCT CO., LTD.
 Ambient Temperature: 21.4 °C
 Test Date: Aug. 20, 2009

DUT: HAC-Dipole 835 MHz; Type: D835V3; Serial:1024

Communication System: CW; Frequency: 835 MHz; Duty Cycle: 1:1
 Medium parameters used: $\sigma = 0$ mho/m, $\epsilon_r = 1$; $\rho = 1000$ kg/m³
 Phantom section: E Dipole Section ; Measurement SW: DASY4, V4.7 Build 71; Postprocessing SW: SEMCAD, V1.8 Build 176

DASY4 Configuration:

- Probe: ER3DV6 - SN2343; ConvF(1, 1, 1); Calibrated: 2009-05-22
- Sensor-Surface: (Fix Surface)
- Electronics: DAE3 Sn466; Calibrated: 2009-07-21
- Phantom: HAC Test Arch; Type: SD HAC P01 BA

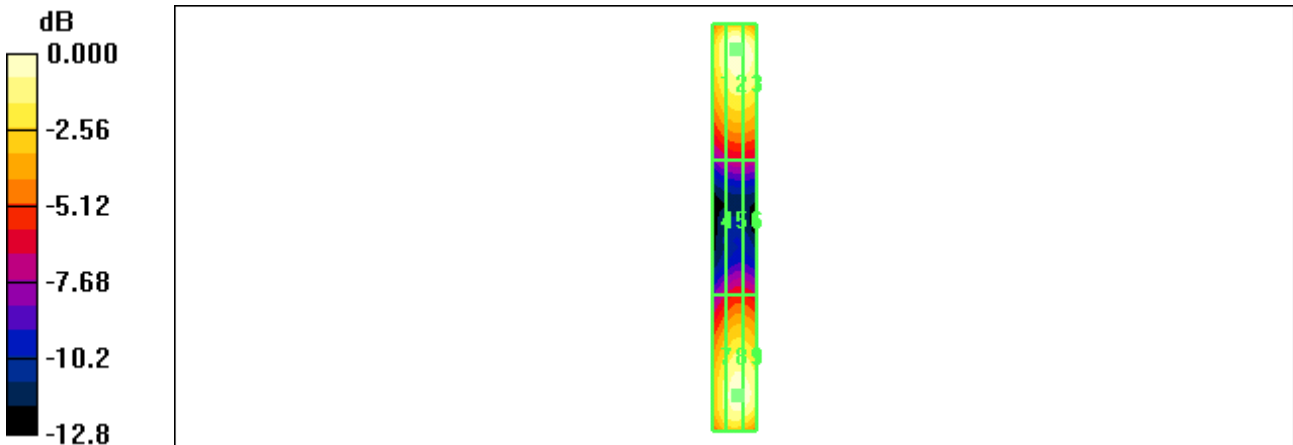
E Scan 10mm above CD 835 MHz/Hearing Aid Compatibility Test (41x361x1): Measurement grid: dx=5mm, dy=5mm
 Maximum value of peak Total field = 169.5 V/m
 Probe Modulation Factor = 1.00
 Device Reference Point: 0.000, 0.000, 354.7 mm
 Reference Value = 131.6 V/m; Power Drift = -0.019 dB
Hearing Aid Near-Field Category: M4 (AWF 0 dB)

Peak E-field in V/m

Grid 1	Grid 2	Grid 3
158.6 M4	169.5 M4	167.4 M4
Grid 4	Grid 5	Grid 6
78.7 M4	86.3 M4	85.9 M4
Grid 7	Grid 8	Grid 9
150.3 M4	163.8 M4	162.8 M4

Cursor:

Total = 169.5 V/m
 E Category: M4
 Location: -1, -79, 365.8 mm



0 dB = 169.5V/m

Test Laboratory: HCT CO., LTD.
 Ambient Temperature: 21.4 °C
 Test Date: Aug. 20, 2009

DUT: HAC Dipole 1880 MHz; Type: CD1880V3; Serial:1019

Communication System: CW; Frequency: 1880 MHz; Duty Cycle: 1:1
 Medium parameters used: $\sigma = 0$ mho/m, $\epsilon_r = 1$; $\rho = 1000$ kg/m³
 Phantom section: E Device Section ; Measurement SW: DASY4, V4.7 Build 71; Postprocessing SW: SEMCAD, V1.8 Build 176

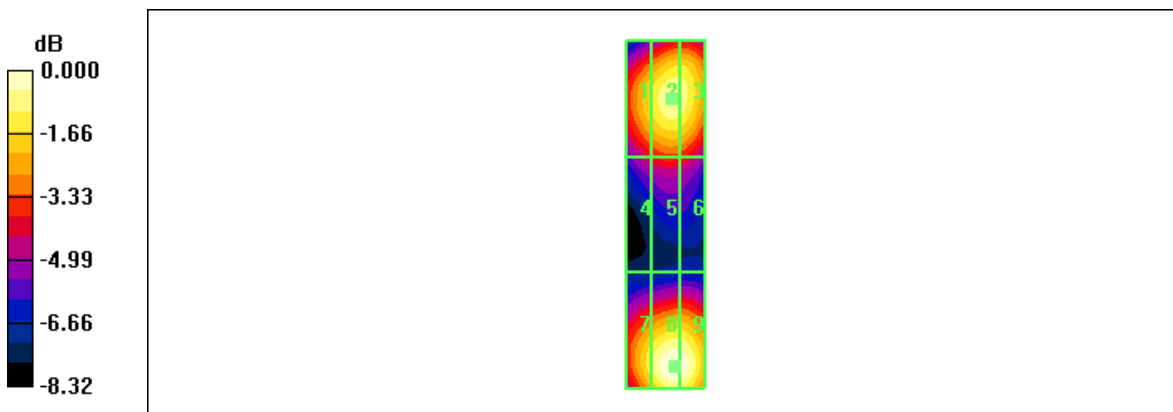
DASY4 Configuration:
 - Probe: ER3DV6 - SN2343; ConvF(1, 1, 1); Calibrated: 2009-05-22
 - Sensor-Surface: (Fix Surface)
 - Electronics: DAE3 Sn466; Calibrated: 2009-07-21
 - Phantom: HAC Test Arch; Type: SD HAC P01 BA

E Scan 10mm above CD 1880 MHz/Hearing Aid Compatibility Test (41x181x1): Measurement grid: dx=5mm, dy=5mm
 Maximum value of peak Total field = 149.9 V/m
 Probe Modulation Factor = 1.00
 Device Reference Point: 0.000, 0.000, 353.7 mm
 Reference Value = 78.8 V/m; Power Drift = -0.022 dB
Hearing Aid Near-Field Category: M2 (AWF 0 dB)

Peak E-field in V/m

Grid 1	Grid 2	Grid 3
126.7 M2	139.1 M2	138.0 M2
Grid 4	Grid 5	Grid 6
94.2 M3	100.6 M3	99.0 M3
Grid 7	Grid 8	Grid 9
132.5 M2	149.9 M2	149.1 M2

Cursor:
 Total = 149.9 V/m
 E Category: M2
 Location: -2.5, 39, 364.8 mm



0 dB = 149.9V/m

Test Laboratory: HCT CO., LTD.
 Ambient Temperature: 21.4 °C
 Test Date: Aug. 20, 2009

DUT: HAC-Dipole 835 MHz; Type: D835V3; Serial: 1024

Communication System: CW; Frequency: 835 MHz; Duty Cycle: 1:1
 Medium parameters used: $\sigma = 0$ mho/m, $\epsilon_r = 1$; $\rho = 1$ kg/m³
 Phantom section: H Dipole Section ; Measurement SW: DASY4, V4.7 Build 71; Postprocessing SW: SEMCAD, V1.8 Build 176

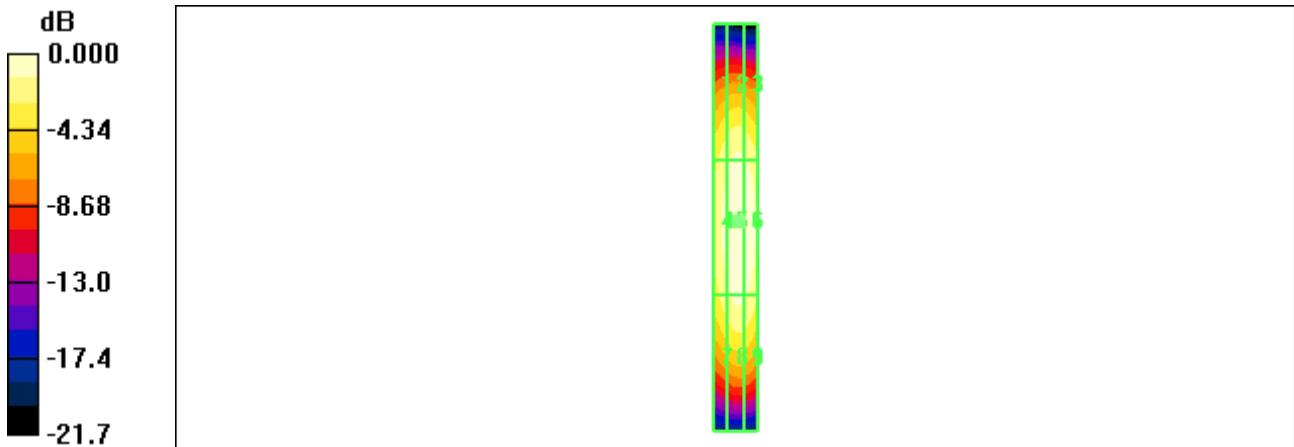
DASY4 Configuration:
 - Probe: H3DV6 - SN6101; ; Calibrated: 2009-05-22
 - Sensor-Surface: (Fix Surface)
 - Electronics: DAE3 Sn466; Calibrated: 2009-07-21
 - Phantom: HAC Test Arch; Type: SD HAC P01 BA

H Scan 10mm above CD 835 MHz/Hearing Aid Compatibility Test (41x361x1): Measurement grid: dx=5mm, dy=5mm
 Maximum value of peak Total field = 0.459 A/m
 Probe Modulation Factor = 1.00
 Device Reference Point: 0.000, 0.000, 354.7 mm
 Reference Value = 0.576 A/m; Power Drift = -0.028 dB
Hearing Aid Near-Field Category: M4 (AWF 0 dB)

Peak H-field in A/m

Grid 1	Grid 2	Grid 3
0.373 M4	0.403 M4	0.396 M4
Grid 4	Grid 5	Grid 6
0.422 M4	0.459 M4	0.452 M4
Grid 7	Grid 8	Grid 9
0.372 M4	0.407 M4	0.400 M4

Cursor:
 Total = 0.459 A/m
 H Category: M4
 Location: -1.5, -2.5, 366.6 mm



0 dB = 0.459A/m

Test Laboratory: HCT CO., LTD.
 Ambient Temperature: 21.4 °C
 Test Date: Aug. 20, 2009

DUT: HAC Dipole 1880 MHz; Type: CD1880V3; Serial:1019

Communication System: CW; Frequency: 1880 MHz; Duty Cycle: 1:1
 Medium parameters used: $\sigma = 0$ mho/m, $\epsilon_r = 1$; $\rho = 1$ kg/m³
 Phantom section: H Dipole Section ; Measurement SW: DASY4, V4.7 Build 71; Postprocessing SW: SEMCAD, V1.8 Build 176

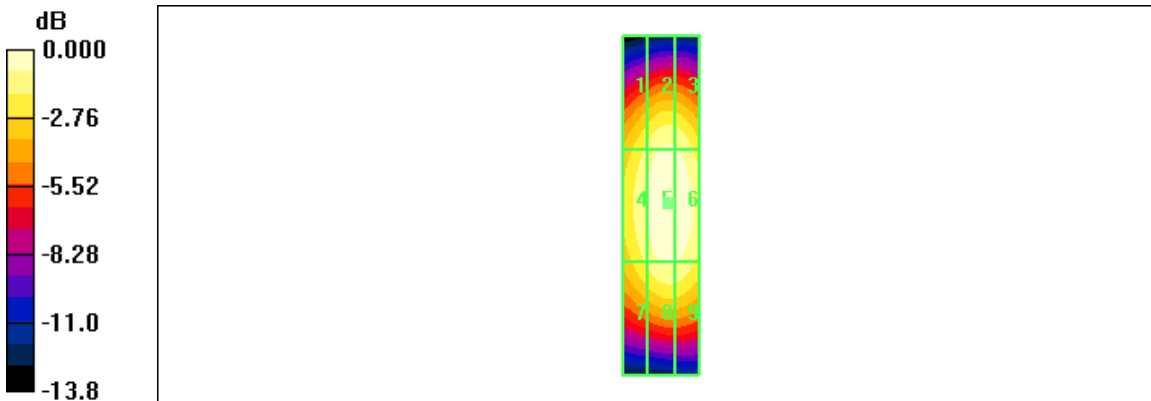
DASY4 Configuration:
 - Probe: H3DV6 - SN6101; ; Calibrated: 2009-05-22
 - Sensor-Surface: (Fix Surface)
 - Electronics: DAE3 Sn466; Calibrated: 2009-07-21
 - Phantom: HAC Test Arch; Type: SD HAC P01 BA

H Scan 10mm above CD 1880 MHz/Hearing Aid Compatibility Test (41x181x1): Measurement grid: dx=5mm, dy=5mm
 Maximum value of peak Total field = 0.477 A/m
 Probe Modulation Factor = 1.00
 Device Reference Point: 0.000, 0.000, 354.7 mm
 Reference Value = 0.583 A/m; Power Drift = -0.031 dB
Hearing Aid Near-Field Category: M2 (AWF 0 dB)

Peak H-field in A/m

Grid 1	Grid 2	Grid 3
0.396 M2	0.437 M2	0.433 M2
Grid 4	Grid 5	Grid 6
0.435 M2	0.477 M2	0.473 M2
Grid 7	Grid 8	Grid 9
0.395 M2	0.434 M2	0.431 M2

Cursor:
 Total = 0.477 A/m
 H Category: M2
 Location: -2, -0.5, 366.6 mm



0 dB = 0.477A/m