

Rhein Tech Laboratories, Inc.
360 Herndon Parkway
Suite 1400
Herndon, VA 20170
<http://www.rheintech.com>

Client: HandEra, Inc.
Model #: PHRPAD40
Standard: FCC 15.247
FCC ID: URZ-WF10030
Report #: 2012195

Appendix H: Manual

Please refer to the following pages.



Phreesia™

The Patient Check-in Company

installation guide

Before you begin
you must call
Phreesia at:

1-855-842-4234

PhreesiaPad Installation in 3 Easy Steps

Start: Open the PhreesiaPad Package

Begin by unpacking the equipment provided by Phreesia.

Step 1: Contact Phreesia

In this section you will check in and review practice configuration with Phreesia.

Step 2: Physical Network Setup

In this section you will identify the physical network layout of the Medical Practice from 3 common setups.

Step 3: PhreesiaPad Configuration

In this last section you will turn on and register the PhreesiaPads on the Phreesia network.

1-855-842-4234

support@phreesia.com

www.phreesia.com

Step 1

Contact Phreesia

1.0 Contact Phreesia

1.0.1 If you have not done so already, call Phreesia technical support at [1-855-842-4234](tel:1-855-842-4234).

1.1 Objectives

1.1.1 Your objective is to set up the wireless PhreesiaPads in the waiting area. Placement of the Phreesia router should provide excellent signal coverage for the PhreesiaPads in this area. A 5-port switch is provided in case we need to split an existing Ethernet connection. Once the network is connected and the PhreesiaPads are set up and turned on, please contact Phreesia technical support to proceed with registering the PhreesiaPads and testing.

Step 2

Physical Network Setup

2.0 Common Router Configurations

Use the examples in sections 2.1, 2.2, and 2.3 to determine what will operate best with the practice's existing network.

Below are 3 common configurations that you will observe when you arrive at a practice:

Type1: Practice computer connected to wall jack (Section 2.1)

Type2: Practice computer connected to practice switch (Section 2.2)

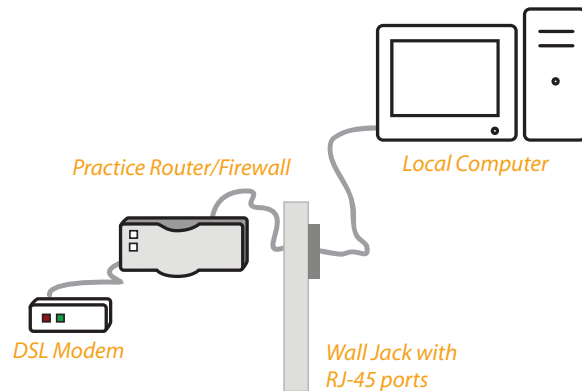
Type3: Practice computer connected to practice router (Section 2.3)

2.1 Type 1 - Router Configuration

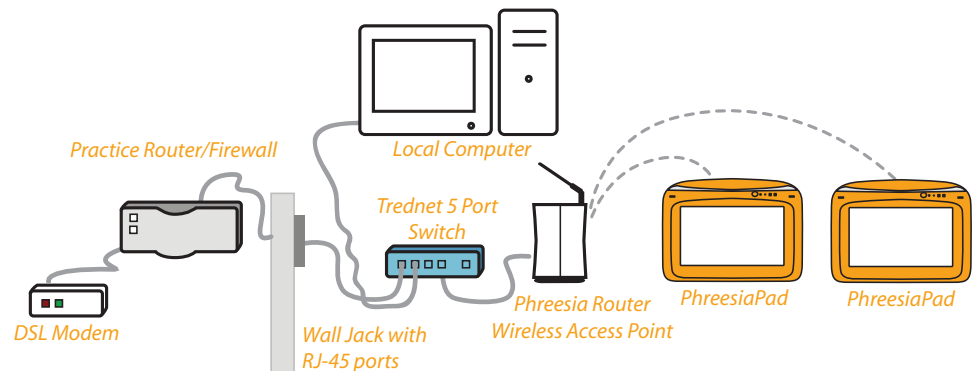
Use this configuration when you have determined that the practice computer connects directly to a wall jack. Make sure to position the router such that there is no x-ray or electromagnetic interference between the router and the waiting room.

FIGURE 2

Before: practice computer to wall jack



After: Phreesia router and switch to wall jack



Step 2

Physical Network Setup

- 2.1.1 Connect the power adapters to the Phreesia Router and the Trendnet switch.
- 2.1.2 Connect the white ethernet cable from Port 1 on the Trendnet switch to the WAN port on the back of the Phreesia Router.
- 2.1.3 Connect the black ethernet cable from Port 2 on the Trendnet switch to the RJ-45 port on the wall jack.
- 2.1.4 Connect the ethernet cable from the computer to Port 3 on the Trendnet switch.

FIGURE 3



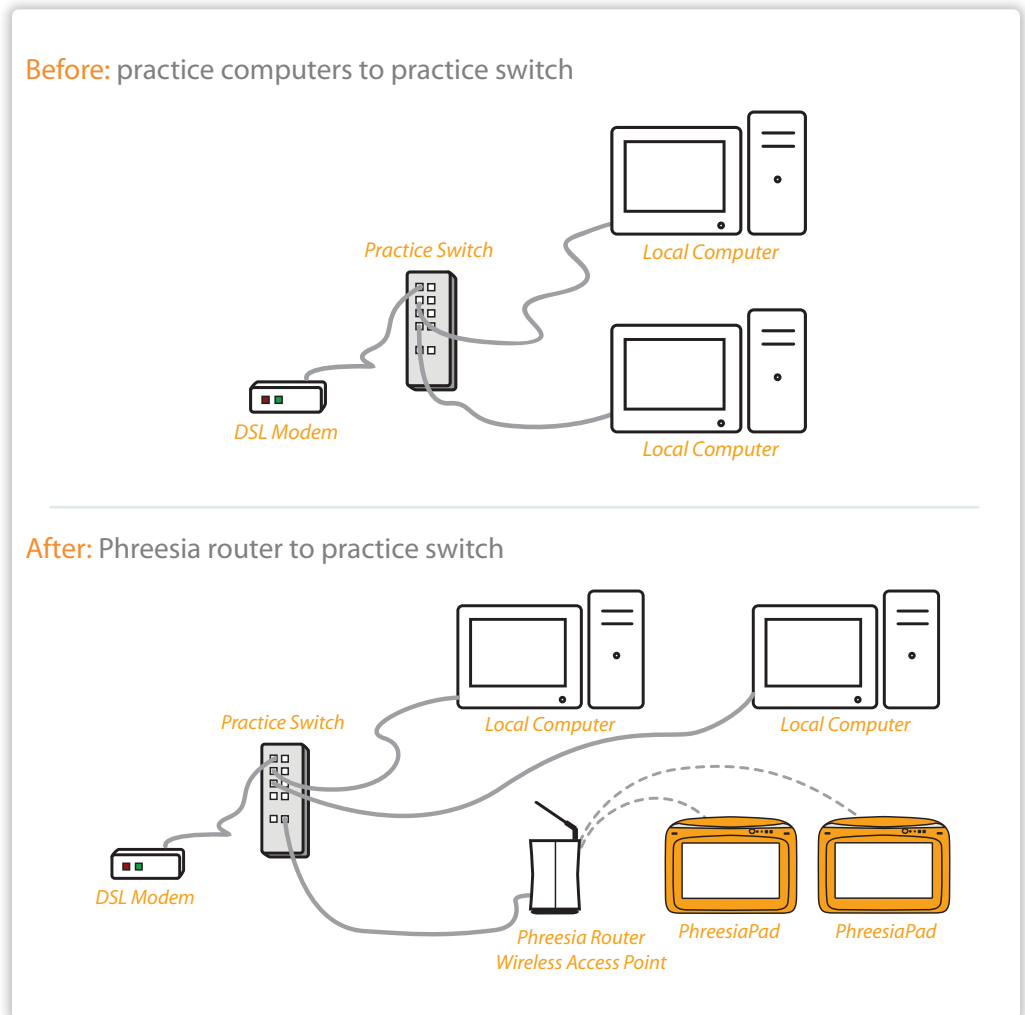
Step 2

Physical Network Setup

2.2 Type 2 - Router Configuration

Use this configuration when you have determined that the practice computer is directly connected to the practice switch. Make sure to position the router so that there is no x-ray or electromagnetic interference between the router and the waiting room.

FIGURE 4



2.2.1 Connect the power adapter to the Phreesia Router.

2.2.2 Connect an ethernet cable from the practice's switch to the WAN port on the Phreesia Router.

FIGURE 5



Step 2

Physical Network Setup

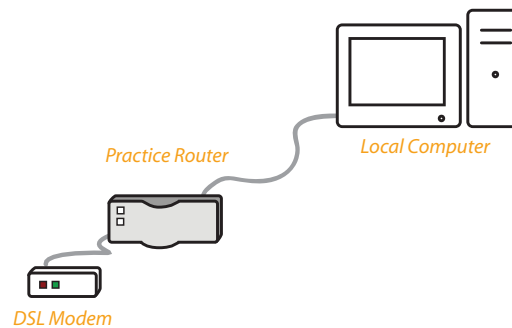
2.3 Type 3 - Router Configuration

This configuration will only be performed with the permission and approval of the practice IT Administrator. You will be supplied with the encryption type, authentication type and the network key from Phreesia's Technical Support team so that you can properly configure the PhreesiaPads to the practice router.

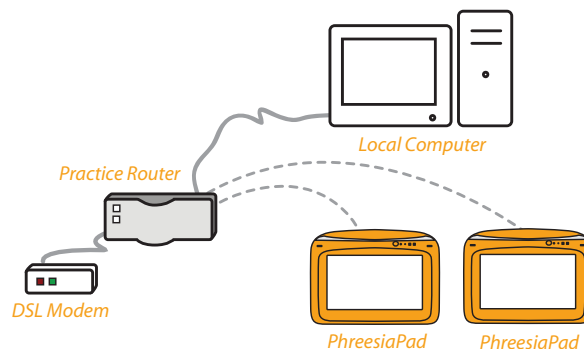
Ensure there is no x-ray or electromagnetic interference between the router and the waiting room.

FIGURE 6

Before: practice computer to practice router



After: PhreesiaPads to practice router

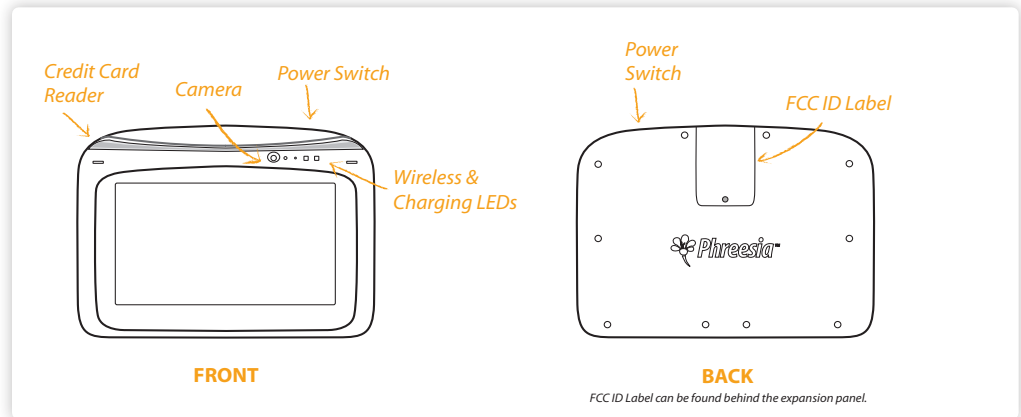


Step 3

PhreesiaPad Configuration

3.0 The PhreesiaPad: Front and Back

FIGURE 7



3.1 Starting up the PhreesiaPad

- 3.1.1 Place the PhreesiaPad into its charging station.
- 3.1.2 Turn on the PhreesiaPad by moving the switch into the ON position (on the top right of the Pad).
- 3.1.3 Run the Configuration Wizard on each PhreesiaPad.

3.2 Run the PhreesiaPad Configuration Wizard

- 3.2.1 When the PhreesiaPad is turned on for the first time, the Configuration Wizard will automatically start. The following screen should appear (Figure 9). Call Technical Support at 1-855-842-4234 to run the PhreesiaPad Configuration Wizard.

FIGURE 9



- 3.2.2 If you are using the pre-configured wireless router shipped to you as part of the Phreesia package, tap the green **NEXT** button located at the bottom right corner of the screen.
- 3.2.3 If you are using a different wireless router or the medical practice's wireless router, see *Appendix B* for instructions on how to switch wireless networks.

Step 3

PhreesiaPad Configuration

NOTE: If the wireless network indicator light on the front of your PhreesiaPad is orange, you must change the wireless network as shown in *Appendix B* before continuing.

NOTE: If you need to change any other network settings, see *Appendix B* for instructions.


Step 3

PhreesiaPad Configuration

3.3 The Phreesia Server Connection

- 3.3.1 The registration URL should not be modified unless a member of the Phreesia Technical Support team instructs you to do so.
- 3.3.2 If your network requires a proxy server to access the internet, select “Use Proxy” and enter the relevant information into the Connection Properties Page:

FIGURE 10



The screenshot shows the 'Connection Properties' configuration screen in the Phreesia application. The Phreesia logo is in the top left, and 'CONFIGURATION' is in the top right. The title 'Connection Properties' is in orange. Below it, the text 'Provide your connection properties below' is displayed. There is a text field for 'Registration Server URL:' containing the URL 'https://www.phreesia.net/phreesiapad/phreesiapadservice.aspx'. Below this is a checkbox labeled 'Use Proxy'. If checked, there would be fields for 'Proxy server address:', 'Proxy port:', 'Proxy User Name:', and 'Proxy Password:'. At the bottom, there are four buttons: 'Wireless' (blue), 'Network' (blue), 'BACK' (red with a left arrow), and 'NEXT' (green with a right arrow).

- 3.3.3 Tap the **NEXT** button.

3.4 Enter your Phreesia Username and Password

- 3.4.1 Enter the username and password that were provided by Phreesia and tap the **NEXT** button. This username and password will also be used to log in to the Practice Portal. If you do not have a username and password, call Phreesia Technical Support at 1-855-842-4234.

FIGURE 11



The screenshot shows the 'Registration' screen in the Phreesia application. The Phreesia logo is in the top left, and 'CONFIGURATION' is in the top right. The title 'Registration' is in orange. Below it, the text 'Enter your Phreesia User ID and password' is displayed. There are two text fields: 'User ID:' and 'Password:'. At the bottom, there is a note: 'Press NEXT to register your PhreesiaPad. This may take several minutes.' Below this note are four buttons: 'Wireless' (blue), 'Network' (blue), 'BACK' (red with a left arrow), and 'NEXT' (green with a right arrow).

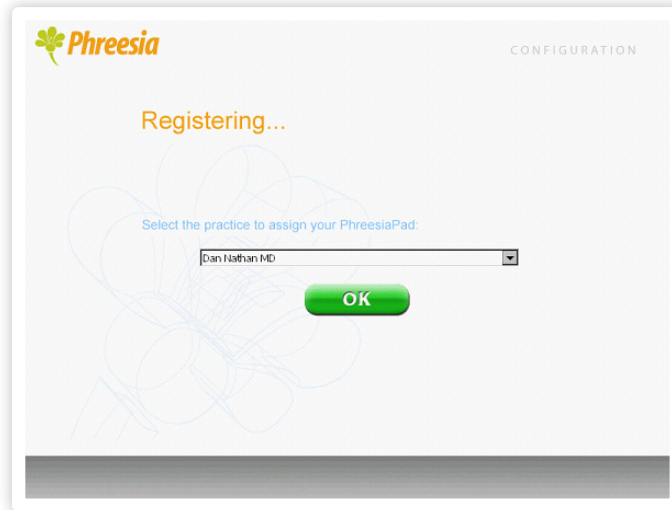
Step 3

PhreesiaPad Configuration

3.5 Select Your practice and Complete Configuration

- 3.5.1 Using the drop-down menu, select the practice in which the PhreesiaPad will be used and tap **OK** (if your practice has multiple locations, select the appropriate one from the drop-down list).

FIGURE 12



3.6 Finish

- 3.6.1 Tap **FINISH**. Once you complete this process, the Phreesia patient interview will load.

3.7 Test Your New PhreesiaPad

- 3.7.1 Call **Phreesia Technical Support at 1-855-842-4234** to initiate a patient interview test.
- 3.7.2 Complete a test patient interview.
- 3.7.3 While completing a test patient interview, walk around the waiting room to test the practice's wireless signal strength. The wireless signal indicator is located at the top right corner of the screen, next to the battery indicator. This indicator has 4 bars which indicate signal strength. (4 bars = excellent signal, 1 bar = very low signal). Record the signal strength and note any variation throughout the waiting room.
- 3.7.4 Confirm that your results print upon completion of the patient interview.
- 3.7.5 Upon completion of the install be sure to get your Unique Installation Code from Phreesia's Technical Support.

Appendix A

Configuring the router for a Static IP address

A.0 Configuring the Router for a Static IP Address

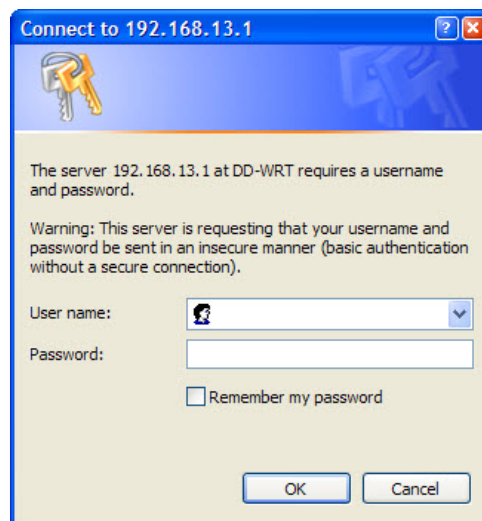
To obtain an available IP address for use with the router, please call Phreesia Technical Support.

A.0.1 Using an available RJ-45 cable, connect Port 1 on the back of the Phreesia router to your laptop.

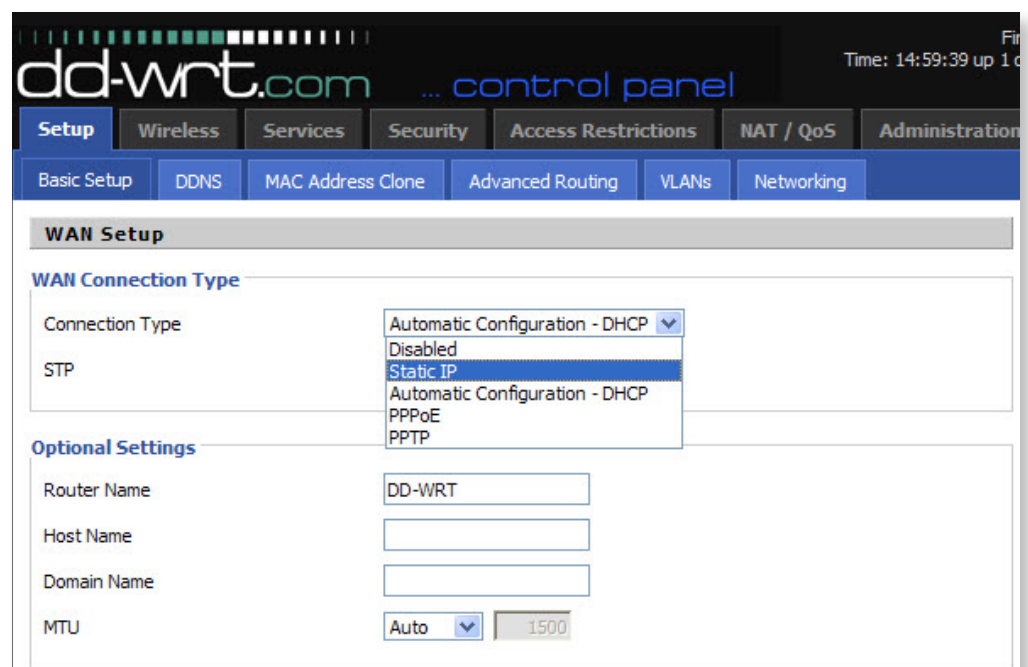
A.0.2 On the Windows desktop, click **Start**, select **Run**, enter **192.168.13.1** and press OK.

This will open the Router Status Screen. Click on the Setup tab to enter the username and password.

A.0.3 For username and password, refer to the checklist under Router Information or call Phreesia Technical Support.



A.0.4 On the Setup page, click on the **Automatic Configuration – DHCP** drop-down menu and select **Static IP** from the list.



Appendix A

Configuring the router for a Static IP address Continued

- A.0.6 Enter the Internet IP Address information that you obtained from Phreesia Technical Support. This includes the IP Address, subnet mask, gateway, DNS1, and DNS2.

dd-wrt.com ... control panel

Time: 15:00:02 up 1 d

Setup Wireless Services Security Access Restrictions NAT / QoS Administration

Basic Setup DDNS MAC Address Clone Advanced Routing VLANs Networking

WAN Setup

WAN Connection Type

Connection Type Static IP

WAN IP Address 192.168.10.154

Subnet Mask 255.255.255.0

Gateway 192.168.10.1

Static DNS 1 192.168.2.100

Static DNS 2 192.168.10.10

Static DNS 3 0.0.0.0

STP ☐ Enable ☒ Disable

Note: the information presented in the diagram above is for illustration purposes

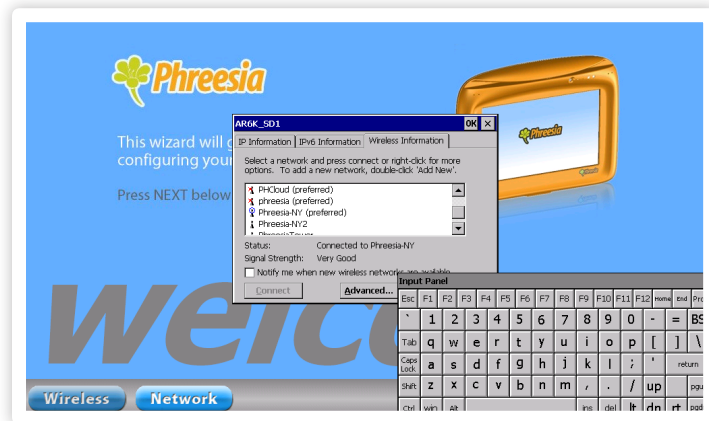
- A.0.7 Scroll to the bottom and click **Save** and then click **Apply Settings**. This will reboot the router.

Appendix B

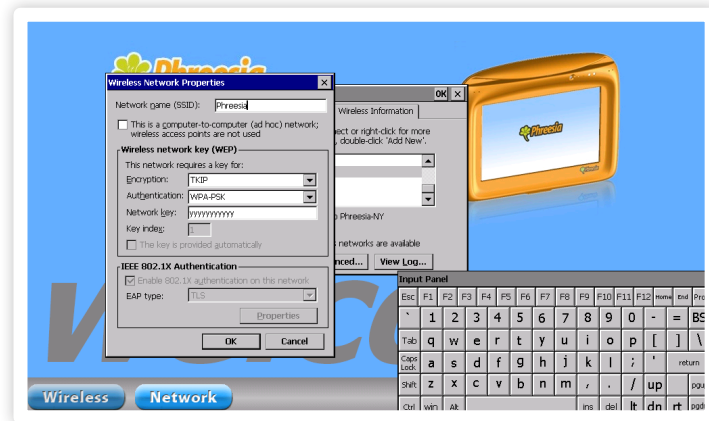
Changing Wireless Networks

B.0 Changing Wireless Networks

- B.0.1 If you are using the practice's wireless router, or the practice's wireless network indicator light is orange, you will need to change the wireless network settings. To do this, tap the blue **WIRELESS** button at the bottom left corner of the screen. The following screen will appear:



- B.0.2 Select the wireless network you wish to connect to from the list and tap **CONNECT**. The following screen will appear:
- B.0.3 If the wireless network you have chosen is encrypted, you must enter a password into the box labeled "Network Key", using the on-screen keyboard.



Note: The password for the Phreesia network will be supplied by a member of their Technical Support Team if required.

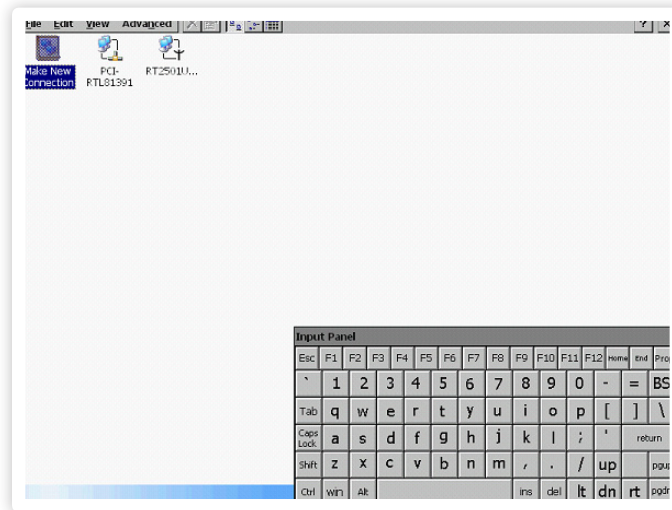
- B.0.4 When you are successfully connected to the network of your choice, simply tap the **OK** button at the top right corner of the screen to return to the Configuration Wizard.

Appendix B

Changing Wireless Networks Continued

B.1.0 Changing Network Settings

- B.1.1 If you need to change any network settings (e.g. IP address or DNS settings), tap the blue **NETWORK** button at the bottom left corner of the screen. The following screen will appear.



- B.1.2 To change your network settings, double click on the wireless network icon (**RT2501USB1**). Once you have made the necessary changes, tap **OK** and close the Network Connections window. You will automatically return to the Phreesia Configuration Wizard.

Appendix C

Installation Checklist

C.0 Equipment Checklist

Pads:	PhreesiaPads, Base, Stylus, Power Adapter	YES / NO
Router:	Phreesia Router, Ethernet Cable, Power Adapter	YES / NO
Switch:	Phreesia Switch, Power Adapter	YES / NO
Extras:	Ethernet Cable, Power Bar, USB Card Swipe	YES / NO

C.1 PhreesiaPad Information

CE	CE	CE
CE	CE	CE
CE	CE	CE
CE	CE	CE

C.2 Router Information *(if a non-Phreesia router is used)*

SSID :	
Encryption :	
Authentication :	
Network Key :	
IP Address :	
Subnet Mask :	
Default Gateway :	
DNS 1 :	
DNS 2 :	
Router Serial No :	
Router MAC :	
Switch Serial No :	
Phreesia Router Gateway :	
Phreesia Router Username :	
Phreesia Router Password :	

DEFAULT

Appendix C

Installation Checklist Continued

C.3 External Web Sites

Password Change:	www.phreesia.net/practicesetup
Practice Portal:	www.phreesia.net/practice
Phreesia Web Site:	www.phreesia.com

C.4 PhreesiaPad Testing

Signal Strength Test - Within 30 feet from Router:	YES / NO
Pad Interview Test:	YES / NO
Auto Print Verified:	YES / NO
Are PCs still fully functional (EMR, INTERNET, ETC):	YES / NO
Unique Phreesia Install Code:	

C.5 USB Card Swipe

Computer(s) Installed On:	
Card Swipes Provided:	#

Note: Changes or modifications not expressly approved by the party responsible for compliance could void the user's authority to operate the equipment.

Appendix D

FCC Disclaimers

Caution: Exposure to Radio Frequency Radiation

This tablet contains an internal radio.

- The radiated output power of this tablet is far below the FCC radio frequency exposure limits.
- Nevertheless, this tablet shall be used in such a manner that the potential for human contact with the antenna during normal operation is minimized.
- The tablet should not be used if the case is open or if the internal antenna is exposed. When not in use, the tablet should be powered off.
- In addition, the tablet should be used/worn in accordance with the user instructions

Note

Changes or modifications not expressly approved by the party responsible for compliance could void the user's authority to operate the equipment.

FCC ID Label Location

The FCC Label can be found behind the expansion panel, on the back of the PhreesiaPad:

