

Rhein Tech Laboratories, Inc.
360 Herndon Parkway
Suite 1400
Herndon, VA 20170
<http://www.rheintech.com>

Client: HandEra, Inc.
Model #: PHRPAD40
Standard: FCC 15.247
FCC ID: URZ-WF10030
Report #: 2012195

Appendix D: ID Label and Label Location

Please refer to the following pages.

MODEL NO.: PHRPAD40

INPUT: 15V ■ 2.4A

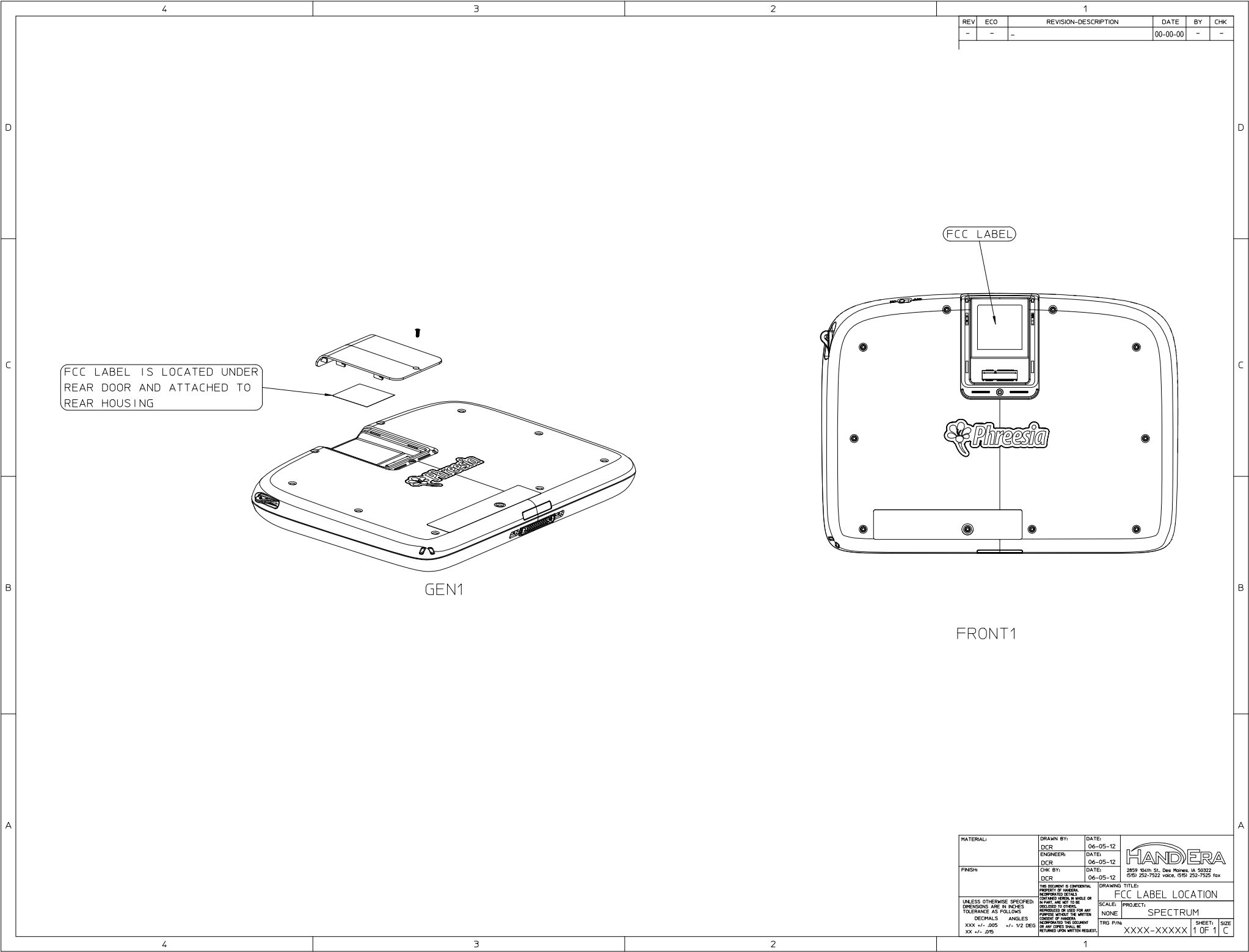
FCC ID: URZ-WF10030

This device complies with Part 15 of the FCC Rules.

Operation is subject to the following two conditions:

- (1) this device may not cause harmful interference, and**
- (2) this device must accept any interference received, including interference that may cause undesired operation.**





1			REVISION-DESCRIPTION		DATE	BY	CHK
REV	ECO				00-00-00	-	-
-	-	-					

MATERIAL:		DRAWN BY:	DATE:	<div><div>HANDERA</div><div>2859 104th St., Des Moines, IA 50322 (515) 252-7522 voice, (515) 252-7525 fax</div></div>			
		DCR	06-05-12				
		ENGINEER:	DATE:				
FINISH		DCR	06-05-12				
		CHK BY:	DATE:				
		DCR	06-05-12				
UNLESS OTHERWISE SPECIFIED: DIMENSIONS ARE IN INCHES TOLERANCES AS FOLLOWS: DECIMALS ANGLES XXX +/- .005 +/- 1/2 DEG XX +/- .015		THIS DOCUMENT IS CONFIDENTIAL PROPERTY OF HANDERA UNLESS OTHERWISE SPECIFIED CONTAINED HEREIN IS MADE OR IN PART ARE NOT TO BE DISCLOSED TO OTHERS WITHOUT THE WRITTEN CONSENT OF HANDERA OR ANY COPIES SHALL BE RETURNED UPON WRITTEN REQUEST.		DRAWING TITLE: FCC LABEL LOCATION SCALE: NONE PROJECT: SPECTRUM TRG P/N: XXXX-XXXXX SHEET: 1 OF 1 SIZE: C			

Appendix D

FCC Disclaimers

Caution: Exposure to Radio Frequency Radiation

This tablet contains an internal radio.

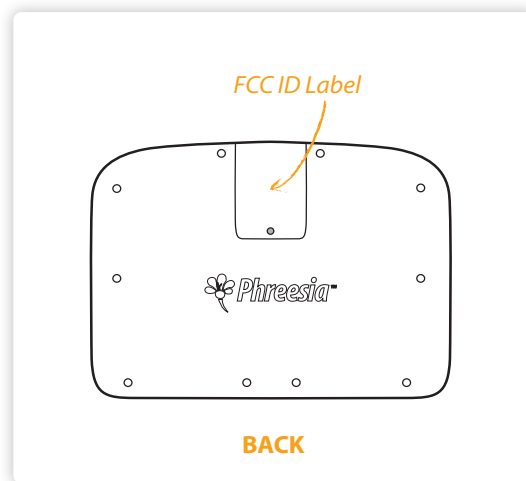
- The radiated output power of this tablet is far below the FCC radio frequency exposure limits.
- Nevertheless, this tablet shall be used in such a manner that the potential for human contact with the antenna during normal operation is minimized.
- The tablet should not be used if the case is open or if the internal antenna is exposed. When not in use, the tablet should be powered off.
- In addition, the tablet should be used/worn in accordance with the user instructions

Note

Changes or modifications not expressly approved by the party responsible for compliance could void the user's authority to operate the equipment.

FCC ID Label Location

The FCC Label can be found behind the expansion panel, on the back of the PhreesiaPad:





2859 – 104th Street * Des Moines, IA 50322 * 515.252.7522 phone * 515.252.7525 fax

FCC ID Package Label

27 June 2012

To Whom It May Concern:

Handera does hereby affirm that a label bearing the FCC ID of the Handera WiFi Tablet will be prominently placed on the package exterior in a manner that will make said label immediately visible to the end user at the time of purchase.

Thank you,

By:

Mark Kubovich
(Signature)

Mark Kubovich
(Print name)

Title:

President

On behalf of:

Handera Inc.
(Company Name)

Telephone:

515-252-7522 x114