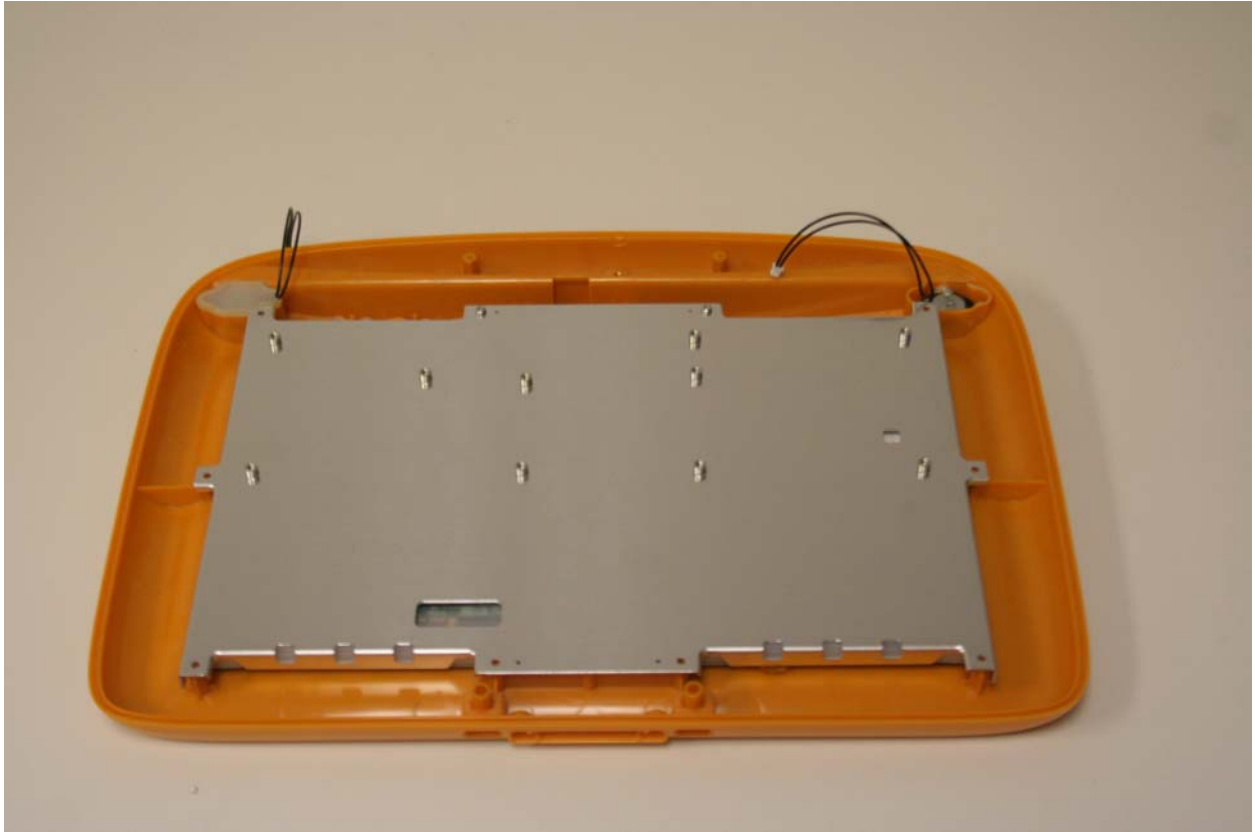


Rhein Tech Laboratories, Inc.  
360 Herndon Parkway  
Suite 1400  
Herndon, VA 20170  
<http://www.rheintech.com>

Client: HandEra, Inc.  
Model #: PHRPAD40  
Standard: FCC 15.247  
FCC ID: URZ-WF10030  
Report #: 2012195

## **Appendix K: Internal Photographs**

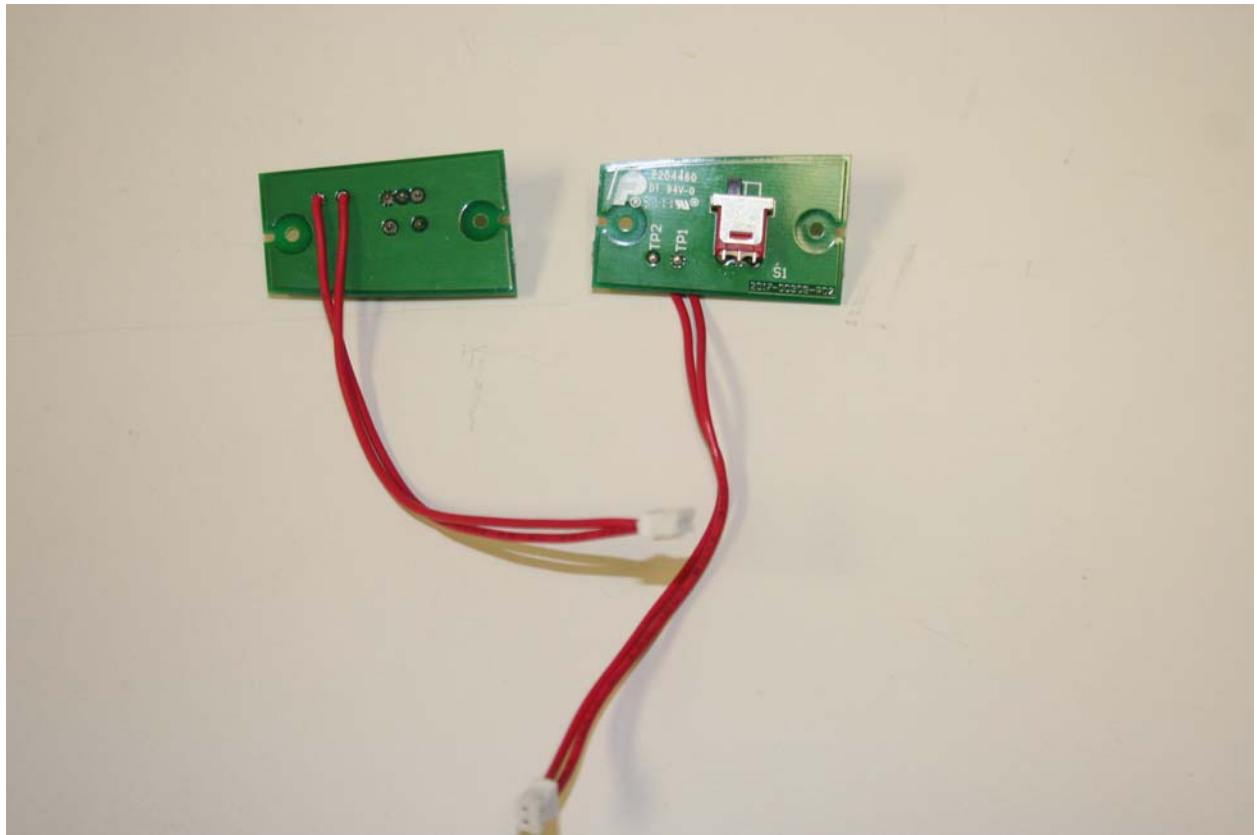
Please refer to the following pages.



Location of chassis within unit



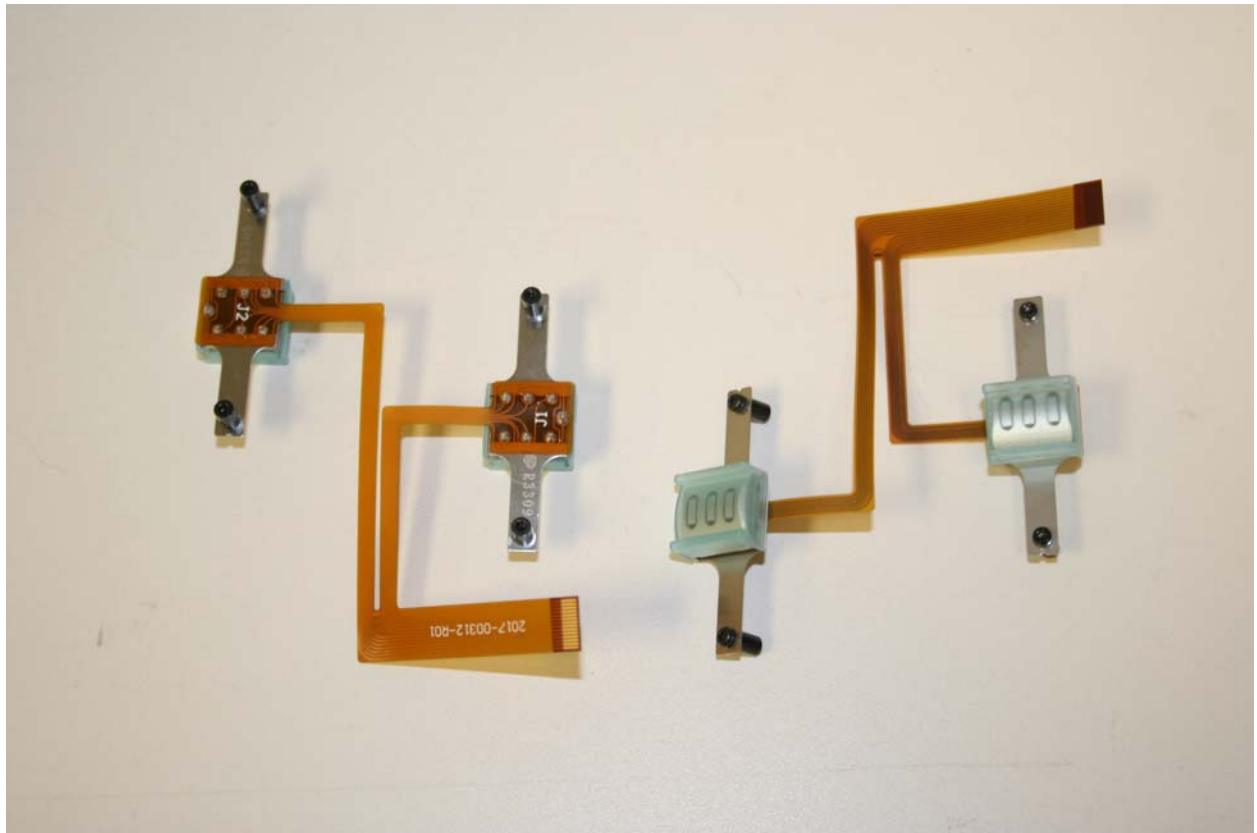
Location of 2400-00273, 2400-00284, 2400-00291, 2400-00306, 2400-00307, and 2400-00309 PCB assemblies on chassis.



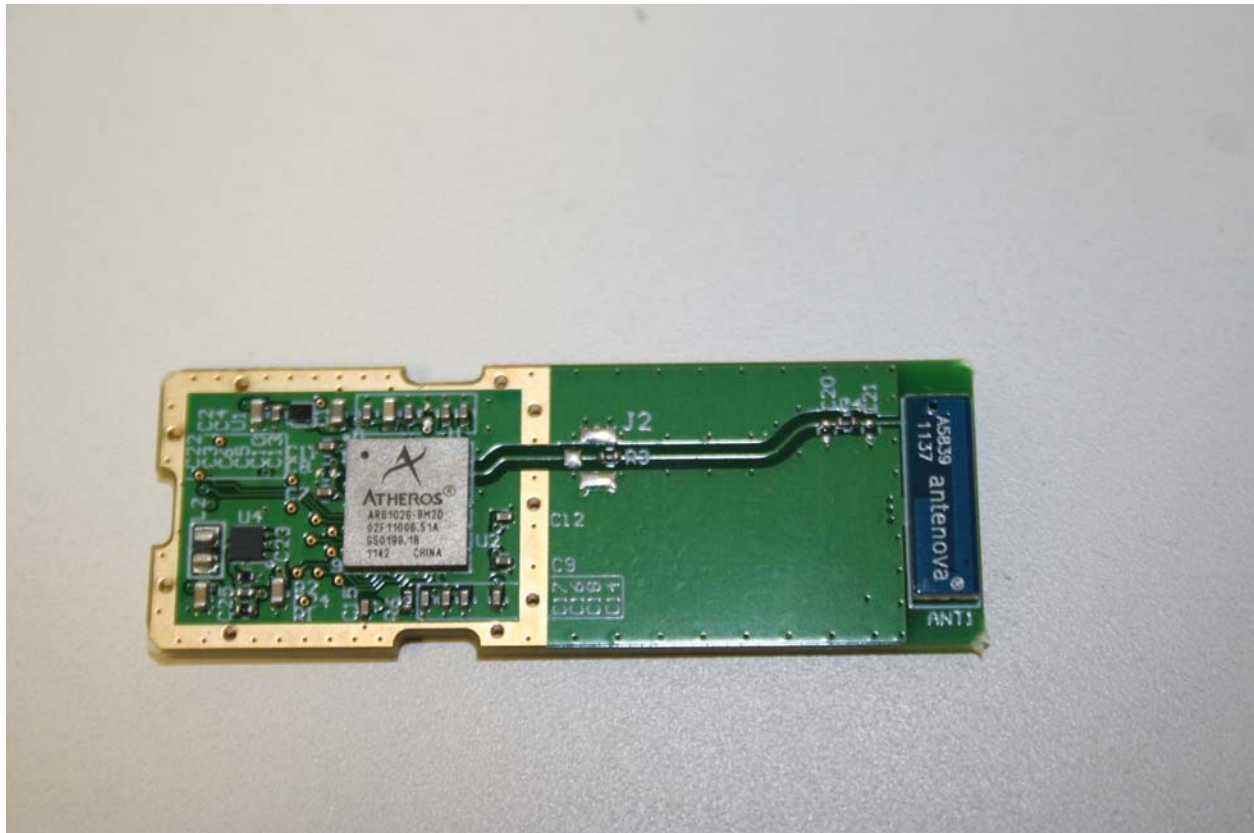
Front and Rear of 2400-00306 PCB assembly



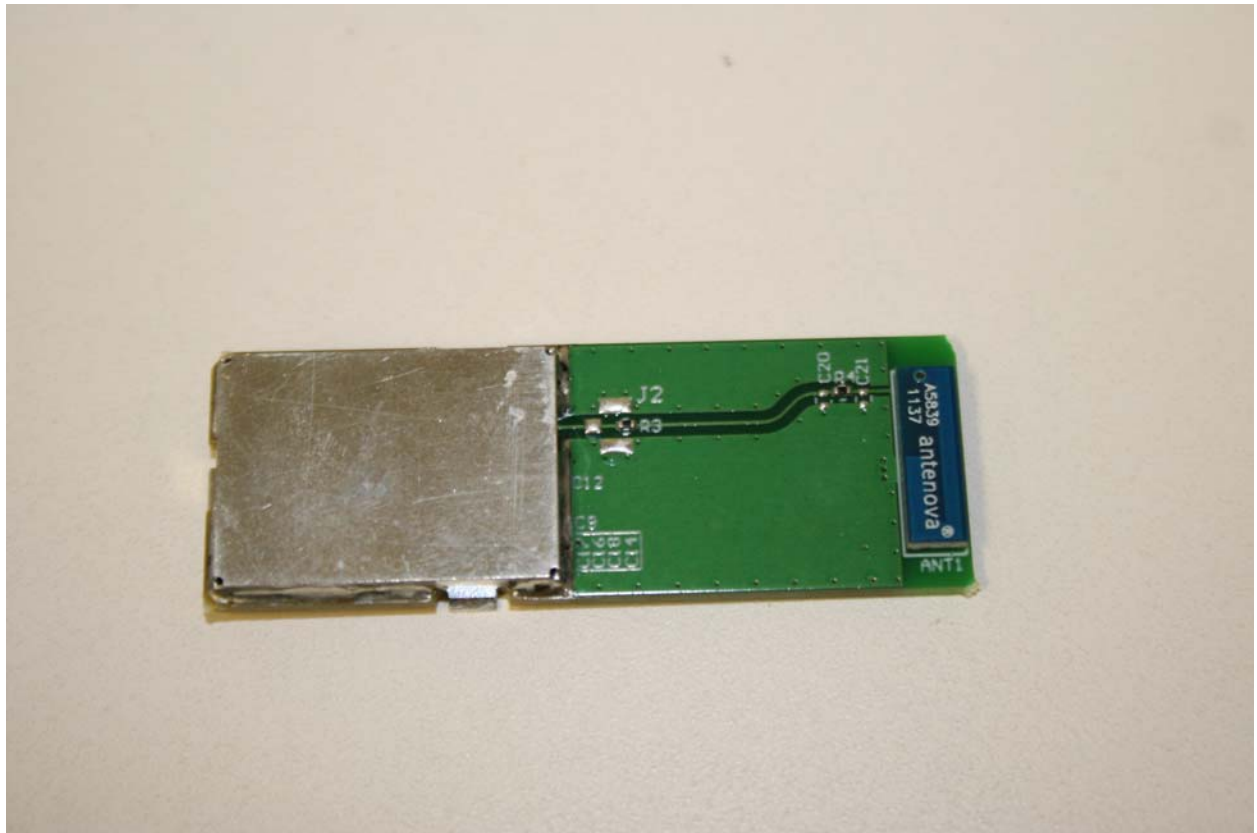
Front and Rear of 2400-00307 PCB assembly



Front and Rear of 2400-00309 flexible circuit board assembly

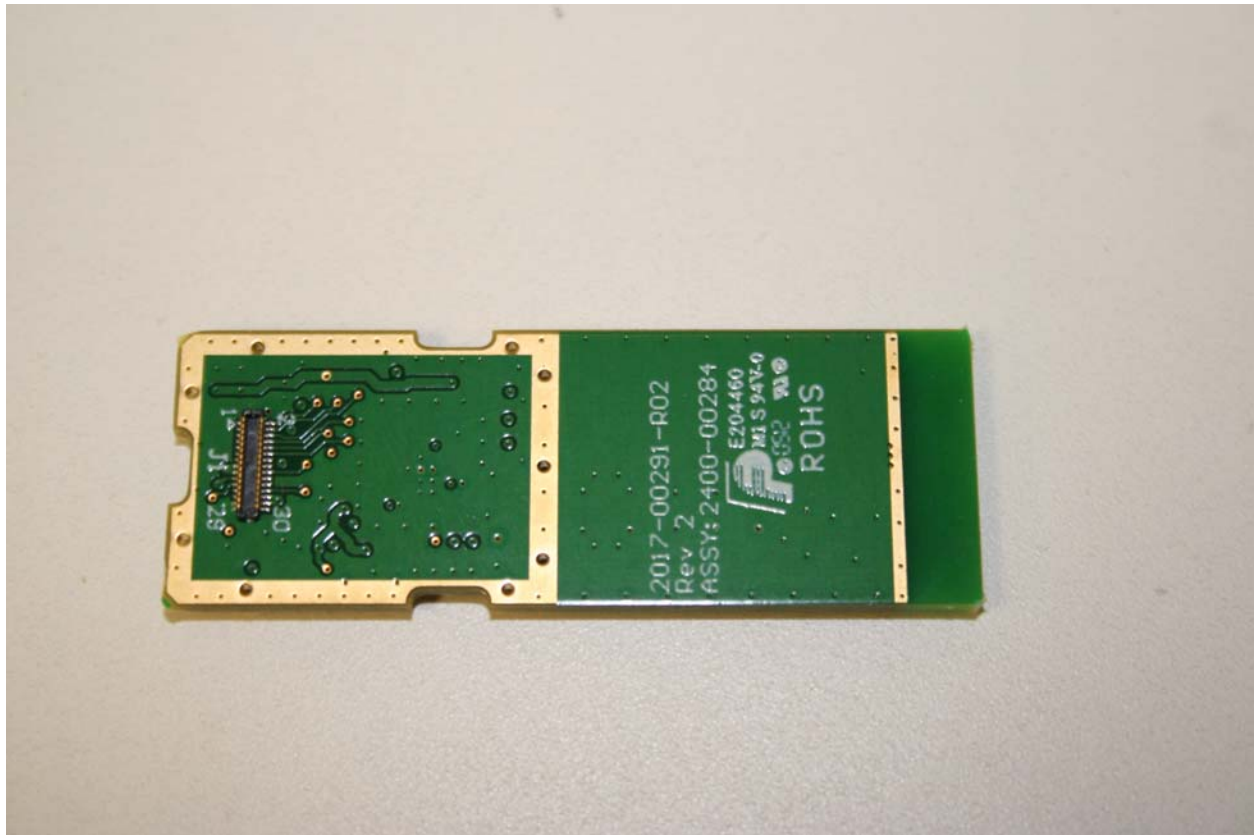


Front of 2400-00284 WiFi PCB assembly, without RF shield can

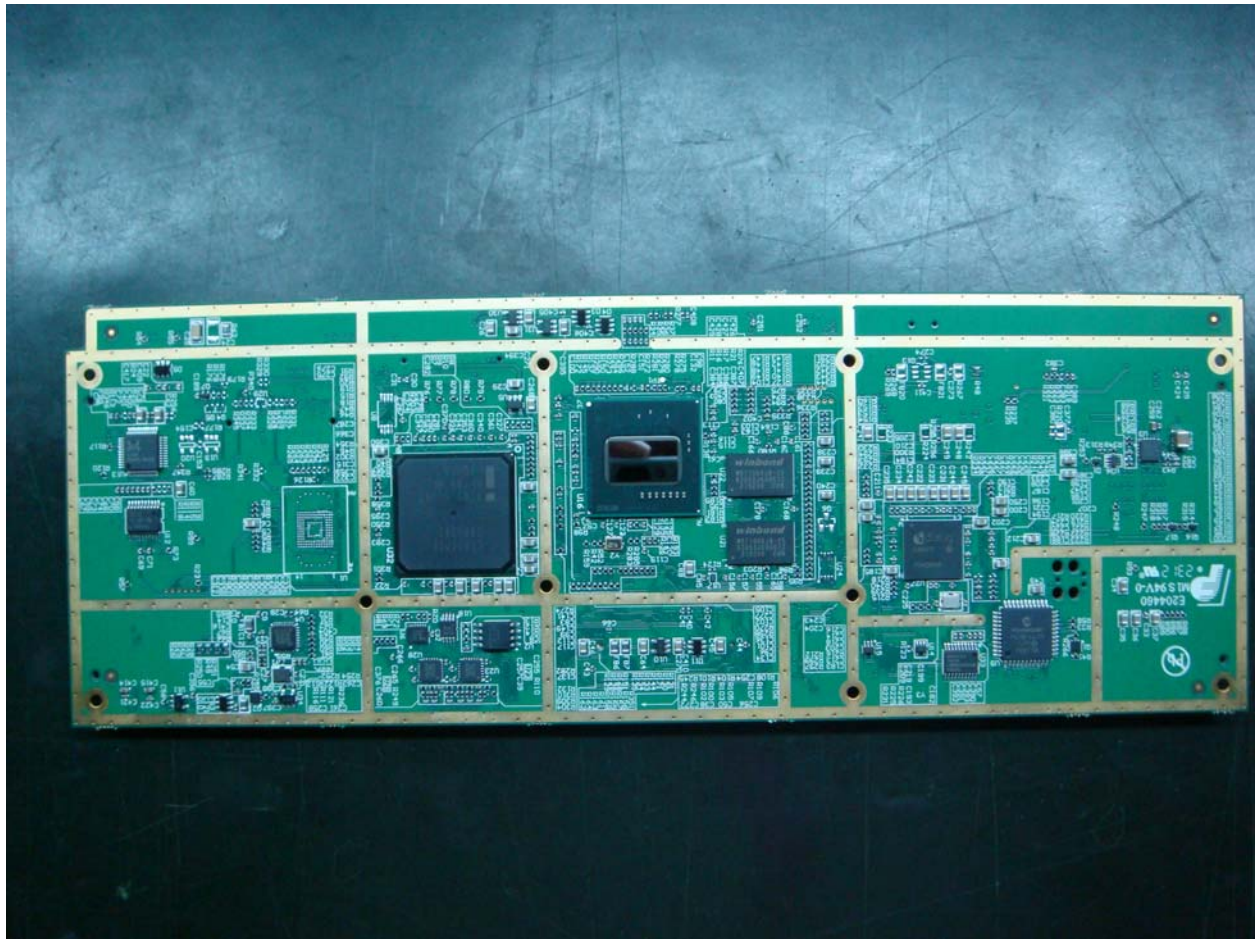


Front of 2400-00284 WiFi PCB assembly, with RF shield can

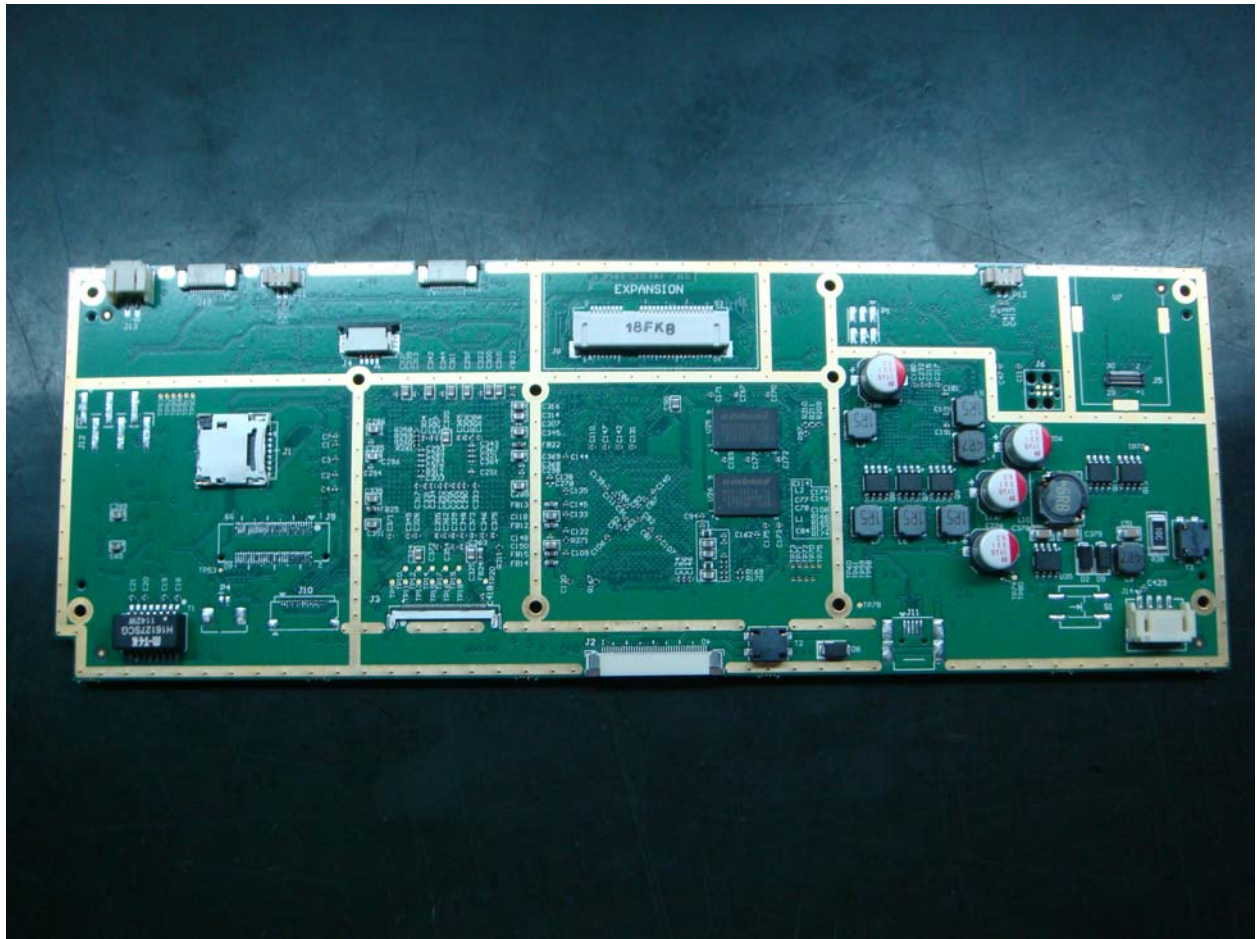




Rear of 2400-00284 WiFi PCB assembly, with RF shield can

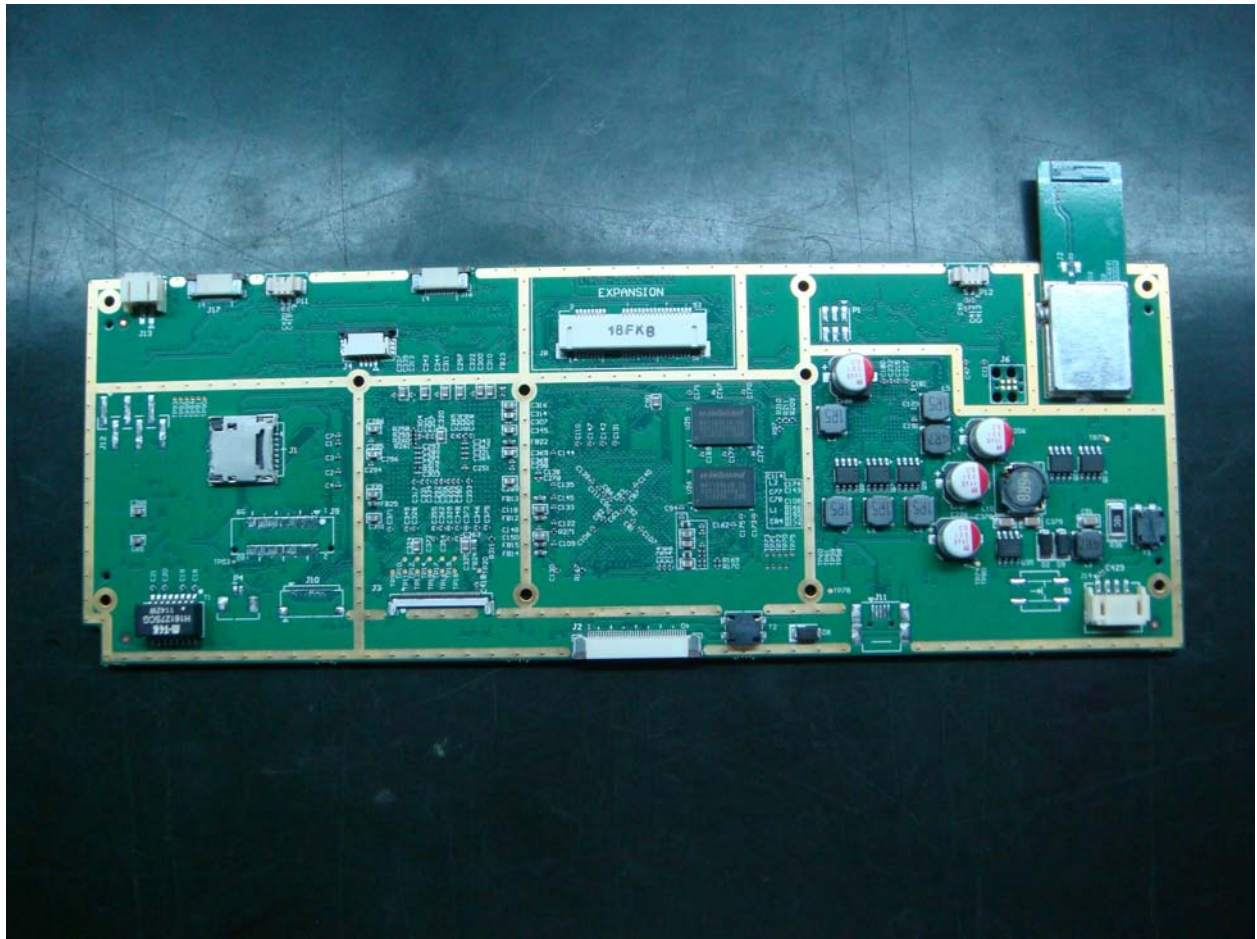


Front of 2400-00273 PCB assembly

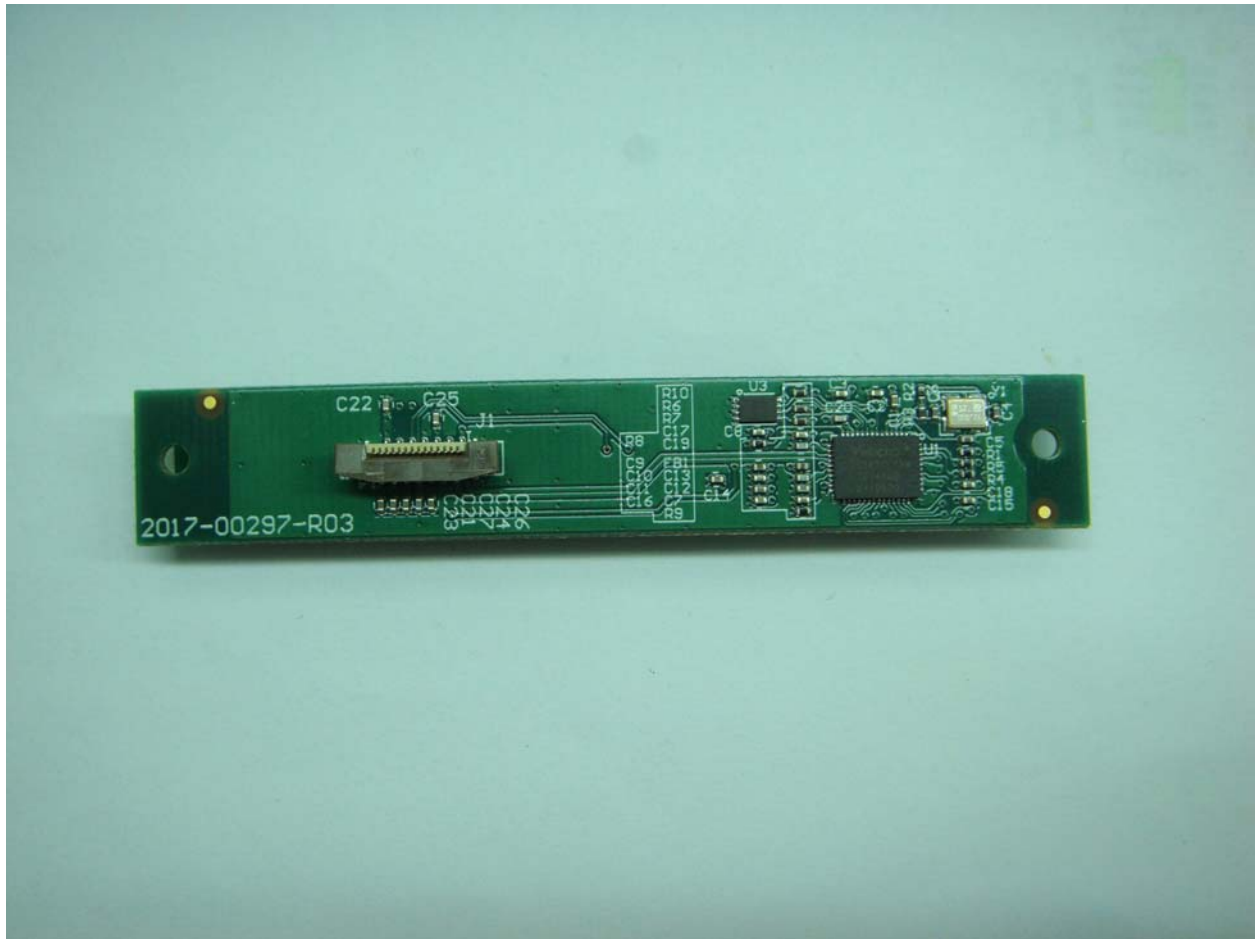


Rear of 2400-00273 PCB assembly

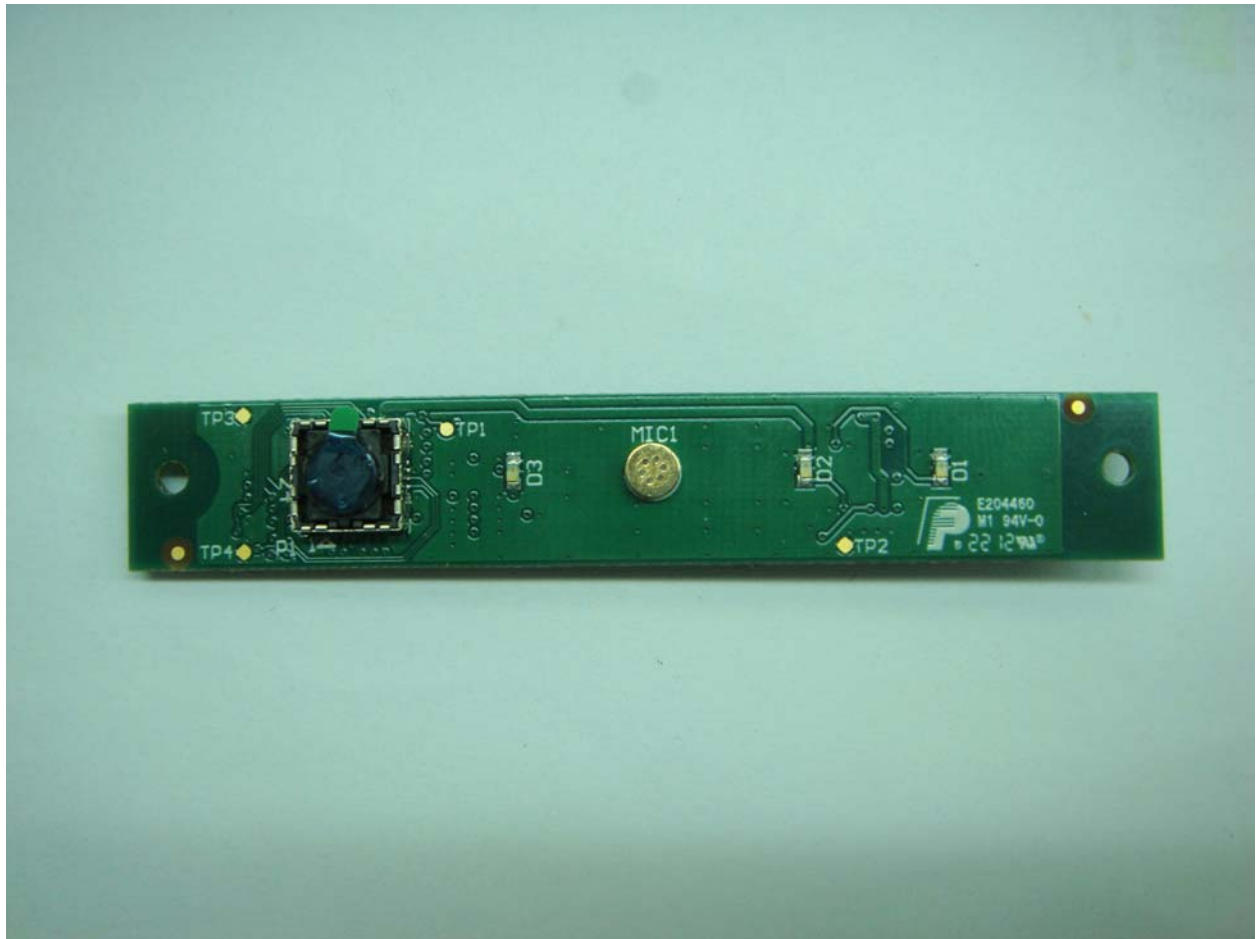




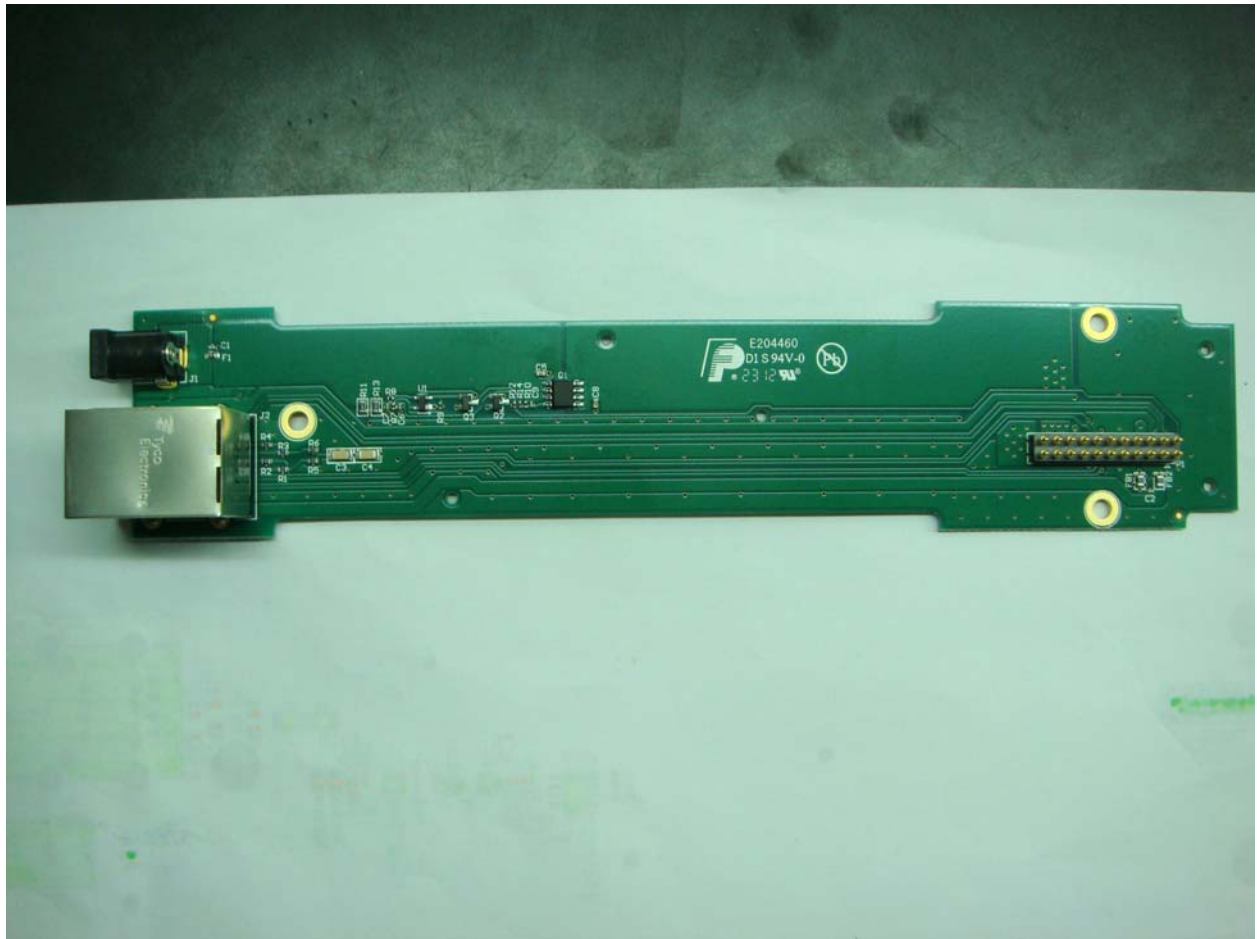
Rear of 2400-00273 PCB assembly with 2400-00284 radio PCBA installed



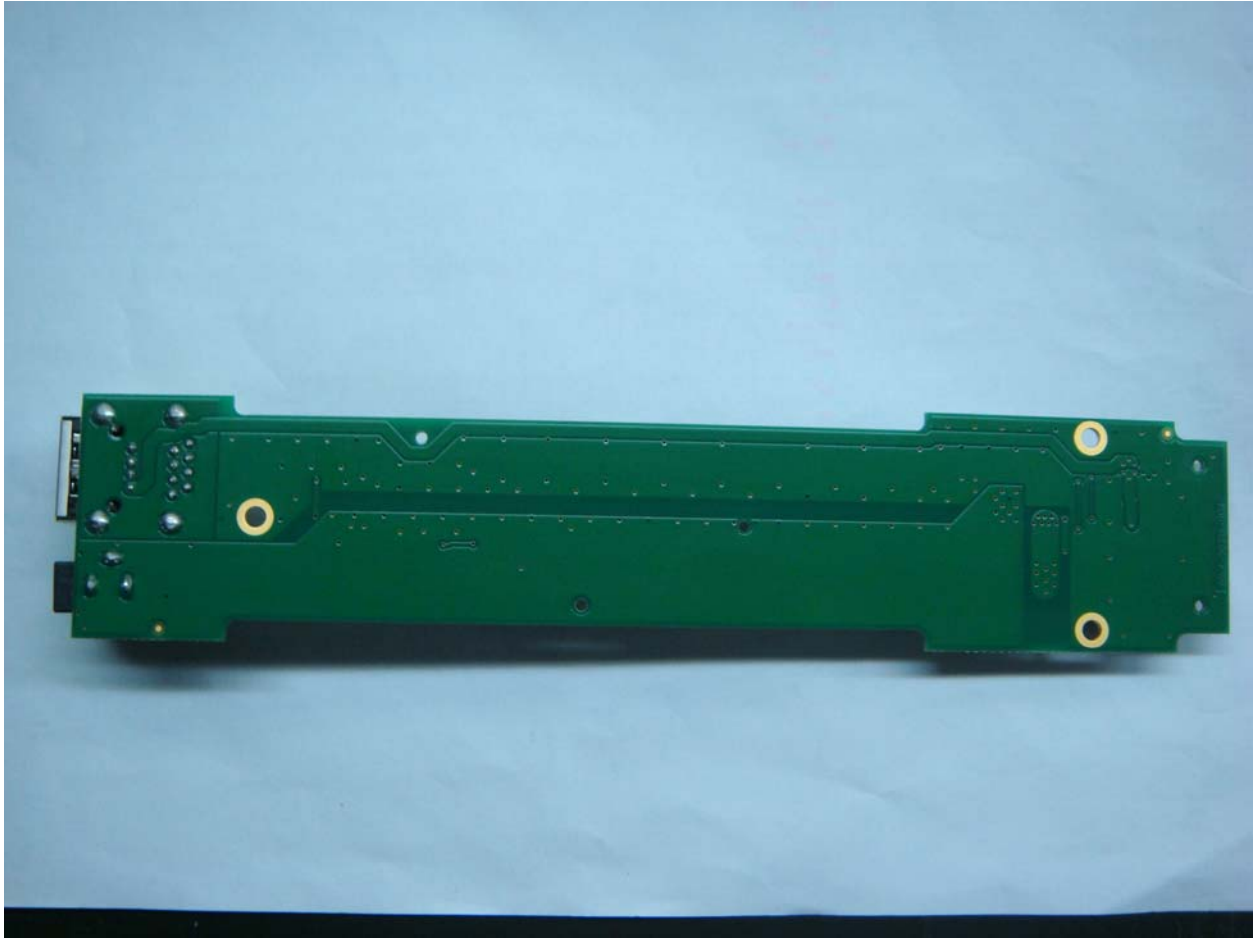
Front of 2400-00291 PCB assembly



Rear of 2400-00291 PCB assembly

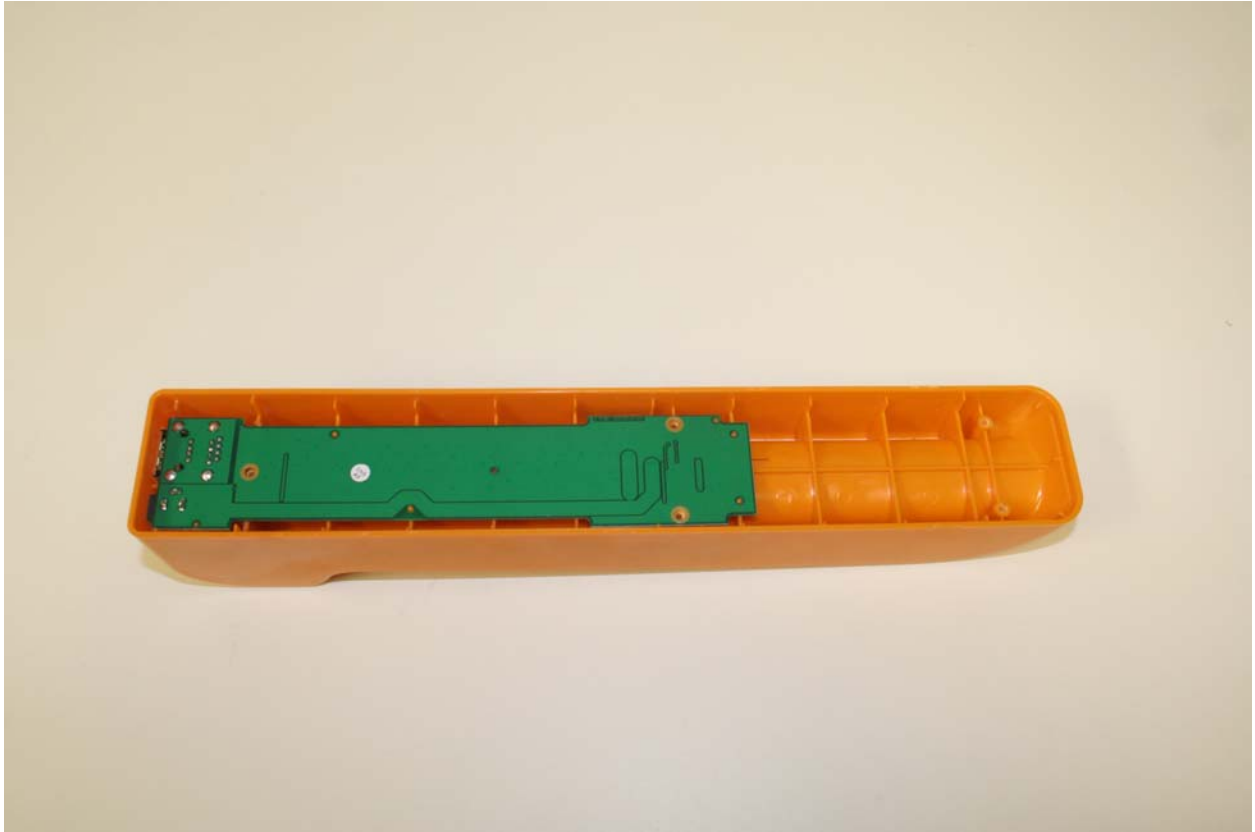


Front of 2400-00319 PCB assembly



Rear of 2400-00319 PCB assembly





Location of 2400-00319 PCB assembly within Docking Cradle