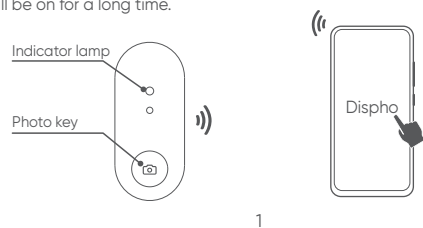


## Tripod Selfie Stick Quick Start Guide

### Bluetooth pairing

1. Press and hold the remote control photo key for 3 seconds to start, the blue light will be on for 3 seconds to enter the matching state, and the matching state indicator will flash blue.
2. Turn on the mobile phone Bluetooth to enter the searching state, and click "Dispho" from the searched device list. After the connection is successful, the blue light of the remote control will be on for a long time.

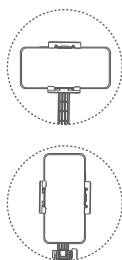


### Usage method

1. Using the selfie stick

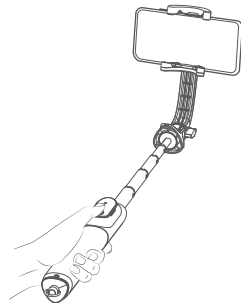


2. Fix the phone

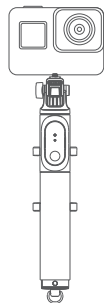


2

3. Take a selfie



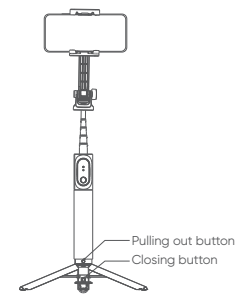
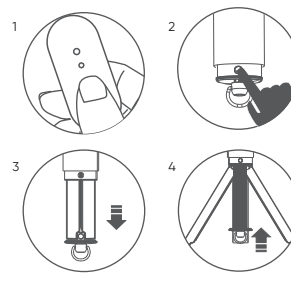
4. How to use the tripod (Optional)



3

5. Use tripod (Optional)

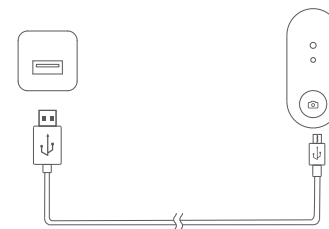
Take off the remote control and press the white closing button at the bottom of the handle with your finger to spring the tripod away. Pull the lower ring out of the tripod, then push the rod upward to put the tripod on the horizontal plane.



4

### Charging Mode of Remote Controller

Connect the type-c interface charging, and the red light will be on for a long time during the process of charging; the red lamp will be off automatically after charging is finished.



5

### Powering off

Long press photograph key for 3 s, blue lamp will flicker for 2 times and then be off, which means machine is shut down.

### Note:

- Remote control range: 10 meters (when unobstructed)
- If the remote control is not used for 10 minutes, it will automatically enter the sleep state. Wake it up by pressing the photo key and automatically resume the connection. If the remote control is not used for 30 minutes, it will automatically shut down.
- When the battery power is less than 20%, the red light of the remote control will flash to remind when using the selfie stick. Please charge it in time
- Always place the tripod on an even surface and make sure it is stable. Keep it away from anything that could cause it fall over.

6

### Warnings

1. Watch your hands during use.
2. The product is not designed for children under 14 years old. Do not swallow it.
3. Do not dismantle or modify the product.
4. Do not store the product in a humid environment.
5. Keep the product away from heat sources.
6. Do not expose the product to water or other liquids in case of damage.

The device has been evaluated to meet general RF exposure requirement, The device can be used in portable exposure condition without restriction Federal Communication Commission (FCC) Radiation Exposure Statement Power is so low that no RF exposure calculation is needed.

This device complies with part 15 of the FCC rules. Operation is subject to the following two conditions:

- (1) this device may not cause harmful interference, and
- (2) this device must accept any interference received, including interference that may cause undesired operation.

NOTE: The manufacturer is not responsible for any radio or TV interference caused by unauthorized modifications or changes to this equipment. Such modifications or changes could void the user's authority to operate the equipment.

NOTE: This equipment has been tested and found to comply with the limits for a Class B digital device, pursuant to part 15 of the FCC Rules. These limits are designed to provide reasonable protection against harmful interference in a residential installation. This equipment generates uses and can radiate radio frequency energy and, if not installed and used in accordance with the instructions, may cause harmful interference to radio communications. However, there is no guarantee that interference will not occur in a particular installation. If this equipment does cause harmful interference to radio or television reception, which can be determined by turning the equipment off and on, the user is encouraged to try to correct the interference by one or more of the following measures:

- Reorient or relocate the receiving antenna.
- Increase the separation between the equipment and receiver.
- Connect the equipment into an outlet on a circuit different from that to which the receiver is connected.
- Consult the dealer or an experienced radio/TV technician for help.

Any changes or modifications not expressly approved by the party responsible for compliance could void the user's authority to operate this equipment.