

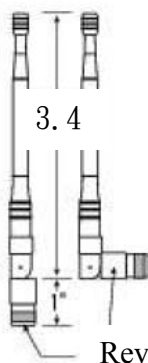
Antenna Specification

2dBi DIPOLE

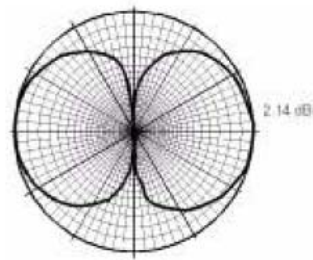


Dimensions and Mounting Specifications

Vertical Radiation



Reverse SMA - Female



Dimension(H)=3.4 in.

Frequency Range	2.4-2.484 GHz
VSWR	Less than 2:1
Power	5 watts
Gain	2dBi
Polarization	Linear
Azimuth 3dB BW	Omnidirectional
Elevations 3dB BW	70 degrees