

Annex C Photo documentation

Appendix to Test Report No.: 1-1238/16-02-39-A



Testing Laboratory

CTC advanced GmbH

Untertürkheimer Straße 6 – 10

66117 Saarbrücken/Germany

Phone: + 49 681 5 98 - 0

Fax: + 49 681 5 98 - 9075

Internet: <http://www.ctcadvanced.com>

e-mail: mail@ctcadvanced.com

Accredited Test Laboratory:

The testing laboratory (area of testing) is accredited according to DIN EN ISO/IEC 17025 (2005) by the Deutsche Akkreditierungsstelle GmbH (DAkkS)

The accreditation is valid for the scope of testing procedures as stated in the accreditation certificate with the registration number: D-PL-12076-01-01

Photo 1: Measurement System DASY 5



Photo 2: DUT - front view



Photo 3: DUT - side view



Photo 4: DUT - rear view



Figure 1 shows the back of the mobile phone with the battery cover removed. The battery cover is shown to the left, and the battery compartment is visible on the right. The back of the phone shows a label with technical specifications and a warning symbol.

Photo 7: Battery



Photo 8: Test position left hand touched

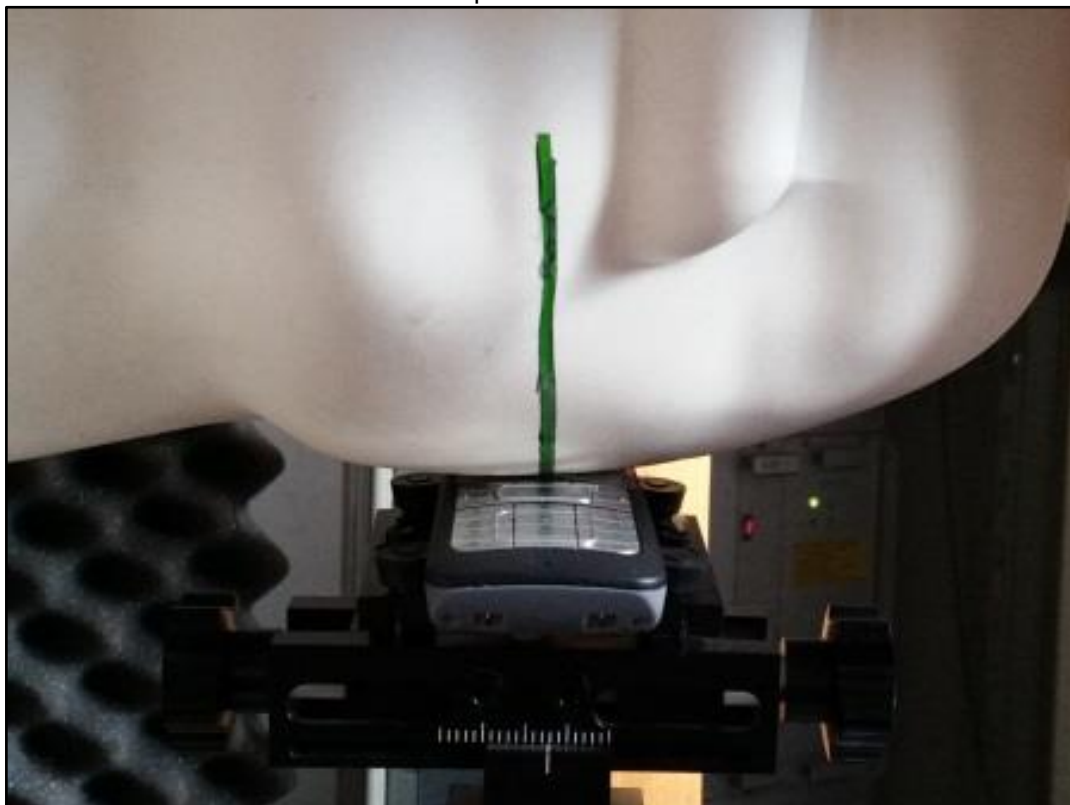


Photo 9: Test position left hand touched



Photo 10: Test position left hand touched



Photo 11: Test position left hand tilted 15°

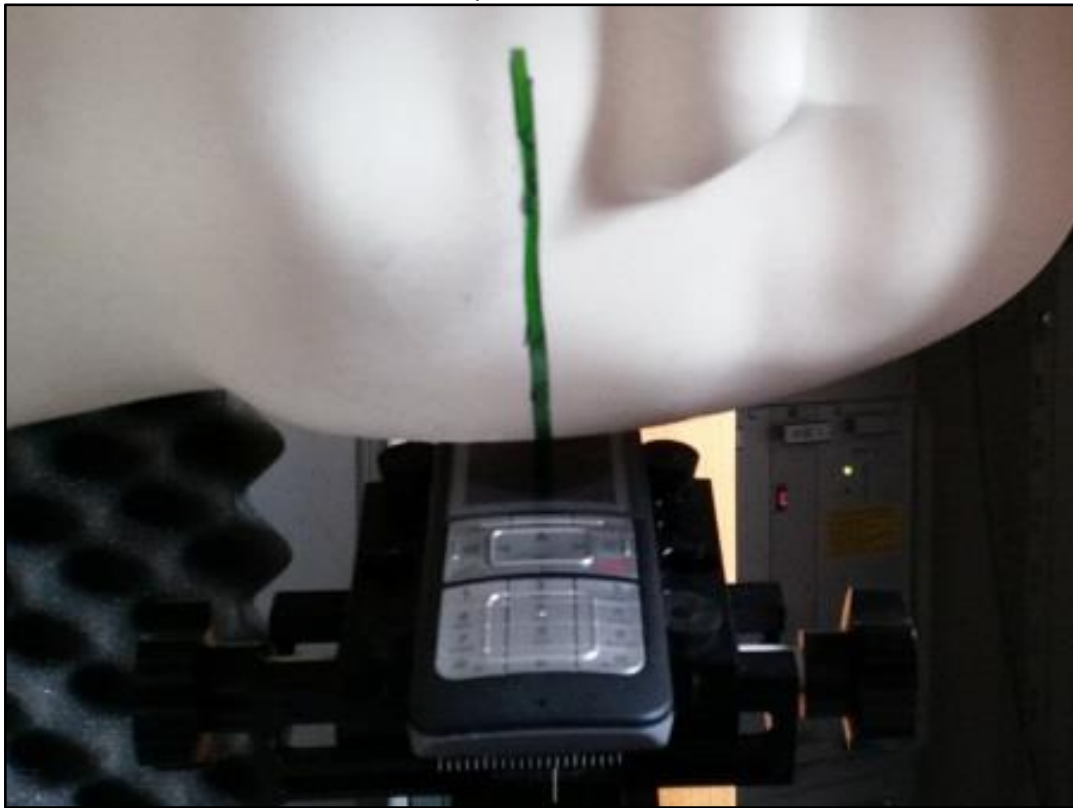


Photo 12: Test position left hand tilted 15°



Photo 13: Test position right hand touched

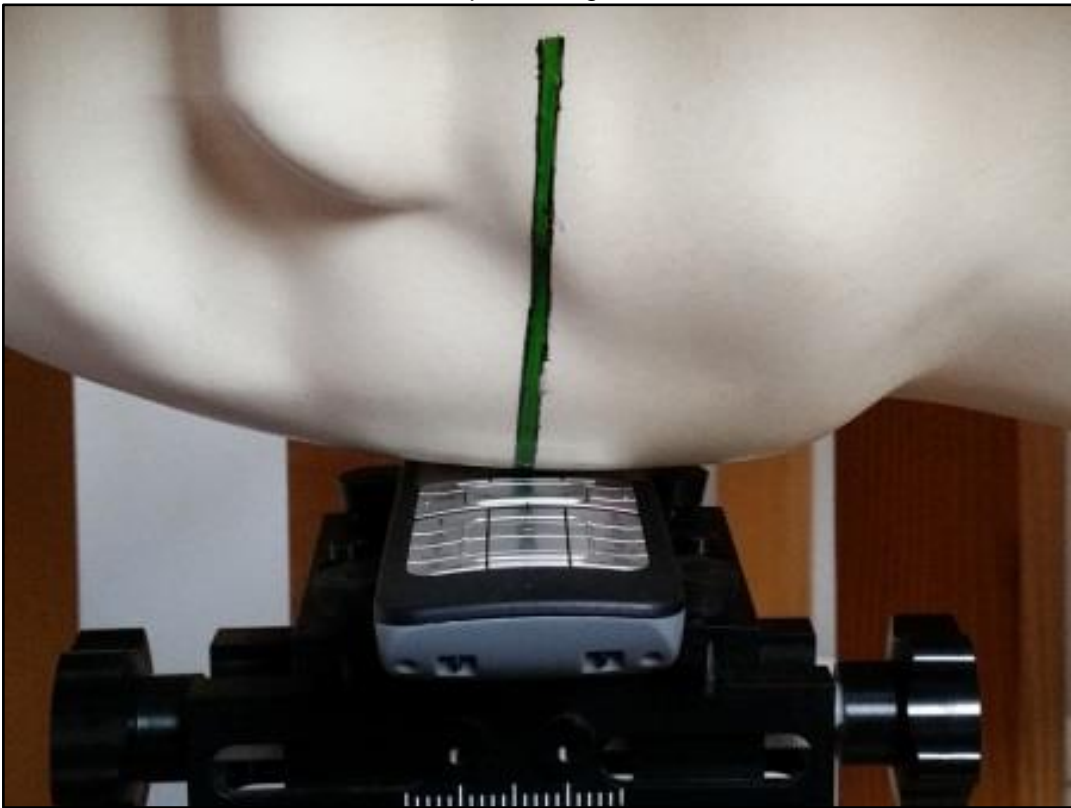


Photo 14: Test position right hand touched



Photo 15: Test position right hand touched



Photo 16: Test position right hand tilted 15°

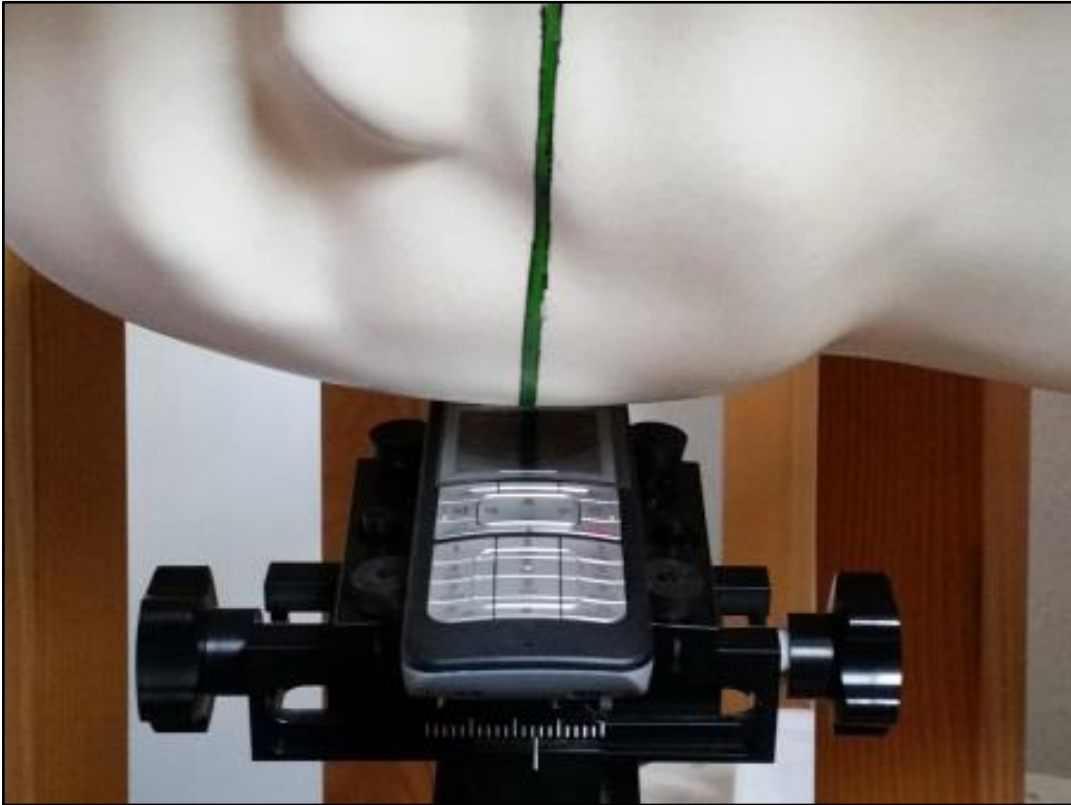


Photo 17: Test position right hand tilted 15°



Photo 18: Test position body worn front side



Photo 19: Test position body worn rear side



Photo 20: Test position body worn rear side without clip

