

Test Plot 1#: GSM 850_Head Left Cheek_Middle**DUT: Mobile phone; Type: AM88; Serial: 17103000221**

Communication System: Generic GSM; Frequency: 836.6 MHz; Duty Cycle: 1:8
Medium parameters used: $f = 836.6$ MHz; $\sigma = 0.89$ S/m; $\epsilon_r = 42.319$; $\rho = 1000$ kg/m³ ;
Phantom section: Left Section

DASY5 Configuration:

- Probe: EX3DV4 - SN3619; ConvF(8.9, 8.9, 8.9); Calibrated: 2017/9/25;
- Sensor-Surface: 1.4mm (Mechanical Surface Detection)
- Electronics: DAE4 Sn1459; Calibrated: 2017/9/15
- Phantom: SAM (30deg probe tilt) with CRP v5.0_20150321; Type: QD000P40CD; Serial: TP:1874
- Measurement SW: DASY52, Version 52.8 (8);

Area Scan (51x91x1): Interpolated grid: dx=1.500 mm, dy=1.500 mm

Maximum value of SAR (interpolated) = 0.178 W/kg

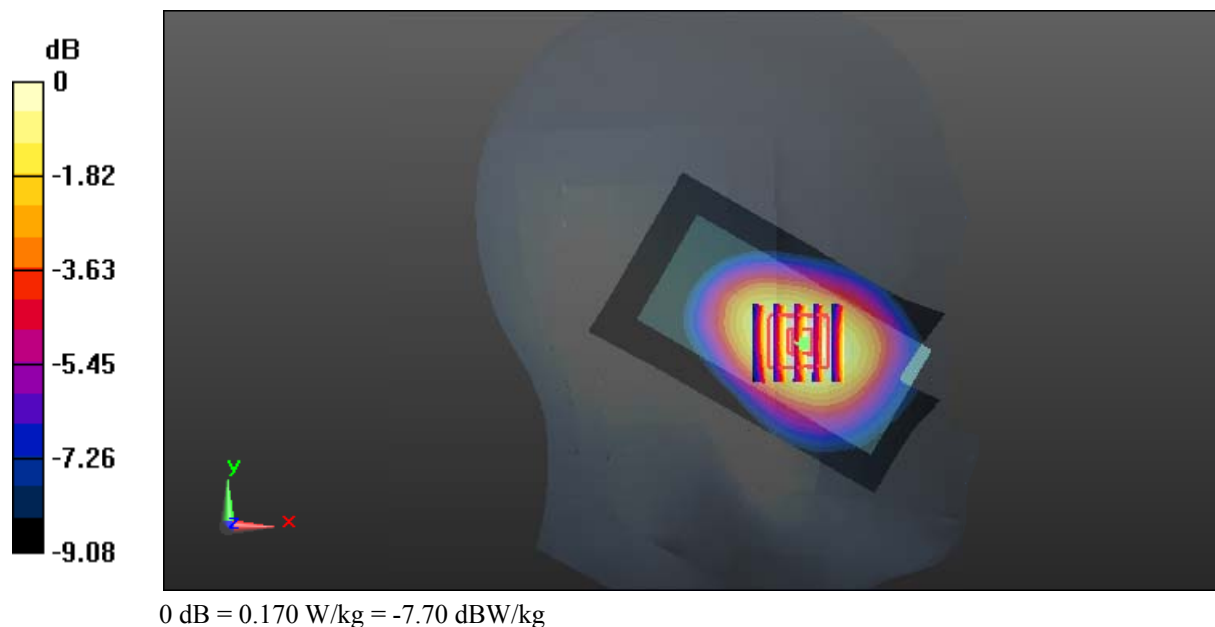
Zoom Scan (5x5x7)/Cube 0: Measurement grid: dx=8mm, dy=8mm, dz=5mm

Reference Value = 4.393 V/m; Power Drift = -0.17 dB

Peak SAR (extrapolated) = 0.184 W/kg

SAR(1 g) = 0.143 W/kg; SAR(10 g) = 0.104 W/kg

Maximum value of SAR (measured) = 0.170 W/kg



Test Plot 2#: GSM 850_Head Left Tilt_Middle**DUT: Mobile phone; Type: AM88; Serial: 17103000221**

Communication System: Generic GSM; Frequency: 836.6 MHz; Duty Cycle: 1:8
Medium parameters used: $f = 836.6$ MHz; $\sigma = 0.89$ S/m; $\epsilon_r = 42.319$; $\rho = 1000$ kg/m³ ;
Phantom section: Left Section

DASY5 Configuration:

- Probe: EX3DV4 - SN3619; ConvF(8.9, 8.9, 8.9); Calibrated: 2017/9/25;
- Sensor-Surface: 1.4mm (Mechanical Surface Detection)
- Electronics: DAE4 Sn1459; Calibrated: 2017/9/15
- Phantom: SAM (30deg probe tilt) with CRP v5.0_20150321; Type: QD000P40CD; Serial: TP:1874
- Measurement SW: DASY52, Version 52.8 (8);

Area Scan (51x91x1): Interpolated grid: dx=1.500 mm, dy=1.500 mm

Maximum value of SAR (interpolated) = 0.102 W/kg

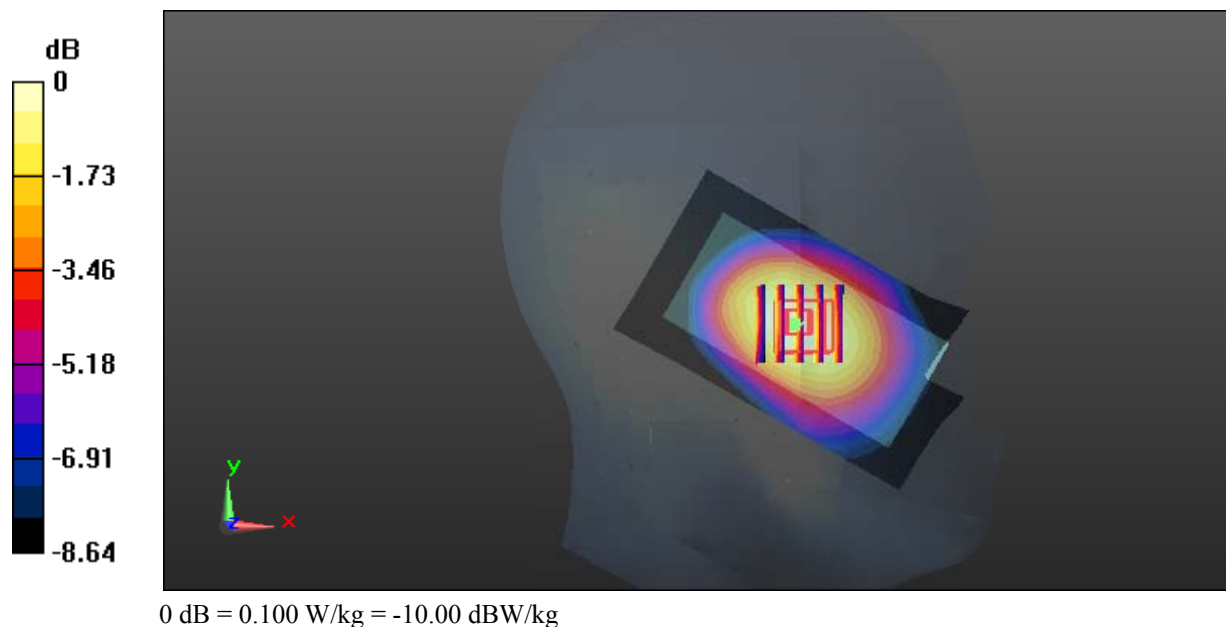
Zoom Scan (5x5x7)/Cube 0: Measurement grid: dx=8mm, dy=8mm, dz=5mm

Reference Value = 5.104 V/m; Power Drift = 0.05 dB

Peak SAR (extrapolated) = 0.110 W/kg

SAR(1 g) = 0.082 W/kg; SAR(10 g) = 0.061 W/kg

Maximum value of SAR (measured) = 0.100 W/kg



Test Plot 3#: GSM 850_Head Right Cheek_Middle**DUT: Mobile phone; Type: AM88; Serial: 17103000221**

Communication System: Generic GSM; Frequency: 836.6 MHz; Duty Cycle: 1:8
Medium parameters used: $f = 836.6$ MHz; $\sigma = 0.89$ S/m; $\epsilon_r = 42.319$; $\rho = 1000$ kg/m³ ;
Phantom section: Right Section

DASY5 Configuration:

- Probe: EX3DV4 - SN3619; ConvF(8.9, 8.9, 8.9); Calibrated: 2017/9/25;
- Sensor-Surface: 1.4mm (Mechanical Surface Detection)
- Electronics: DAE4 Sn1459; Calibrated: 2017/9/15
- Phantom: SAM (30deg probe tilt) with CRP v5.0_20150321; Type: QD000P40CD; Serial: TP:1874
- Measurement SW: DASY52, Version 52.8 (8);

Area Scan (51x91x1): Interpolated grid: dx=1.500 mm, dy=1.500 mm

Maximum value of SAR (interpolated) = 0.198 W/kg

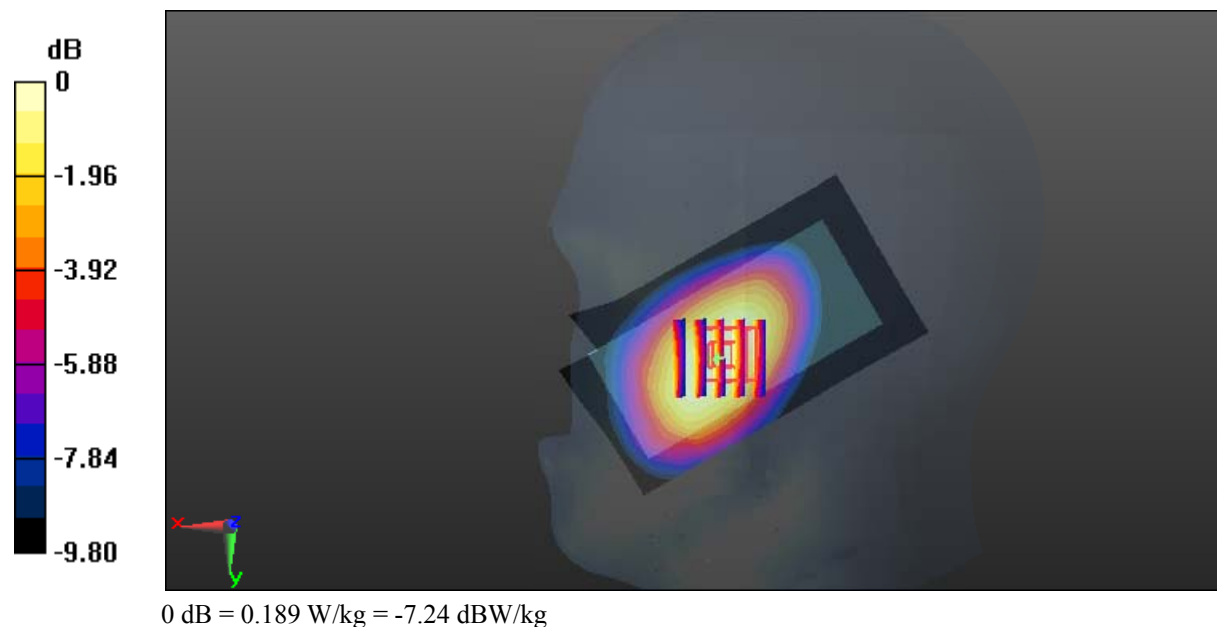
Zoom Scan (5x5x7)/Cube 0: Measurement grid: dx=8mm, dy=8mm, dz=5mm

Reference Value = 4.120 V/m; Power Drift = 0.06 dB

Peak SAR (extrapolated) = 0.210 W/kg

SAR(1 g) = 0.157 W/kg; SAR(10 g) = 0.113 W/kg

Maximum value of SAR (measured) = 0.189 W/kg



Test Plot 4#: GSM 850_Head Right Tilt_Middle**DUT: Mobile phone; Type: AM88; Serial: 17103000221**

Communication System: Generic GSM; Frequency: 836.6 MHz; Duty Cycle: 1:8
Medium parameters used: $f = 836.6$ MHz; $\sigma = 0.89$ S/m; $\epsilon_r = 42.319$; $\rho = 1000$ kg/m³ ;
Phantom section: Right Section

DASY5 Configuration:

- Probe: EX3DV4 - SN3619; ConvF(8.9, 8.9, 8.9); Calibrated: 2017/9/25;
- Sensor-Surface: 1.4mm (Mechanical Surface Detection)
- Electronics: DAE4 Sn1459; Calibrated: 2017/9/15
- Phantom: SAM (30deg probe tilt) with CRP v5.0_20150321; Type: QD000P40CD; Serial: TP:1874
- Measurement SW: DASY52, Version 52.8 (8);

Area Scan (51x91x1): Interpolated grid: dx=1.500 mm, dy=1.500 mm

Maximum value of SAR (interpolated) = 0.107 W/kg

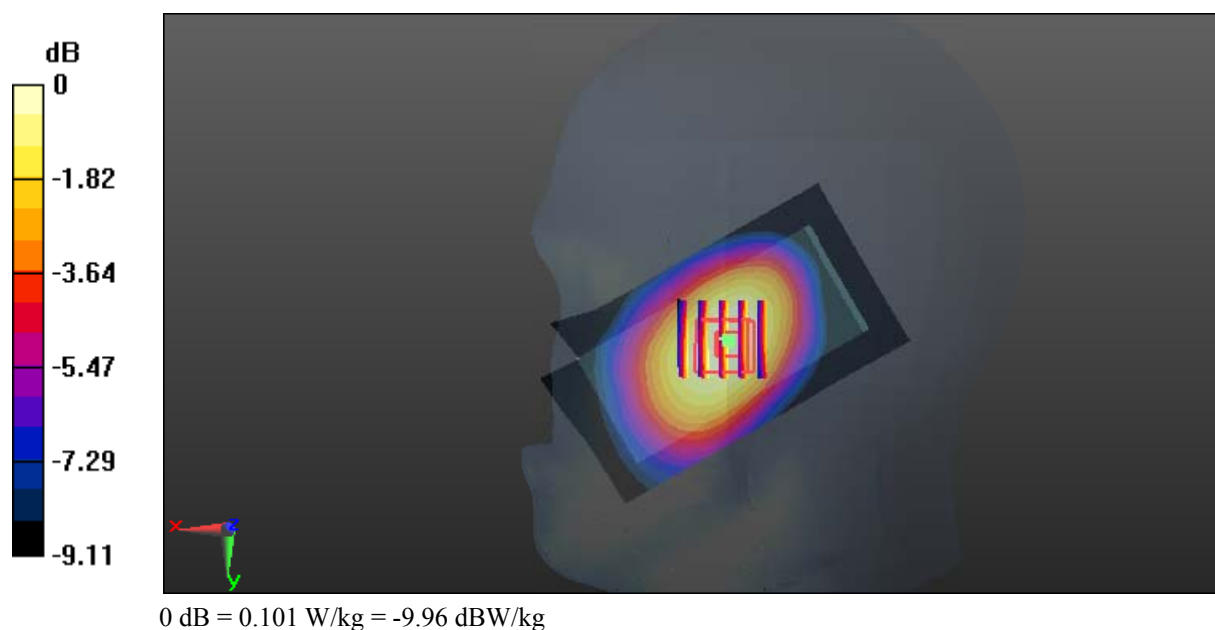
Zoom Scan (5x5x7)/Cube 0: Measurement grid: dx=8mm, dy=8mm, dz=5mm

Reference Value = 4.761 V/m; Power Drift = 0.07 dB

Peak SAR (extrapolated) = 0.110 W/kg

SAR(1 g) = 0.082 W/kg; SAR(10 g) = 0.061 W/kg

Maximum value of SAR (measured) = 0.101 W/kg



Test Plot 5#: GSM 850_Body Worn Back_Middle**DUT: Mobile phone; Type: AM88; Serial: 17103000221**

Communication System: Generic GSM; Frequency: 836.6 MHz; Duty Cycle: 1:8
Medium parameters used: $f = 836.6$ MHz; $\sigma = 0.961$ S/m; $\epsilon_r = 56.698$; $\rho = 1000$ kg/m³ ;
Phantom section: Flat Section

DASY5 Configuration:

- Probe: EX3DV4 - SN3619; ConvF(8.3, 8.3, 8.3); Calibrated: 2017/9/25;
- Sensor-Surface: 1.4mm (Mechanical Surface Detection)
- Electronics: DAE4 Sn1459; Calibrated: 2017/9/15
- Phantom: SAM (30deg probe tilt) with CRP v5.0_20150321; Type: QD000P40CD; Serial: TP:1874
- Measurement SW: DASY52, Version 52.8 (8);

Area Scan (51x91x1): Interpolated grid: dx=1.500 mm, dy=1.500 mm

Maximum value of SAR (interpolated) = 0.345 W/kg

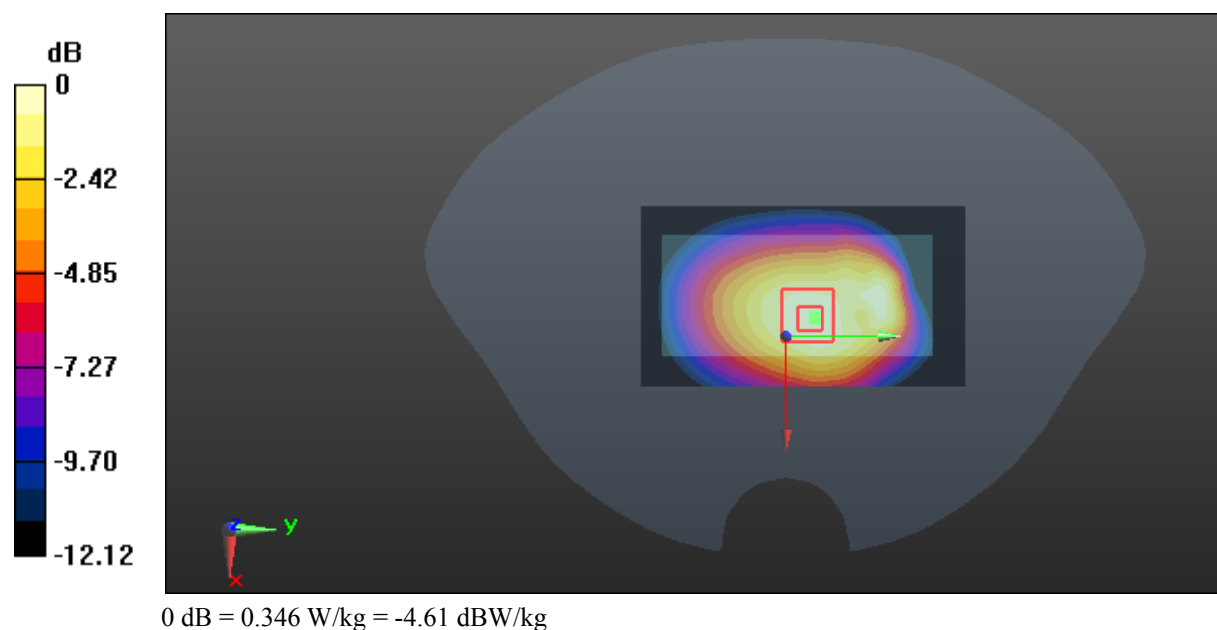
Zoom Scan (5x5x7)/Cube 0: Measurement grid: dx=8mm, dy=8mm, dz=5mm

Reference Value = 15.46 V/m; Power Drift = 0.04 dB

Peak SAR (extrapolated) = 0.390 W/kg

SAR(1 g) = 0.268 W/kg; SAR(10 g) = 0.184 W/kg

Maximum value of SAR (measured) = 0.346 W/kg



Test Plot 6#: GSM 850_Body Back_Middle**DUT: Mobile phone; Type: AM88; Serial: 17103000221**

Communication System: Generic GPRS-2 slots; Frequency: 836.6 MHz; Duty Cycle: 1:4
Medium parameters used: $f = 836.6$ MHz; $\sigma = 0.961$ S/m; $\epsilon_r = 56.698$; $\rho = 1000$ kg/m³ ;
Phantom section: Flat Section

DASY5 Configuration:

- Probe: EX3DV4 - SN3619; ConvF(8.3, 8.3, 8.3); Calibrated: 2017/9/25;
- Sensor-Surface: 1.4mm (Mechanical Surface Detection)
- Electronics: DAE4 Sn1459; Calibrated: 2017/9/15
- Phantom: SAM (30deg probe tilt) with CRP v5.0_20150321; Type: QD000P40CD; Serial: TP:1874
- Measurement SW: DASY52, Version 52.8 (8);

Area Scan (51x91x1): Interpolated grid: dx=1.500 mm, dy=1.500 mm

Maximum value of SAR (interpolated) = 0.823 W/kg

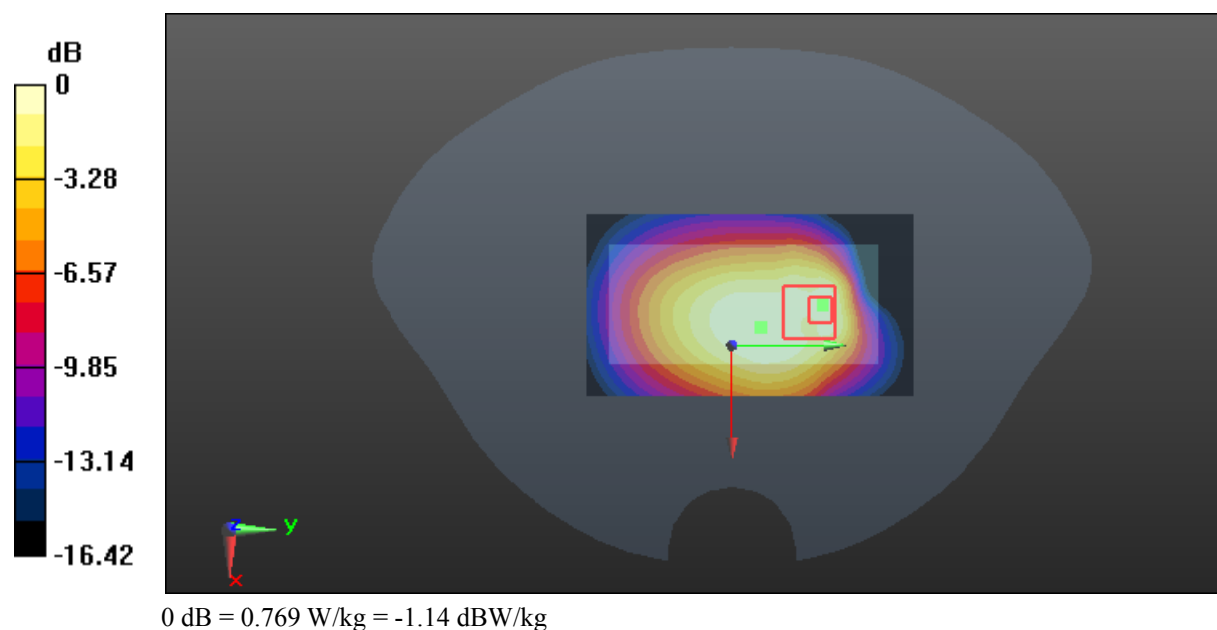
Zoom Scan (5x5x7)/Cube 0: Measurement grid: dx=8mm, dy=8mm, dz=5mm

Reference Value = 24.13 V/m; Power Drift = -0.04 dB

Peak SAR (extrapolated) = 0.942 W/kg

SAR(1 g) = 0.512 W/kg; SAR(10 g) = 0.336 W/kg

Maximum value of SAR (measured) = 0.769 W/kg



Test Plot 7#: GSM 1900_Head Left Cheek_Middle**DUT: Mobile phone; Type: AM88; Serial: 17103000221**

Communication System: Generic GSM; Frequency: 1880 MHz; Duty Cycle: 1:8
Medium parameters used: $f = 1880$ MHz; $\sigma = 1.382$ S/m; $\epsilon_r = 40.234$; $\rho = 1000$ kg/m³ ;
Phantom section: Left Section

DASY5 Configuration:

- Probe: EX3DV4 - SN3619; ConvF(6.99, 6.99, 6.99); Calibrated: 2017/9/25;
- Sensor-Surface: 1.4mm (Mechanical Surface Detection)
- Electronics: DAE4 Sn1459; Calibrated: 2017/9/15
- Phantom: SAM (30deg probe tilt) with CRP v5.0_20150321; Type: QD000P40CD; Serial: TP:1874
- Measurement SW: DASY52, Version 52.8 (8);

Area Scan (51x91x1): Interpolated grid: dx=1.500 mm, dy=1.500 mm

Maximum value of SAR (interpolated) = 0.378 W/kg

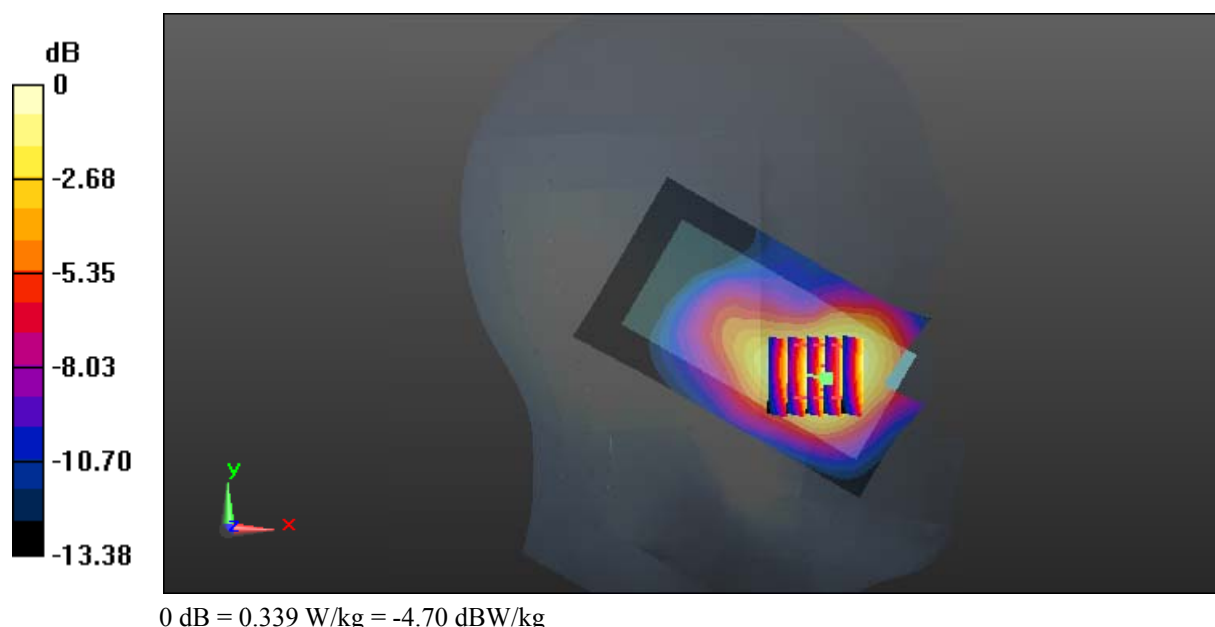
Zoom Scan (5x5x7)/Cube 0: Measurement grid: dx=8mm, dy=8mm, dz=5mm

Reference Value = 3.032 V/m; Power Drift = 0.04 dB

Peak SAR (extrapolated) = 0.383 W/kg

SAR(1 g) = 0.255 W/kg; SAR(10 g) = 0.162 W/kg

Maximum value of SAR (measured) = 0.339 W/kg



Test Plot 8#: GSM 1900_Head Left Tilt_Middle**DUT: Mobile phone; Type: AM88; Serial: 17103000221**

Communication System: Generic GSM; Frequency: 1880 MHz; Duty Cycle: 1:8

Medium parameters used: $f = 1880$ MHz; $\sigma = 1.382$ S/m; $\epsilon_r = 40.234$; $\rho = 1000$ kg/m³ ;

Phantom section: Left Section

DASY5 Configuration:

- Probe: EX3DV4 - SN3619; ConvF(6.99, 6.99, 6.99); Calibrated: 2017/9/25;
- Sensor-Surface: 1.4mm (Mechanical Surface Detection)
- Electronics: DAE4 Sn1459; Calibrated: 2017/9/15
- Phantom: SAM (30deg probe tilt) with CRP v5.0_20150321; Type: QD000P40CD; Serial: TP:1874
- Measurement SW: DASY52, Version 52.8 (8);

Area Scan (51x91x1): Interpolated grid: dx=1.500 mm, dy=1.500 mm

Maximum value of SAR (interpolated) = 0.0783 W/kg

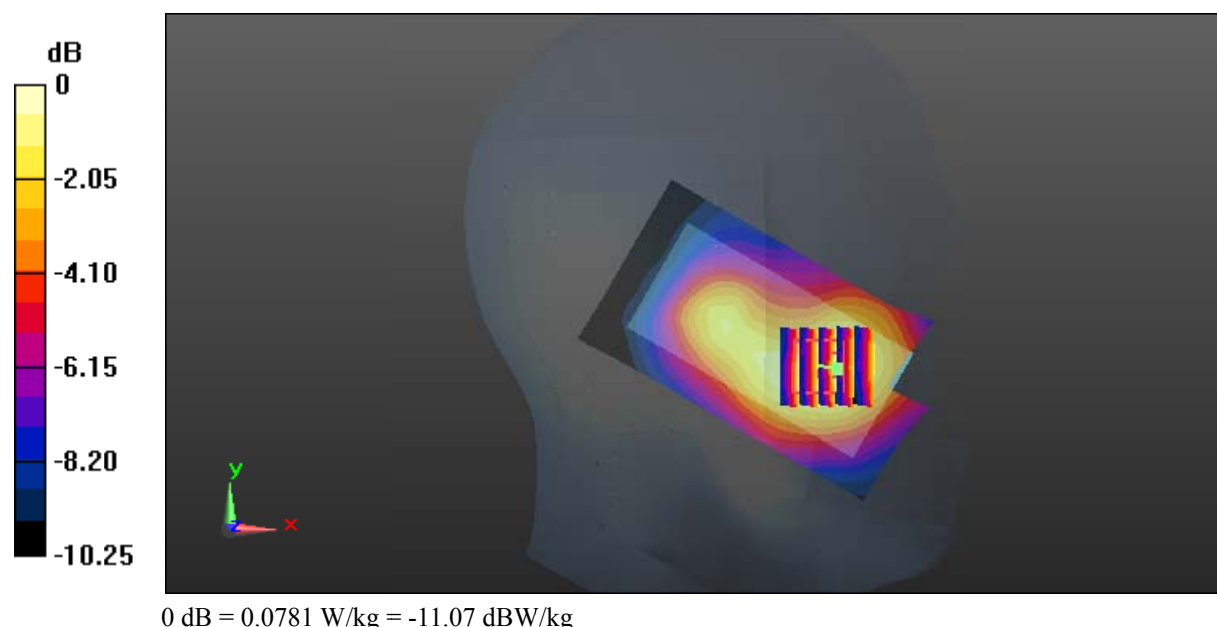
Zoom Scan (5x5x7)/Cube 0: Measurement grid: dx=8mm, dy=8mm, dz=5mm

Reference Value = 3.151 V/m; Power Drift = 0.05 dB

Peak SAR (extrapolated) = 0.0890 W/kg

SAR(1 g) = 0.059 W/kg; SAR(10 g) = 0.040 W/kg

Maximum value of SAR (measured) = 0.0781 W/kg



Test Plot 9#: GSM 1900_Head Right Cheek_Middle**DUT: Mobile phone; Type: AM88; Serial: 17103000221**

Communication System: Generic GSM; Frequency: 1880 MHz; Duty Cycle: 1:8

Medium parameters used: $f = 1880$ MHz; $\sigma = 1.382$ S/m; $\epsilon_r = 40.234$; $\rho = 1000$ kg/m³ ;

Phantom section: Right Section

DASY5 Configuration:

- Probe: EX3DV4 - SN3619; ConvF(6.99, 6.99, 6.99); Calibrated: 2017/9/25;
- Sensor-Surface: 1.4mm (Mechanical Surface Detection)
- Electronics: DAE4 Sn1459; Calibrated: 2017/9/15
- Phantom: SAM (30deg probe tilt) with CRP v5.0_20150321; Type: QD000P40CD; Serial: TP:1874
- Measurement SW: DASY52, Version 52.8 (8);

Area Scan (51x91x1): Interpolated grid: dx=1.500 mm, dy=1.500 mm

Maximum value of SAR (interpolated) = 0.391 W/kg

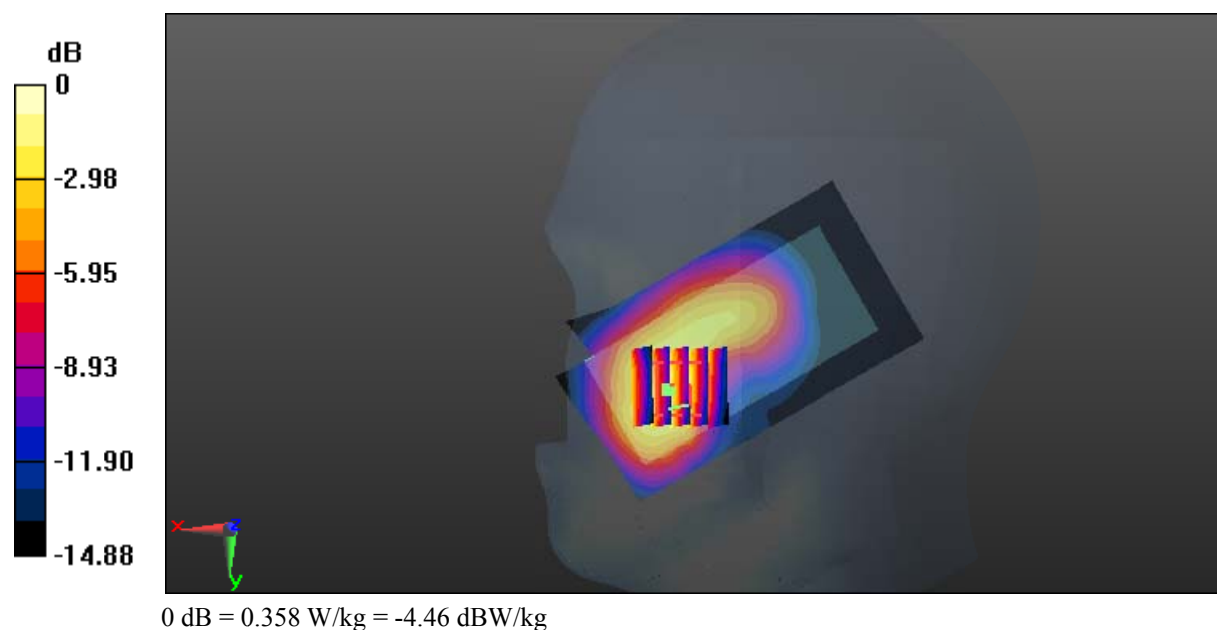
Zoom Scan (5x5x7)/Cube 0: Measurement grid: dx=8mm, dy=8mm, dz=5mm

Reference Value = 2.445 V/m; Power Drift = 0.15 dB

Peak SAR (extrapolated) = 0.422 W/kg

SAR(1 g) = 0.257 W/kg; SAR(10 g) = 0.154 W/kg

Maximum value of SAR (measured) = 0.358 W/kg



Test Plot 10#: GSM 1900_Head Right Tilt_Middle**DUT: Mobile phone; Type: AM88; Serial: 17103000221**

Communication System: Generic GSM; Frequency: 1880 MHz; Duty Cycle: 1:8
Medium parameters used: $f = 1880$ MHz; $\sigma = 1.382$ S/m; $\epsilon_r = 40.234$; $\rho = 1000$ kg/m³ ;
Phantom section: Right Section

DASY5 Configuration:

- Probe: EX3DV4 - SN3619; ConvF(6.99, 6.99, 6.99); Calibrated: 2017/9/25;
- Sensor-Surface: 1.4mm (Mechanical Surface Detection)
- Electronics: DAE4 Sn1459; Calibrated: 2017/9/15
- Phantom: SAM (30deg probe tilt) with CRP v5.0_20150321; Type: QD000P40CD; Serial: TP:1874
- Measurement SW: DASY52, Version 52.8 (8);

Area Scan (51x91x1): Interpolated grid: dx=1.500 mm, dy=1.500 mm

Maximum value of SAR (interpolated) = 0.0980 W/kg

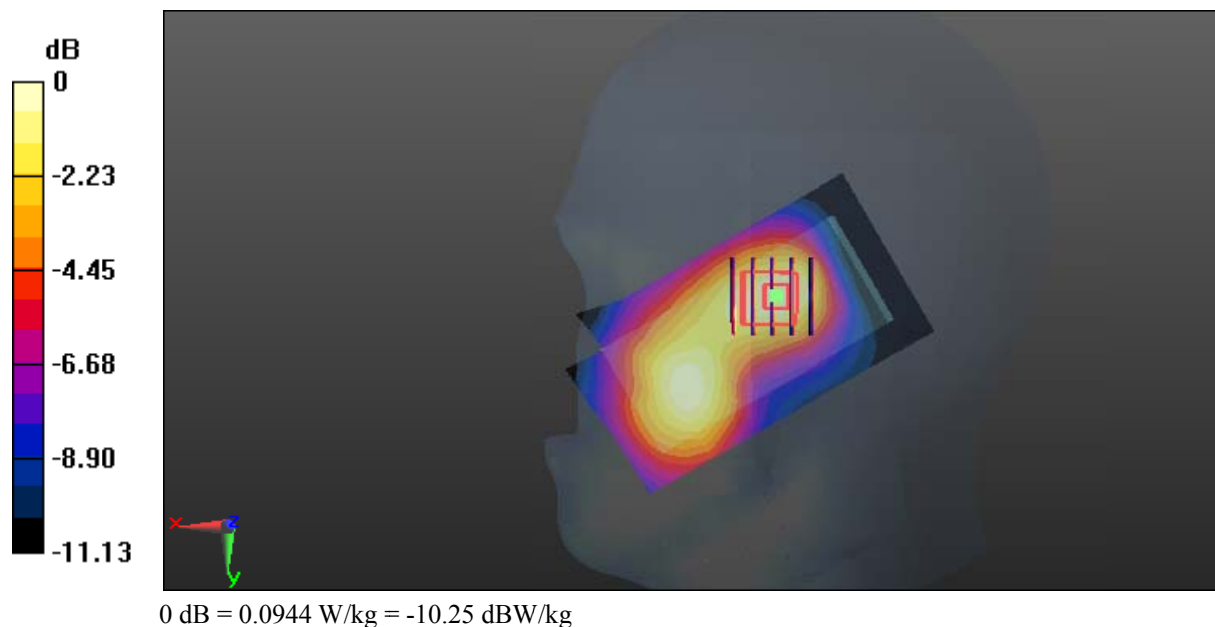
Zoom Scan (5x5x7)/Cube 0: Measurement grid: dx=8mm, dy=8mm, dz=5mm

Reference Value = 4.002 V/m; Power Drift = 0.07 dB

Peak SAR (extrapolated) = 0.107 W/kg

SAR(1 g) = 0.069 W/kg; SAR(10 g) = 0.043 W/kg

Maximum value of SAR (measured) = 0.0944 W/kg



Test Plot 11#: GSM 1900_Body Worn Back_Middle**DUT: Mobile phone; Type: AM88; Serial: 17103000221**

Communication System: Generic GSM; Frequency: 1880 MHz; Duty Cycle: 1:8
Medium parameters used: $f = 1880$ MHz; $\sigma = 1.493$ S/m; $\epsilon_r = 53.774$; $\rho = 1000$ kg/m³ ;
Phantom section: Flat Section

DASY5 Configuration:

- Probe: EX3DV4 - SN3619; ConvF(7.02, 7.02, 7.02); Calibrated: 2017/9/25;
- Sensor-Surface: 1.4mm (Mechanical Surface Detection)
- Electronics: DAE4 Sn1459; Calibrated: 2017/9/15
- Phantom: SAM (30deg probe tilt) with CRP v5.0_20150321; Type: QD000P40CD; Serial: TP:1874
- Measurement SW: DASY52, Version 52.8 (8);

Area Scan (51x91x1): Interpolated grid: dx=1.500 mm, dy=1.500 mm

Maximum value of SAR (interpolated) = 0.721 W/kg

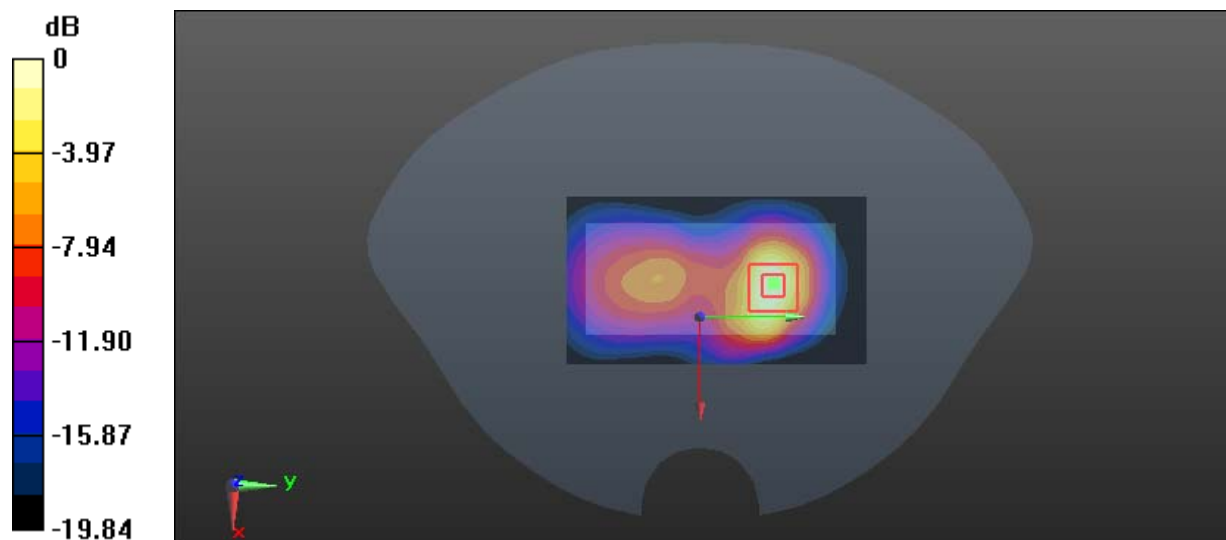
Zoom Scan (5x5x7)/Cube 0: Measurement grid: dx=8mm, dy=8mm, dz=5mm

Reference Value = 8.445 V/m; Power Drift = 0.04 dB

Peak SAR (extrapolated) = 0.873 W/kg

SAR(1 g) = 0.405 W/kg; SAR(10 g) = 0.188 W/kg

Maximum value of SAR (measured) = 0.705 W/kg



0 dB = 0.705 W/kg = -1.52 dBW/kg

Test Plot 12#: GSM 1900_Body Back_Middle**DUT: Mobile phone; Type: AM88; Serial: 17103000221**

Communication System: Generic GPRS-3 slots; Frequency: 1880 MHz; Duty Cycle: 1:2.66
Medium parameters used: $f = 1880$ MHz; $\sigma = 1.493$ S/m; $\epsilon_r = 53.774$; $\rho = 1000$ kg/m³ ;
Phantom section: Flat Section

DASY5 Configuration:

- Probe: EX3DV4 - SN3619; ConvF(7.02, 7.02, 7.02); Calibrated: 2017/9/25;
- Sensor-Surface: 1.4mm (Mechanical Surface Detection)
- Electronics: DAE4 Sn1459; Calibrated: 2017/9/15
- Phantom: SAM (30deg probe tilt) with CRP v5.0_20150321; Type: QD000P40CD; Serial: TP:1874
- Measurement SW: DASY52, Version 52.8 (8);

Area Scan (51x91x1): Interpolated grid: dx=1.500 mm, dy=1.500 mm

Maximum value of SAR (interpolated) = 1.14 W/kg

Zoom Scan (5x5x7)/Cube 0: Measurement grid: dx=8mm, dy=8mm, dz=5mm

Reference Value = 8.966 V/m; Power Drift = -0.11 dB

Peak SAR (extrapolated) = 1.38 W/kg

SAR(1 g) = 0.613 W/kg; SAR(10 g) = 0.278 W/kg

Maximum value of SAR (measured) = 1.10 W/kg

