

EXHIBIT C - EUT INTERNAL PHOTOGRAPHS

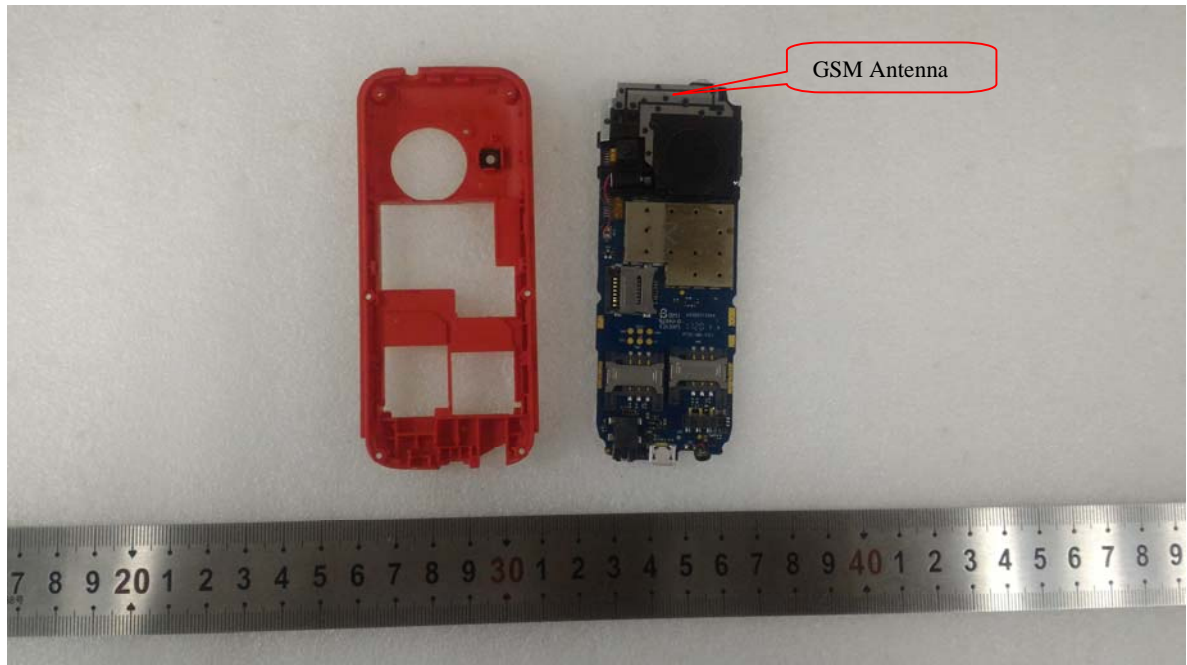
EUT – Cover off View 1



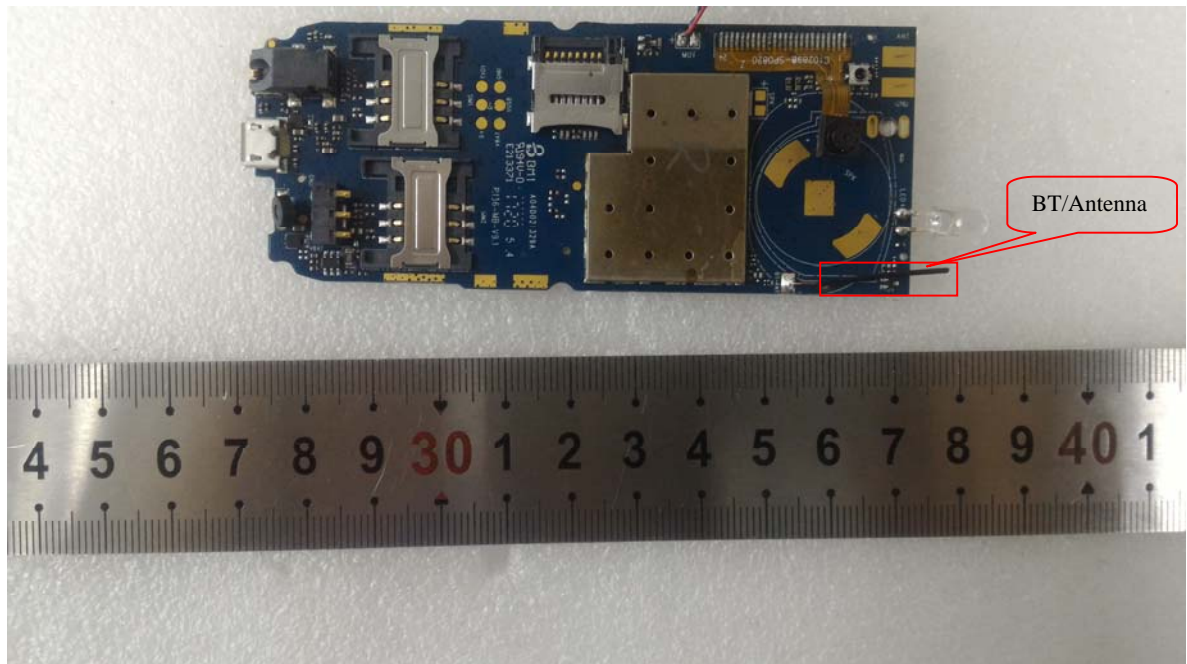
EUT – Cover off View 2



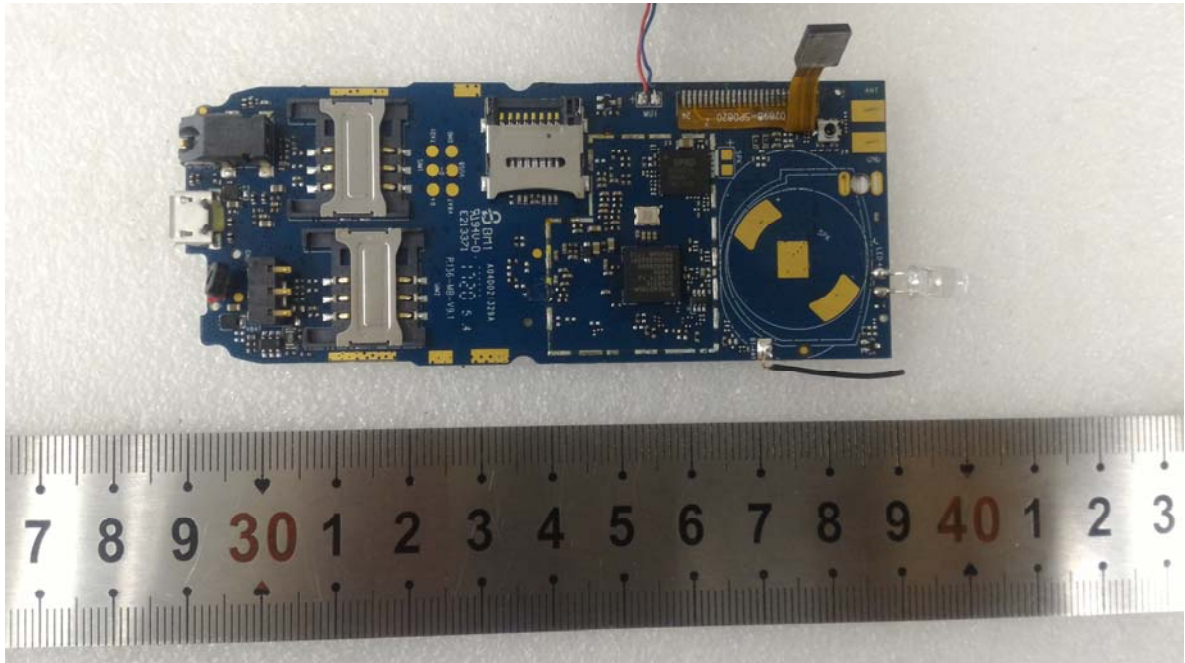
EUT – Cover off View 3



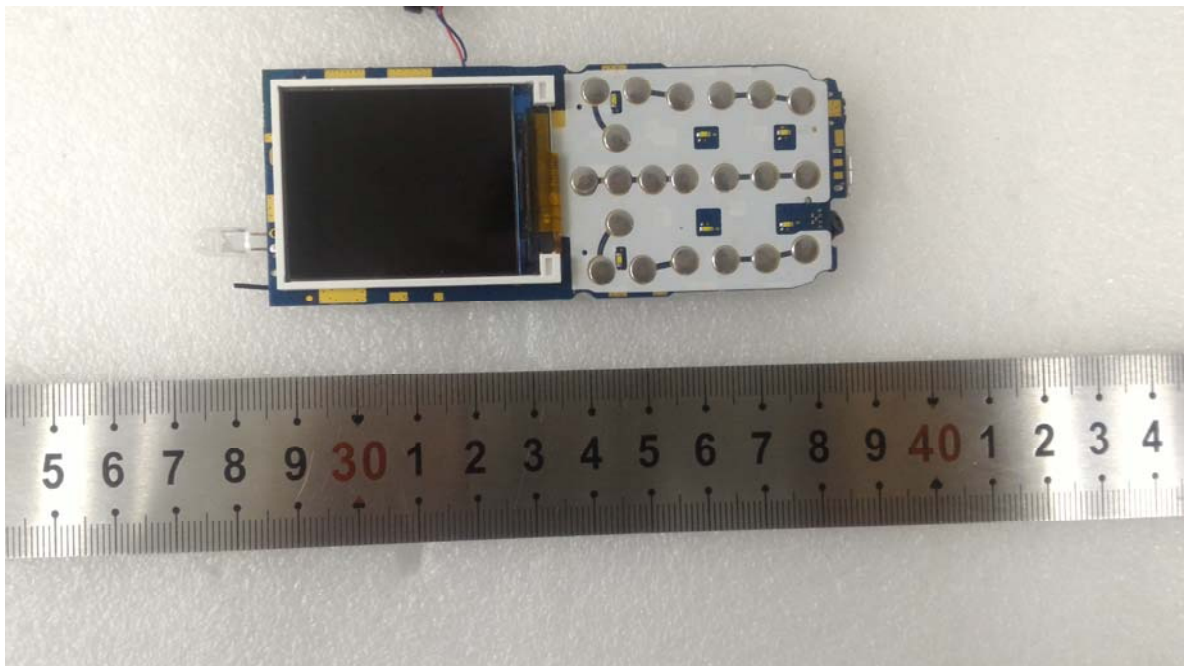
EUT – Mainboard Top View



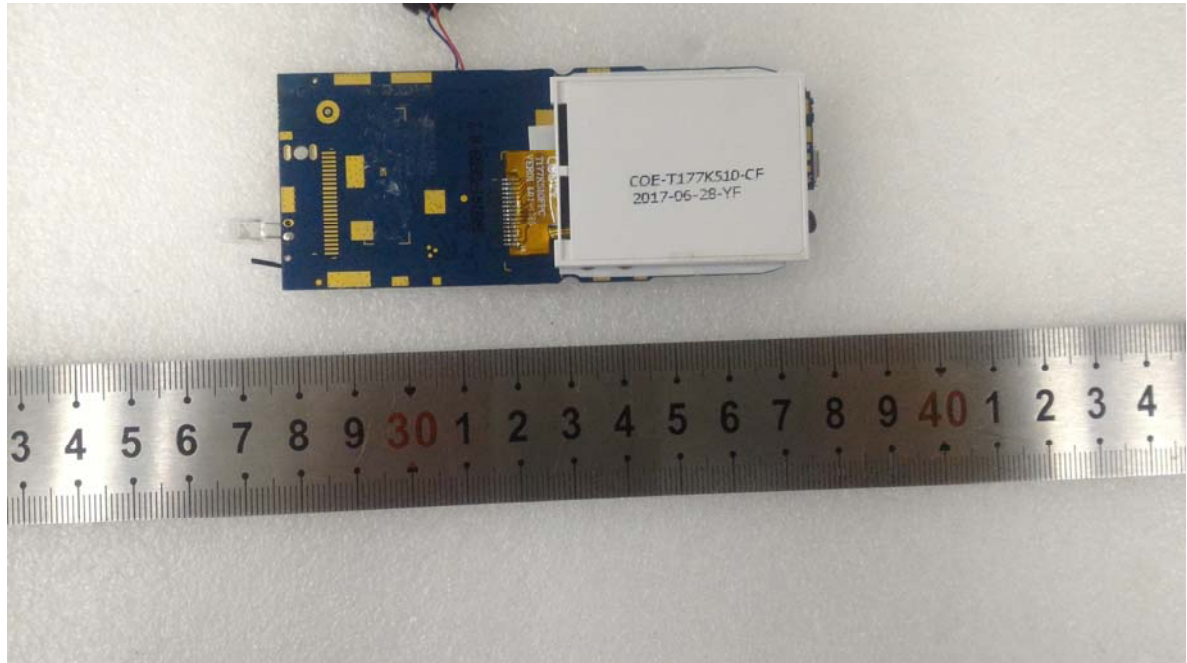
EUT – Mainboard Top Shielding off View



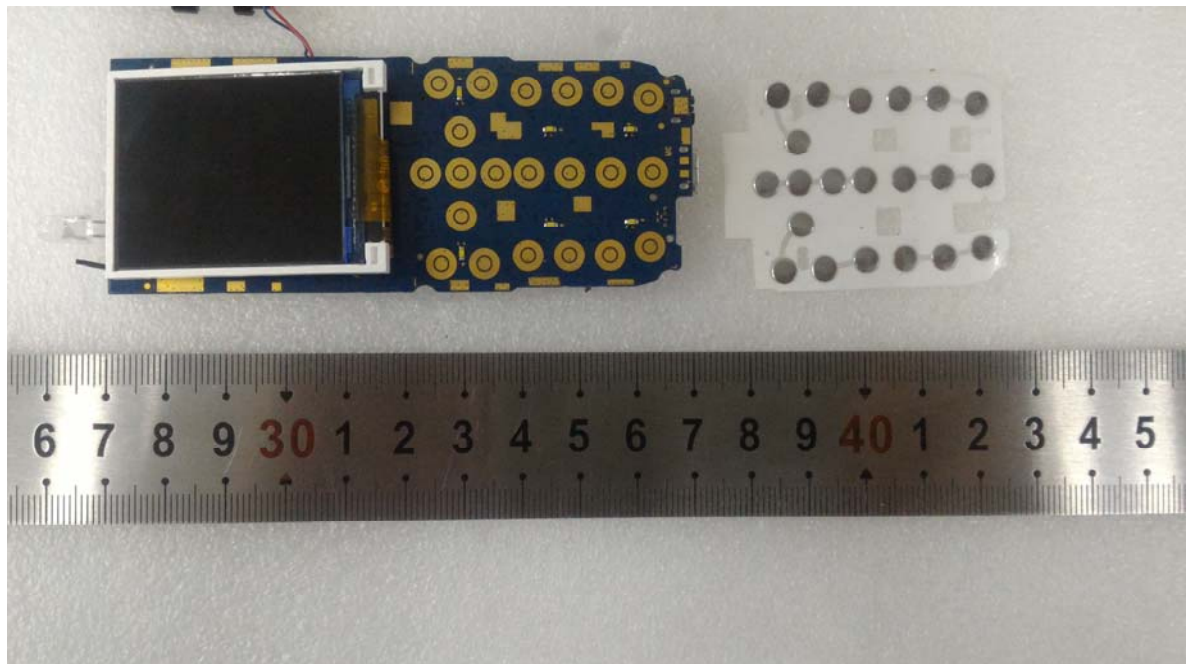
EUT – Mainboard Bottom View 1



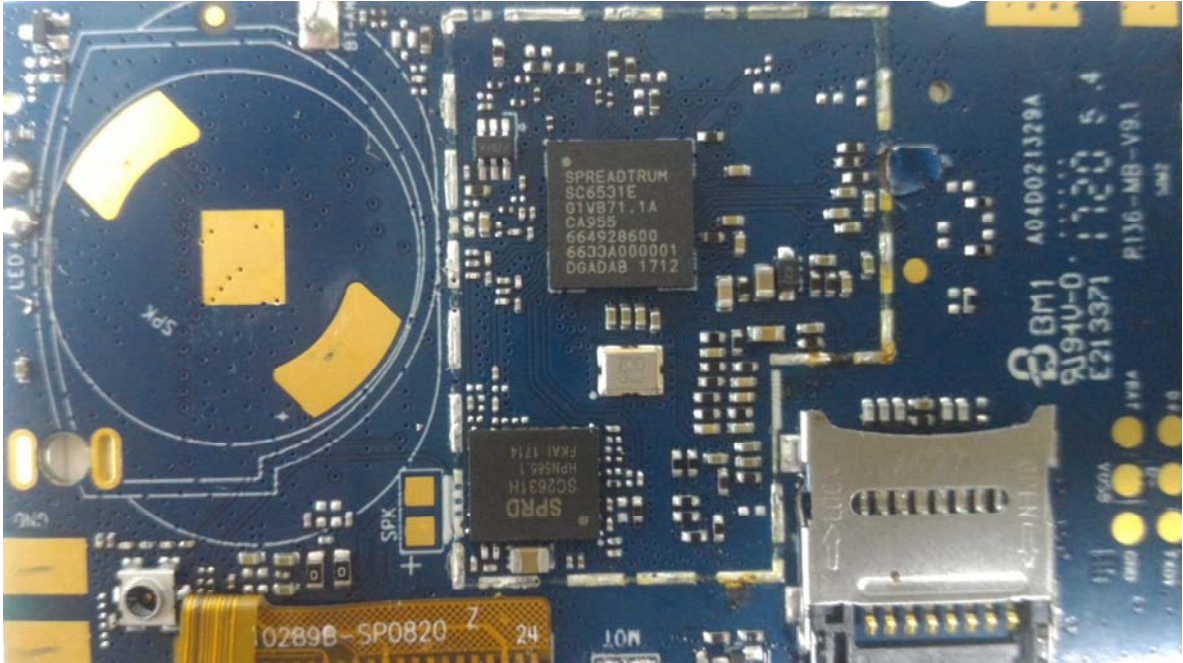
EUT – Mainboard Bottom View 2



EUT – Mainboard Bottom Shielding off View



EUT – IC Chip View



EUT – Battery View



EUT – Battery Label View

<p>CAUTION</p> <ul style="list-style-type: none">- Do not expose to high temperature (140°F/60°C).- Do not disassemble.- Do not allow metal objects to contact or short circuit the battery terminals.- Do not incinerate or expose to fire.- To dispose of properly. <p>PRECAUCION</p> <ul style="list-style-type: none">- No la exponga a altas temperaturas. 60°C(140°F)- No la desarme.- No deje objetos metálicos en contacto o corto circuito las baterías terminales.- No la incinere o exponga al fuego.- Se deshaga apropiadamente. <p>Wrong Way Turn battery over to insert. Dirección Equivocada. Inserte la batería al revés.</p>  	<p>AMGOO AM86</p> <p>800mAh/3.7V 2.96Wh</p>  <p>This Side Up</p> <p style="text-align: center;">⊖ ⊕</p>
--	---