

Internal photos

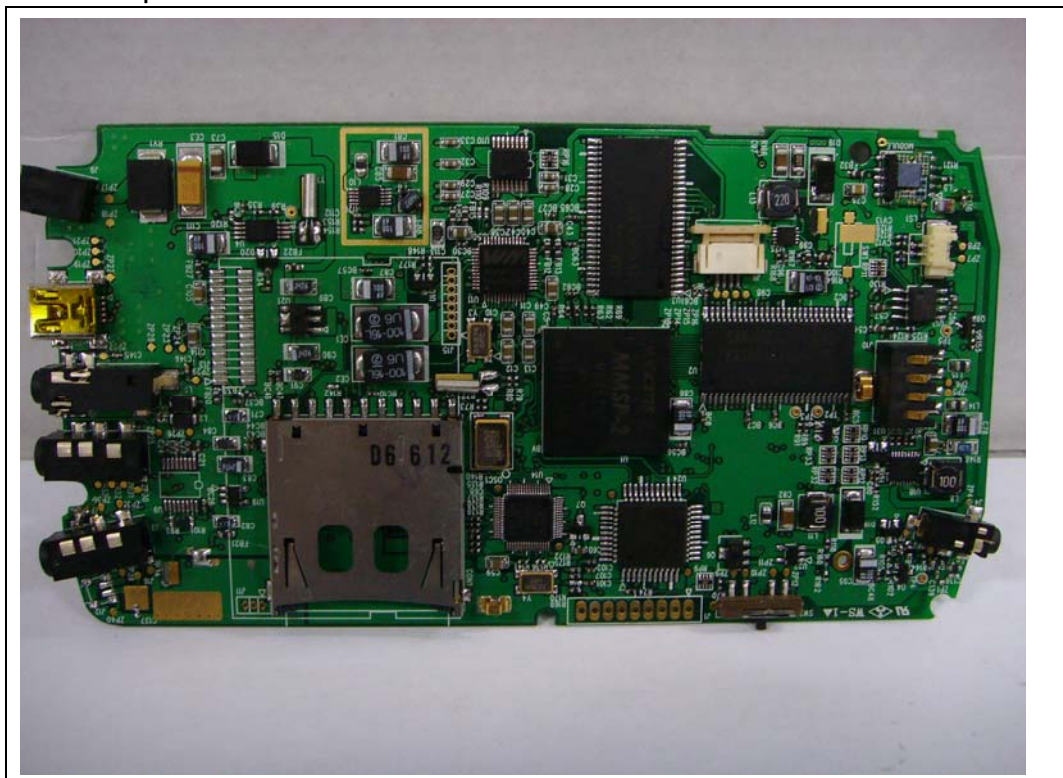


EMC Compliance Ltd.

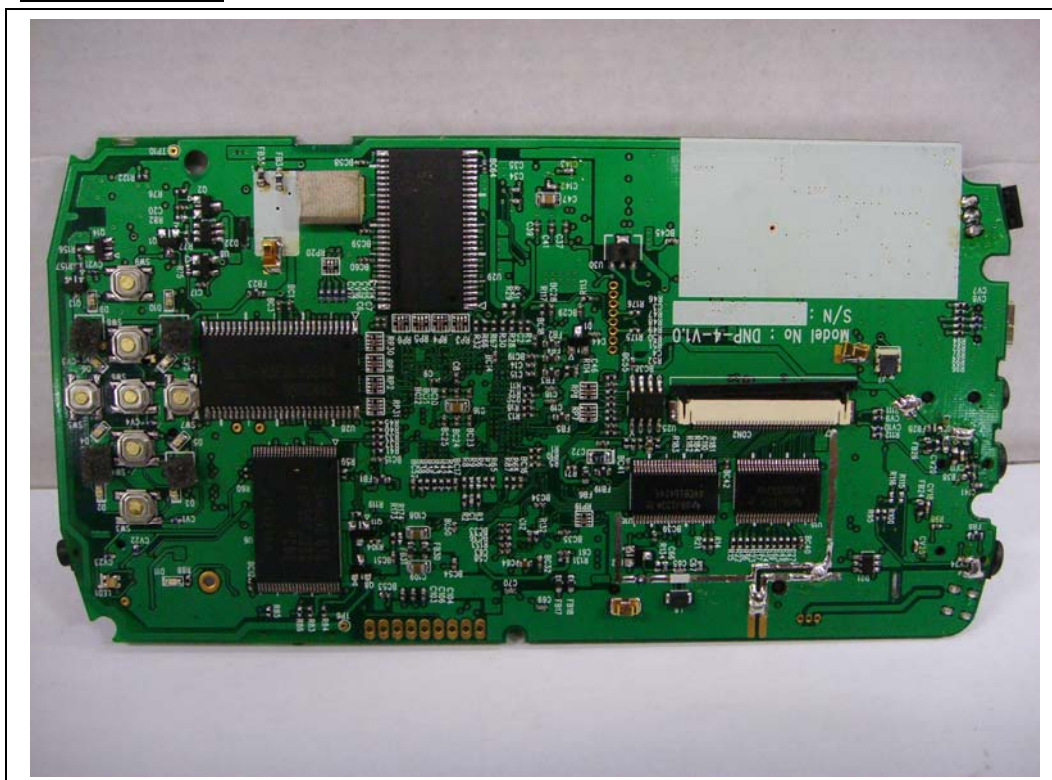
82-1 JEIL-RI, YANGJI-MYUN, YONGIN-CITY, KYUNGGI-DO 449-825, KOREA
TEL: 82 31 336 9919 FAX : 82 31 336 4767

This test report shall not be reproduced except in full, Without the written approval

Main Top



Main Bottom



EMC Compliance Ltd.

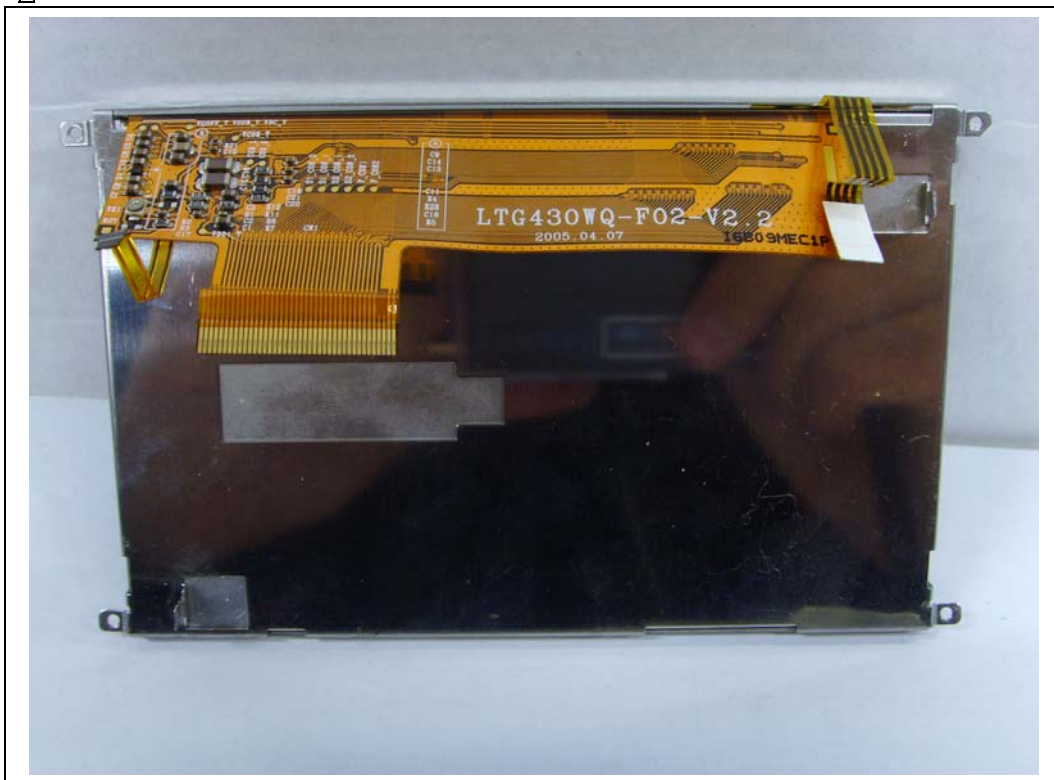
82-1 JEIL-RI, YANGJI-MYUN, YONGIN-CITY, KYUNGGI-DO 449-825, KOREA
TEL: 82 31 336 9919 FAX : 82 31 336 4767

This test report shall not be reproduced except in full, Without the written approval

LCD Top



LCD Bottom

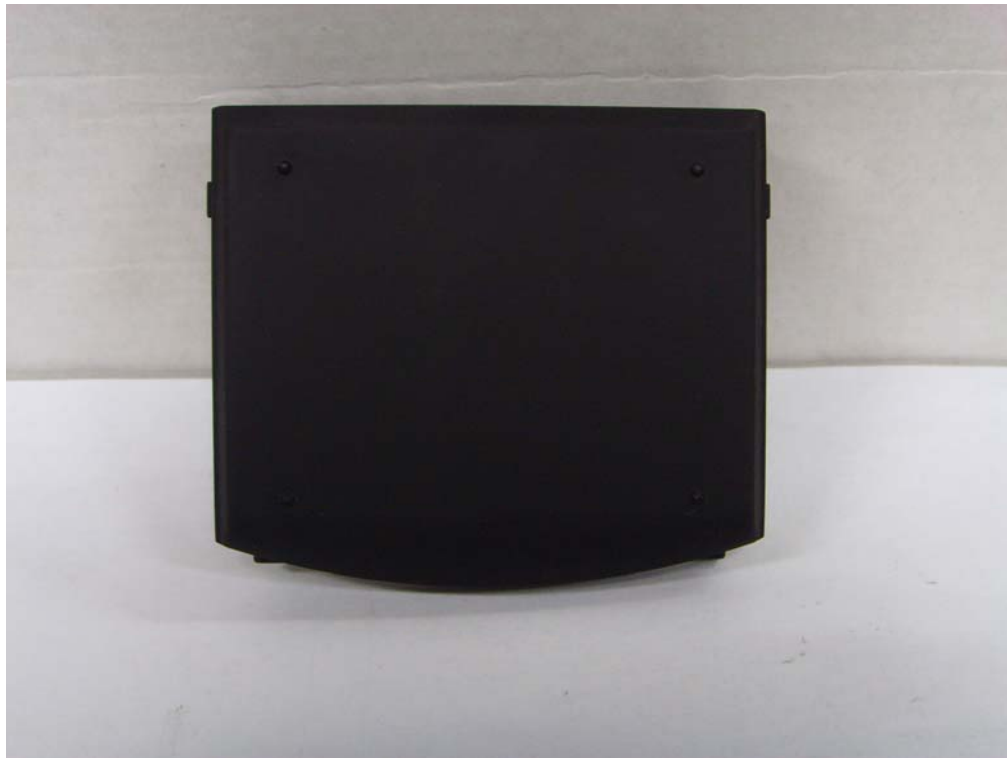


EMC Compliance Ltd.

82-1 JEIL-RI, YANGJI-MYUN, YONGIN-CITY, KYUNGGI-DO 449-825, KOREA
TEL: 82 31 336 9919 FAX : 82 31 336 4767

This test report shall not be reproduced except in full, Without the written approval

Battery Top



Battery Bottom

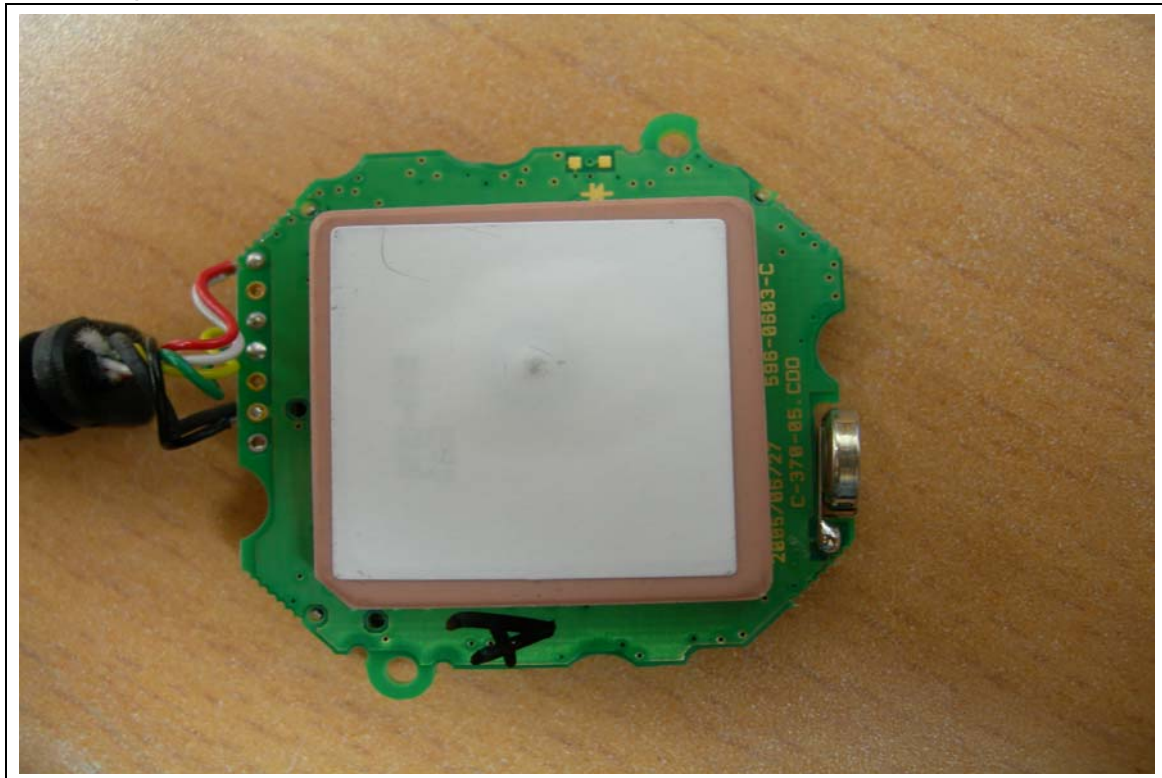


EMC Compliance Ltd.

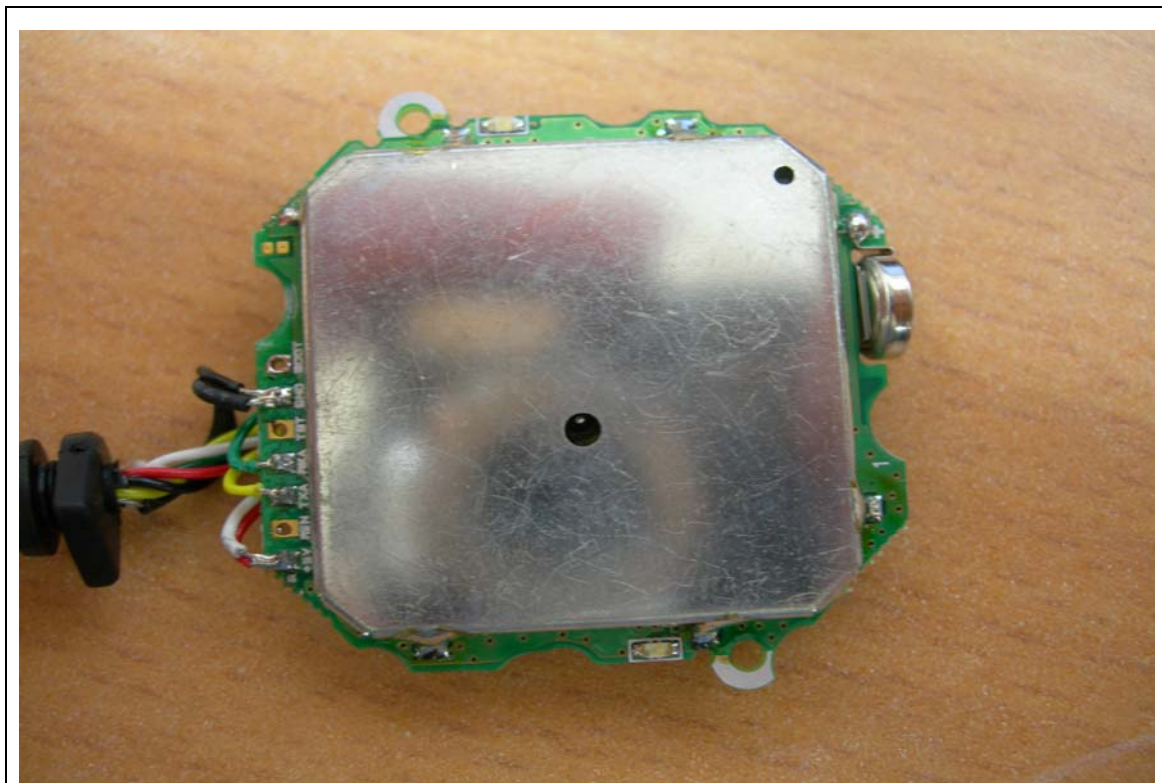
82-1 JEIL-RI, YANGJI-MYUN, YONGIN-CITY, KYUNGGI-DO 449-825, KOREA
TEL: 82 31 336 9919 FAX : 82 31 336 4767

This test report shall not be reproduced except in full, Without the written approval

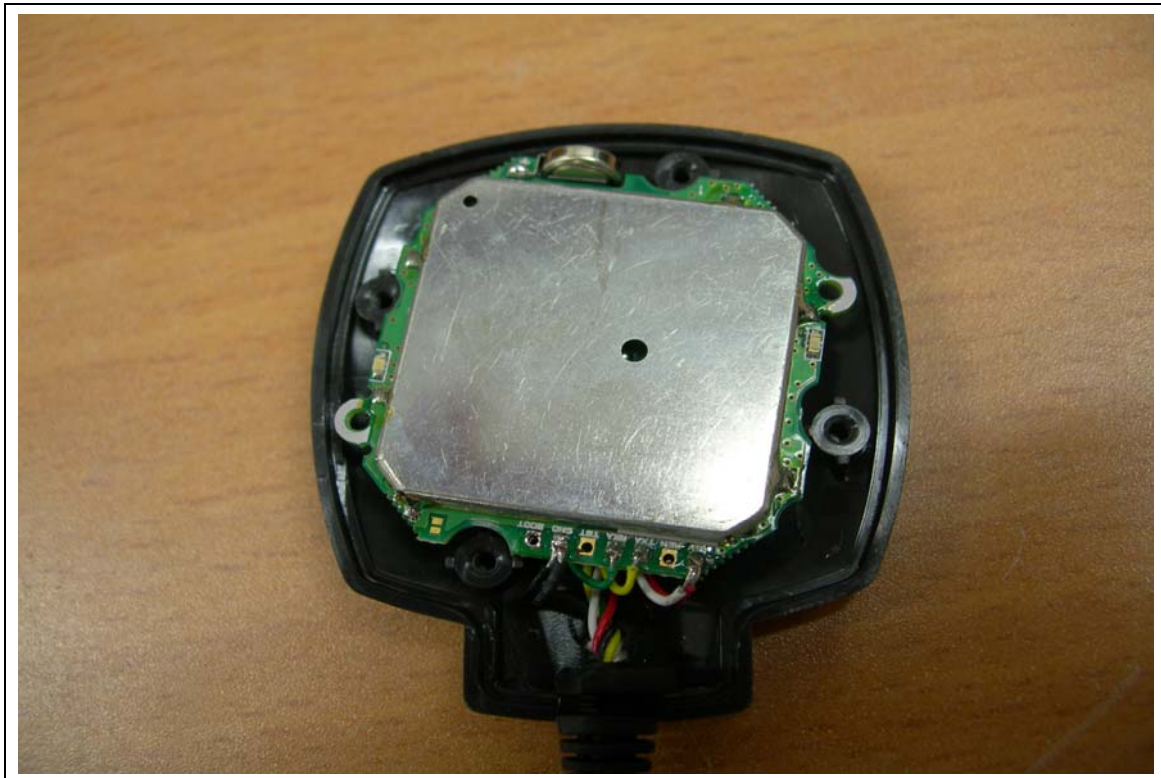
GPS Top



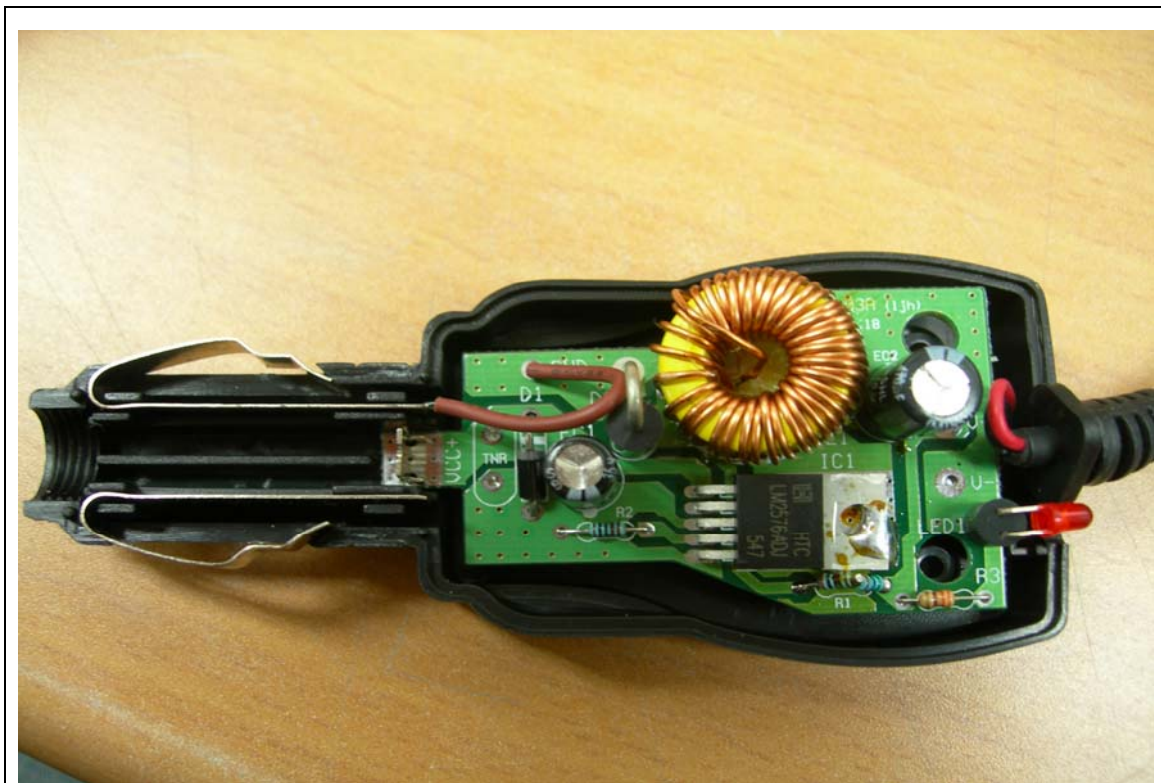
GPS Bottom



GPS Inside



GIGER JACK Inside



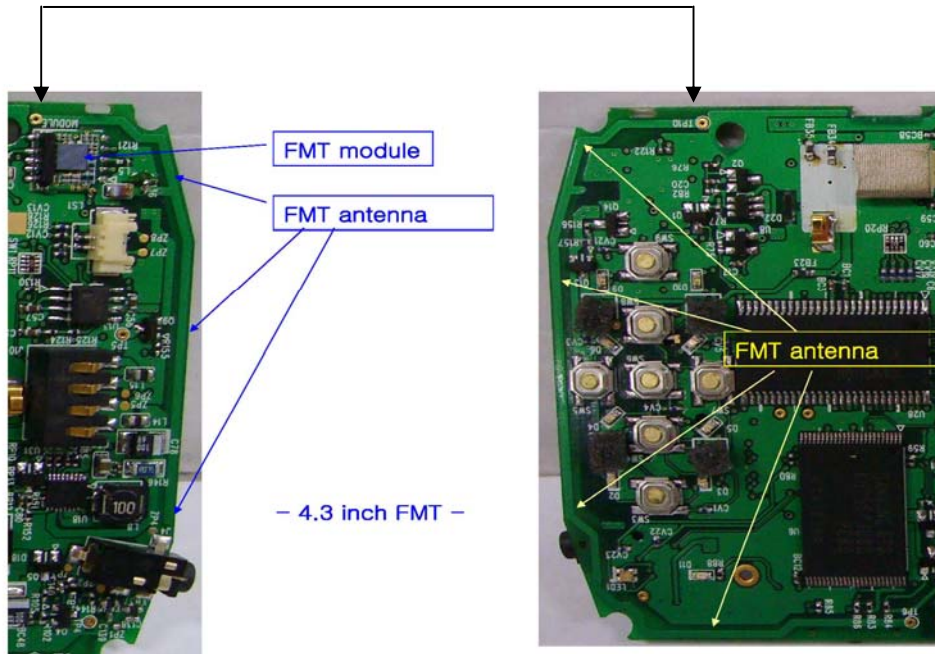
EMC Compliance Ltd.

82-1 JEIL-RI, YANGJI-MYUN, YONGIN-CITY, KYUNGGI-DO 449-825, KOREA
TEL: 82 31 336 9919 FAX : 82 31 336 4767

This test report shall not be reproduced except in full, Without the written approval

FMT

This hole is connected with a before and behind.



TOP

BOTTOM