

SF1 Interior Pictures

Main board



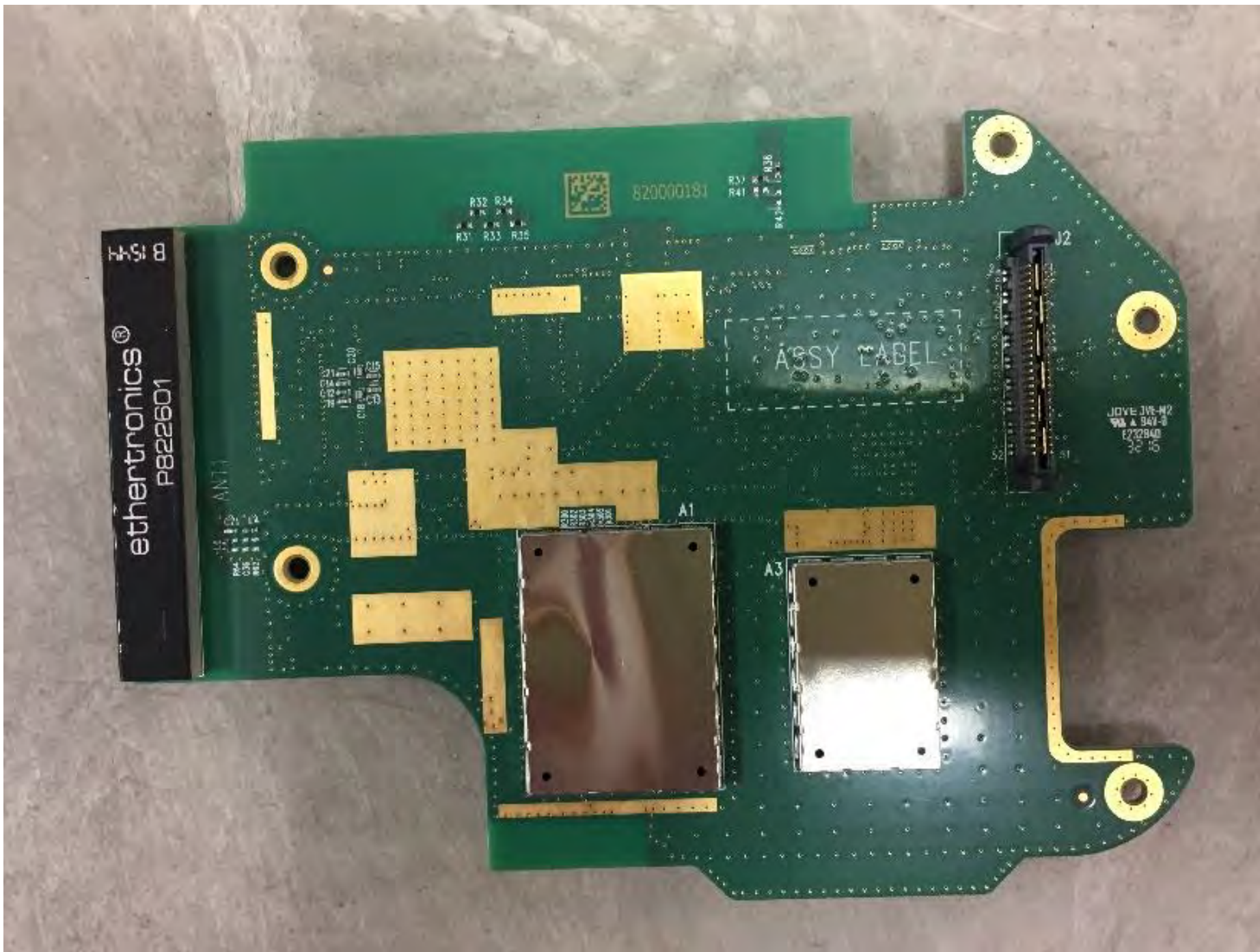
Main board



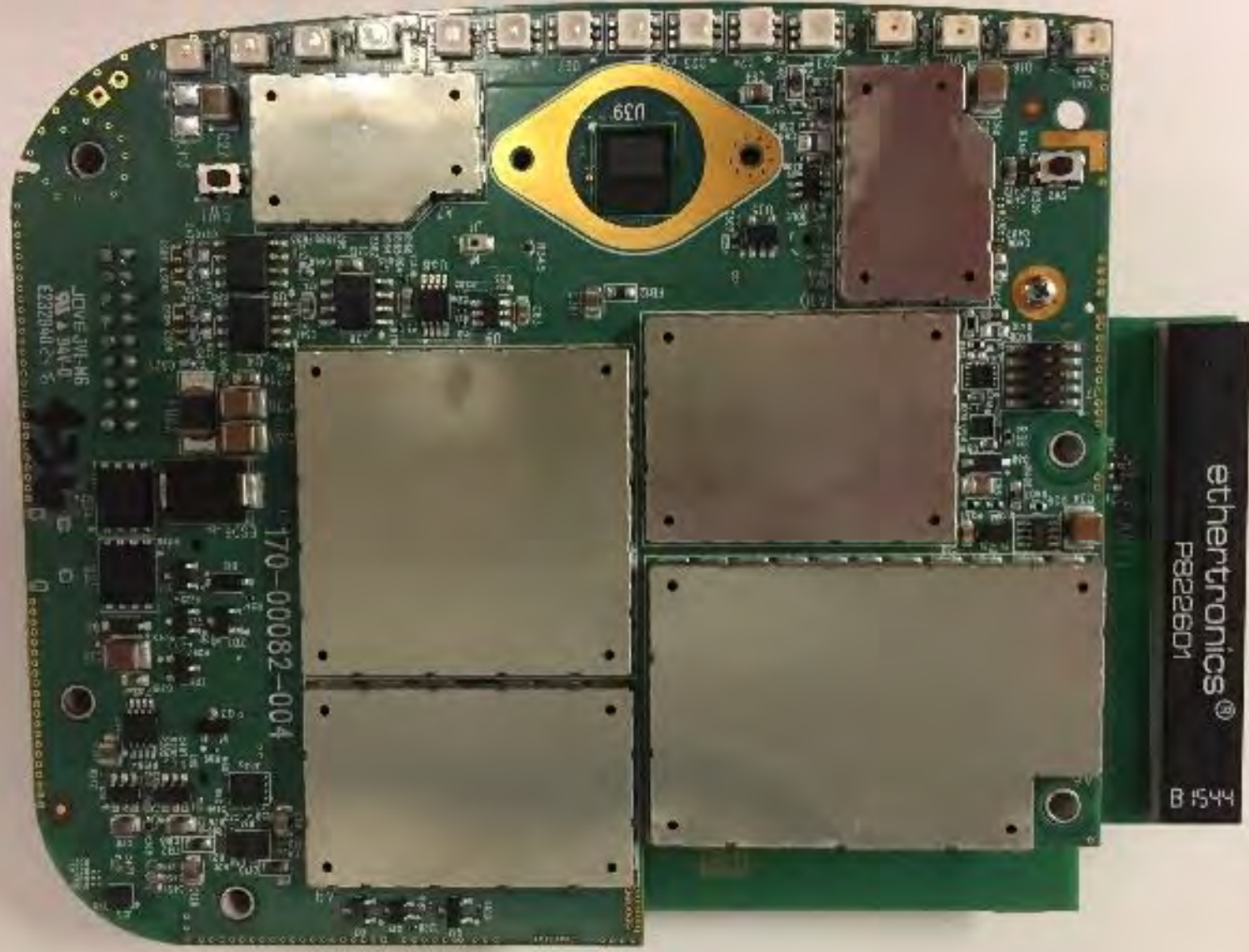
RFboard



RFboard



Mated
boards



Mated boards



No shielded RF board



No shielded RF board



ASSY L

A1

A3

R300
R302
R303
R304
R305
R301

QCA6134X-AM20
PP3MF04:E3
P3MF04
1541 TAIWAN

U302
C317
C328
C334
C320
C321
C327
C308
C307
C306
C305
C304
C303
C302
C301
C300
C299
C298
C297
C296
C295
C294
C293
C292
C291
C290
C289
C288
C287
C286
C285
C284
C283
C282
C281
C280
C279
C278
C277
C276
C275
C274
C273
C272
C271
C270
C269
C268
C267
C266
C265
C264
C263
C262
C261
C260
C259
C258
C257
C256
C255
C254
C253
C252
C251
C250
C249
C248
C247
C246
C245
C244
C243
C242
C241
C240
C239
C238
C237
C236
C235
C234
C233
C232
C231
C230
C229
C228
C227
C226
C225
C224
C223
C222
C221
C220
C219
C218
C217
C216
C215
C214
C213
C212
C211
C210
C209
C208
C207
C206
C205
C204
C203
C202
C201
C200
C199
C198
C197
C196
C195
C194
C193
C192
C191
C190
C189
C188
C187
C186
C185
C184
C183
C182
C181
C180
C179
C178
C177
C176
C175
C174
C173
C172
C171
C170
C169
C168
C167
C166
C165
C164
C163
C162
C161
C160
C159
C158
C157
C156
C155
C154
C153
C152
C151
C150
C149
C148
C147
C146
C145
C144
C143
C142
C141
C140
C139
C138
C137
C136
C135
C134
C133
C132
C131
C130
C129
C128
C127
C126
C125
C124
C123
C122
C121
C120
C119
C118
C117
C116
C115
C114
C113
C112
C111
C110
C109
C108
C107
C106
C105
C104
C103
C102
C101
C100
C99
C98
C97
C96
C95
C94
C93
C92
C91
C90
C89
C88
C87
C86
C85
C84
C83
C82
C81
C80
C79
C78
C77
C76
C75
C74
C73
C72
C71
C70
C69
C68
C67
C66
C65
C64
C63
C62
C61
C60
C59
C58
C57
C56
C55
C54
C53
C52
C51
C50
C49
C48
C47
C46
C45
C44
C43
C42
C41
C40
C39
C38
C37
C36
C35
C34
C33
C32
C31
C30
C29
C28
C27
C26
C25
C24
C23
C22
C21
C20
C19
C18
C17
C16
C15
C14
C13
C12
C11
C10
C9
C8
C7
C6
C5
C4
C3
C2
C1

U11
C55
R78

15
13

ethertronics®
P822601

55 B

ANT1

L6
R64
R63
R62

C21
C14
C12
C11
C10
C9
C8
C7
C6
C5
C4
C3
C2
C1

R32 R34
R31 R33 R35



DC820000096

R37
R41
R42
R36

ASSY LABEL

J2

2
52
51

JOVE JVE-M2
A 94V-0
E232940
2516

U301
R328
R327
R326
R325
R324
R323
R322
R321
R320
R319
R318
R317
R316
R315
R314
R313
R312
R311
R310
R309
R308
R307
R306
R305
R304
R303
R302
R301
C313
C312
C311
C310
C309
C308
C307
C306
C305
C304
C303
C302
C301
C300
C299
C298
C297
C296
C295
C294
C293
C292
C291
C290
C289
C288
C287
C286
C285
C284
C283
C282
C281
C280
C279
C278
C277
C276
C275
C274
C273
C272
C271
C270
C269
C268
C267
C266
C265
C264
C263
C262
C261
C260
C259
C258
C257
C256
C255
C254
C253
C252
C251
C250
C249
C248
C247
C246
C245
C244
C243
C242
C241
C240
C239
C238
C237
C236
C235
C234
C233
C232
C231
C230
C229
C228
C227
C226
C225
C224
C223
C222
C221
C220
C219
C218
C217
C216
C215
C214
C213
C212
C211
C210
C209
C208
C207
C206
C205
C204
C203
C202
C201
C200
C199
C198
C197
C196
C195
C194
C193
C192
C191
C190
C189
C188
C187
C186
C185
C184
C183
C182
C181
C180
C179
C178
C177
C176
C175
C174
C173
C172
C171
C170
C169
C168
C167
C166
C165
C164
C163
C162
C161
C160
C159
C158
C157
C156
C155
C154
C153
C152
C151
C150
C149
C148
C147
C146
C145
C144
C143
C142
C141
C140
C139
C138
C137
C136
C135
C134
C133
C132
C131
C130
C129
C128
C127
C126
C125
C124
C123
C122
C121
C120
C119
C118
C117
C116
C115
C114
C113
C112
C111
C110
C109
C108
C107
C106
C105
C104
C103
C102
C101
C100
C99
C98
C97
C96
C95
C94
C93
C92
C91
C90
C89
C88
C87
C86
C85
C84
C83
C82
C81
C80
C79
C78
C77
C76
C75
C74
C73
C72
C71
C70
C69
C68
C67
C66
C65
C64
C63
C62
C61
C60
C59
C58
C57
C56
C55
C54
C53
C52
C51
C50
C49
C48
C47
C46
C45
C44
C43
C42
C41
C40
C39
C38
C37
C36
C35
C34
C33
C32
C31
C30
C29
C28
C27
C26
C25
C24
C23
C22
C21
C20
C19
C18
C17
C16
C15
C14
C13
C12
C11
C10
C9
C8
C7
C6
C5
C4
C3
C2
C1

A3

U11
U12
R38
R35
R34
R33
R32
R31
R30
R29
R28
R27
R26
R25
R24
R23
R22
R21
R20
R19
R18
R17
R16
R15
R14
R13
R12
R11
R10
R9
R8
R7
R6
R5
R4
R3
R2
R1
C35
C34
C33
C32
C31
C30
C29
C28
C27
C26
C25
C24
C23
C22
C21
C20
C19
C18
C17
C16
C15
C14
C13
C12
C11
C10
C9
C8
C7
C6
C5
C4
C3
C2
C1

ethertronics®
P822601

B 1544

Sierra Wireless AirPrime
WP7504
FSN: P161160020070210
IMEI: 356207070003141
SKU: 1102711
Qualcomm
NOT FOR RESALE

xiolox
MAX-MBQ-0-01

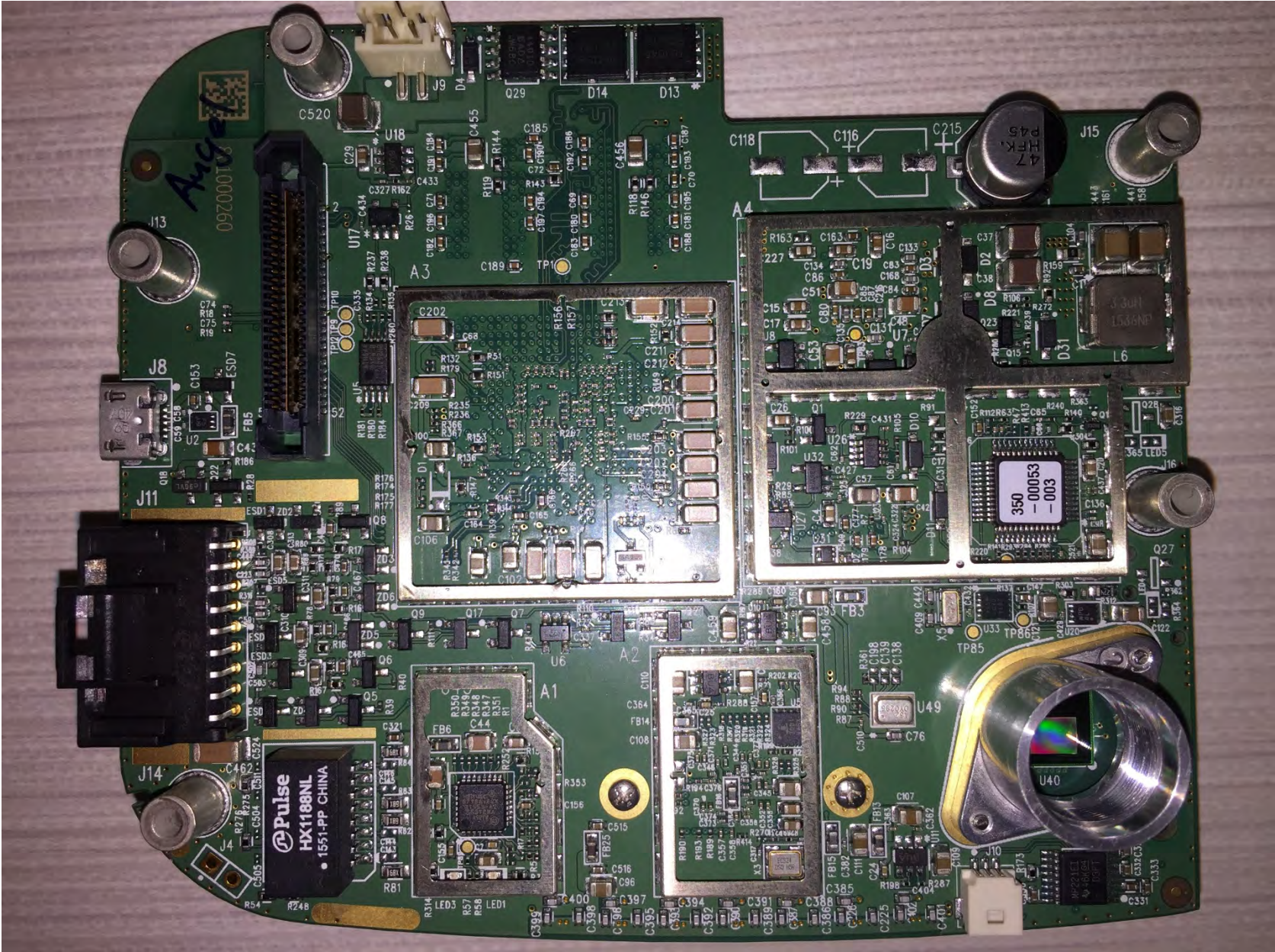
ET
1001039

ethertronics
1001039 B 1544

ANT2
170-00083-304

326







REVISION RECORD			
Ver	ECD NO.	APPROVED:	DATE:
-	-	-	-

DEBUR EDGE OF PCB FOR TEST JIGS

DEBUR EDGE OF PCB FOR TEST JIGS

J4 HOLES TO REMAIN FREE OF SOLDER (2 PLACES)

MIC: HANDLE WITH CARE

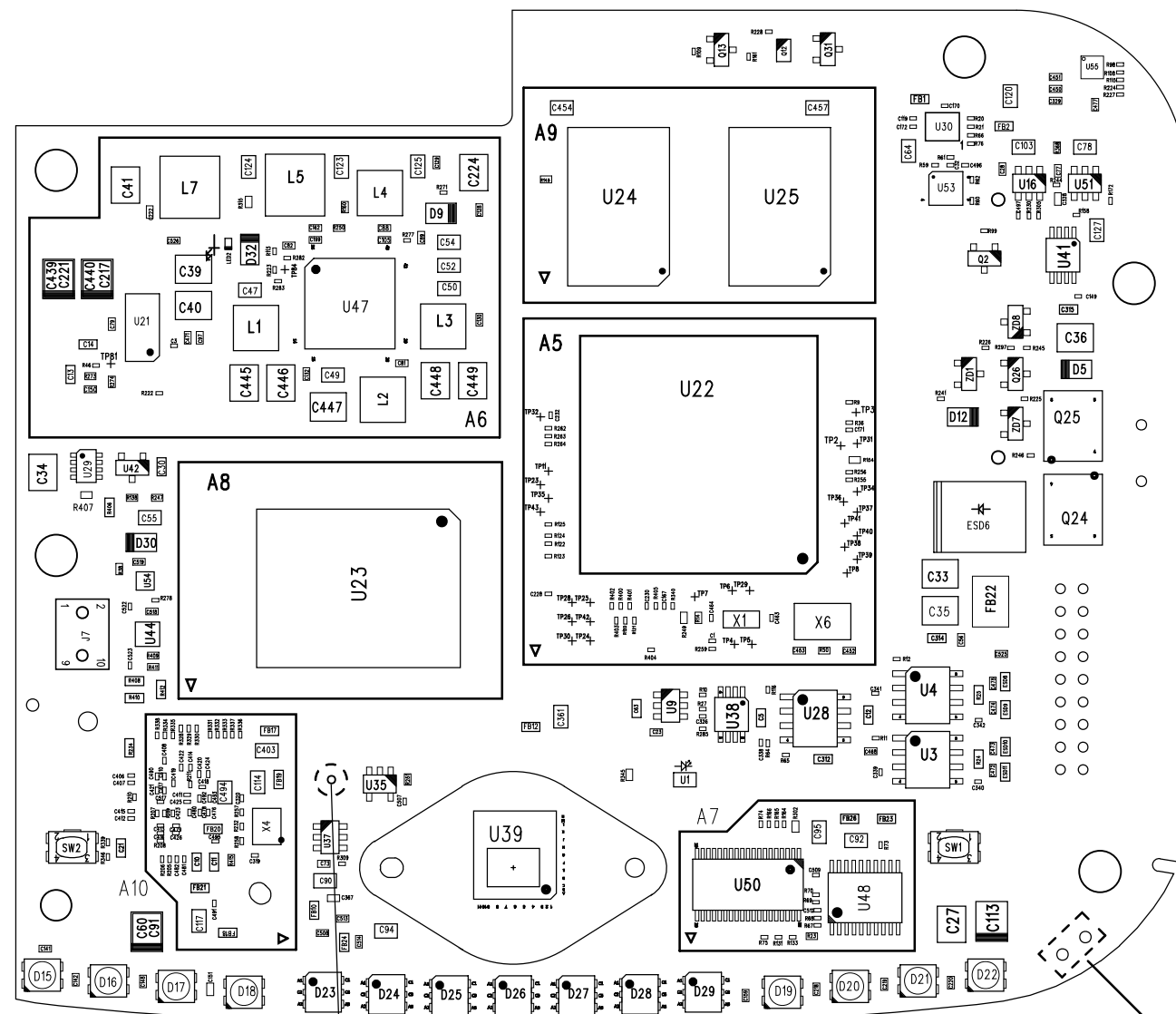
NOTES: (UNLESS OTHERWISE SPECIFIED)

1. INTERPRET DIMENSIONS AND TOLERANCES PER ASME Y14.5M-1994
2. WORKMANSHIP PER IPC-A-610, CL 2.
3. COMPONENT LEAD PROTRUSION AND COMPONENT TO PCB GAP PER IPC-A-610
4. ALL ASSEMBLY PROCESSES MUST BE ROHS COMPLIANT.

(USE WITH PCB 170-00082-005)

UNLESS OTHERWISE SPECIFIED DIMENSION ARE IN MILLIMETERS: INTERPRET GEOMETRIC TOLERANCES PER ASME Y14.5M-1994		COMPANY: lytx 9785 Towne Centre Drive SAN DIEGO, CA 92123 U.S.A.	
DRAWN: MARYANN CORMIER CHECKED: ANGEL VALDES BERND EGLER QUALITY CONTROL: RELEASED: TERRY MOLLER		TITLE: PCA, ASSEMBLY DRAWING TOPSIDE DC-FLEX LC, MAIN	
DATE: 14-JUL-2016	DATE: 14-JUL-2016	CODE:	SIZE: D/B
DATE: TBD	DATE: TBD	DRAWING NO: 005-00080-001	REV:
SCALE: NOT TO SCALE		SHEET: 1 OF 2	

REVISION RECORD			
VER	ECO NO.	APPROVED:	DATE:
-	-		



MIC HOLE:HANDLE WITH CARE

HOLES TO REMAIN FREE OF SOLDER (2 PLACES)

(USE WITH PCB 170-00082-005)

UNLESS OTHERWISE SPECIFIED DIMENSION ARE IN MILLIMETERS: INTERPRET GEOMETRIC TOLERANCES PER ASME Y14.5M-1994		COMPANY: lytx 9785 Towne Centre Drive SAN DIEGO, CA 92121 U.S.A.	
DRAWN: MARYANN CORMIER		DATE: 14-JUL-2016	
CHECKED: BERND EGLER		DATE: 14-JUL-2016	
QUALITY CONTROL:		DATE:	
RELEASED: TERRY MOLLER		DATE: TBD	
TITLE: PCB, ASSEMBLY DRAWING BOTTOMSIDE DC-FLEX LC, MAIN		CODE:	SIZE:
DRAWING NO: D/B 005-00080-001		REV:	
SCALE: NOT TO SCALE		SHEET: 2 OF 2	

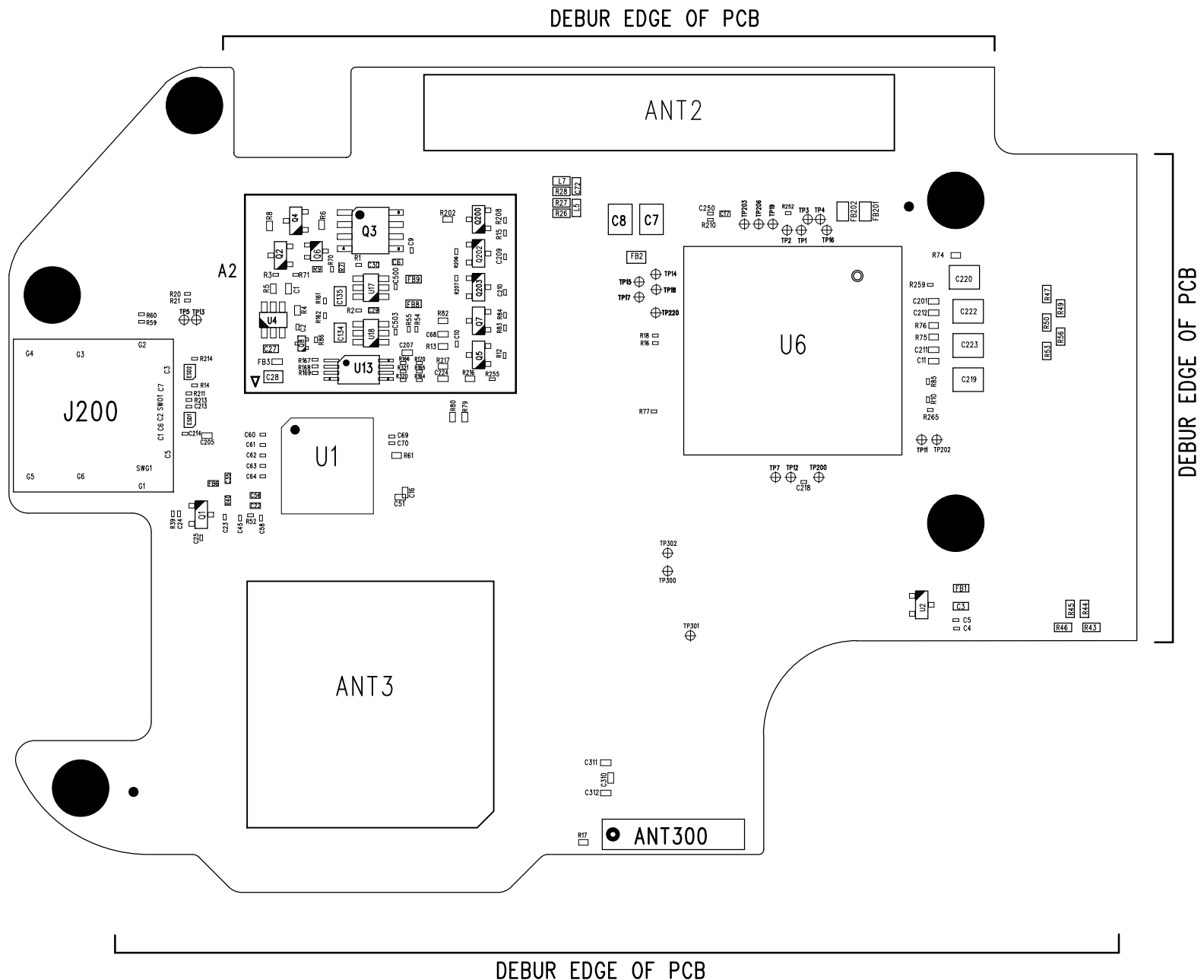
REVISION RECORD			
LTR	ECO NO.	APPROVED:	DATE:

NOTES: (UNLESS OTHERWISE SPECIFIED)

1. WORKMANSHIP PERFORMED IAW IPC-A-610 AND/OR J-STD-001.
- A. ALL SPECIFICATIONS TO BE TO THE LATEST STANDARDS.
- B. INTERPRET ALL IPC SPECIFICATIONS AS CLASS 2.
- C. INTERPRET DIMENSIONS AND TOLERANCES PER ASME Y14.5-2009 AND/OR IPC-D-325.
2. RoHS COMPLIANT MATERIALS TO BE USED FOR LEAD-FREE ASSEMBLY PROCESS.
3. COMPONENT MOUNTING PER IPC-CM-770.

D
C
B
A

D
C
B
A



(USE WITH PCB 170-00083-005)

UNLESS OTHERWISE SPECIFIED DIMENSION ARE IN MILLIMETERS: INTERPRET GEOMETRIC TOLERANCES PER ASME Y14.5M-1994		COMPANY: lytx 9785 Towne Centre Drive SAN DIEGO, CA 92121 U.S.A.	
DRAWN: MARYANN CORMIER DATE: 14-JUL-2016		TITLE: PCA, ASSEMBLY DRAWING TOPSIDE PCB, WIRELESS, LC-FLEX	
CHECKED: BERND EGLER ANGEL VALDES	DATE: 14-JUL-2016	CODE:	SIZE: D/B
QUALITY CONTROL:	DATE:	DRAWING NO: 005-00081-000 005-00082-000 005-00083-000	REV:
RELEASED: Terry Moller	DATE:	SCALE: NOT TO SCALE	SHEET: 1 OF 2

6

5

4

3

2

1

REVISION RECORD			
LTR	ECD NO.	APPROVED:	DATE:

D

D

C

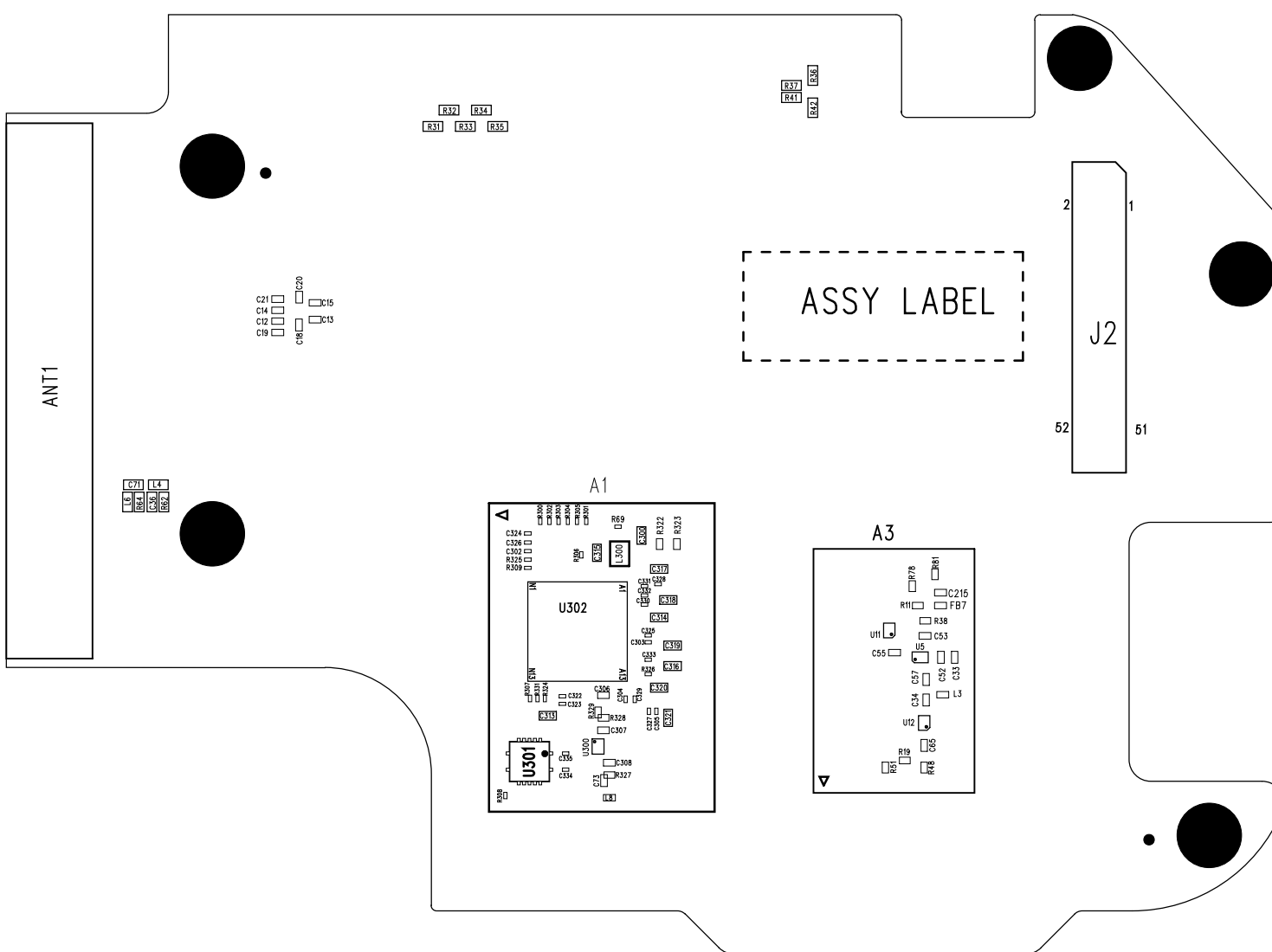
C

B

B

A

A



(USE WITH PCB 170-00083-005)

UNLESS OTHERWISE SPECIFIED DIMENSION ARE IN MILLIMETERS: INTERPRET GEOMETRIC TOLERANCES PER ASME Y14.5M-1994		COMPANY: lytx 9785 Towne Centre Drive SAN DIEGO, CA 92121 U.S.A.	
DRAWN: MARYANN CORMIER	DATE: 14-JUL-2016	TITLE: PCB, ASSEMBLY DRAWING BOTTOMSIDE PCB, WIRELESS, LC-FLEX	
CHECKED: BERND ECLER ANGEL VALDES	DATE: 14-JUL-2016	CODE:	SIZE: D/B
QUALITY CONTROL:	DATE:	DRAWING NO: 005-00081-000 005-00082-000 005-00083-000	REV:
RELEASED: Terry Moller	DATE:	SCALE: NOT TO SCALE	SHEET: 2 OF 2

6

5

4

3

2

1