



***User's Manual***  
***for***  
***SD-101***

***HONEYWLD Technology Corp.***

***Version 0.99b***

***9/7/2006***



## Table of Content

Chapter 1 Introduction.....	5
Key Features .....	5
Remote controller – SD101 .....	5
Package Contents .....	8
Maintenance and Support .....	8
Chapter 2 Connecting Your DMA Player .....	9
Connecting DMA Player.....	9
Chapter 3 Digital Media Server.....	12
Media Files Tab.....	12
Media Import Tab .....	12
System Tab.....	14
Option Tab.....	15
Chapter 4 DMA Player.....	17
Media Format.....	17
DMA Main Menu.....	17
Play Music .....	18
Play Video .....	25
Play Photo .....	34
Chapter 5 Settings .....	40
DMA Settings .....	40
Manually Setting Wireless Configuration for Hidden Network .....	44
System Settings .....	44
Version .....	45
Chapter 6 Trouble Shutting.....	48
Problem: Can't find server .....	48
Problem: The server can only be seen for a short time .....	48
Problem: Can't find IP .....	48
Problem: No Subtitle when playing "VOB" files .....	48



## Table of Figures

Fig. 1-1 Remote controller – SD101 .....	6
Fig. 2-1 DMA Rear View, Cable Connection .....	10
Fig. 2-2 DMA Home .....	10
Fig. 3-1 Media Files Tabs .....	12
Fig. 3-2 Media Import – 1 .....	13
Fig. 3-3 Media Import – 2 .....	13
Fig. 3-4 System Tab-1 .....	14
Fig. 3-5 System Tab - 2 .....	15
Fig. 3-6 Option Tab .....	15
Fig. 4-1 DMA main page .....	17
Fig. 4-2 Music Server List .....	18
Fig. 4-3 Music Files List .....	18
Fig. 4-4 Play Music .....	19
Fig. 4-5 Prev. Music File .....	19
Fig. 4-6 Next Music File .....	19
Fig. 4-7 Music Fast Forward .....	20
Fig. 4-8 Music Fast Backward .....	21
Fig. 4-10 Music Mute .....	21
Fig. 4-11 Music Repeat One .....	21
Fig. 4-12 Music Repeat All .....	22
Fig. 4-13 Music Repeat Off .....	22
Fig. 4-14 Music Pause .....	22
Fig. 4-15 Music AB mode “A” .....	23
Fig. 4-16 Music AB mode “A-B” .....	23
Fig. 4-17 Music Add to BGM .....	24
Fig. 4-18 Music Remove from BGM .....	24
Fig. 4-19 Music -- My Favorite .....	24
Fig. 4-20 Music BGM + Slideshow .....	25
Fig. 4-21 Video Server List .....	26
Fig. 4-22 Video File List .....	26
Fig. 4-23 Play Video .....	26
Fig. 4-24 Prev. Video File .....	27
Fig. 4-25 Next Video File .....	27
Fig. 4-26 Video Fast Forward .....	28
Fig. 4-27 Video Fast Backward .....	28
Fig. 4-30 Video Repeat One .....	29



<b>Fig. 4-32 Video Repeat Off</b> .....	30
<b>Fig. 4-33 Video Pause</b> .....	30
<b>Fig. 4-36 Video Subtitle</b> .....	31
<b>Fig. 4-37 Video Language</b> .....	32
<b>Fig. 4-38 Video AB mode-A</b> .....	32
<b>Fig. 4-39 Video AB mode-B</b> .....	32
<b>Fig. 4-40 Video Info I</b> .....	33
<b>Fig. 4-42 Video browser</b> .....	33
<b>Fig. 4-43 Photo Server List Mode</b> .....	34
<b>Fig. 4-47 Photo Thumbnail Folder List</b> .....	35
<b>Fig. 4-48 Photo Single Play</b> .....	36
<b>Fig. 4-51 Photo Zoom Out</b> .....	37
<b>Fig. 5-1 Setup Main Menu</b> .....	40
<b>Fig. 5-2 Cable Network Setting</b> .....	41
<b>Fig. 5-3 Setting about Client Mode</b> .....	42
<b>Fig. 5-4 Client Mode – Wireless Setup</b> .....	42
<b>Fig. 5-5 Client Mode – ESSID Scan</b> .....	43
<b>Fig. 5-6 Client Mode – Input ESSID manual</b> .....	43
<b>Fig.5-7 Security Setting</b> .....	44
<b>Fig. 5-8 System Setting</b> .....	45
<b>Fig. 5-9 Reset to Default -1</b> .....	46
<b>Fig. 5-10 Reset to Default -2</b> .....	46
<b>Fig. 5-11 Searching Firmware</b> .....	46
<b>Fig. 5-12 Confirm to upgrade</b> .....	47
<b>Fig. 5-13 Do not power off</b> .....	47
<b>Fig. 5-14 Upgrade Finished</b> .....	47



## **Important Safety Information**

- Read these instructions.
- Keep these instructions.
- Heed all instructions.
- Do not use this apparatus near water.
- Clean only with dry cloth.
- Do not install near any heat sources such as radiators, stoves, or other apparatus (including amplifiers) that produce heat.
- Unplug this apparatus during lightning storms or when unused for long periods of time.
- Ensure that you read this manual carefully and keep it in a safe place for future reference.

## **Chapter 1 Introduction**

### **Key Features**

---

The DMA Player provides the following features:

- DVD Playback with MPEG 1/2/4 features
- Wireless networking 802.11g or 802.11b, or wired LAN Ethernet.
- Wireless client mode support.
- Wired Ethernet support
- Easy Media server installation.
- Simple menus displayed on your television for DMA installation and management.
- Use the remote to browse selections displayed on your television screen and to listen to music, watch videos, or view figures.

### **Remote controller – SD101**

---

Use remote controller to select and view pictures or videos, or listen to music on your television and stereo system.

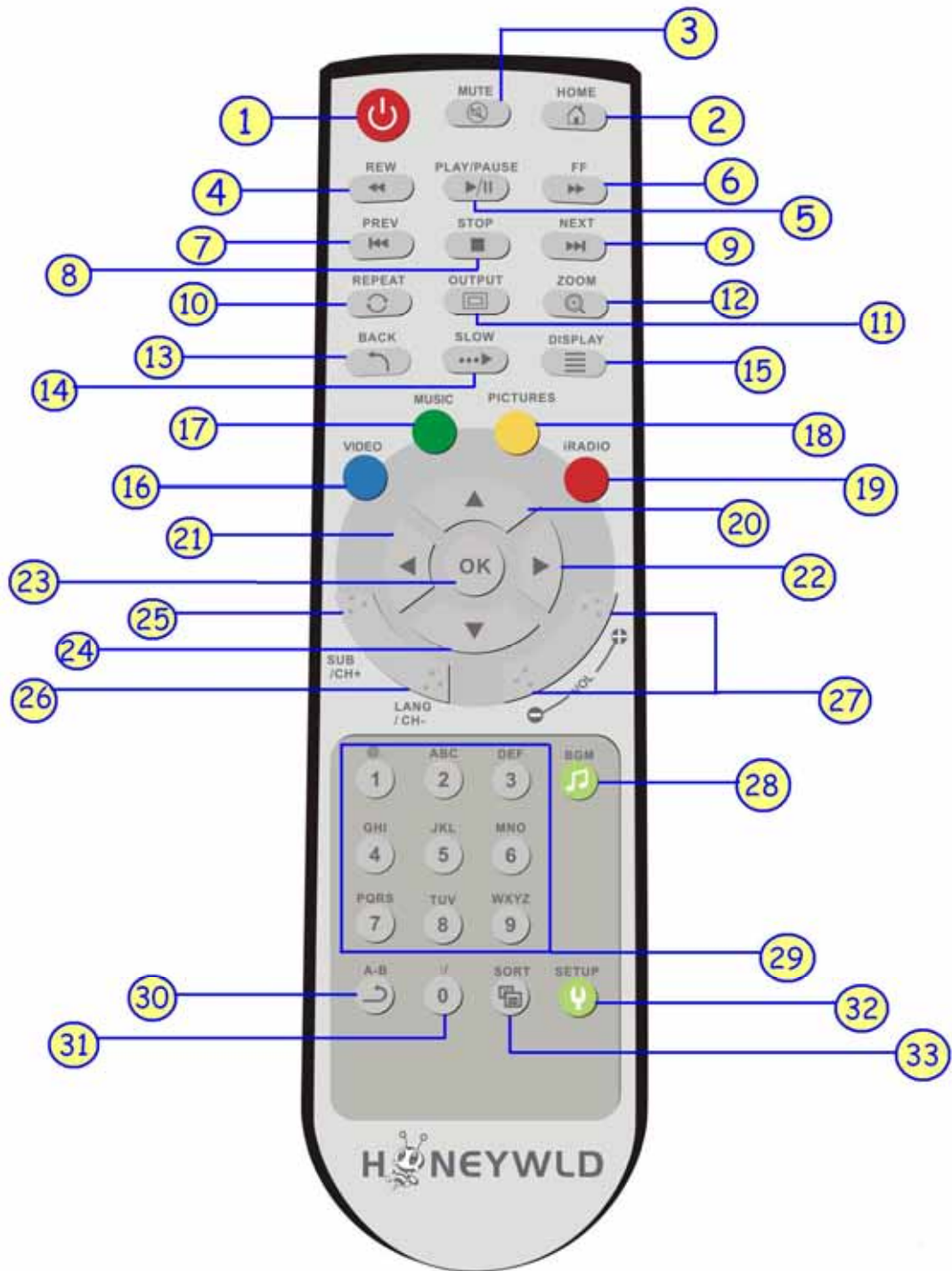


Fig. 1-1 Remote controller – SD101

**DMA Player Remote controller Keypad Function Description**

No.	KEYPAD	FUNCTION DESCRIPTION
1	<b>POWER</b>	Power On/Off the DMA player
2	<b>HOME</b>	Hotkey to return to the DMA Main Menu.
3	<b>MUTE</b>	Press to mute and cancel muteness.



4	<b>REWIND</b>	Trick mode to backward the media play for different speed (2x, 4x, 8x... etc.)
5	<b>PLAY / PAUSE</b>	Press once to play media files, and press again to pause it.
6	<b>FAST FORWARD</b>	Trick mode to fast forward the media play for different speed (2x, 4x, 8x... etc.)
7	<b>PREV</b>	1. Skip to the previous page when browsing media files. 2. Skip to previous file when playing media files.
8	<b>STOP</b>	Stop media play.
9	<b>NEXT</b>	1. Skip to the next page when browsing media files. 2. Skip to next file when playing media files.
10	<b>REPEAT</b>	1. Video & Music: Press to select repeat the same video file or repeat all video files in same folder, or disable the repeat function. 2. Photo: Enable or Disable the slideshow playing.
11	<b>OUTPUT</b>	Switch the video output type between "S-Video", "Y'PbPr", and "composite".
12	<b>ZOOM</b>	Zoom a Figure
13	<b>BACK</b>	1. Press to return to previous folder. 2. Prompt to save/cancel DMA configuration change and return to upper layer of menu in SETUP mode.
14	<b>SLOW</b>	Trick mode to slow forward the media play for different speed (1/2x, 1/4x, 1/8x... etc.)
15	<b>DISPLAY</b>	1. Video: Display the media name and media type. 2. Photo: Display media name and resolution
16	<b>VIDEO hotkey</b>	Press to jump to VIDEO mode
17	<b>MUSIC hotkey</b>	Press to jump to MUSIC mode
18	<b>PICTURES hotkey</b>	Press to jump to PHOTO mode
19	<b>Internet Radio hotkey</b>	Press to jump to Internet Radio mode
20,21, 22,24	<b>DIRECTION Buttons</b>	1. Video/Audio/Photo: Press "<" to stop current mode return to former layer; Press ">" to enter a selected folder or server. 2. Video Mode: Press up "^" or down "~" button brings up the OSD browser while playing video content 3. Photo Mode: Move the screen or the picture which is zoomed up/down/left/right. 4. Music Mode: Press up "^" to skip to previous music file or press down "~" button to skip to next music file.
23	<b>OK</b>	Press this button to enter the item that focus on.
25, 26	<b>SUBTITLE &amp; LANGUAGE</b>	Select different subtitles and languages when play video files.
27	<b>VOLUME +/-</b>	To control the master volume of the player. Increase/Decrease the volume.
28	<b>BGM</b>	You can add a music file as your favorite and play it as background music by this button.
29	<b>NUMBER Buttons</b>	Input number with the key value.
30	<b>A-B</b>	1. Repeat a chosen section (A-B). Set the beginning of the section, when pressing the button at the first time. 2. Set the ending of the section by pressing this button again. 3. Cancel repeating when pressing this button at the third time.
31	<b>:/</b>	Hotkey for key-in URL
32	<b>SETUP</b>	Bring up the DMA player's Setup Menu. Use UP "^", DOWN "~" to select setup item, and use Left "<" and Right ">" button to toggle to browse the configuration.
33	<b>SORT</b>	Hotkey for sorting the file list.



## **Package Contents**

The product package should contain the following items:

- DMA.
- Remote controller (2AA batteries included).
- Power cable, localized to country of sale.
- Category 5 (CAT5) Ethernet cable.
- S-Video to Ypbpr cable.
- Composite Video cable and Audio cable.
- DMA Installer CD, including:
  - This User Manual
  - The Installation Guide.
- DMA Installation Guide.
- Warranty/Support Information card.

If any of the parts are incorrect, missing, or damaged, contact your dealer. Keep the carton, including the original packing materials, in case you need to return the router for repair.

## **Maintenance and Support**

DMA offers the following features to help you maximize your use of the DMA Player:

- Flash memory for firmware upgrades.





## Chapter 2 Connecting Your DMA Player

### Connecting DMA Player

---

1. Make sure that you have the following:
  - A wireless (802.11 b/g) or Ethernet network
  - One or more computers running Windows 2000 or XP
  - Television set
  - Broadband Internet service (recommended)
2. Have your Network Name (SSID) and security settings handy.

#### **First, Install the Media Server Software**

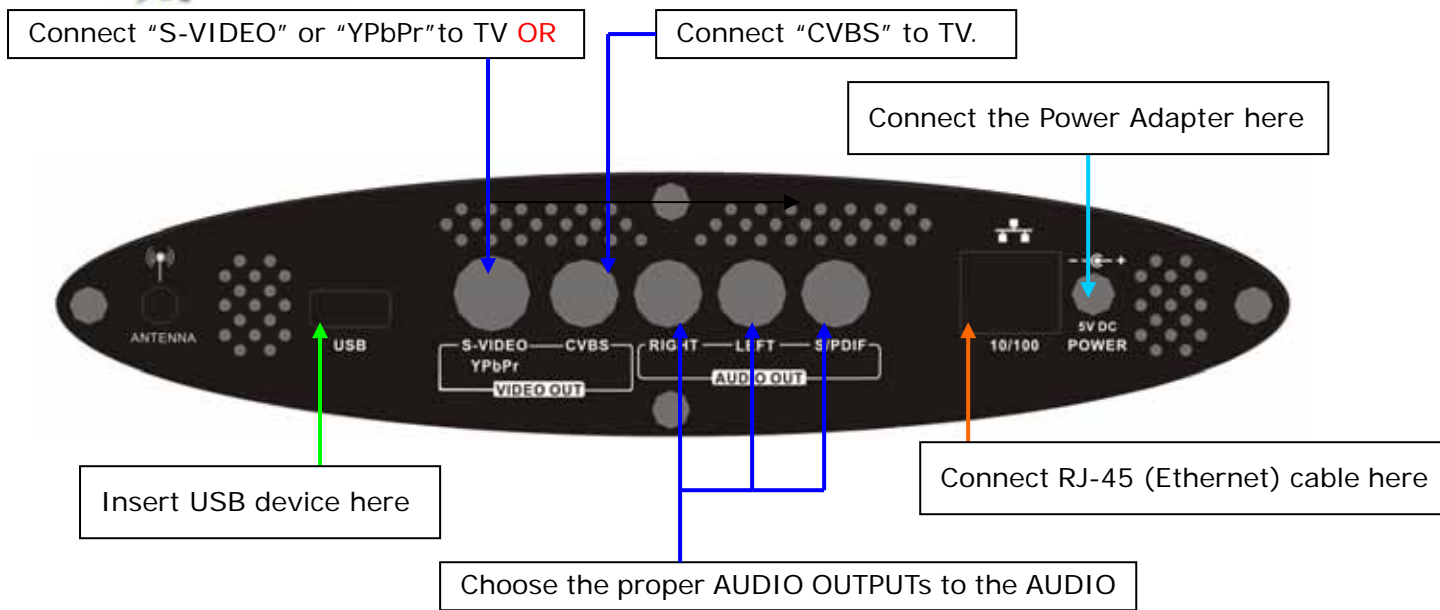
1. Power on your computer and log in as needed.
2. Insert the *Installer CD* into the CD drive on the computer. The CD main page loads.
3. Follow the InstallShield Wizard and click Finish when done.
4. Restart your computer and the Honeywld Media Server software automatically runs. The Media Server software icon appears on the Windows System Tray.
5. Use the Media Server software to scan your hard drive to locate your video, figure, and music files.

**Note:** You can use the Options tab on the Media Server to specify which types of files you want to include.

#### **Then, Install the DMA Player**

1. If you have a wired LAN network (not wireless), use an Ethernet cable such as the one provided in the package to connect the DMA to your Home Network.
2. Determine which type of cable your television uses:
  - **Video cable and Audio cable:** These two cables are included, and are compatible with most televisions in the U.S.
  - **S-Video or Component Video:** These cables are not included in the package. If you use this type of cabling you will be prompted to select video output settings when the DMA first starts up.
3. For composite video, connect the supplied video cable and audio cable to the Composite Video and Stereo Audio ports on the back of the DMA.

If you are supplying your own S-Video, or Component Video cable, connect it (and the audio cable if applicable) to the corresponding port on the back of the DMA.



**Fig. 2-1 DMA Rear View, Cable Connection**

4. Connect the other end of the cables to the corresponding ports on your television.
5. Install the two AA batteries into the remote controller that shipped with the product.
6. Turn on the television.
7. Connect the DMA power cord and plug it into an outlet.
8. Turn on the DMA Player

Next, configure the network settings by *wizard*

**1. Make sure that the Digital Media Server software is running.**

The DMA start-up screen appears on the television screen as shown below:



**Fig. 2-2 DMA Home**

2. Select the "Connection type" that you prefer to use.



3. Wireless connection:

--a.

4. Wired connection:

**SD101:**

- a. Go to the wireless setup by "Setup" -> "Network Setup" -> "Network Type"-> "Wireless Client", then save the change by pressing BACK, and selecting "SAVE Changes".
- b. Go to "Wireless Settings" to key-in the AP you want to uses by software keyboard.
- c. You can also scan an available AP manually by select "SCAN ESSID" in "Wireless Settings"
- d. Select the AP after the scan, then save the change by pressing BACK, and selecting "SAVE Changes" again.
- e. Set the DHCP Client to "Enable" to connect to AP automatically later.

**PC:**

- a. Follow the WLAN configuration step to enable the DHCP client
- b. Follow the WLAN configuration step to connect to the AP which is the same as DMA connect to.

**3. Ethernet Setup:**

- a. The Ethernet Setting shipped with default to enable DHCP to connect to your DHCP server automatically.
- b. You can check the DHCP and IP address by entering "Setup" -> "Network Setup" -> "Network Type"-> "Wired".
- c. You can set the IP address manually by entering "Setup" -> "Network Setup" -> "Network Type"-> "Wired", then set the "DHCP" to disable and enter the IP address by the number buttons on the remote controller.

**4. Start to enjoy the multimedia**

All the files that you scanned with the Media Server software are now available to play on DMA player. Use the remote controller to select the desired media.

P.S. For more details of network configurations, please refer to Chapter 4.



## Chapter 3 Digital Media Server

The Digital Media Adapter comes with Media Server software that runs in a computer on your home network. You can play the media files that in your PC on TV by the digital media server. The Media Server software is easily installed from the Installer CD. After installation, it can be configured to automatically start when Windows system is up. You may use the Media Server to scan for additional media at any time.

### Media Files Tab

All multimedia files that are shared from file system will list here. You can check the related information of the media files her.

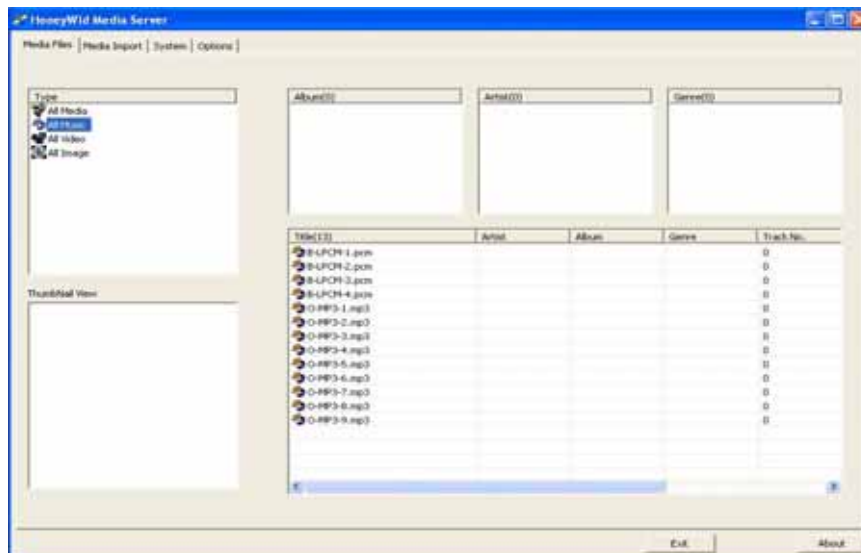
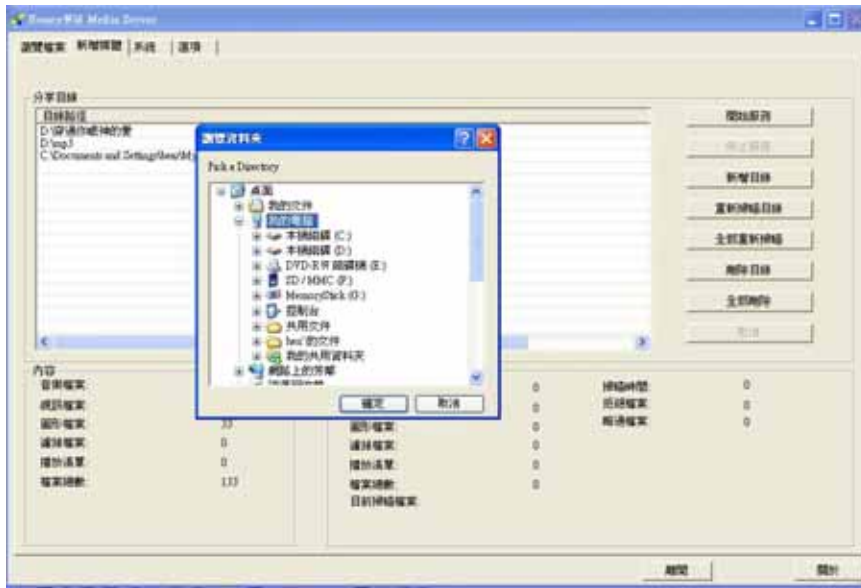


Fig. 3-1 Media Files Tabs

### Media Import Tab

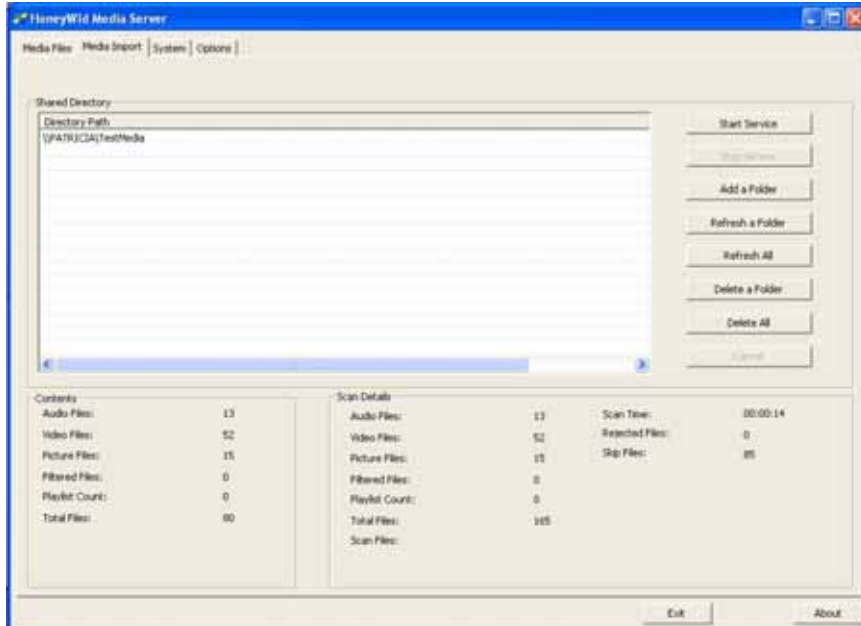
You can choose which folders that you want to share in this tab.

1. Press "Add a Folder" button to invoke the Explore to choose folder.



**Fig. 3-2 Media Import – 1**

2. Select the folder you want to share and press "OK" to start the files scanning.
3. The DMS will ignore those non support files automatically and you can see which folders had been shared from "Shared Directory" column.



**Fig. 3-3 Media Import – 2**

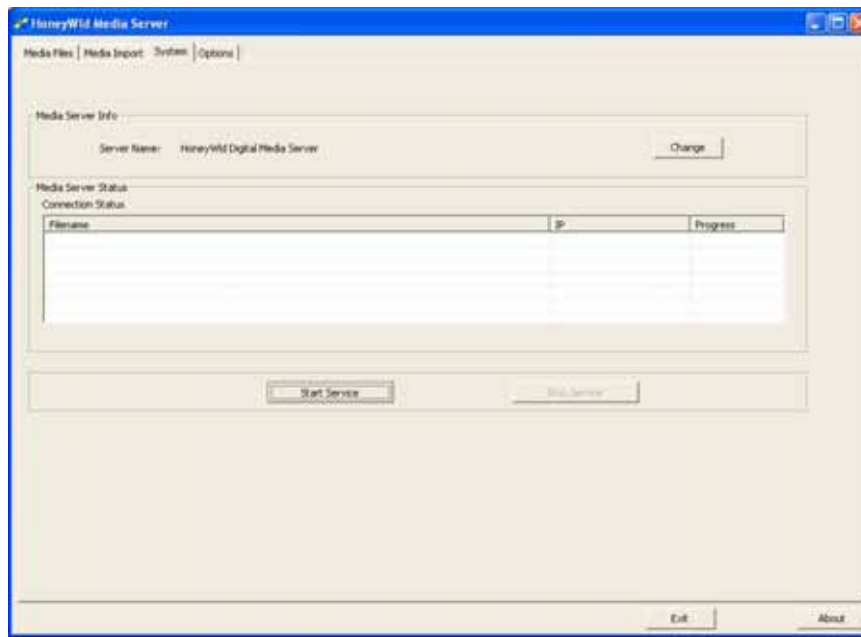
4. Press "Start Service" to start the file sharing service, then you can choose this server from Digital Media Player.
5. If you want add or remove any shared folder, press "Stop Service" first, then repeat step



- 1-4.
6. If there are any changes in the folders that you shared, please also press “Stop Service” button first, and then press “Refresh a Folder” button or “Refresh All” button to refresh the file list.

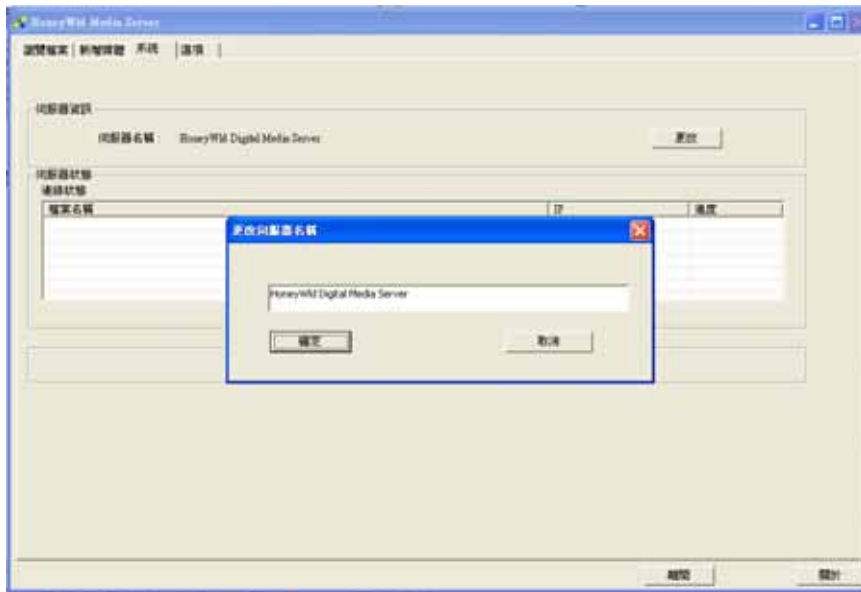
## System Tab

You can configure the display name of Digital Media Server here.



**Fig. 3-3 System Tab-1**

1. Press “Stop Service” first, and then press the “Change” button.
2. Enter the name you desired to use and press “OK”.

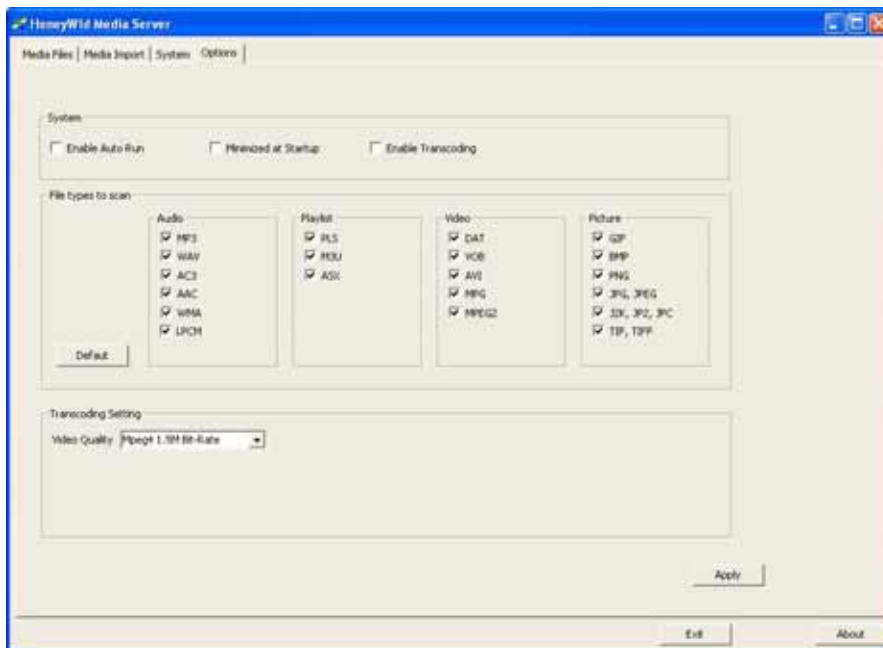


**Fig. 3-5 System Tab - 2**

3. Press "Start Service" to start the file sharing service, and you can find the server name has been changed from DMA player.

## Option Tab

In this tab you can check the supported file types of media files. Some service options are also configured here.



**Fig. 3-6 Option Tab**



1. Check the "Enable Auto Run" box and this Digital Media Server will auto run once the Window system is up.
2. Check the "Minimized at Startup" box and this Digital Media Server will minimize to system tray when the program is invoked.
3. Check the "Enable Transcoding" box to enable the Transcoding function. Note that all video files will be transferred to mpeg4 files to play, and you can watch some special file formats such as "\*.mp4", "\*.mov" only by doing this.
4. When the "Transcoding" function is enabled, please also select the "Transcoding Quality" at the bottom column.





## Chapter 4 DMA Player

### Media Format

To play media, the Digital Media Player must be connected to the network, and the Media Server software must be running. To scan for digital files, go to the computer running the Media Server software and use the Media tab and Media Import tab. The files may be stored on any computer on the network, or on a CD in the computer's CD drive.

The Digital Media Player is compatible with the following media file formats:

- MPEG 1, 2, 4 compressed audio and video files
- JPEG and GIF compressed image files
- BMP and TIFF image files
- MP3s up to 320 Kbps or variable bit rate (VBR)
- WMA file up to 192Kbps or variable bit rate (VBR)
- WAV audio files

### DMA Main Menu

The DMA Main Menu lets you go to browse Video, Music, Photo and Setup.

#### **To Browse Directory:**

1. Select the desired media type from Video, Music or Photo icons, or press the [Music], [Photo], or [Video] hotkeys on the remote control to switch.
2. Select one server from the Browse menu if there is any server on the network.
3. Select one file in the Browser and ready to play.



Fig. 4-1 DMA main page

#### **Key Usage:**

[RIGHT] [ENTER] - enter



[LEFT] - Back to previous menu.

[Music], [Photo], or [Video] hotkeys - Change the media types.

[Setup] – Go to “Setup” menu.

## Play Music

1. **SD101** supports MP3, WMA, WAV, AC3, AAC type music formats
2. Select the server you desire to use from server list (Fig. 4-2).
3. Select one file in the from file list (Fig. 4-3), then press “PLAY” button (button 4) to play the music file (Fig. 4-4)

While playing, you can press [UP] button to play the previous music (Fig. 4-5), [DOWN] button to play next (Fig. 4-6), or simply press [LEFT] button to return to file list and select the other music to play.



Fig. 4-2 Music Server List



Fig. 4-3 Music Files List



Fig. 4-4 Play Music



Fig. 4-5 Prev. Music File



Fig. 4-6 Next Music File



4. Other functions while playing music.

- Fast Forward: Press ">>" button (button 6) to fast forward the music file. (Fig. 4-7)
- Rewind: Press "<<" button (button 4) to fast backward the music file. (Fig. 4-8)
- Volume Control: Press "+" or "-" buttons (button 27) to control the volume (Fig.4-9)
- Mute: Press "Mute" button (button 3) to mute or un-mute the music. (Fig. 4-10)
- Repeat One: Press "Repeat" button (button 10) once to repeat playing current music file. (Fig. 4-11)
- Repeat All: Press "Repeat" button (button 10) twice to repeat all music files in current folder. (Fig. 4-12)
- Repeat Off: Press "Repeat" button (button 10) for three times to disable the repeat mode. (Fig. 4-13)
- Pause: Press "PLAY" button (button5) while music is playing you can pause the music by pressing "PLAY" button again can resume the music (Fig 4-14).
- A-B Mode: Press Number button AB (button 30) once to set the start of repeat section (Fig. 4-15), and then press these buttons again to set the end of repeat section (Fig. 4-16). To cancel the repeat A-B mode, just press button AB (button 30) for the third times.



Fig. 4-7 Music Fast Forward





Fig. 4-8 Music Fast Backward



Fig. 4-9 Music Volume Control



Fig. 4-10 Music Mute



Fig. 4-11 Music Repeat One



Fig. 4-12 Music Repeat All



Fig. 4-13 Music Repeat Off



Fig. 4-14 Music Pause



Fig. 4-15 Music AB mode "A"



Fig. 4-16 Music AB mode "A-B"

4. BGM Setting (My Favorite):

- a. You can press the "OK" button (button 23) to active a music file that you want to add to or remove from "My Favorite" from music file list. (Fig. 4-17, Fig. 4-18)
- b. You can check the BGM lists in "My Favorite" folder from server list page (Fig. 4-19).
- c. You can press the "OK" button (button 23) to play or stop the BGM (My Favorite) on browse page or PHOTO mode (Fig. 4-20).



Fig. 4-17 Music Add to BGM



Fig. 4-18 Music Remove from BGM



Fig. 4-19 Music -- My Favorite





Fig. 4-20 Music BGM + Slideshow

**Key Usage:**

[RIGHT] [ENTER] - play

[STOP] - stop playing and return to Browser.

[UP] - play previous.

[DOWN] - play next.

[LEFT] - Return to Browser.

[Play/Pause] - pause.

[Volume+/-] – control the volume

[BGM]([Enter] button) – add/remove BGM; play/stop BGM

**Play Video**

---

1. SD101 supports MPEG1, MPEG2, MPEG4 type video formats
2. Select the server you desire to use from server list (Fig. 4-21).
3. Select one file in the from file list (Fig. 4-22), then press "PLAY" button (button 4) to play the music file (Fig. 4-23), and press "PLAY" button again to pause the video playing.

While playing, you can press [UP] button to play the previous music (Fig. 4-24), [DOWN] button to play next (Fig. 4-25), or simply press [LEFT] button to return to file list and select the other music to play.



Fig. 4-21 Video Server List



Fig. 4-22 Video File List



Fig. 4-23 Play Video



**Fig. 4-24 Prev. Video File**



**Fig. 4-25 Next Video File**

**4. Other functions while playing music.**

- Fast Forward: Press ">>" button (button 6) to fast forward the video file. (Fig. 4-26)
- Rewind: Press "<<" button (button 4) to fast backward the video file. (Fig. 4-27)
- Volume Control: Press "+" or "-" buttons (button 27) to control the volume (Fig. 4-28)
- Mute: Press "Mute" button (button 3) to mute or un-mute the video. (Fig. 4-29)
- Repeat One: Press "Repeat" button (button 10) once to repeat playing current video file. (Fig. 4-30)
- Repeat All: Press "Repeat" button (button 10) twice to repeat all video files in current folder. (Fig. 4-31)
- Repeat Off: Press "Repeat" button (button 10) for three times to disable the repeat mode. (Fig. 4-32)
- Pause: Press "PLAY" button twice to pause the video playing, and press "PLAY" again to



resume the video file playing. (Fig. 4-33)

-- Zoom: Pres "Zoom" button (button 12) to enlarge or shrink screen (Fig. 4-34, 4-35).

-- Subtitle and Language: Press "CH+, CH-" buttons to switch the languages you desired in VOB files (Fig. 4-36) and to switch the subtitles in Mpeg4 files (Fig. 4-37)

-- A-B Mode: Press Number button AB (button 30) once to set the start of repeat section (Fig. 4-38), and then press it again to set the end of repeat section (Fig. 4-39). To cancel the repeat A-B mode, just press this button (button AB) for the third times.

5. You can get the playing information such as file name and the playing timer from Information Dialog. Just Press "DISPLAY" button (button 30) to enable the info dialog. (Fig.4-40, 4-41)
6. Press "UP" or "Down" buttons (button 20 or 24) will bring out the floating browser; you can use it as the normal file browser and choose another video file to play (Fig. 4-42).



**Fig. 4-26 Video Fast Forward**



**Fig. 4-27 Video Fast Backward**



Fig. 4-28 Video Volume Control



Fig. 4-29 Video Mute



Fig. 4-30 Video Repeat One



Fig.4-31 Video Repeat All



Fig. 4-32 Video Repeat Off



Fig. 4-33 Video Pause



Fig. 4-34 Video Zoom in

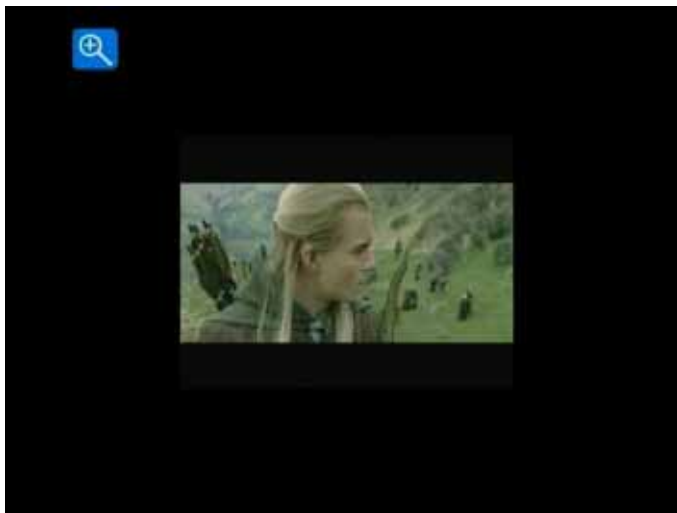


Fig. 4-35 Video Zoom out

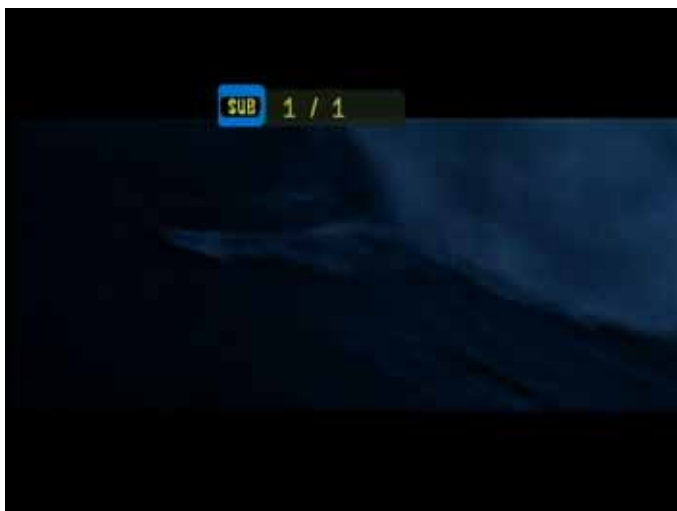


Fig. 4-36 Video Subtitle



Fig. 4-37 Video Language



Fig. 4-38 Video AB mode-A



Fig. 4-39 Video AB mode-B





Fig. 4-40 Video Info I



Fig. 4-41 Video Info II



Fig. 4-42 Video browser



### Key Usage:

[RIGHT] [ENTER] button to play

[STOP] button to stop playing and return to browser menu.

[>>] button to fast forward

[<<] button to back forward

[NEXT] button to skip to play next file

[PREV] button to skip to play previous file

[LEFT] button to return to Browser (files list)

[PLAY/PAUSE] button to pause

[CH-] button to show subtitle

[CH+] button to change audio language

[Volume+/-] – control the volume

### Play Photo

---

1. SD101 supports JPG, BMP, PNG, J2K, GIF, TIFF type image formats.
2. There are "List Mode" (Fig. 4-43) and "Thumbnail Mode" (Fig. 4-44) when you are browsing photo files.
3. Select the server you desire to use from server list (Fig. 4-45, 46, 47).



Fig. 4-43 Photo Server List Mode



Fig. 4-44 Photo Server Thumbnail Mode



Fig. 4-46 Photo List File List



Fig. 4-47 Photo Thumbnail Folder List



**Fig. 4-48 Photo Thumbnail File List**

4. Select one file from file list, then press "OK" to show the image file (Fig. 4-48). While playing, you can press [UP] button to play the previous image file, [DOWN] button to play next or simply press [LEFT] button to return to file list and select the other image file to show.
5. Press "PLAY" button (button 5) to show the image file with the "Slideshow" mode (Fig. 4-49), and press "PLAY" button again to cancel.
6. While playing image file, you can press "ZOOM" button to enlarge or shrink the photo (Fig. 4-50, 51); if the image is bigger than TV, just use direction buttons to move it (Fig. 4-52).
7. While playing image file, you can press "button12" to rotate the image (Fig. 4-53)
8. While playing slide show, you can press "Enter" button to invoke BGM at the same time (Fig. 4-54).
9. While playing slide show or single image file, you can press "DISPLAY" button to get the file name and resolution about this image file. (Fig. 4-55)



**Fig. 4-48 Photo Single Play**



Fig. 4-49 Photo Slide show



Fig. 4-50 Photo Zoom In



Fig. 4-51 Photo Zoom Out



Fig. 4-52 Photo Zoom In with move



Fig. 4-53 Photo Rotate



Fig. 4-54 Photo with BGM



**Fig. 4-55 Photo Info**



## Chapter 5 Settings

### DMA Settings

There are five setting items while selecting "Setup Main Menu" listed as follows :

- Network Setup
- Wireless Setup
- Network Wizard
- System Setting
- Version



**Fig. 5-1 Setup Main Menu**

#### ***Cable Network Setting***

The DMA is set by default to get its IP Address via DHCP. With this setting, the DHCP server on your network assigns the IP Address to the DMA, which is a client. If your network does not use DHCP, then you must set the IP Address for the DMA to be in the correct subnet range for your network.

The DMA ships default to use DHCP, and the IP address is default set to 192.168.2.200. The IP can be changed when IP address is required and DHCP is disabled.





**Fig. 5-2 Cable Network Setting**

Item Name	Value	Use	Description
DHCP Client	Enable / Disable	Choose	Enable or Disable the Cable DHCP Client
IP Address	Ex. 192.168.9.200	KeyIn / Auto	The Client IP
Netmask	Ex. 255.255.255.0	KeyIn / Auto	The Client Netmask
Gateway	Ex. 192.168.9.254	KeyIn / Auto	The Client Gateway
DNS	EX. 168.95.1.1	KeyIn / Auto	The Client DNS

### ***Wireless Network Setting***

#### **PC:**

1. Turn on DHCP Client to connect to AP in the network, which is DHCP server, and is the same DHCP server as DMA.

#### **SD101:**

1. *Network Type:* Wireless Client (Fig. 5-3)

2. *Wireless Setup* (Fig. 5-4, 5-5, 5-6)

--SCAN ESSID: Scan the AP ESSID, and then Select AP from scan list; or

Input the AP name by software keyboard.

3. *Security:* (Fig. 5-7)

--Disable: Default

--Enable: Have your security key handy and input the correct password type by software keyboard.



**Fig. 5-3 Setting about Client Mode**

Item Name	Value	Use	Description
DHCP Client	Enable / Disable	Choose	Enable or Disable the Cable DHCP Client
IP Address	Ex. 192.168.9.200	KeyIn / Auto	The Client IP
Netmask	Ex. 255.255.255.0	KeyIn / Auto	The Client Netmask
Gateway	Ex. 192.168.9.254	KeyIn / Auto	The Client Gateway
DNS	EX. 168.95.1.1	KeyIn / Auto	The Client DNS



**Fig. 5-4 Client Mode – Wireless Setup**

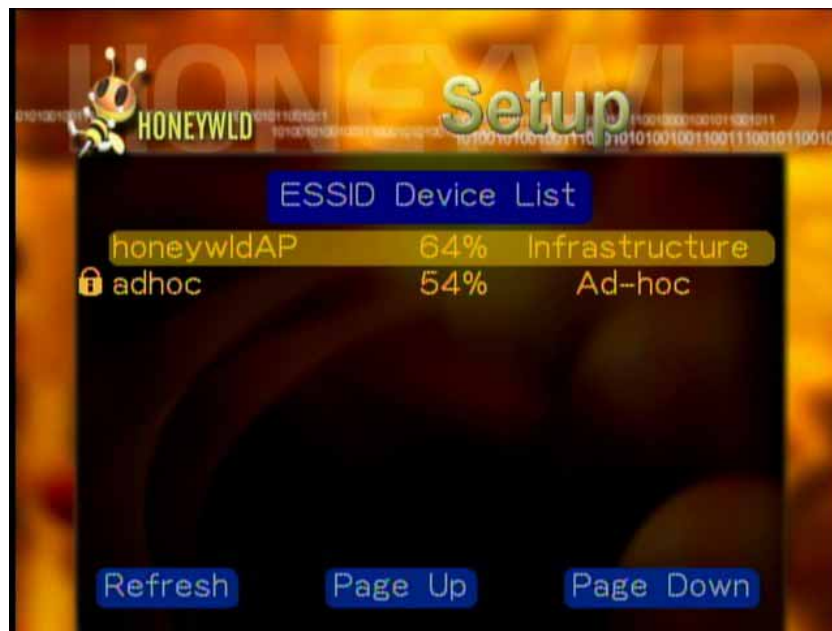


Fig. 5-5 Client Mode – ESSID Scan

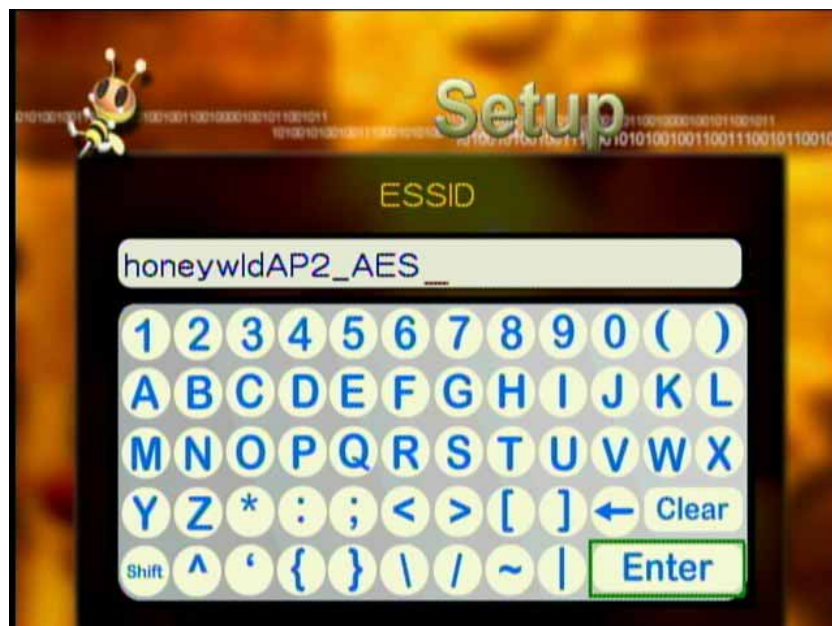


Fig. 5-6 Client Mode – Input ESSID manual

Item Name	Value	Use	Description
ESSID	Ex: HoneyWld AP	KeyIn	The Client-Mode ESSID
Scan ESSID	Show all wireless device after scanning	Enter and choose one device	Show all wireless devices after scanning. when you choose one device, the machine will get the data
Network Type	Infrastructure / Ad-Hoc	Choose	Choose one for your requirement
Authentication	Open System / Shared Key / Auto	Choose	Choose one for your requirement



Key Format	Disable / WEP / WPA-PSK	Choose	About wireless security, choose one kind of encryption or don't use encryption
Key Value	*****	KeyIn	KeyIn the secure key value for the AP by software keyboard.

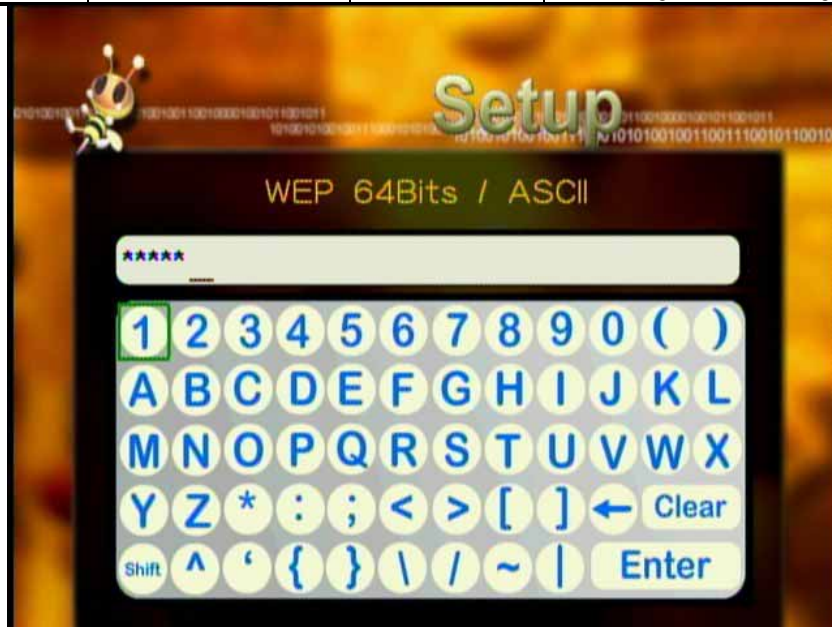


Fig.5-7 Security Setting

### Manually Setting Wireless Configuration for Hidden Network

In order to configure the DMA to work in a network where the SSID broadcast is disabled, you must manually configure the wireless settings. Also, it may be necessary to manually configure an Ad Hoc network.

#### **To configure wireless settings manually:**

1. Push the **Setting Menu** button on the remote.
2. Select **Wireless Network Setting, Mode to Client, and Enter General Setting, and Enter value ESSID.**

The current wireless settings, if any, are displayed in the second row for your reference.

4. Press **Back** to accept the setting or press to change the setting. Enter a value of up to 32 characters for the SSID. After entering the new SSID, press **Save** to save.

The Wireless Mode is displayed.

5. Press **Save** to accept the setting or press to change the setting. Options for wireless mode are Infrastructure and Ad/Hoc. If Ad/Hoc is chosen, you will also need to choose a location along with a wireless channel.

### System Settings

System Language and other settings apply on system are configured here.



**Fig. 5-8 System Setting**

Item Name	Value	Use
Language	English /Chinese /Simplified Chinese /France /German / Spanish/ Japanese	Choose
TV Mode Setup	NTSC/ PAL	Choose
Slide show time	4 ~ 10 sec	Choose
BG (Background) Music	OFF Repeat one Repeat all	Choose
Restore to Default	None	Choose

## Version

--Reset to Default: You can know the firmware version and update the latest system firmware here. Also you can restore all configurations to default settings by selecting "Reset to Default" (Fig. 5-8, 9).

-- Firmware Upgrade:

1. Put the latest firmware code to USB flash.
2. Insert the USB flash to the DMA system.
3. Select "Firmware Upgrade" item and the system will search the firmware code from USB flash automatically (Fig.5-10).
4. Select "YES" if you are willing to upgrade the system (Fig.5-11).
5. Do not power off the system or remove the USB flash while the upgrade process is running (Fig.5-12).
6. System will restart automatically after upgrading (Fig.5-13).



Fig. 5-9 Reset to Default -1



Fig. 5-10 Reset to Default -2



Fig. 5-11 Searching Firmware



Fig. 5-12 Confirm to upgrade



Fig. 5-13 Do not power off



Fig. 5-14 Upgrade Finished



## Chapter 6 Trouble Shutting

### **Problem: Can't find server**

Answer: Please make sure you have pressed the "Start Service" button on Media Server after importing media files.

### **Problem: The server can only be seen for a short time**

Answer: Some firewall or antivirus software may cause failures of the UPNP communications between SD101 and this Media Server. It is strongly recommend disabling the firewall or antivirus applications while using Media Server!

### **Problem: Can't find IP**

Answer: If you use wireless connection, make sure the security settings of the AP you connected to is correct; if you are using wired connection, check if the cable hooked correctly.

### **Problem: No Subtitle when playing "VOB" files**

Answer: Please make sure to enable the "subtitle" function by press "subtitle button" every time when you are watching "VOB" files; also please enable this function with each "VOB" file.



**FCC Caution:**

1. The device complies with Part 15 of the FCC rules. Operation is subject to the following two conditions:

- (1) This device may not cause harmful interference, and
- (2) this device must accept any interference received, including interference that may cause undesired operation.

2. FCC RF Radiation Exposure Statement: The equipment complies with FCC RF radiation exposure limits set forth for an uncontrolled environment. This equipment should be installed and operated with a minimum distance of 20 centimeters between the radiator and your body.

3. This device and its antenna(s) must not be co-located or operating in conjunction with any other antenna or transmitter.

4. Changes or modifications to this unit not expressly approved by the party responsible for compliance could void the user authority to operate the equipment.