



Label and Location

ifm RFID read/write heads HF

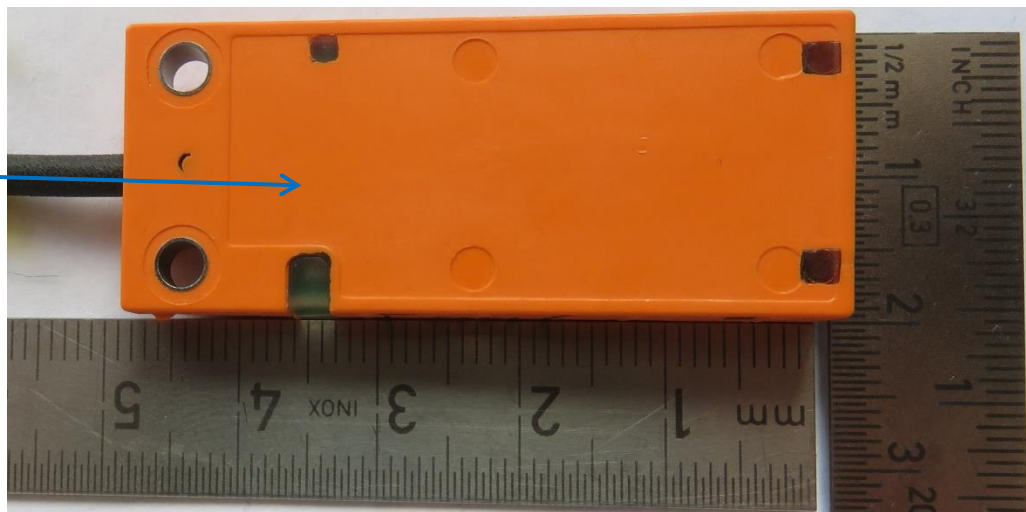
FCC ID: UN6-DTRHFKQ21

IC ID: 6799A-DTRHFKQ21

HVINs: ANT515TR21, ANT516TR21, DTI515TR21, DTI516TR21



label location





labels:

ANT515
ANT515TR21

$U_B: 19.2...28.8 V \text{==}$
 $I_e: \text{max. } 60 \text{ mA}$

ifm electronic
45128 Essen
www.ifm.com

MIC/KS

総務省指定
第XX-XXXXX号

IP 67 / IP 69K

IC: 6799A-DTRHFKQ21
FCC ID: UN6-DTRHFKQ21

CCXXXXXXXXXXXXX

XX 2204
X

ANT516
ANT516TR21

$U_B: 19.2...28.8 V \text{==}$
 $I_e: \text{max. } 60 \text{ mA}$

ifm electronic
45128 Essen
www.ifm.com

MIC/KS

総務省指定
第XX-XXXXX号

IP 67 / IP 69K

IC: 6799A-DTRHFKQ21
FCC ID: UN6-DTRHFKQ21

CCXXXXXXXXXXXXX

XX 2204
X

DTI515
DTI515TR21

$U_B: 18...30 V \text{==}$
 $I_e: \text{max. } 60 \text{ mA}$

ifm electronic
45128 Essen
www.ifm.com

MIC/KS

総務省指定
第XX-XXXXX号

IP 67 / IP 69K

IC: 6799A-DTRHFKQ21
FCC ID: UN6-DTRHFKQ21

CCXXXXXXXXXXXXX

XX 2204
X

DTI516
DTI516TR21

$U_B: 18...30 V \text{==}$
 $I_e: \text{max. } 60 \text{ mA}$

ifm electronic
45128 Essen
www.ifm.com

MIC/KS

総務省指定
第XX-XXXXX号

IP 67 / IP 69K

IC: 6799A-DTRHFKQ21
FCC ID: UN6-DTRHFKQ21

CCXXXXXXXXXXXXX

XX 2204
X