

**ELECTROMAGNETIC EMISSIONS COMPLIANCE REPORT
INTENTIONAL RADIATOR CERTIFICATION TO
FCC PART 15 SUBPART C and Canadian RSS-210 Issue 6 REQUIREMENT**

OF

Mobile FM Transmitter

MODEL No.: 1410221

BRAND NAME: CENTRiOS

FCC ID: UM7-MWFM03

IC ID: 7144B-MWFM03

REPORT NO: E0705070F

ISSUE DATE: May 28, 2007

Prepared for

Minwa(China) Electronics Co.,Ltd.

**Minwa(Shenzhen) Industrial Park, Fu Shing Au Village, Ping Hu Town, Long
Gang District, Shenzhen 518111, China**

Prepared by

SHENZHEN EMTEK CO., LTD

**Bldg 69, Majialong Industry Zone, Nanshan District,
Shenzhen, Guangdong, China**

TEL: 86-755-26954280

FAX: 86-755-26954282

VERIFICATION OF COMPLIANCE

Applicant:	Minwa(China) Electronics Co.,Ltd. Minwa(Shenzhen) Industrial Park, Fu Shing Au Village, Ping Hu Town, Long Gang District, Shenzhen 518111, China
Product Description:	Mobile FM Transmitter
Brand Name:	CENTRiOS
Model Number:	1410221
Serial Number:	N/A
File Number:	E0705070F
Date of Test:	May 15, 2007 to May 28, 2007

We hereby certify that:

The above equipment was tested by SHENZHEN EMTEK CO., LTD. The test data, data evaluation, test procedures, and equipment configurations shown in this report were made in accordance with the procedures given in ANSI C63.4 (2003) and the energy emitted by the sample EUT tested as described in this report is in compliance with conducted and radiated emission limits of FCC Rules Part 15.239, also, the model complies with Canadian RSS-210 Issue 6 standard.

The test results of this report relate only to the tested sample identified in this report.

Approved By



**David Lee / Q.A. Manager
SHENZHEN EMTEK CO., LTD.**

Table of Contents

- 1. GENERAL INFORMATION 4**
 - 1.1 PRODUCT DESCRIPTION..... 4
 - 1.2 RELATED SUBMITTAL(S) / GRANT (S) 4
 - 1.3 TEST METHODOLOGY 4
 - 1.4 SPECIAL ACCESSORIES 4
 - 1.5 EQUIPMENT MODIFICATIONS 4
 - 1.6 TEST FACILITY 5
- 2. SYSTEM TEST CONFIGURATION 6**
 - 2.1 EUT CONFIGURATION 6
 - 2.2 EUT EXERCISE 6
 - 2.3 TEST PROCEDURE 6
 - 2.4 LIMITATION 6
 - 2.5 CONFIGURATION OF TESTED SYSTEM 8
- 3. SUMMARY OF TEST RESULTS 9**
- 4. DESCRIPTION OF TEST MODES 9**
- 5. RADIATED EMISSION TEST 10**
 - 5.1 MEASUREMENT PROCEDURE..... 10
 - 5.2 TEST SET-UP (BLOCK DIAGRAM OF CONFIGURATION) 11
 - 5.3 MEASUREMENT EQUIPMENT USED: 12
 - 5.4 MEASUREMENT RESULT..... 12
 - 5.5 RADIATION MEASUREMENT PHOTOS 18
- 6. OCCUPIED BANDWIDTH..... 19**
 - 6.1 MEASUREMENT PROCEDURE..... 19
 - 6.2 TEST SET-UP (BLOCK DIAGRAM OF CONFIGURATION) 19
 - 6.3 MEASUREMENT EQUIPMENT USED: 19
 - 6.4 MEASUREMENT RESULTS:..... 19
 - 6.5 RADIATED EMISSION SETUP PHOTOS..... 20
- PHOTOGRAPHS OF EUT 23**

1. GENERAL INFORMATION

1.1 Product Description

The Minwa(China) Electronics Co.,Ltd. Model: 1410221 (referred to as the EUT in this report). The EUT is a car using stereo FM transmitter, with a high quality stereo FM transmitter IC inside, The actual tuning Controls can be manually adjusted to from 88.1 MHz to 107.9MHz with total channel spacing of 200KHz, All 15 channels: 88.1, 88.3, 88.5, 88.7, 88.9, 89.1, 89.3, 98.0, 106.7, 106.9, 107.1, 107.3, 107.5,107.7,107.9MHz examined.

A major technical descriptions of EUT is described as following:

- A). Operation Frequency: 88.1MHz~107.9MHz
- B). Antenna Designation: Internal
- C). Power Supply: By Car Charger or 12.0VDC
- D). Channel Spacing: 200KHz

1.2 Related Submittal(s) / Grant (s)

This submittal(s) (test report) is intended for FCC ID: UM7-MWFM03 and IC ID: 7144B-MWFM03 filing to comply with Section 15.239 of the FCC Part 15, Subpart C Rules.

1.3 Test Methodology

Both conducted and radiated testing was performed according to the procedures in ANSI C63.4 (2003). Radiated testing was performed at an antenna to EUT distance 3 meters.

1.4 Special Accessories

Not available for this EUT intended for grant.

1.5 Equipment Modifications

Not available for this EUT intended for grant.

1.6 Test Facility

Site Description

EMC Lab.

: Accredited by CNAL, 2005.11.02
The certificate is valid until 2010.11
The Laboratory has been assessed and proved to be in compliance with CNAL/AC01:2003(identical to ISO/IEC17025:1999)
The Certificate Registration Number is L2291

Accredited by TUV Rheinland Guangzhou, 2005.1

The certificate is valid until 2008.2

The Laboratory has been assessed according to the requirements ISO/IEC 17025:1999

Accredited by FCC, July 07, 2005

The Certificate Registration Number is 709623.

Accredited by Industry Canada, August 30, 2005

The Certificate Registration Number is 46405-4480

Name of Firm

: SHENZHEN EMTEK CO., LTD

Site Location

: Bldg 69, Majialong Industry Zone,
Nanshan District, Shenzhen, Guangdong, China

2. System Test Configuration

2.1 EUT Configuration

The EUT configuration for testing is installed on RF field strength measurement to meet the Commissions requirement and operating in a manner which intends to maximize its emission characteristics in a continuous normal application.

2.2 EUT Exercise

The Transmitter was operated in the normal operating mode. The Tx frequency was 88.1MHz~107.9MHz.

2.3 Test Procedure

2.3.1 Conducted Emissions (Not apply in the report)

The EUT is a placed on as turn table which is 0.8 m above ground plane. According to the requirements in Section 13.1.4.1 of ANSI C63.4-2003. Conducted emissions from the EUT measured in the **frequency range between 0.15 MHz and 30MHz** using **CISPR Quasi-Peak and average detector mode**.

2.3.2 Radiated Emissions

The EUT is a placed on as turn table which is 0.8 m above ground plane. The turn table shall rotate 360 degrees to determine the position of maximum emission level. EUT is set 3m away from the receiving antenna which varied from 1m to 4m to find out the highest emission. And also, each emission was to be maximized by changing the polarization of receiving antenna both horizontal and vertical. In order to find out the max. emission, the relative positions of this hand-held transmitter(EUT) was rotated through three orthogonal axes according to the requirements in Section 13.1.4.1 of ANSI C63.4-2003.

2.4 Limitation

(1) Radiated Emission

- (b) The field strength of any emissions within the permitted 200kHz band shall not exceed 250 microvolts/meter at 3 meters, The emission limit in this paragraph is based on measurement instrumentation employing an average detector. The provisions in section 15.35 for limiting peak emissions apply.
- (c) The field strength of any emissions radiated on any frequency outside of the specified 200Khz band shall not exceed the general radiated emission limits in Section 15.209.

Remark: The limit for average field strength dBuv/m for the fundamental frequency=48.0 dBuv/m.
And the limit for peak field strength dBuv/m for the fundamental frequency=68.0 dBuv/m.

Intentional Radiators general limit).as below.

Frequency (MHz)	Field strength $\mu\text{V/m}$	Distance(m)	Field strength at 3m $\text{dB}\mu\text{V/m}$
1.705-30	30	30	69.54
30-88	100	3	40
88-216	150	3	43.5
216-960	200	3	46
Above 960	500	3	54

(2) Occupied Bandwidth

- (a) Emissions from the intentional radiator shall be confined within a band 200kHz wide centered on the operation frequency, The 200kHz band shall lie wholly within the frequency range of 88.1-107.9MHz.

2.5 Configuration of Tested System

Fig. 2-1 Configuration of Tested System

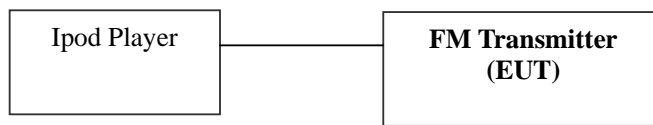


Table 2-1 Equipment Used in Tested System

Item	Equipment	Mfr/Brand	Model/Type No.	FCC ID	Series No.	Note
1.	Mobile FM Transmitter	CENTRiOS	1410221	UM7-MWFM03	N/A	<i>EUT</i>
2.	Ipod player	Ipod	A1136	N/A	N/A	
3.	Radio	sayin	FM21	N/A	N/A	

Note:

- (1) Unless otherwise denoted as EUT in 『Remark』 column , device(s) used in tested system is a support equipment.

3. Summary Of Test Results

FCC Rules	Description Of Test	Result
§ 15.239	Radiated Emission	Compliant
§ 15.239	Bandwidth Test	Compliant

4. Description of test modes

The EUT (Mobile FM Transmitter) has been tested under normal operating condition.

Three channels of EUT (the lowest channel, the middle channel and the highest channel) have been chosen for testing under Normal Operating condition. In this report, all the measured datum of the three channels have been reported. No software used to control the EUT for staying in continuous transmitting mode for testing.

1. For lowest channel : 88.1MHz
2. For middle channel : 98.0MHz
3. For highest channel: 107.9MHz

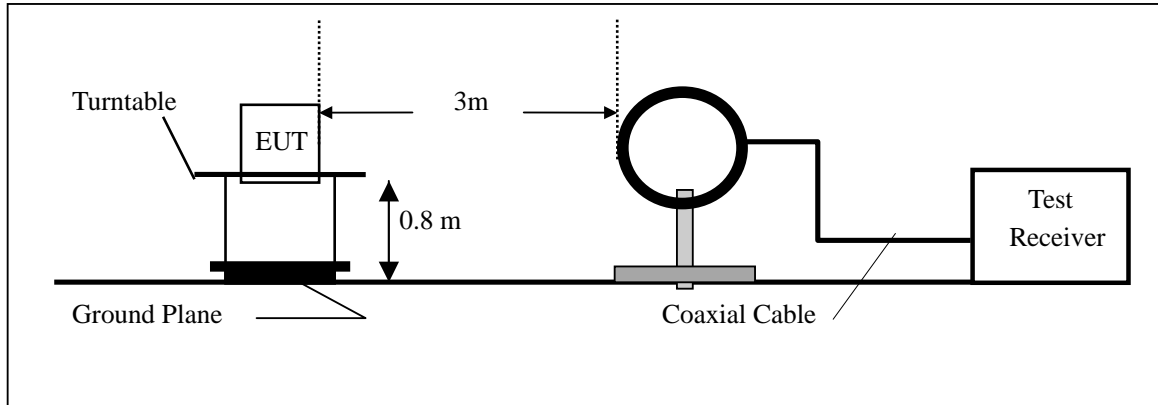
5. Radiated Emission Test

5.1 Measurement Procedure

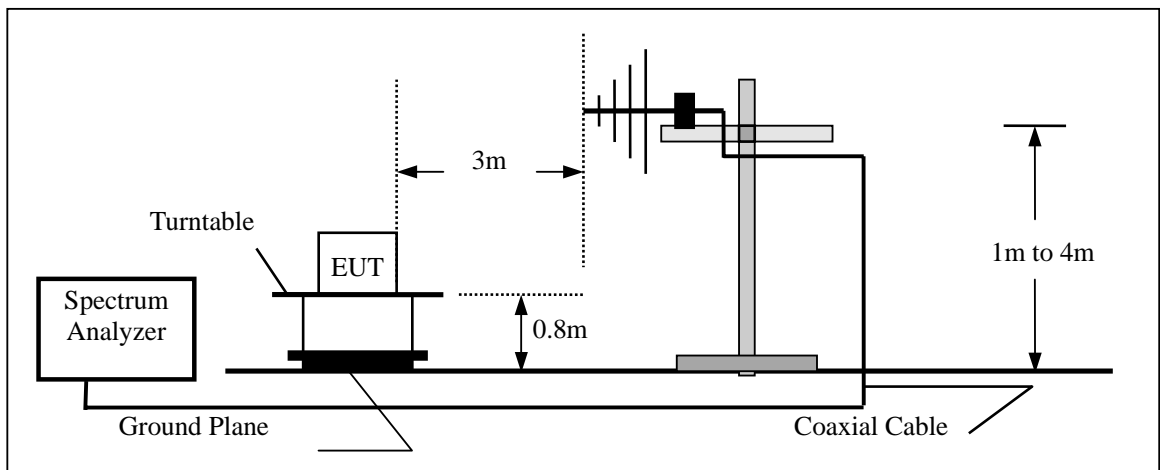
- 1 The EUT was placed on a turn table which is 0.8m above ground plane.
2. Maximum procedure was performed on the six highest emissions to ensure EUT compliance.
3. And also, each emission was to be maximized by changing the polarization of receiving antenna both horizontal and vertical.
4. Repeat above procedures until all frequency measured were complete.

5.2 Test SET-UP (Block Diagram of Configuration)

(A) Radiated Emission Test Set-Up, Frequency Below 30MHz



(B) Radiated Emission Test Set-Up, Frequency Below 1000MHz



Operation Mode: Transmitting Mode Test Date : May 23, 2007
 Test Item: General Radiated Emission Data Temperature : 28 °C
 Fundamental Frequency: Middle channel Humidity : 65 %
 Test Result: PASS Test By: Andy

Freq. (MHz)	Ant.Pol. H/V	Emission Level (dBuV)	Limit 3m (dBuV/m)	Margin (dB)	Note
196.20	V	25.14	43.50	-18.36	Peak
294.30	V	33.72	46.00	-12.28	Peak
392.40	V	35.35	46.00	-10.65	Peak
490.50	V	36.95	46.00	-9.05	Peak
588.60	V	29.92	46.00	-16.08	Peak
686.70	V	33.92	46.00	-12.08	Peak
196.20	H	24.36	43.60	-19.24	Peak
294.30	H	31.40	46.00	-14.60	Peak
392.40	H	42.77	46.00	-3.23	Peak
490.50	H	39.72	46.00	-6.28	Peak
588.60	H	35.80	46.00	-10.20	Peak
686.70	H	33.14	46.00	-12.86	Peak

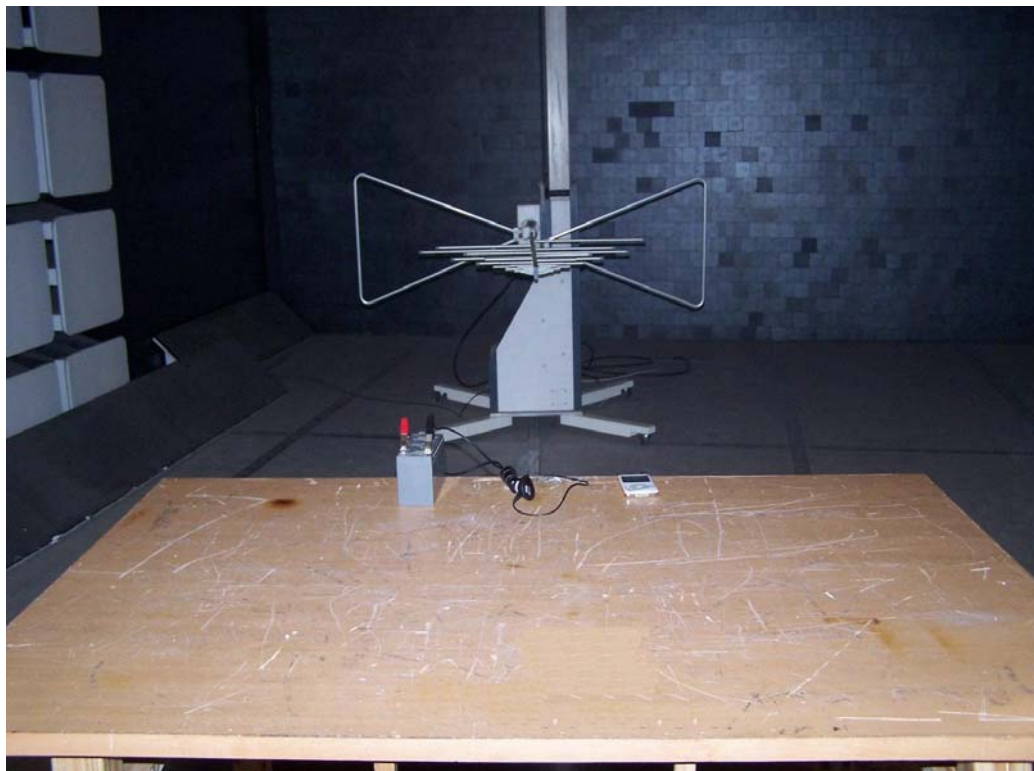
Note: Emission Level= Reading Level+ Probe Factor +Cable Loss

Operation Mode: Transmitting Mode Test Date : May 23, 2007
 Test Item: General Radiated Emission Data Temperature : 28 °C
 Fundamental Frequency: Highest channel Humidity : 65 %
 Test Result: PASS Test By: Andy

Freq. (MHz)	Ant.Pol. H/V	Emission Level (dBuV)	Limit 3m (dBuV/m)	Margin (dB)	Note
215.80	V	30.70	43.50	-12.80	Peak
323.70	V	38.63	46.00	-7.37	Peak
431.60	V	32.63	46.00	-13.37	Peak
539.50	V	30.48	46.00	-15.52	Peak
647.40	V	34.99	46.00	-11.01	Peak
755.30	V	32.14	46.00	-13.86	Peak
215.80	H	23.45	43.60	-20.15	Peak
323.70	H	37.51	46.00	-8.49	Peak
431.60	H	42.70	46.00	-3.30	Peak
539.50	H	35.28	46.00	-10.72	Peak
647.40	H	34.10	46.00	-11.90	Peak
755.30	H	32.81	46.00	-13.19	Peak

Note: Emission Level= Reading Level+ Probe Factor +Cable Loss

5.5 Radiation Measurement Photos



6. Occupied Bandwidth

6.1 Measurement Procedure

1. The EUT was placed on a turn table which is 0.8m above ground plane.
2. Set EUT as normal operation
3. Set SPA Center Frequency = fundamental frequency , RBW = 10KHz, ,VBW= 30KHz
4. Set SPA Max hold. Mark peak.

Note: The EUT can be connected to Ipod Player. The input signal of EUT is controlled by Ipod Player. So the volume control of Ipod Player was set to maximum during the test. It means that the test was performed with the maximum audio input.

6.2 Test SET-UP (Block Diagram of Configuration)

Same as 4.2 Radiated Emission Measurement.

6.3 Measurement Equipment Used:

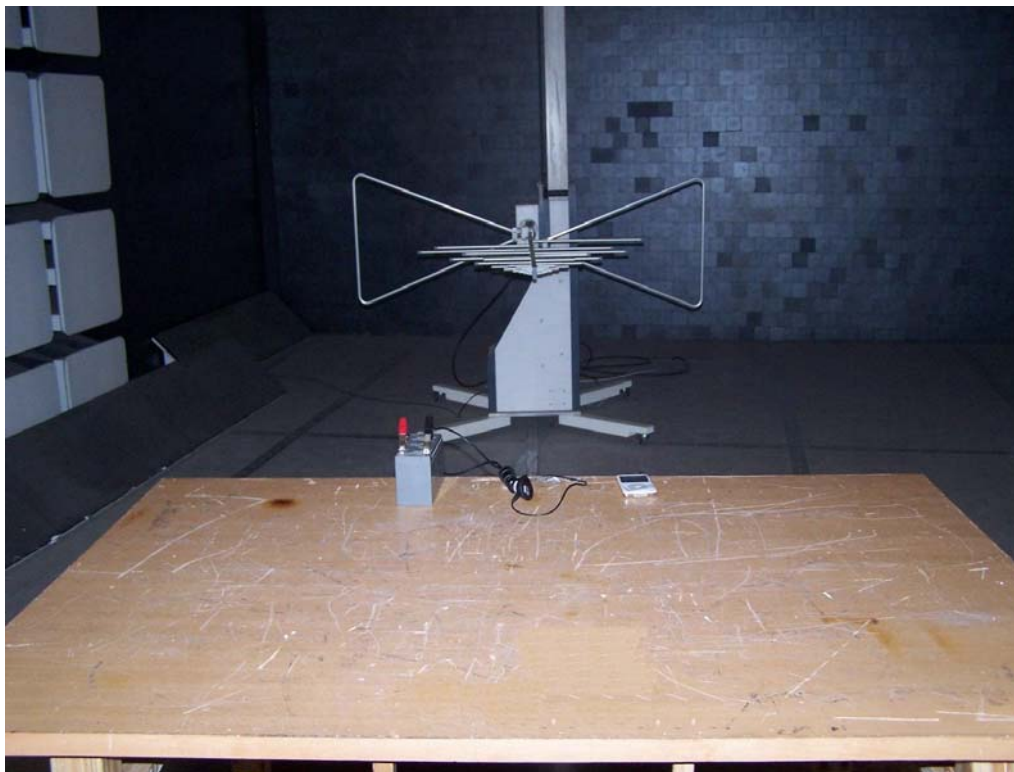
Same as 4.2 Radiated Emission Measurement.

6.4 Measurement Results:

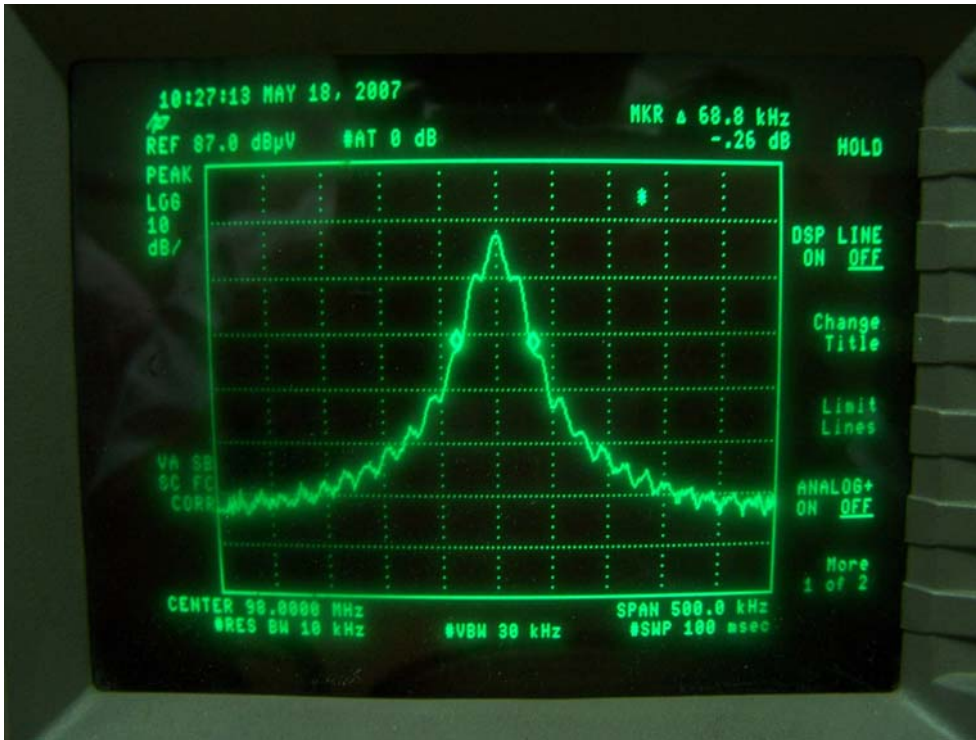
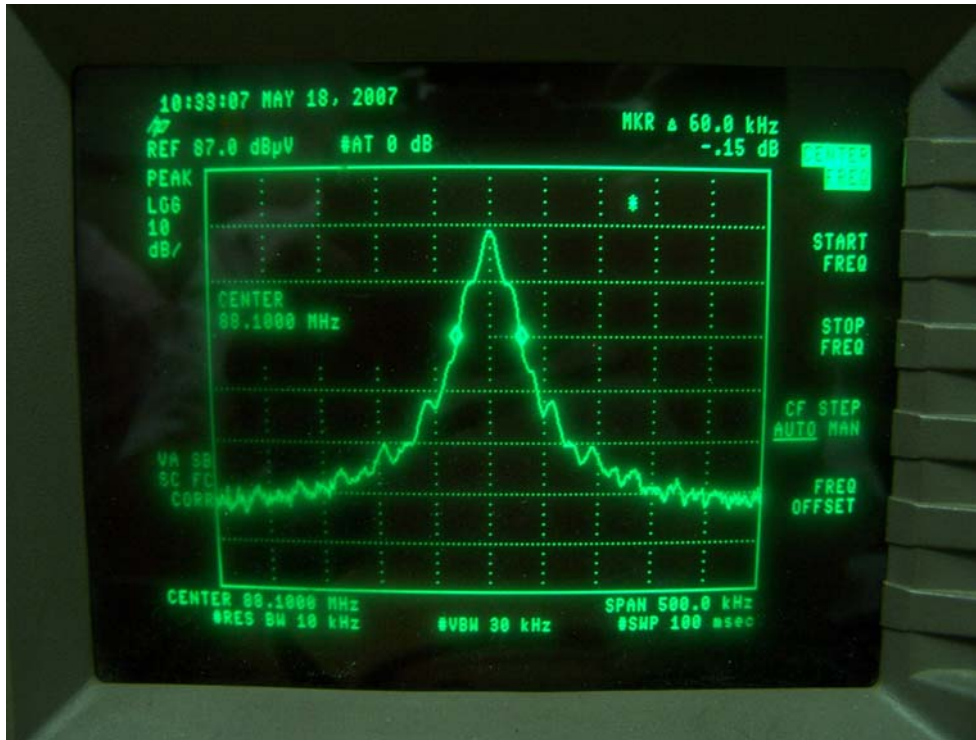
The field strength of any emissions which appear outside of this band shall not exceed the general radiated emission limits in section 15.209.

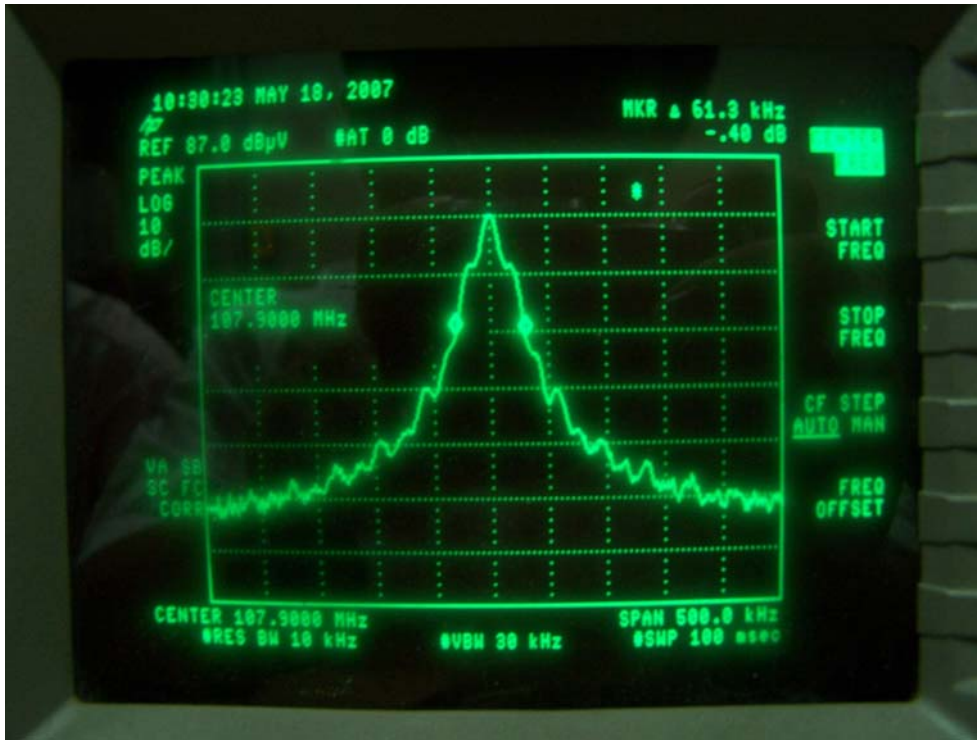
Refer to attached data chart.

6.5 Radiated Emission Setup Photos



Band Width Test Data





APPENDIX 1

PHOTOGRAPHS OF EUT

UP View of EUT



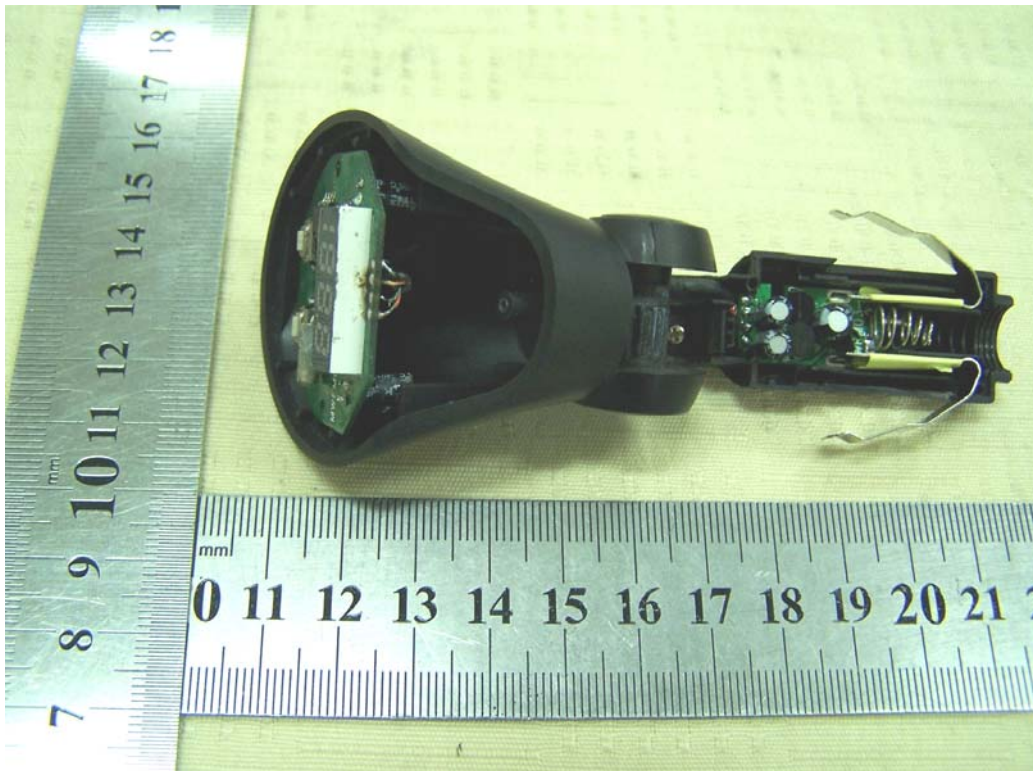
Bottom View of EUT



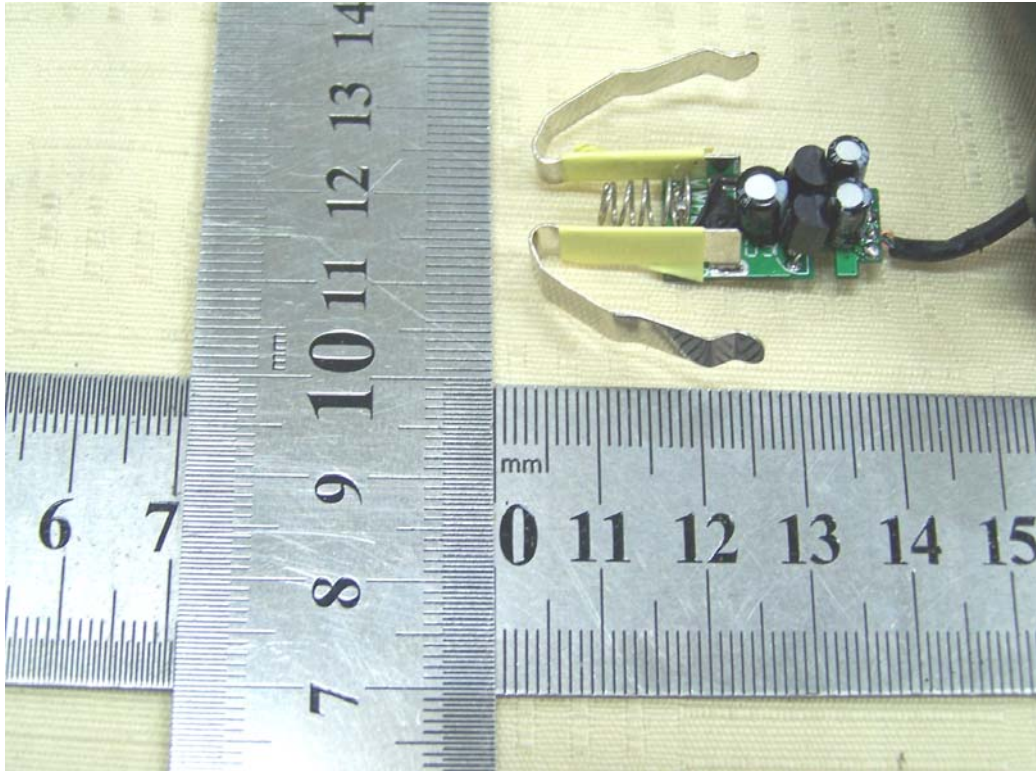
Side of EUT



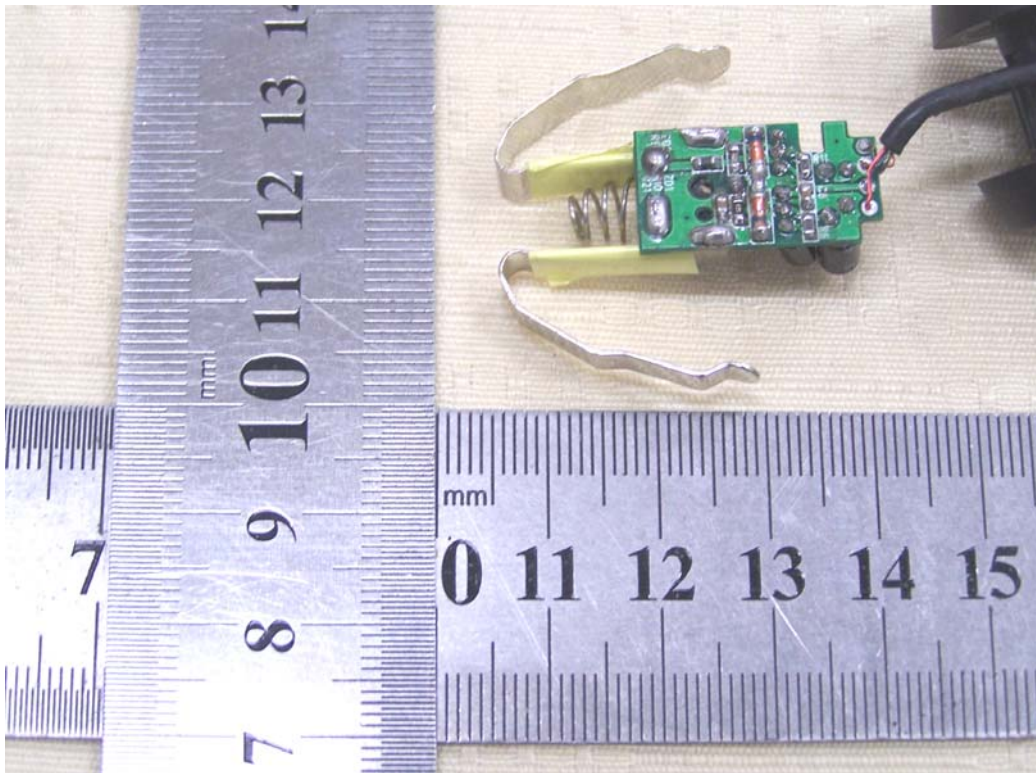
Internal of EUT



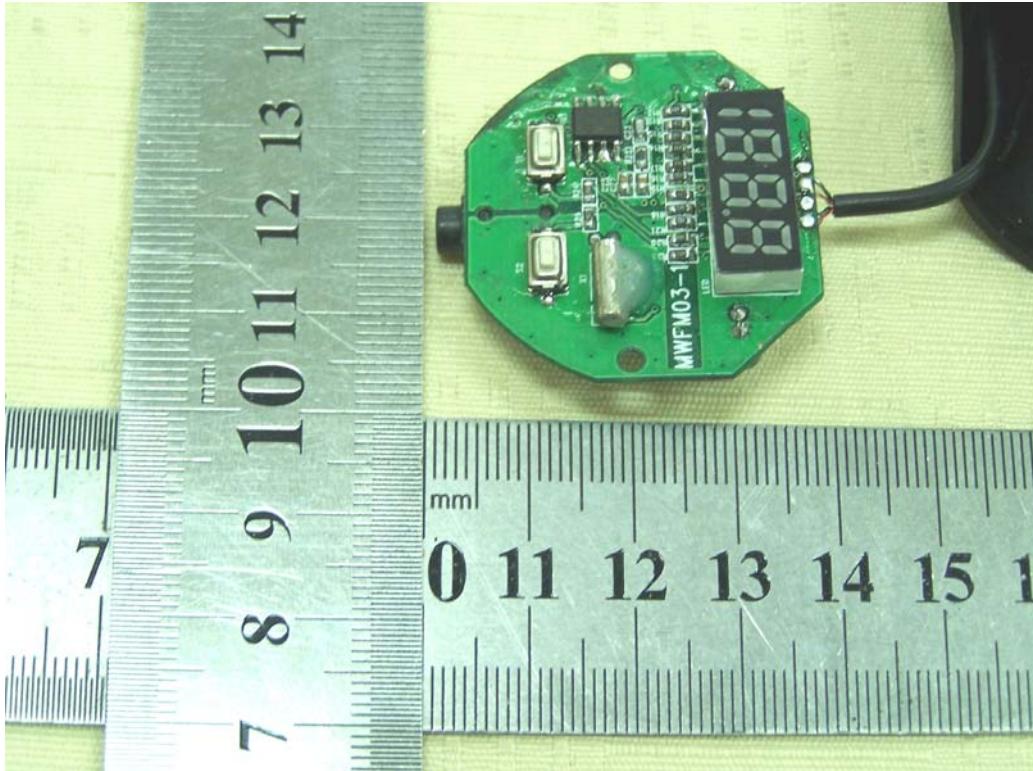
Internal of EUT



Internal of EUT



Internal of EUT



Internal of EUT

